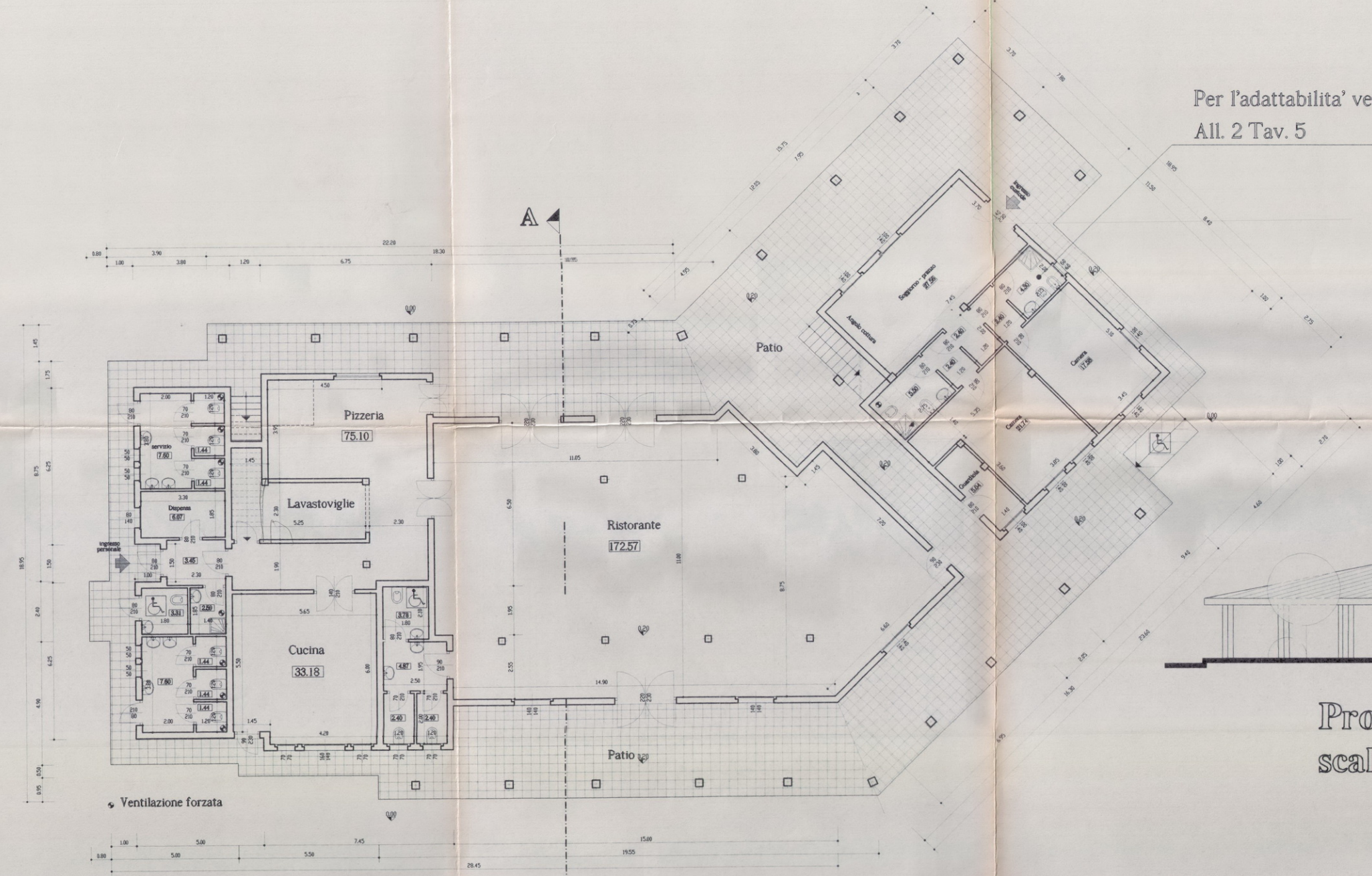
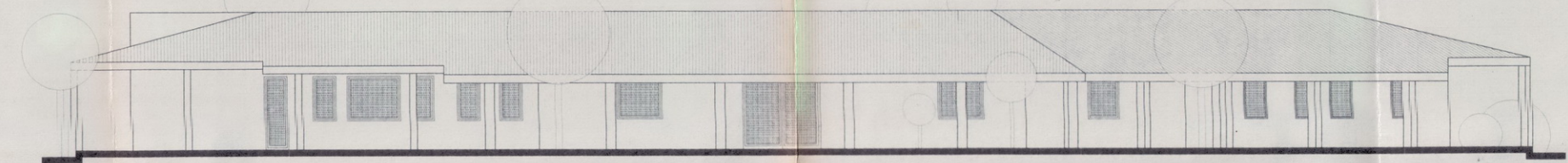


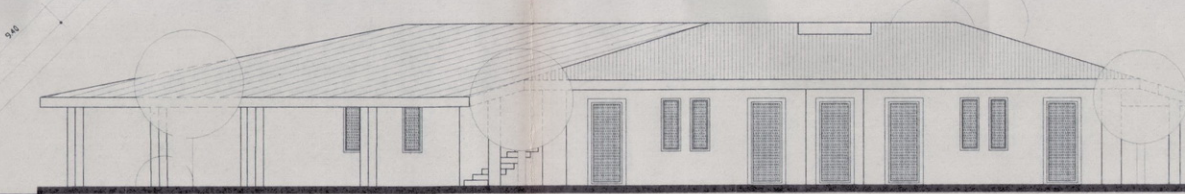
CORRISPONDENZA VERIFICATA IN SEDE DI SOPRALLUOGO



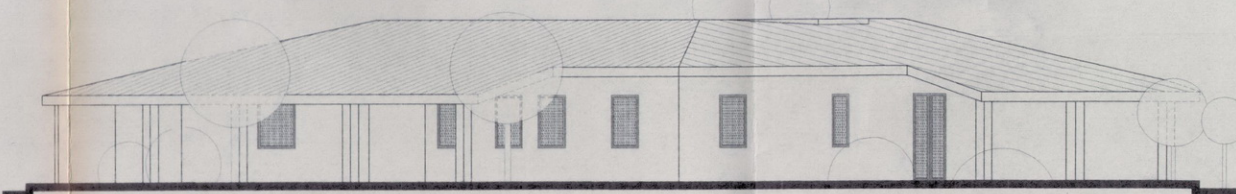
Pianta Piano Terra
scala 1:100



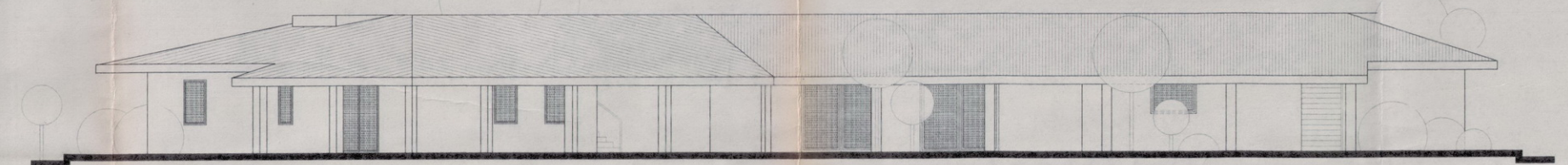
Prospetto Anteriore
scala 1:100



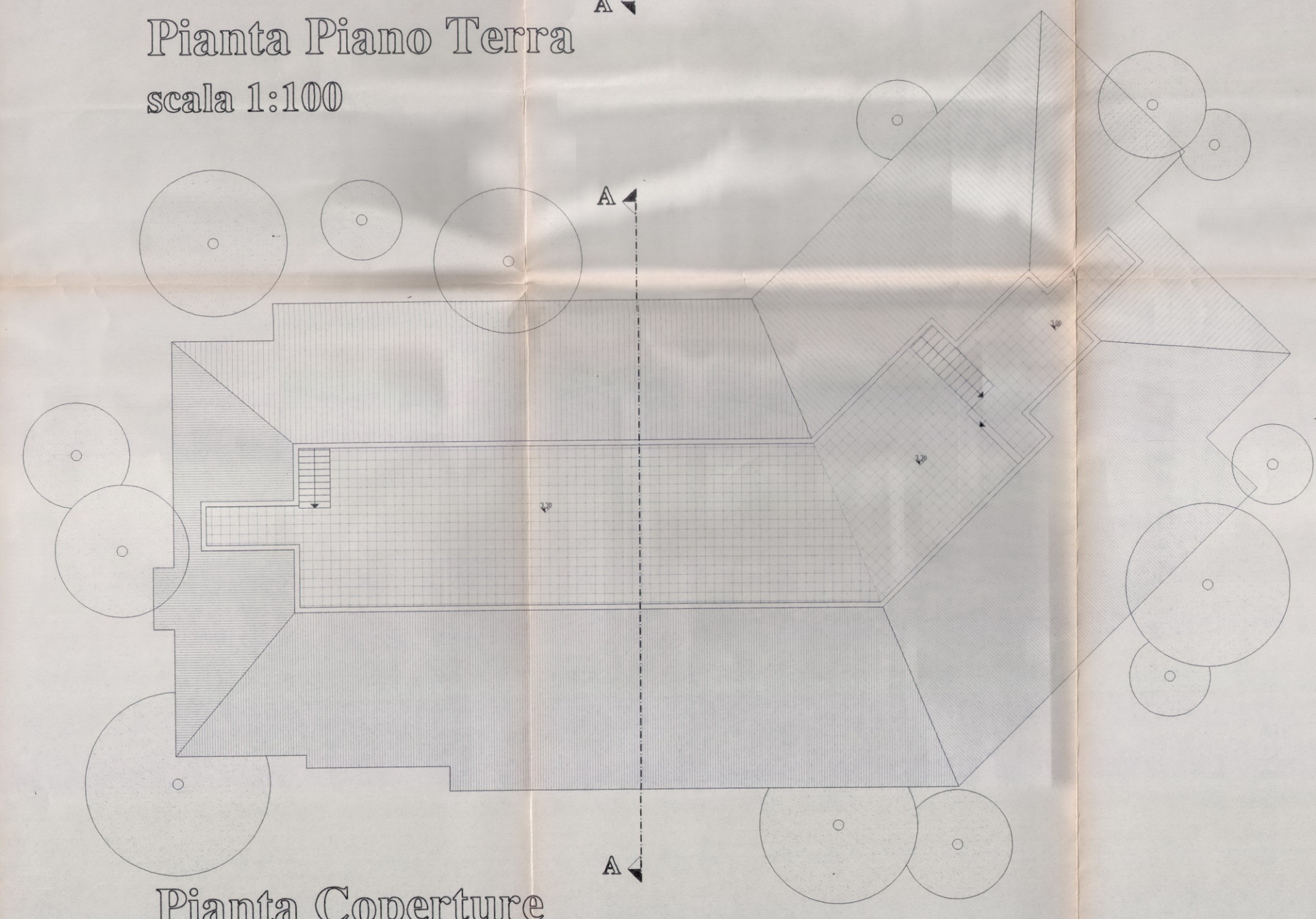
Prospetto Laterale Sinistro
scala 1:100



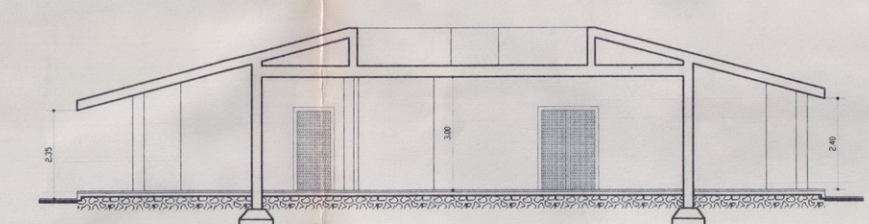
Prospetto Laterale Destro
scala 1:100



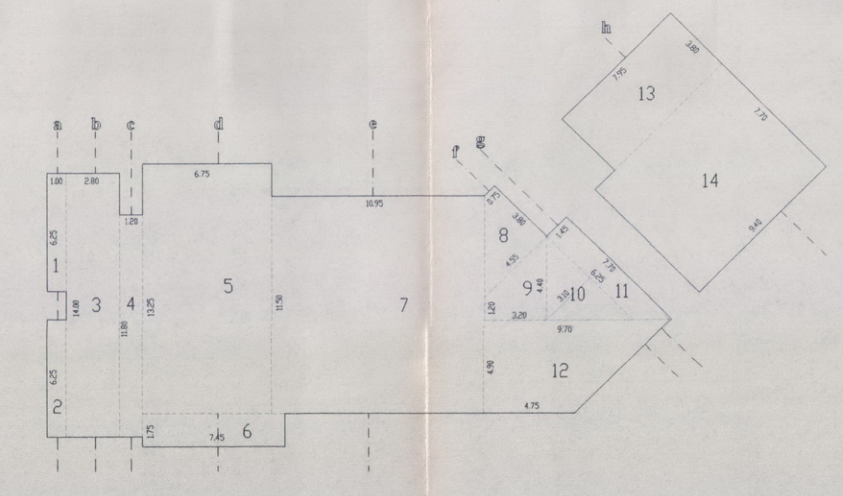
Prospetto Posteriore
scala 1:100



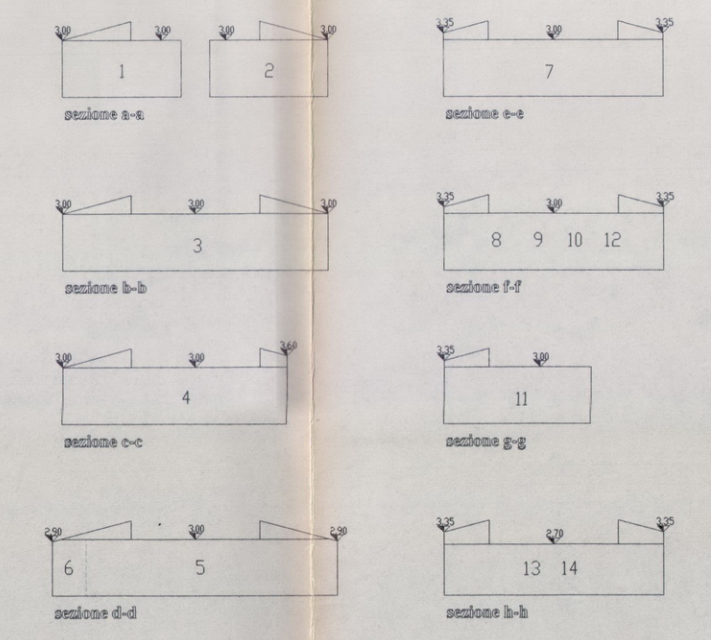
Pianta Coperture
scala 1:100



Sezione A-A
scala 1:100



Schema grafico superfici e volumi
scala 1:200



Calcolo analitico
Superfici e Volumi

N.	Superficie mq.	H.	Volume mc.
1	$1.00 \times 6.25 = 6.25$	3.00	18.75
2	$1.00 \times 6.25 = 6.25$	3.00	18.75
3	$2.80 \times 14.00 = 39.20$	3.00	117.60
4	$1.20 \times 11.80 = 14.16$	3.00	42.48
5	$6.75 \times 13.25 = 89.44$	3.00	268.32
6	$7.45 \times 1.75 = 13.04$	3.00	39.12
7	$10.95 \times 11.50 = 125.92$	3.00	377.76
8	$\frac{9.75+11.55}{2} \times 3.80 = 10.07$	3.00	30.21
9	$\frac{1.20+1.40}{2} \times 3.20 = 8.96$	3.00	26.88
10	$\frac{6.25 \times 3.10}{2} = 9.69$	3.00	29.07
11	$\frac{7.70+6.25}{2} \times 1.45 = 10.11$	3.00	30.33
12	$\frac{9.70+11.25}{2} \times 4.90 = 35.40$	3.00	106.20
13	$3.80 \times 7.95 = 30.21$	2.70	81.57
14	$7.70 \times 9.40 = 72.38$	2.70	195.43
Totale	471.08		1382.47

COMUNE DI PULA
PROVINCIA DI CAGLIARI

Progetto per la realizzazione di un insediamento a carattere turistico - alberghiero e servizi

Studio Lobina
Architettura
Urbanistica
Ingegneria
Rettoria

Arch. Luigi Lobina
Ing. Sandro Lobina

PROGETTO IN VARIANTE: Tipologia S-C

Piante - Prospetti - Sezione

Data: Ottobre 1999
Allegato: 2
Tavola: 3
Scala: 1:100, 1:200
Archivio: Nome file