



Ortofoto dei luoghi sovrapposta alla mappa catastale (in evidenza il compendio immobiliare pignorato)

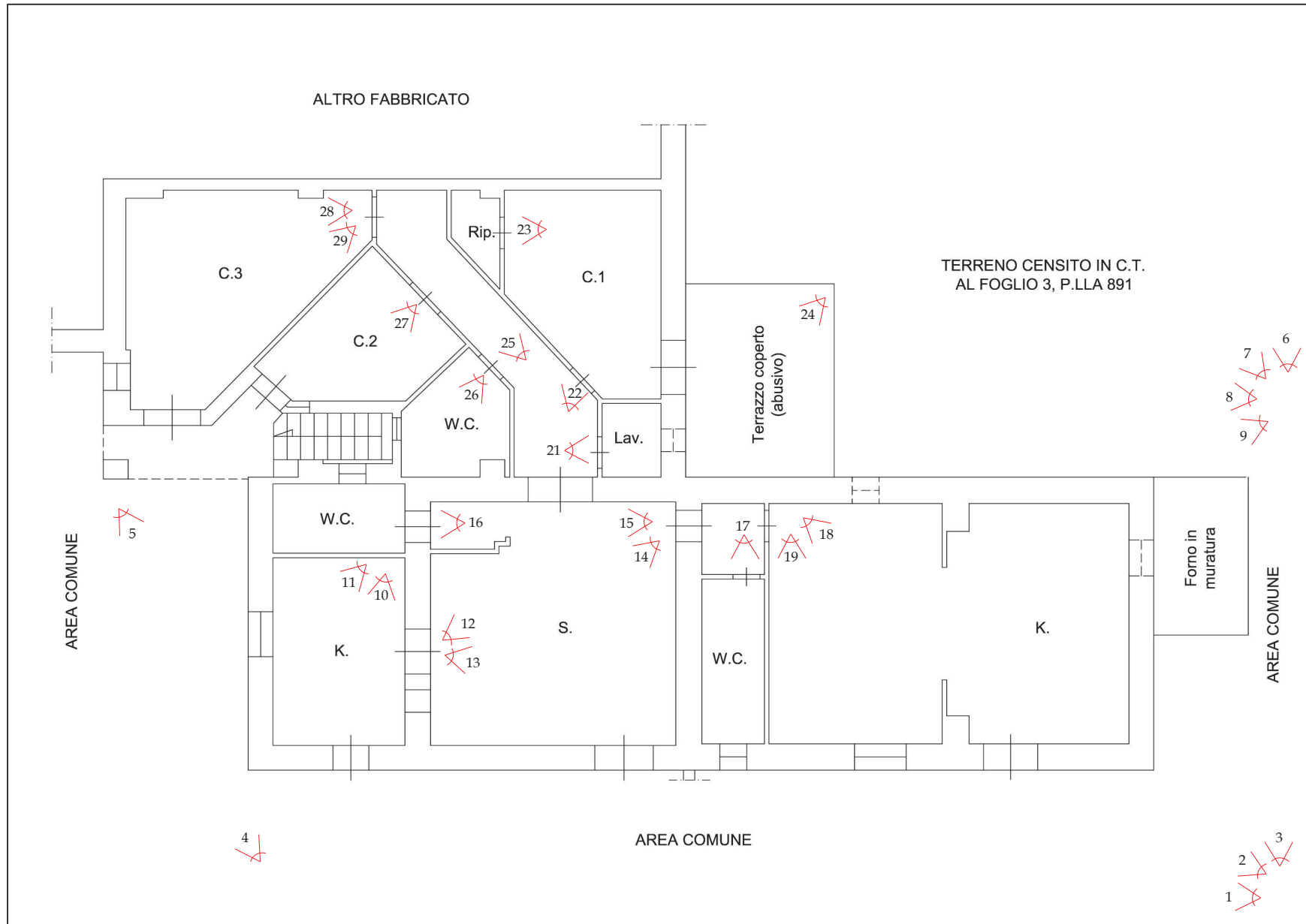


Figura 1: Coni ottici delle foto che seguono (Piano terra – U.I. censite ai subalterni 2, 3 e retrostante terreno censito alla particella 891)



Foto 1



Foto 2



Foto 3



Foto 4



Foto 5



Foto 6



Foto 7



Foto 8



Foto 9

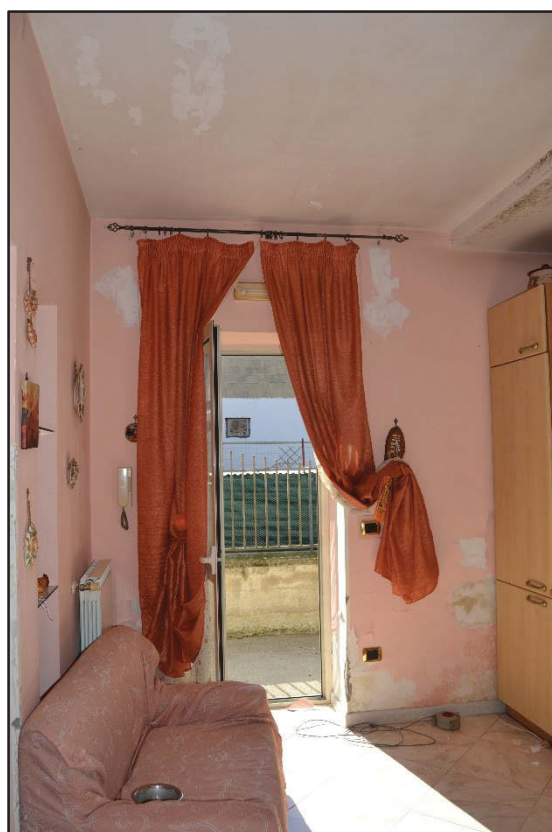


Foto 10

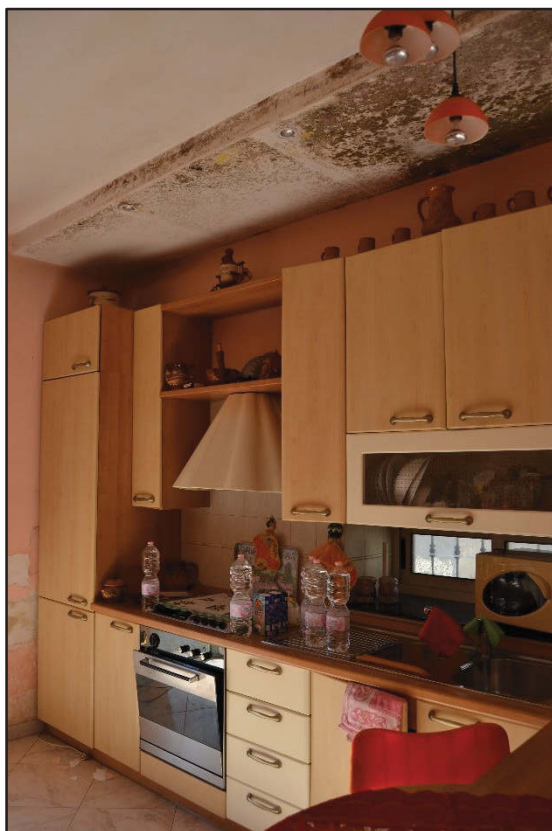


Foto 11



Foto 12



Foto 13



Foto 14



Foto 15



Foto 16

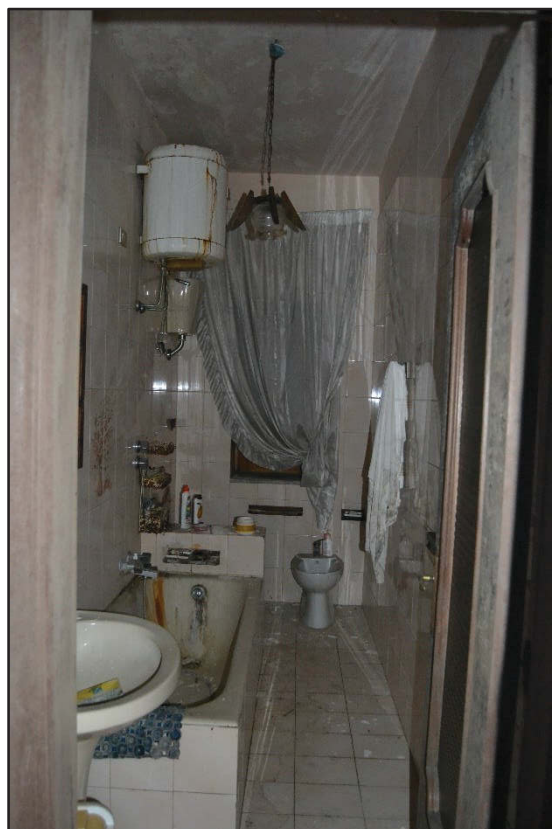


Foto 17



Foto 18



Foto 19



Foto 20



Foto 21



Foto 22



Foto 23

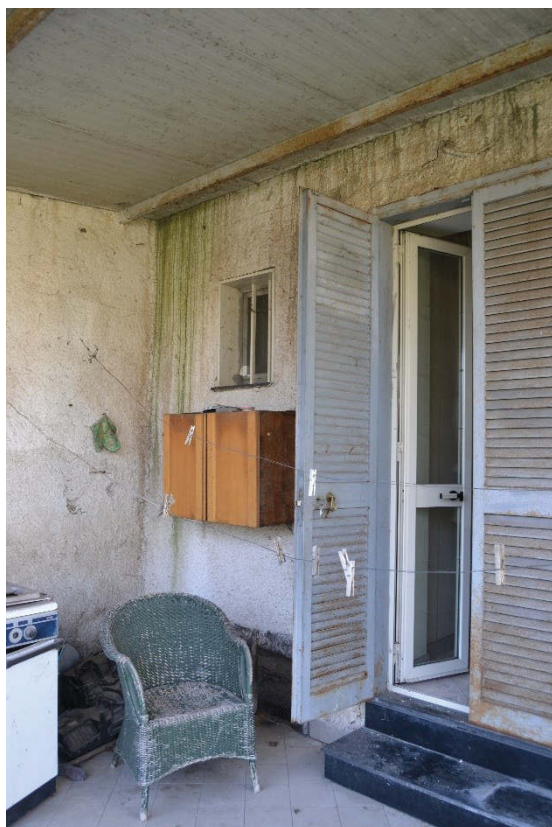


Foto 24



Foto 25



Foto 26

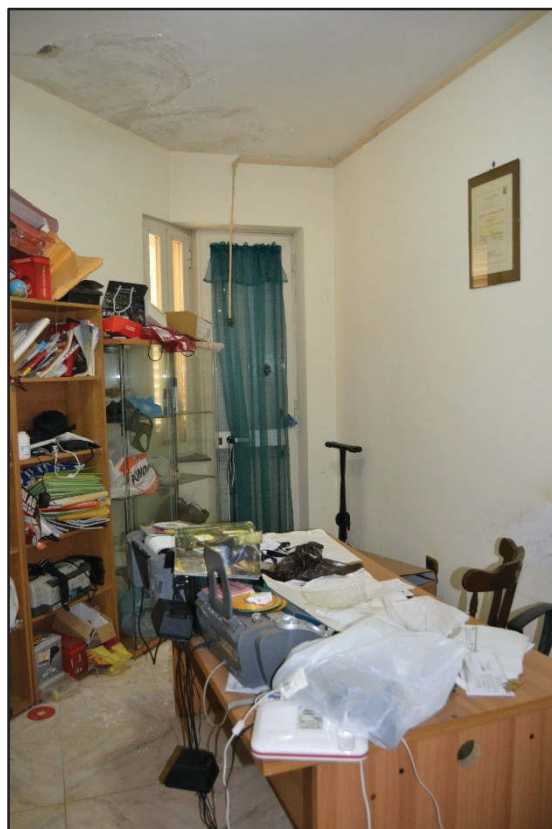


Foto 27



Foto 28



Foto 29

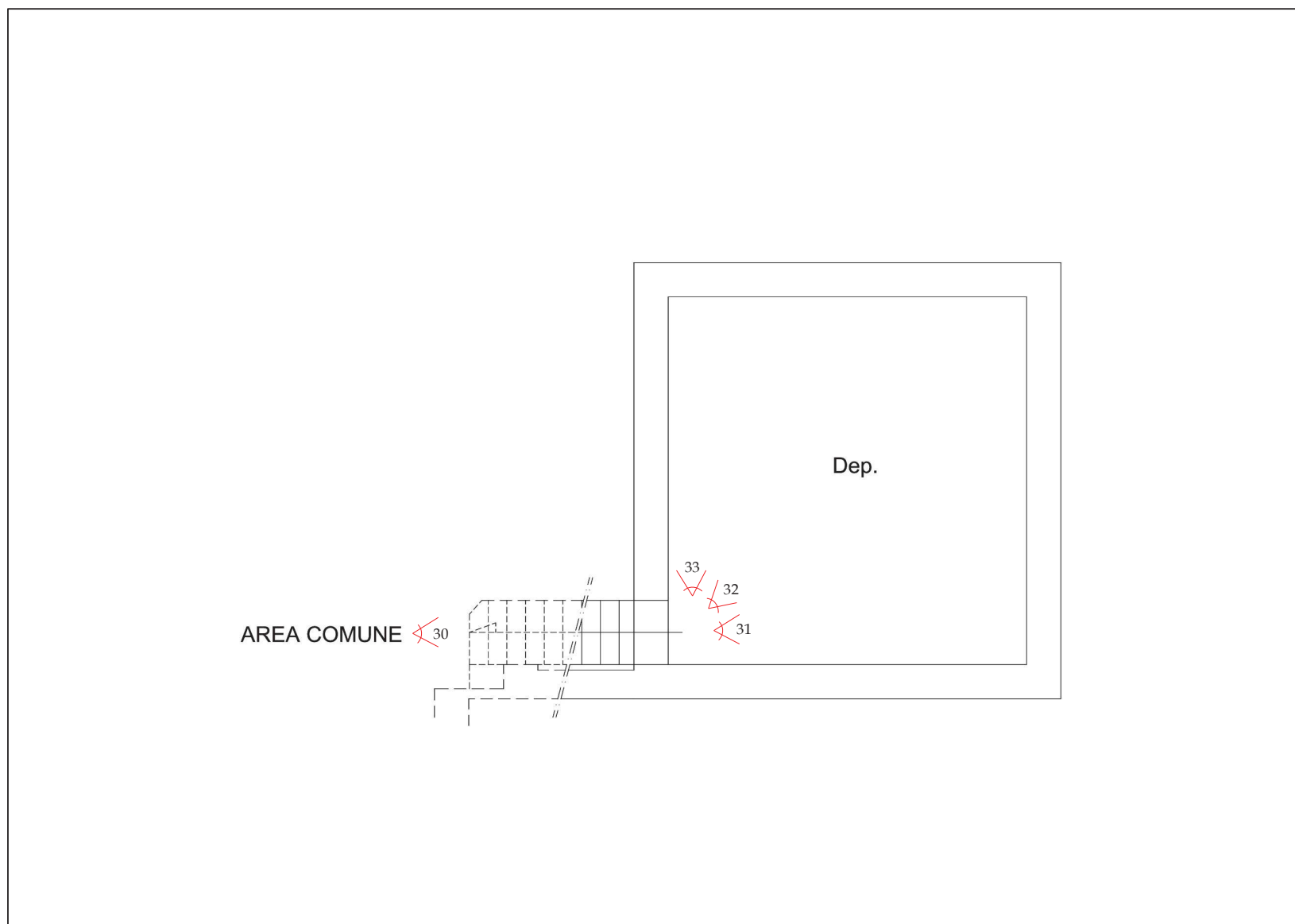


Figura 2: Coni ottici delle foto che seguono (Piano interrato – locale deposito censito col subalterno 5)

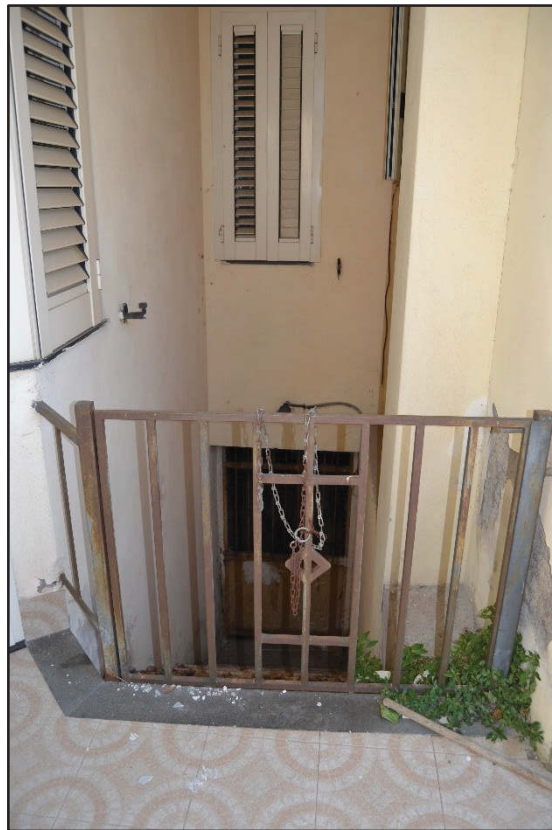


Foto 30



Foto 31



Foto 32



Foto 33

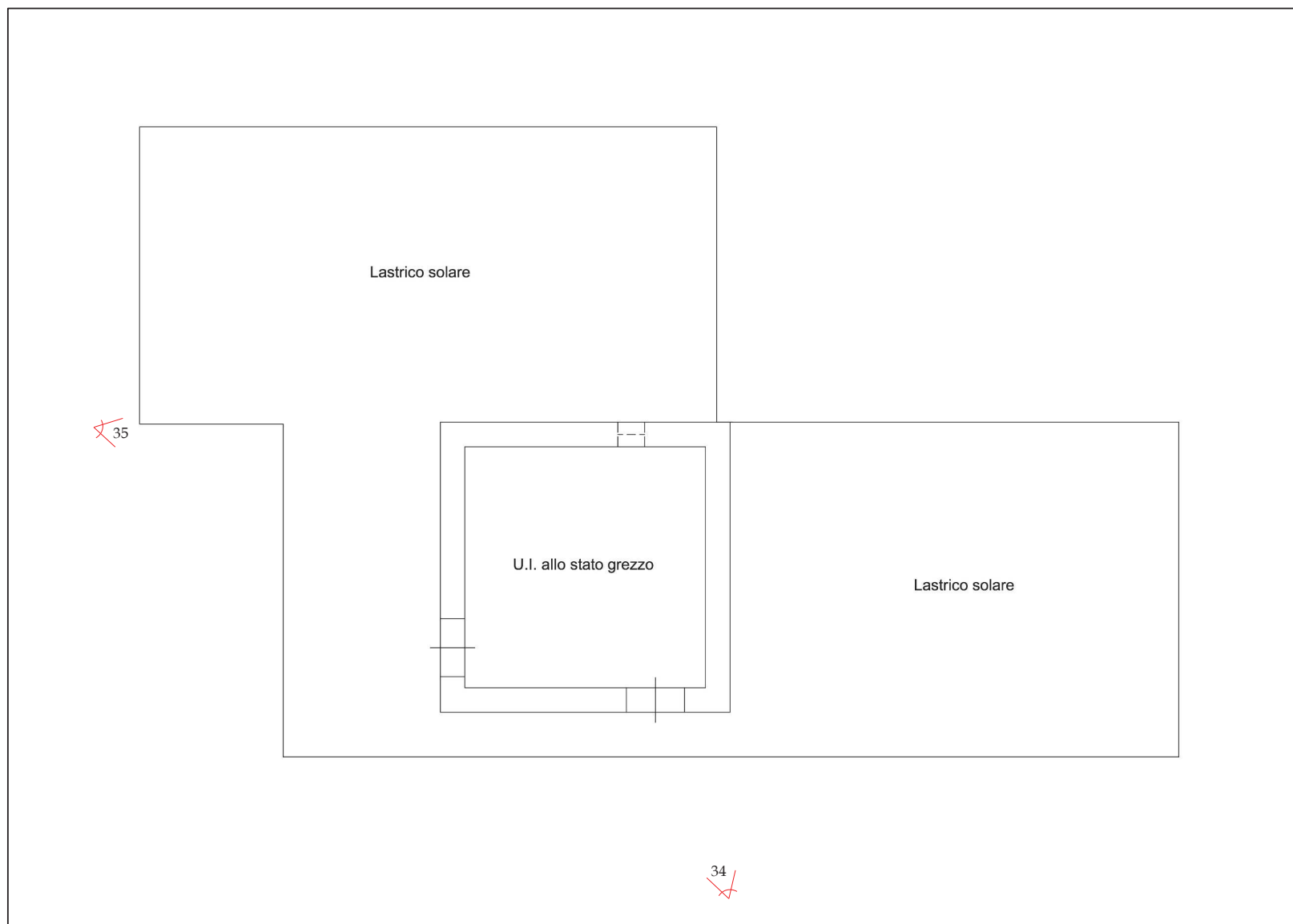


Figura 3: Coni ottici delle foto che seguono (Primo piano – U.I. allo stato grezzo censita col subalterno 6)



Foto 34

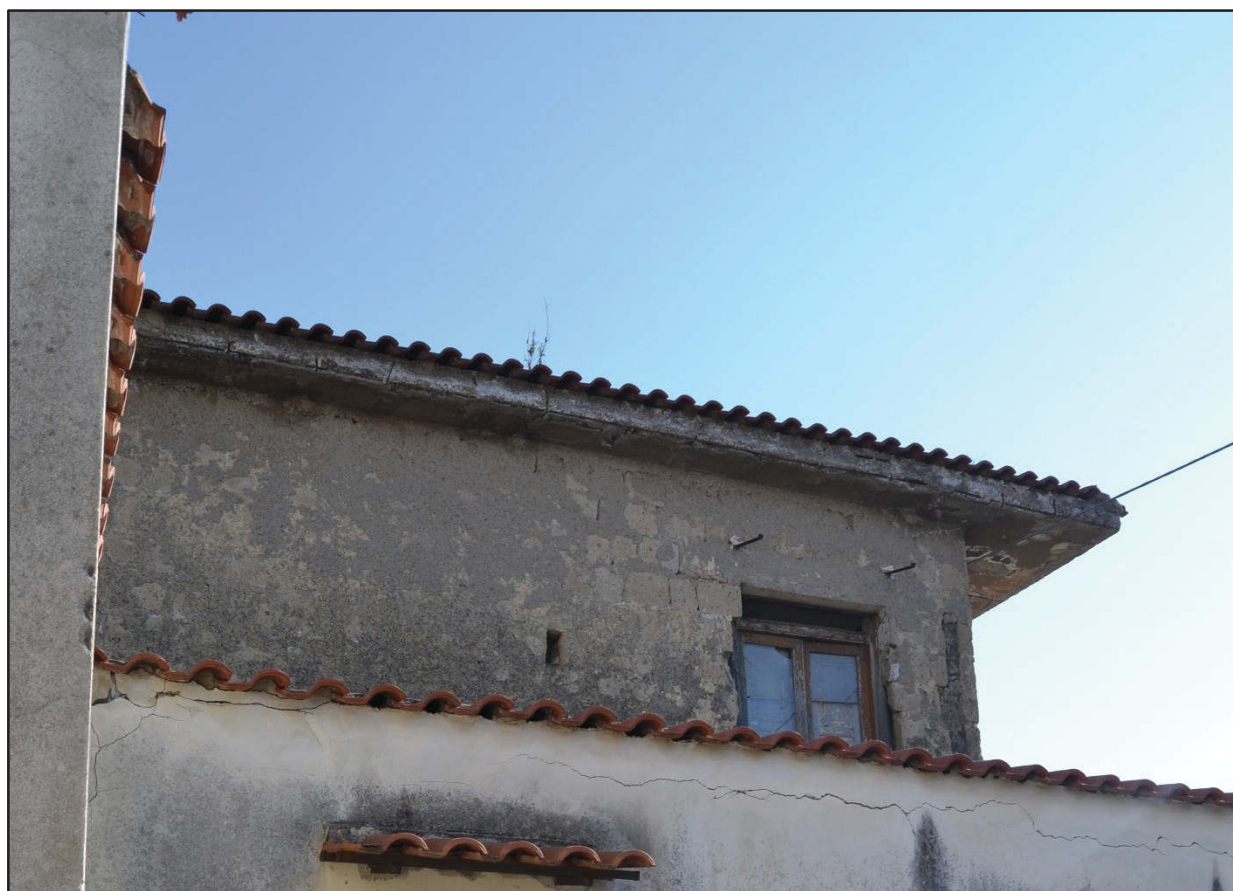


Foto 35

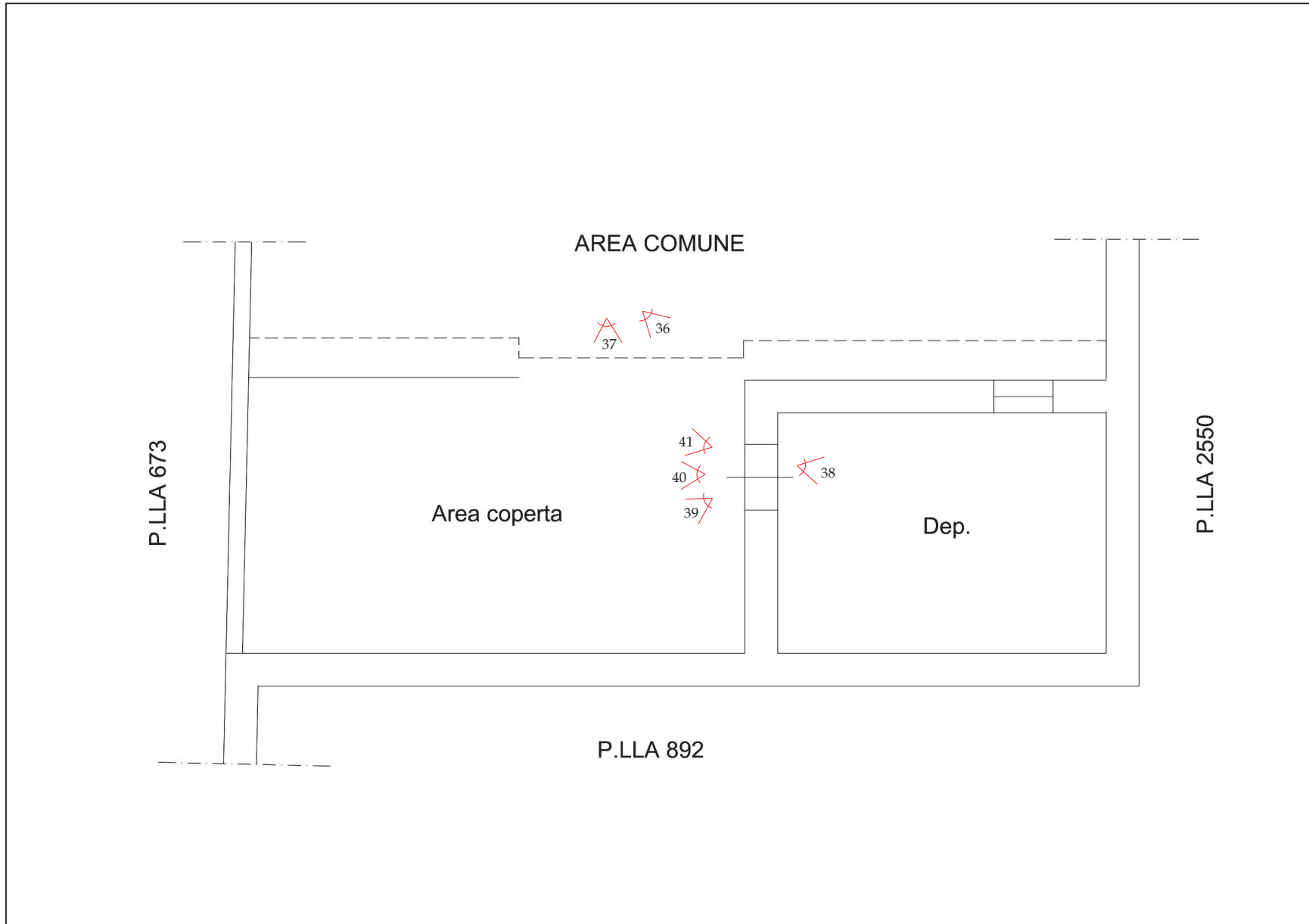


Figura 4: Coni ottici delle foto che seguono (Piano terra – locale deposito censito col subalterno 4 ed adiacente area coperta)



Foto 36



Foto 37



Foto 38

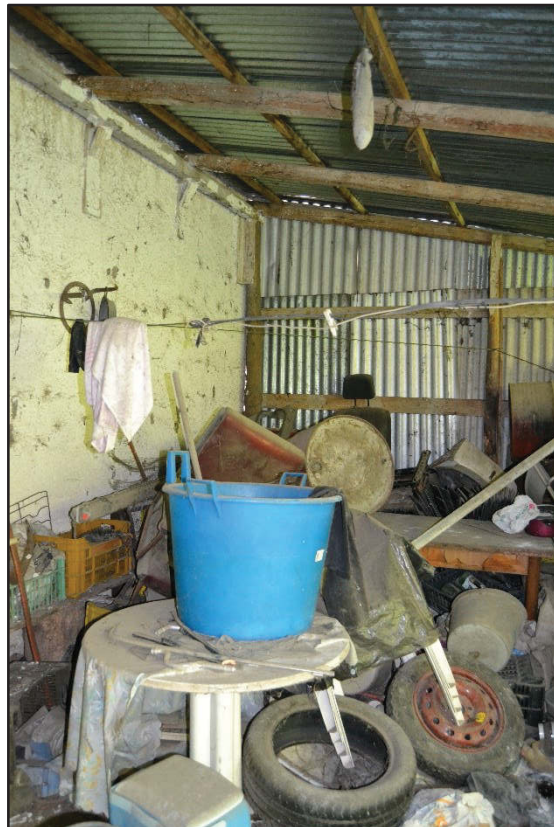


Foto 39

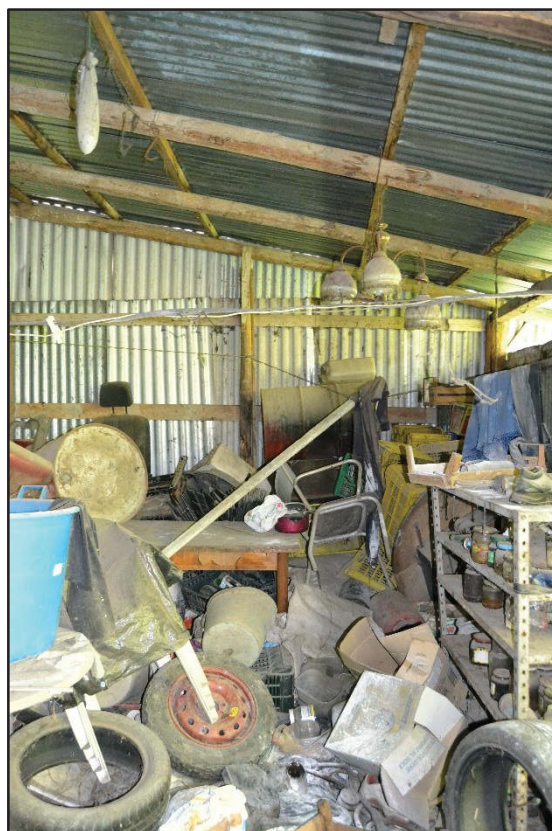


Foto 40

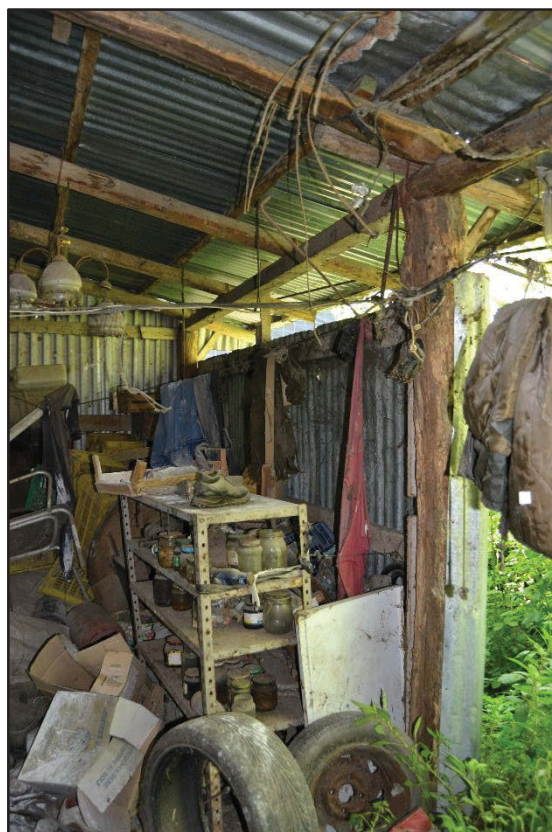


Foto 41

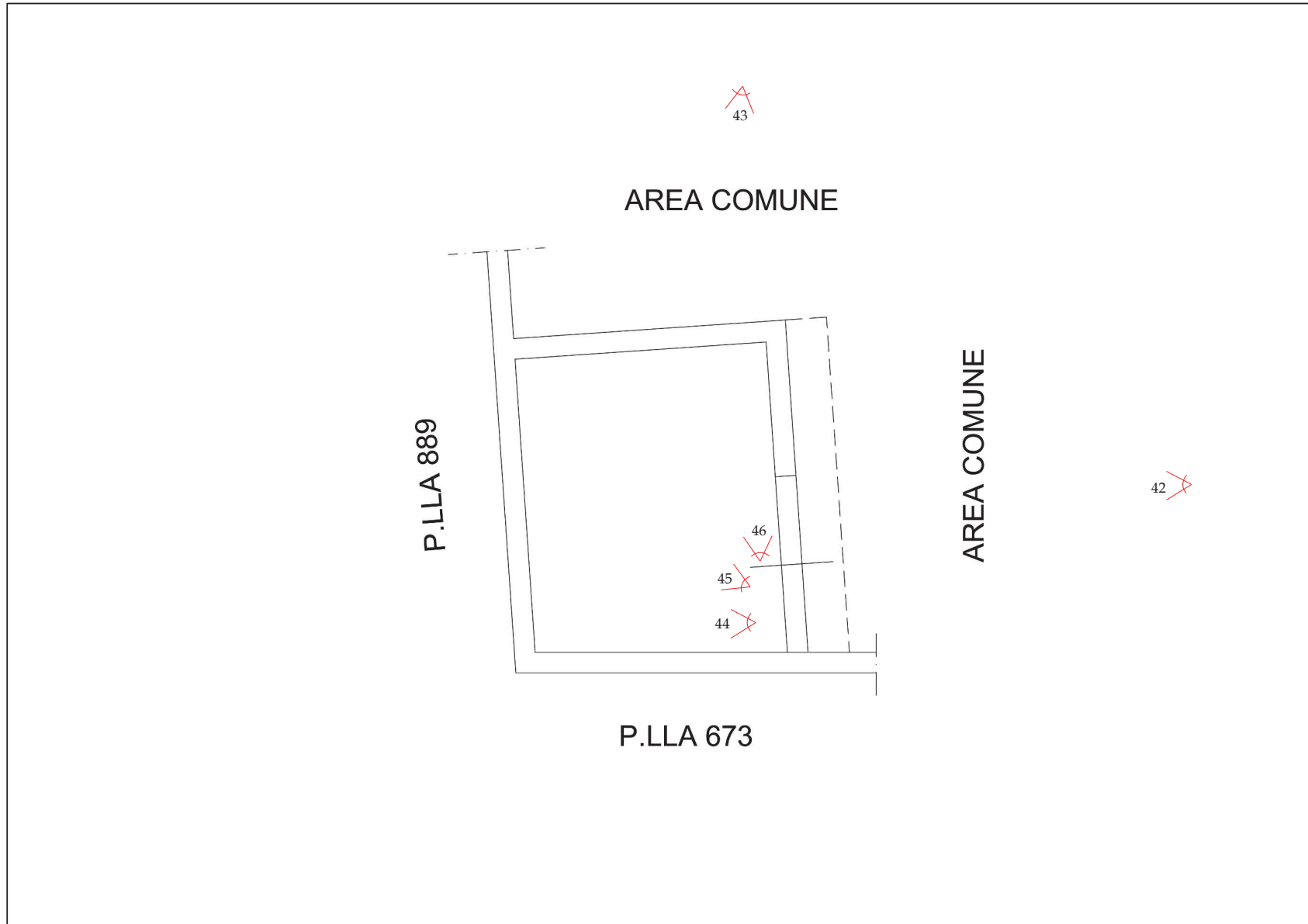


Figura 5: Coni ottici delle foto che seguono (Piano terra – costruzione abusiva non censita al Catasto Fabbricati)



Foto 42



Foto 43



Foto 44



Foto 45



Foto 46