



Foto da 1 a 5, fabbricato comprendente il lotto in oggetto, prospetti su via pubblica denominata VIA SPAGNA



Foto da 6 a10, viste della zona



Foto 11-12-13 , area condominiale e rampa di accesso al piano garage

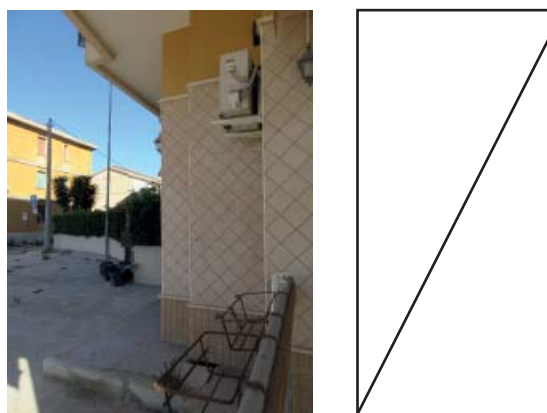
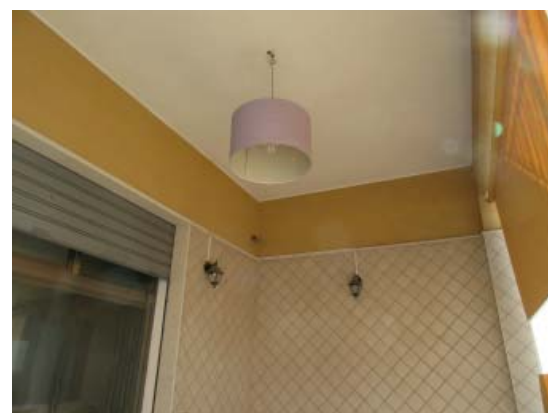


Foto da 16 a 20, portico

Foto 14 e 15, fabbricato su Via Spagna con alle spalle Via Mazzanti





Foto da 21 a 25, prospetti su via pubblica denominata VIA SPAGNA

CIVICO 8



Foto da 26 a 38 \_ vano A1, negozio

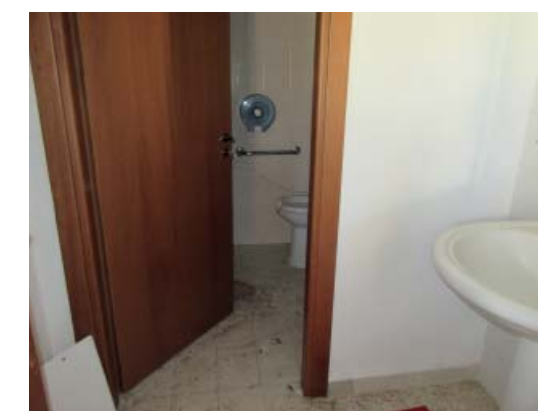
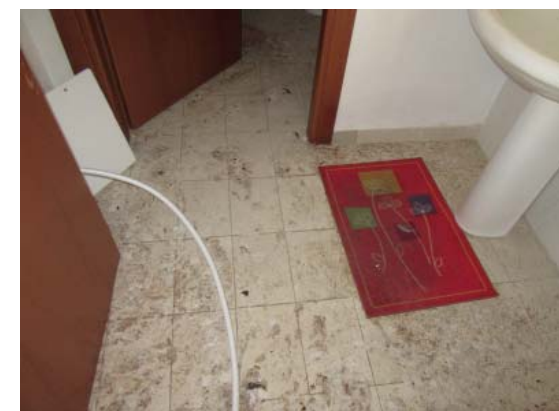
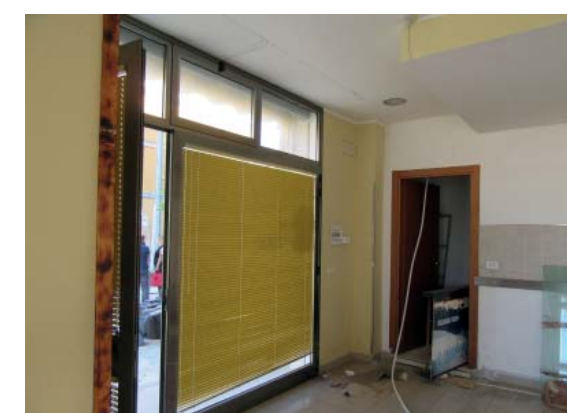


Foto 39-40-41, vano A3, antiwc



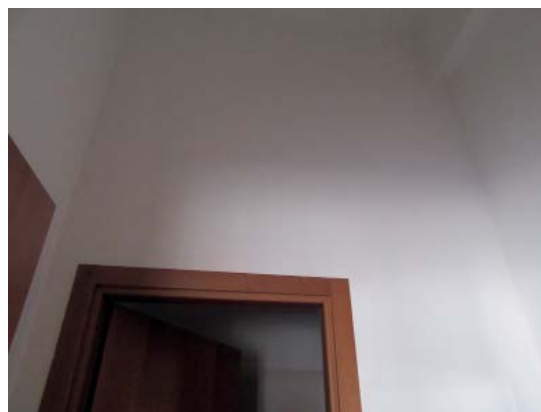


Foto 42,43\_vano A3

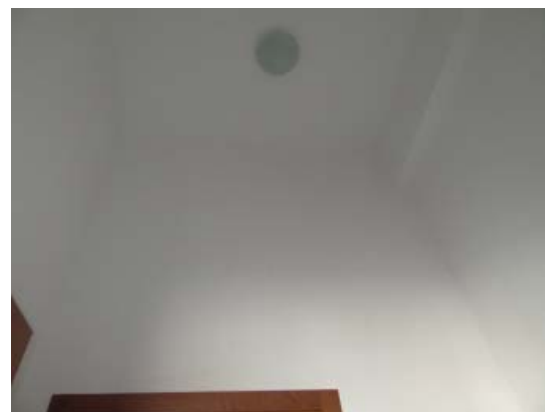


Foto 44,45\_vano A4, servizio igienico



Foto 46,47,48\_vano A3,



Foto 49,50, 51,\_vano A3

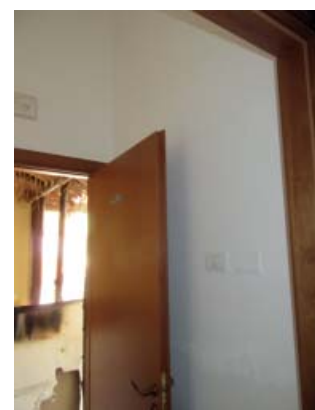


Foto 52,53, 54\_vano A4

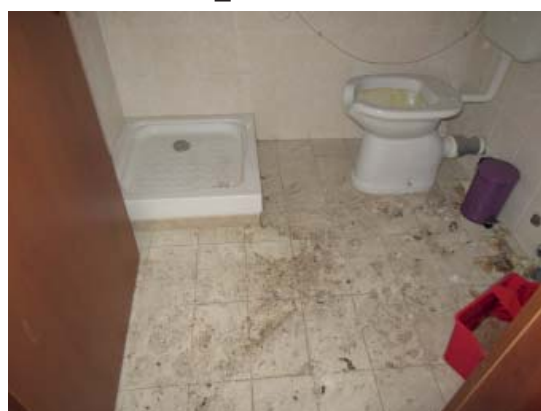
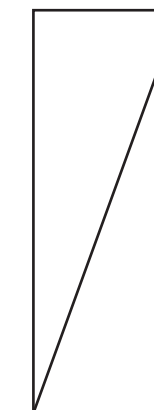
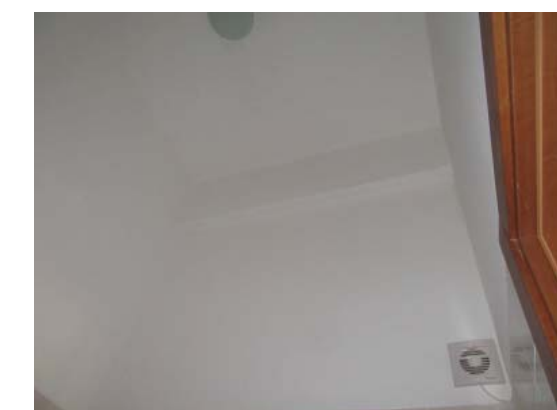


Foto da 55 a 59 vano A4

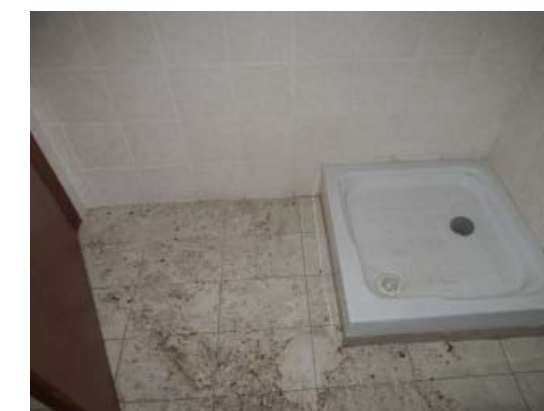
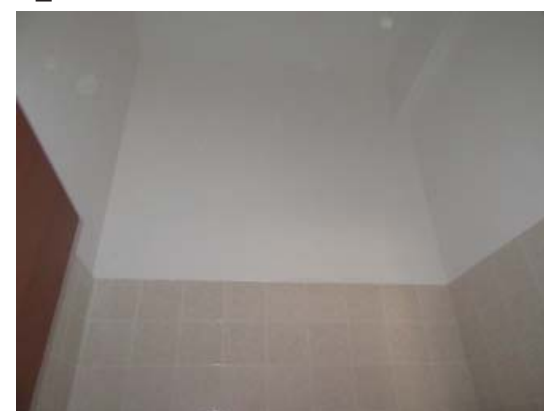


Foto 60-61\_vano A1



Foto 62, porta ingresso al vano A2 - Foto da 63 a 65 vano A2

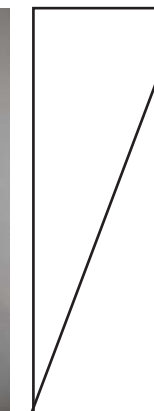
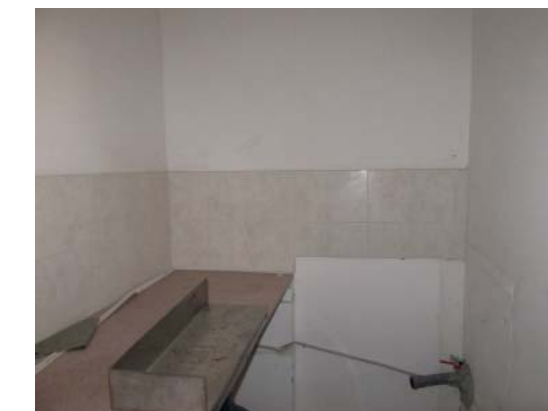






Foto da 66 a 71, vano A2



Foto da 72 a 78, vano A2



Foto da 79 a 81 , vano A1 - quadro elettrico

Foto da 82 a 84 , vani A1-2 - impianti



Foto da 84 a 87, portico