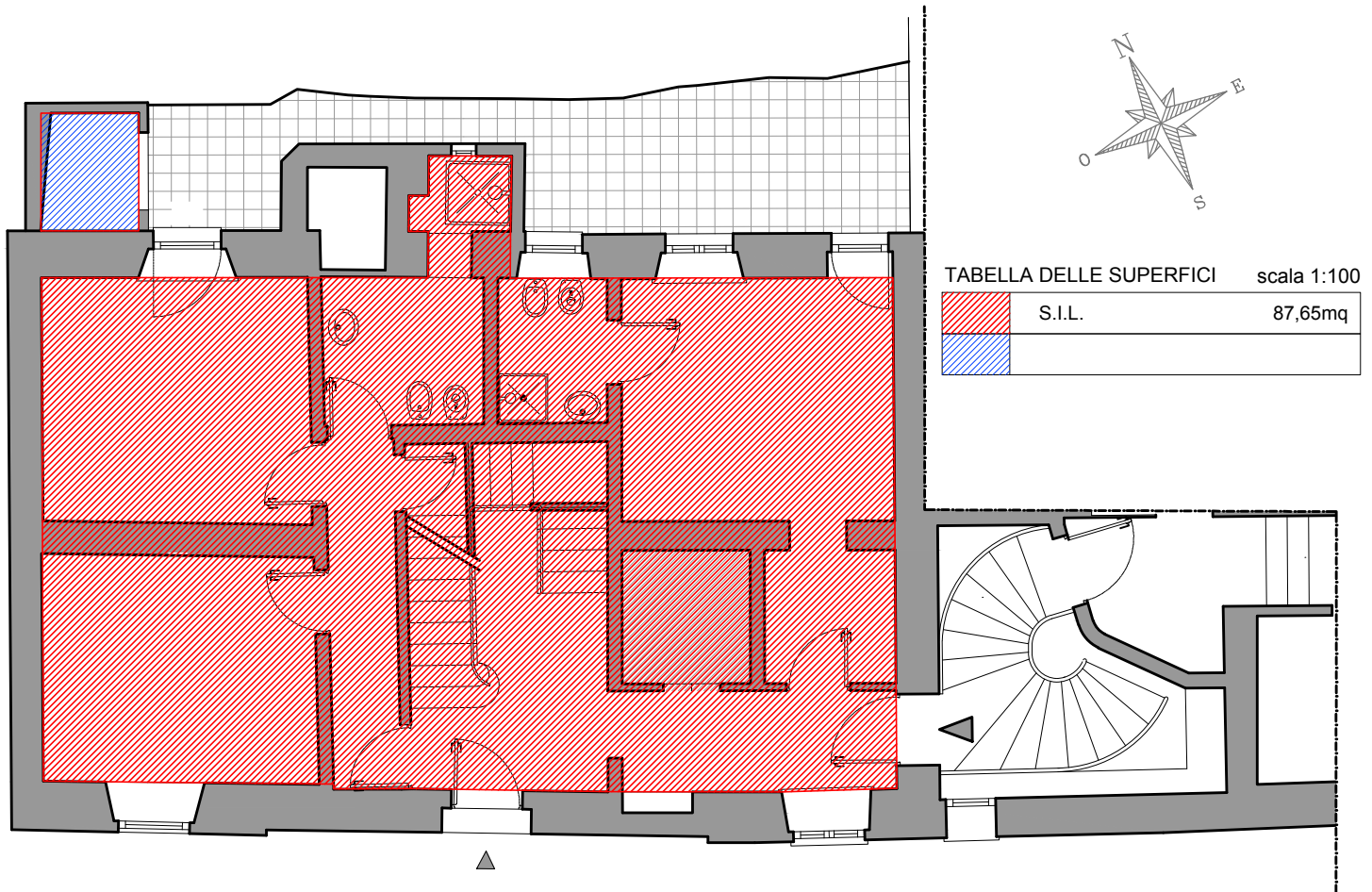
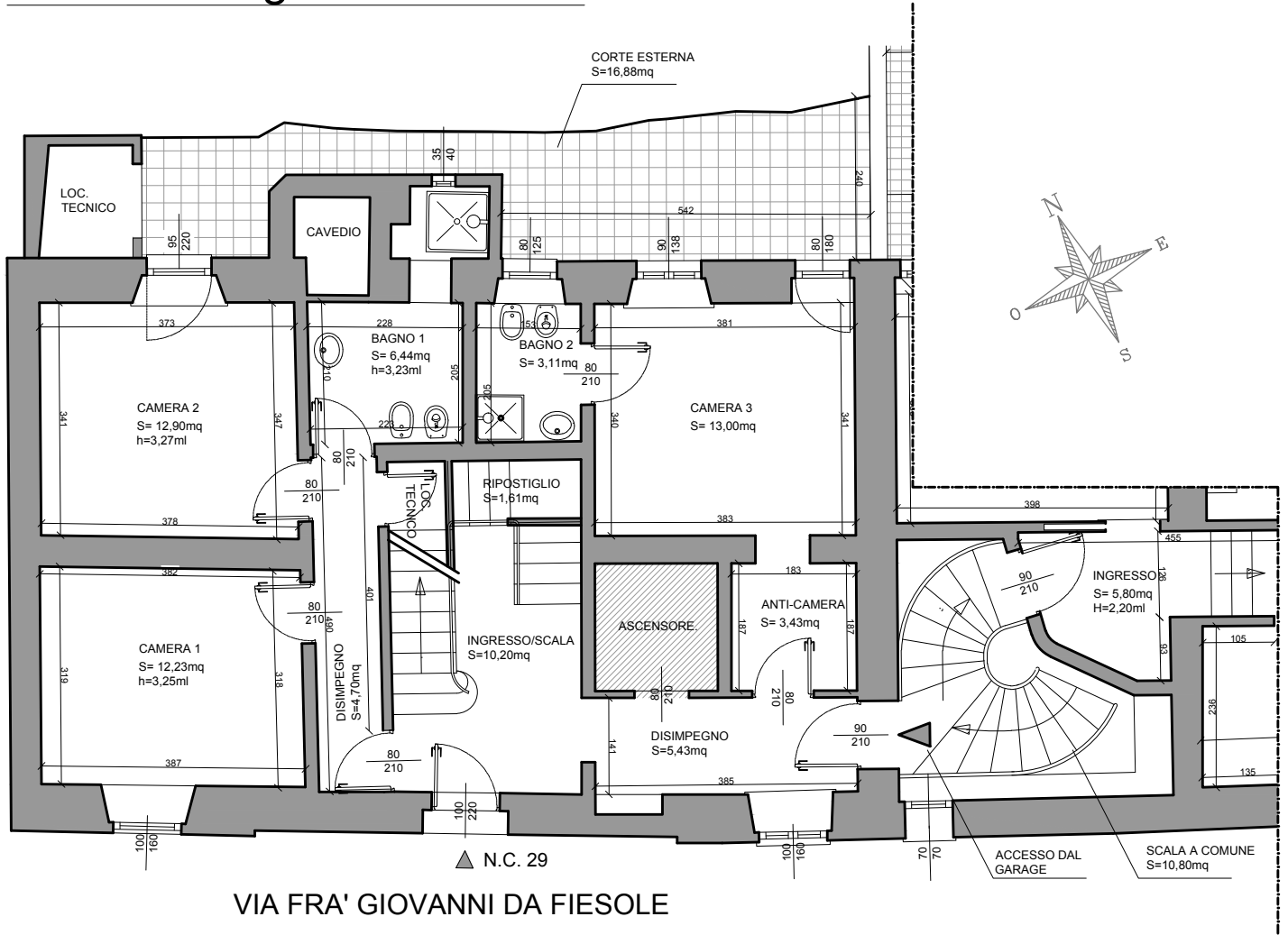


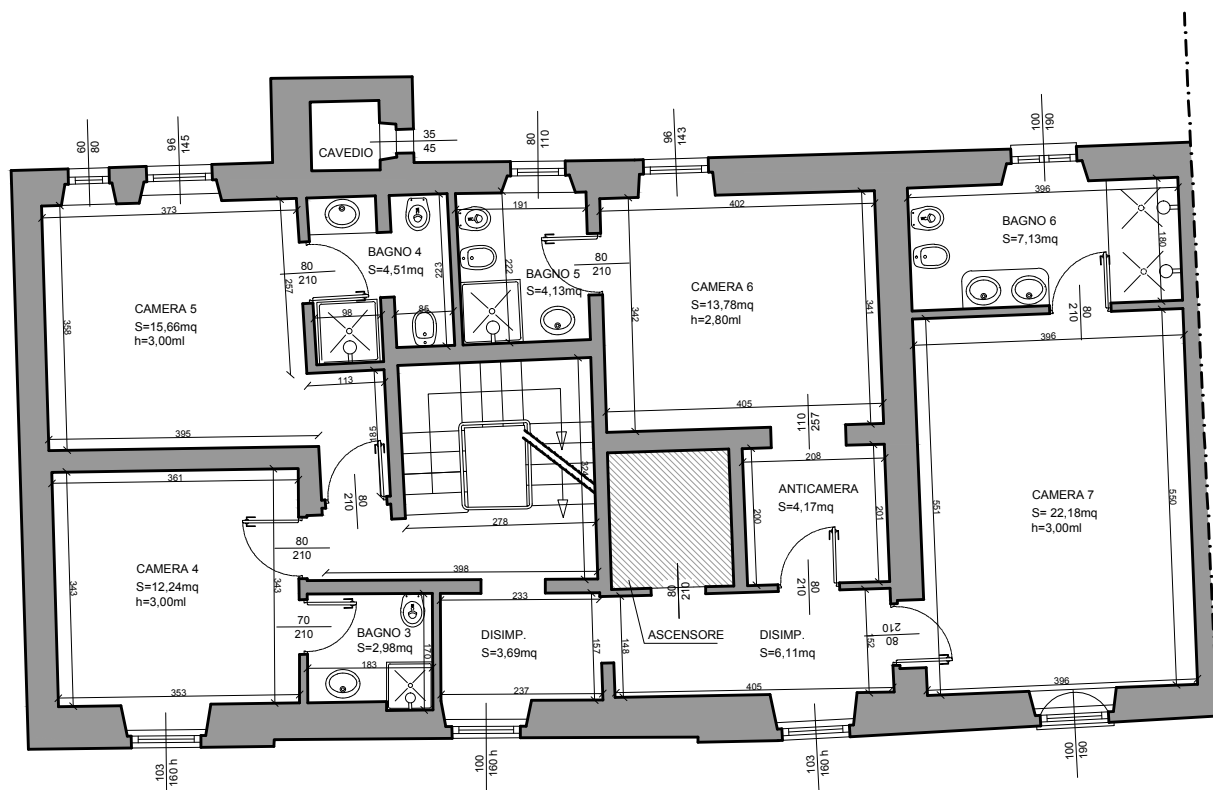
# ABITAZIONE "VILLA" - PIANO TERRA

## stato dei luoghi scala 1:100



# ABITAZIONE "VILLA" - PIANO PRIMO

## stato dei luoghi scala 1:100



VIA FRA' GIOVANNI DA FIESOLE

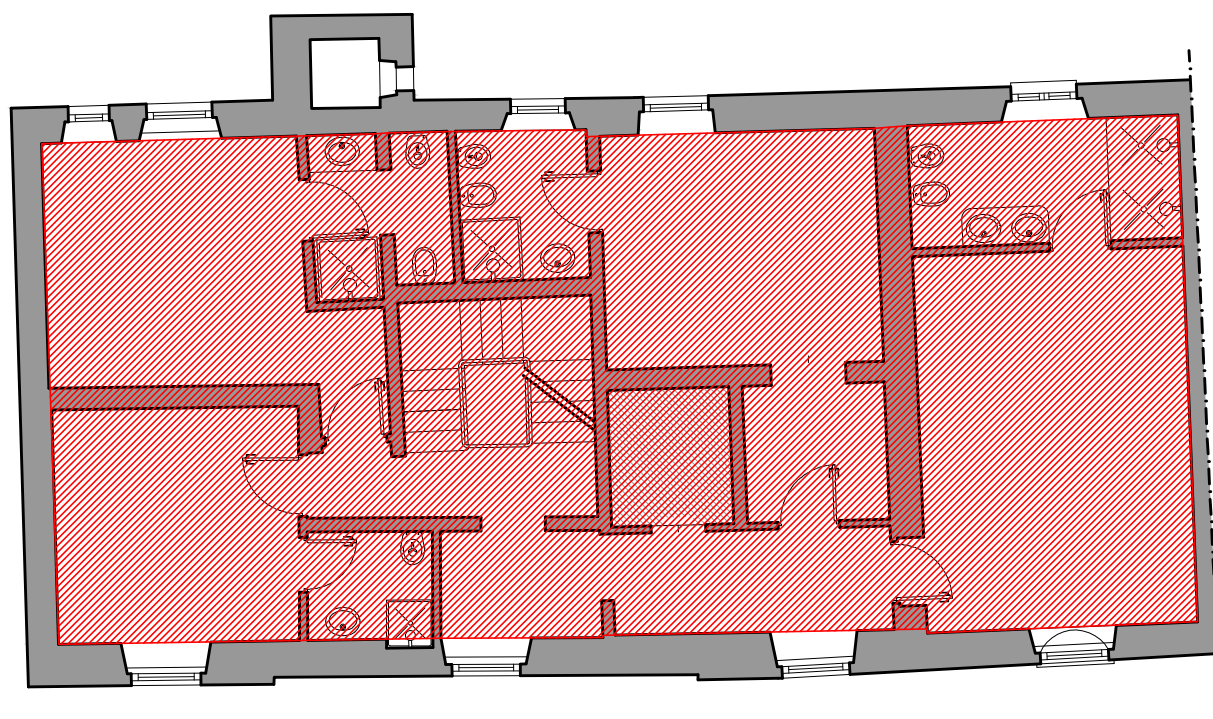
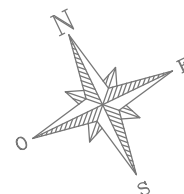


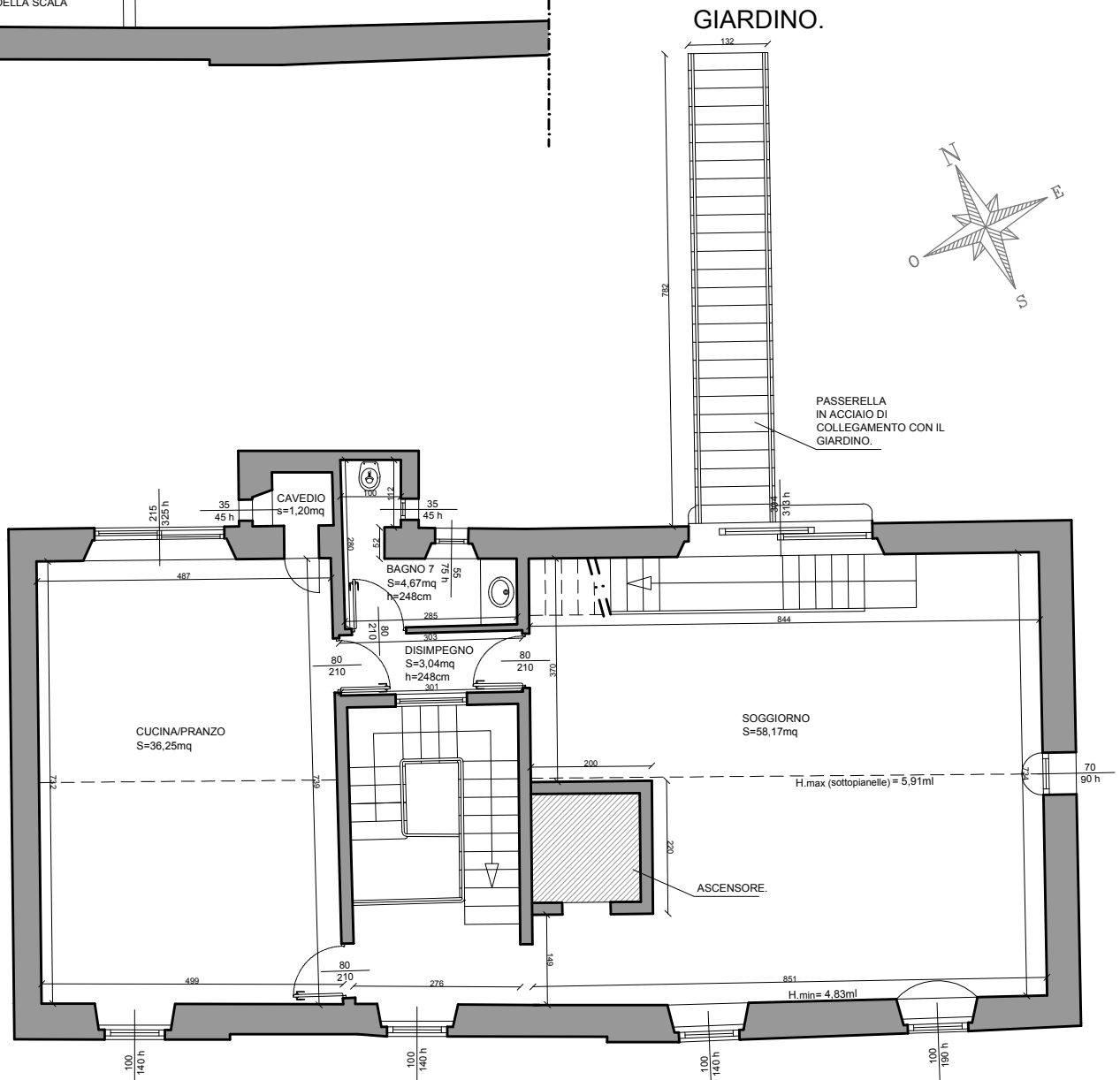
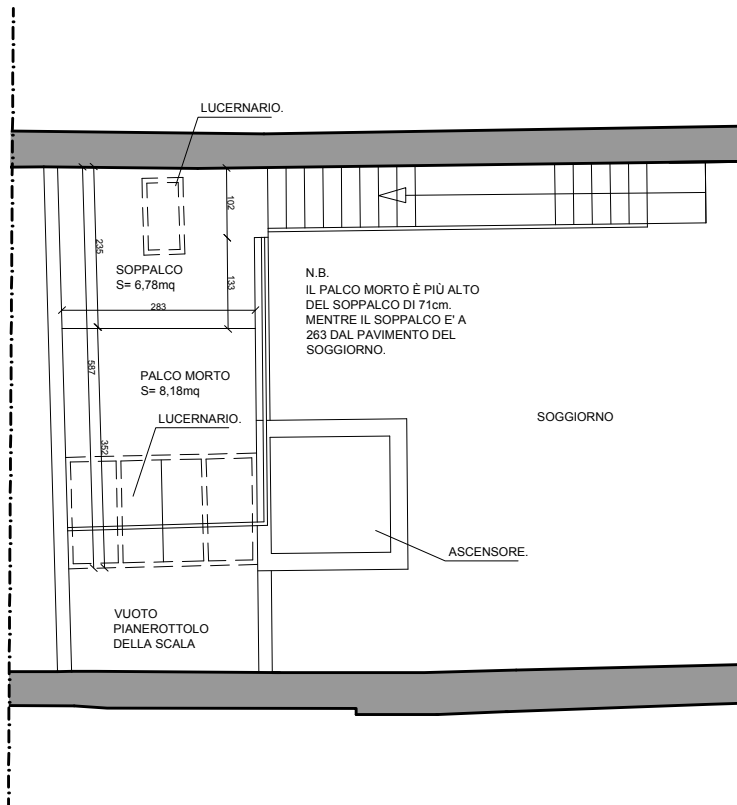
TABELLA DELLE SUPERFICI scala 1:100

	S.I.L.	100,34mq



# ABITAZIONE "VILLA" - PIANO SECONDO E SOPPALCO

stato dei luoghi scala 1:100



# ABITAZIONE "VILLA" - PIANO SECONDA E

## SOPPALCO

stato dei luoghi scala 1:100

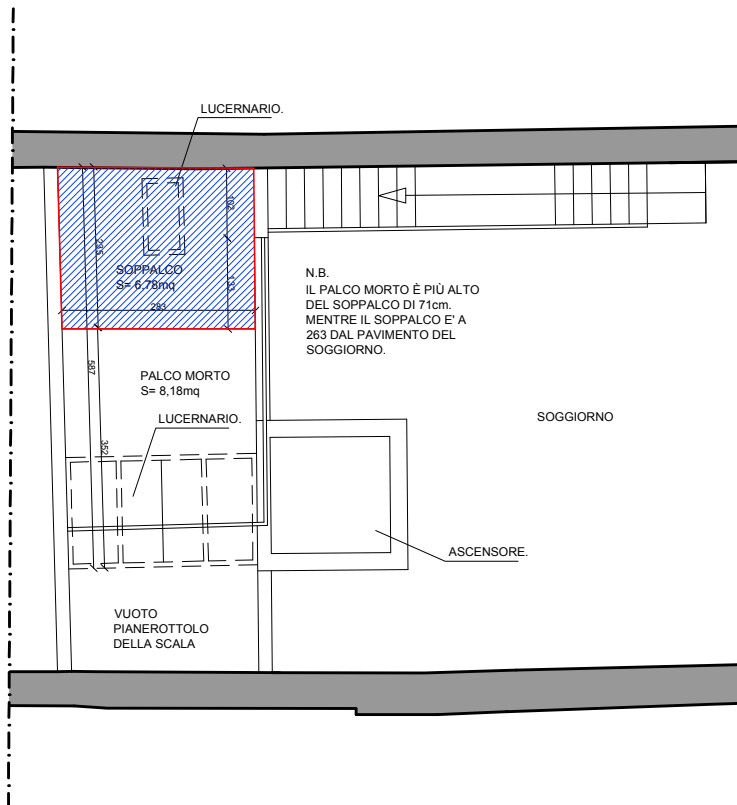
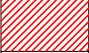

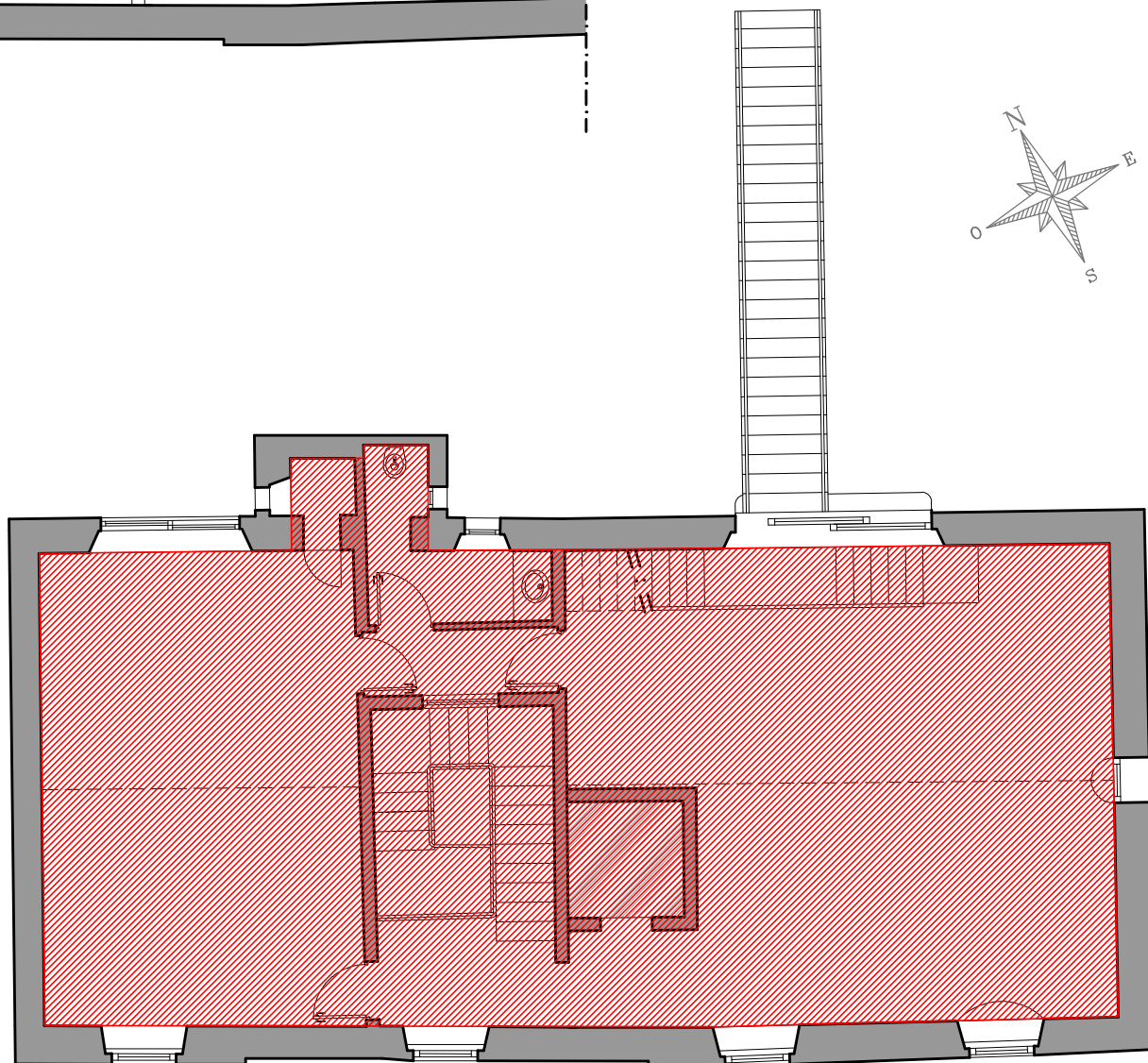


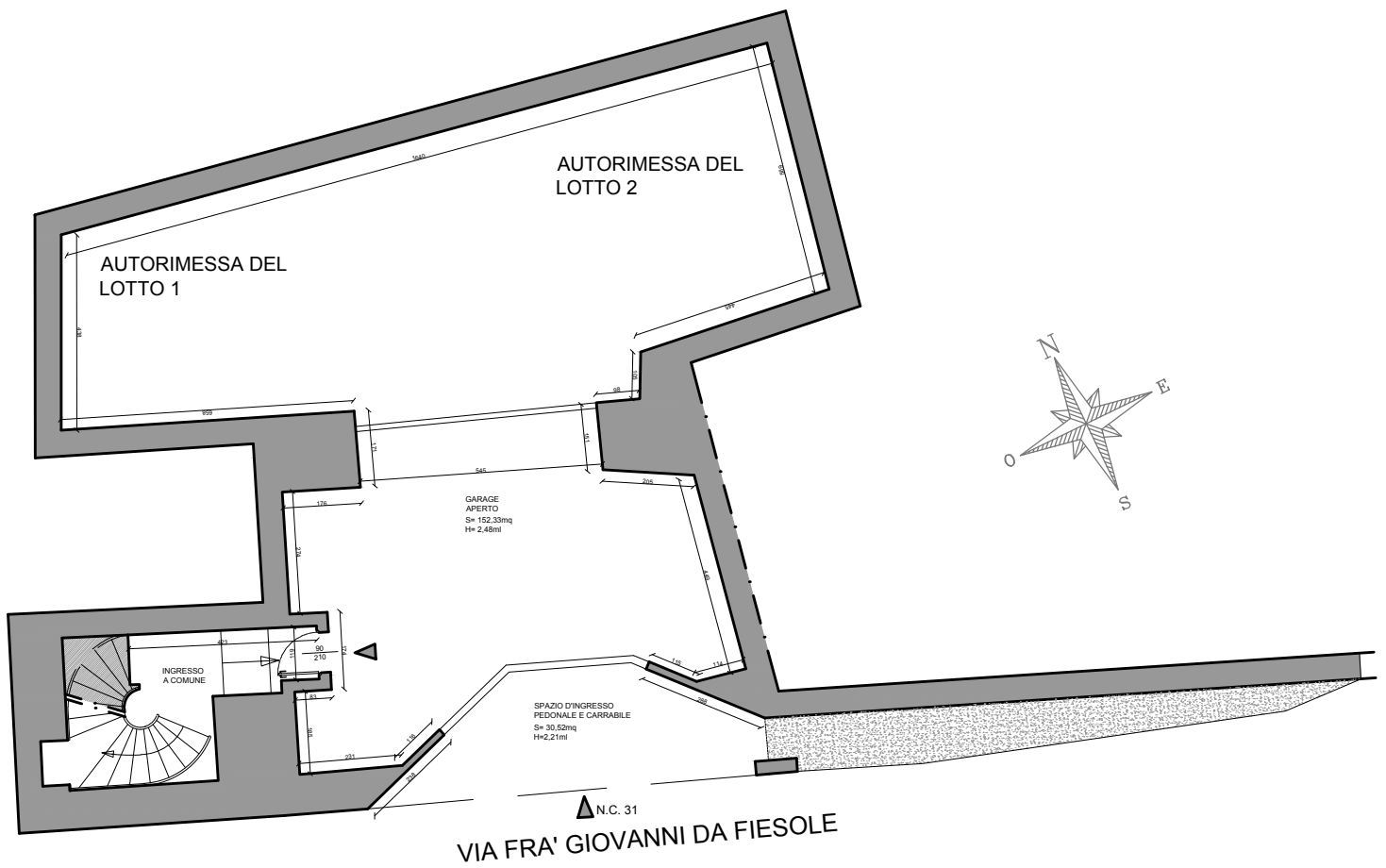
TABELLA DELLE SUPERFICI scala 1:100

	S.I.L. P.T	87,65mq
	S.I.L. I.P.	100,34mq
	S.I.L. II P	102,70mq
	<b>S.I.L. TOTALE</b>	<b>290,69mq</b>
	<b>S. SOPPALCO II P</b>	<b>6,78mq</b>



# AUTORIMESSA "VILLA" - PIANO SEMINTERRATO

stato dei luoghi scala 1:100



PIANO SEMINTERRATO