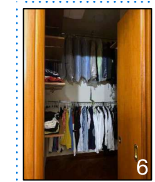
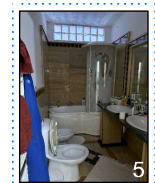
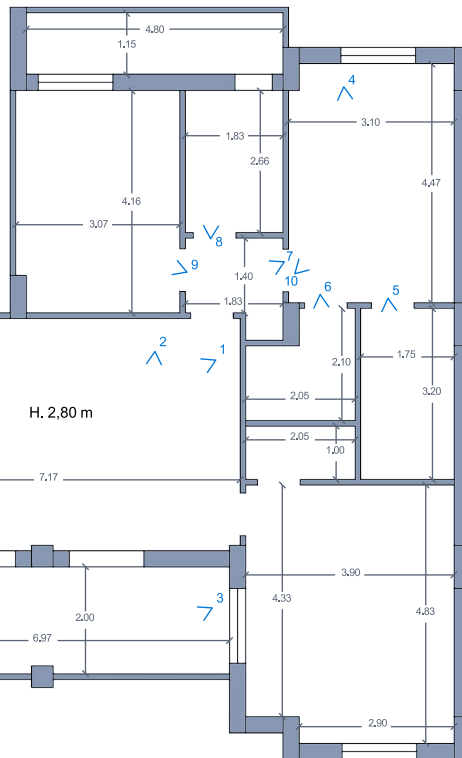
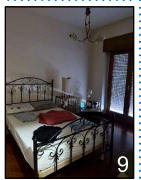
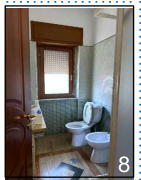
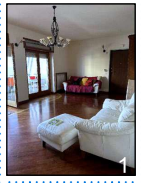


3 – Planimetrie di rilievo



**PLANIMETRIA QUOTATA
CON PUNTI OSSERVAZIONE FOTO**

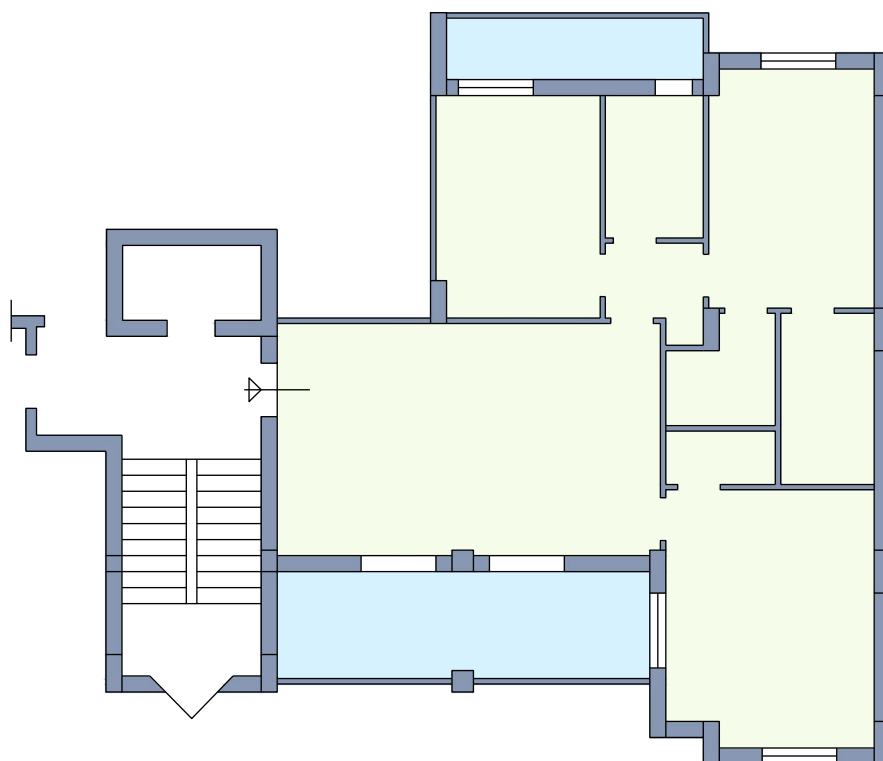
Abitazione - Piano Primo

Comune di Cosenza
Via Raffaele Coscarella n°9
Foglio 6 Part 845 Sub 52
Scala 1:100



V₁₁

4 – Planimetrie con superfici



Superfici calpestabili	
Superfici interne	95,46 mq
Superfici balconi	19,40 mq
Superfici Totali	114,86 mq

SUPERFICI CALPESTABILI

Abitazione - Piano Primo

Comune di Cosenza
Via Raffaele Coscarella n°9
Foglio 6 Part 845 Sub 52
Scala 1:100

