



STUDIO TECNICO AMMINISTRATIVO

Dr.Ing. Grassi Massimiliano - Geom. Grassi Giangaleazzo

FOTOGRAFIE

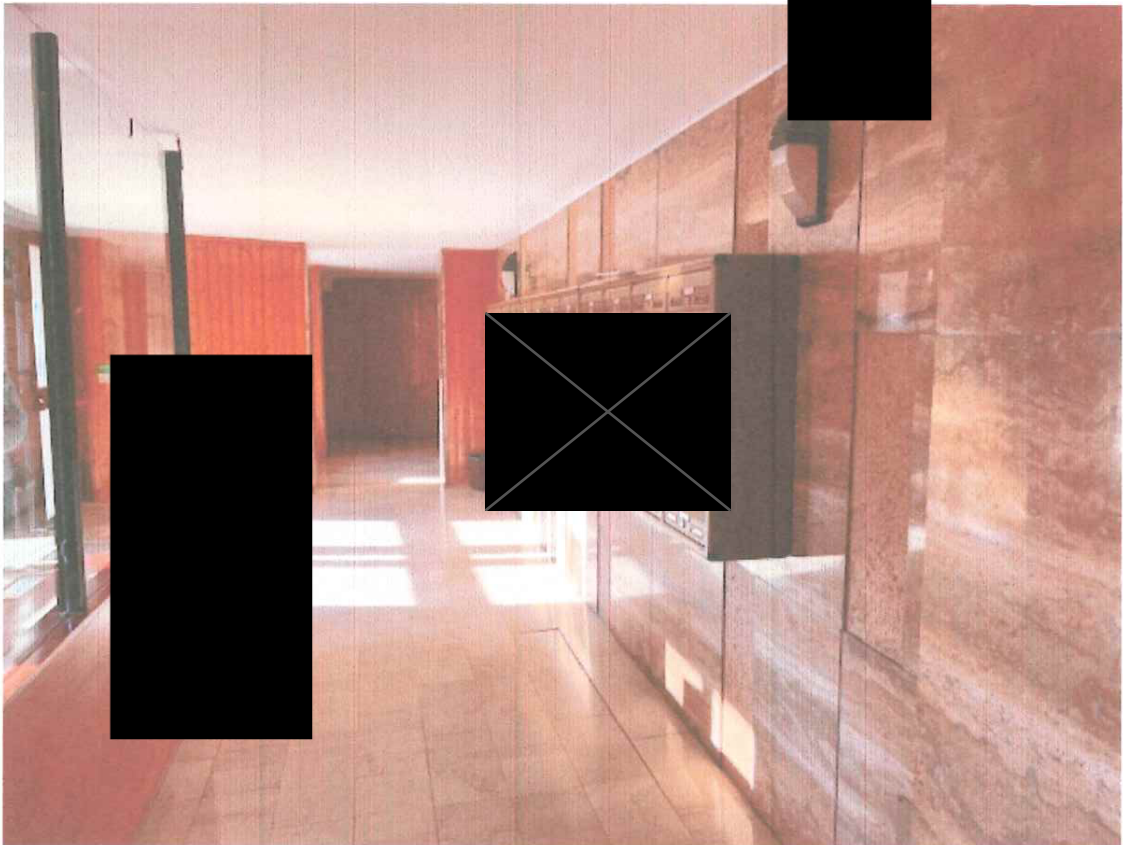


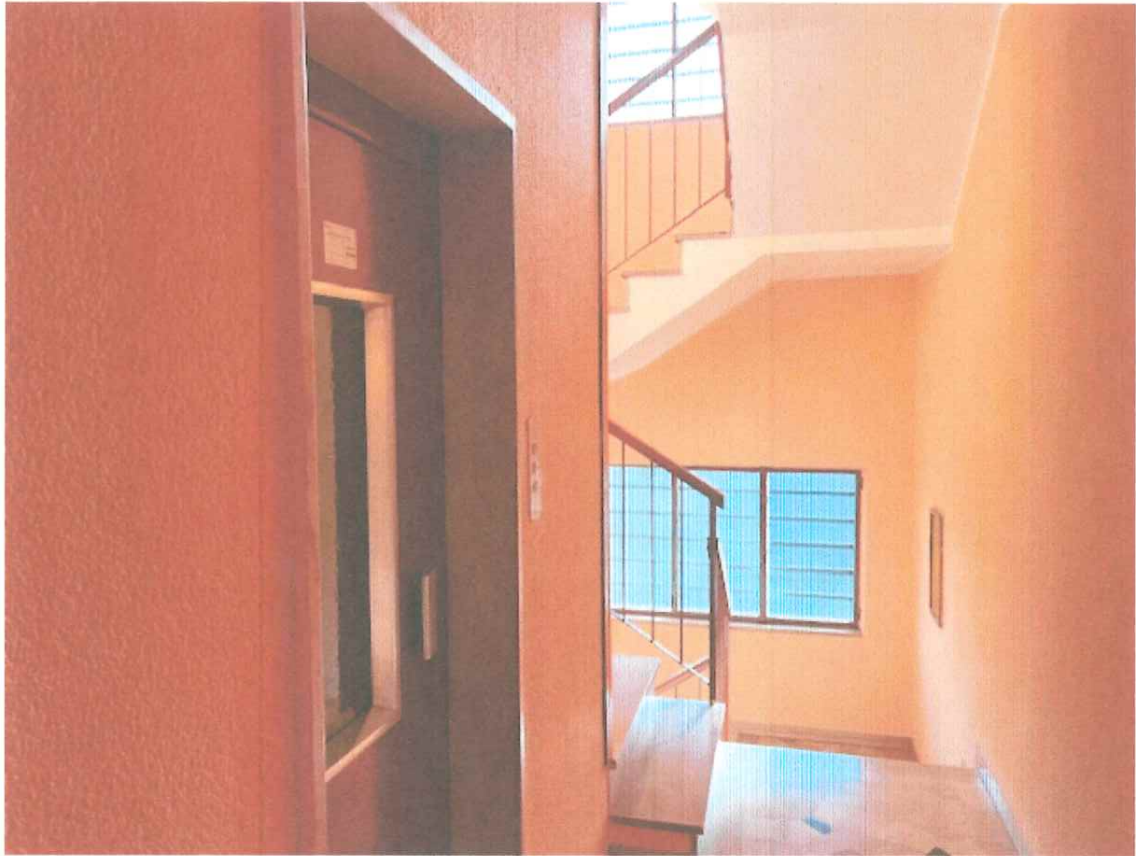
Esterno dell'immobile verso cortile





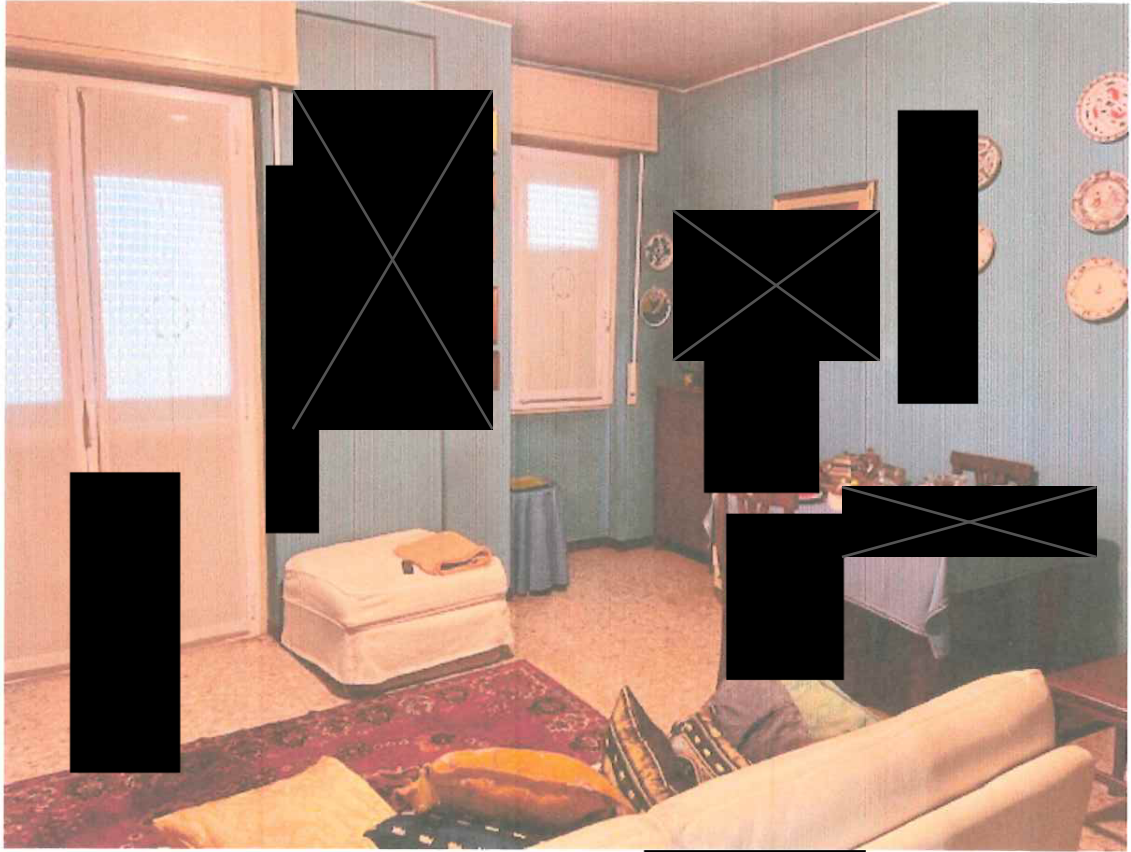
Parti comuni atrio di ingresso



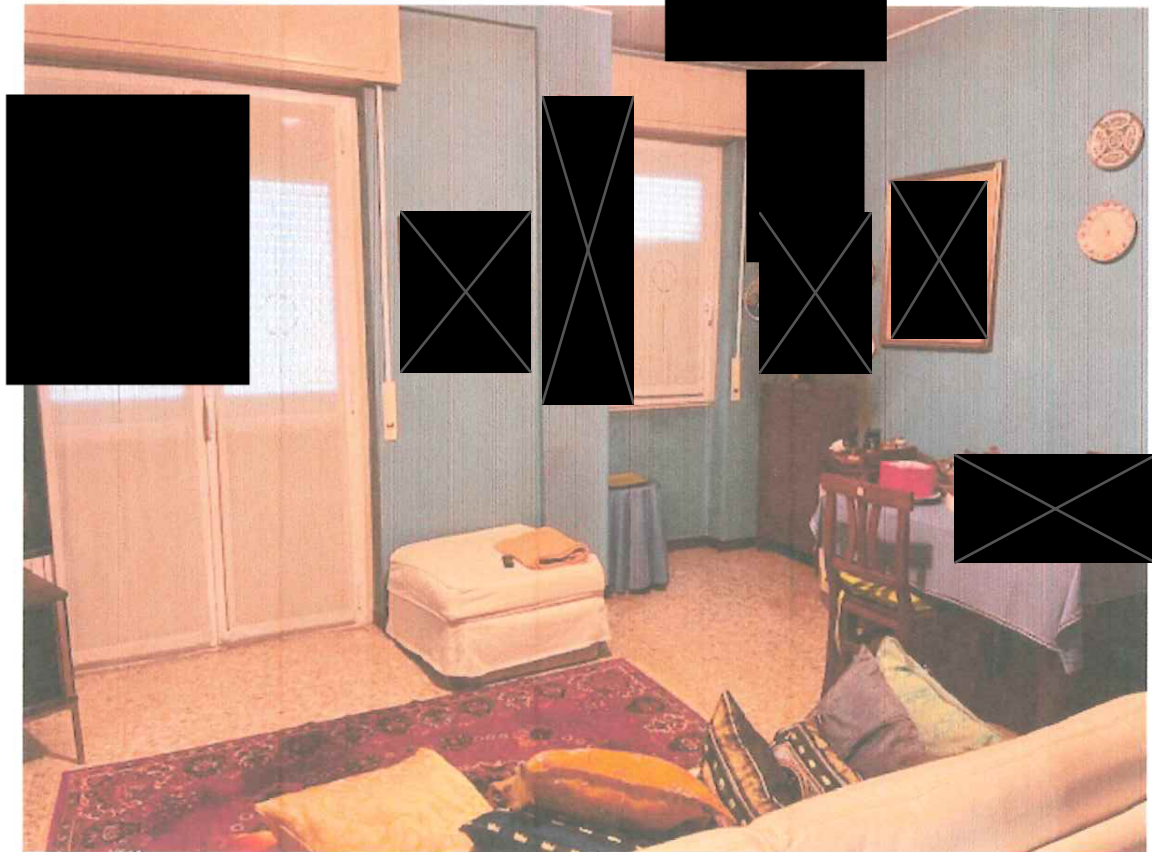


Parti comuni al piano 4°





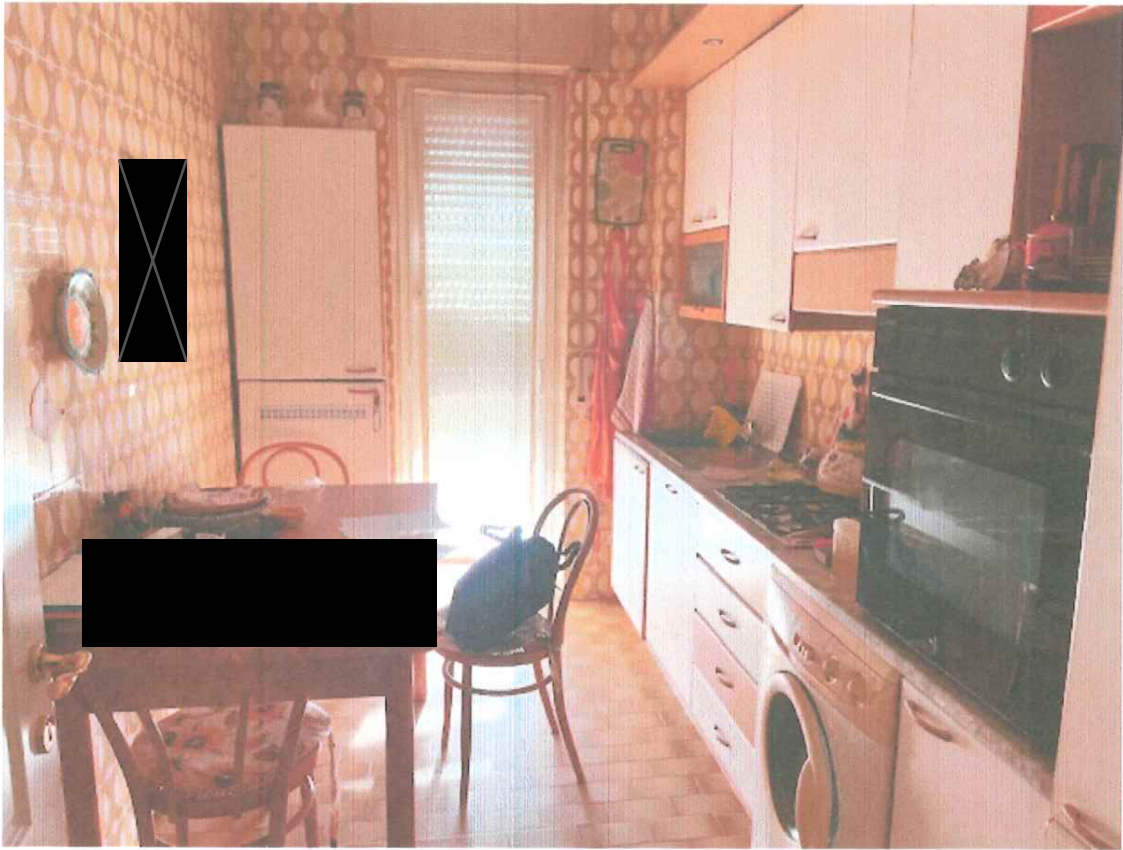
Soggiorno





Disimpegno





Cucina





Bagno





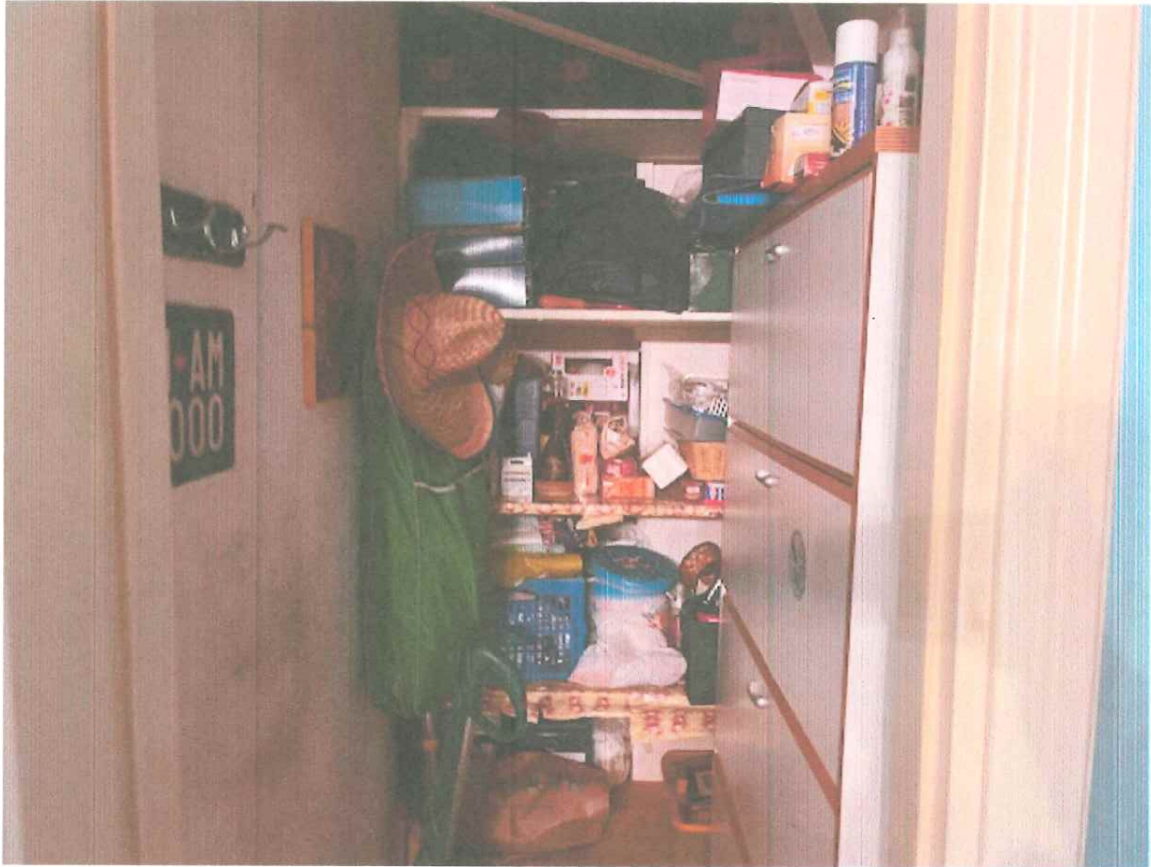
Camera da letto



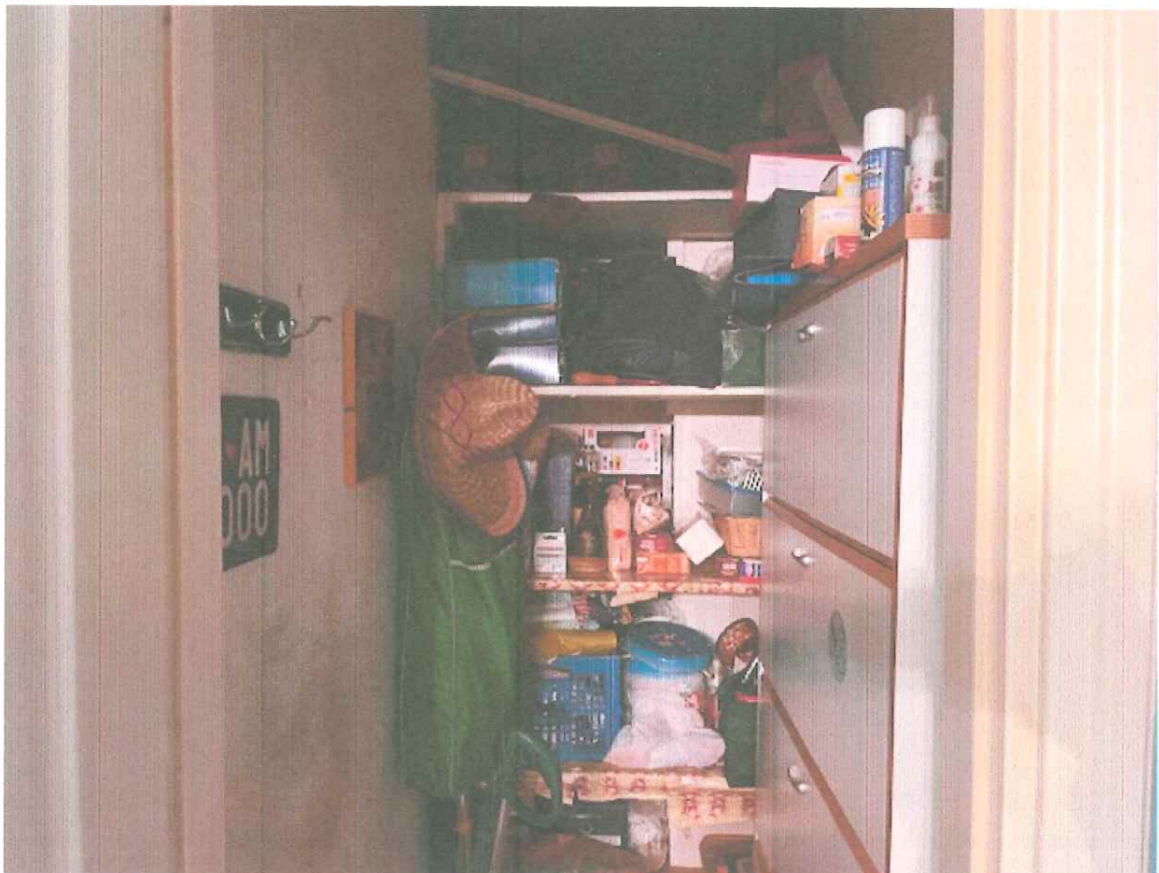


Camera da letto



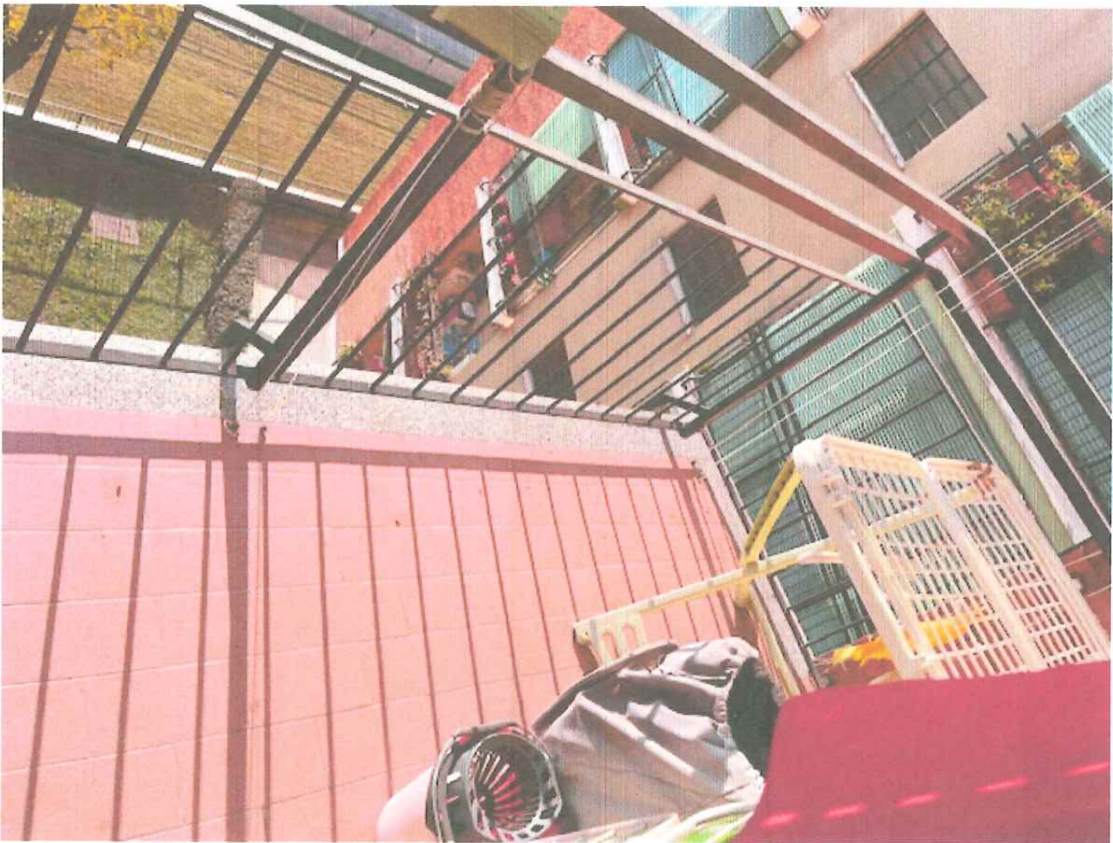


Ripostiglio





Balcone padronale



Balcone di servizio