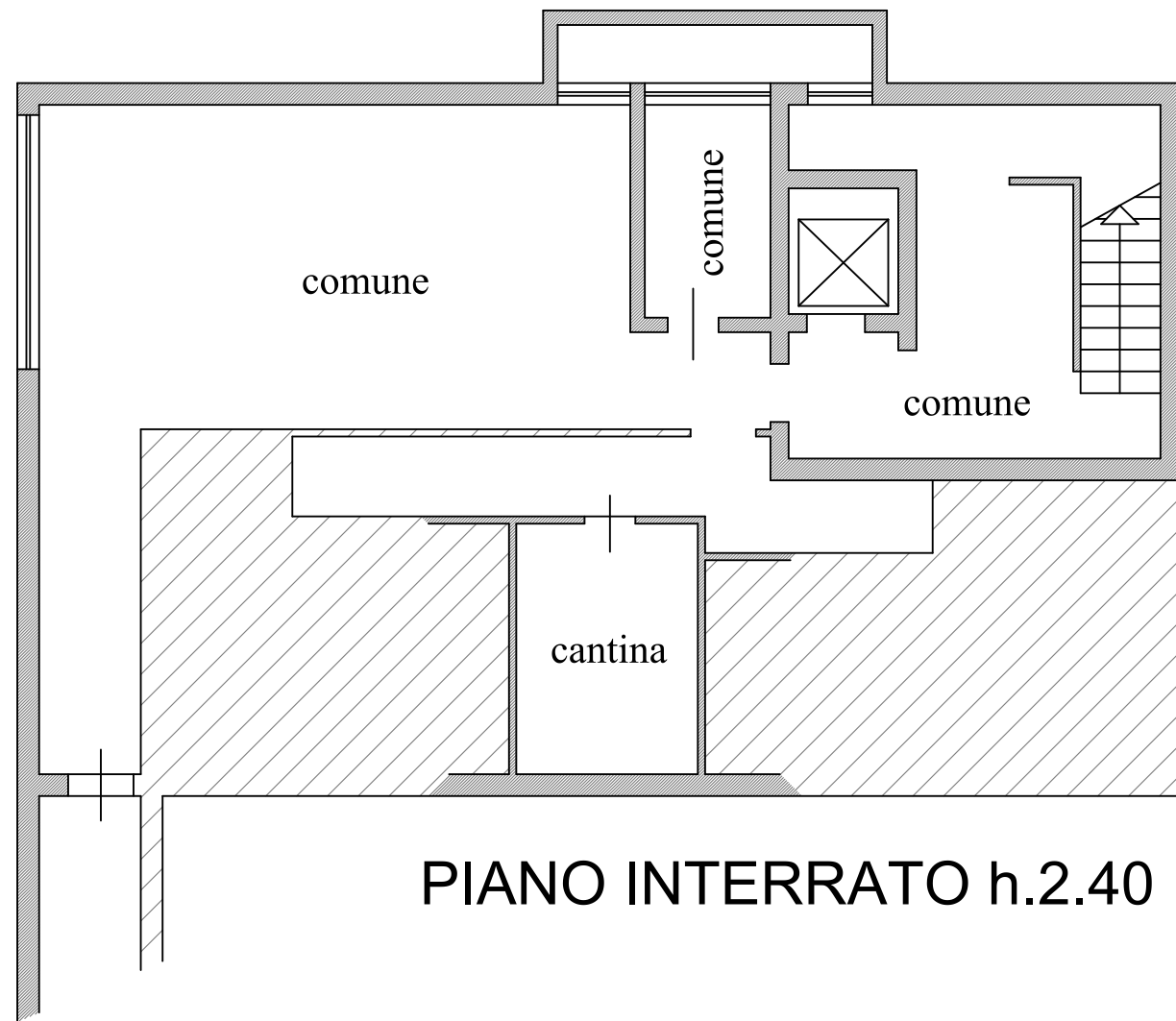
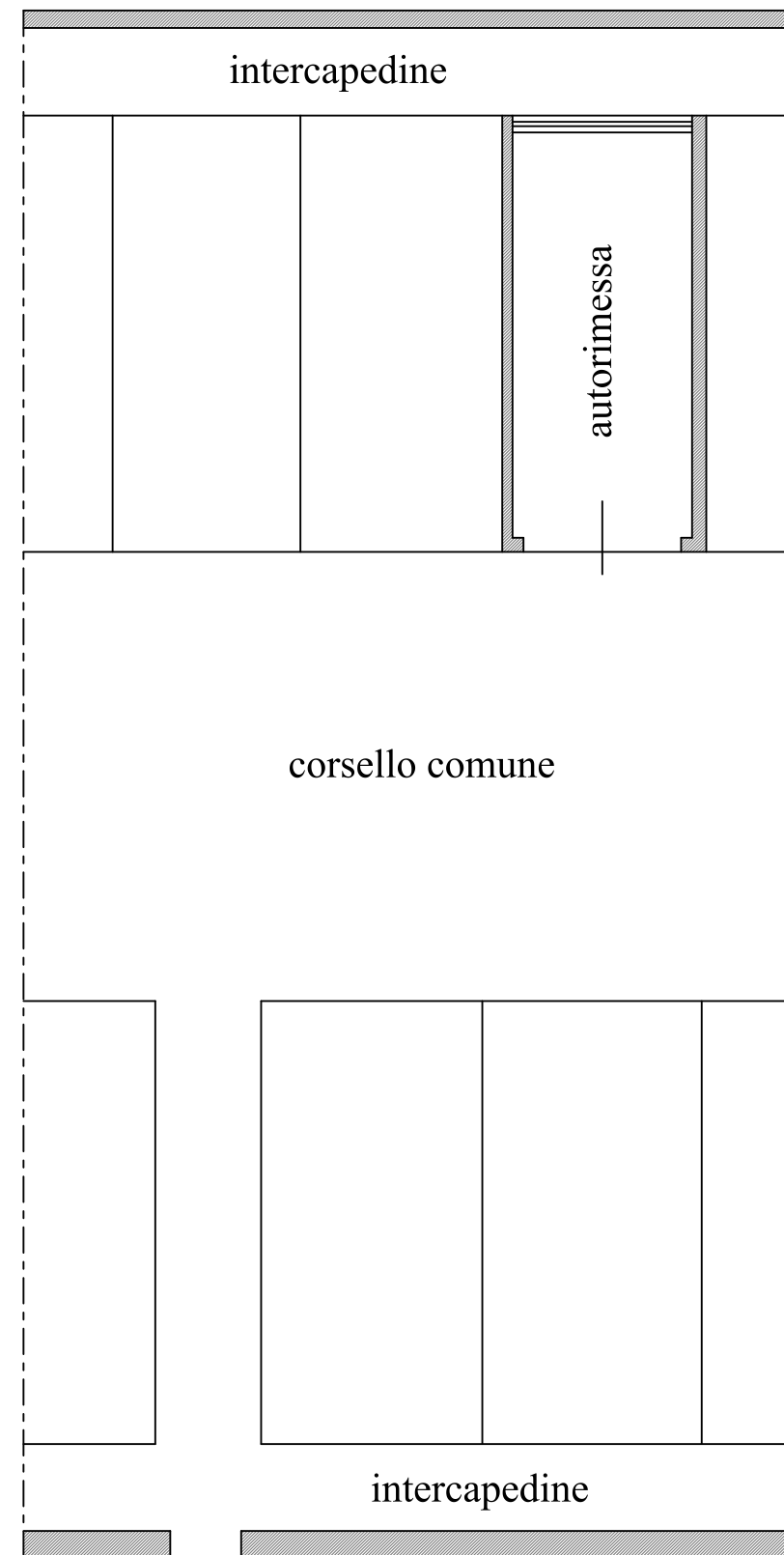


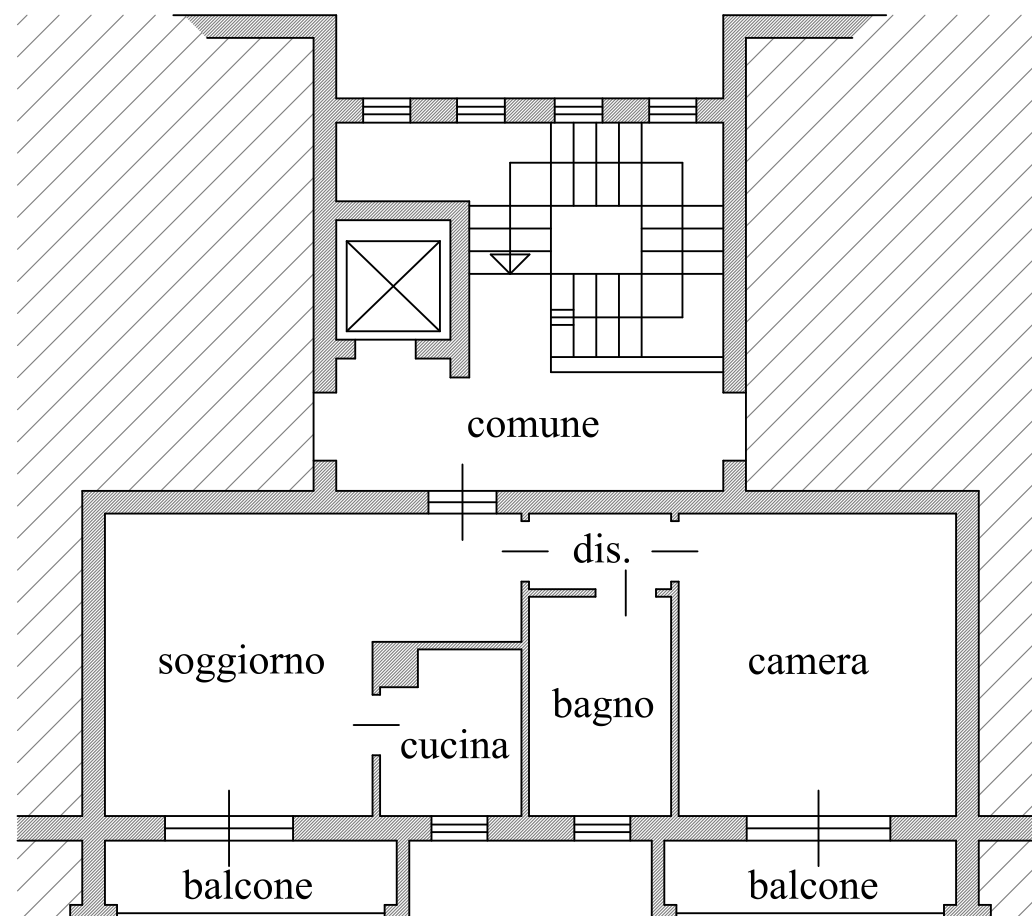
FARA GERA D'ADDA  
 Provincia di Bergamo  
 Via CARLO MOZZI, 2



**PIANO INTERRATO h.2.40**



**PIANO INTERRATO  
 h.2.35**



**PIANO PRIMO - h.2.70**

SUPERFICI LORDE	
Appartamento P.1	51,30 mq.
balconi	8,00 mq.
Cantina	9,00 mq.
Autorimessa	14,00 mq.



ELABORATI GRAFICI  
 - Scala 1:100 -