

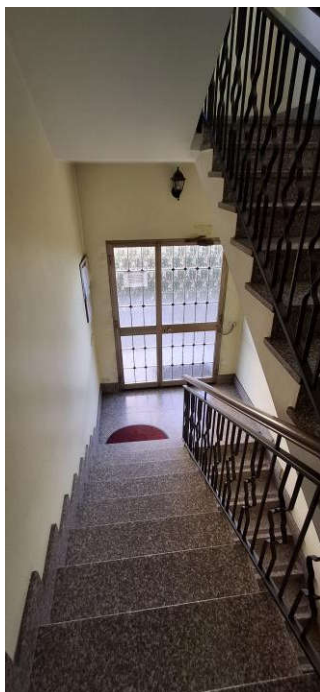
SETTALA (MI) – VIA DELLE INDUSTRIE, 11 –
DATA SOPRALLUOGO 16/03/2026
APPARTAMENTO P. 2 - FG. 3, PART. 67, SUB. 7 + SOLAIO P.3 – FG.3,
PART. 67, SUB 9



VIA DELLE INDUSTRIE 11



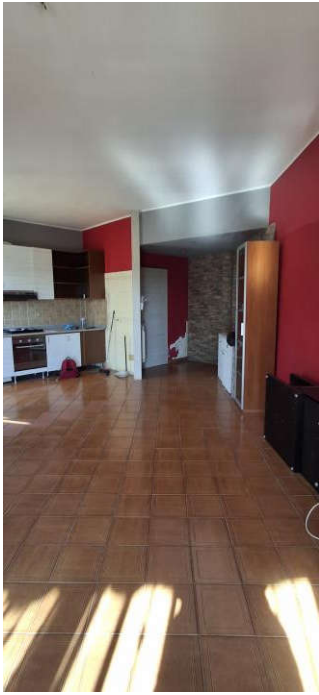
PORTONE INGRESSO



SCALE



INGRESSO SUB 7



INGRESSO/SOGGIORNO



PRANZO/COTTURA



SOGGIORNO/PRANZO



CORRIDOIO



BAGNO 1



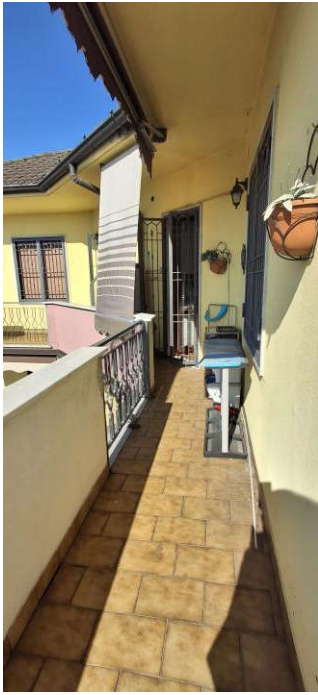
BAGNO 2



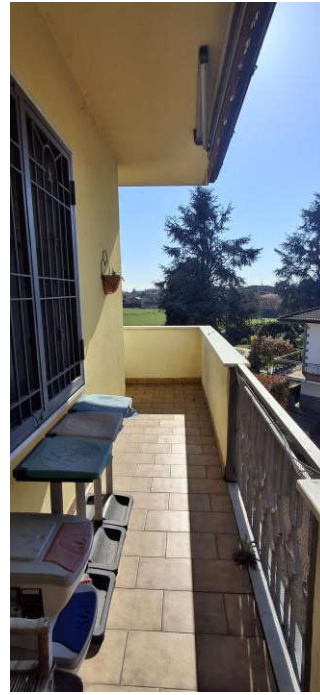
CAMERA 1



CAMERA 2



BALCONE 1



BALCONE 2



SOLAO SUB 9



~~MANIFES~~ SOLAIO



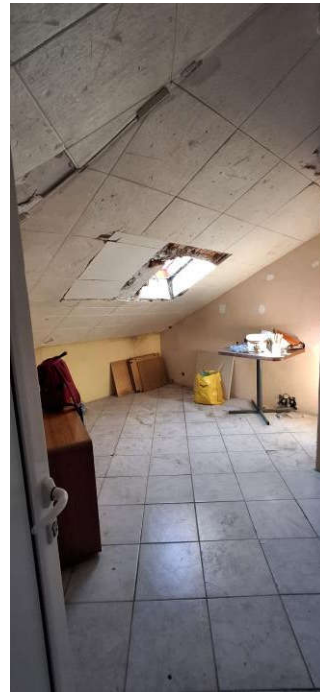
BAGNO ABUSIVO



MURI ABUSIVI



LUCERNARI ABUSIVI



SCALINATA