

## Lotto n. 1

**Diritto venduto:** piena proprietà;

**Qualità- Ubicazione:** abitazione unifamiliare con scoperto esclusivo di pertinenza, sita in Comune di Rubano (PD) con accesso da Via Treviso n. 12



1



2

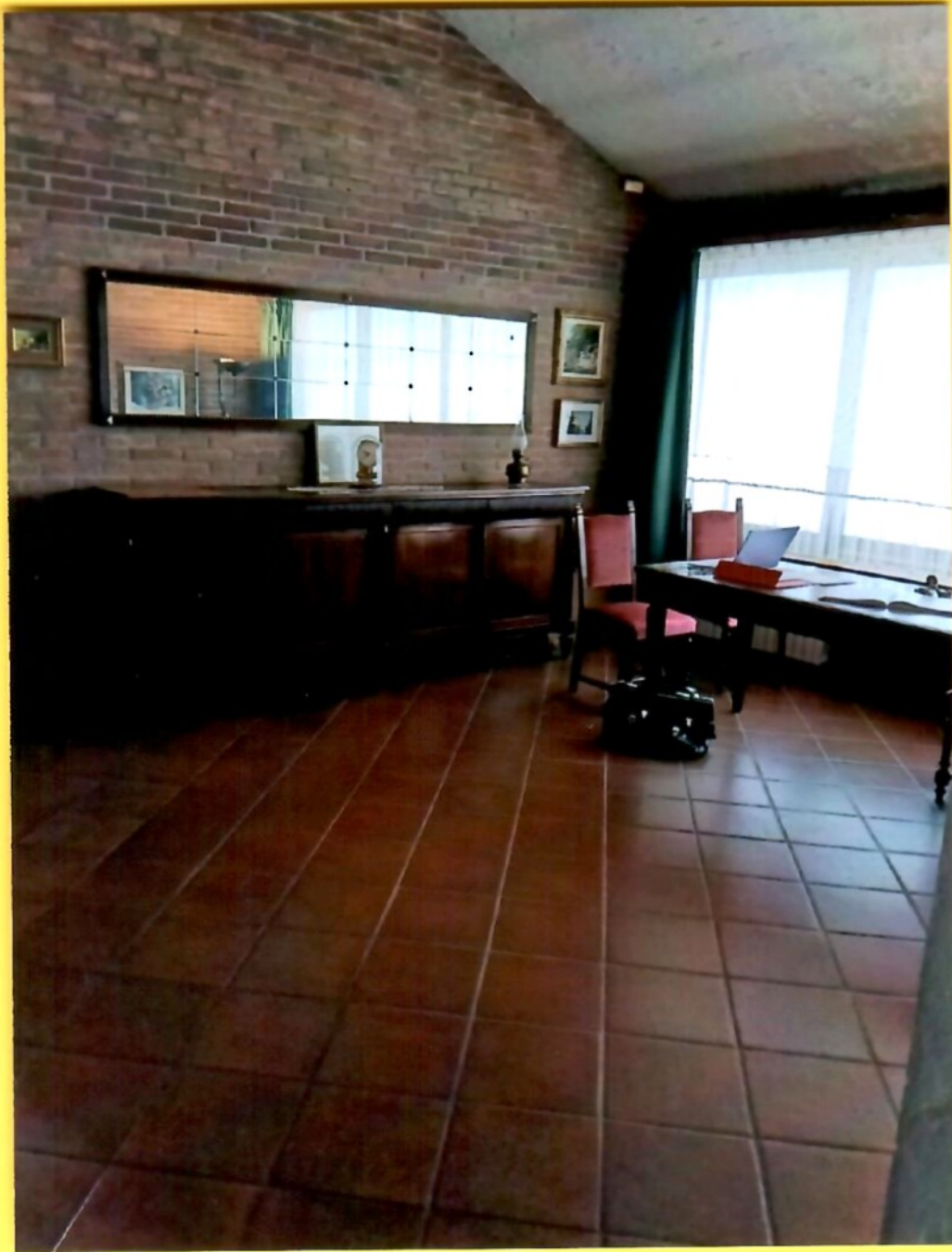
ALL. 1



3



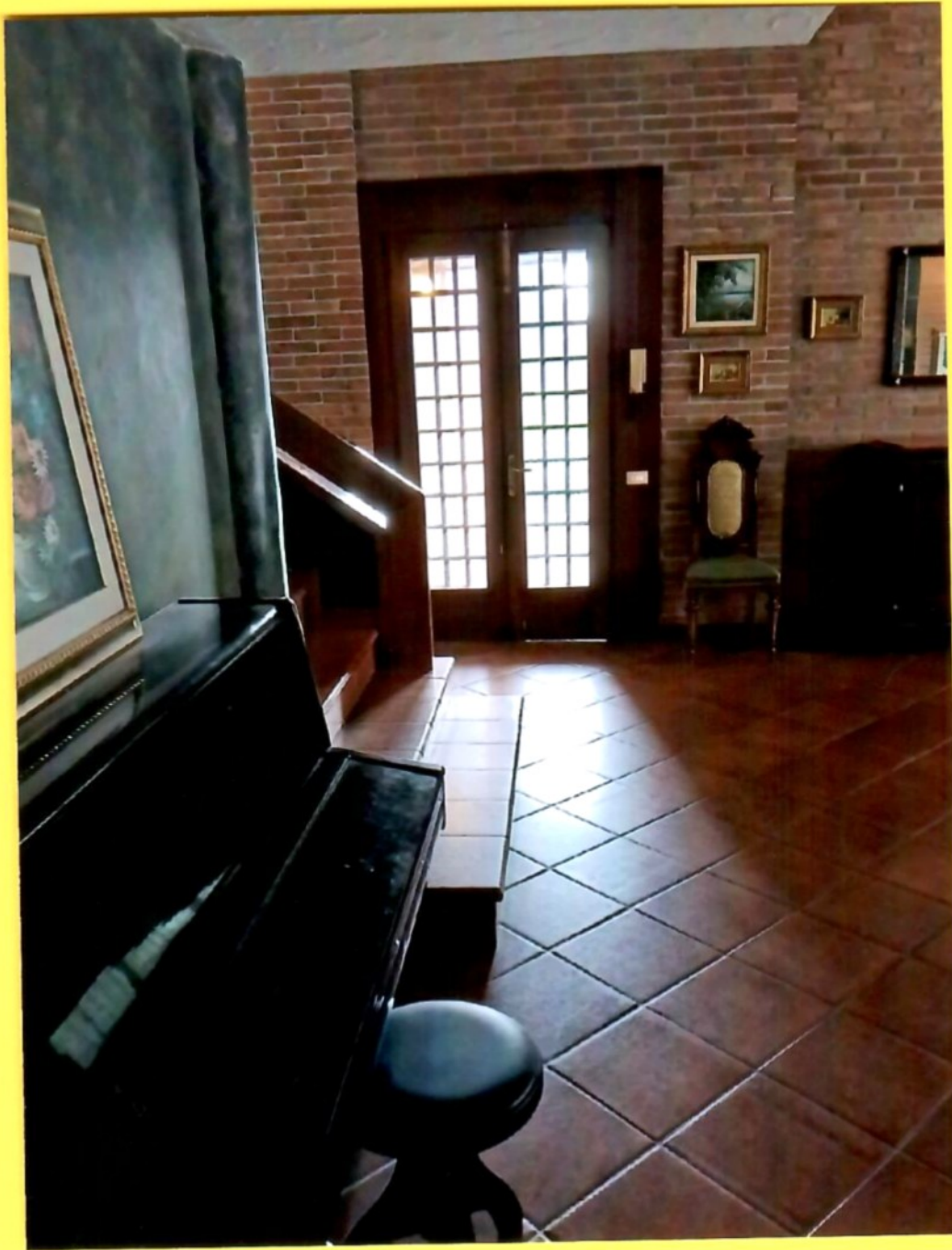
4



5



6



7



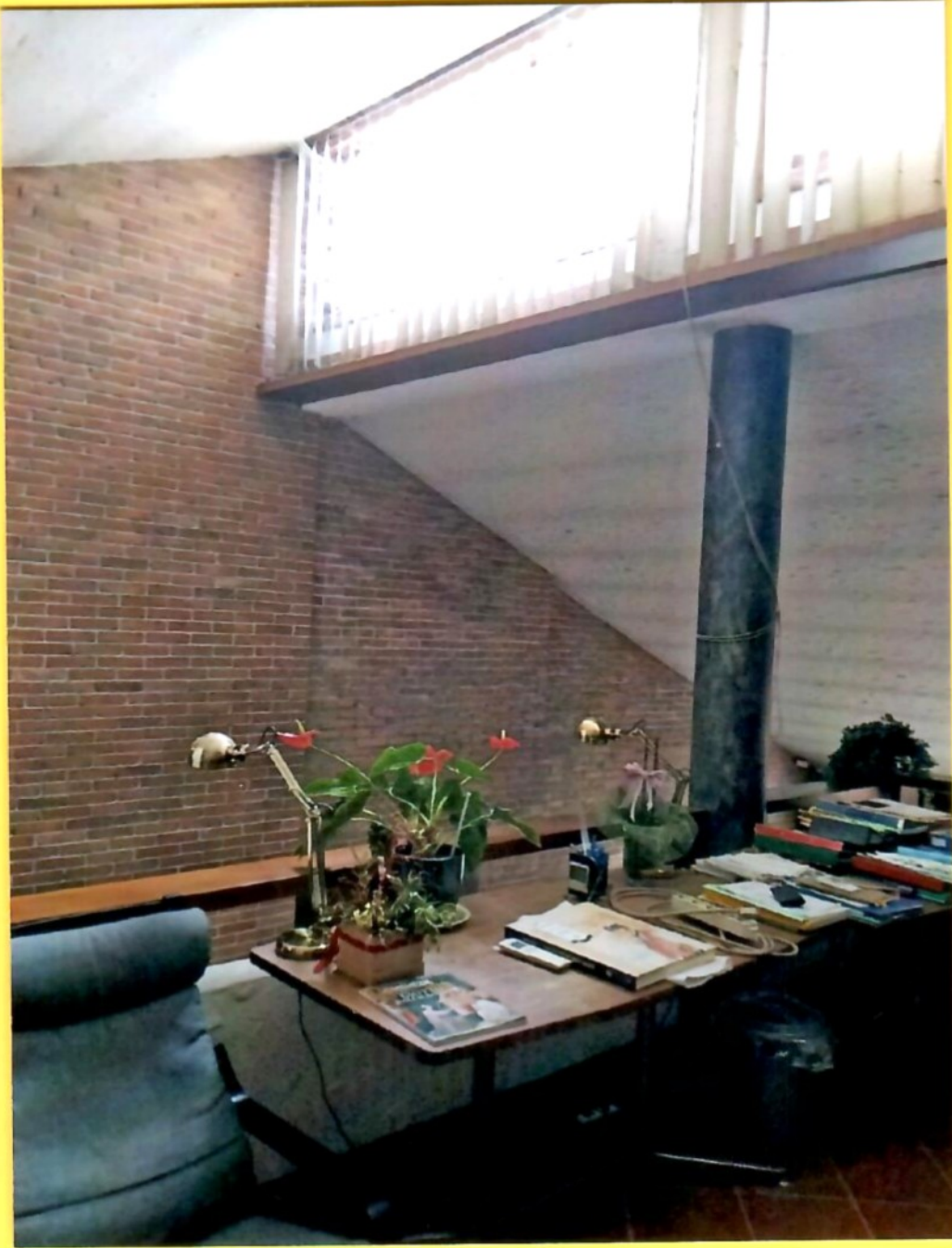
8



9



10



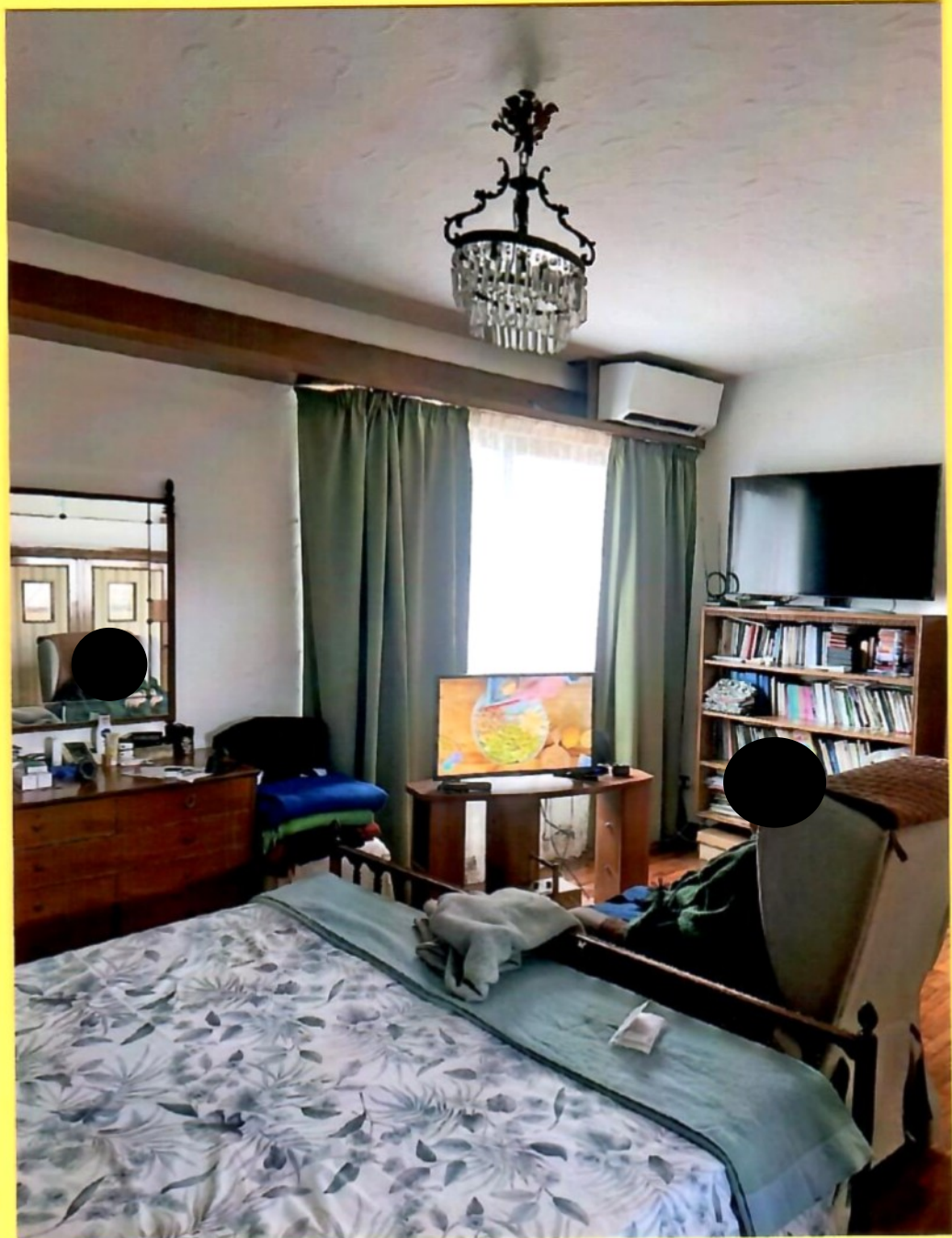
11

12





13



14



15



16



17



18



19



20