

## Rilievo Fotografico Palestro (PV) Vicolo Ossario 1



Vicolo Ossario – immobile affaccio su strada





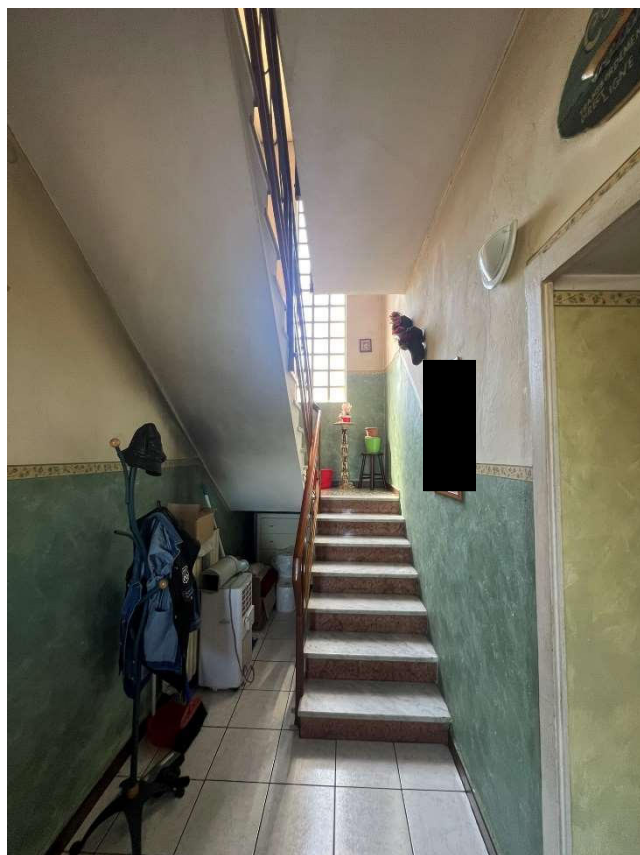
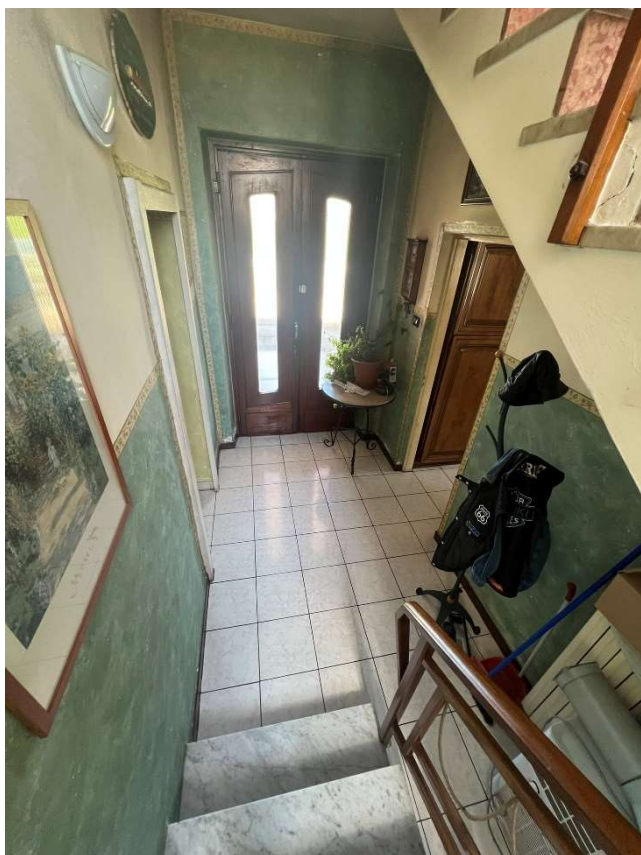
Ingresso immobile





Ingresso immobile – esterno su cortile di proprietà



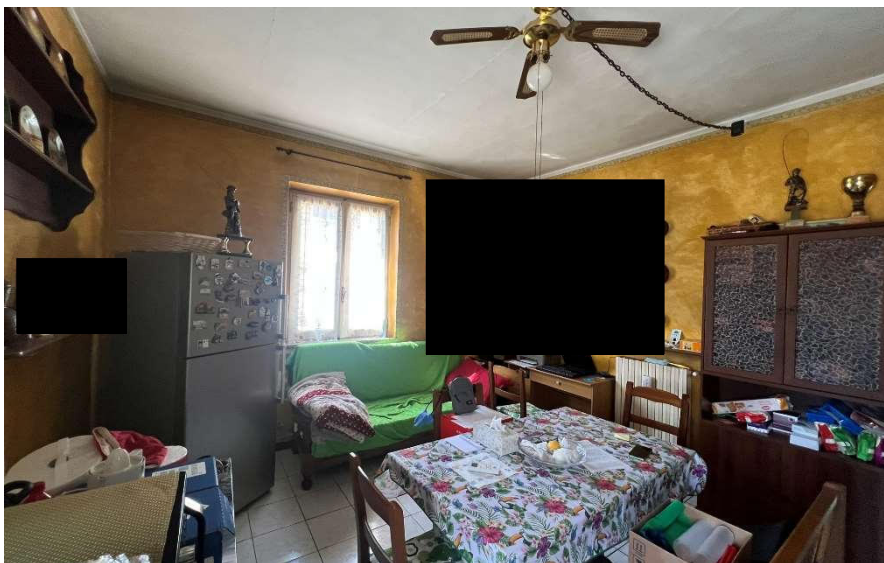
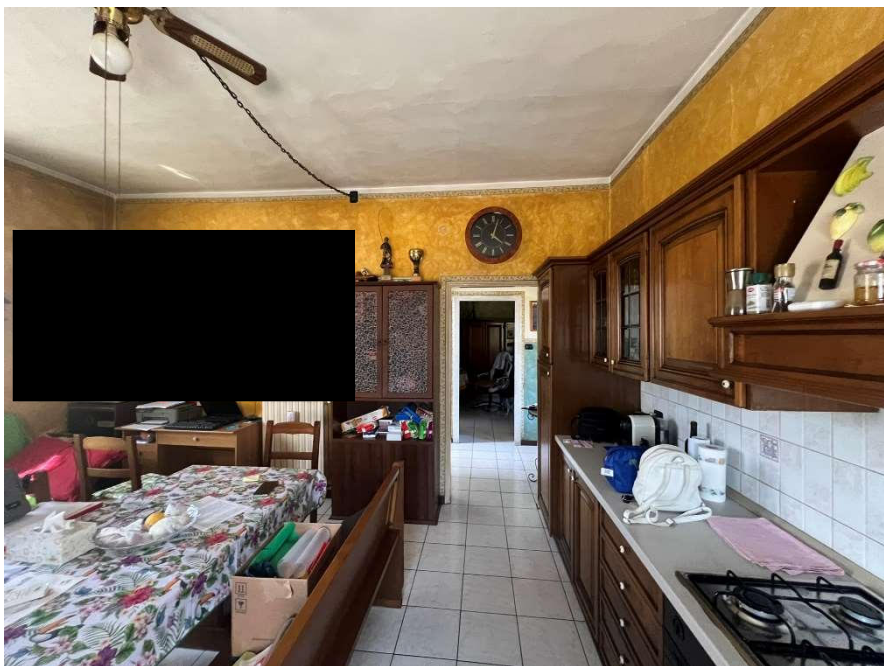


Ingresso – vano scala interno PT



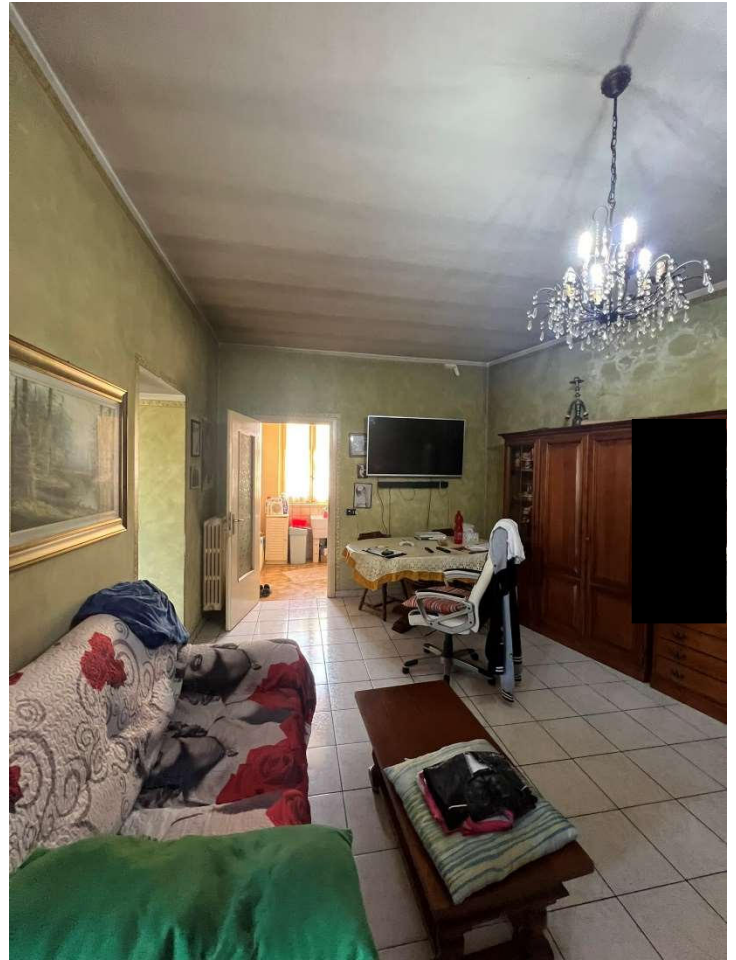
Vano scala interno P1





Cucina abitabile PT





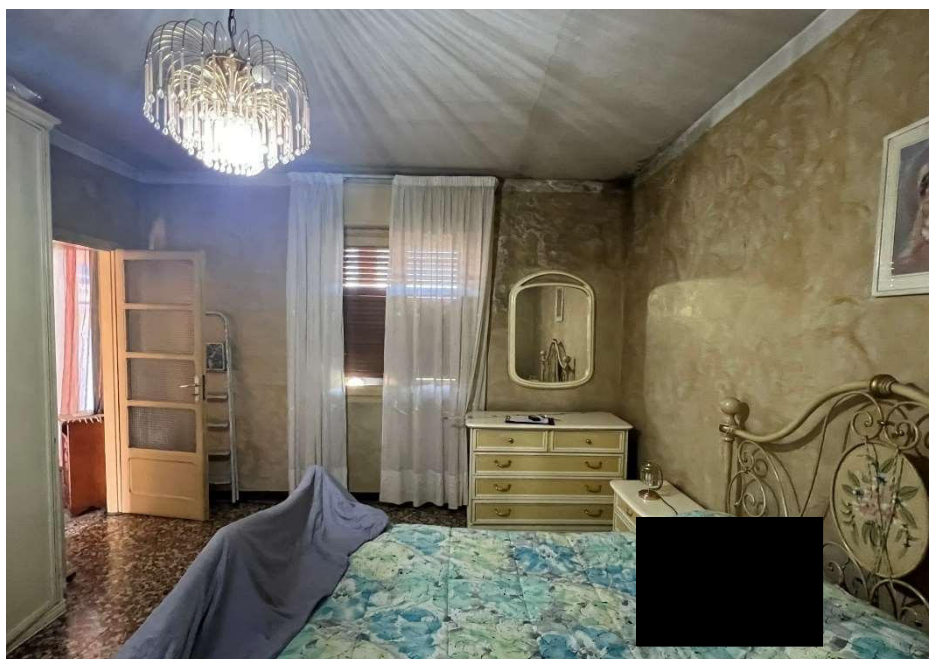
Soggiorno PT





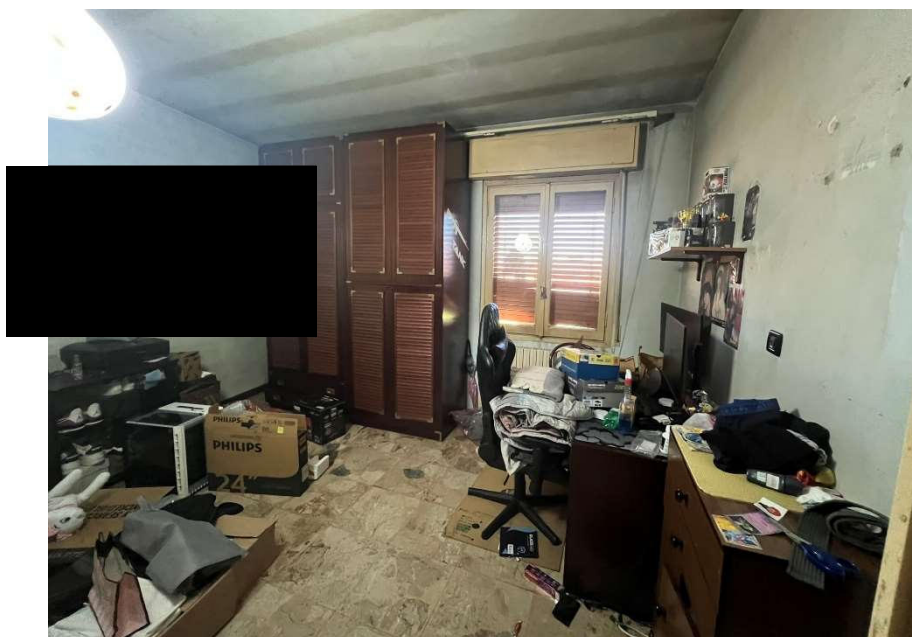
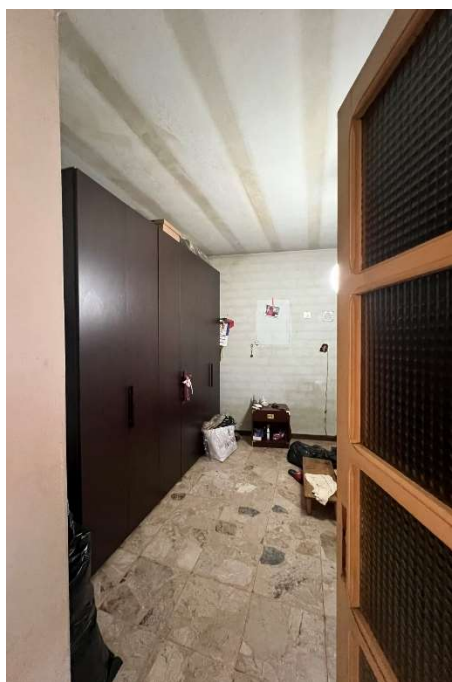
Bagno presente nello SdL, in comunicazione con soggiorno PT





Camera Matrimoniale P1





Altra camera P1





Bagno P1





Loggia P1 – Botola, crepe ed ammaloramenti





Portico esterno/locale deposito nello Stato dei Luoghi





Portico esterno/locale deposito nello Stato dei Luoghi





Cortile di proprietà

