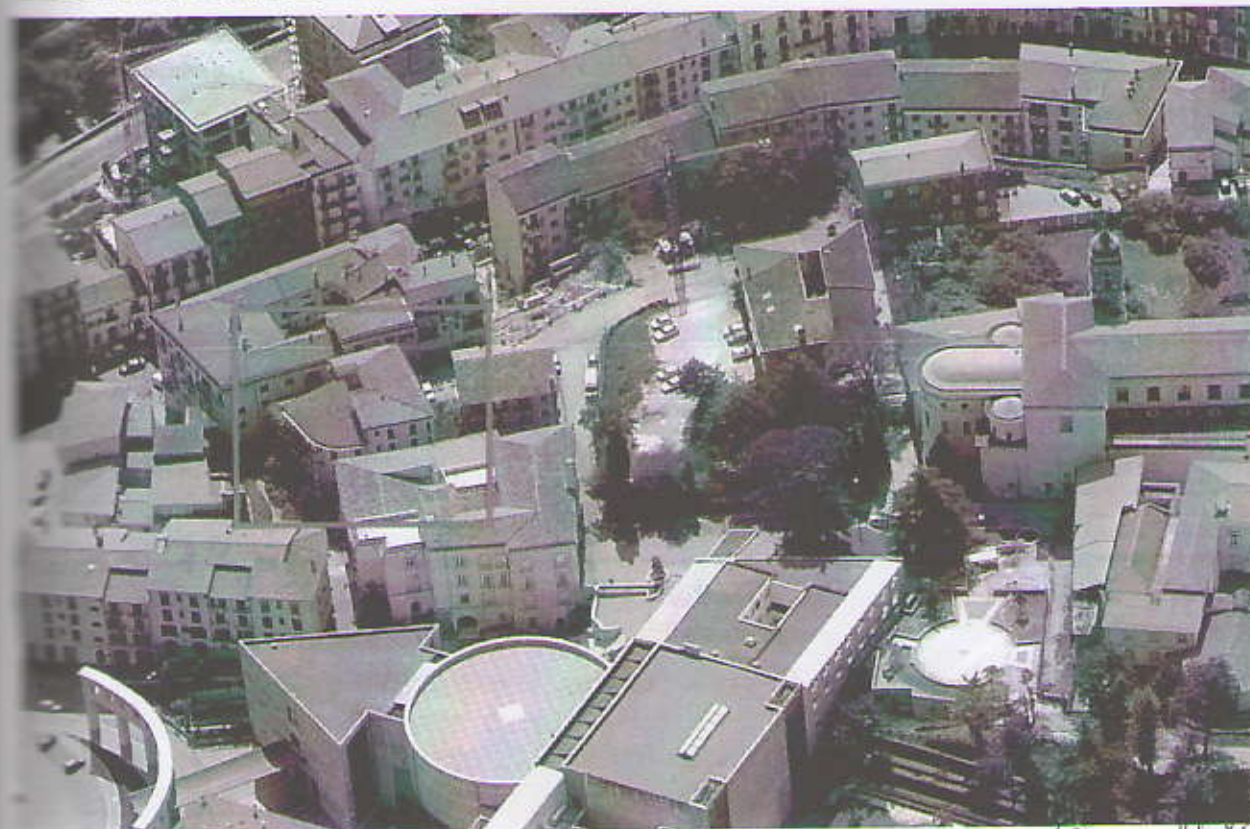
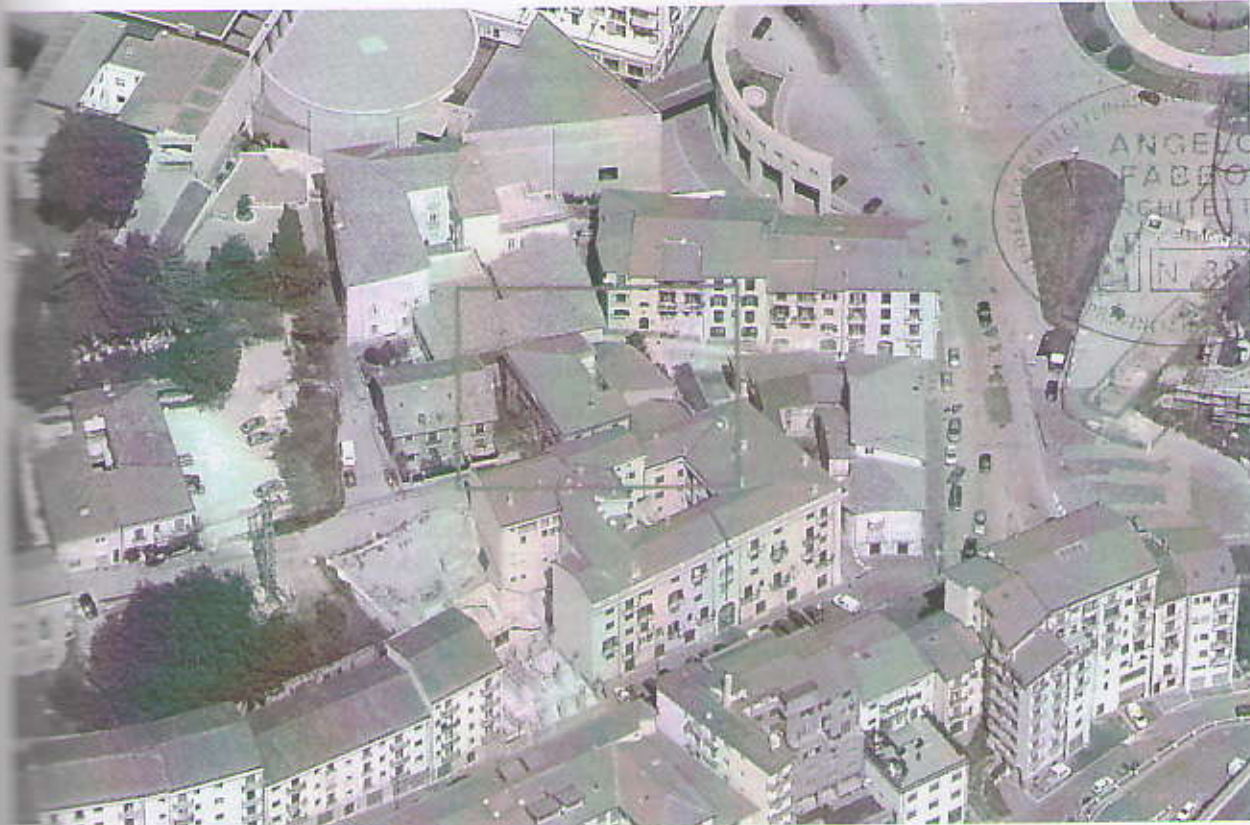




Foto n.1-2 – Riferimento aereo dell'area

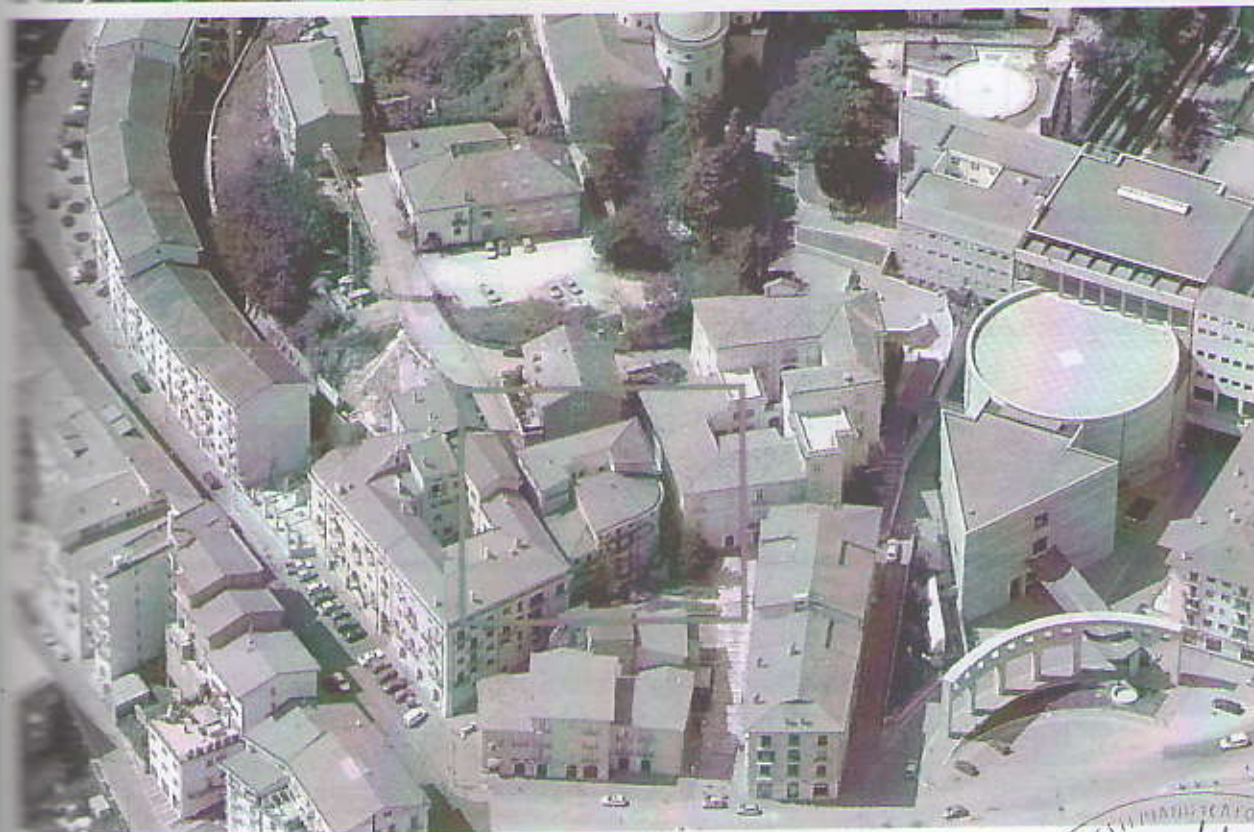
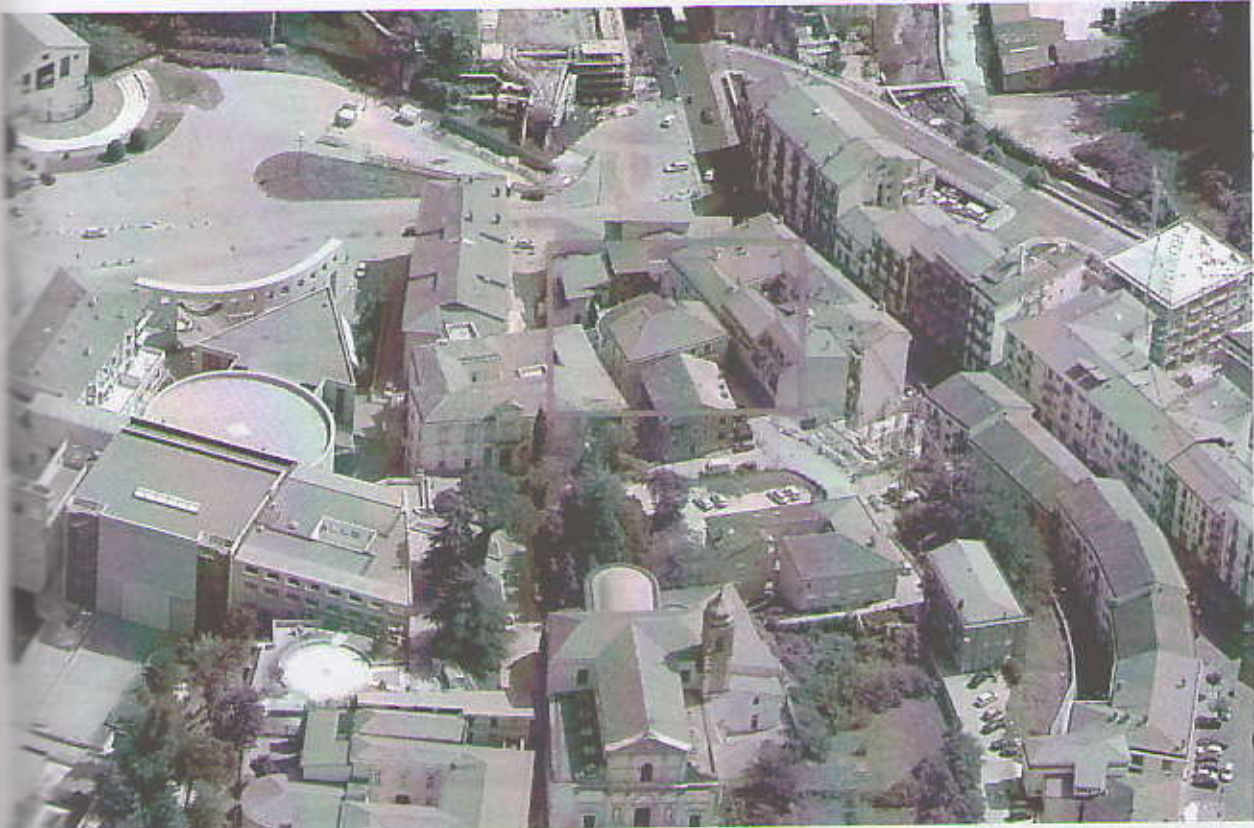




Pag.2

Foto n.3-4 – Vista Nord e Sud dell'edificio





Pag.3

Foto n.5-6 – Vista Est ed Ovest dell'edificio





Pag.4



Foto n.7-8 – Prospetto su Via Seminario e ingresso all'appartamento



Pag.5

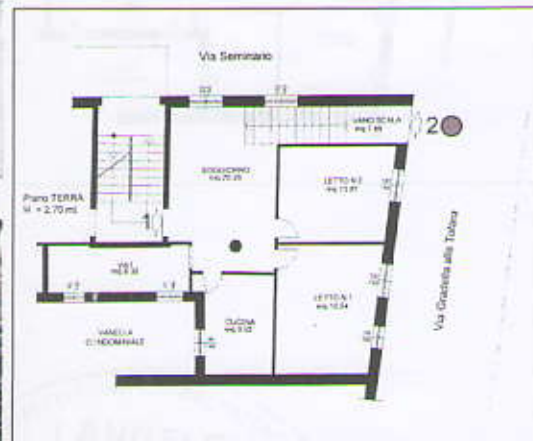
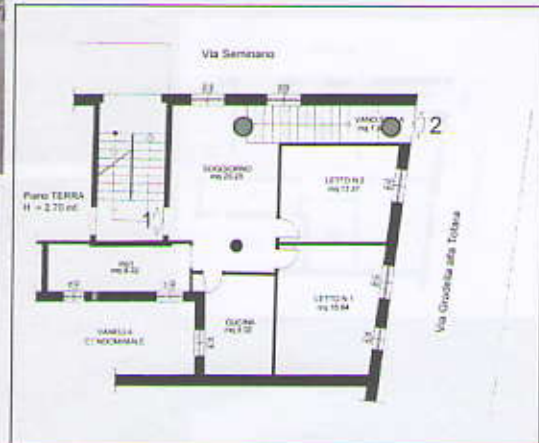


Foto n.9-10 – 2° ingresso da Via Gradella alla Tofara



Pag.6



Foto n.11-12 – Scala interna dal 2° accesso



Pag.7

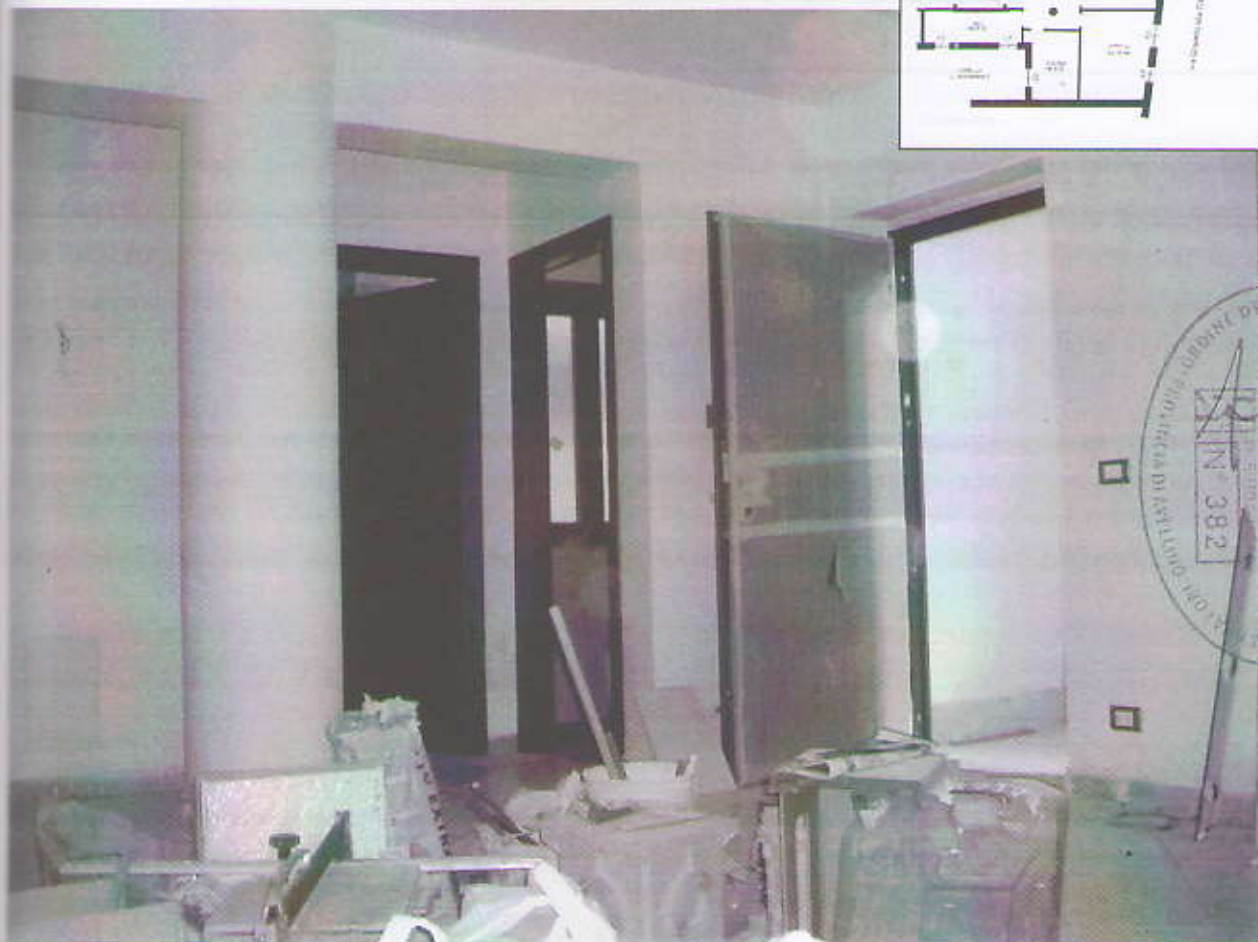


Foto n.13-14 – Ingresso-Soggiorno



Pag.8

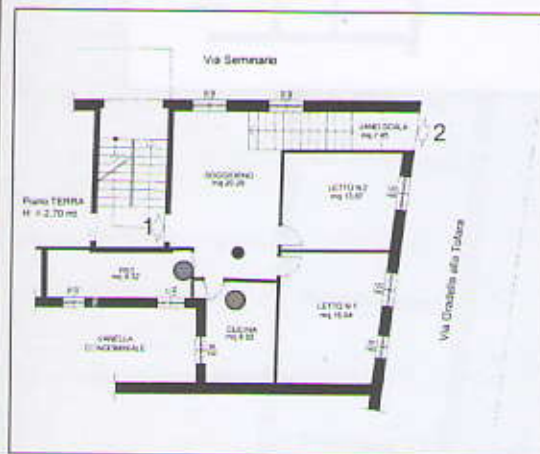
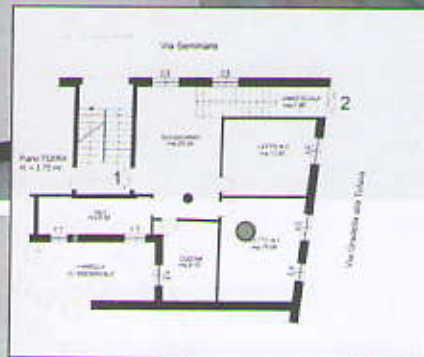


Foto n.15-16 – Cucina e bagno



Pag.9



Foto n.17-18 – Camera da letto

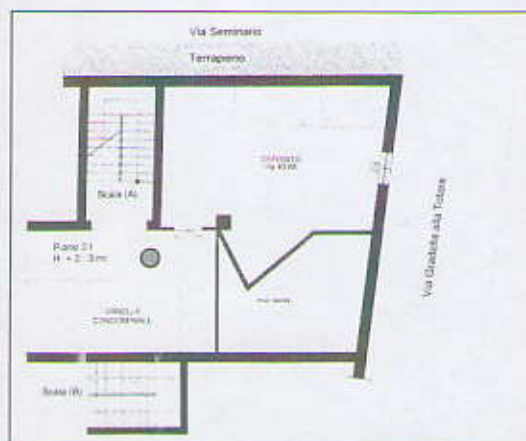
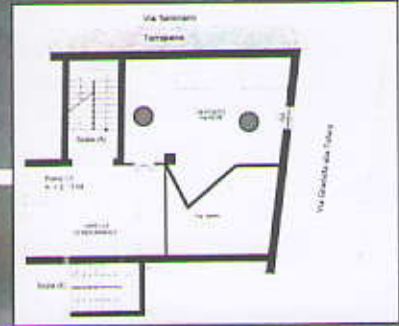


Foto n.19-20 – Piano cantinato ed ingresso al deposito



Pag.11



Foto n.21-22 – Interno deposito