

Tribunale di Latina
Cancelleria delle Esecuzioni Immobiliari

OGGETTO: Esecuzione Immobiliare promossa da

R.G.E. n° 62/06

DESCRIZIONE: ELABORATO FOTOGRAFICO: Complesso immobiliare
via Isonzo km 5+200 loc. "Colle Montanari"

IL C.T.U.
Dott. Ing. Mario Vigliani

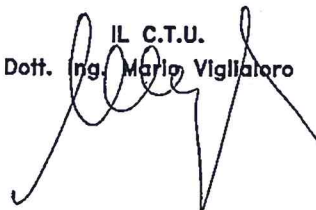


Foto n°1

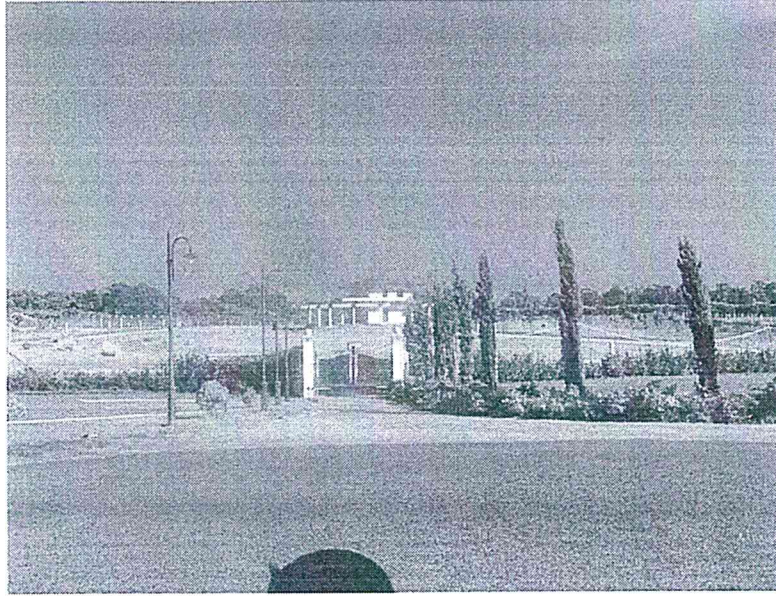


Foto n°2



Foto n°3



Foto n°4

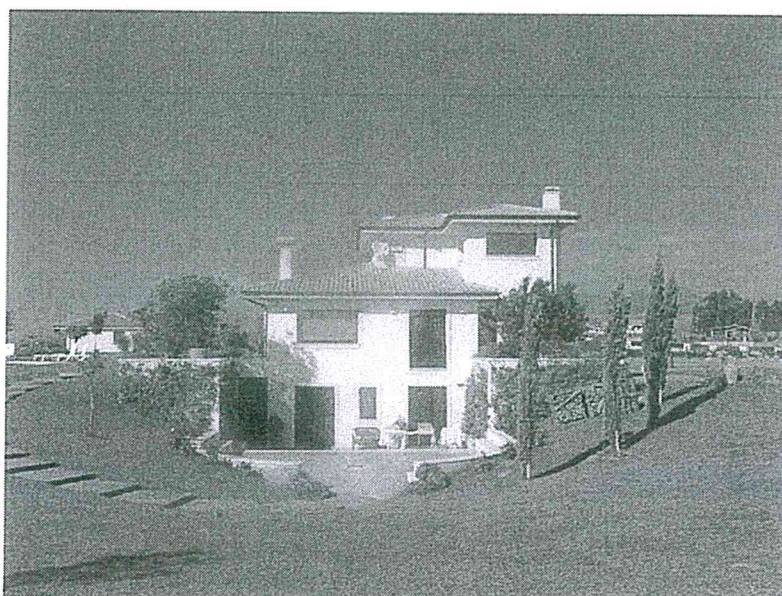


Foto n°5



Foto n°6



VISTE INTERNE – PIANO TERRA

Foto n°7

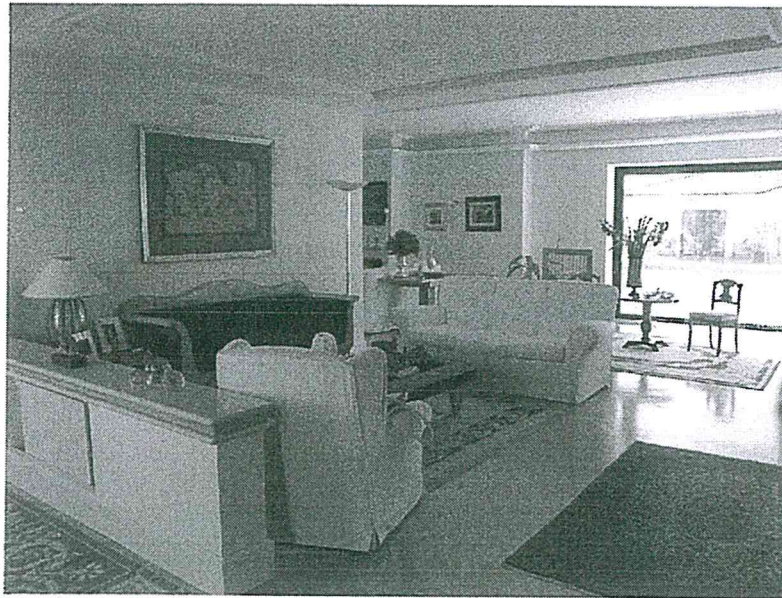


Foto n°8



Foto n°9



Foto n°10



Foto n°11



Foto n°12

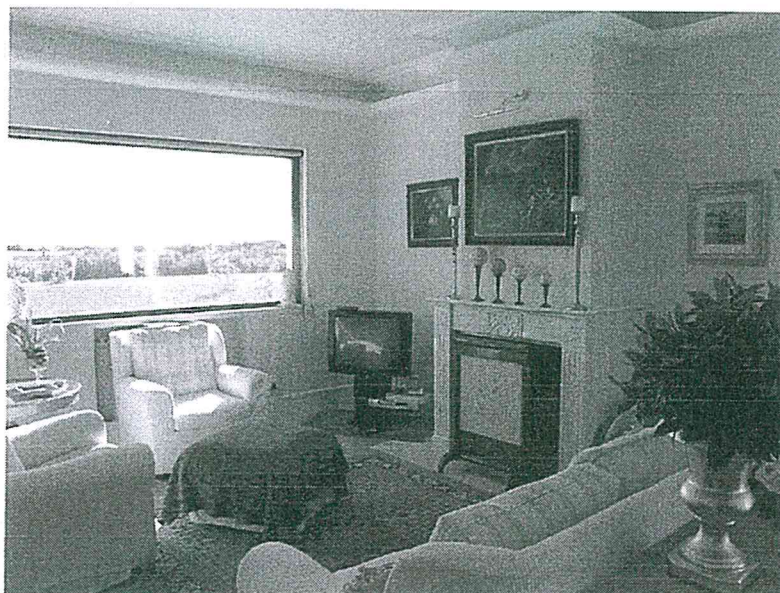


Foto n°13

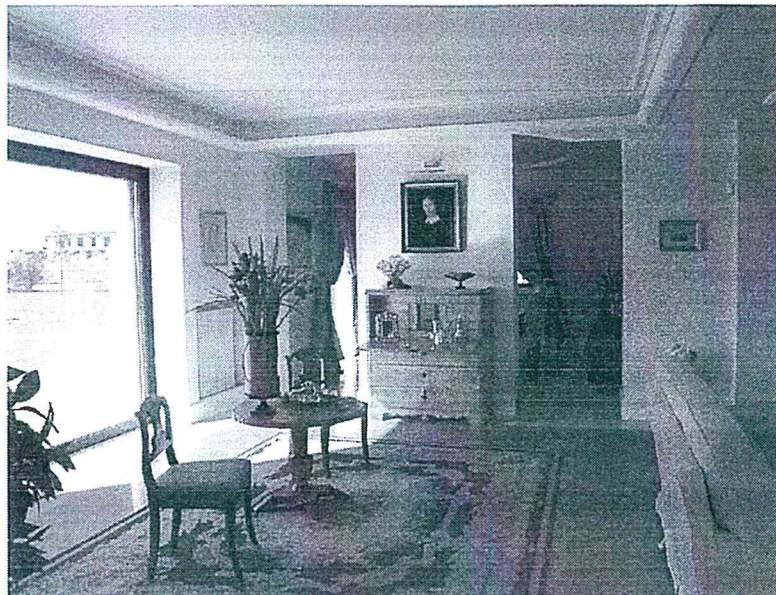


Foto n°14

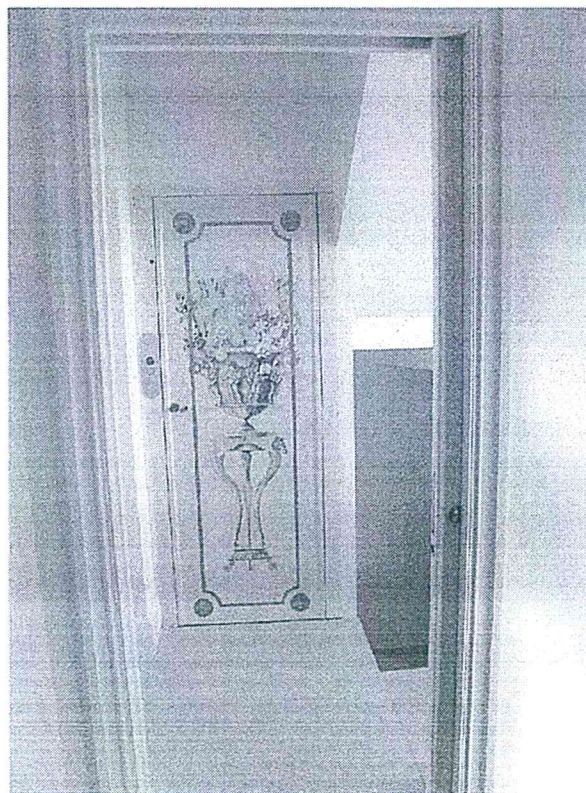


Foto n°15

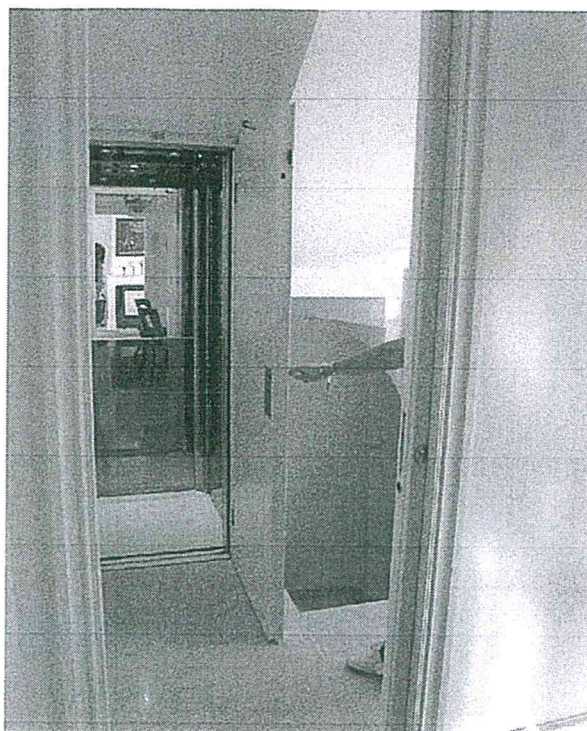


Foto n°16



Foto n°17

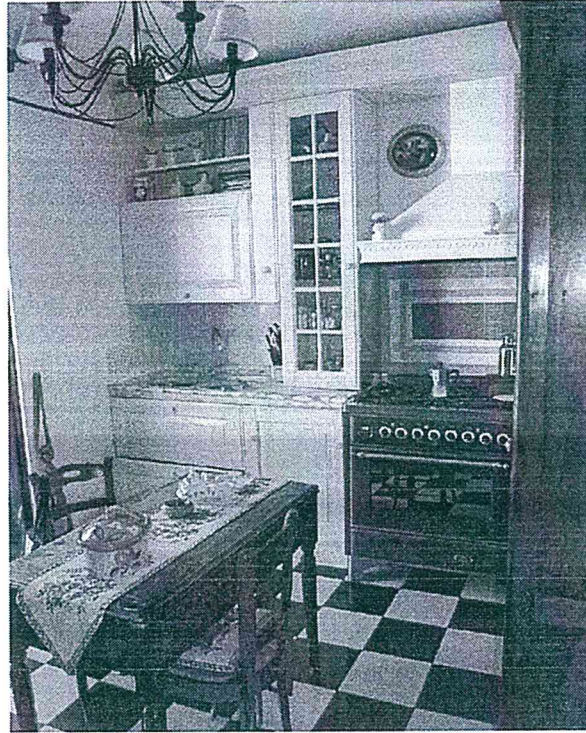


Foto n°18



Foto n°19



VISTE INTERNE - PIANO SEMINTERRATO

Foto n°20

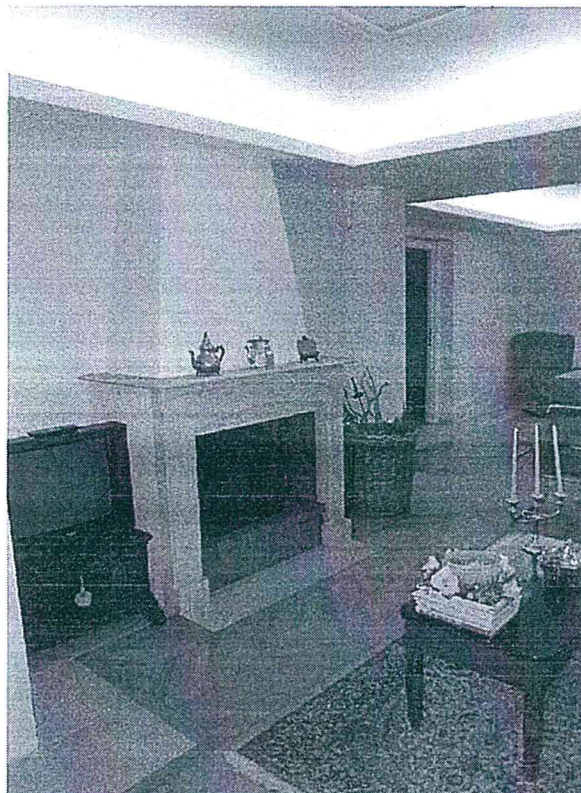


Foto n°21

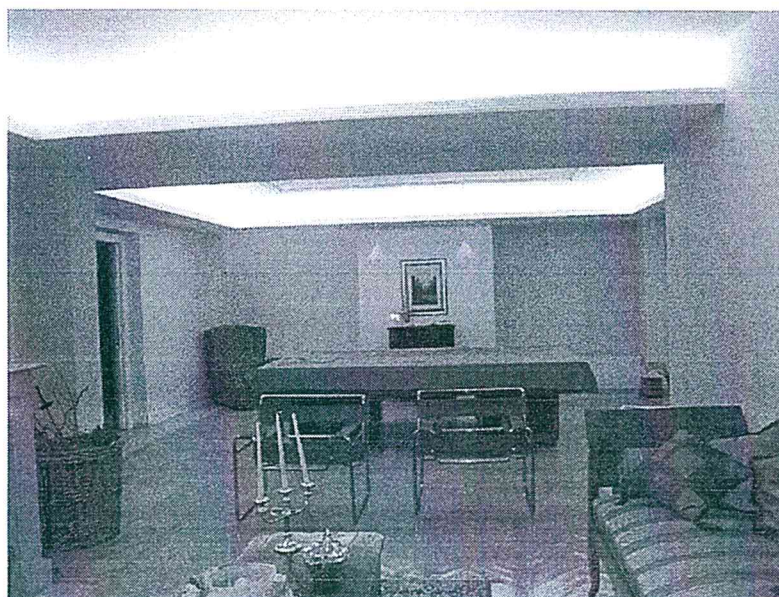


Foto n°22



Foto n°23



Foto n°24

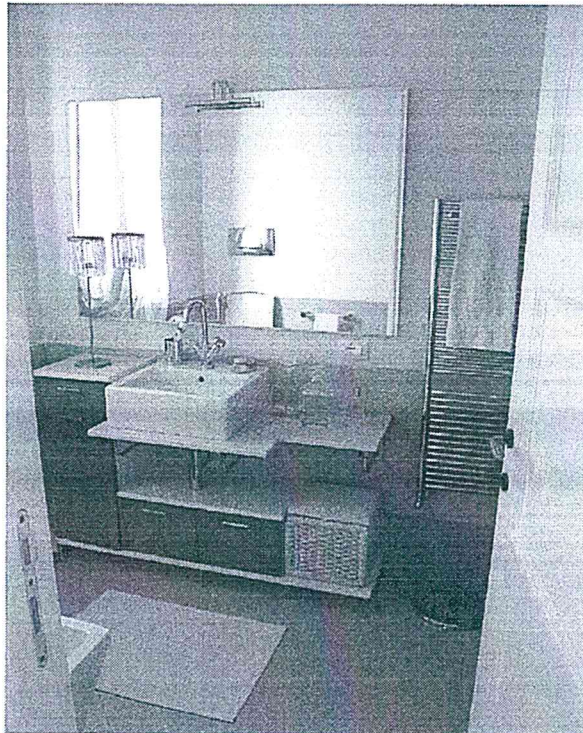


Foto n°25



Foto n°26

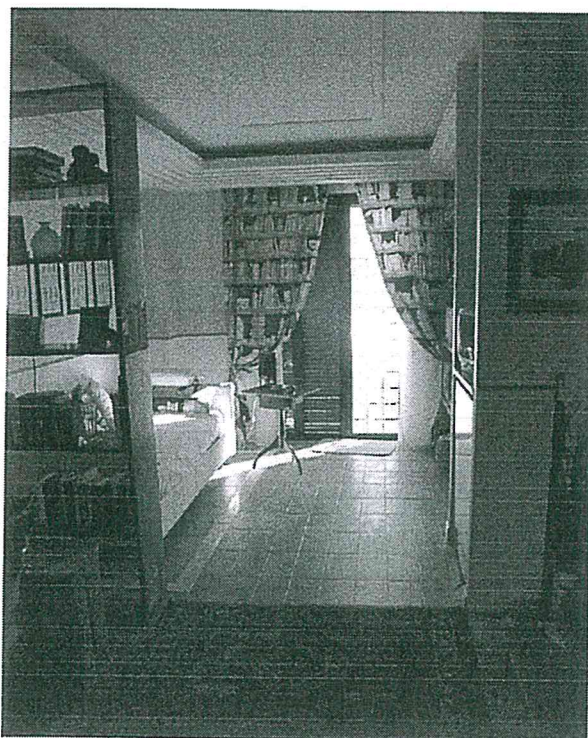


Foto n°27

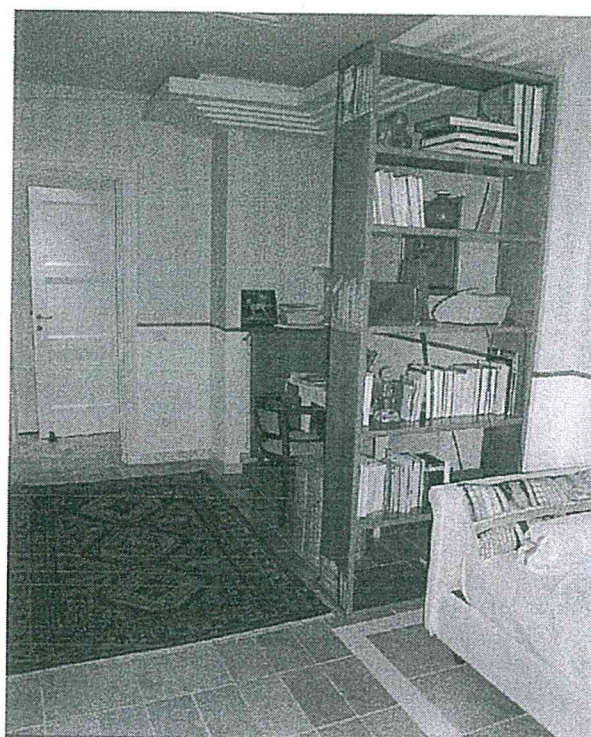


Foto n°28



Foto n°29

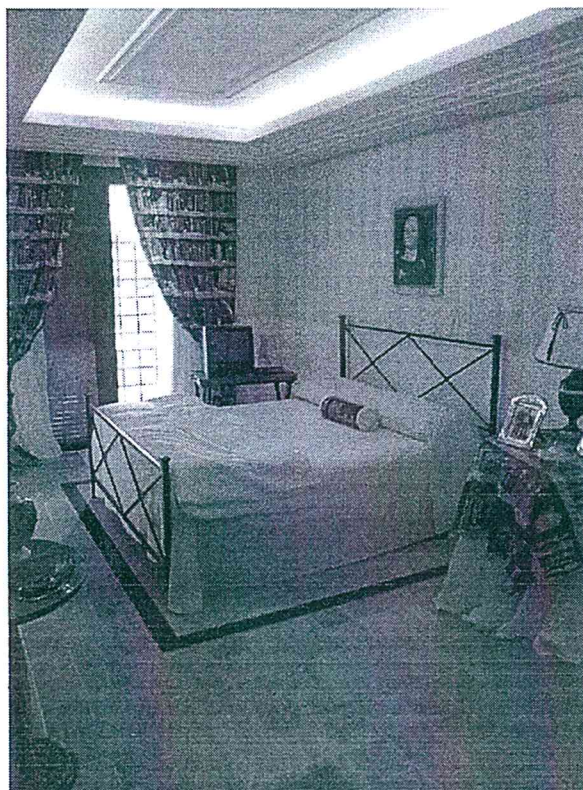


Foto n°30

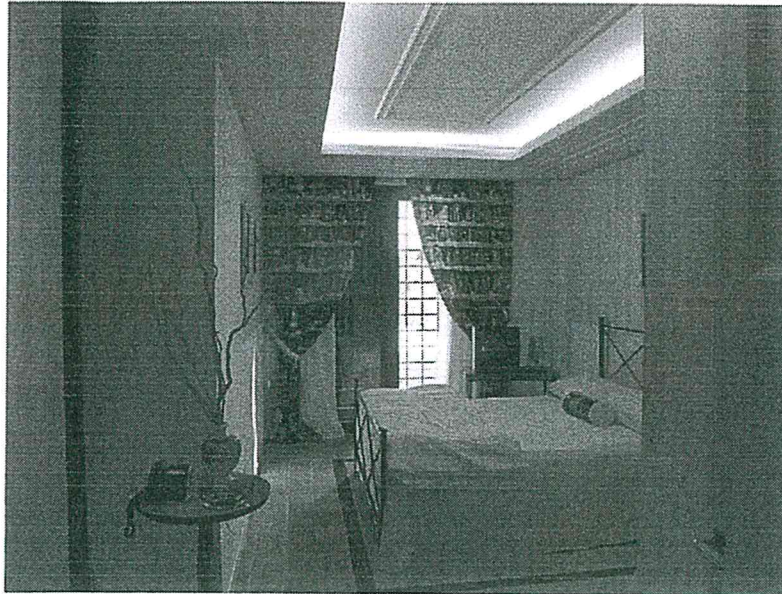


Foto n°31

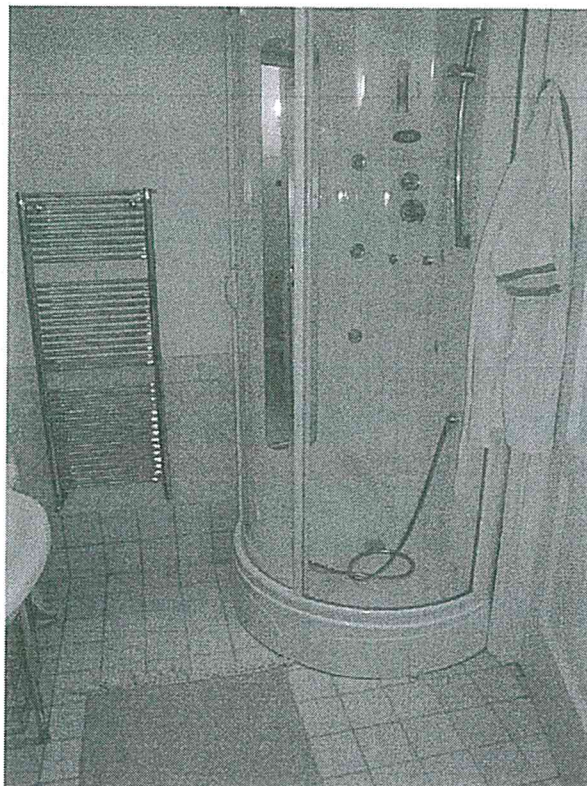


Foto n°32



Foto n°33



Foto n°34



Foto n°35



Foto n°36



Foto n°37



Foto n°38

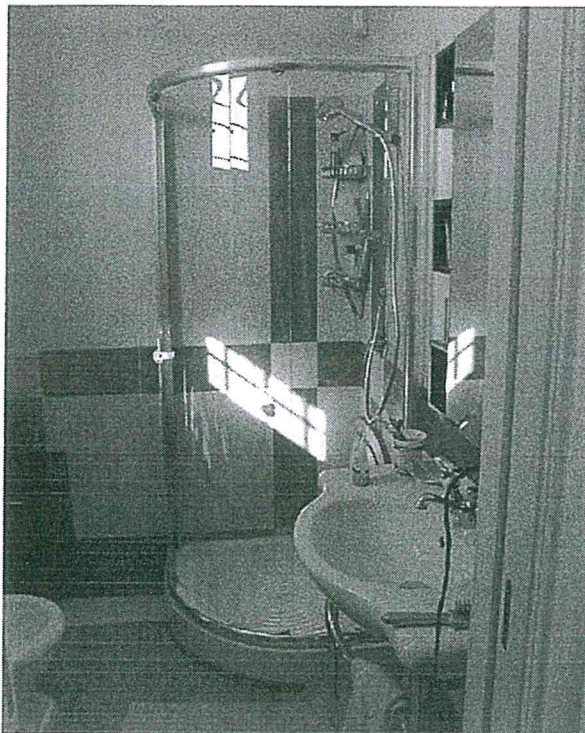


Foto n°39



Foto n°40



VISTE ESTERNE

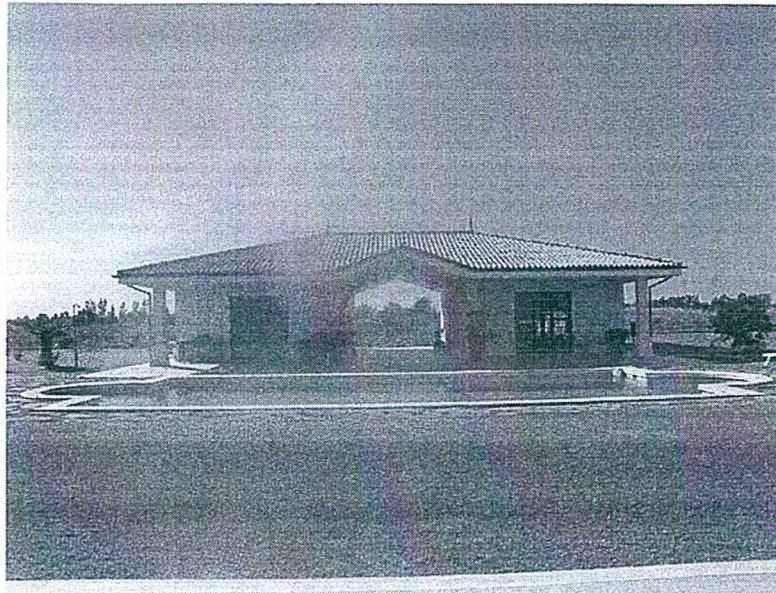
Foto n°41



Foto n°42



Foto n°43



VISTE ISTERNE

Foto n°44

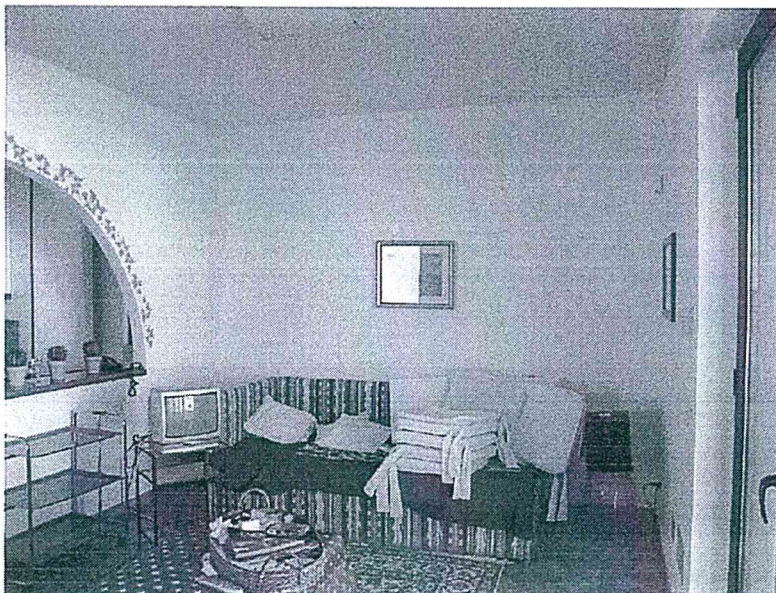


Foto n°45

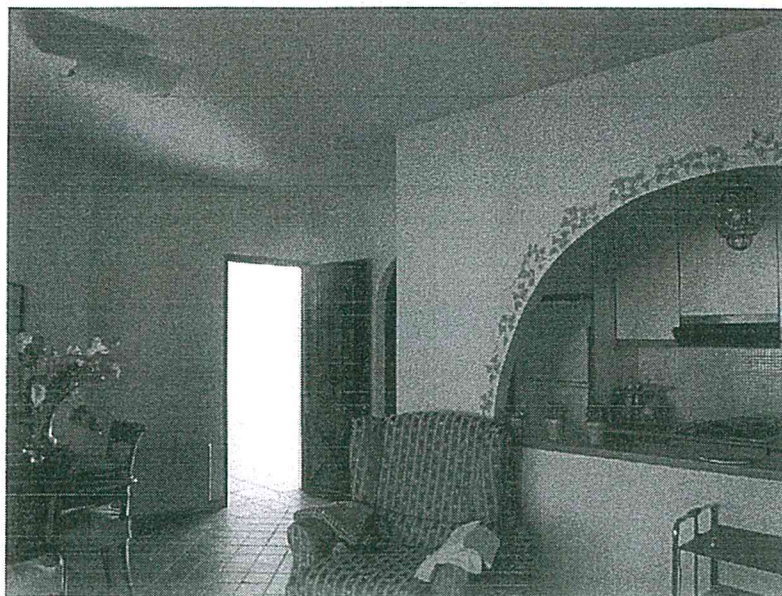


Foto n°46



Foto n°47



Foto n°48

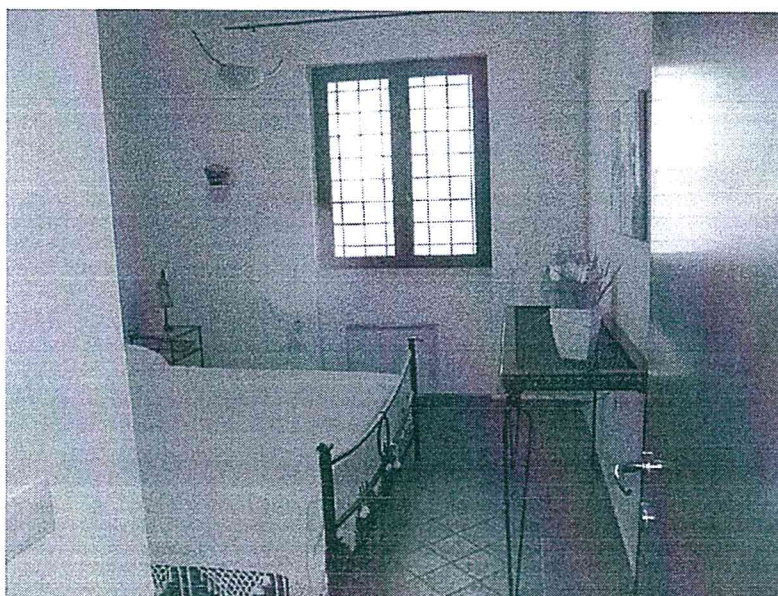


Foto n°49



Foto n°50

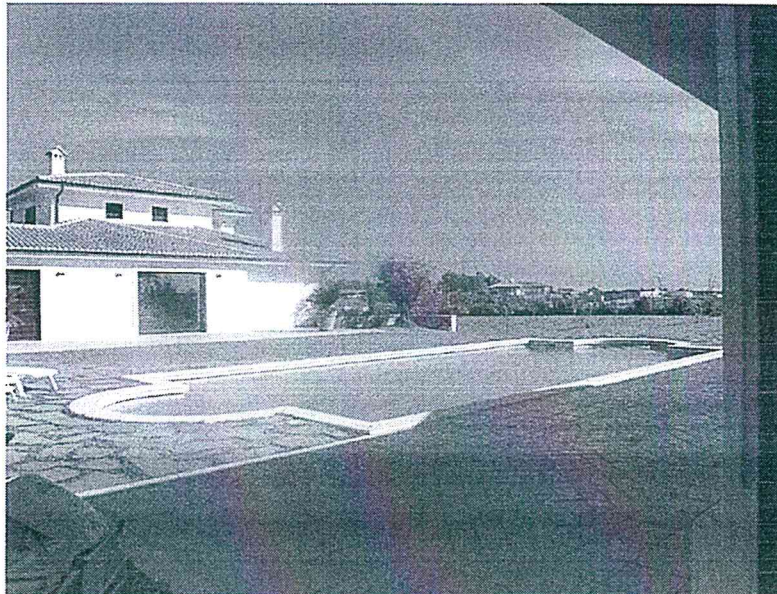


Foto n°51



Foto n°52



Foto n°53



Foto n°54

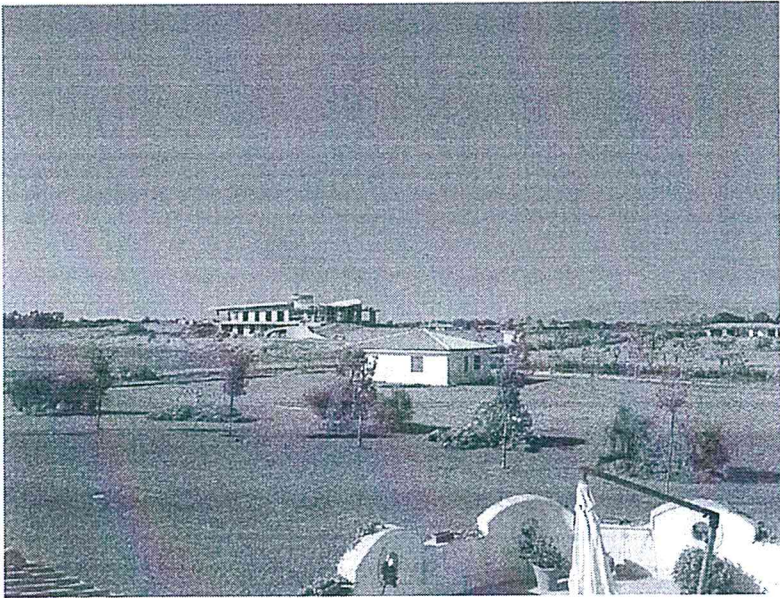


Foto n°55

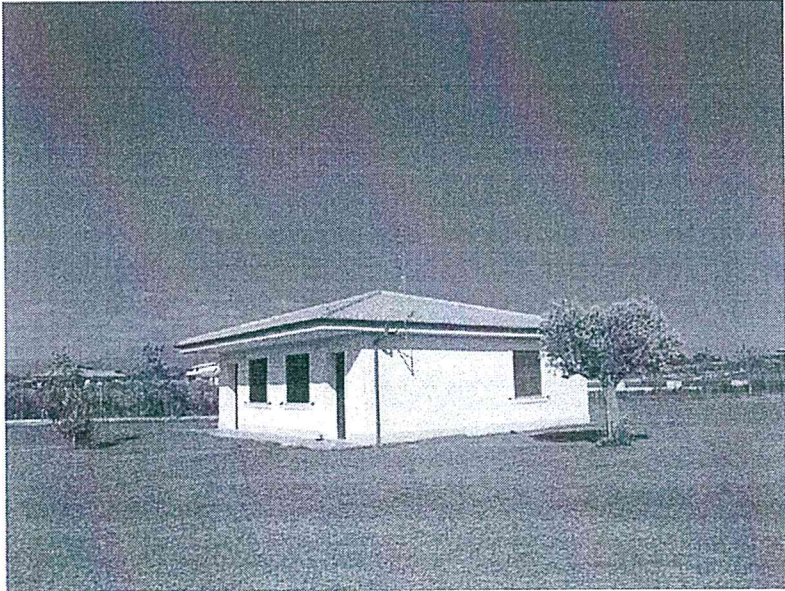


Foto n°56



Foto n°57

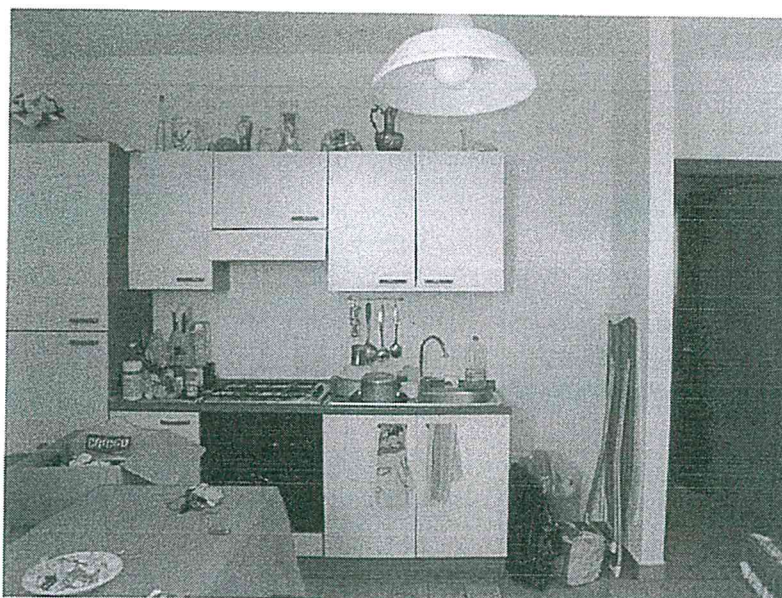


Foto n°58

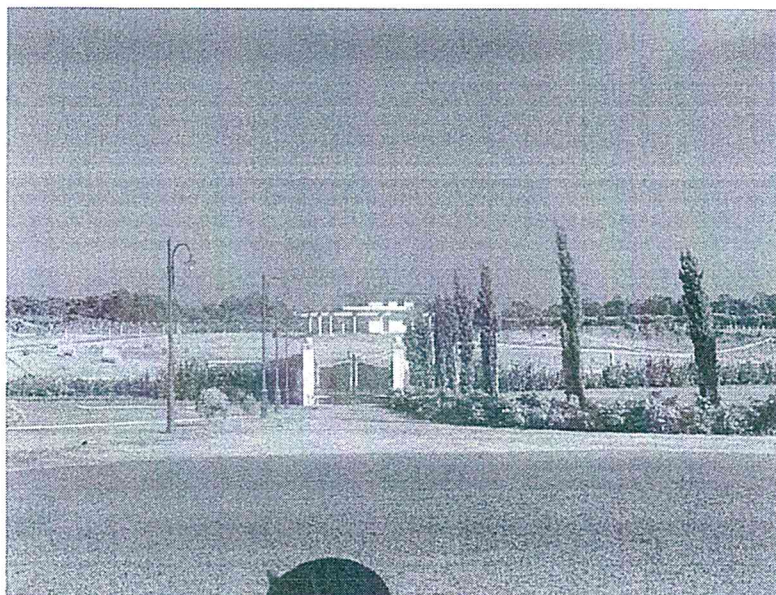


Foto n°59

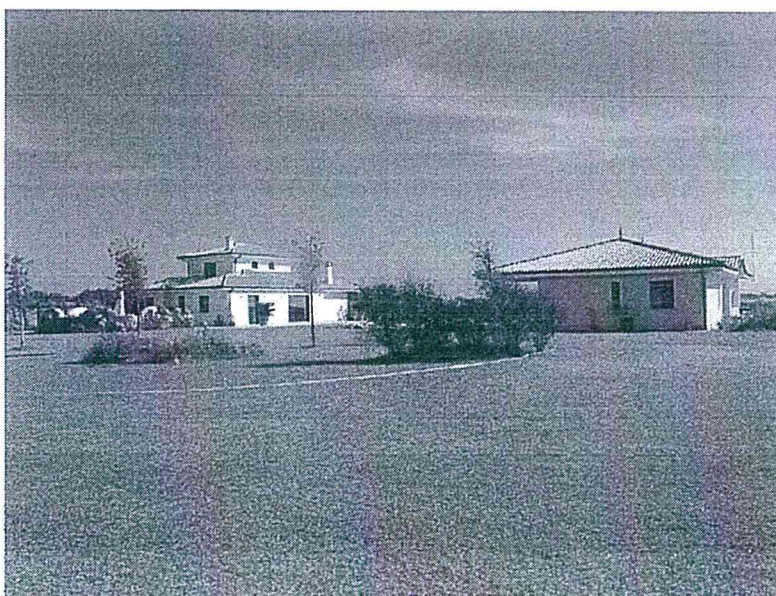


Foto n°60



Foto n°61

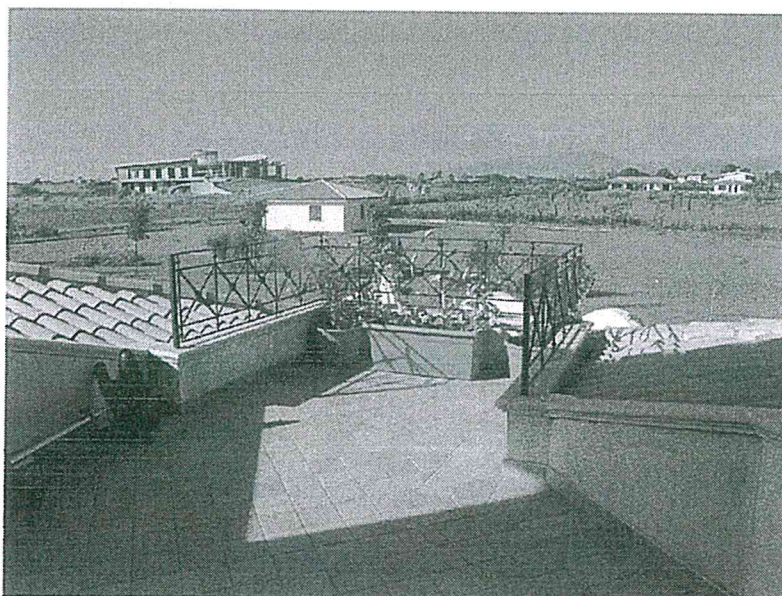


Foto n°62



Foto n°63

