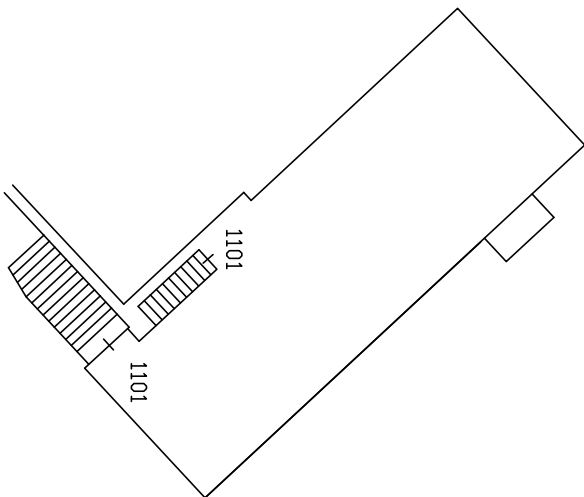


SCHEMA COMPENDIO IMMOBILIARE

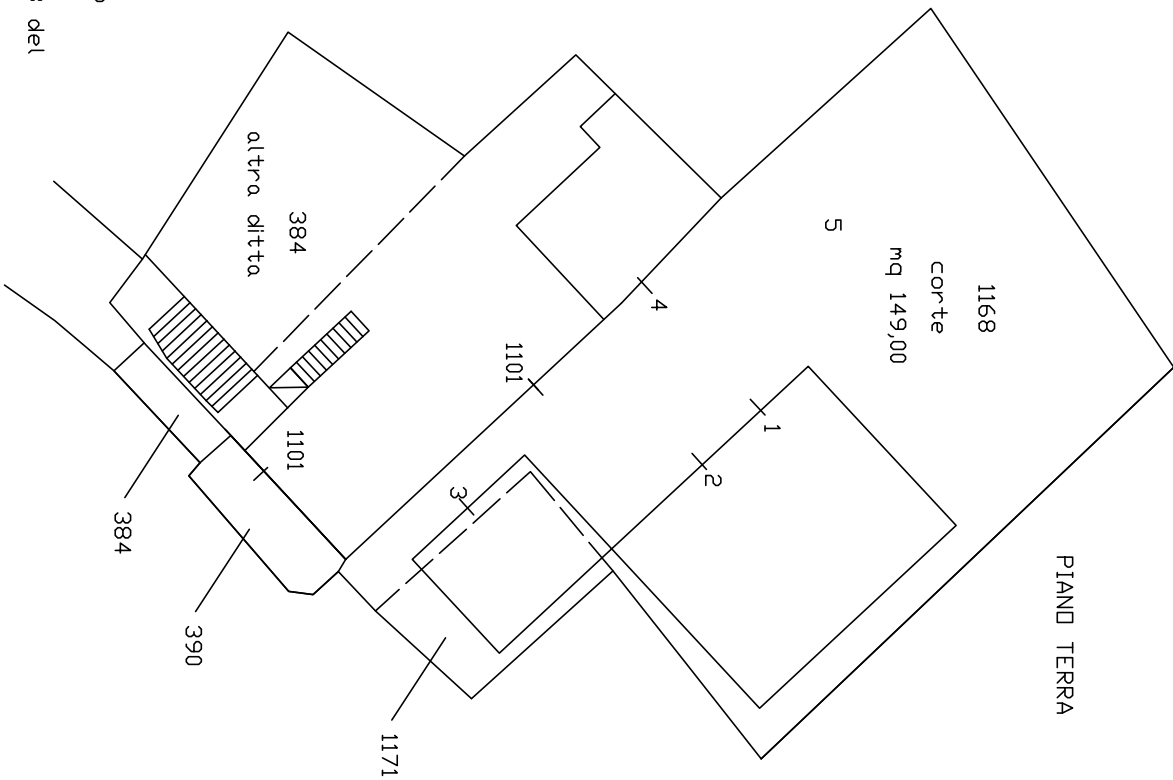
Comune di Chiaravalle Centrale

foglio di mappa n. 33 part. n. 1168, 1171 e 384 sub 1101

PIANO PRIMO



PIANO TERRA



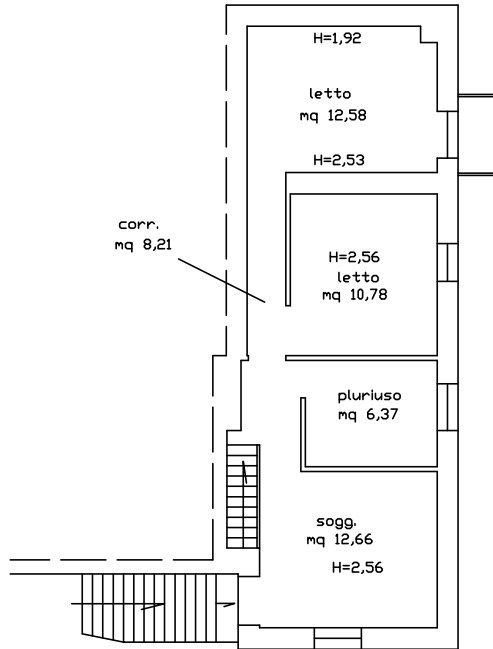
LEGENDA

1101 unità immobiliare posta al PT e P1 censita in Catasto

1,2,3,4 unità immobiliari (depositi) da censire in Catasto ricadenti sulle particelle n. 1168 e 1171 del Catasto Terreni.

5 corte di pertinenza identificata con la part. n.1168 del Catasto Terreni.

Piano Primo



Piano primo

S.U.=	letto	mq 12,58
	letto	mq 10,78
	pluriuso	mq 6,37
	sogg.	mq 12,66
	corr.	mq 8,21
	totale	mq 50,60

S.N.R.= balcone mq 1,50 x 0,60 = 0,90

TOTALE = mq 51,50

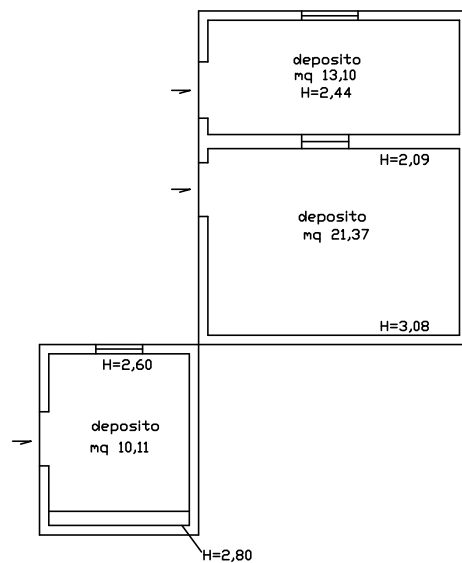
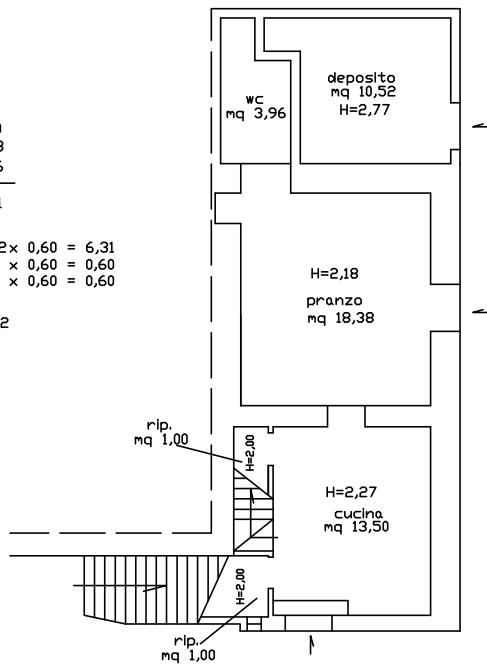
PIANO TERRA

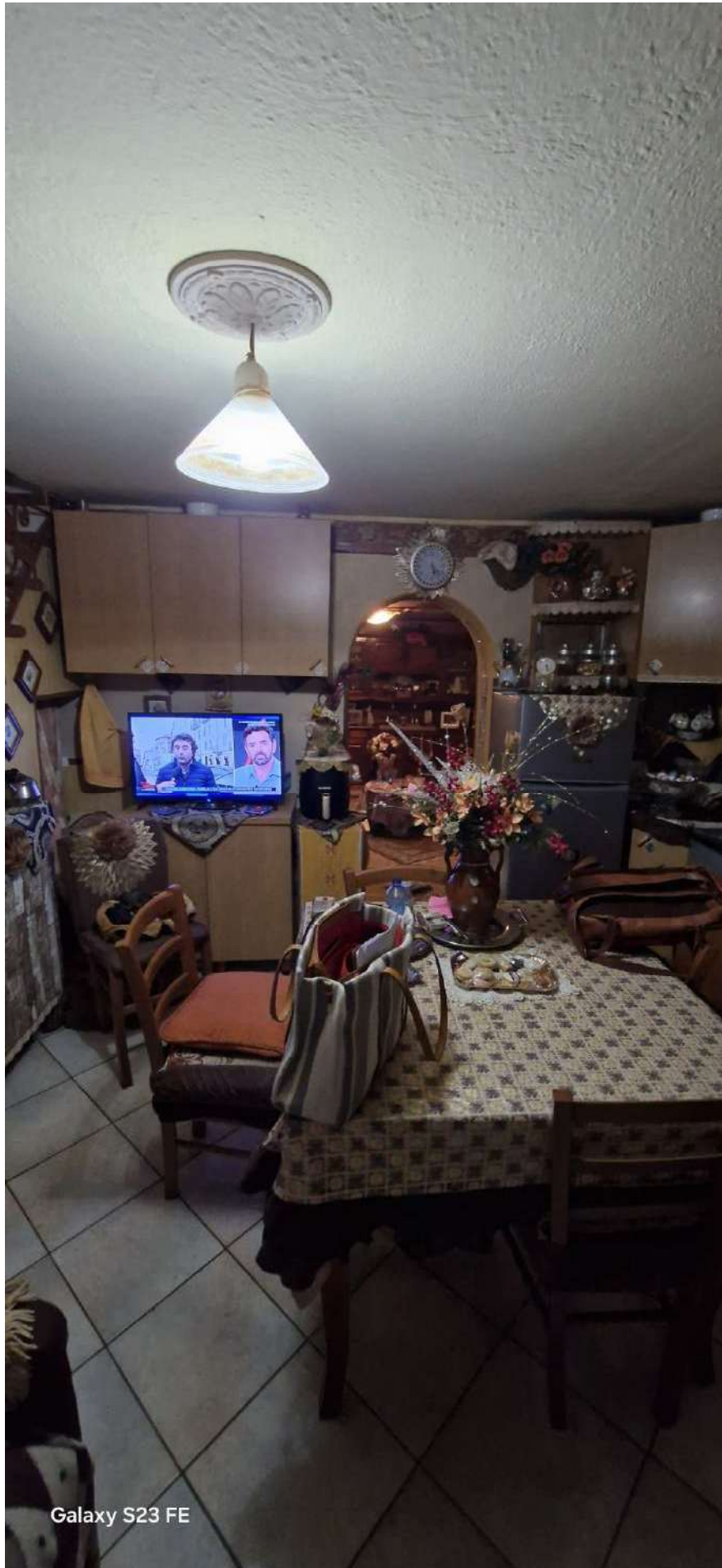
Piano Terra

S.U.=	cucina	mq 13,50
	pranzo	mq 18,38
	w.c.	mq 3,96
	totale	mq 42,01

S.N.R.= deposito mq 10,52 x 0,60 = 6,31
 ripost. mq 1,00 x 0,60 = 0,60
 ripost. mq 1,00 x 0,60 = 0,60

TOTALE = mq 49,52





Galaxy S23 FE





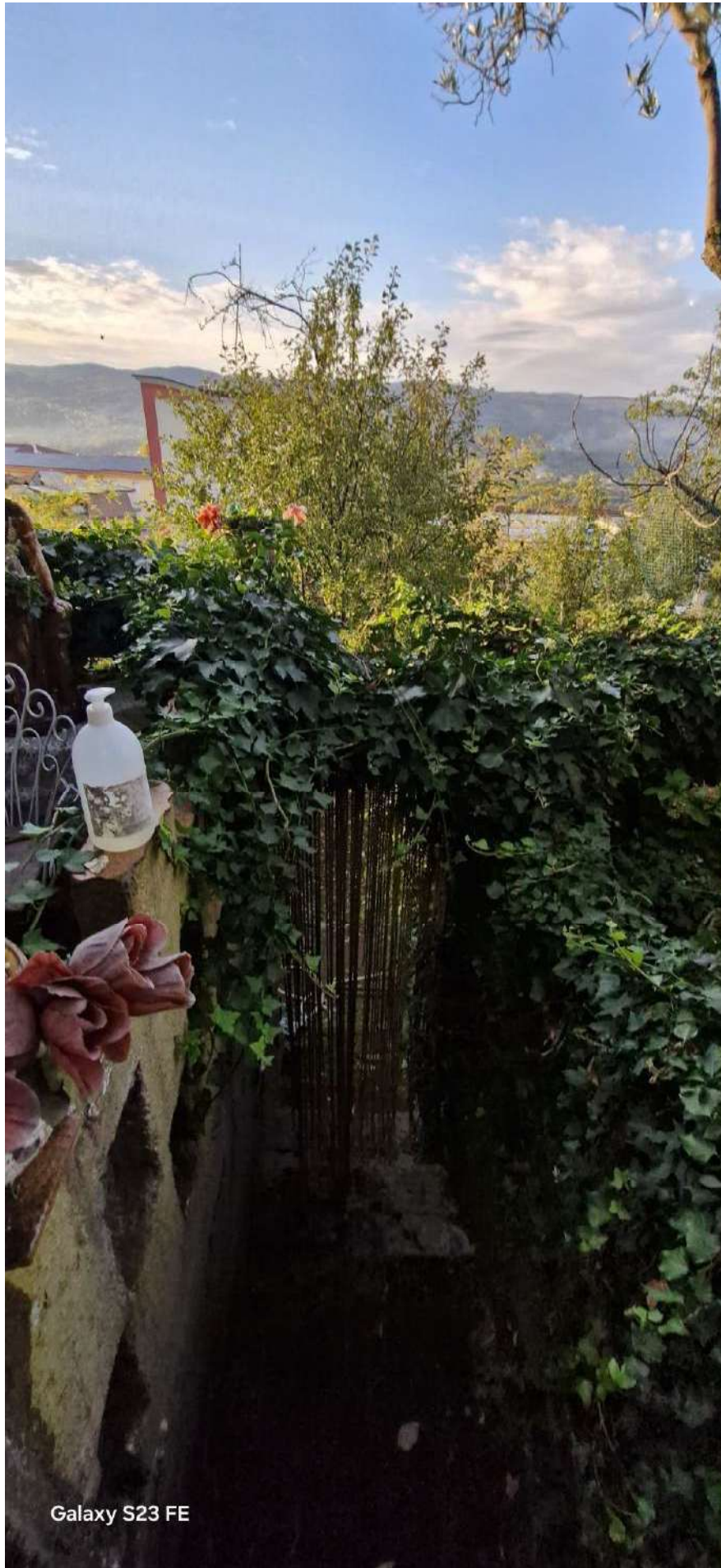
Galaxy S23 FE





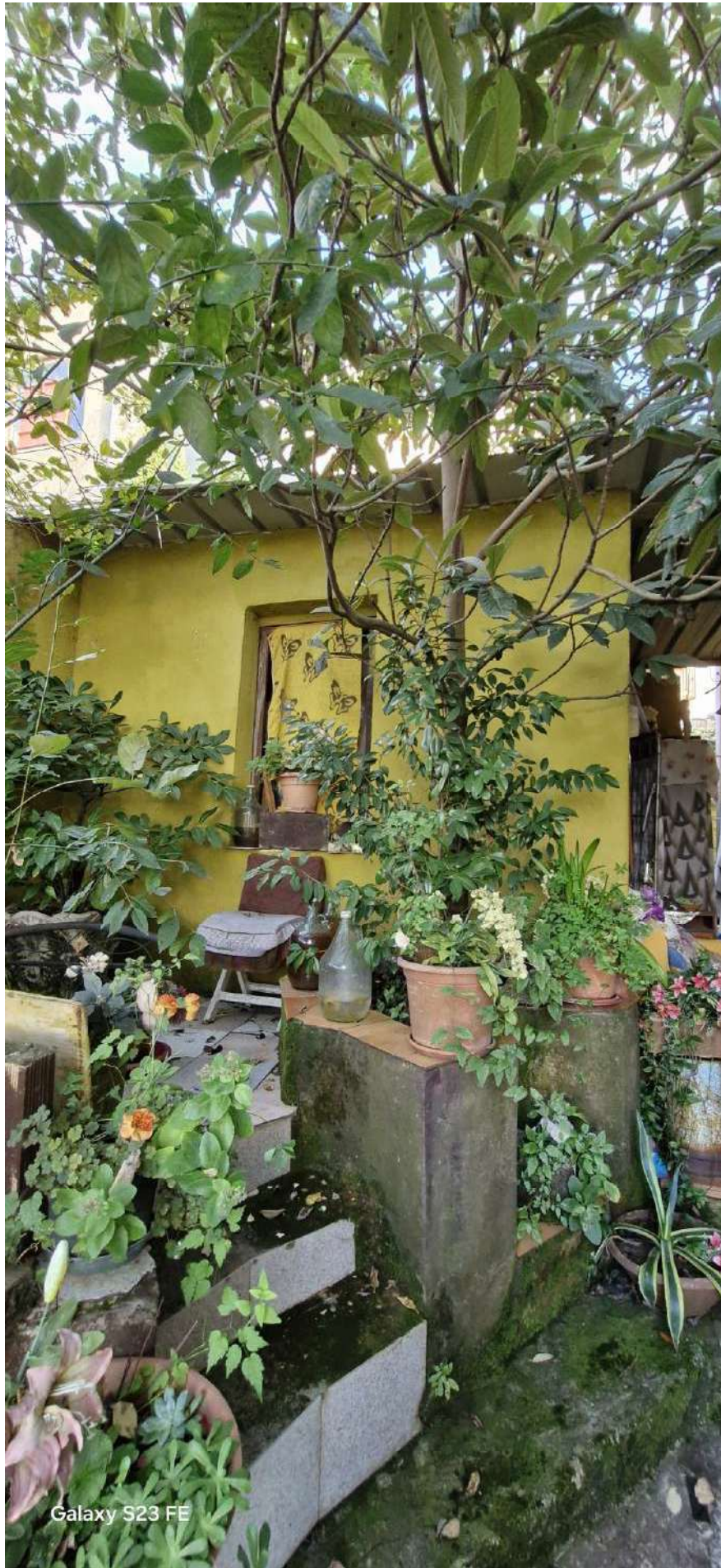
Galaxy S23 FE





Galaxy S23 FE





Galaxy S23 FE





Galaxy S23 FE





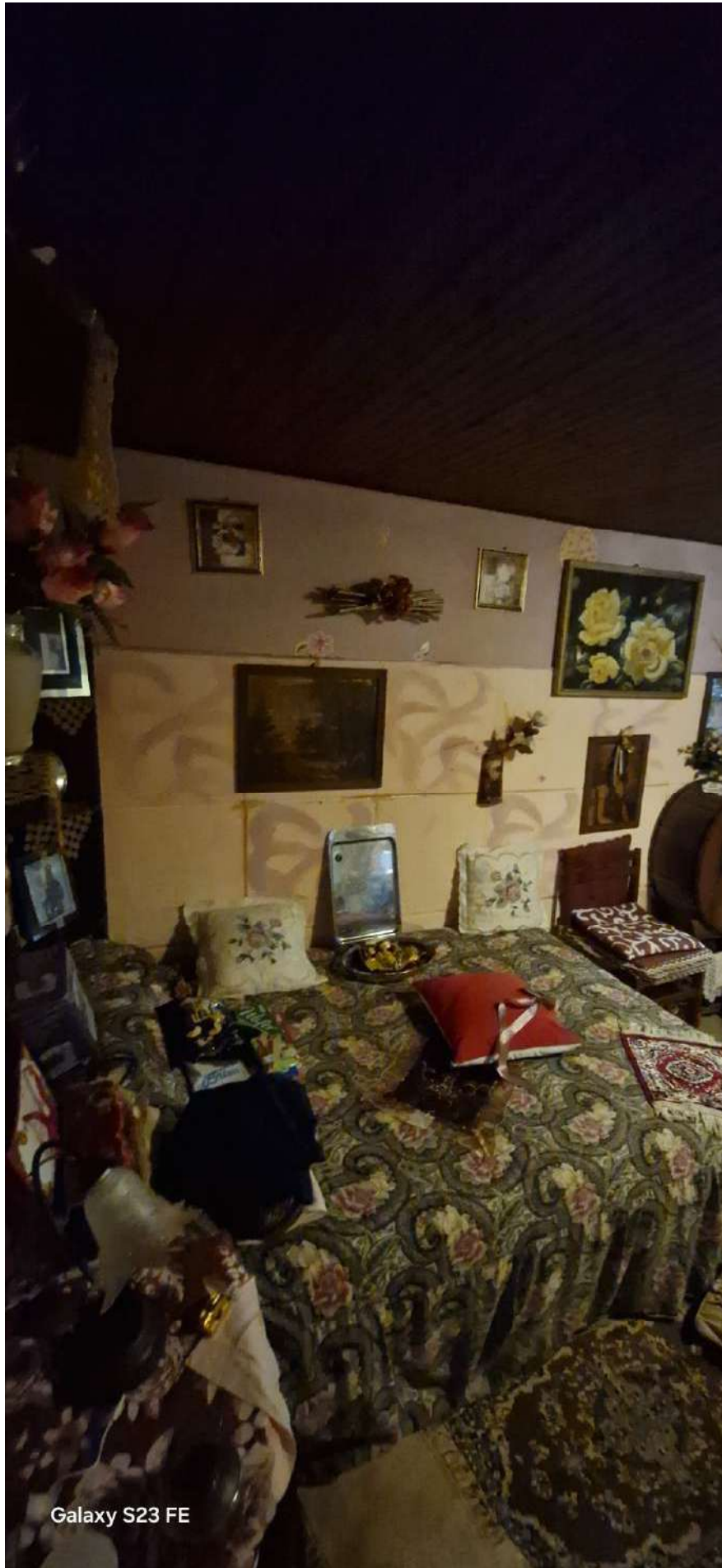
Galaxy S23 FE





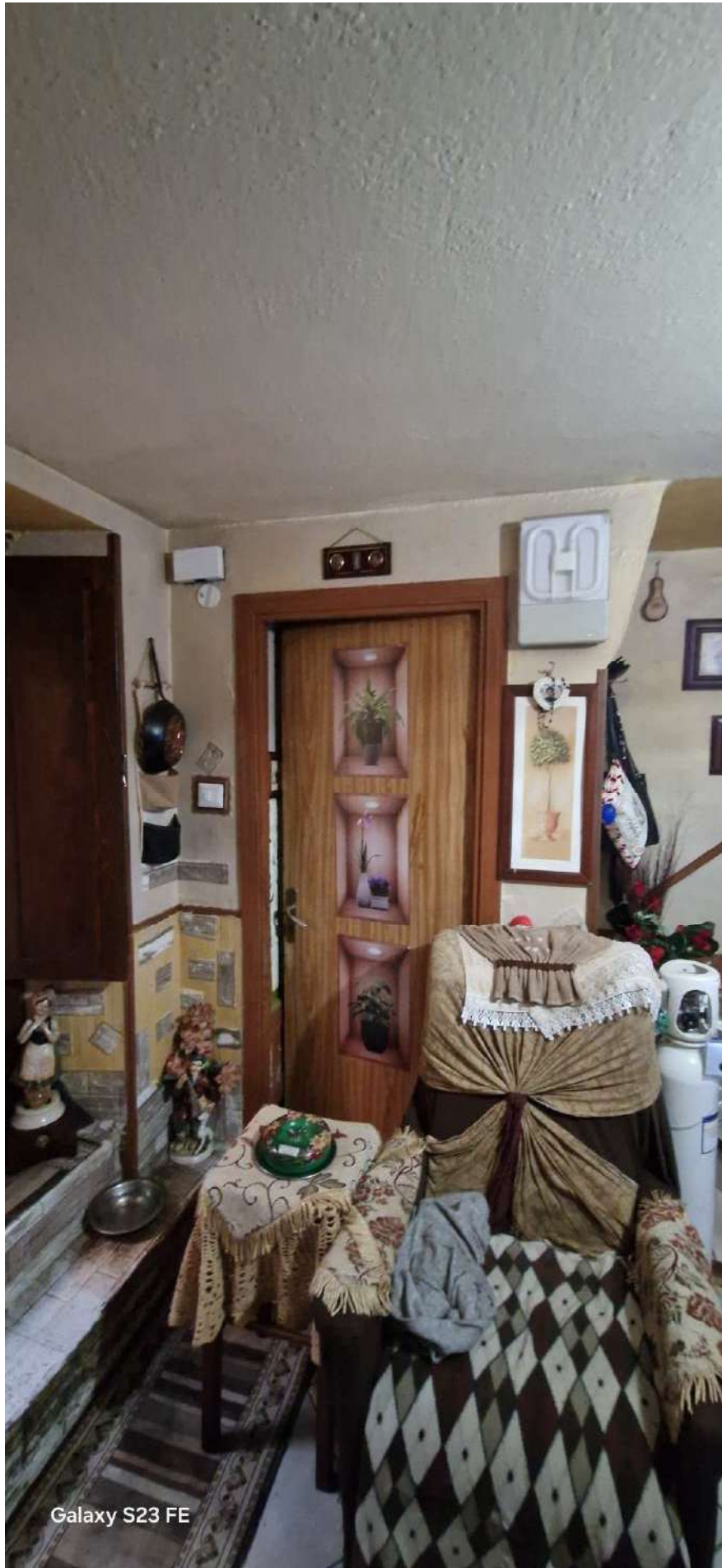
Galaxy S23 FE





Galaxy S23 FE





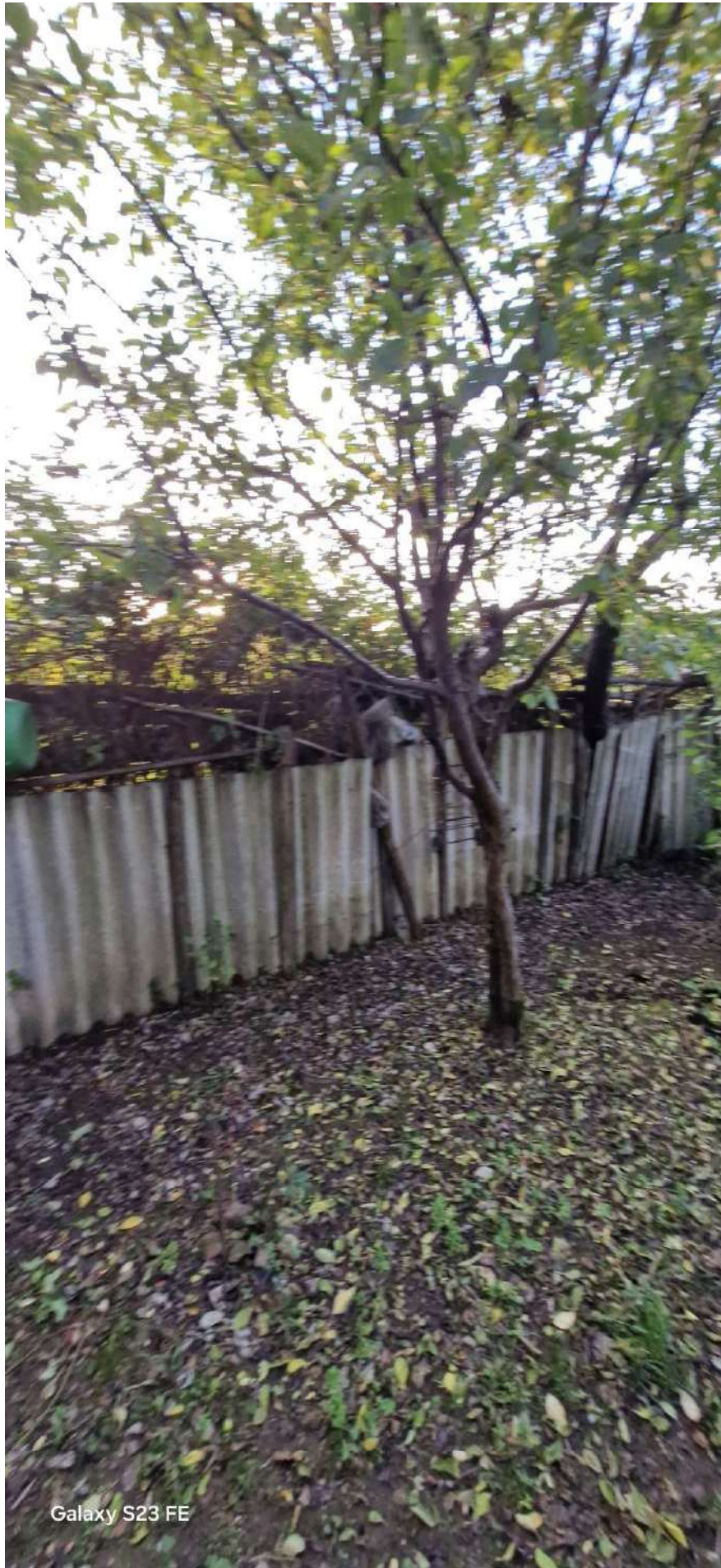
Galaxy S23 FE





Galaxy S23 FE





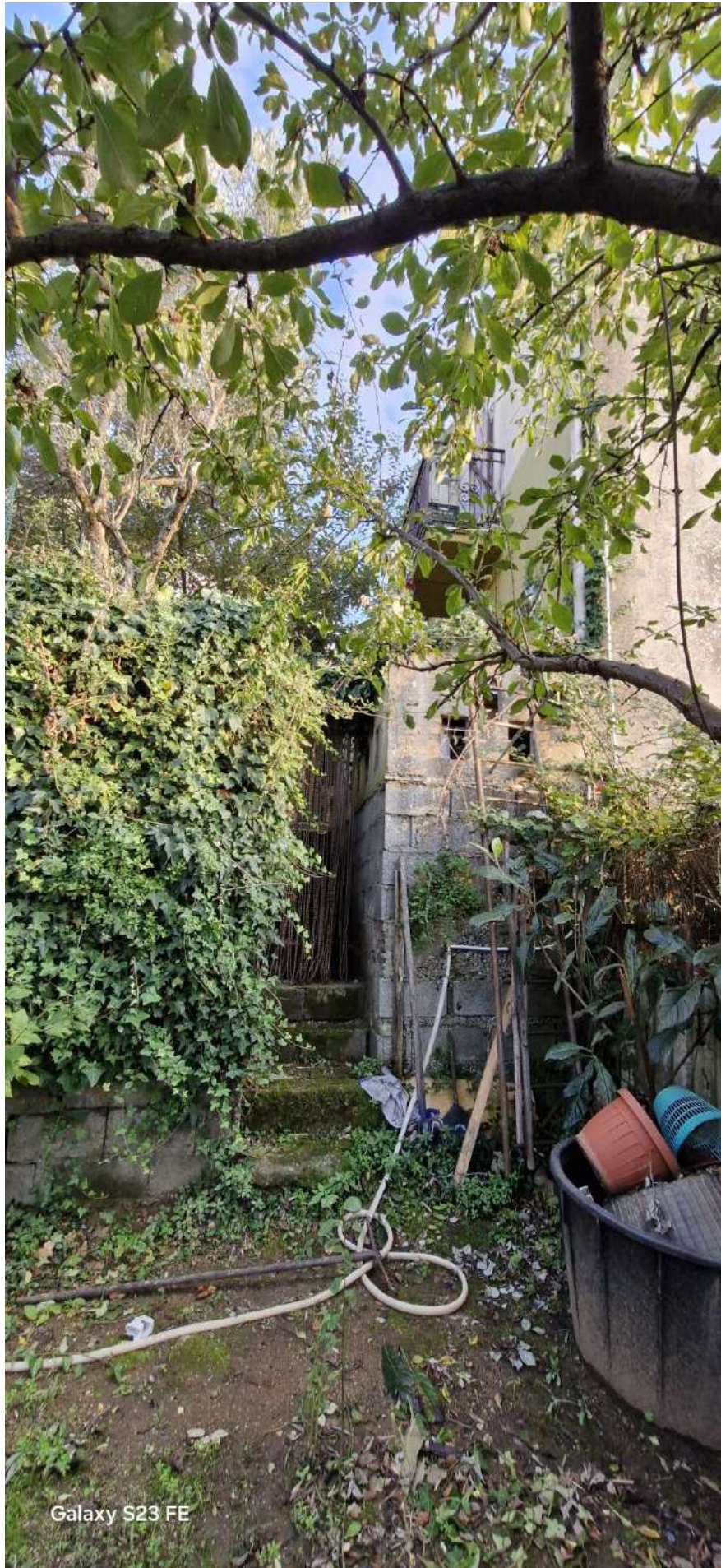
Galaxy S23 FE





Galaxy S23 FE





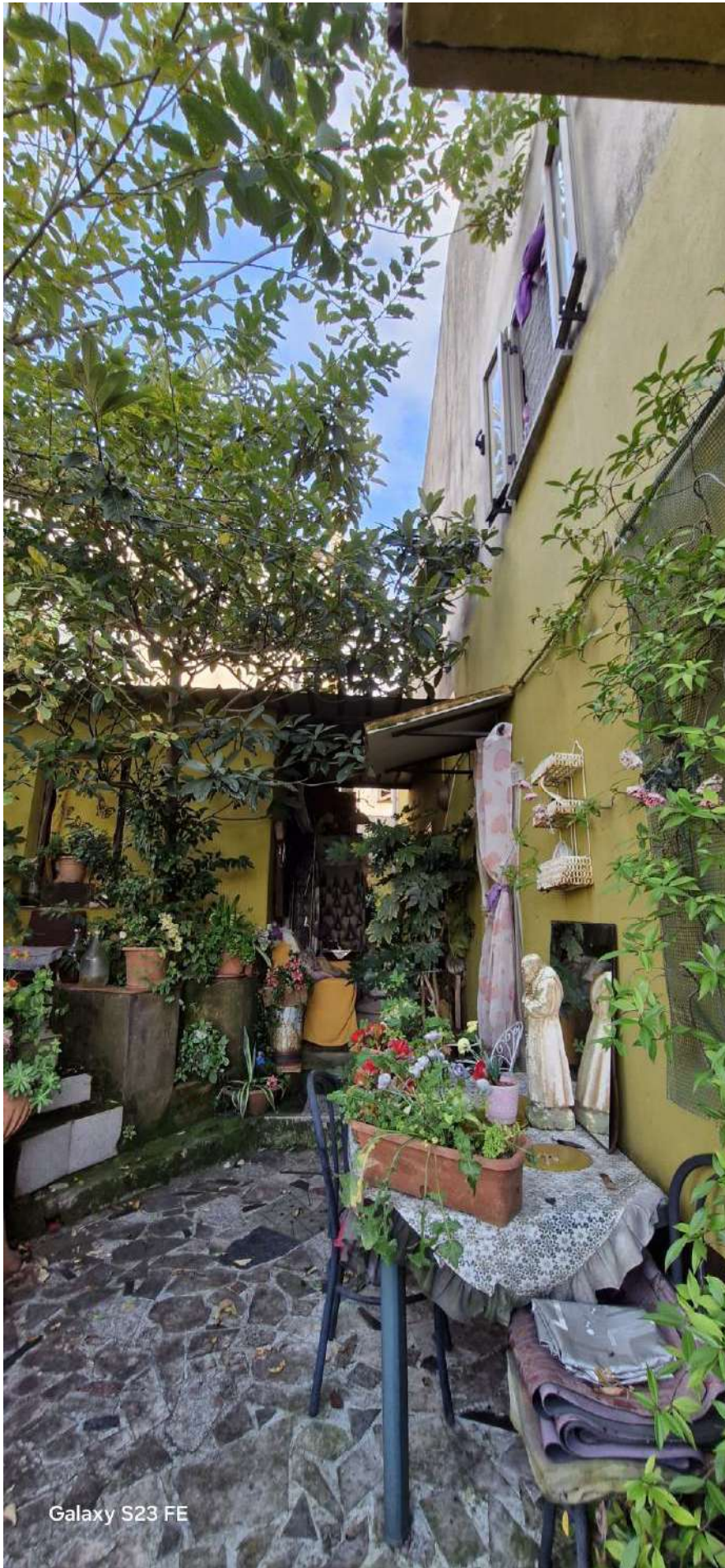
Galaxy S23 FE





Galaxy S23 FE





Galaxy S23 FE





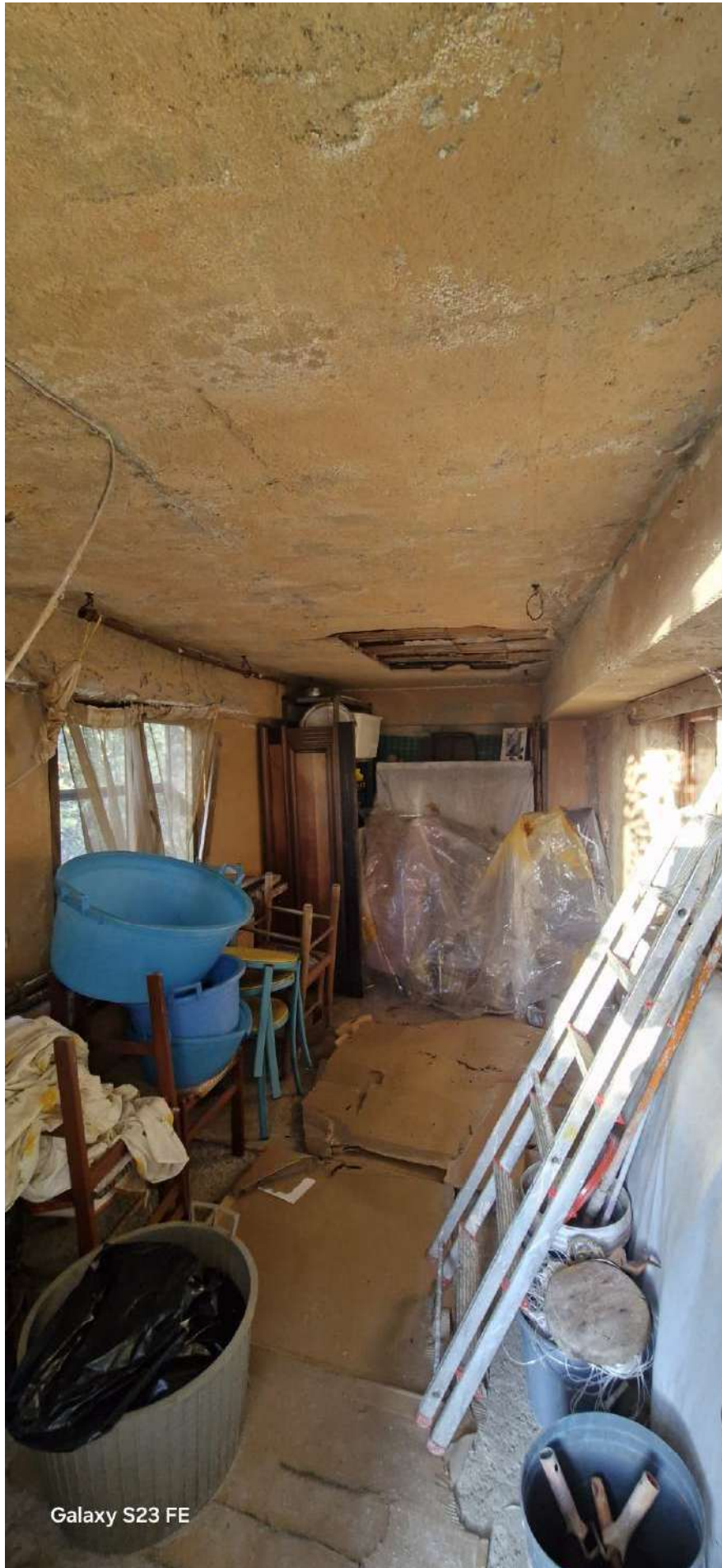
Galaxy S23 FE





Galaxy S23 FE





Galaxy S23 FE





Galaxy S23 FE





Galaxy S23 FE





Galaxy S23 FE





Galaxy S23 FE





Galaxy S23 FE





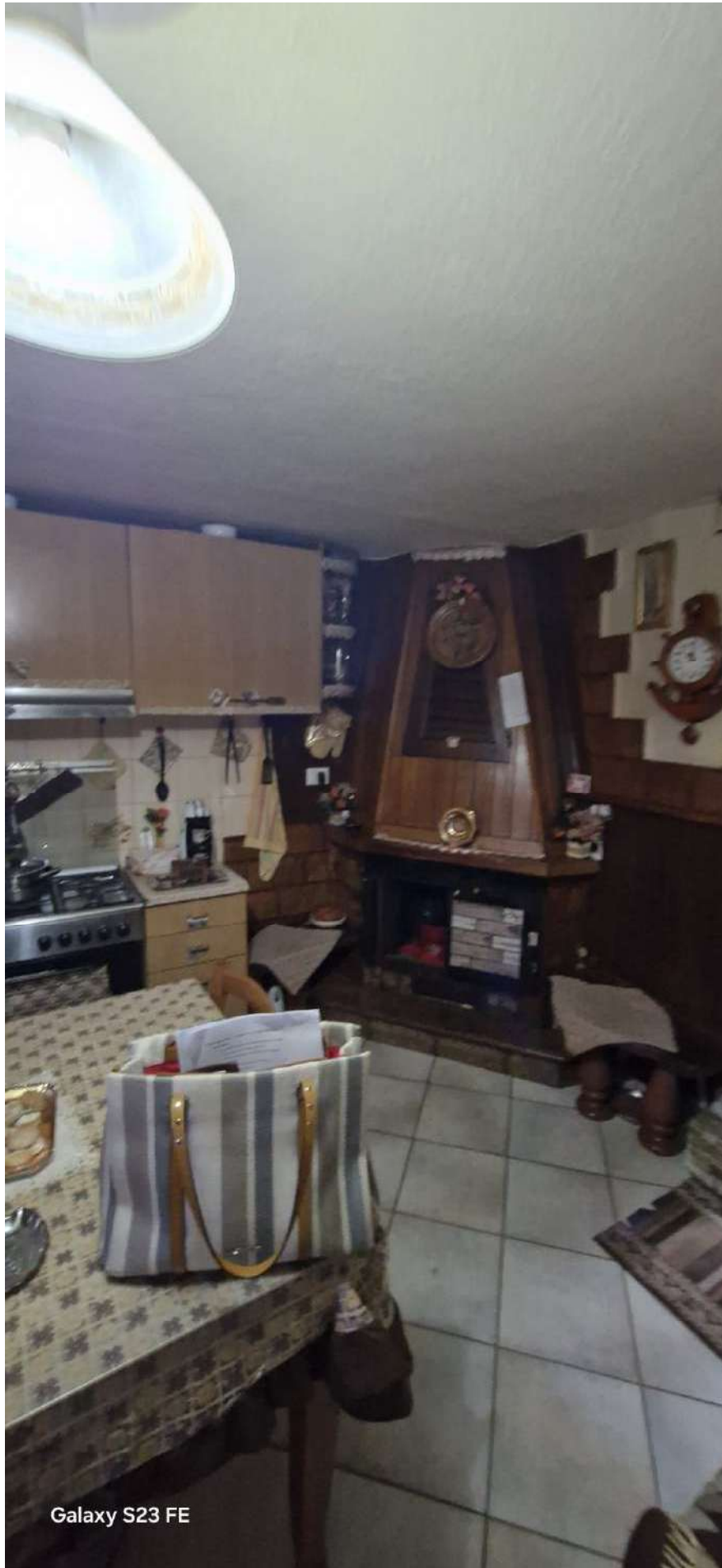
Galaxy S23 FE





Galaxy S23 FE





Galaxy S23 FE





Galaxy S23 FE

