



foto A e B – esterni su strada Stazione Frassino





foto C e D – esterni porzione condominio (appartamento al 3 piano)





foto E e F – parti comuni condominiali (accesso ai piani e seminterrato)



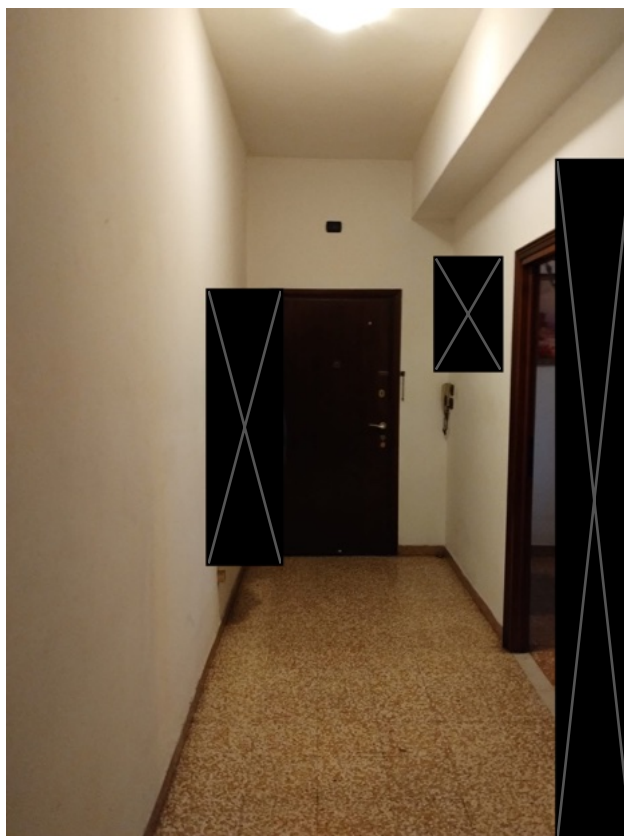


foto G e H – ingresso / corridoio appartamento p.3





foto I e L – soggiorno / pranzo p.3

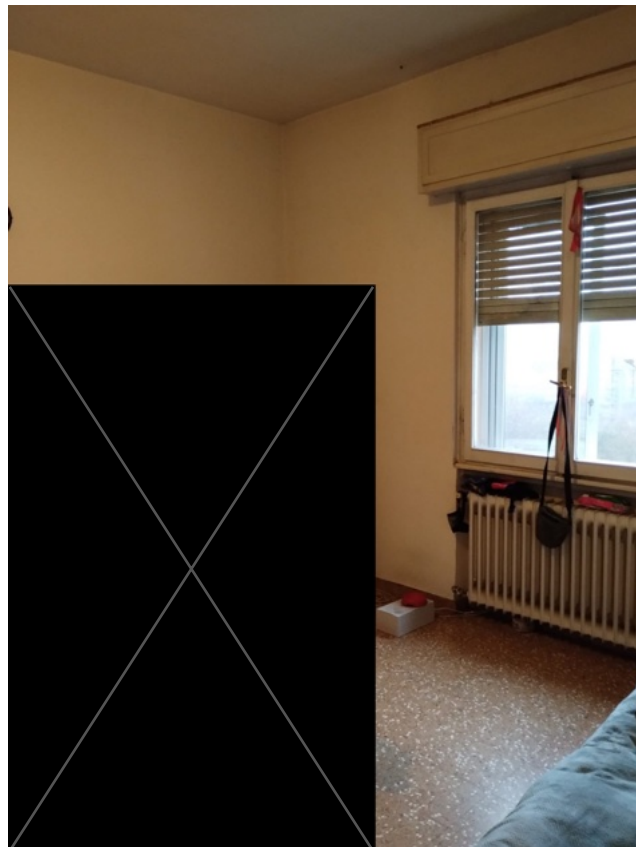




foto M – terrazzo / veranda p.3



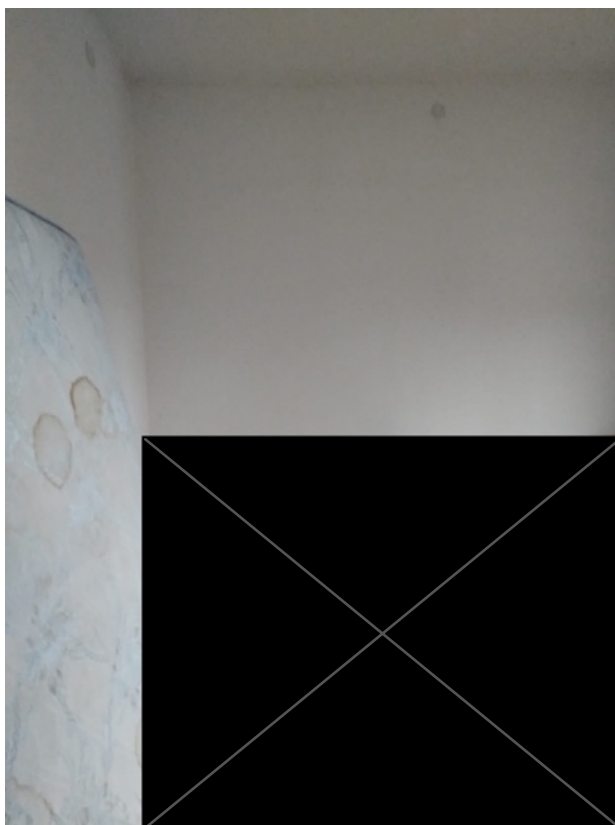


foto 1 e 2 – zona notte p. 3





foto 3 e 4 – servizio igienico p. 3



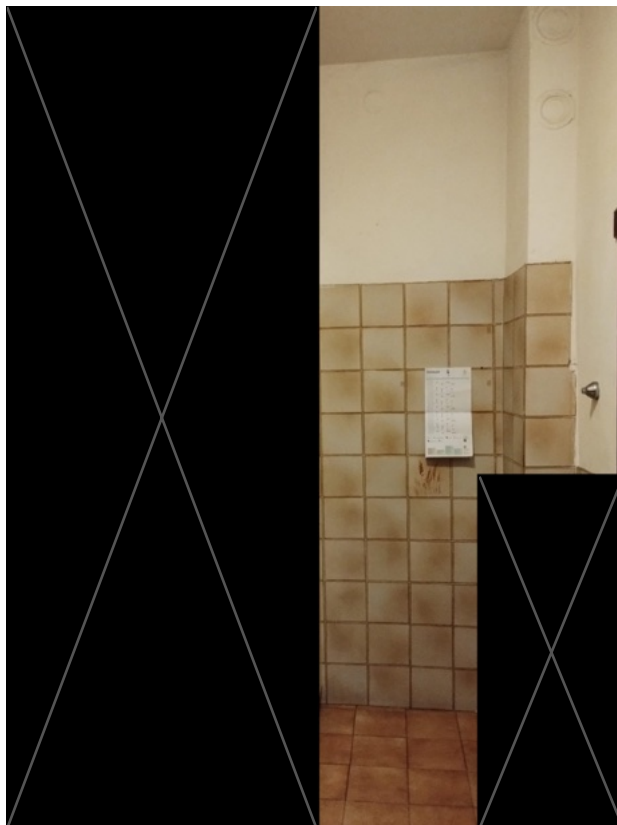


foto 5 e 6 – interni cucina e ambiente p. 3

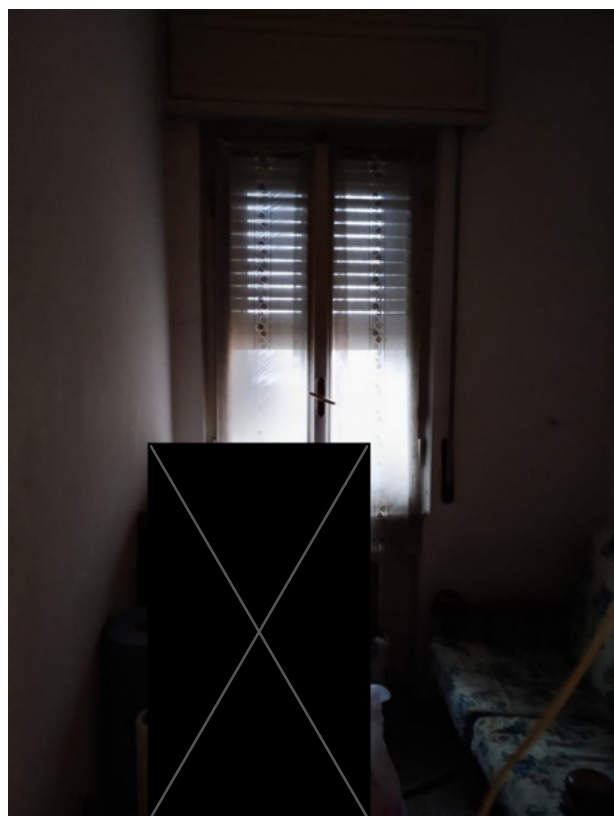




foto 7 e 8 – interni cantina p. S1

