



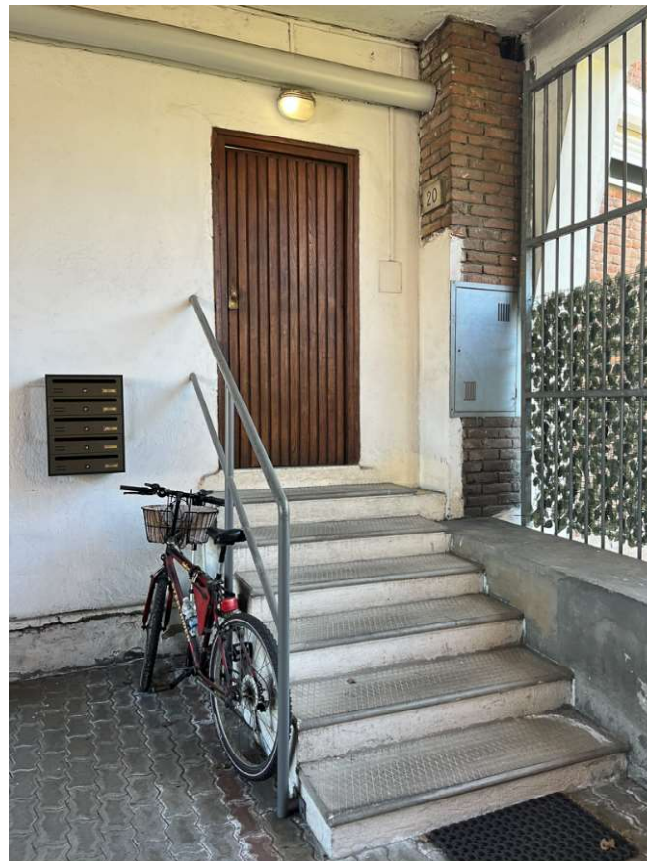
03_ingresso dal civico n. 20



04_facciata su corte interno



05_area verde comune



06_ingresso da androne comune



07_vano scala comune



08_ingresso da vano scala comune



09_dettaglio porta ingresso



10_dettaglio porta ingresso



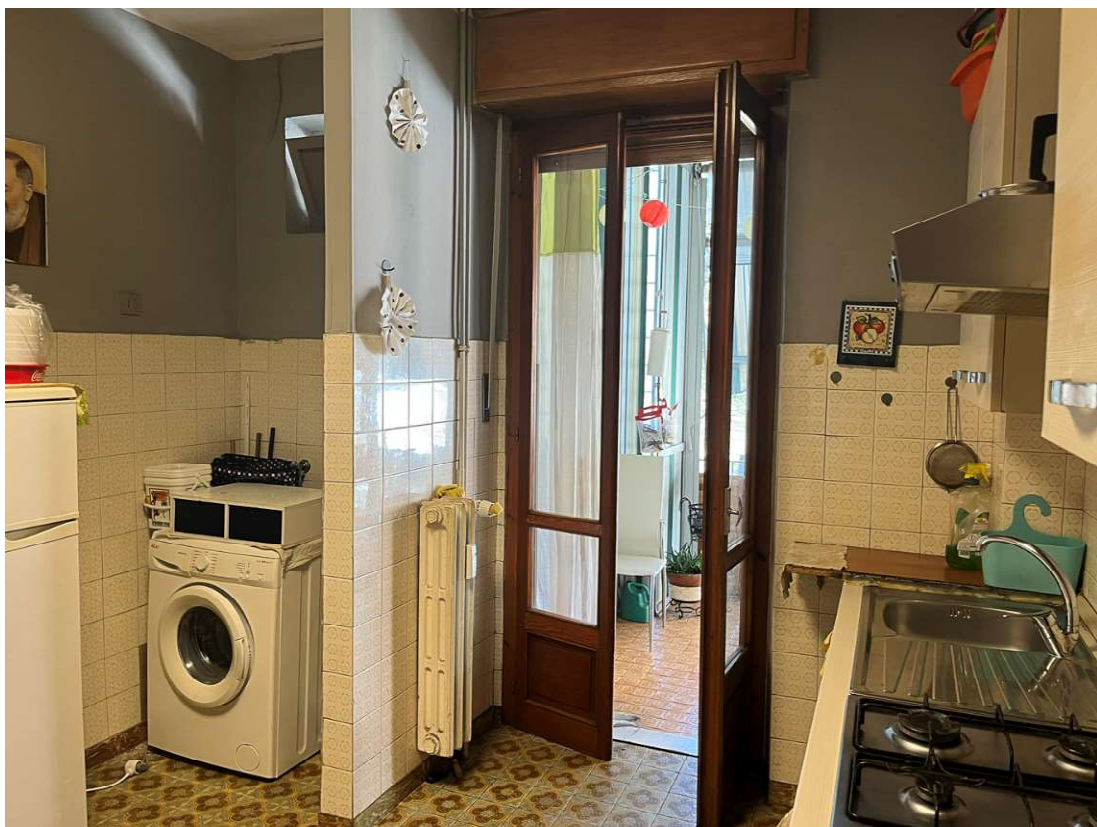
11_zona giorno



12_dettaglio citofono e contatori



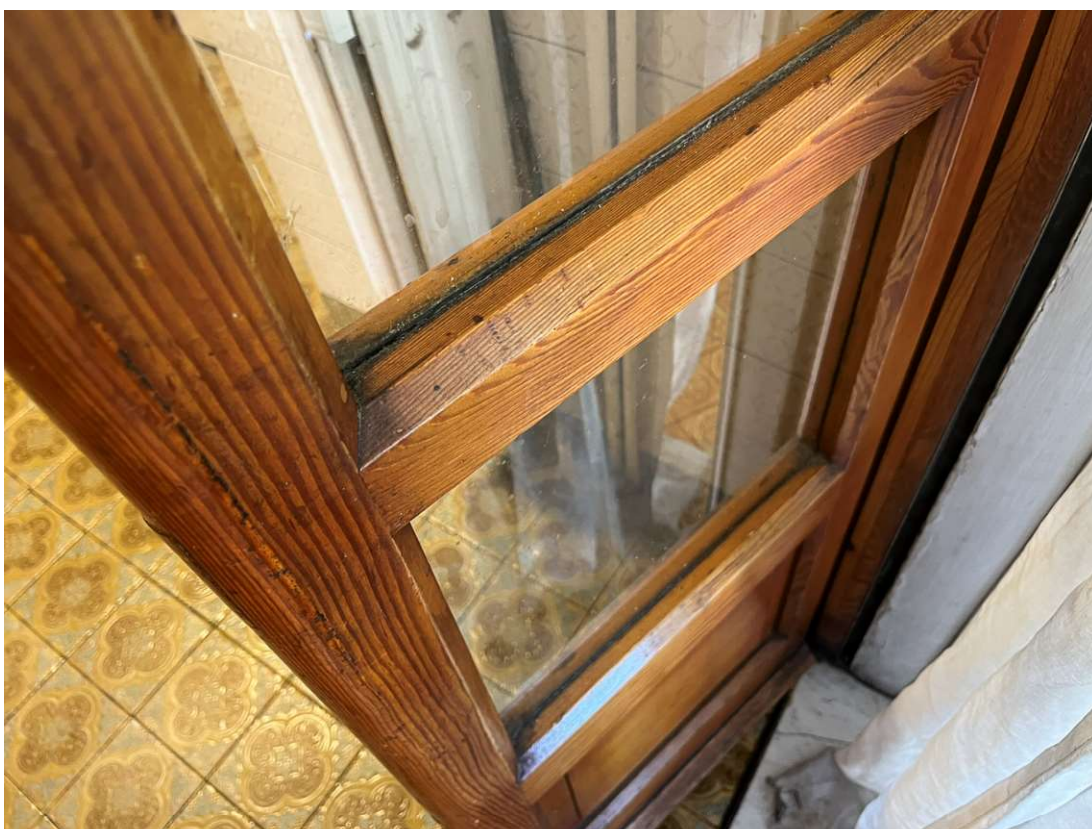
13_cucina



14_cucina



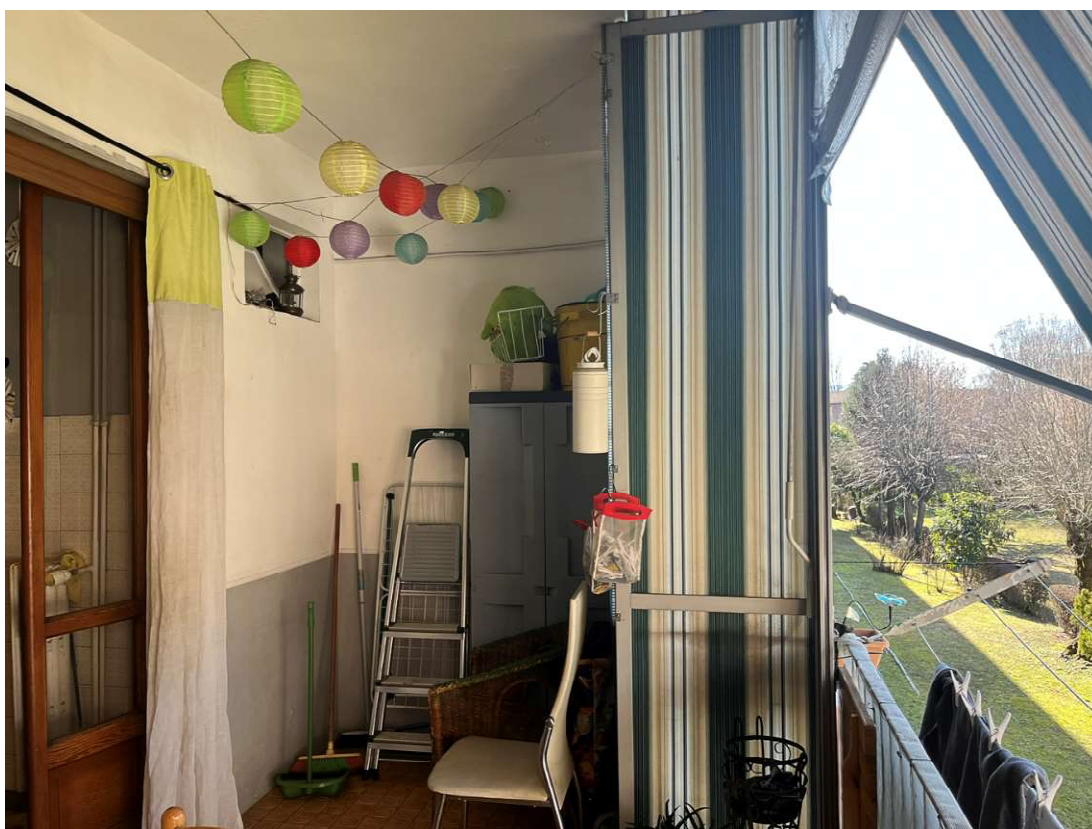
15_dettaglio finestra cucina



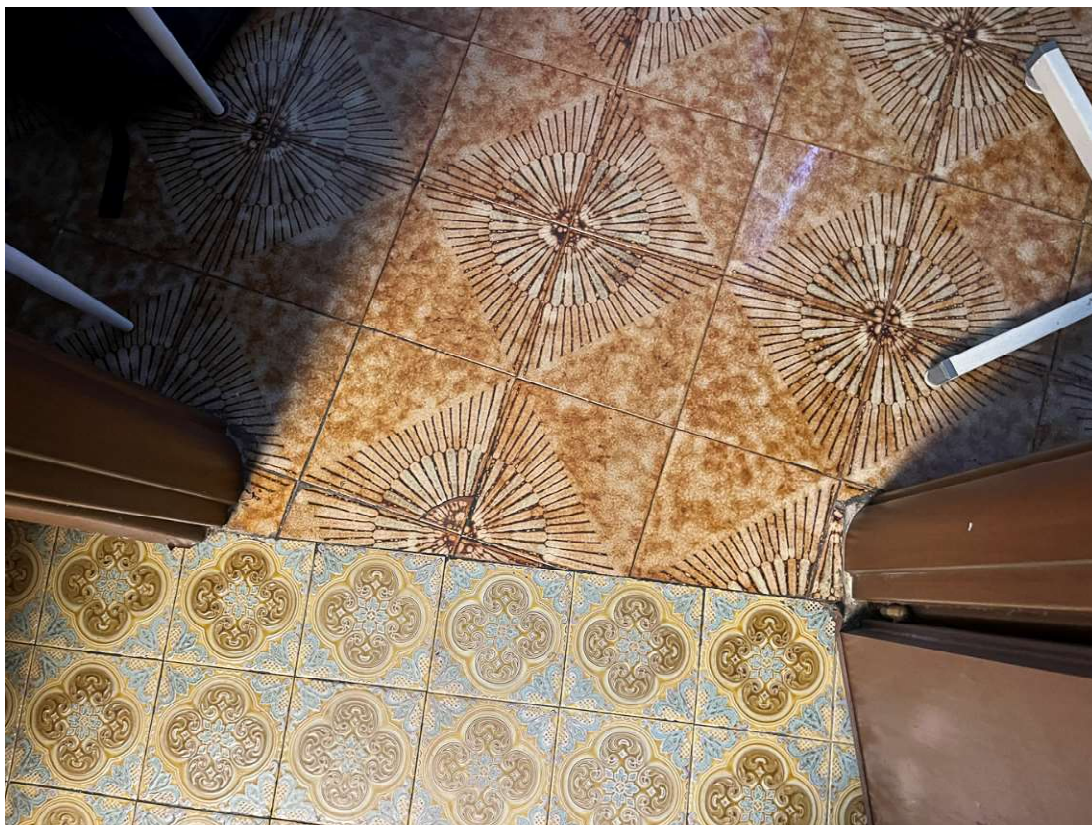
16_dettaglio portafinestra cucina



17_balcone



18_balcone



19_dettaglio pavimento



20_zona giorno



21_camera



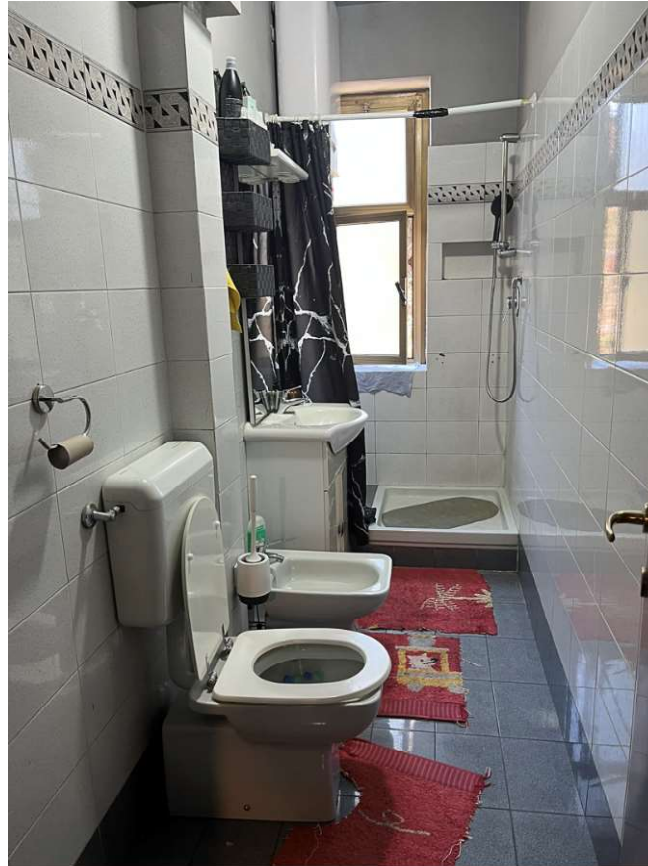
22_dettaglio finestra camera



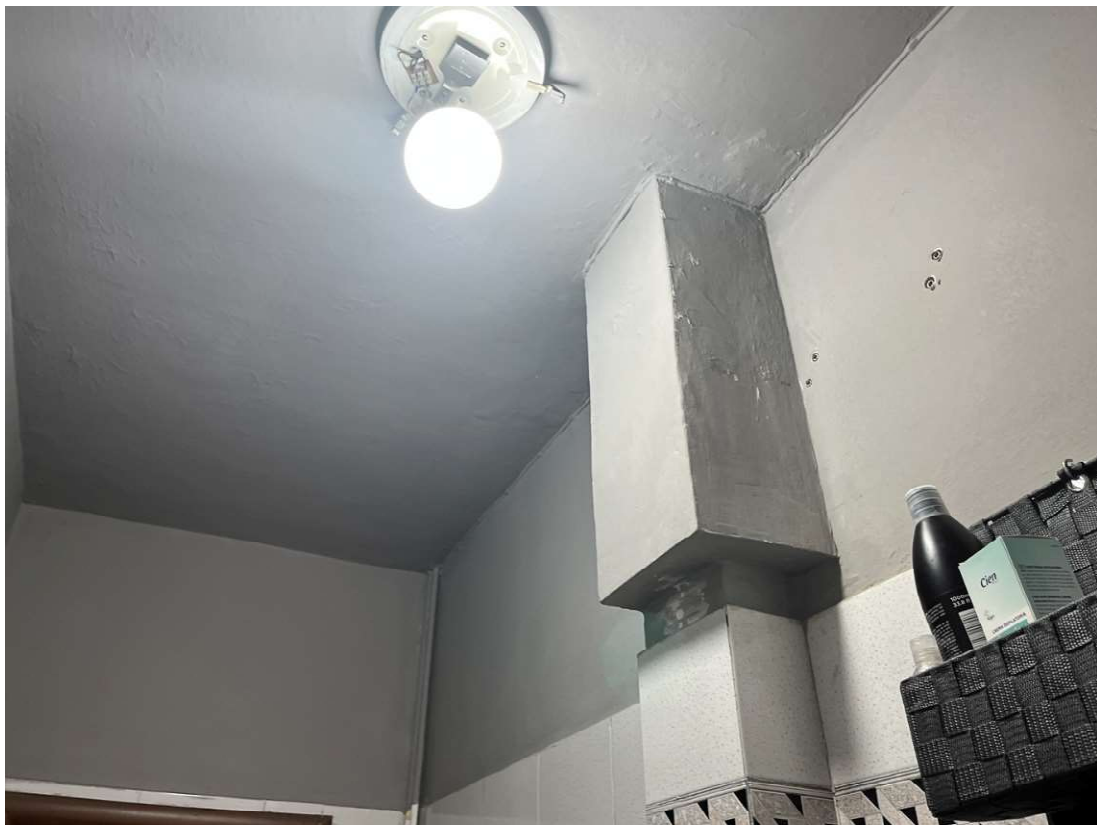
23_camera



24_corridoio



25_bagno



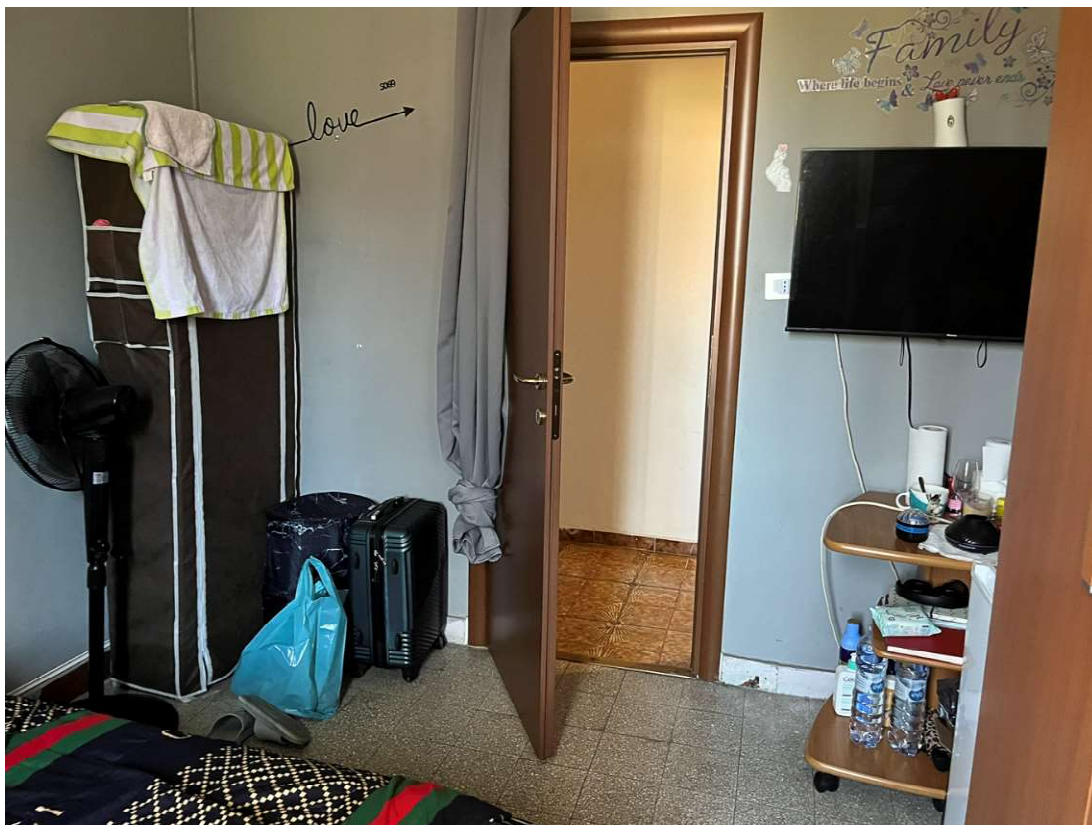
26_bagno



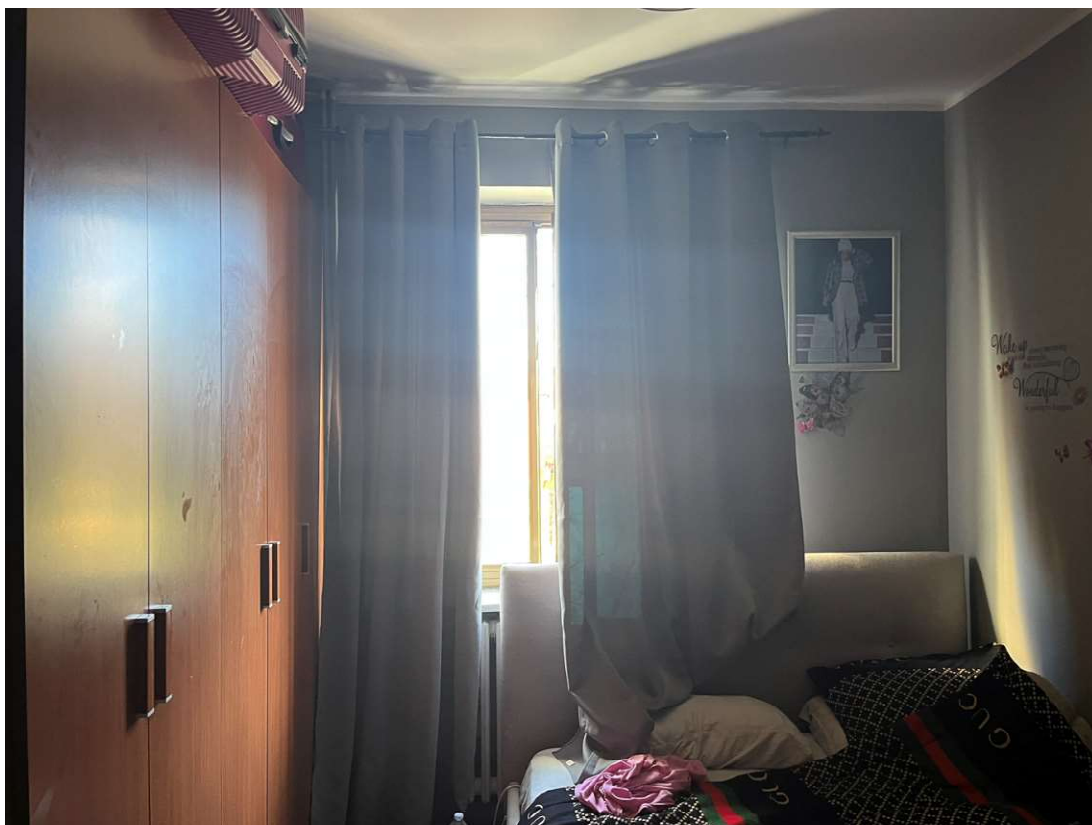
27_bagno



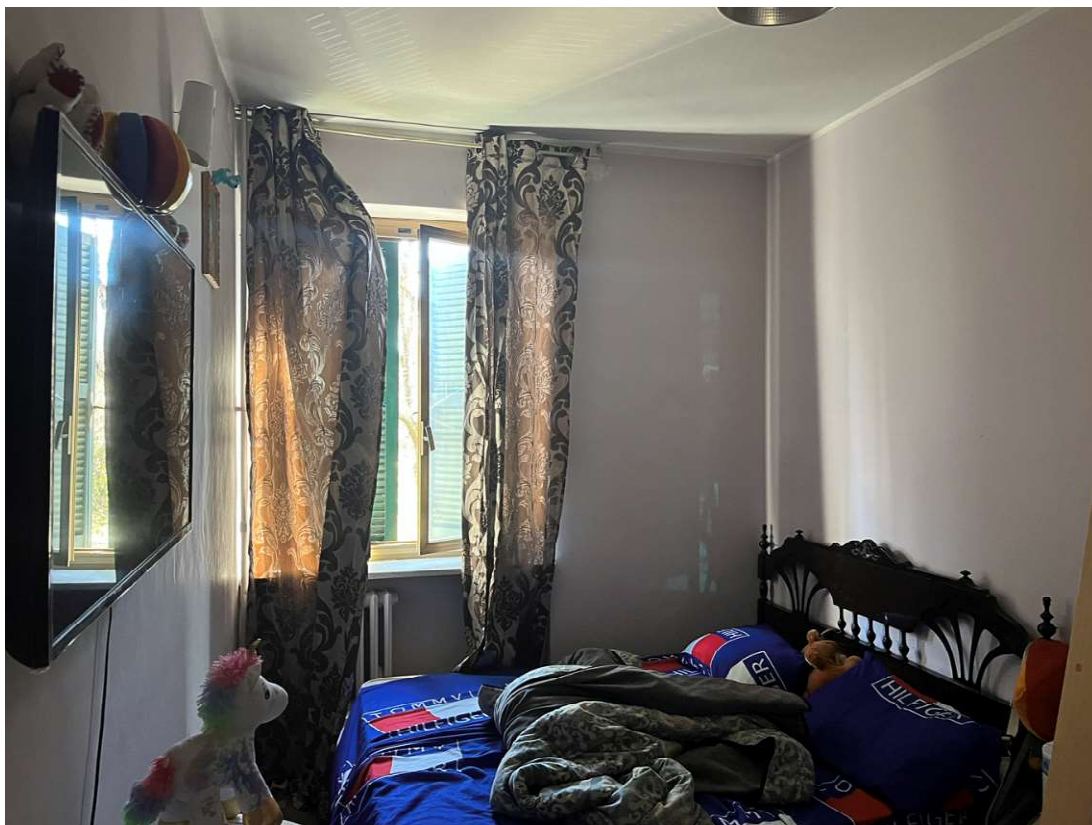
28_dettaglio caldaia bagno



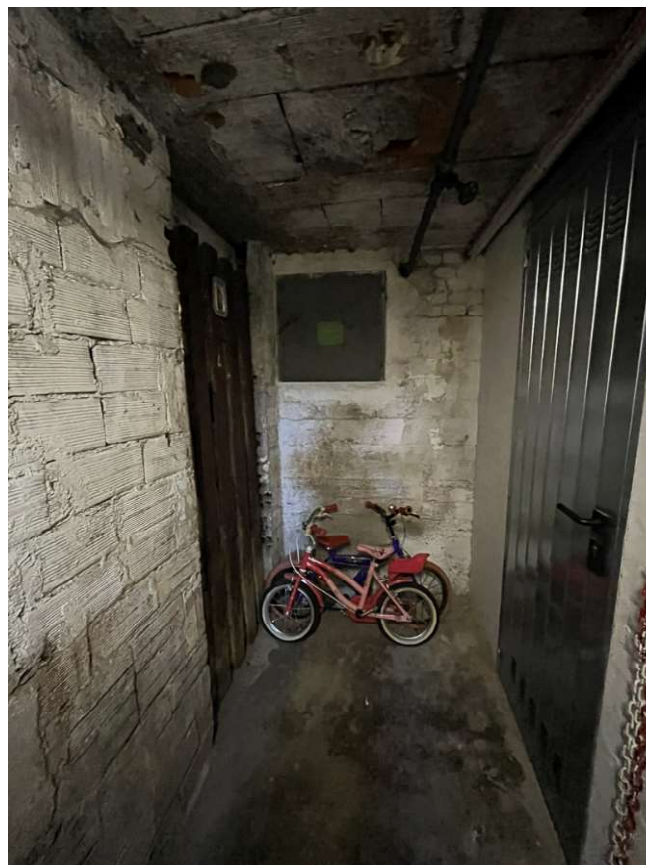
29_camera



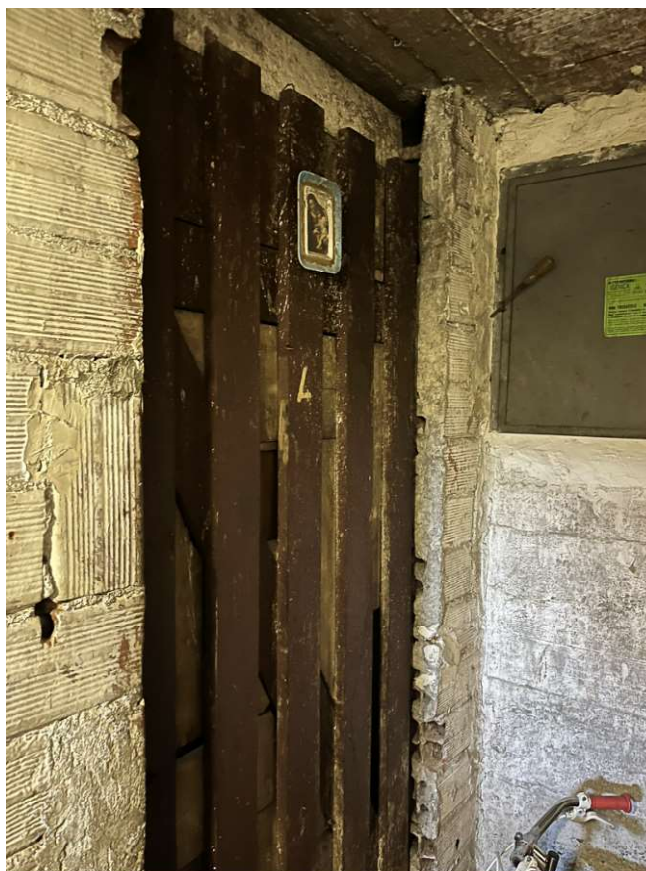
30_camera



31_camera



32_corridoio comune cantine



33_porta cantina n. 4



34_locale cantina