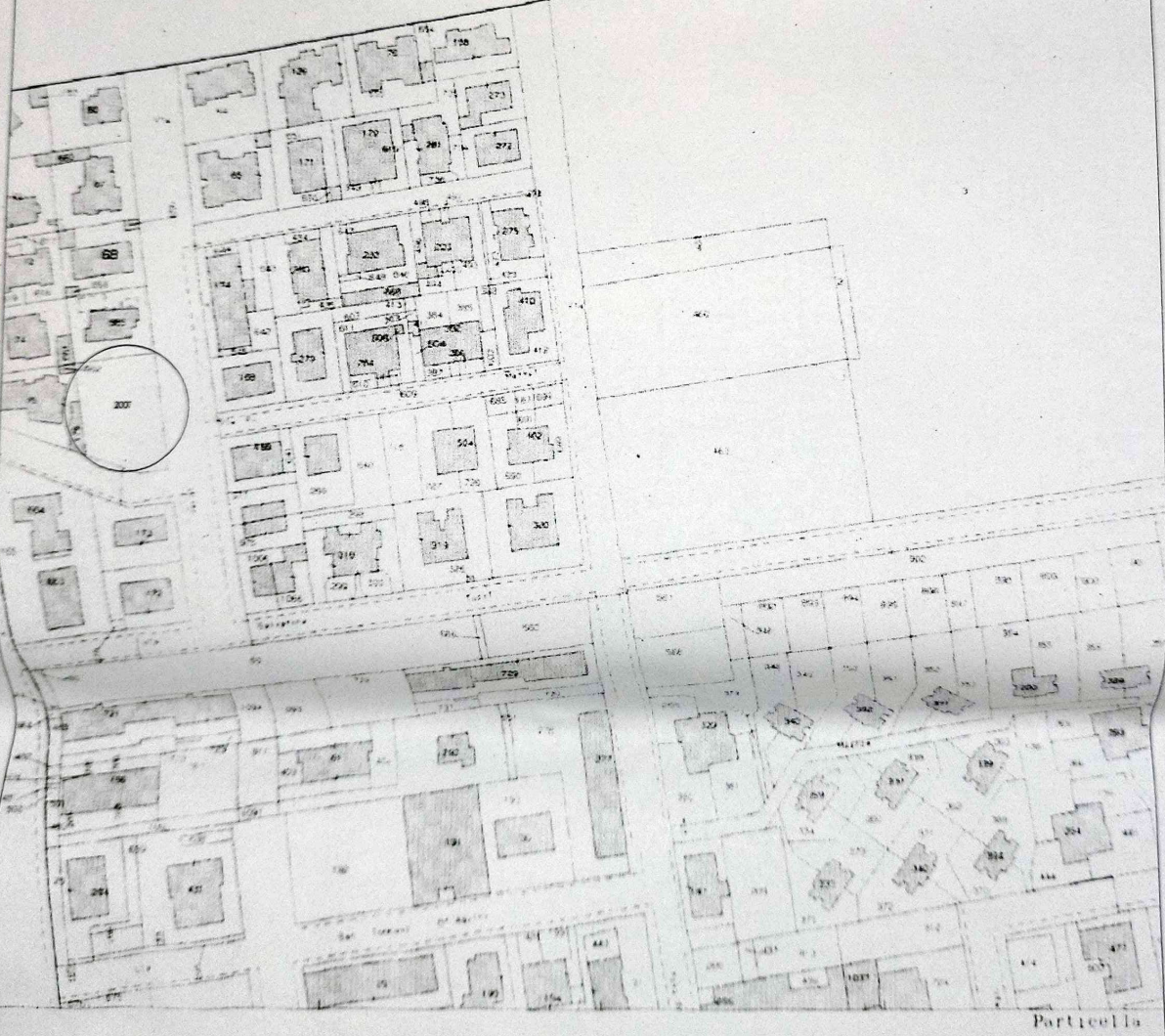
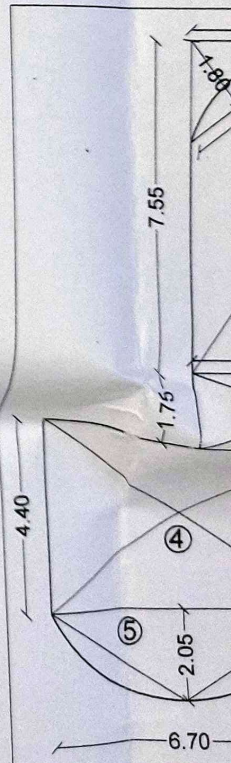


Per Visu



PLA



CALCOLO

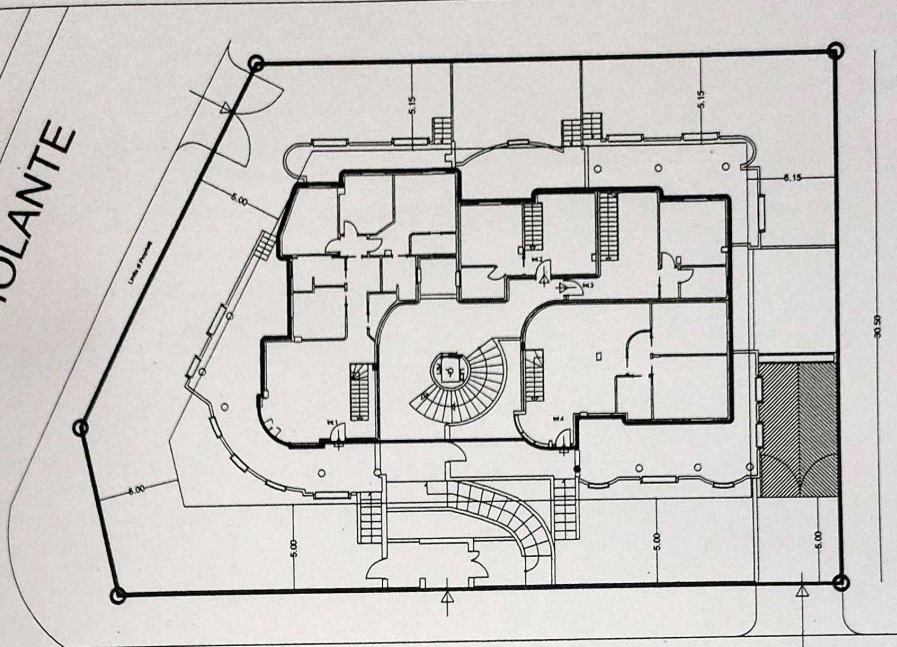


STRALCIO CATASTALE scala 1:2000
 Foglio n° 172 particella 2007

RIFERIMENTI CATASTALI:

Appartamen
collegati a

VIA SICIOLANTE

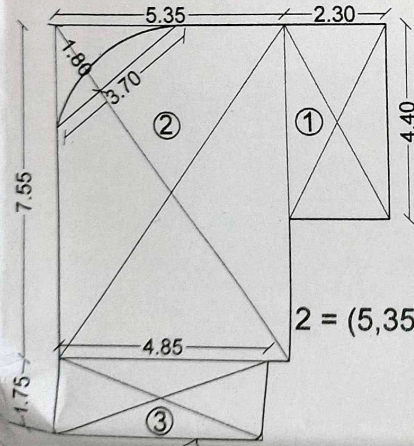


Via Verdi



PLANIMETRIA UBICATIVA 1:200

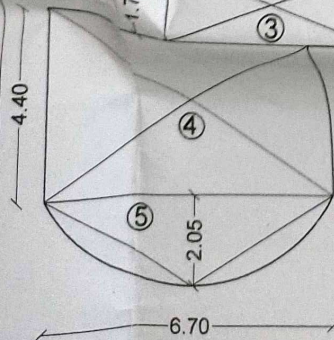
Ante operam 1:100



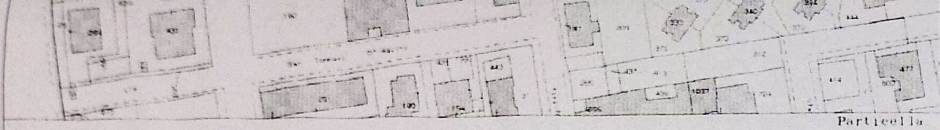
CALCOLO SUPERFICI LORDE

- 1 = 2,30 m x 4,40 m = 10,12 mq
- 2 = (5,35 m x 7,55 m) - (3,70 m x 1,80 m) : 2 = 37,06 mq
- 3 = 4,85 m X 1,75 m = 8,48 mq
- 4 = 6,70 m x 4,40 m = 29,48 mq
- 5 = (6,70 m x 2,05 m) : 2 = 6,86 mq
- TOT = 92,00 mq

VOLUME = tot mq 92.00 x h 2,60 m = 239.20 mc



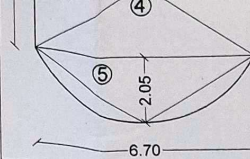
CALCOLO DELLE VOLUMETRIA



Particella



STRALCIO CATASTALE scala 1:2000
Foglio n° 172 particella 2007

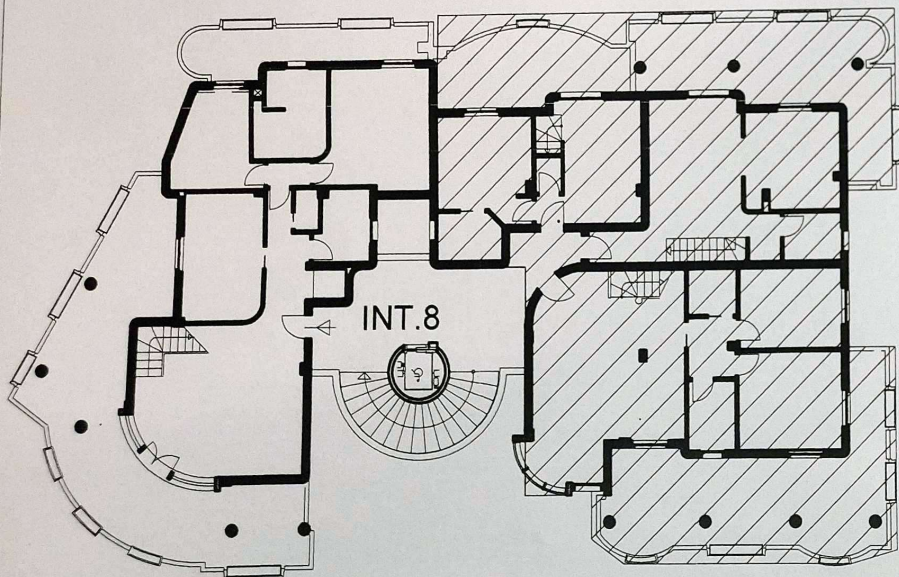


VOLUME = tot mq 92.00 x h 2,60 m = 239.20 mc

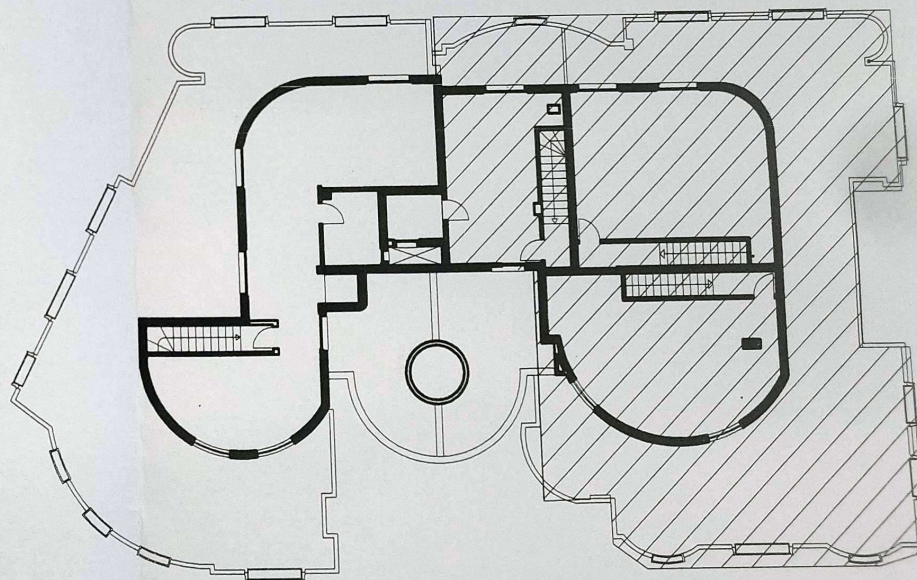
CALCOLO DELLE VOLUMETRIA

RIFERIMENTI CATASTALI:

Appartamento sito al piano secondo e terzo,
collegati a mezzo di scala interna, distinto con il num. int. 8;
Foglio 172, particella 2007, sub. 12, categoria A/2 .
Box auto sito al piano interrato;
Foglio 172, particella 2007, sub. 17, categoria C/6 32 mq.



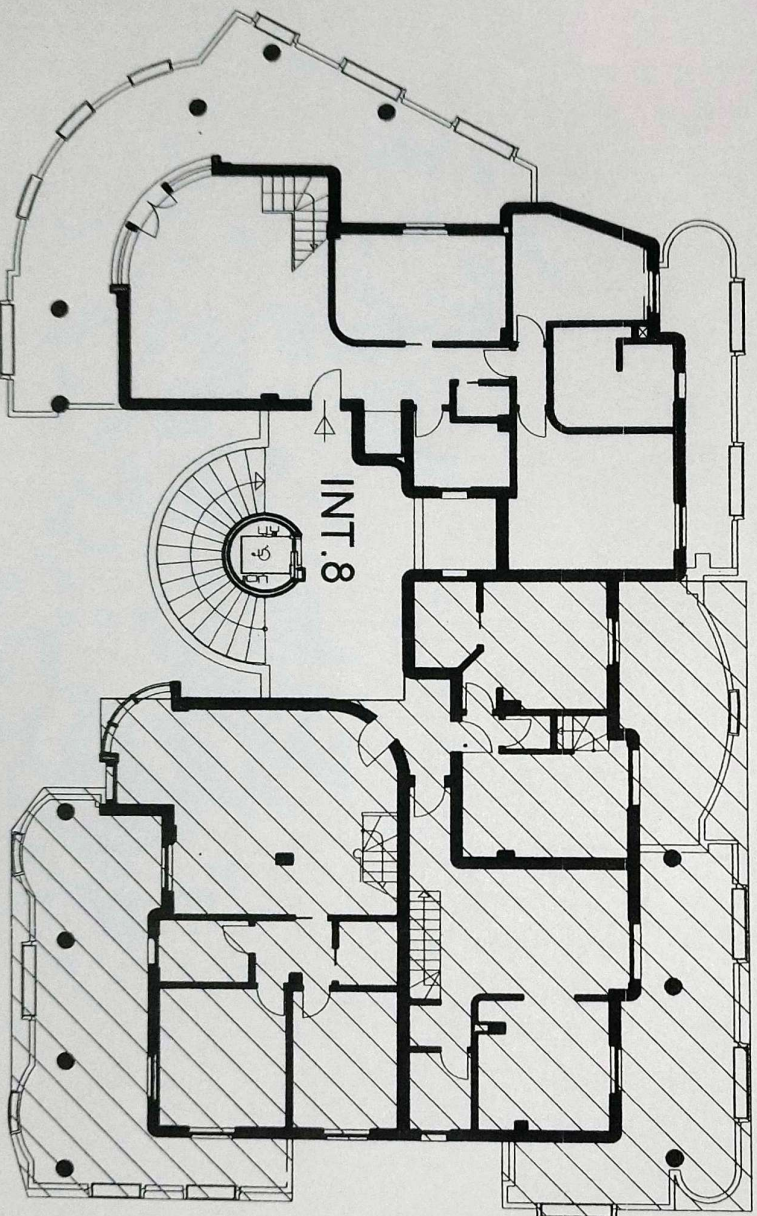
Piano secondo



Piano terzo

RIFERIMENTI CATASTALI:

Appart
collega
Foglio
Box au
Foglio



Piano secondo

Piano terzo

