

Lotto 3

Comune di Minervino Murge

**Fabbricato in corso di costruzione - viale Stazione sc
Piano interrato - terra - primo - secondo - terzo sottotetto**

Foglio 89 p.IIa 3548 sub da 5 a 16



Viale stazione



Vista dal viale



prospetto su strada



Vista laterale su rampa



dettaglio prospetto



Parete laterale



accesso condominiale



Rampa interrato in parte sul lotto 3519



vista cortile

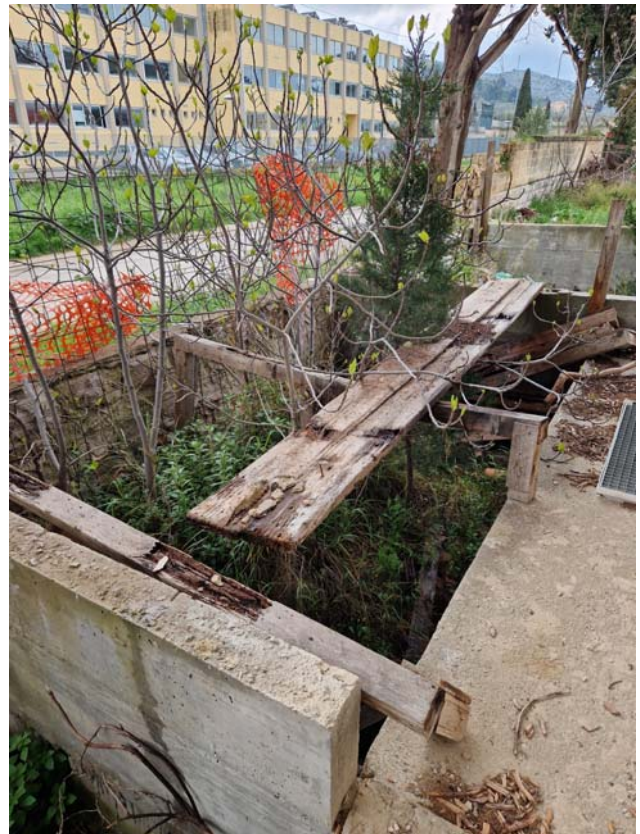
PIANO INTERRATO

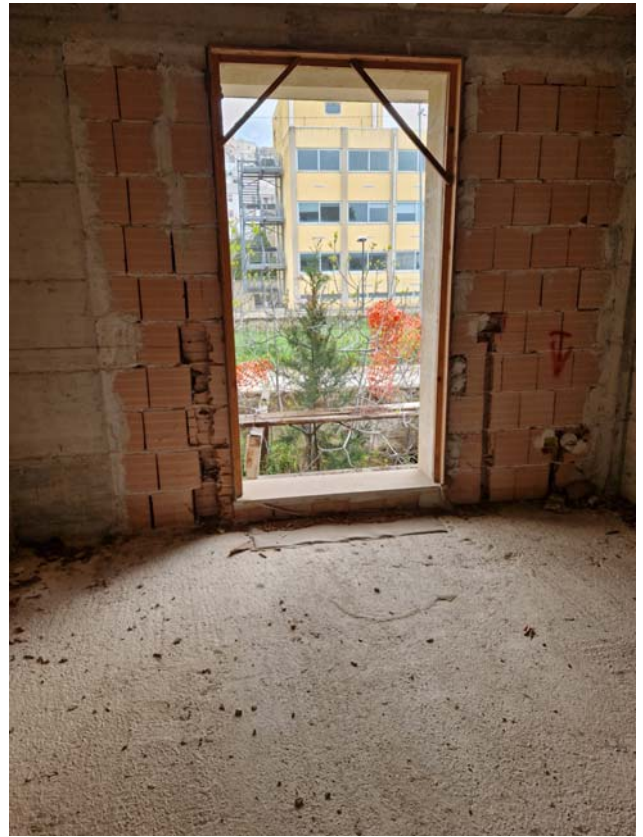




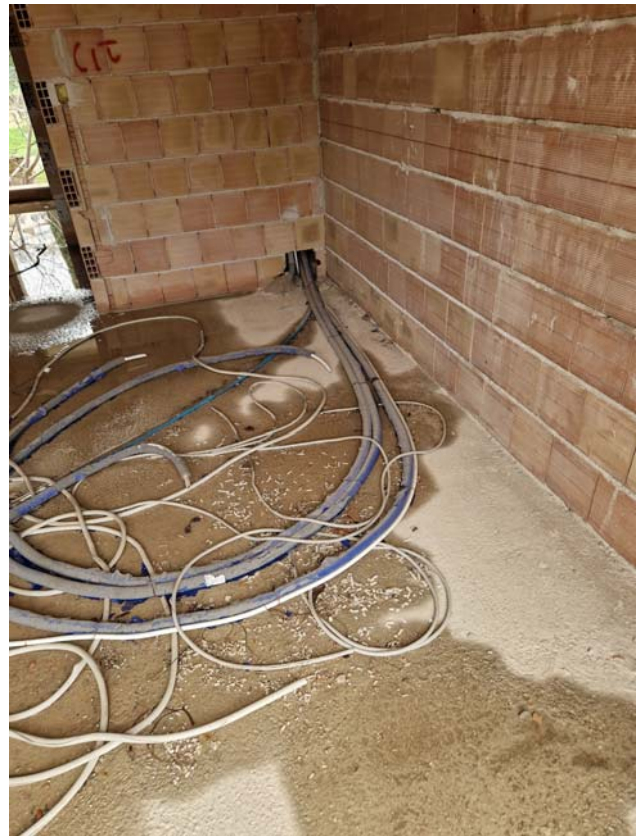


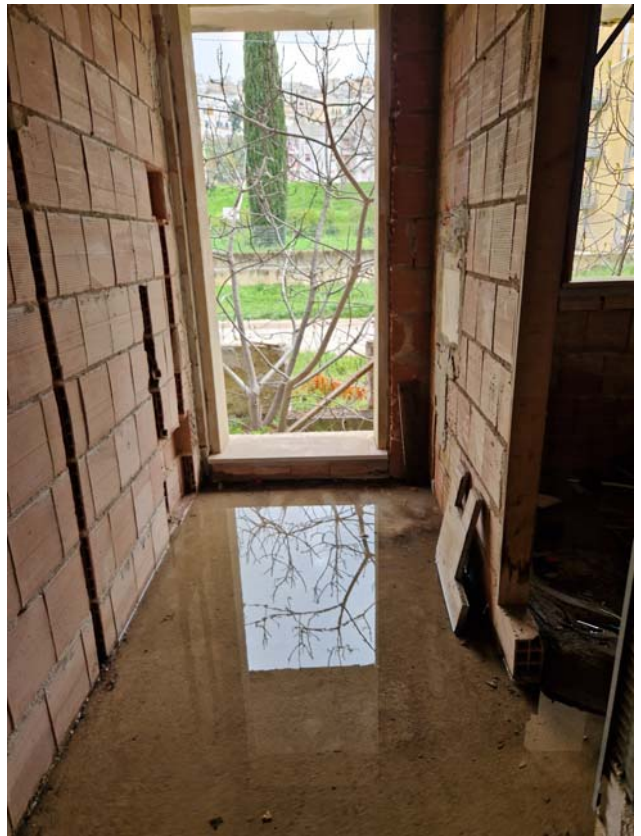
PIANO TERRA-RIALZATO

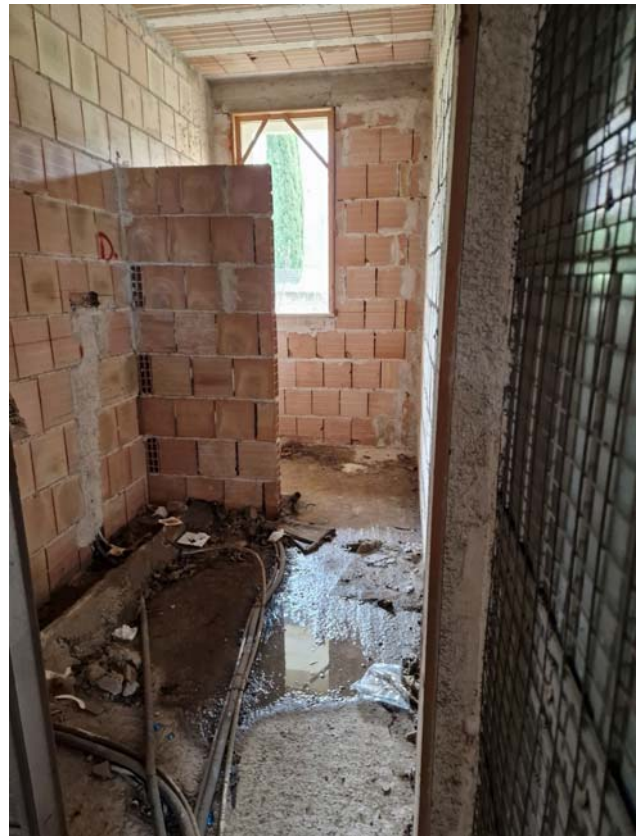




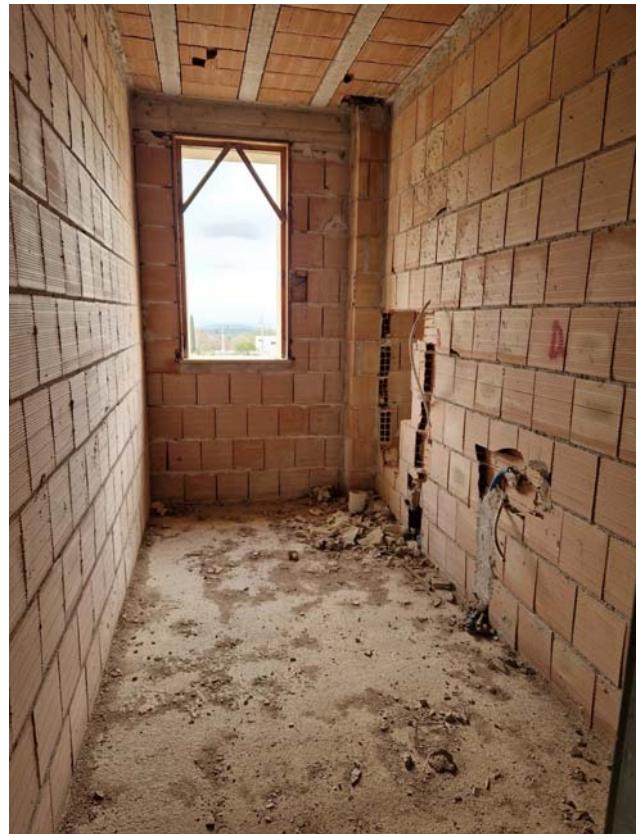




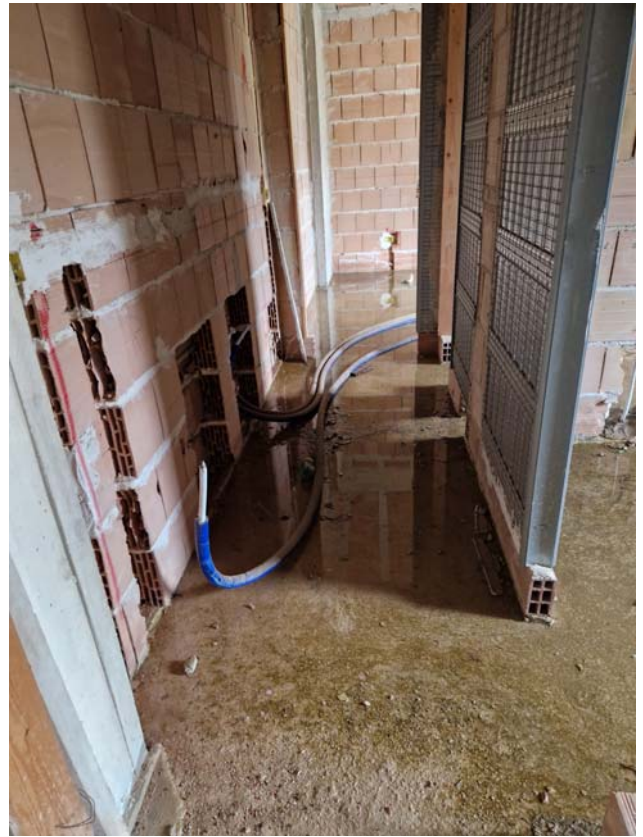




PIANO PRIMO

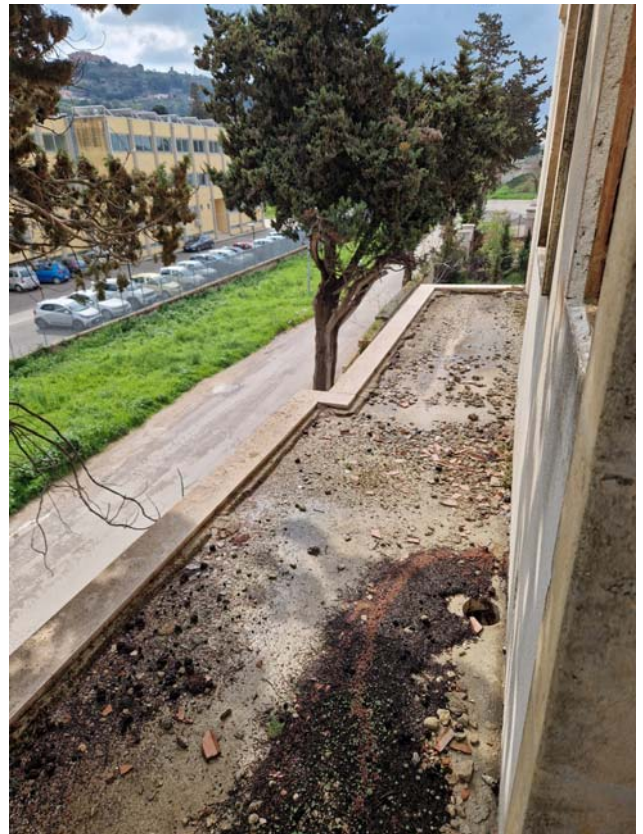
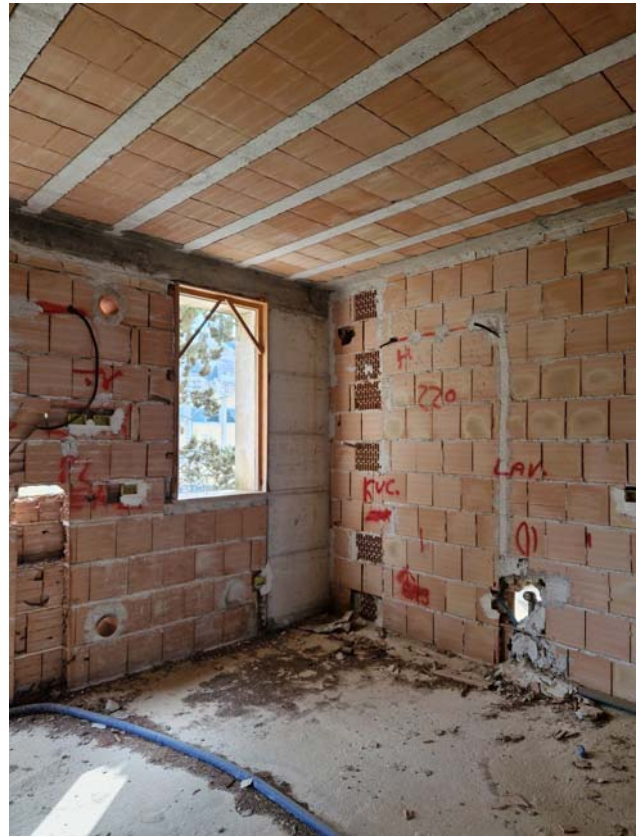




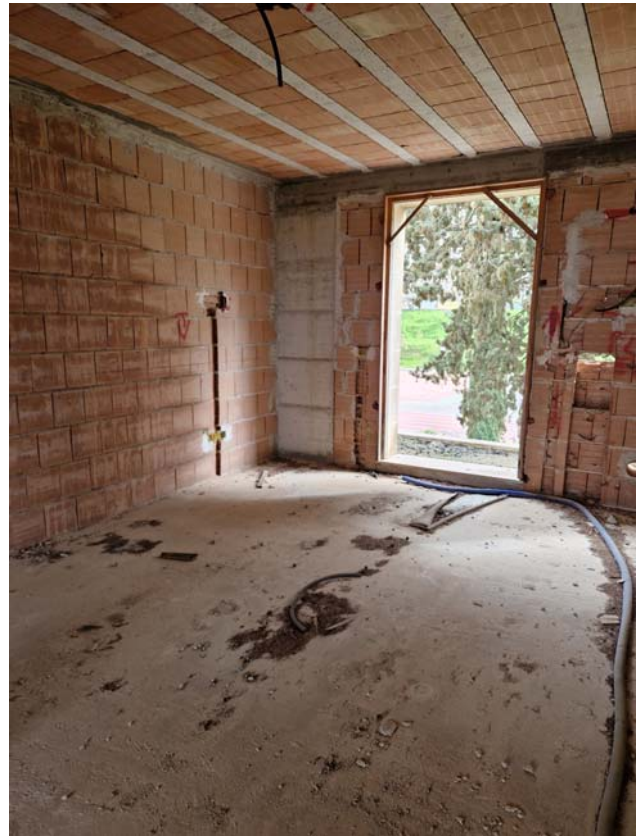




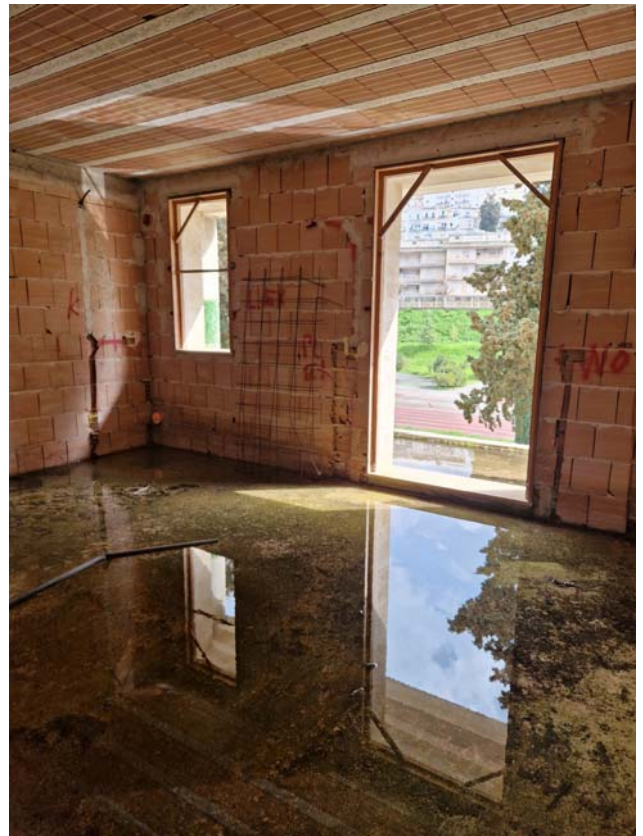
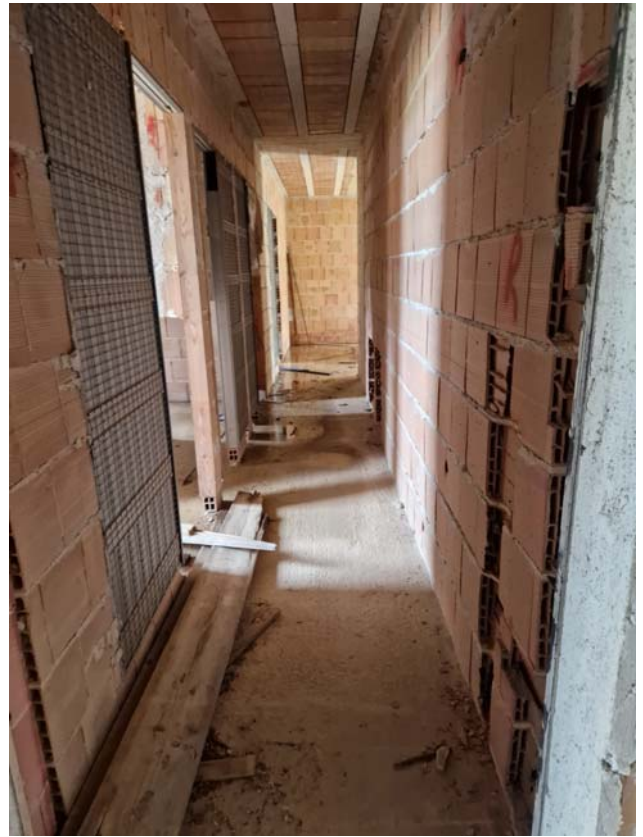
PIANO SECONDO

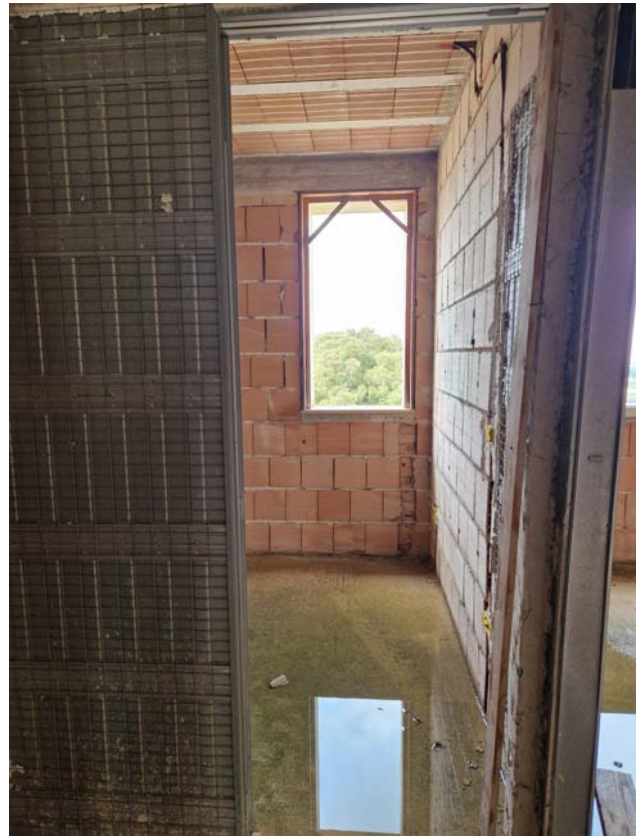












PIANO TERZO – SOTTOTETTO

