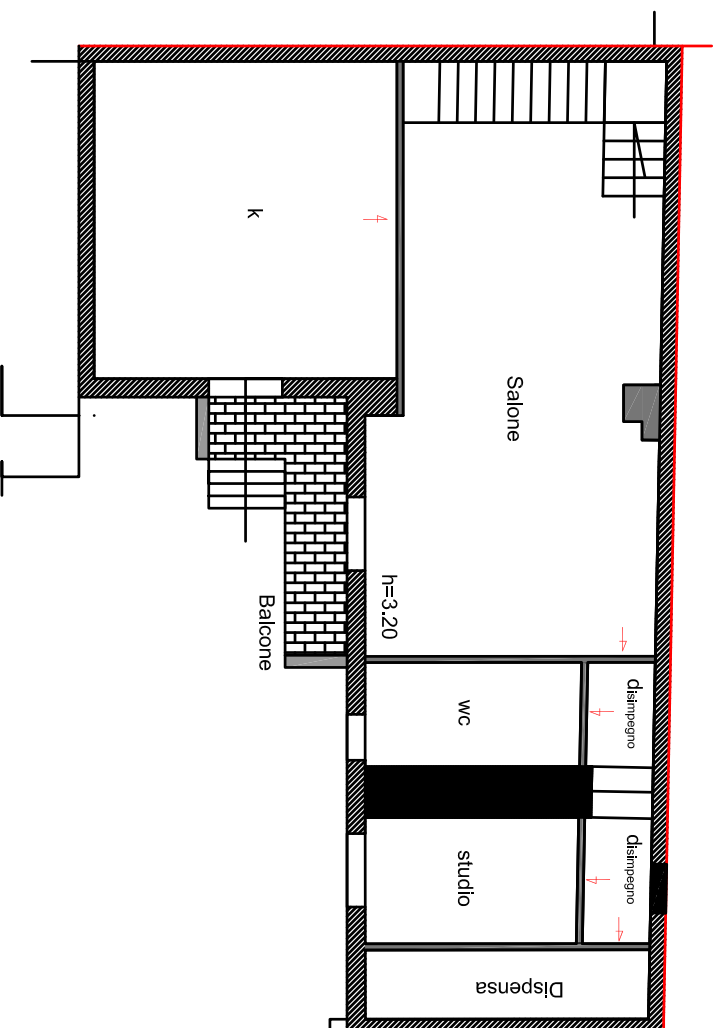
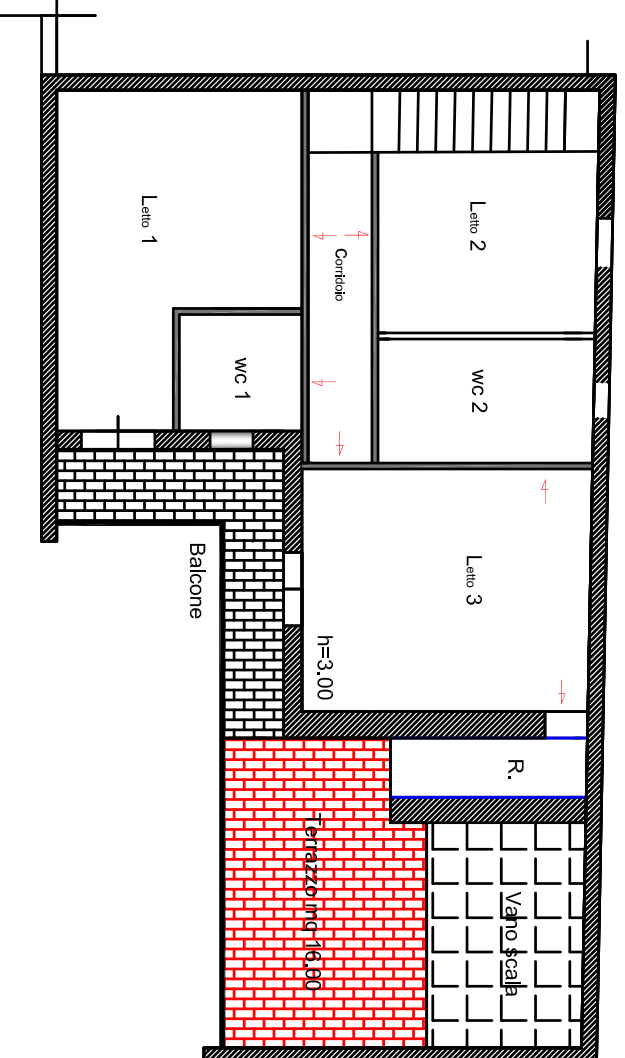


## Piano terra



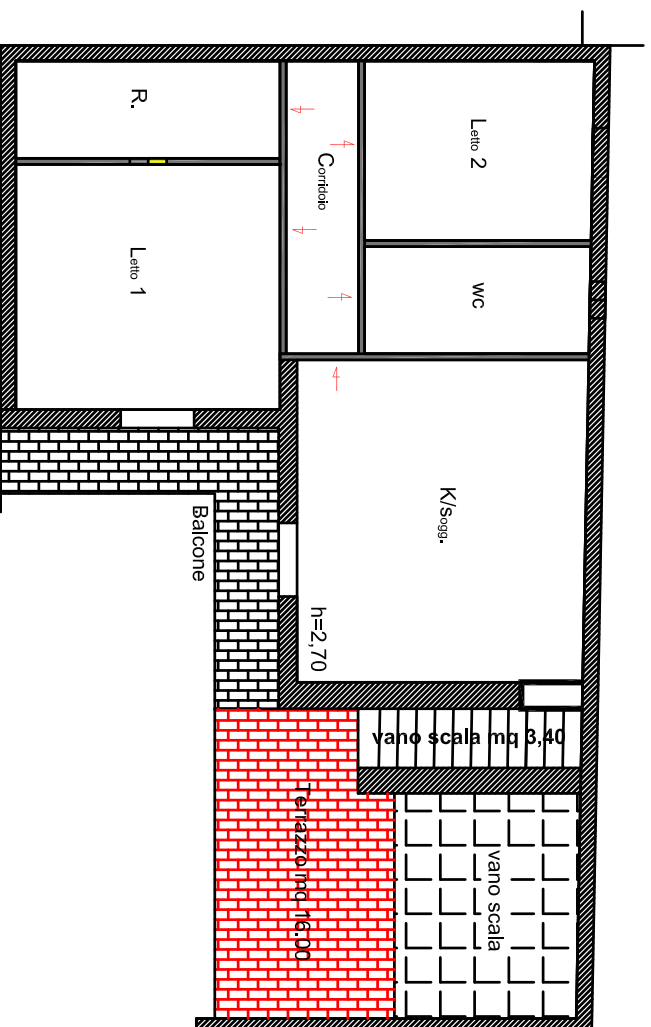
K	MQ 25,58
Salone	MQ 42,84
Disimpegnno	MQ 04,97
wc	MQ 05,97
Studio	MQ 07,13
Dispensa	MQ 05,23
<b>Totale S.calpestabile</b>	<b>MQ 91,72</b>
<b>Totale S.netta</b>	<b>MQ 97,09</b>
<b>Totale S.E.L</b>	<b>MQ 107,16</b>
<b>Totale S.balcone</b>	<b>MQ 05,51</b>
<b>Totale Volume</b>	<b>MC 369,70</b>

## piano primo



Corridoio	MQ 06,32
Letto 1	MQ 18,00
Letto 2	MQ 10,56
wc 1	MQ 03,80
Letto 3	MQ 18,66
wc 2	MQ 07,11
Rip.	MQ 03,00
<b>Totale S.calpestabile</b>	<b>MQ 67,45</b>
<b>Totale S.netta</b>	<b>MQ 75,00</b>
<b>Totale S.E.L</b>	<b>MQ 78,95</b>
<b>Totale S.Balcone</b>	<b>MQ 08,00</b>
<b>Totale Volume</b>	<b>MC 272,00</b>

## piano secondo



K/Sogg.	MQ 24,77
Corr.	MQ 05,64
Letto 1	MQ 17,24
Letto 2	MQ 10,90
Wc	MQ 06,43
Ripos.	MQ 06,85
<b>Totale S.calpestabile</b>	<b>MQ 71,83</b>
Totale S.netta	MQ 74,10
Totale S.E.L	MQ 84,10
Totale S.Balcone	MQ 08,00
<b>Totale Volume</b>	<b>MC 244,00</b>