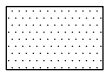


ELABORATO GRAFICO

sc. 1:100

Comune di Celano (AQ)

Fg.18 mappale n.483 sub.20

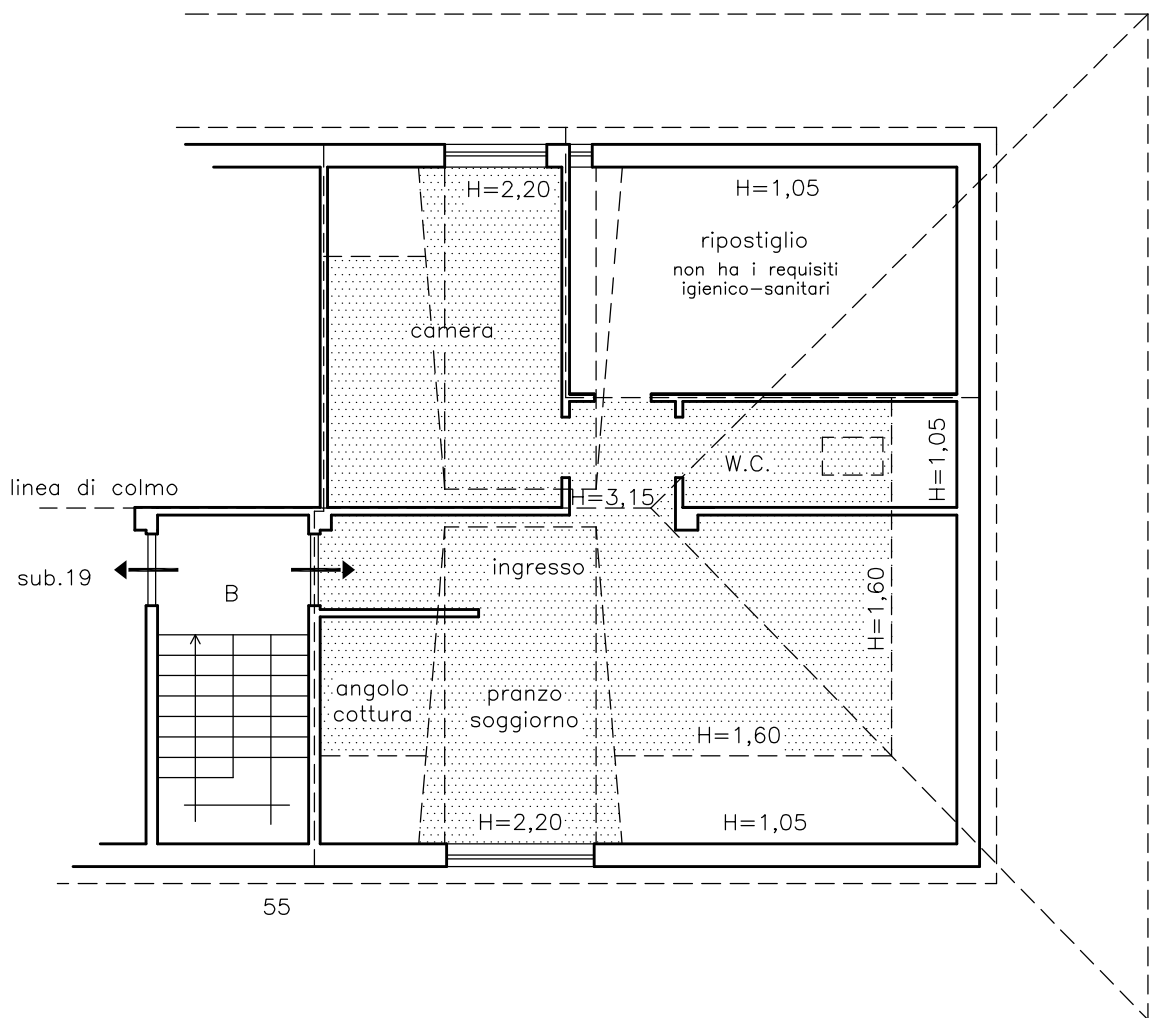


Superficie residenziale :
lorda 48,61 mq.; netta 45,25 mq.

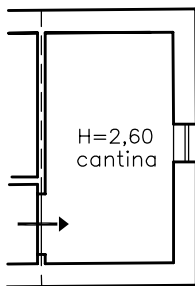
Superficie accessoria :
lorda 34,81 mq.; netta 27,59 mq.

Superficie cantina :
lorda 7,51 mq.; netta 5,13 mq.

LOTTO N.8



PIANO QUARTO sc. 1:100



PIANO TERRA sc. 1:100

Proc. E.I. n.73/2024 Tribunale di Avezzano
il C.T.U.

Ing. Donato Antonio Di Biase