

Tribunale di Torino

CAUSA DI DIVISIONE N. 16070/2021

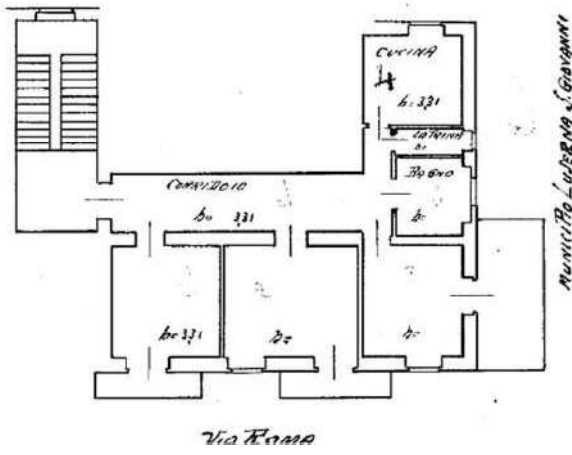
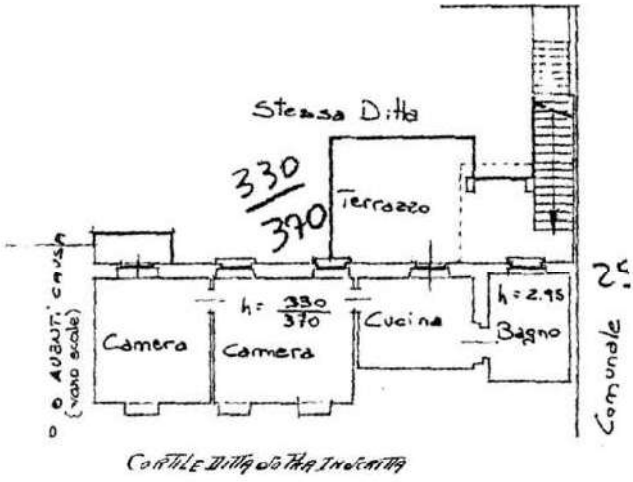
DOCUMENTAZIONE FOTOGRAFICA IMMOBILI VIA ROMA 21 LUSERNA SAN GIOVANNI

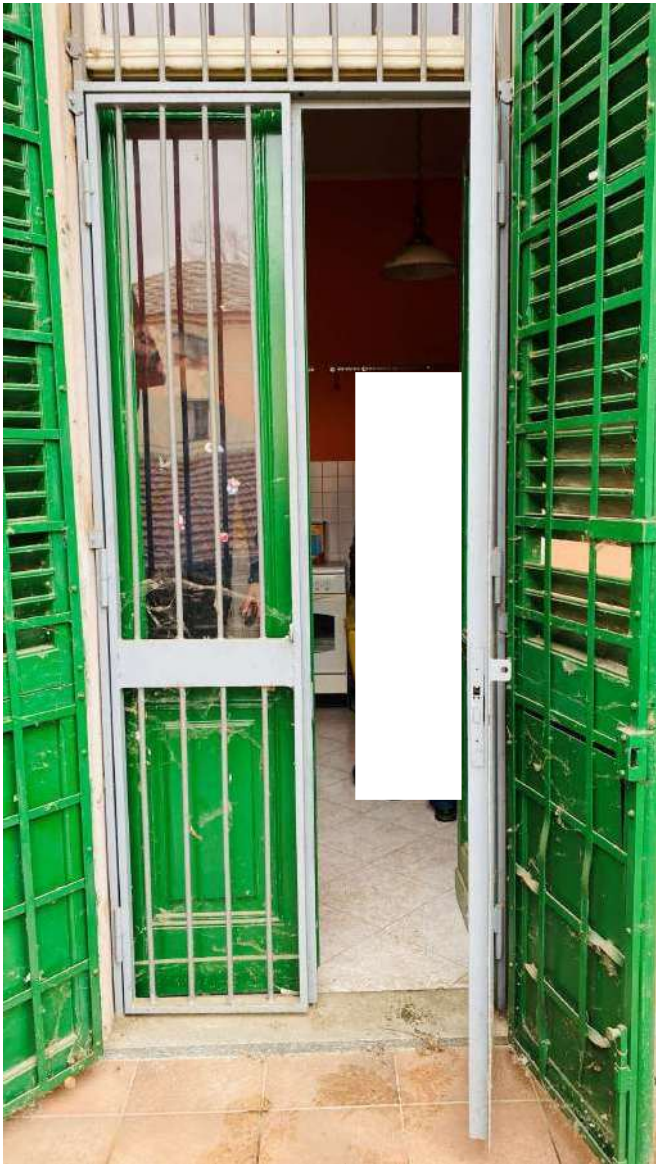


LUSERNA S.GIOVANNI
Via Roma 21

Foglio 13 - Particella 251 - Subalterno 6 >

< Foglio 13 - Particella 251 - Subalterno 8 >





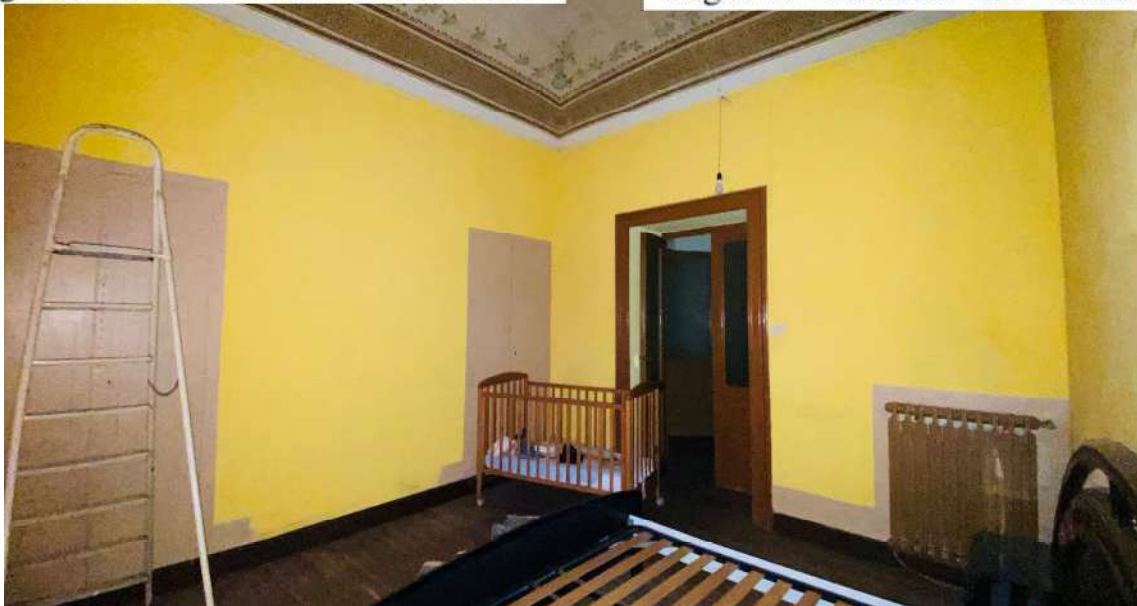


Foglio 13 - Particella 251 - Subalterno 6 >



Foglio 13 - Particella 251 - Subalterno 8 >



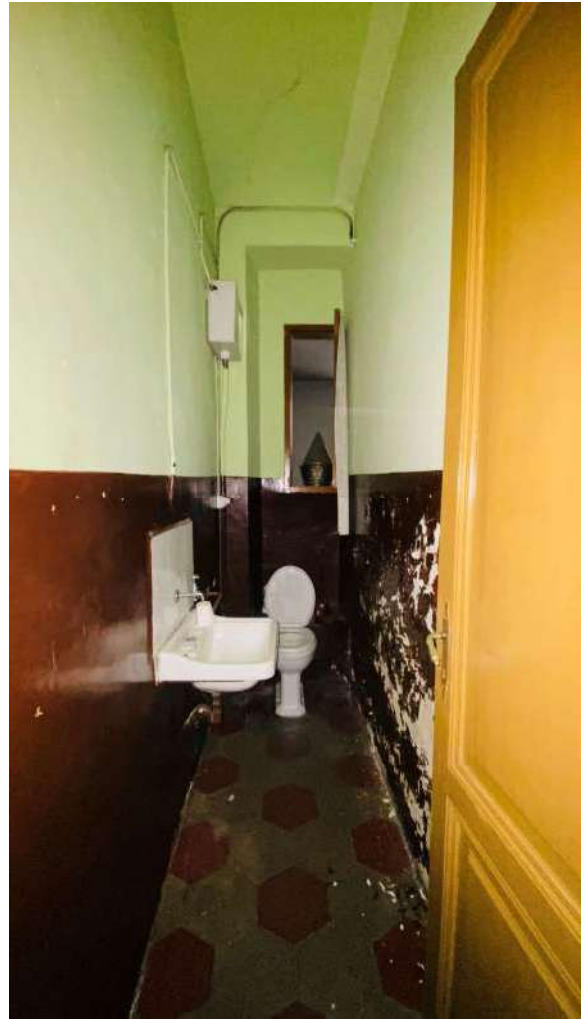




Foglio 13 - Particella 251 - Subalterno 6 >

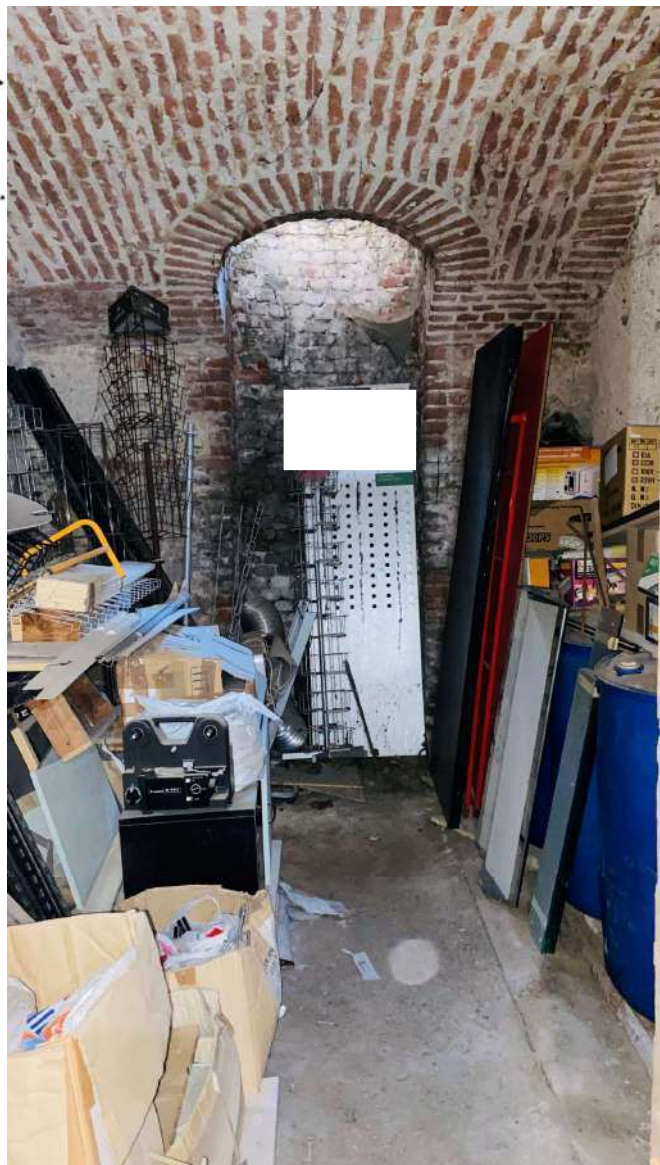
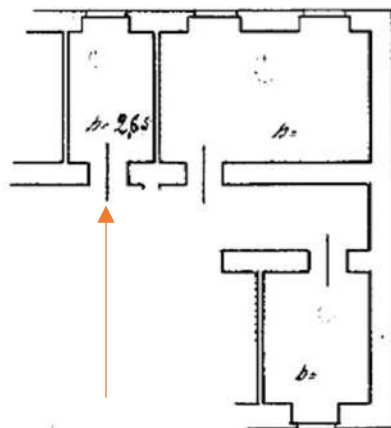


Foglio 13 - Particella 251 - Subalterno 8 >

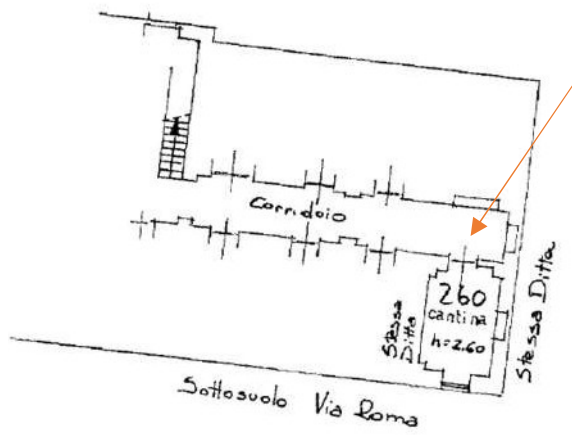


Foglio 13 - Particella 251 - Subalterno 6 >

Sotterraneo

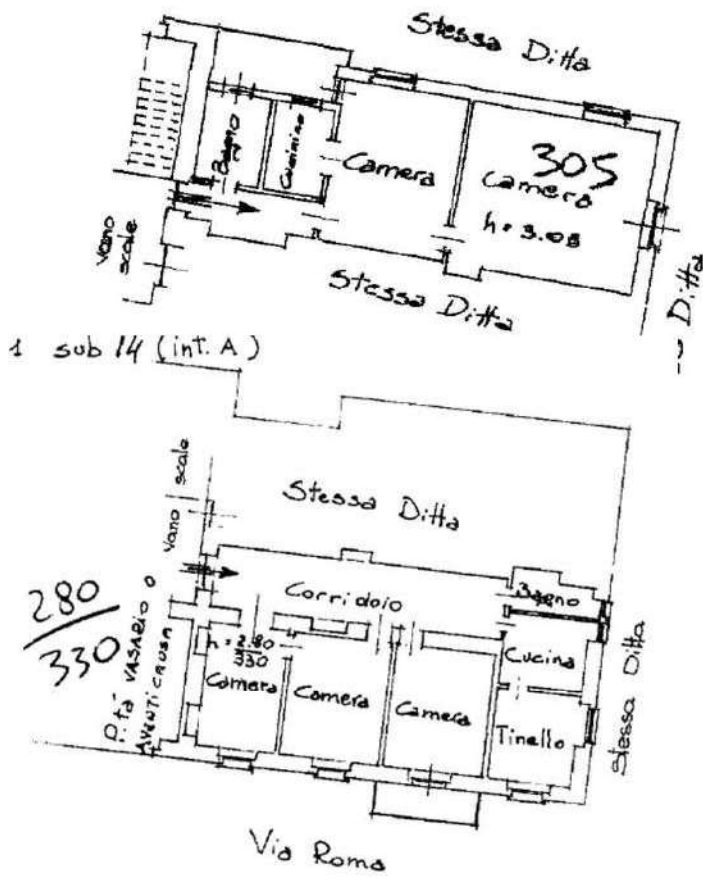


Foglio 13 - Particella 251 - Subalterno 8 >



LUSERNA S.GIOVANNI
Via Roma 21

Foglio 13 - Particella 251 - Subalterno 14 >
: Foglio 14 - Particella 251 - Subalterno 15 >



Foglio 13 - Particella 251 - Subalterno 14 >
Foglio 14 - Particella 251 - Subalterno 15 >



Foglio 13 - Particella 251 - Subalterno 14 >
Foglio 14 - Particella 251 - Subalterno 15 >



Foglio 13 - Particella 251 - Subalterno 14 >
Foglio 14 - Particella 251 - Subalterno 15 >



Foglio 13 - Particella 251 - Subalterno 14 >
Foglio 14 - Particella 251 - Subalterno 15 >

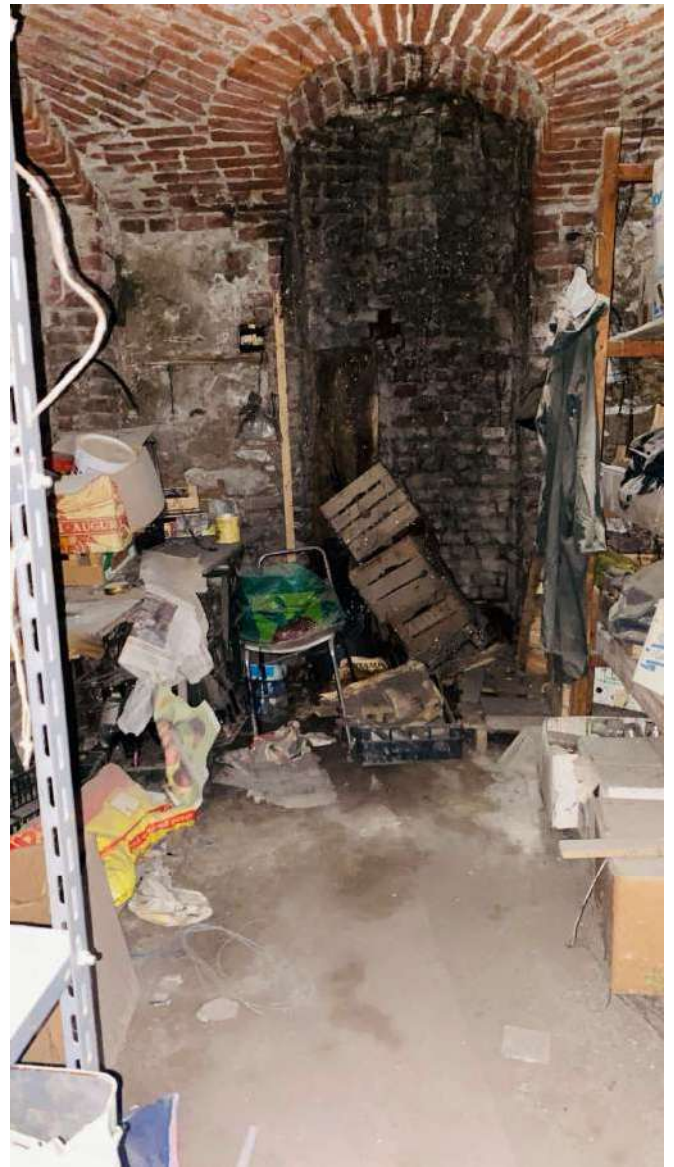
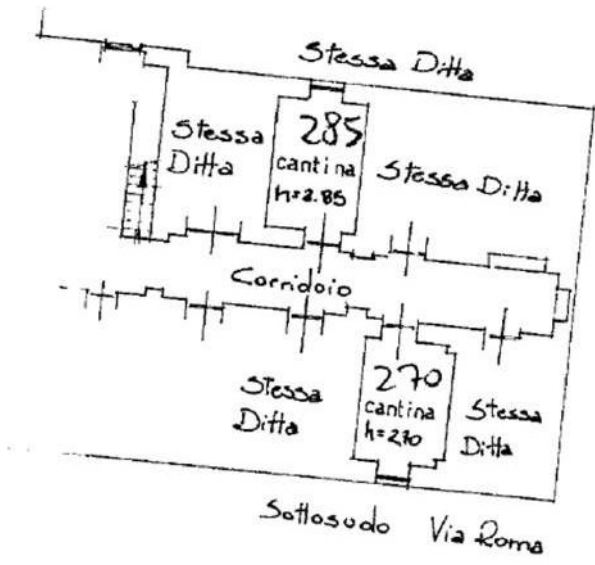


Foglio 13 - Particella 251 - Subalterno 14 >
Foglio 14 - Particella 251 - Subalterno 15 >



LUSERNA S.GIOVANNI
Via Roma 21

Foglio 13 - Particella 251 - Subalterno 14 >



LUSERNA S.GIOVANNI
Via Gianavello 12

Foglio 13 - Particella 923 - Subaltemo >



PIANO TER



