

all. 10

**Fotografie esterne ed interne del bene,
nonché la relativa planimetria**



Foto aerea - ubicazione dell'immobile



Foto esterne



Vista facciata SUD da piazza Garibaldi



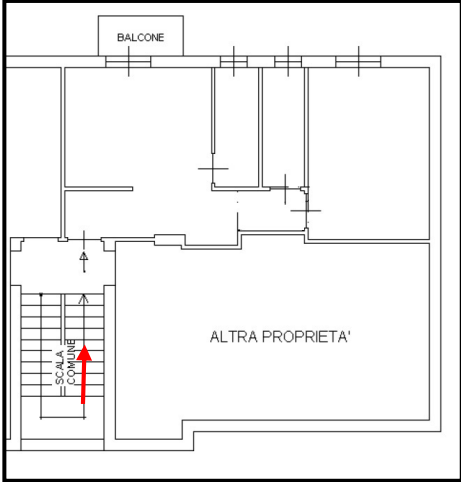


Vista facciata EST



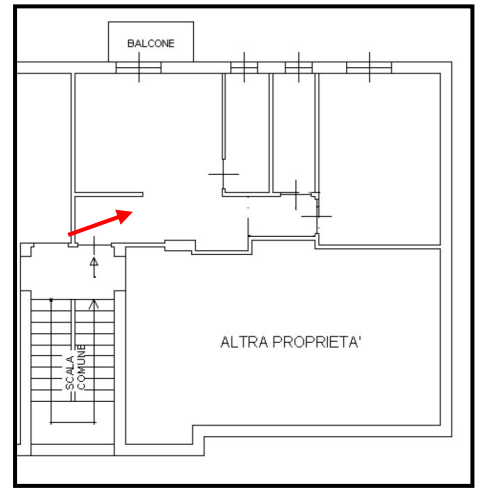
Vista facciata NORD

Foto interne

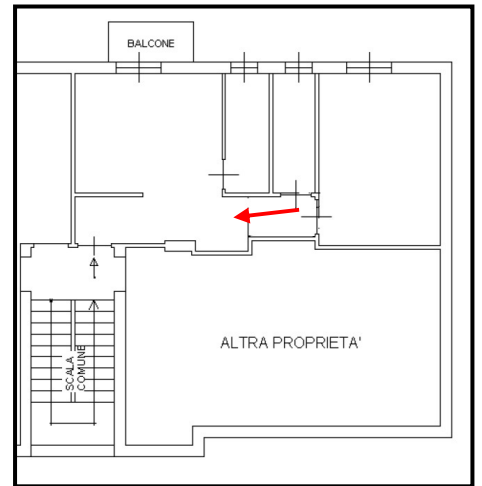


Scale di accesso al secondo piano

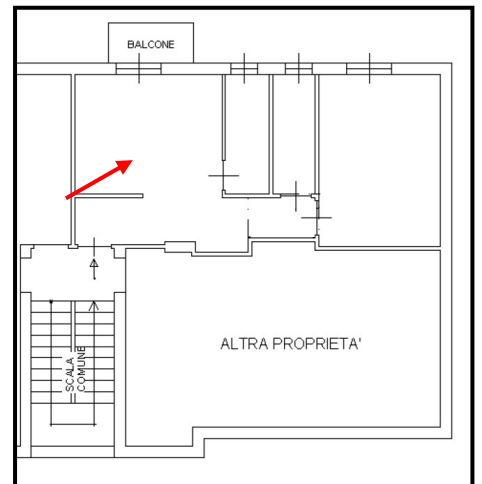




Ingresso

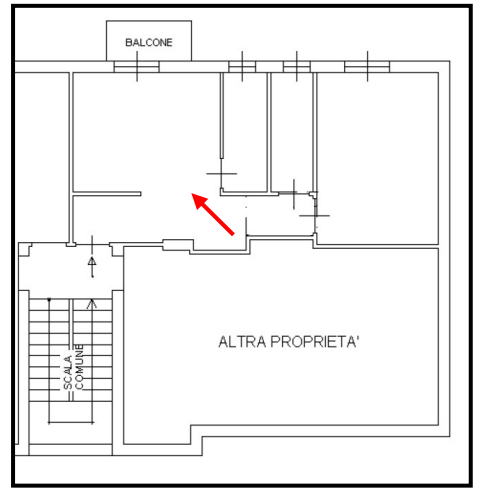


Ingresso

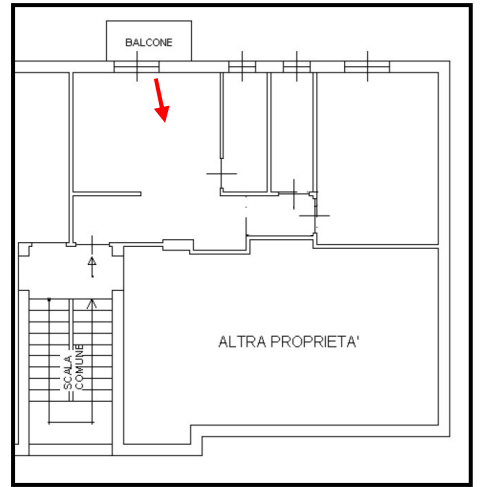


Soggiorno

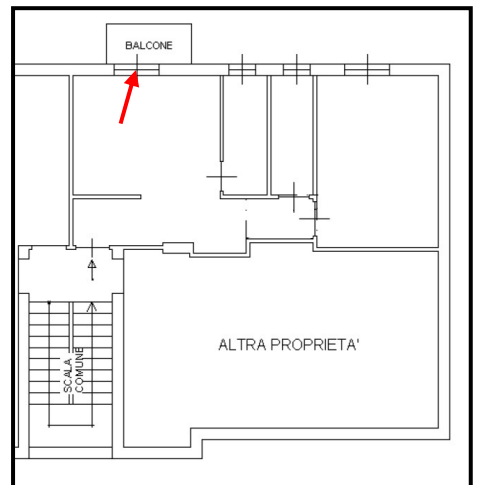




Soggiorno

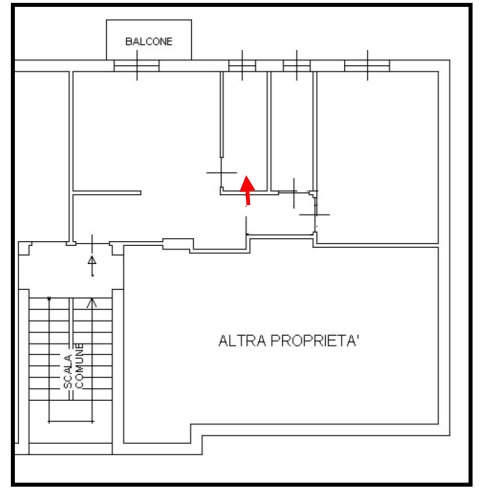


Soggiorno

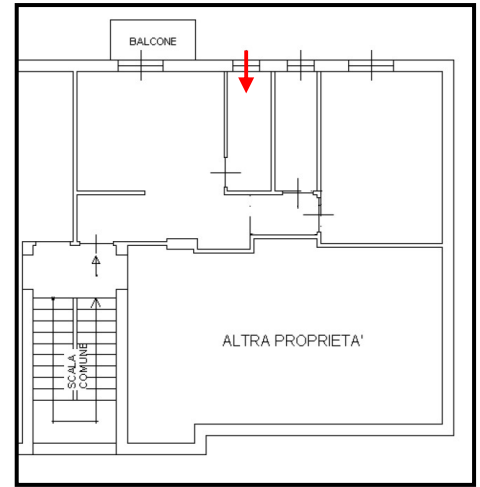


Balcone

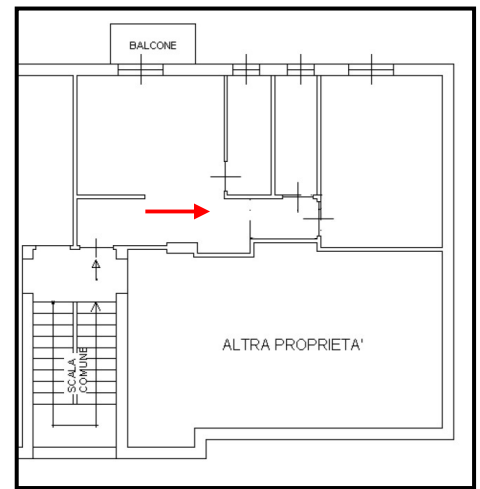




Cucina

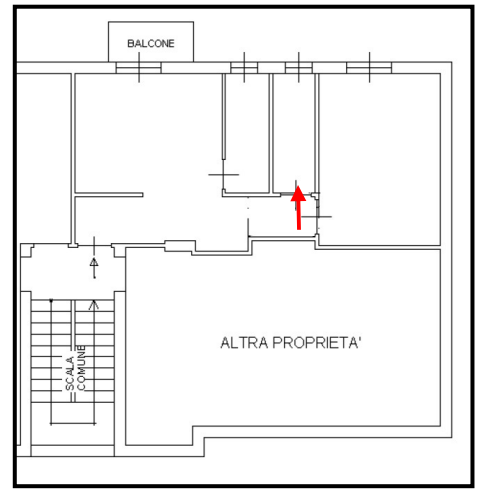


Cucina

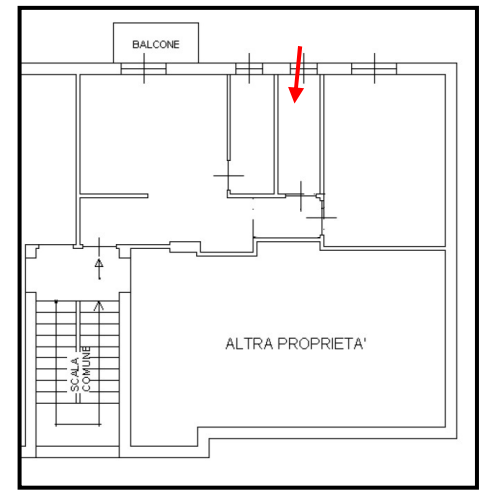


Disimpegno

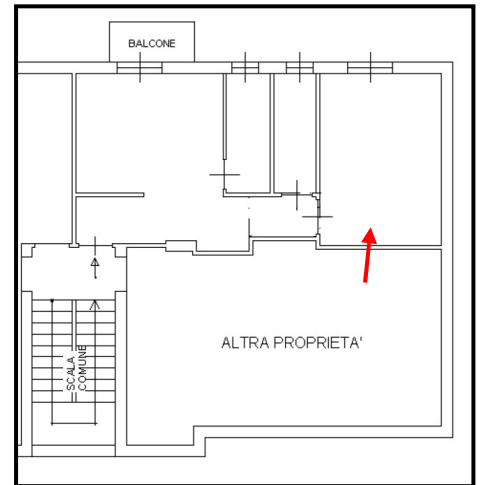




Bagno

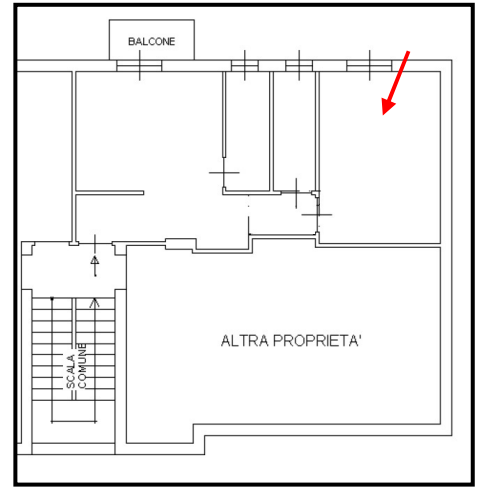


Bagno



Camera





Camera



Vano scale ostruito per accedere al solaio

