

COMUNE DI FROSINONE
06-05-03 504/502
PROVINCIA DI ROMA

REGIONE LAZIO

Assessorato all'Urbanistica

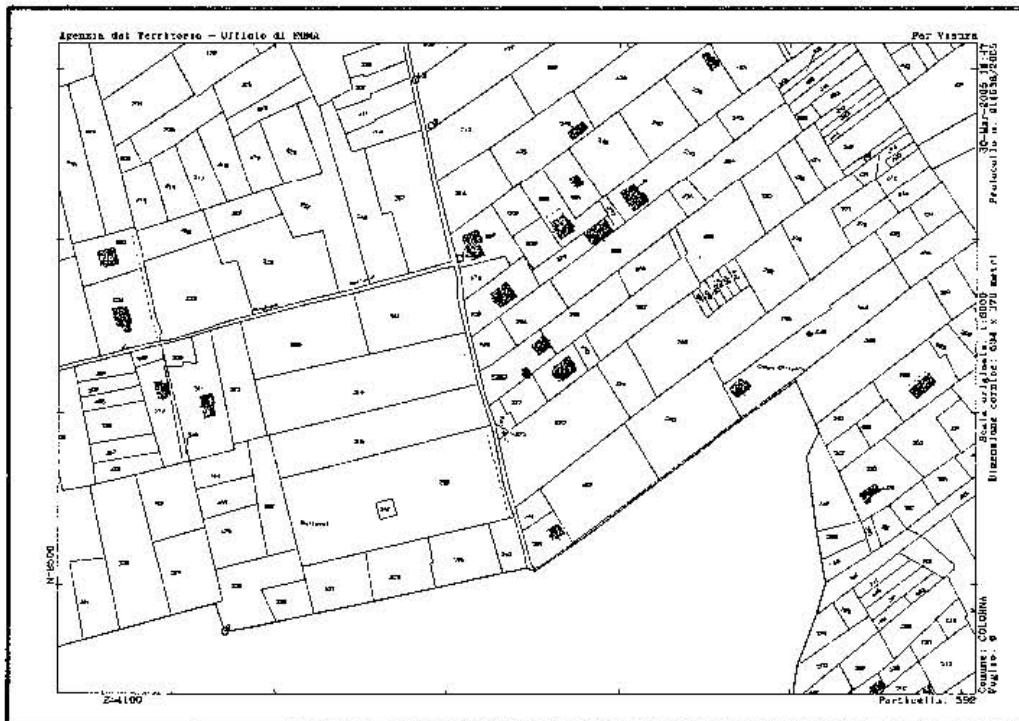
Ufficio Tutela Ambientale

OGGETTO: RICHIESTA NULLA OSTA PER UN PICCOLO MANUFATTO OGGETTO DI DOMANDA DI CONDONO EDILIZIO AI SENSI DELLA L. 326/03

SITUAZIONE ANTE / POST OPERAM

TAVOLA UNICA

RAPP.: 1:200, 1:100



STRALCIO CATASTALE

FOGLIO 6

PARTICELLA 592

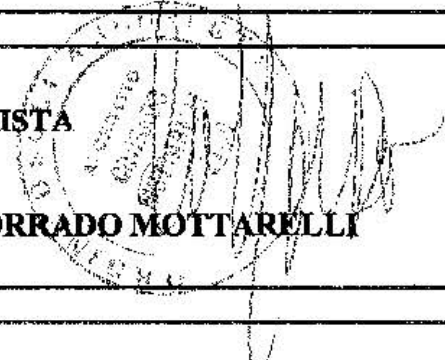
SUB 502

COMMITTENTE



PROGETTISTA

ARCH. CORRADO MOTTARELLI

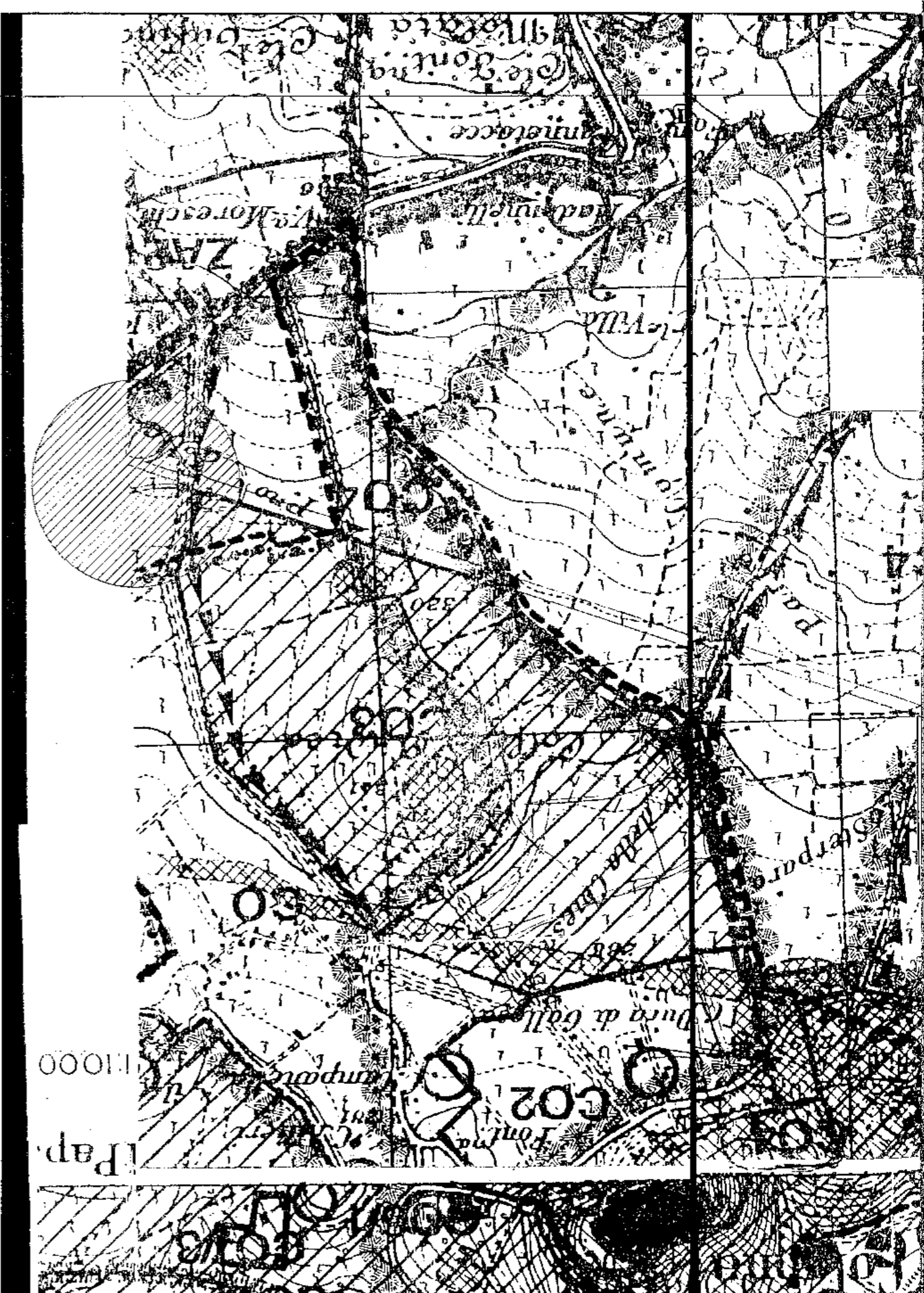
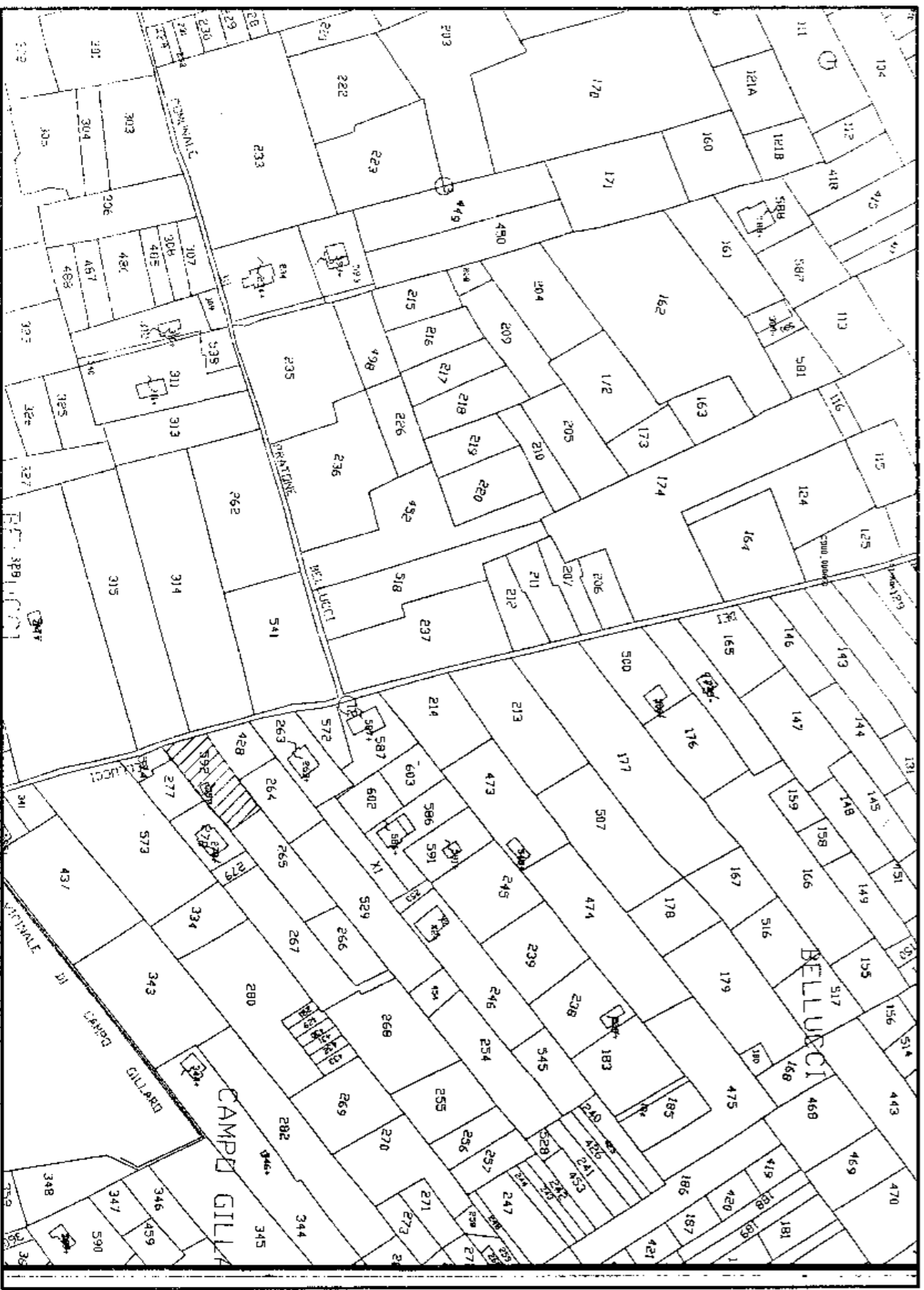


DATA: 31/05/2005

RIFERIMENTO pos. N° _____

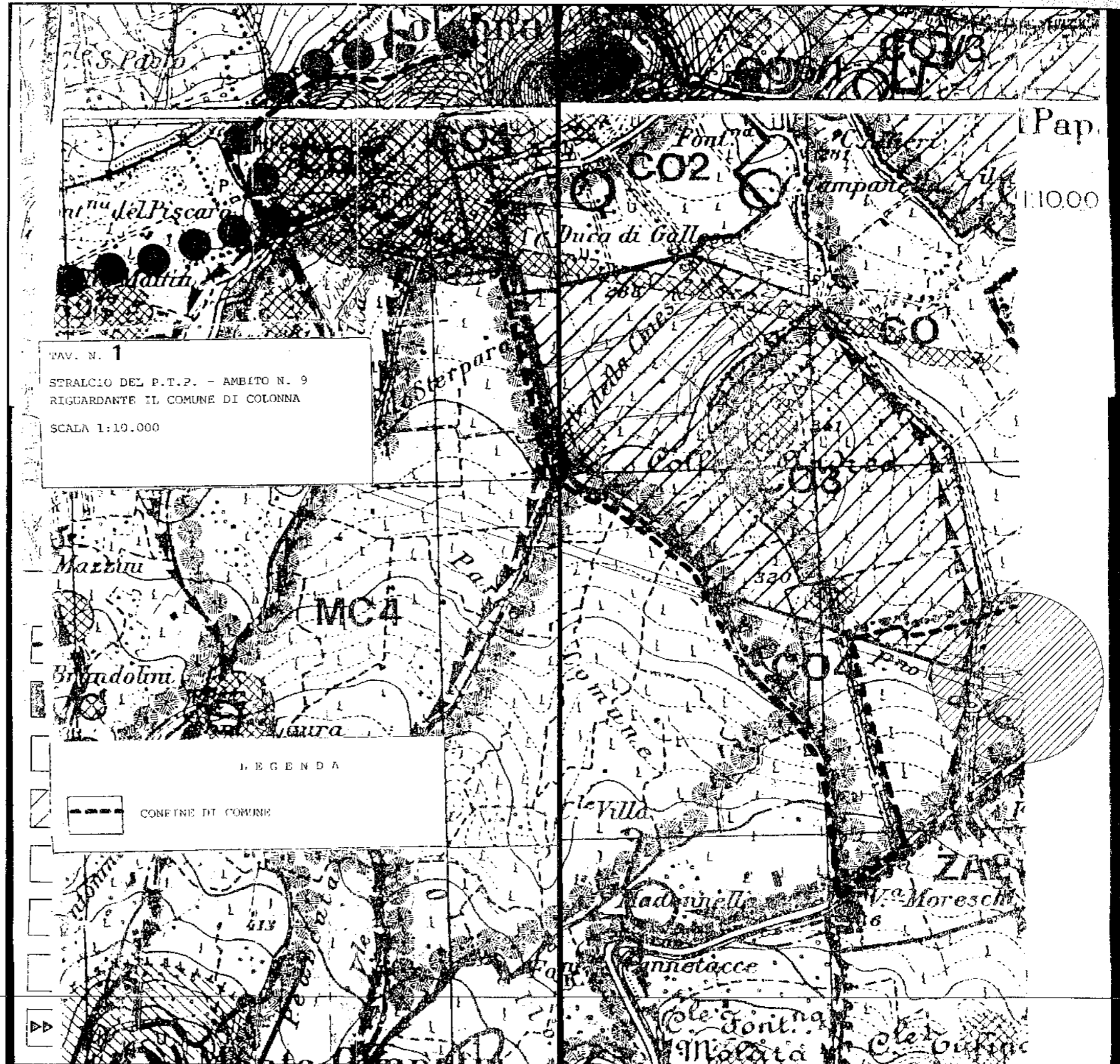
E' vietata la riproduzione di questo disegno senza la preventiva approvazione dello studio tecnico

FOGLIO CATASTALE N.6
Via dei Bellucci snc - particella 592



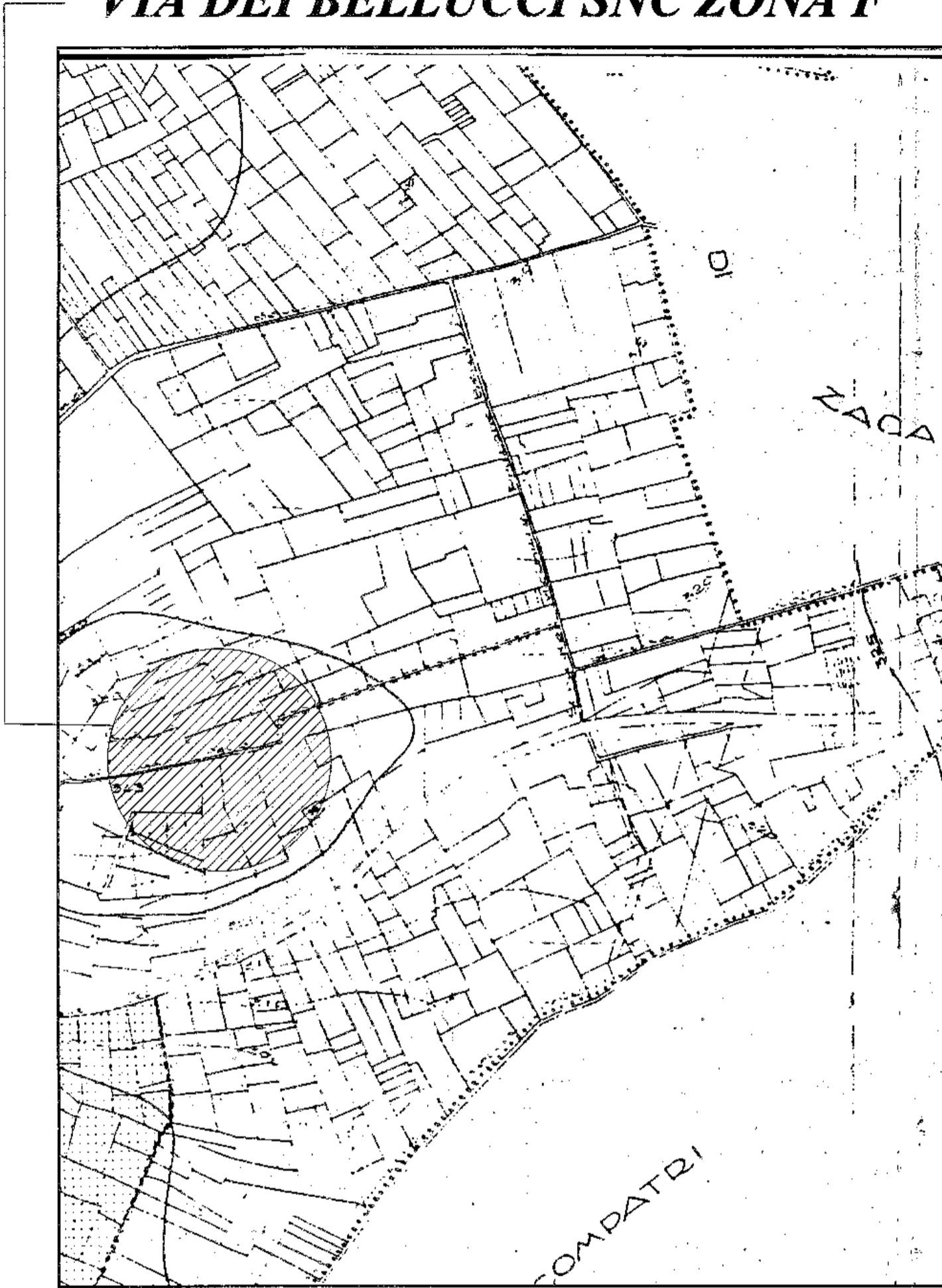
**STRALCIO P. T. P.
(TAVOLE E1-E3)**

**Via dei Bellucci snc
ZONA CO4**



STRALCIO P. R. G. (COMUNE COLONNA)

VIA DEI BELLUCCI SNC ZONA F

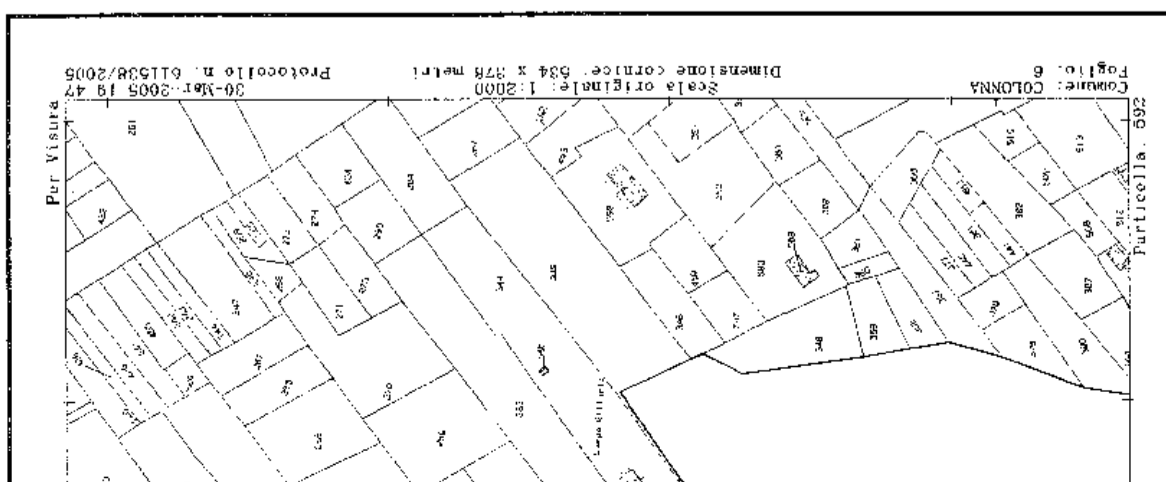


**PLANIMETRIA
RISALEN**

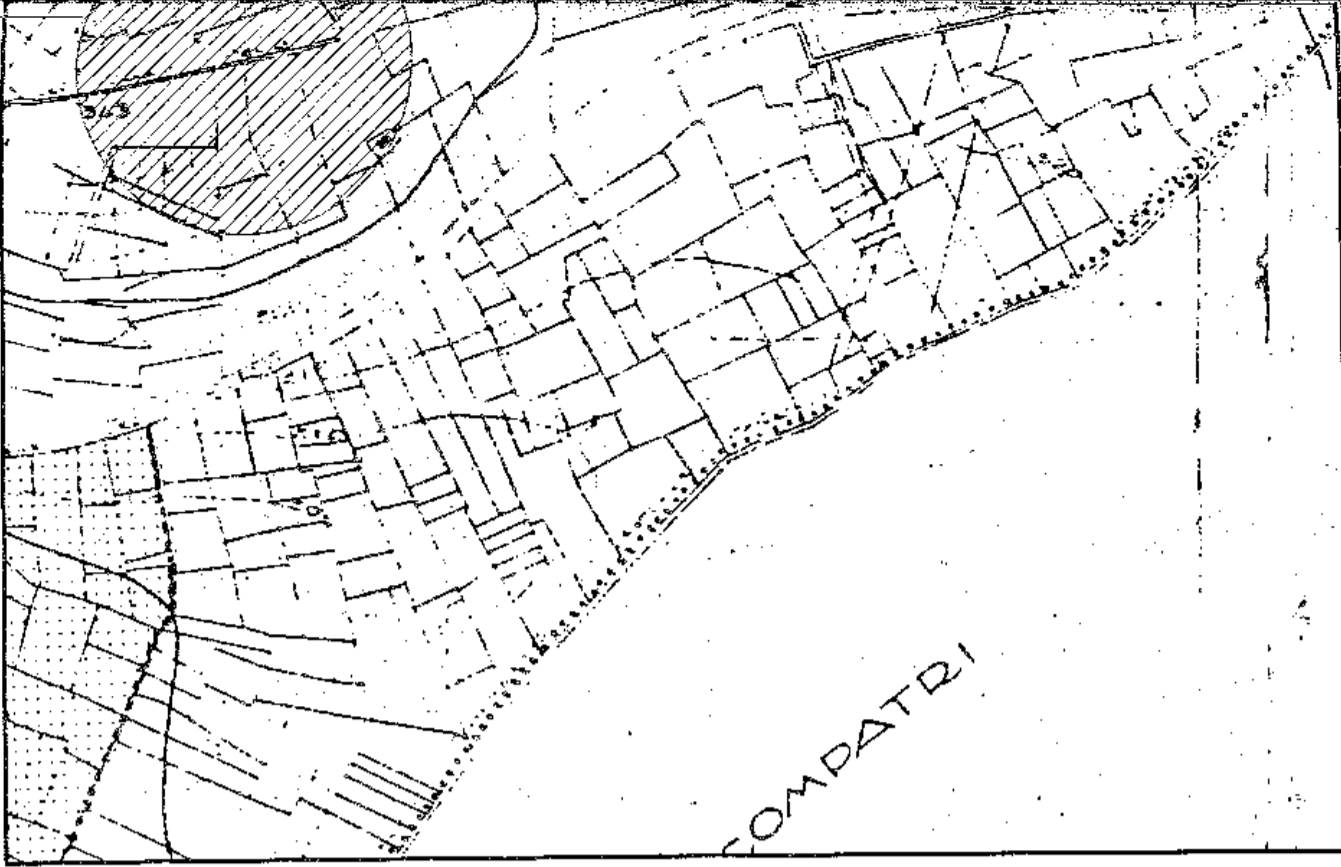
RAP

FOGLIO CATASTALE N.6

**Via dei Bellucci snc - particella 592 - sub. 502
inserimento in mappa del 27.09.2004**



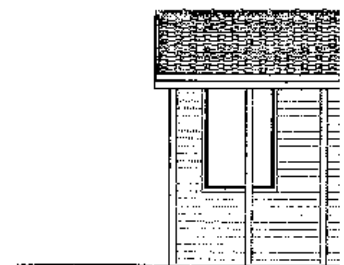
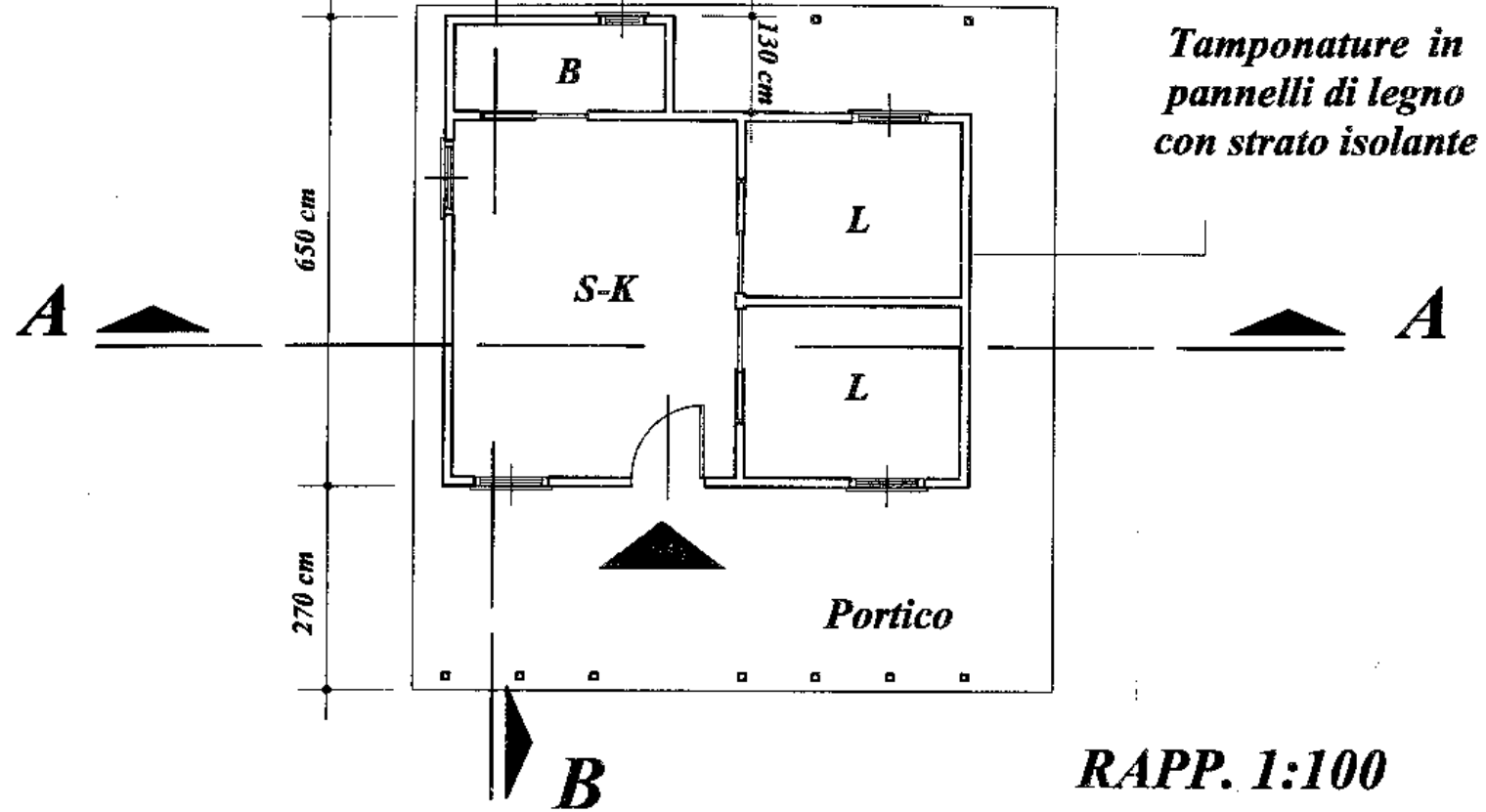
A 



FOGLIO CATASTALE N.6

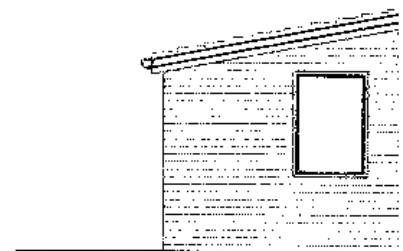
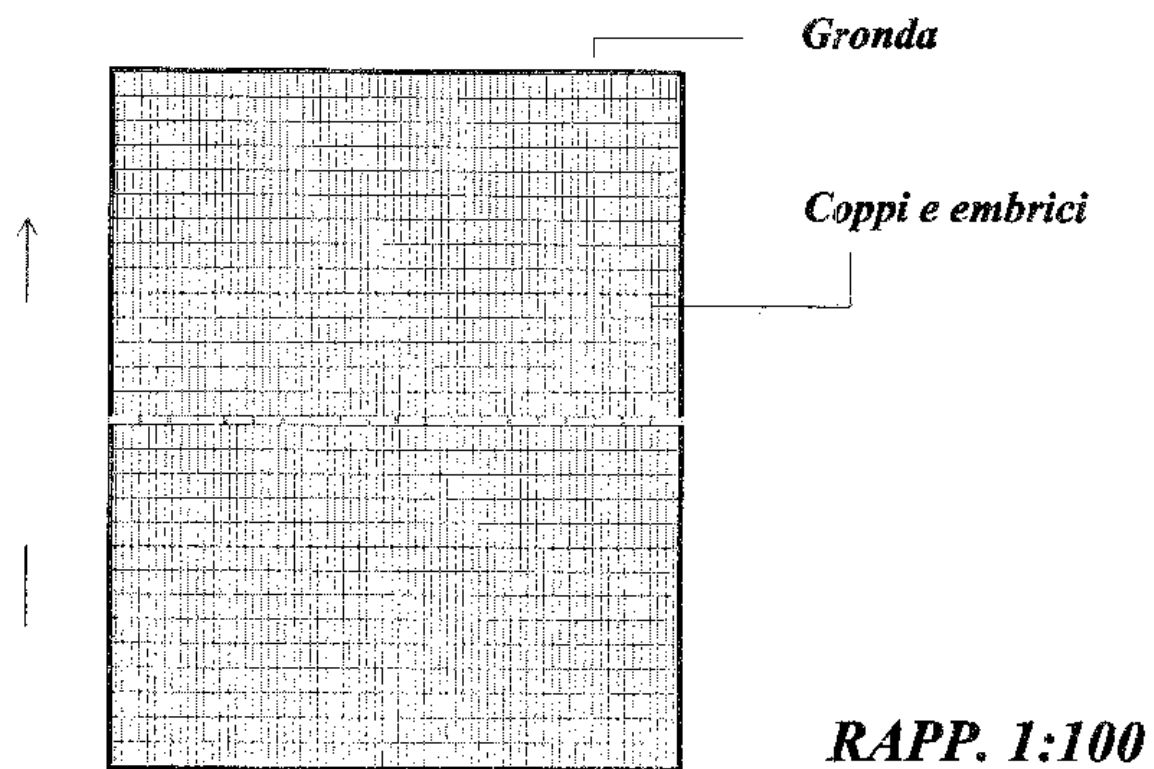
***Via dei Bellucci snc - particella 592 - sub. 502
inserimento in mappa del 27.09.2004***

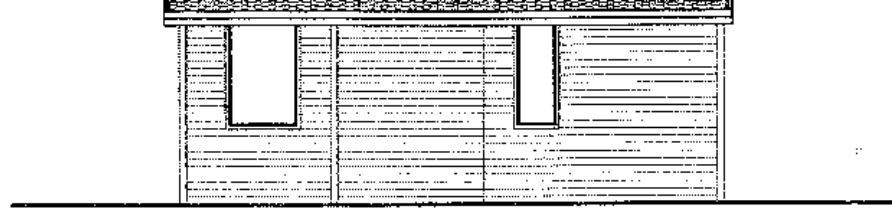




PIANTA PIANO COPERTURA

PROSP.

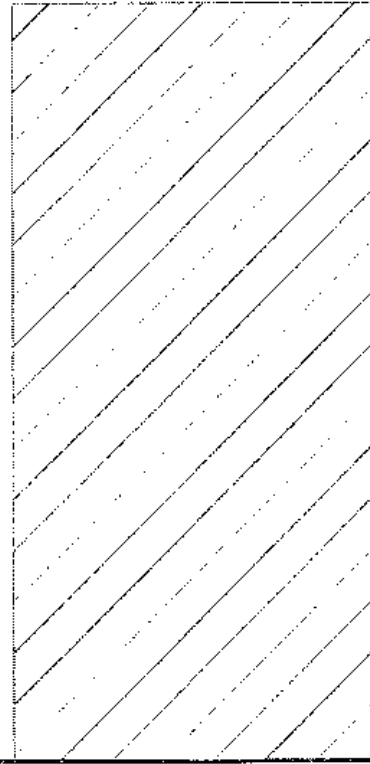
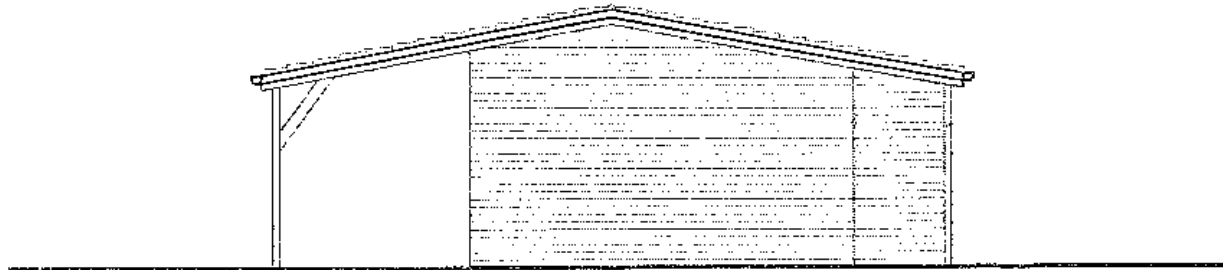




RAPP. 1:100

RAPP. 1:100

PROSPETTO SUD

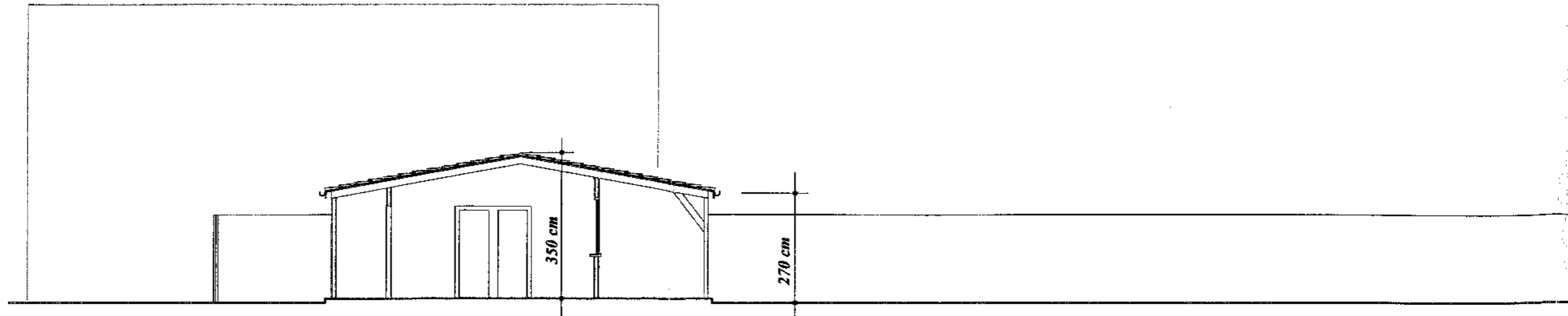


RAPP. 1:100

RAPP. 1:100

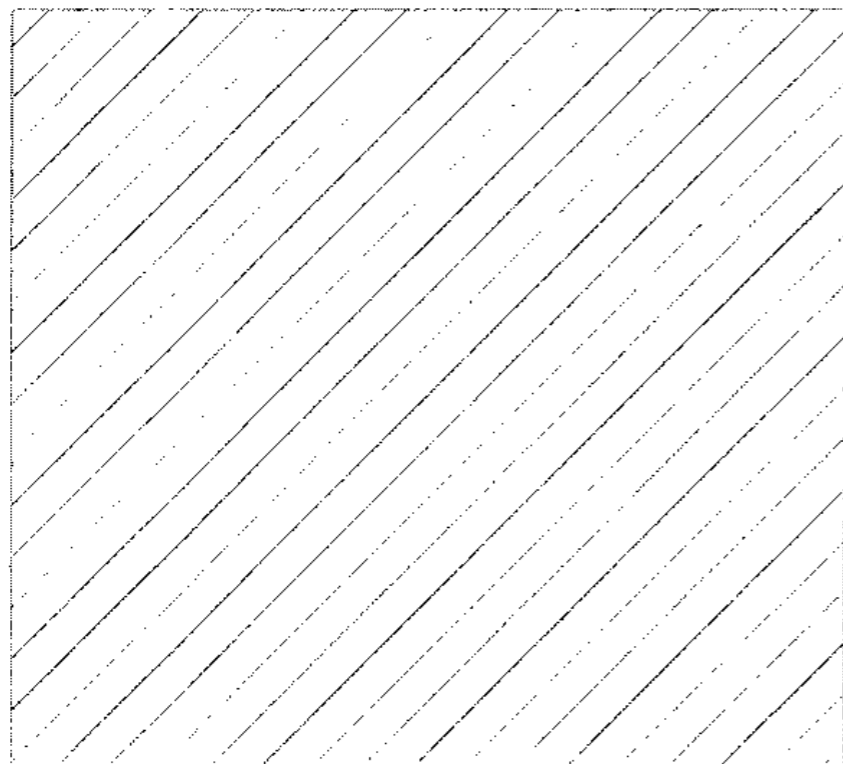
*Edificio di due piani confinante
sul lato sud*

SEZIONE A-A



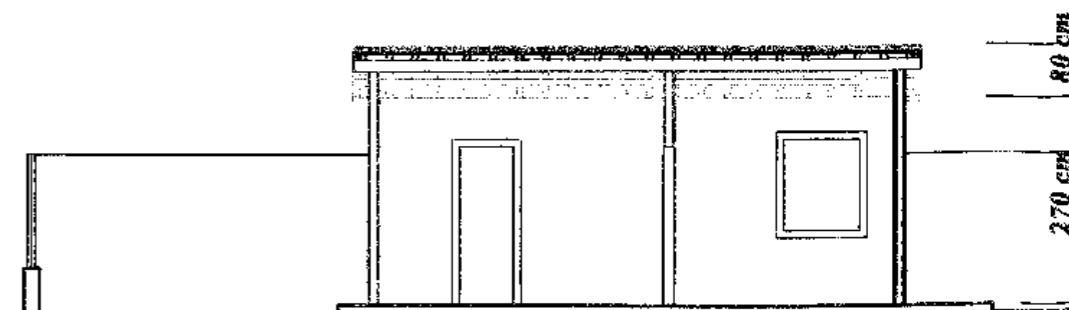
PP. 1:100

SEZIONE B-B



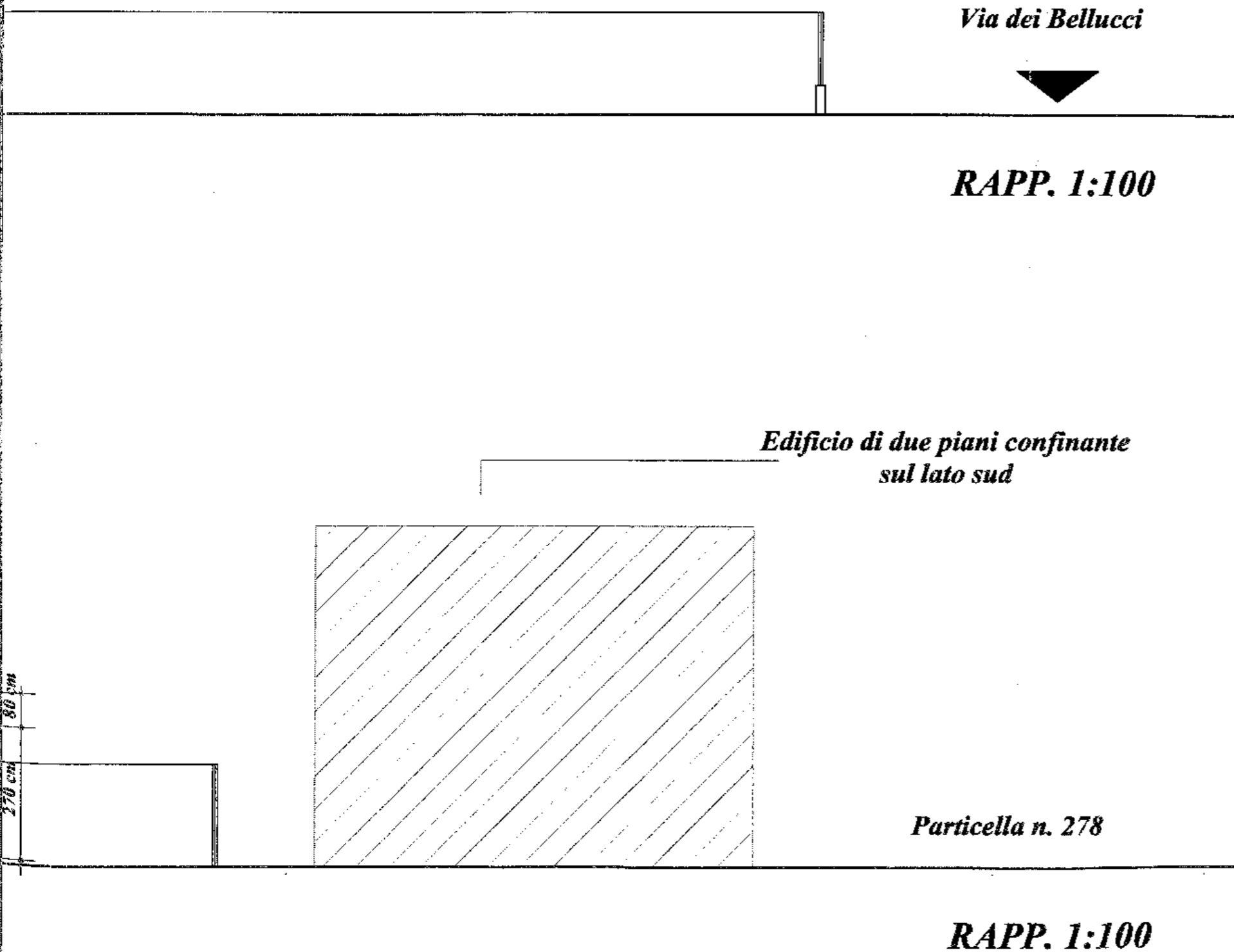
*Edificio di tre piani confinante
sul lato nord*

Particella n. 264

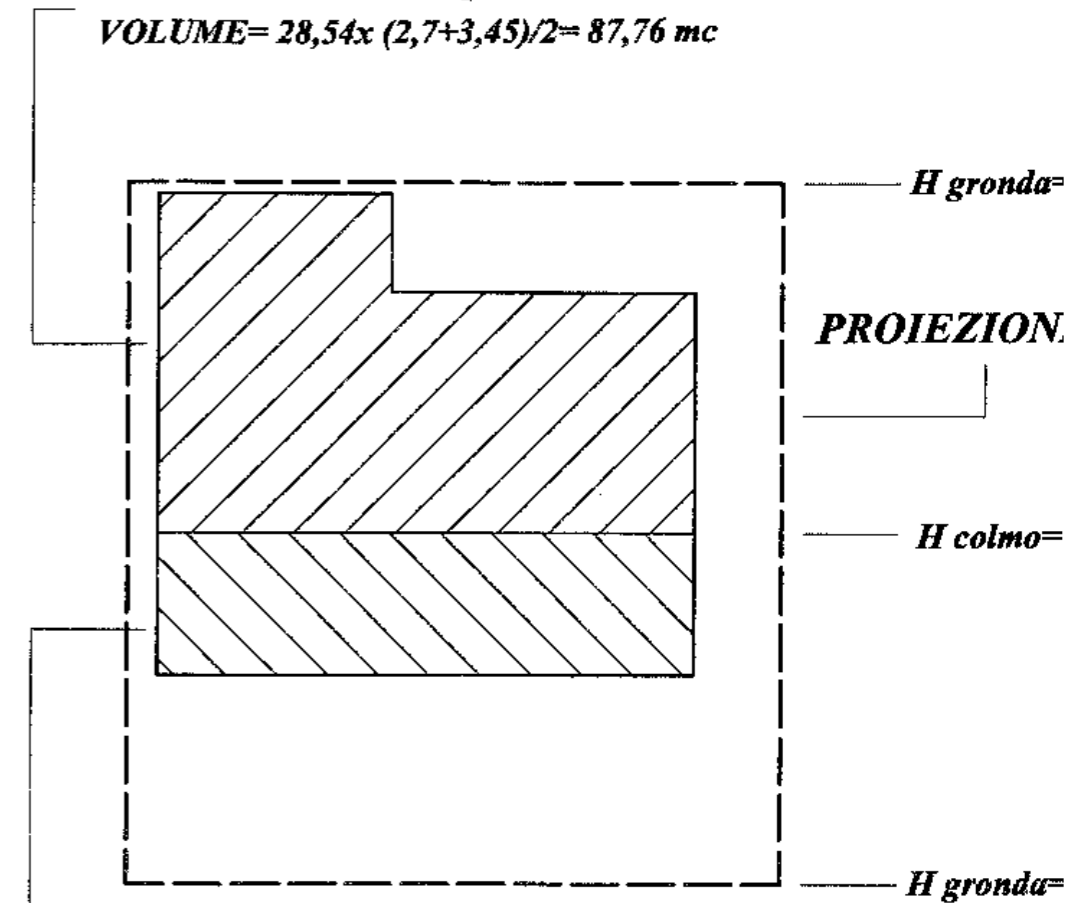


PP. 1:100

CALCOLO DELLE SUPERFICIE E DEI VOLUMI



SUPERFICIE= 28,54 mq
VOLUME= 28,54x (2,7+3,45)/2= 87,76 mc



SUPERFICIE= 13,46 mq
VOLUME= 13,46x (2,7+3,45)/2= 41,38 mc

SUP. TOT.= 42,00 mq
VOL. TOT.= 129,15 mc

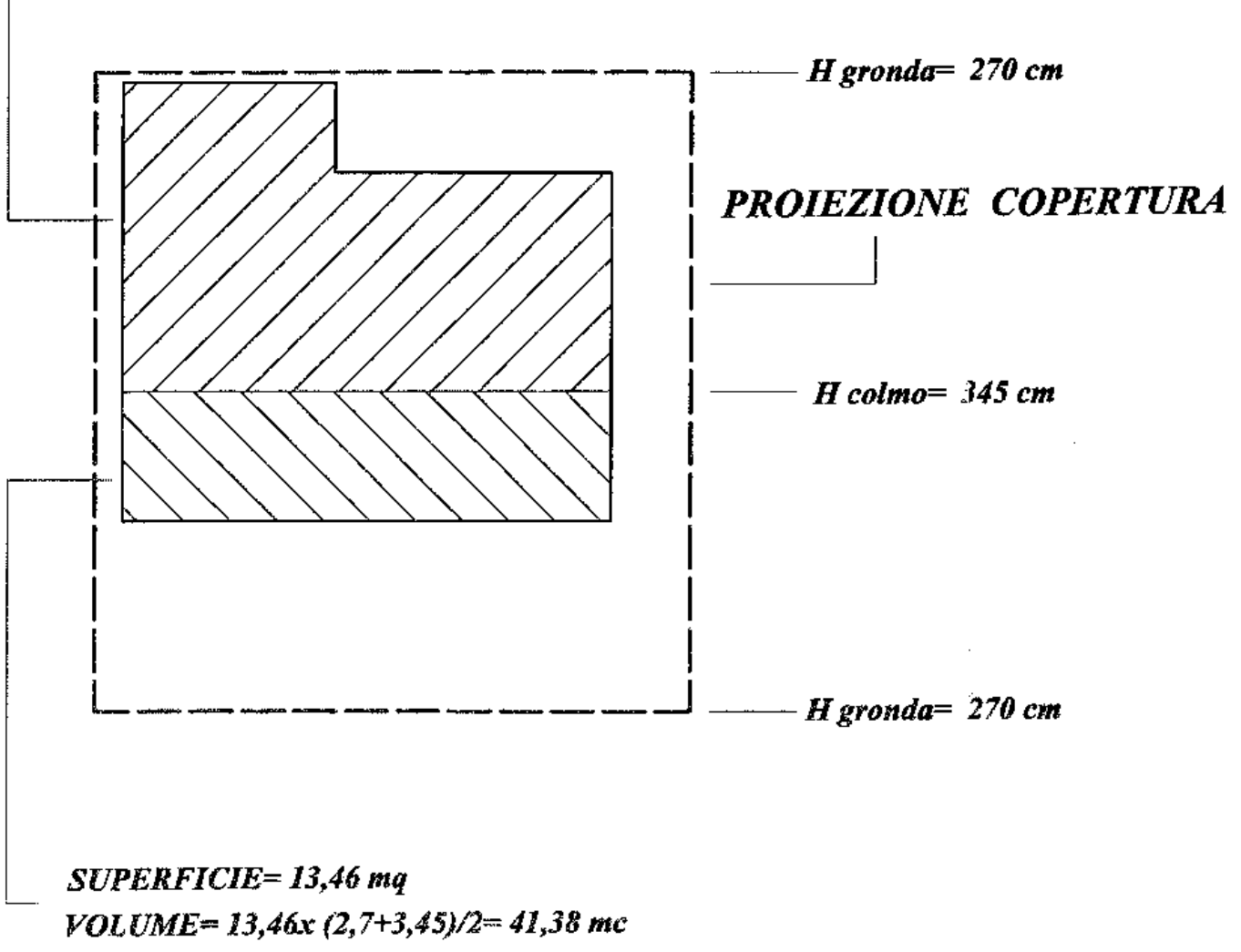
278

1:100

inante

278

1:100



SUP. TOT.= 42,00 mq
VOL. TOT.= 129,15 mc

PART. 575

PART. 602

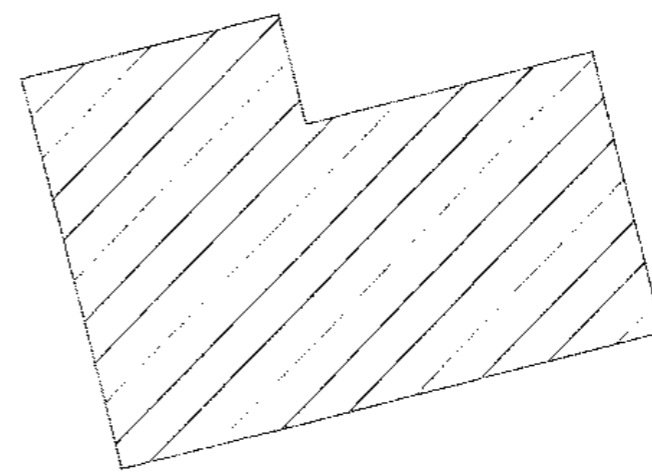
PART. 603

PART. 587

*PLANIMETRIA ANTE OPERAM
RISALENTE AL 1996*

RAPP. 1:200

PART. 572



PART. 575

PART. 602

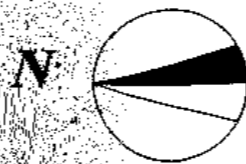
PART. 603

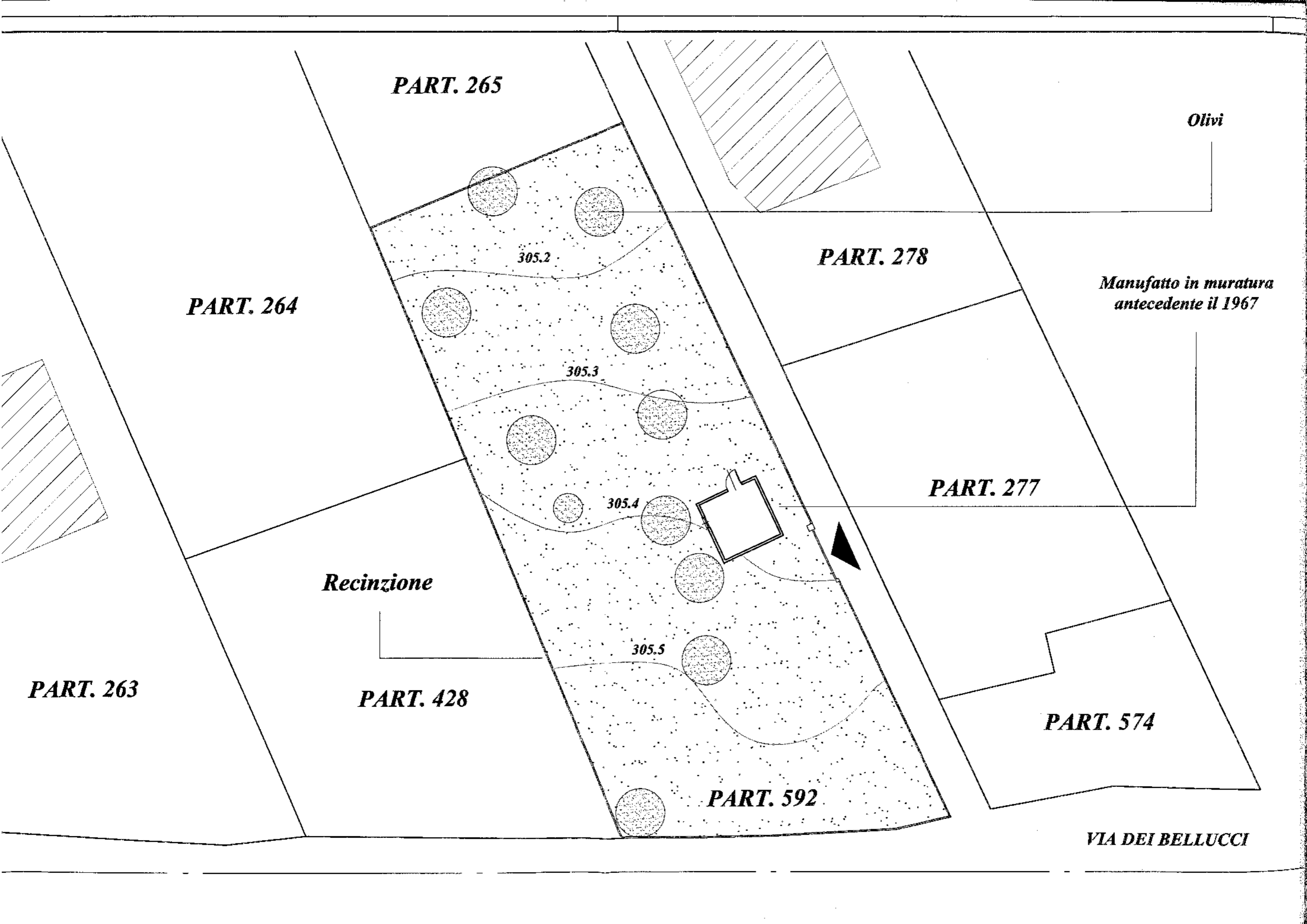
PART. 587

*PLANIMETRIA ANTE OPERAM
RISALENTE AL 1996*

RAPP. 1:200

PART. 572





PART. 265

Olivi

PART. 278

*Manufatto in muratura
antecedente il 1967*

PART. 264

305.2

305.3

PART. 277

305.4

Recinzione

PART. 263

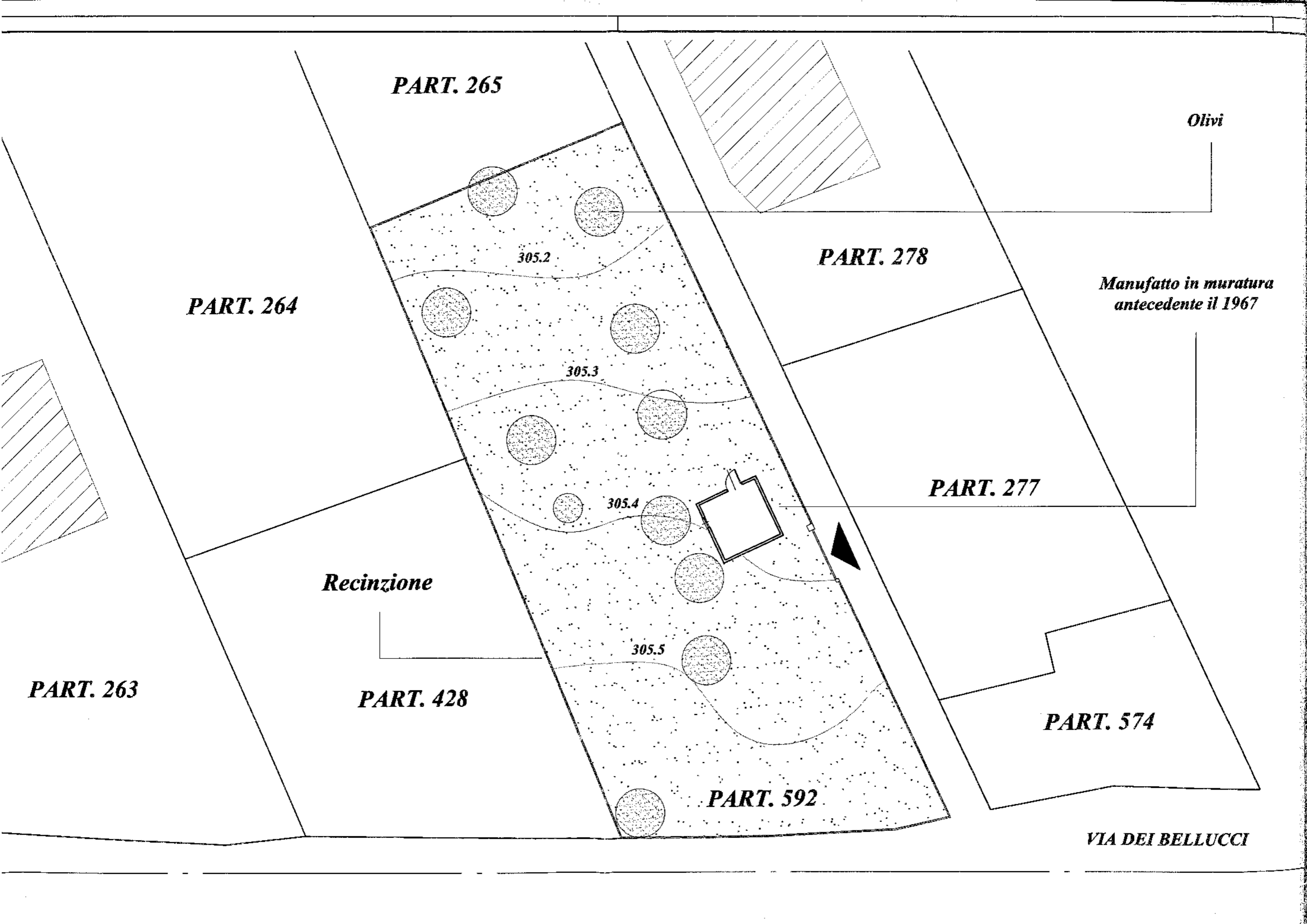
PART. 428

305.5

PART. 574

PART. 592

VIA DEI BELLUCCI



PART. 265

Olivi

PART. 278

*Manufatto in muratura
antecedente il 1967*

PART. 264

305.2

PART. 277

305.3

Recinzione

305.4

PART. 263

PART. 428

305.5

PART. 574

PART. 592

VIA DEI BELLUCCI

**STATO ATTUALE
PLANIMETRIA POST OPERAM
RISALENTE AL 1997**

RAPP. 1:200



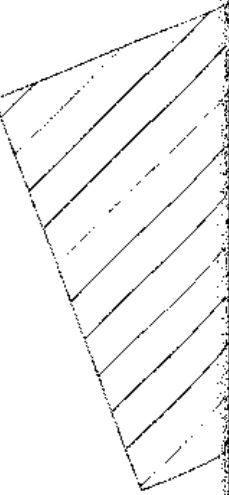
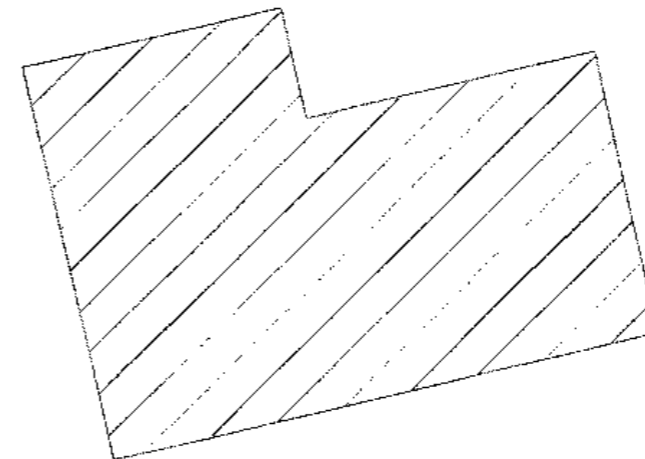
PART. 603

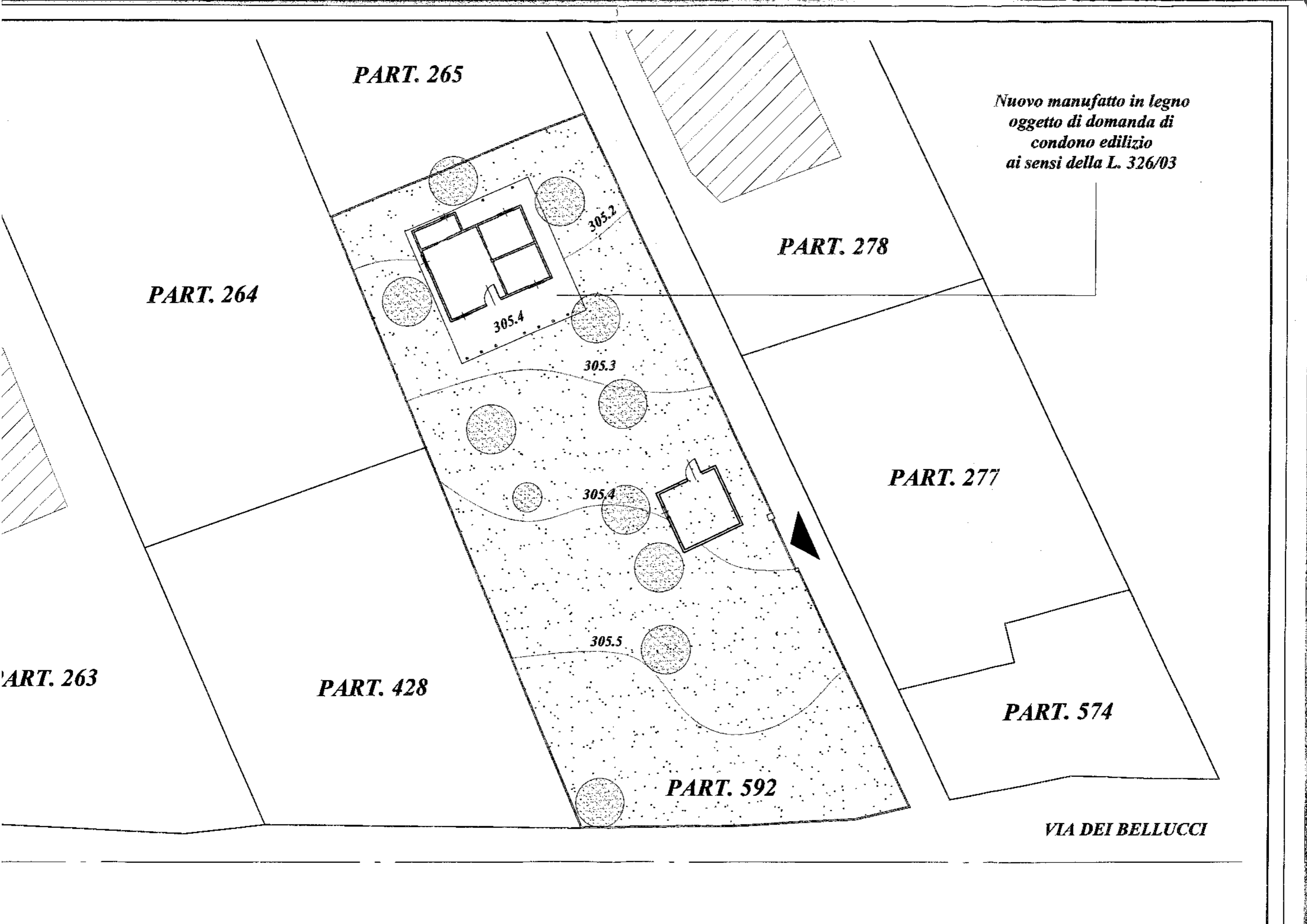
PART. 602

PART. 575

PART. 587

PART. 572





PART. 265

*Nuovo manufatto in legno
oggetto di domanda di
condono edilizio
ai sensi della L. 326/03*

PART. 278

PART. 264

PART. 277

305.4

305.3

305.4

305.5

PART. 263

PART. 428

PART. 574

PART. 592

VIA DEI BELLUCCI