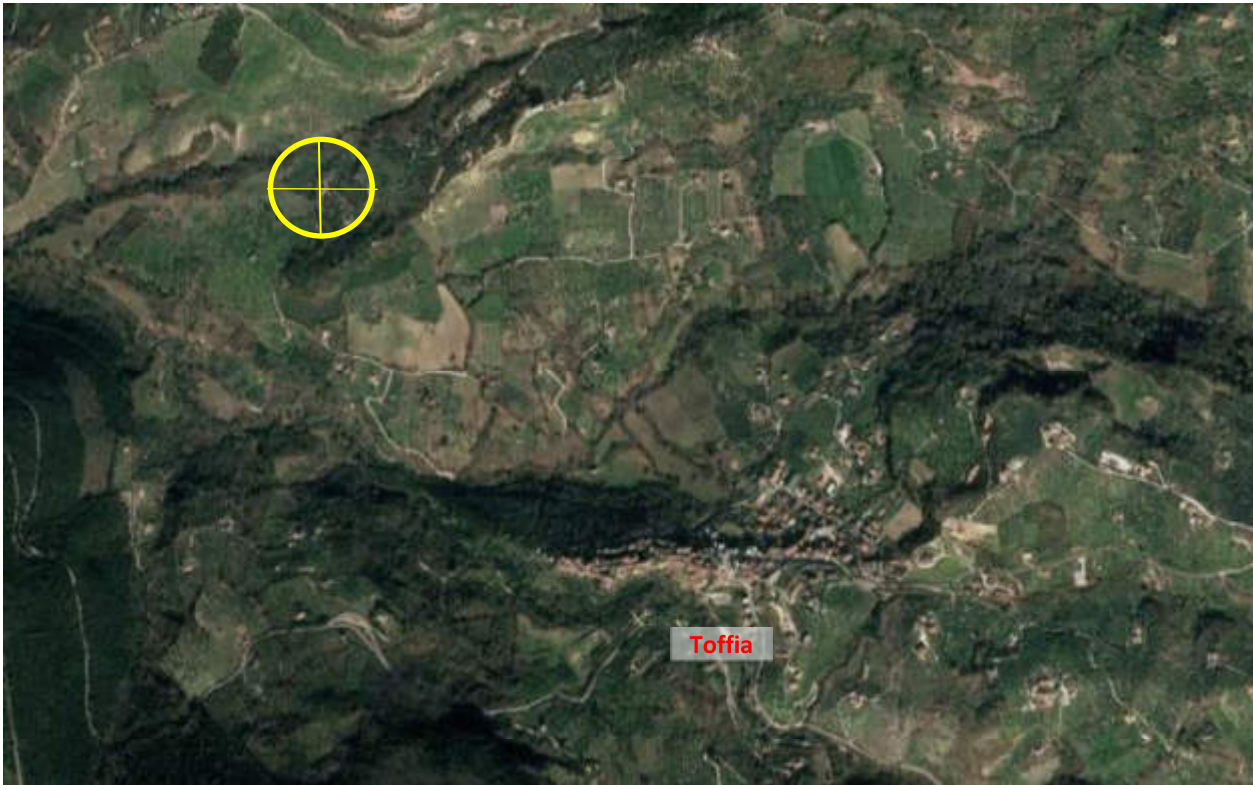


**02) DOCUMENTAZIONE FOTOGRAFICA DEL BENE PIGNORATO**



**Foto 1 – Vista aerea**

Fonte <https://www.google.it/maps>

Coordinate 42.212133, 12.754201



**Foto 2 – Vista aerea**

Fonte <https://www.google.it/maps>

Coordinate 42.220244, 12.741637



Foto 3-4 – Accesso carrabile dalla via comunale





**Foto 5-6** – Vista corte esterna esclusiva

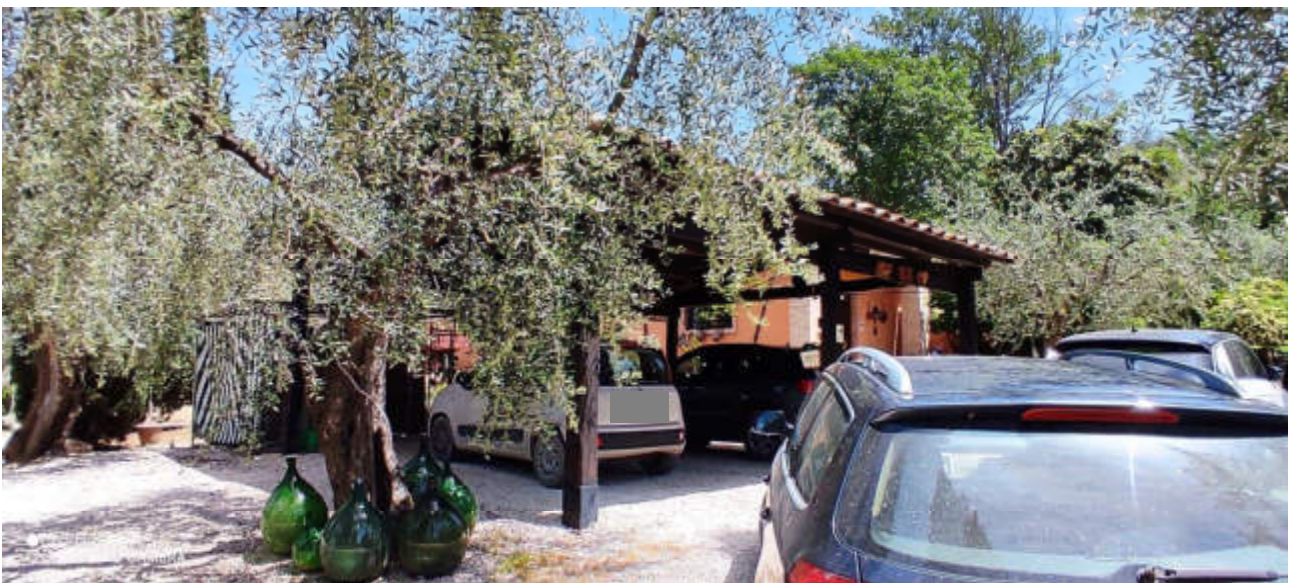




**Foto 7 – Vista corte esterna esclusiva  
MANUFATTO 3 - Tettoia**



**Foto 8-9 – Tettoia uso parcheggio**



**MANUFATTO 1 - Villa**



**Foto 10,11 e 12 – Vista esterna, prospetto nord**



**Foto 13** – Vista esterna, prospetto ovest



**Foto 14** – Vista esterna, prospetto sud



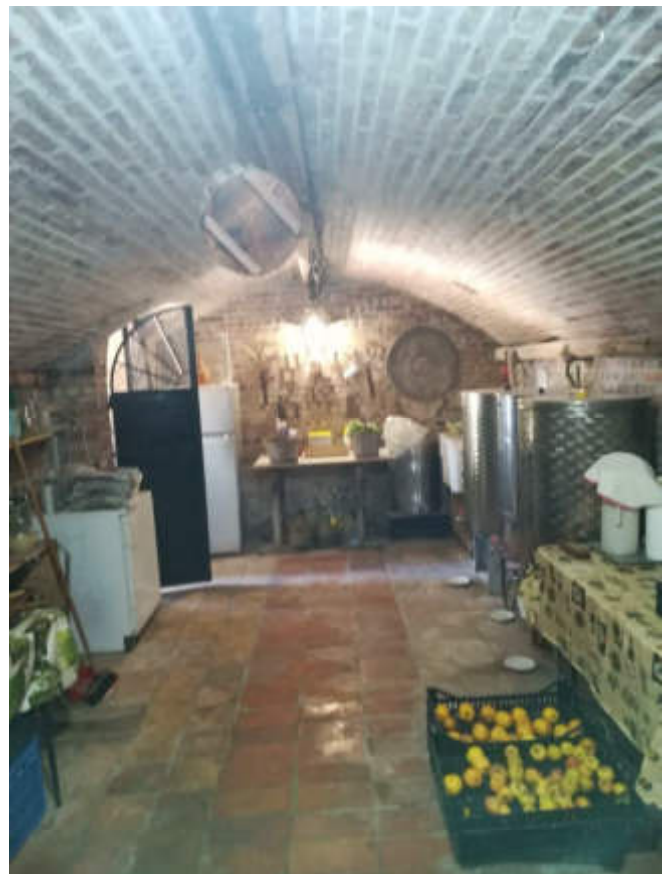
**Foto 15** – Vista esterna, prospetto est



Foto 16 – Vista esterna, prospetto sud



Foto 17 e 18 – Vista interna, centrale idrica / cantina



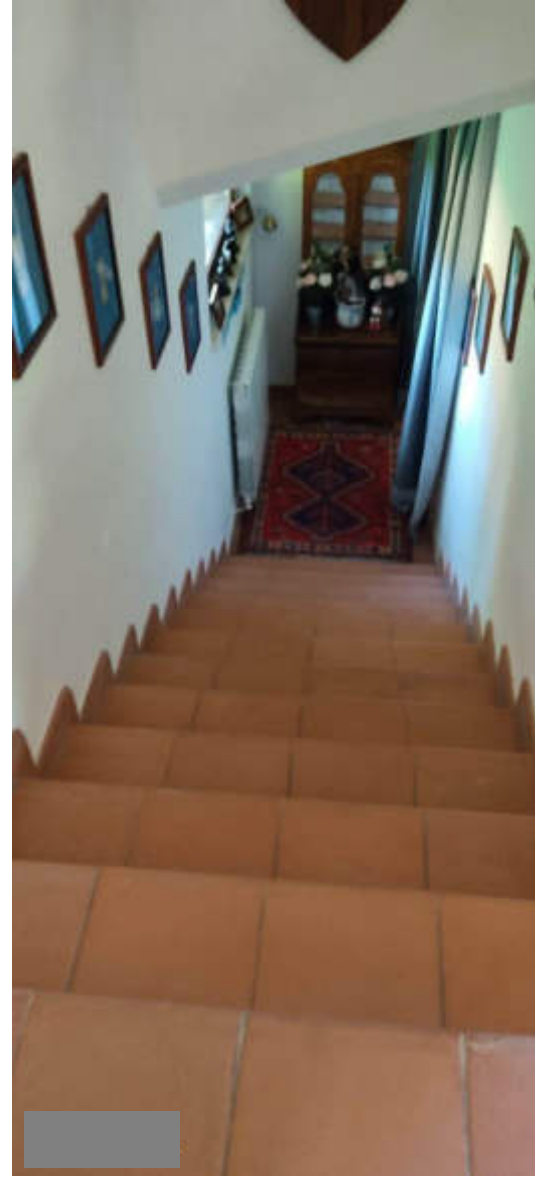


Foto 19 e 20 – Vista interna, ingresso e salotto piano terra.

Foto 20, 21 e 22 – Vista interna, scale di collegamento e vano realizzato senza titolo edilizio, non regolarizzabile urbanisticamente e da demolire

Foto 23, 24, 25, 26 e 27 – Vista interna piano terra

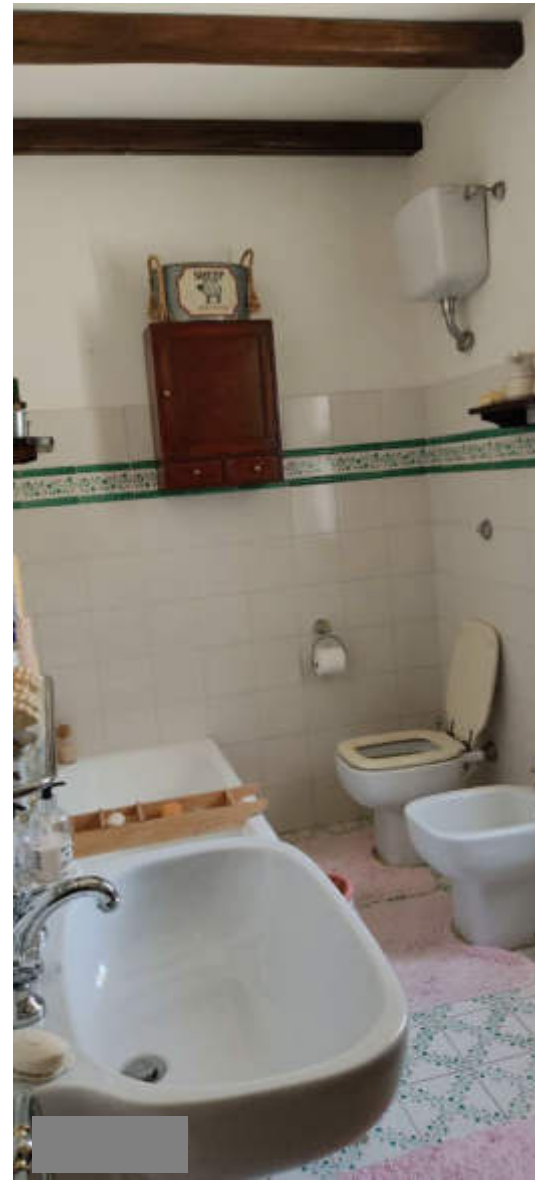


Foto 28, 29 e 30 – Vista interna piano terra, scala di collegamento e piano primo

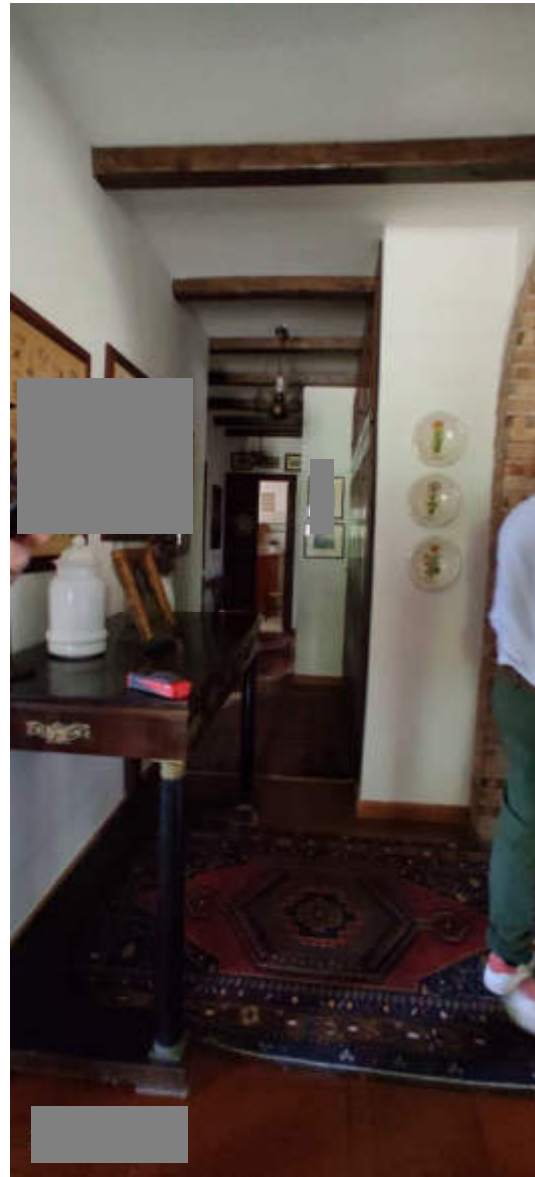
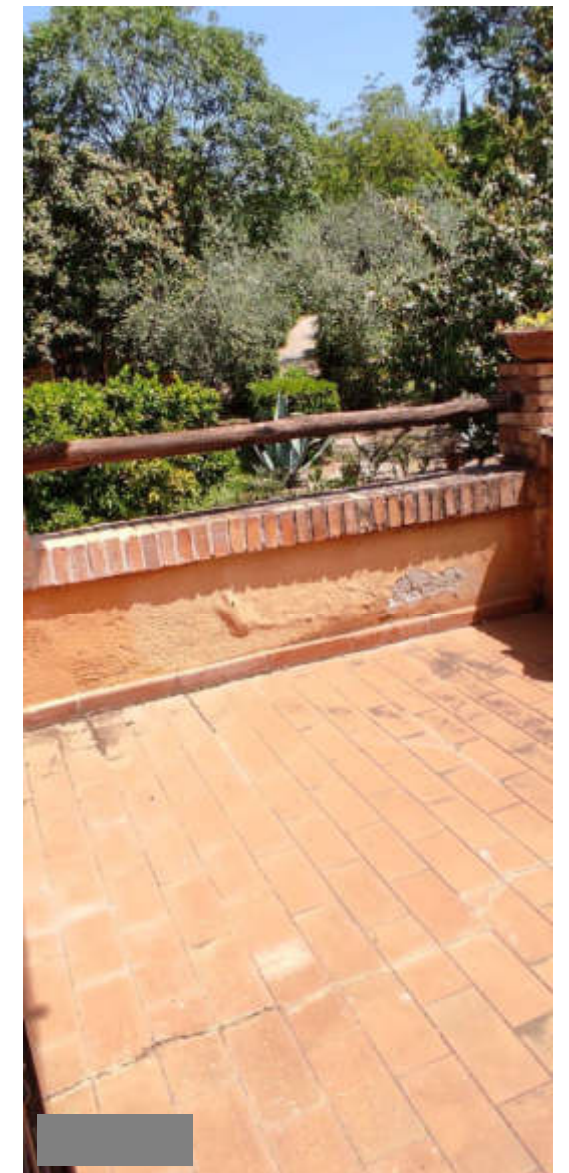
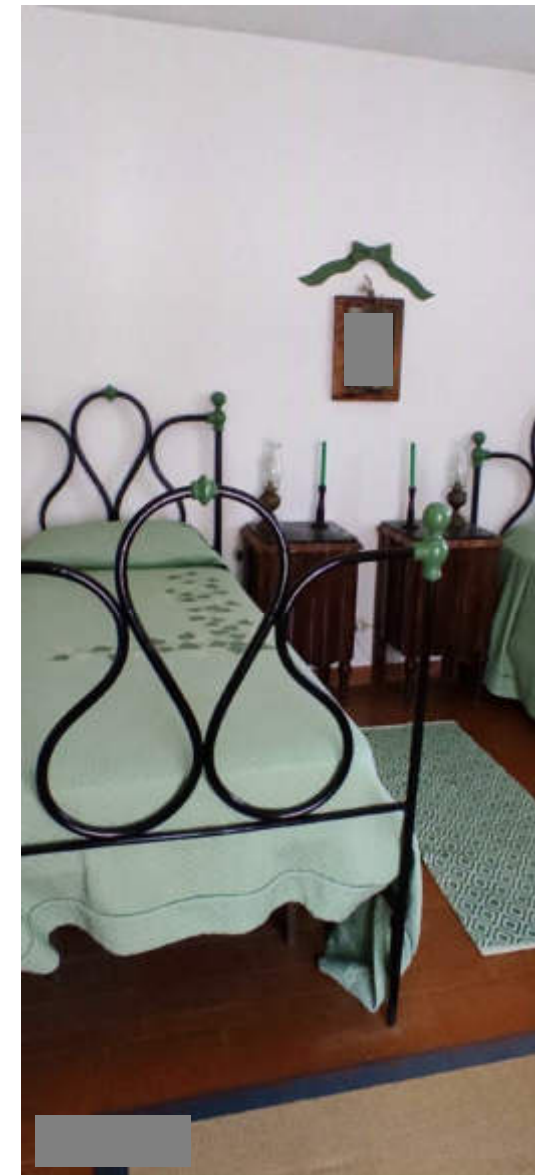


Foto 31 e 32 – Vista balcone piano primo, trasformato in volume non autorizzato urbanisticamente, da demolire



Foto 33, 34, 35, 36 e 37 – Vista interna piano primo e terrazzo



## MANUFATTO 4 – Piscina e servizi



Foto 38 e 39 – vista vasca e servizi



MANUFATTO 5 – Dependance



Foto 40 e 41 – vista eterna, prospetti ovest e nord



Foto 42 e 43 – vista eterna, prospetto est e giardino



Foto 44, 45, 46, 47, 48 e 49 – vista interna

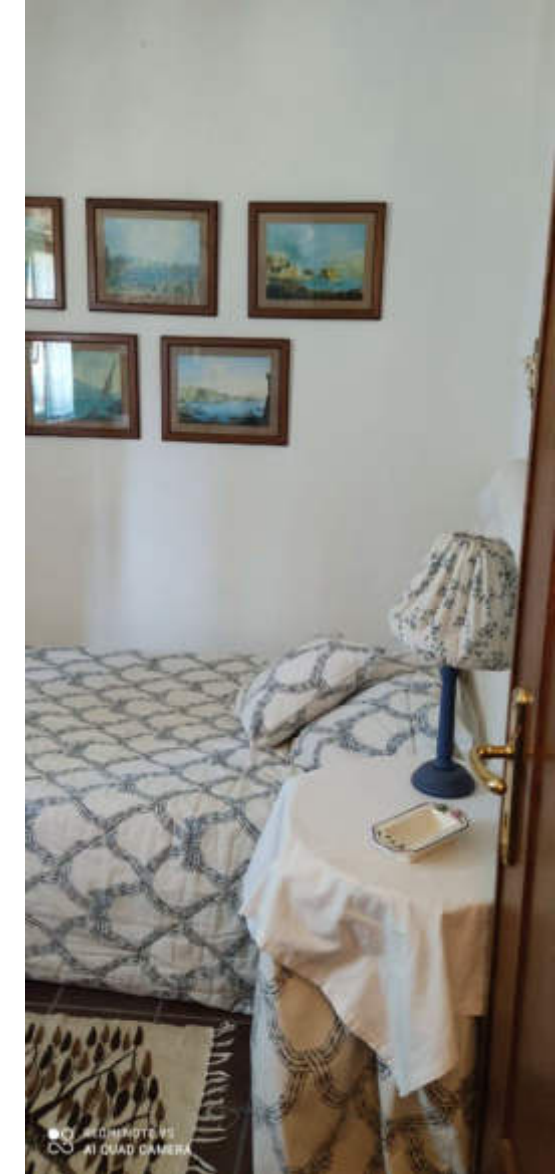
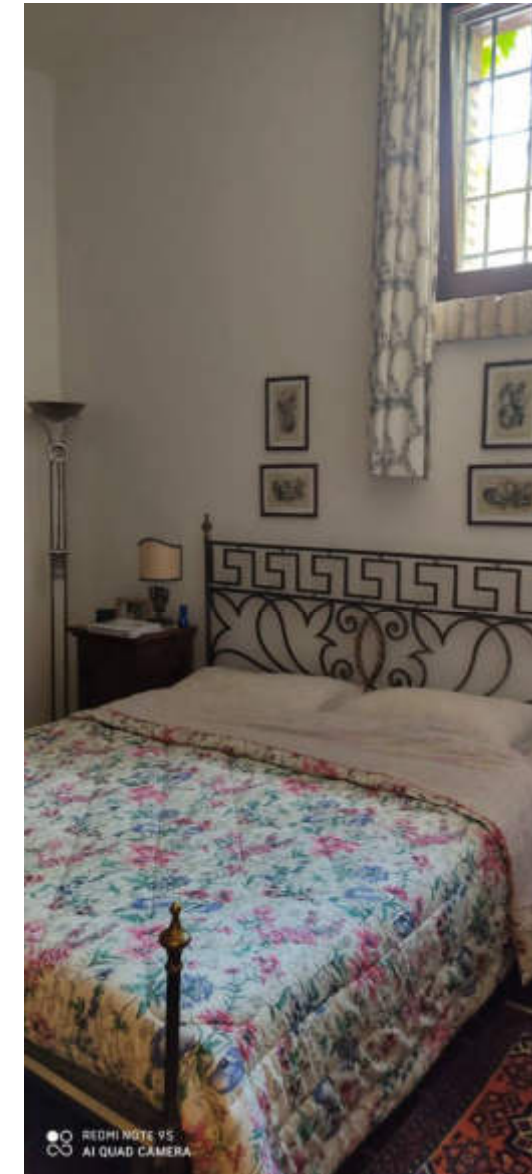
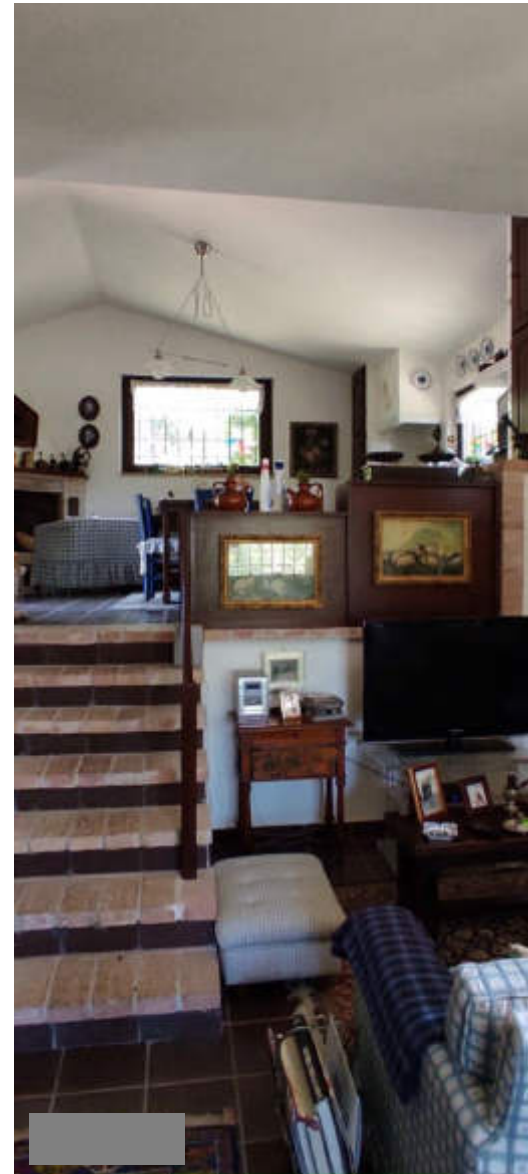


Foto 50, 51 e 52 – vista interna

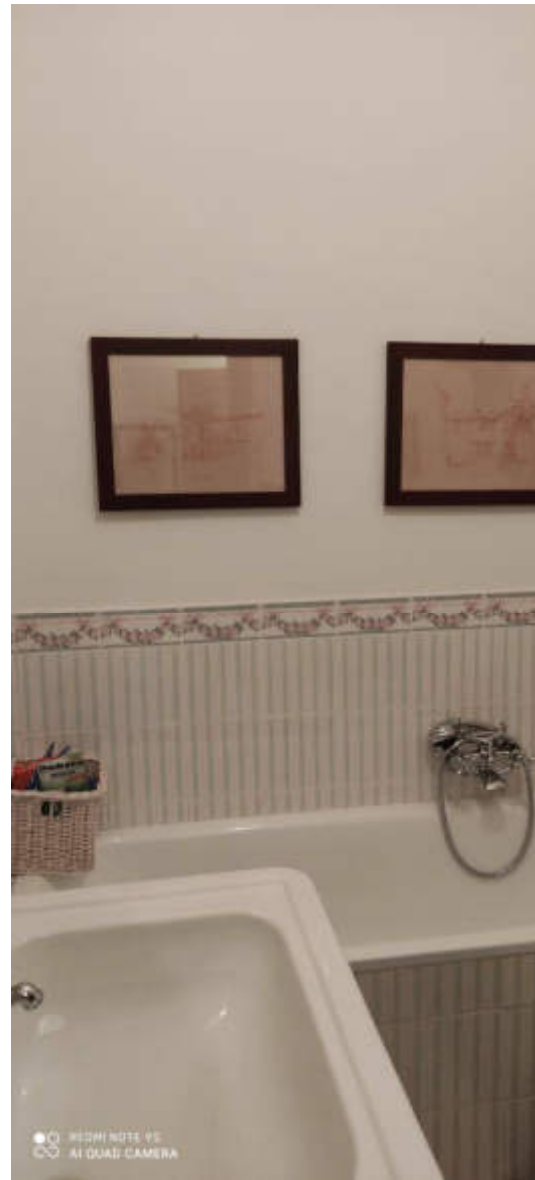


Foto 53 e 54 – vista interna, rimessa attrezzi

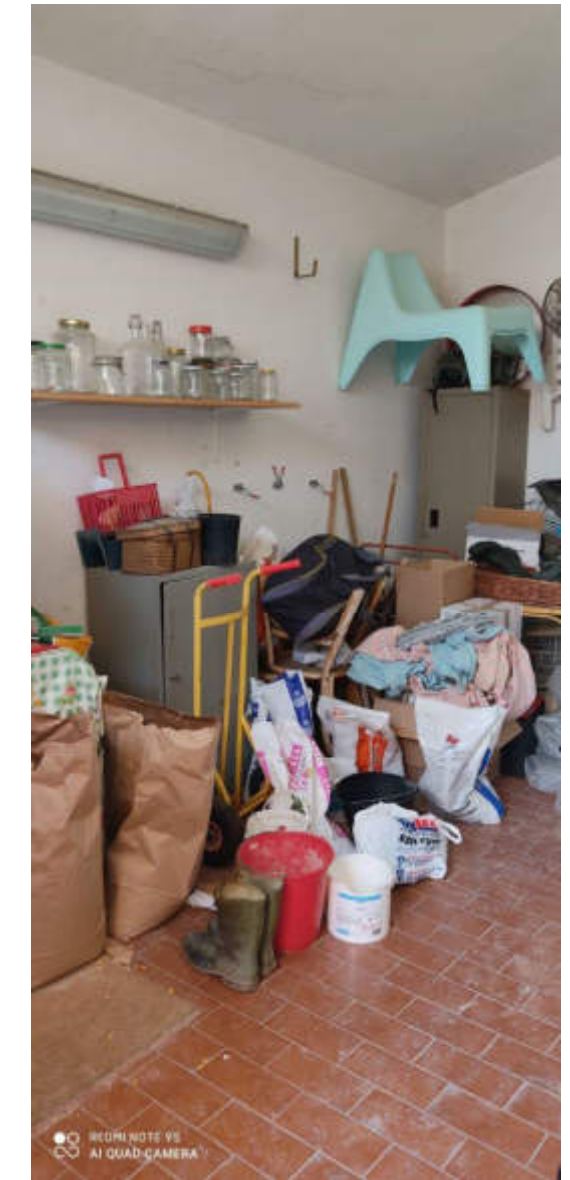
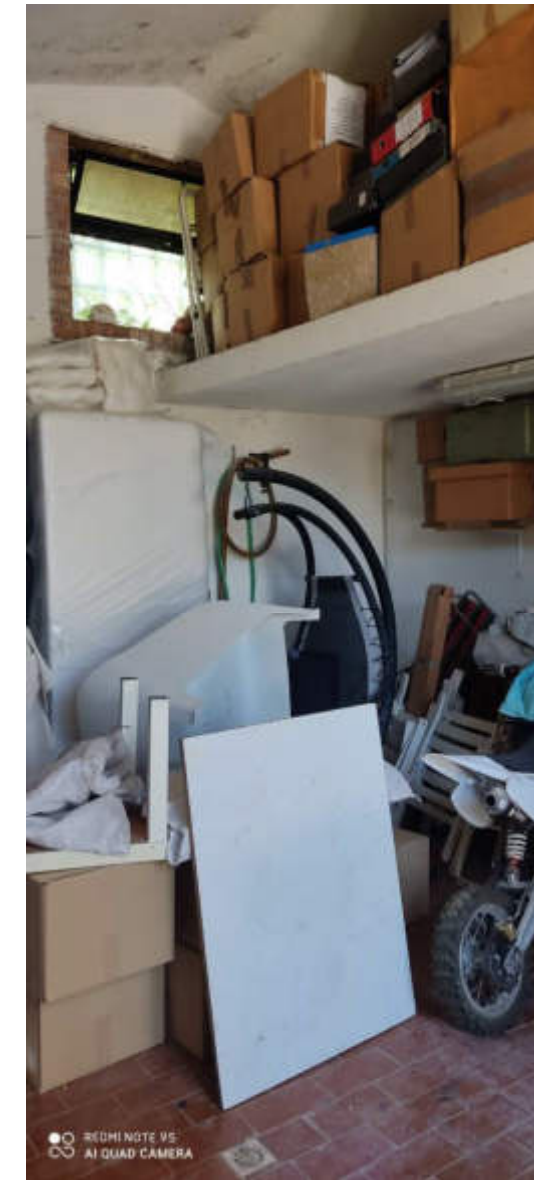


Foto 55 – vista interna, rimessa attrezzi



Foto 56 – vista esterna, forno



## CORPO B

Foto 57, 58, 59 e 60– vista esterna, terreni agricoli

