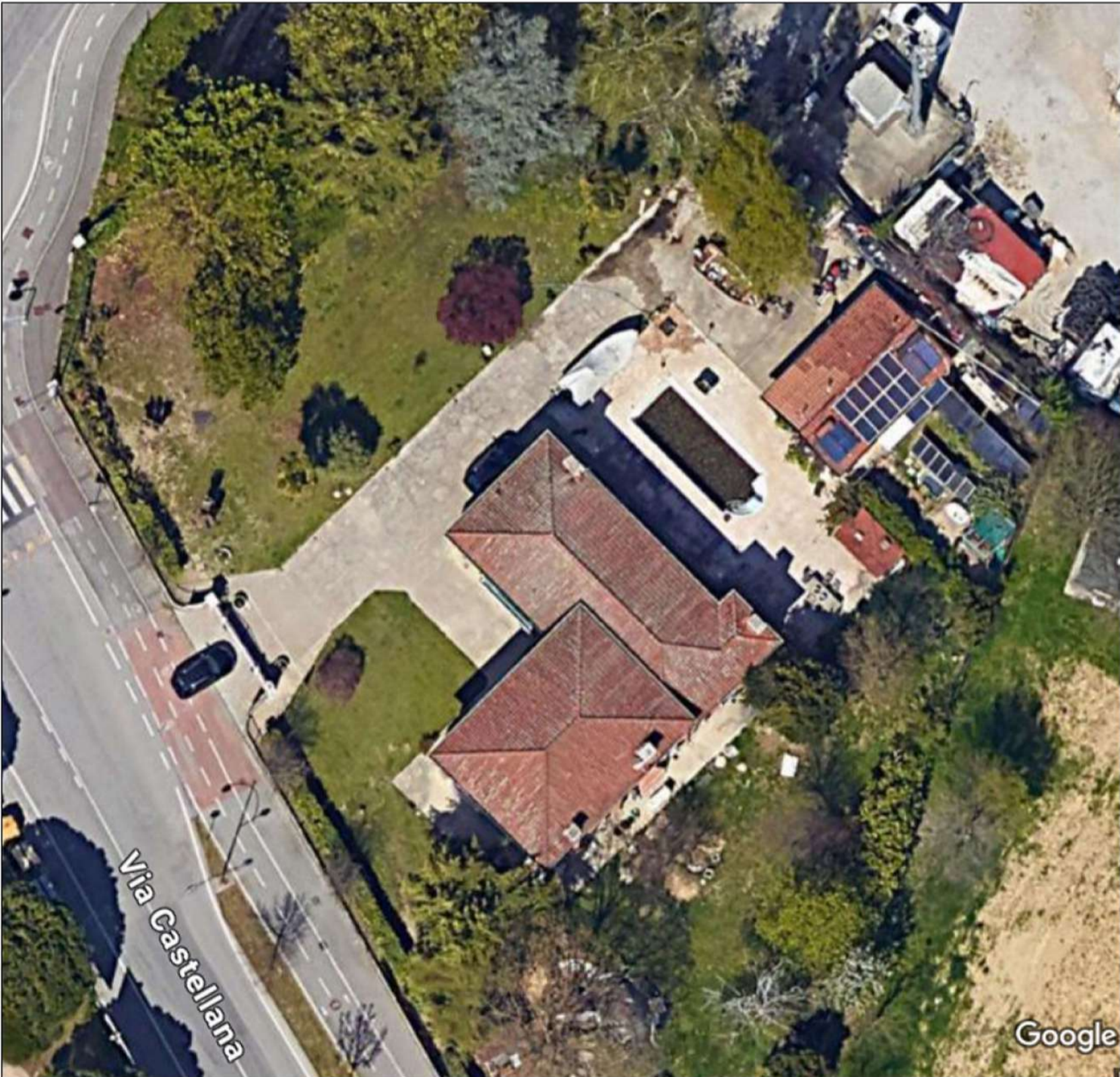


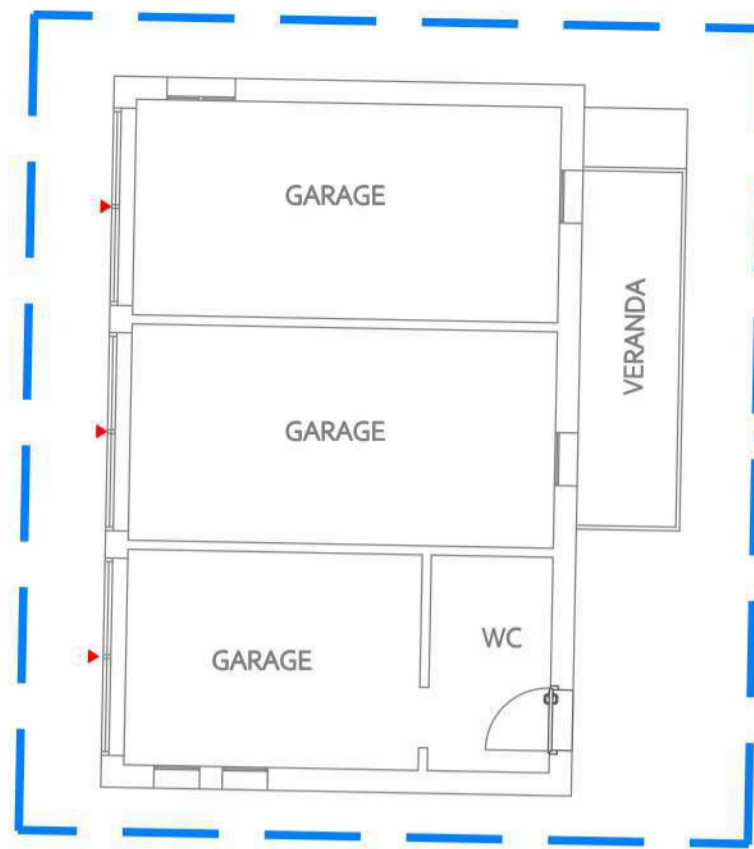
Allegato 09.01
Rilievo fotografico

LOTTO 01
21/11/2024

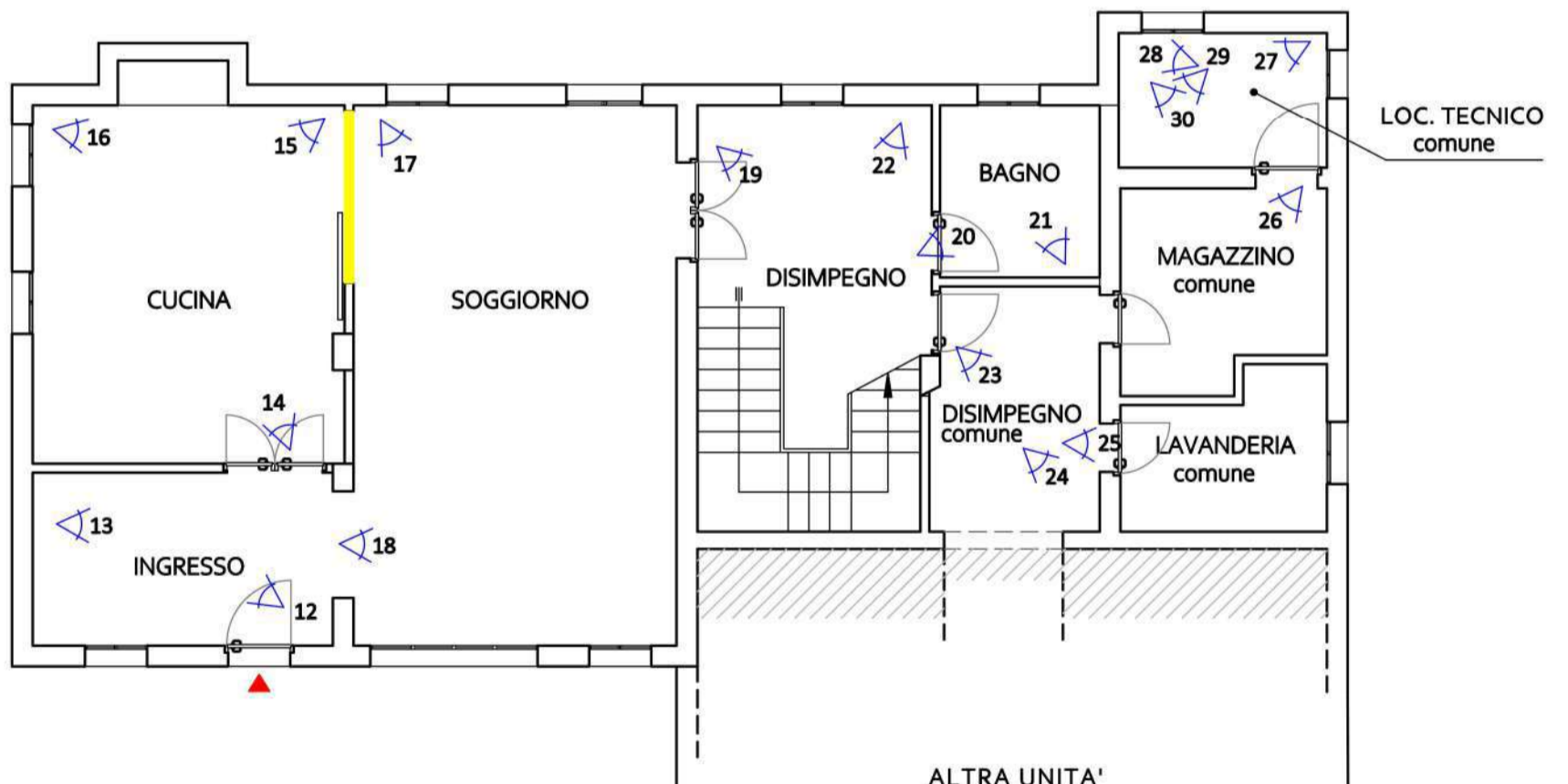


INQUADRAMENTO GENERALE





LOTTO 02
medesima
procedura
E.I. 233/2024



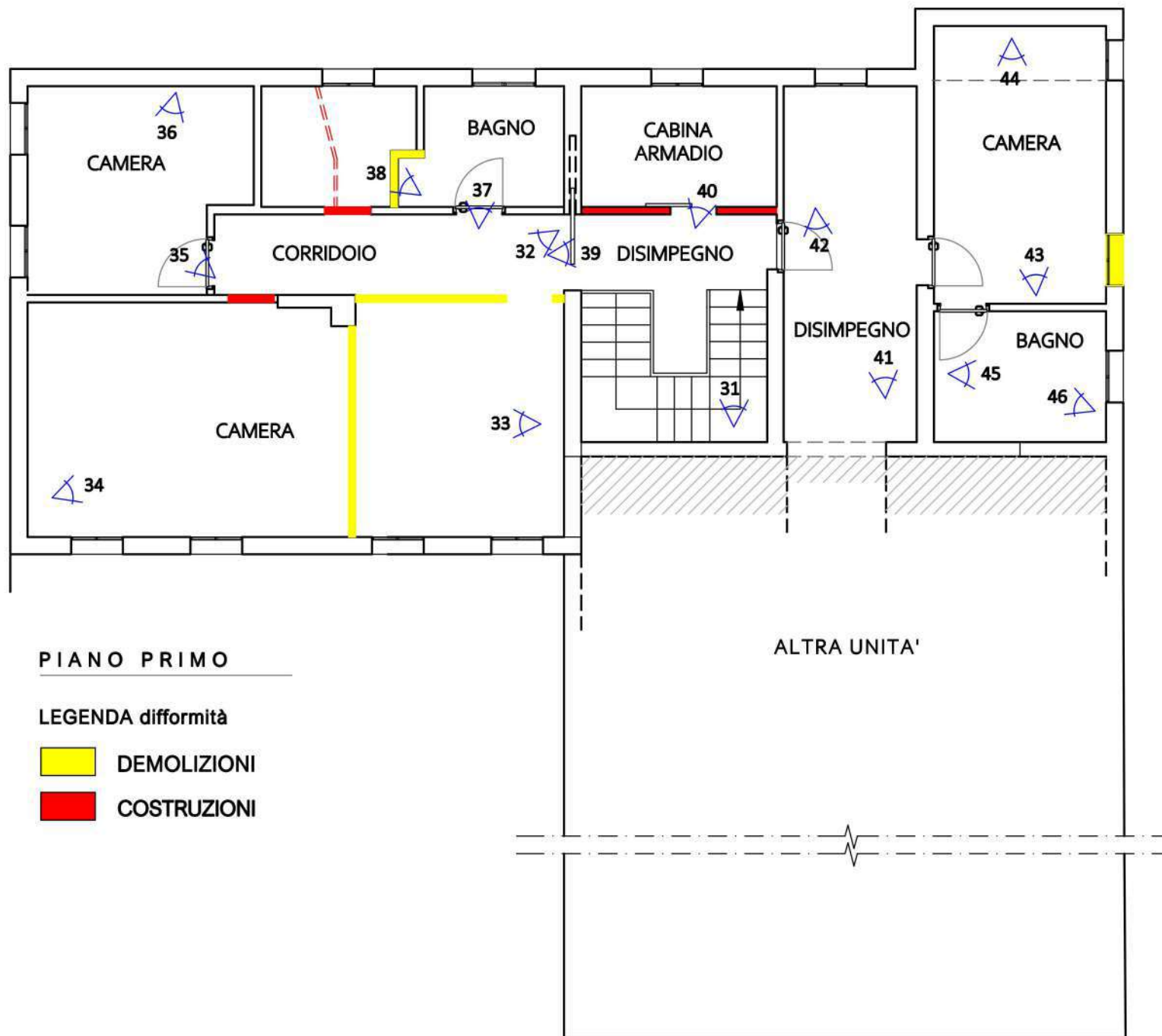




foto 01 - vista esterna da Via Castellana



foto 02 - porzione di edificio, fronte sud



foto 03 - vista esterna, ingresso carrabile



foto 04 - area esterna, lato nord / ovest



foto 05 - fronte ovesti



foto 06 - fronte nord



foto 07 - area esterna



foto 08 - area esterna e fronte est



foto 09 - area esterna lato est



foto 10 - area esterna lato est



foto 11 - area esterna lato sud

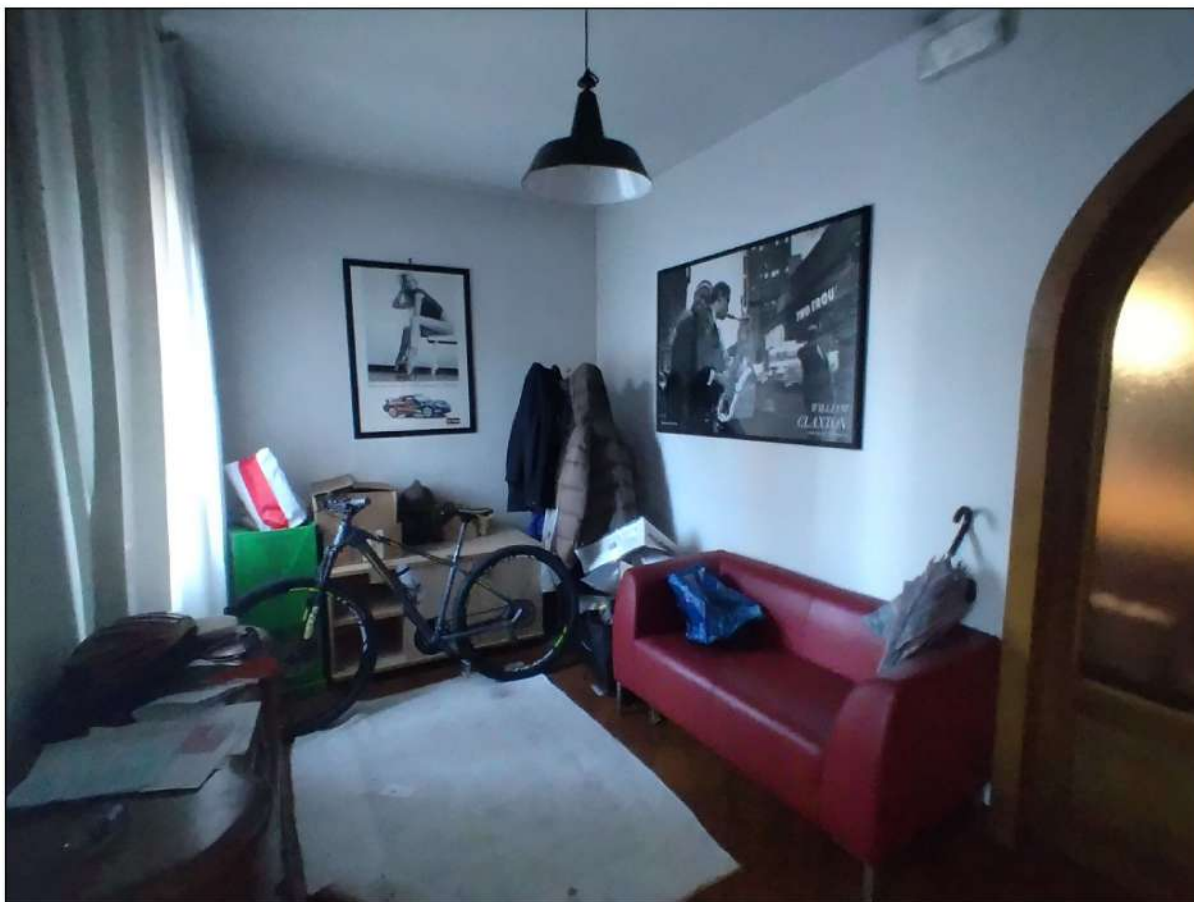


foto 12 - ingresso



foto 13 - ingresso



foto 14 - cucina



foto 15 - ingresso



foto 16 - cucina



foto 17 - soggiorno



foto 18 - soggiorno



foto 19 - disimpegno

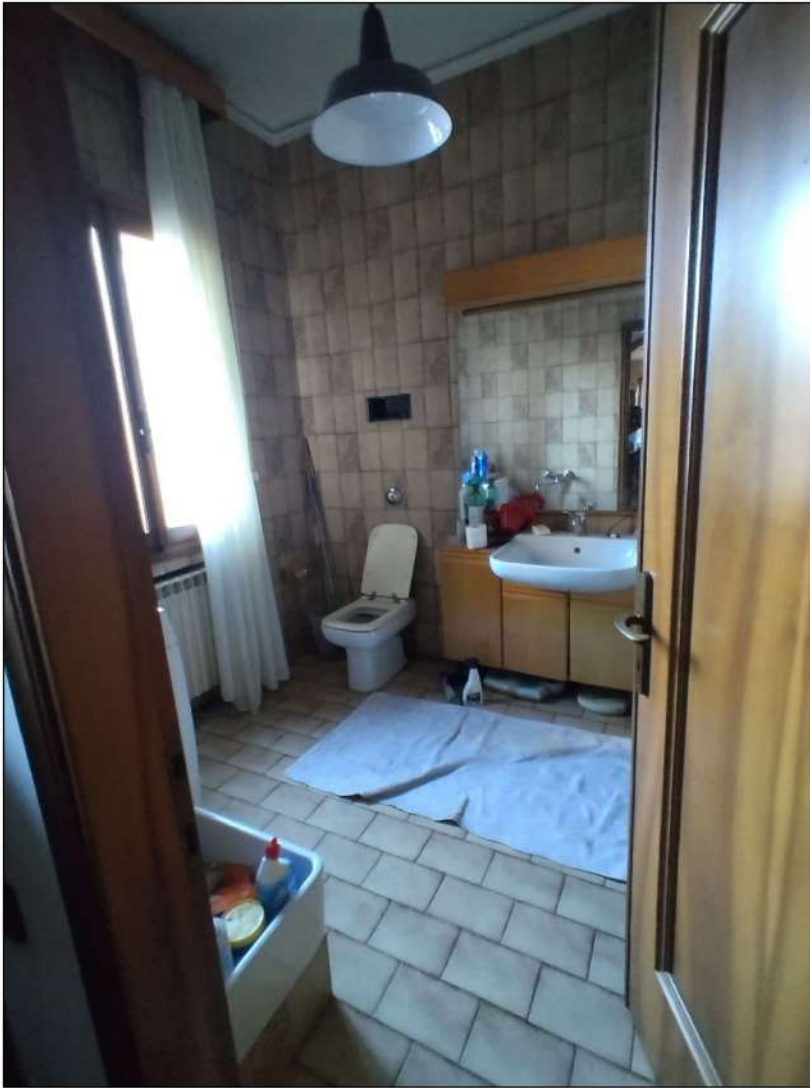


foto 20 - bagno

foto 21 - bagno



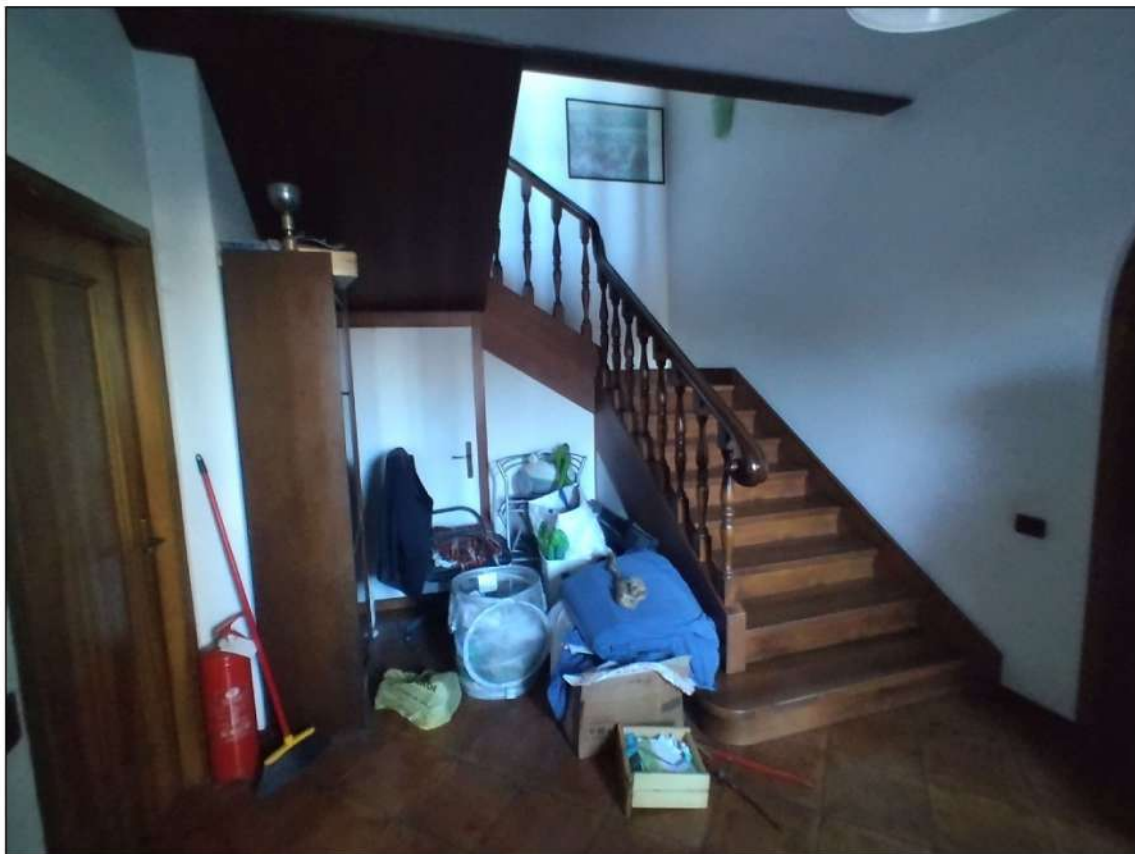


foto 22 - disimpegno



foto 23 - disimpegno comune



foto 24 -dettaglio disimpegno comune

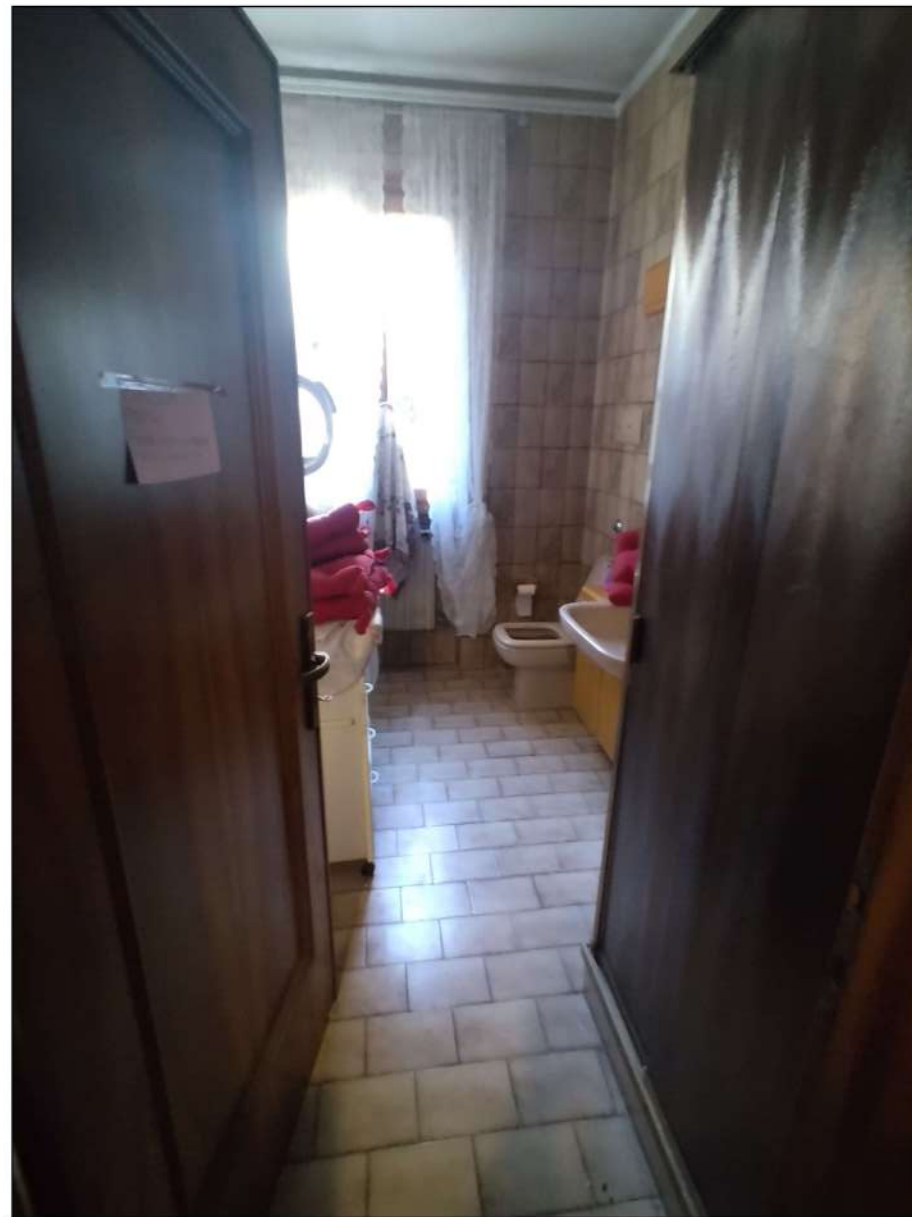


foto 25 -lavanderia comune



foto 26 - disimpegno comune

foto 27 - centrale termica

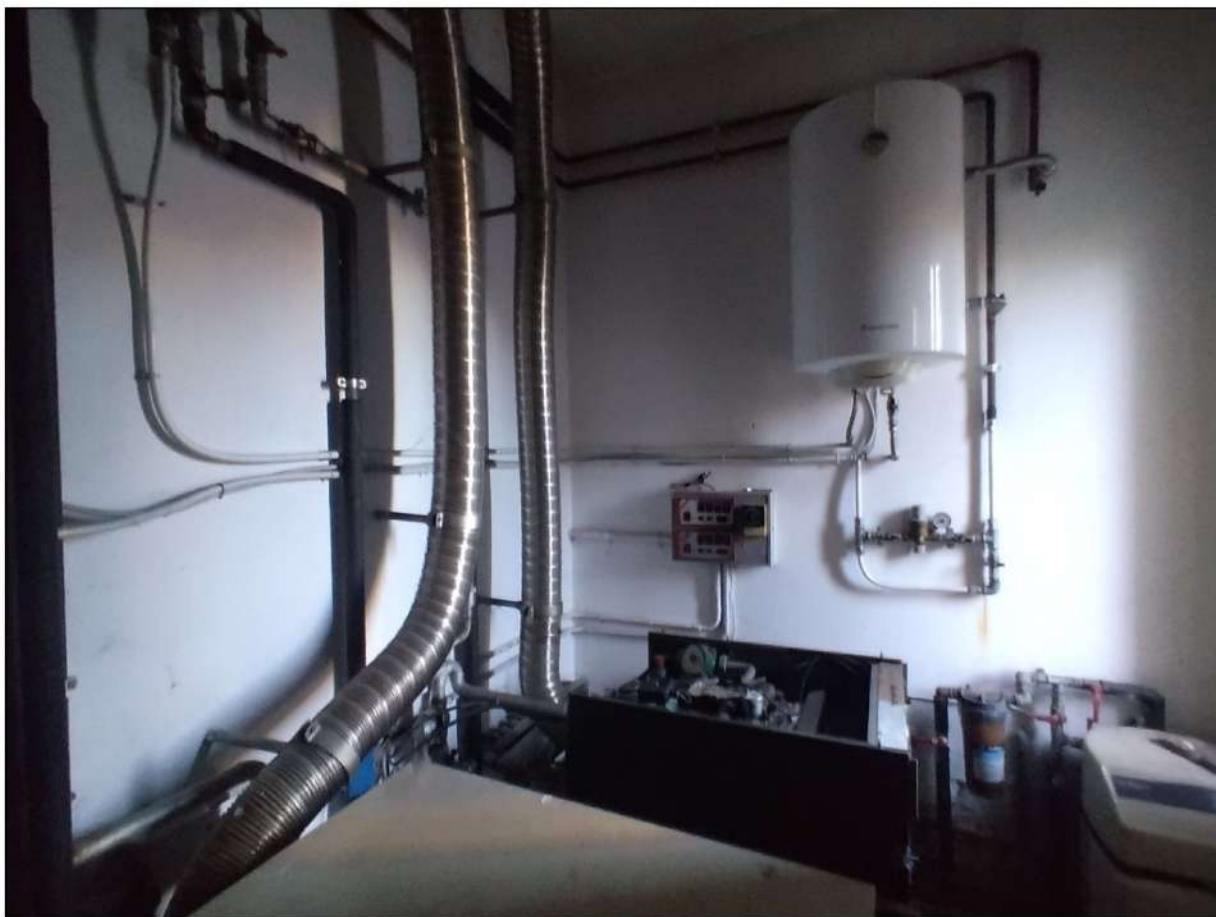




foto 28 -centrale termica comune



foto 29 - centrale termica comune

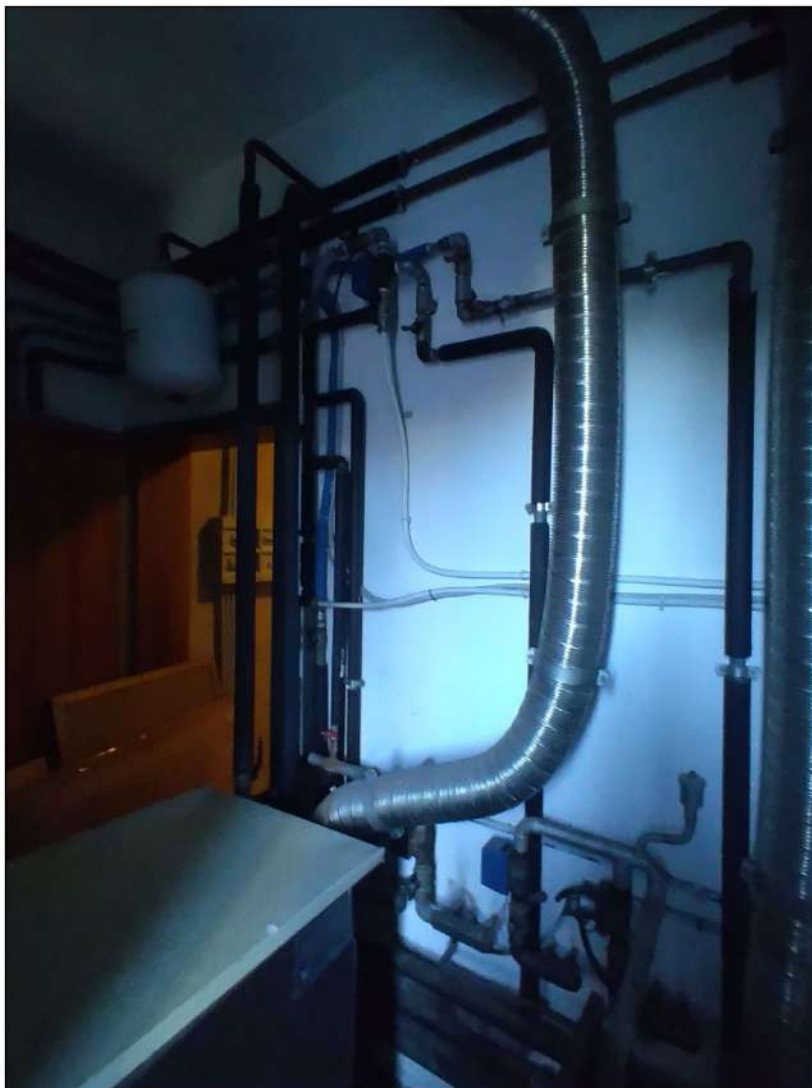


foto 30 - centrale termica
c o m u n e

foto 31 - vano scale e
disimpegno piano primo

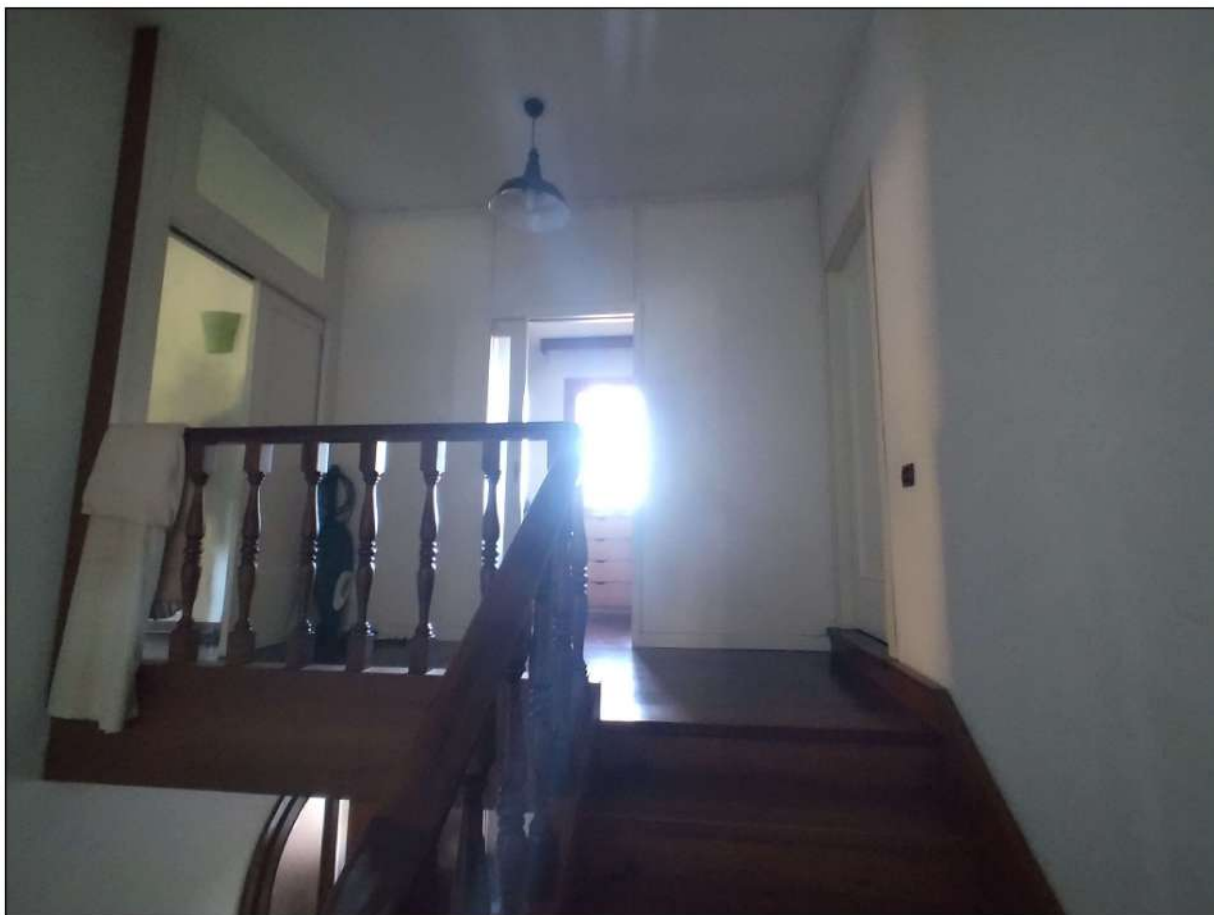




foto 32 -corridoio / disimpegno / camera P1°

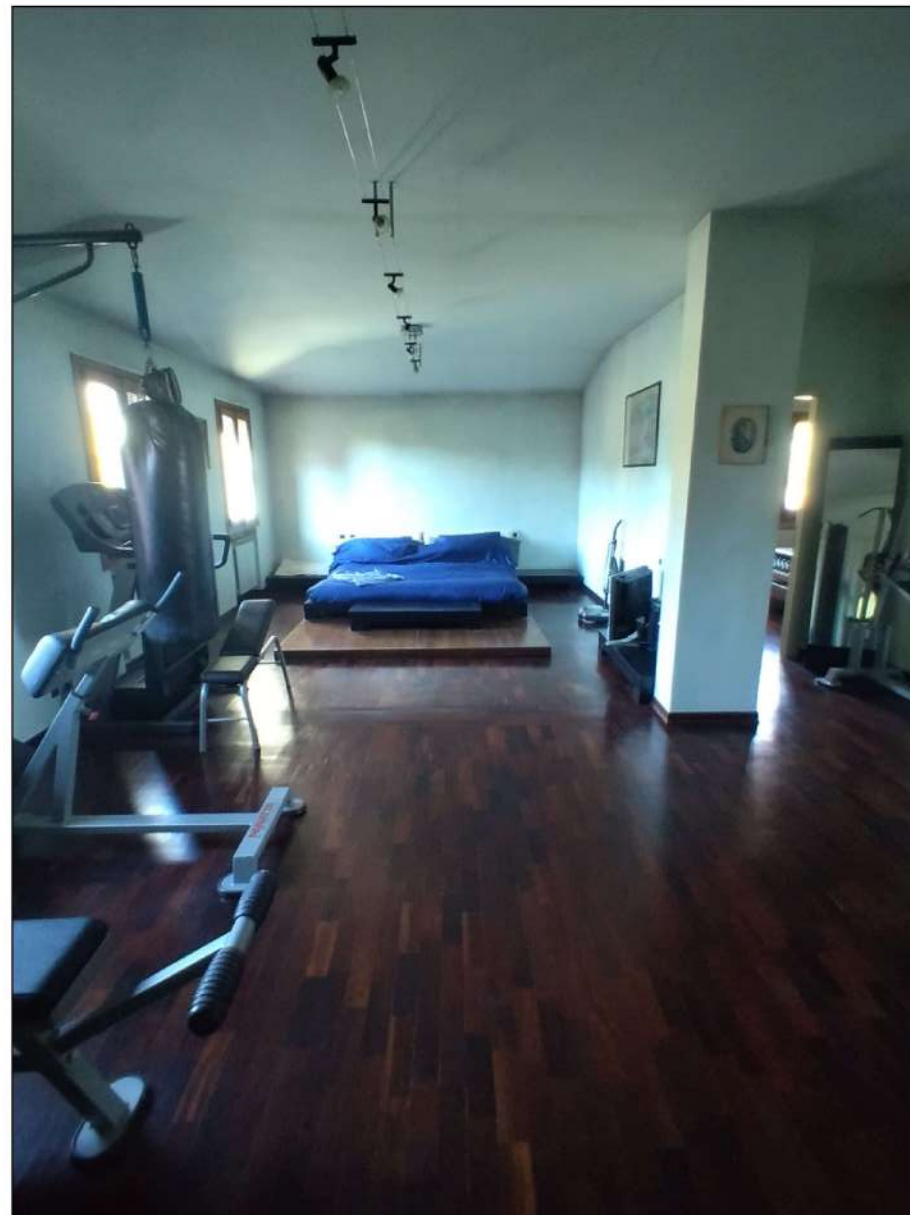


foto 33 - camera

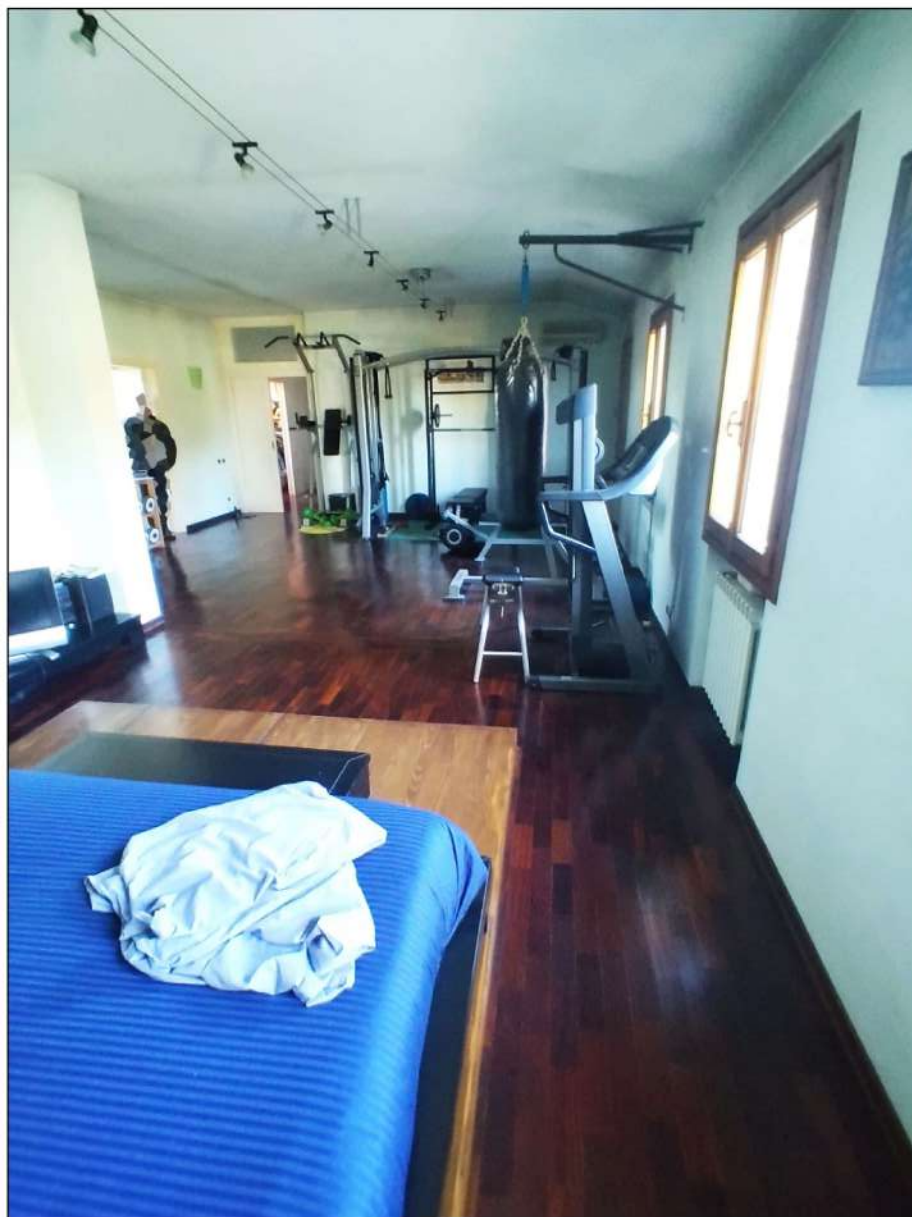


foto 34 - camera



foto 35 - camera

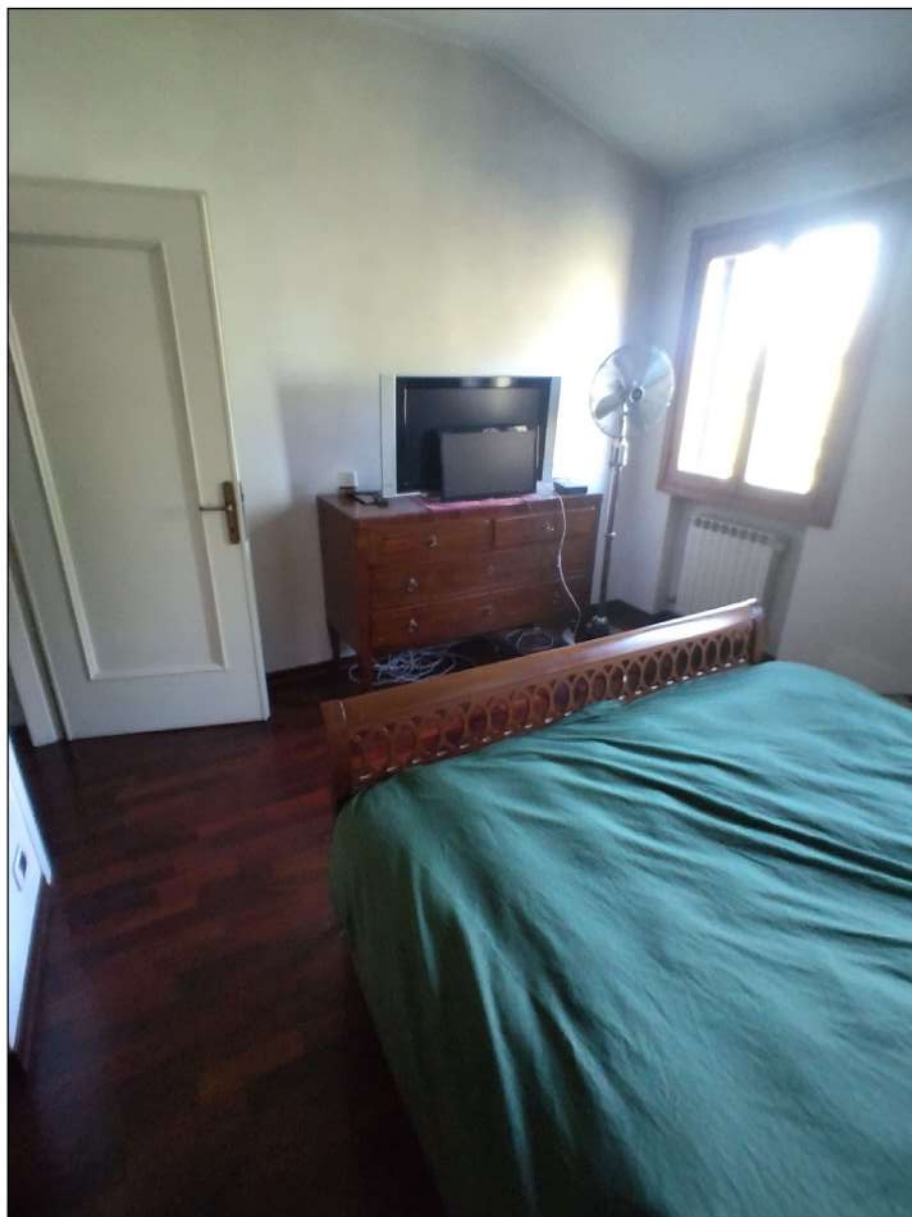


foto 36 - camera



foto 37 - bagno



foto 38 - sauna

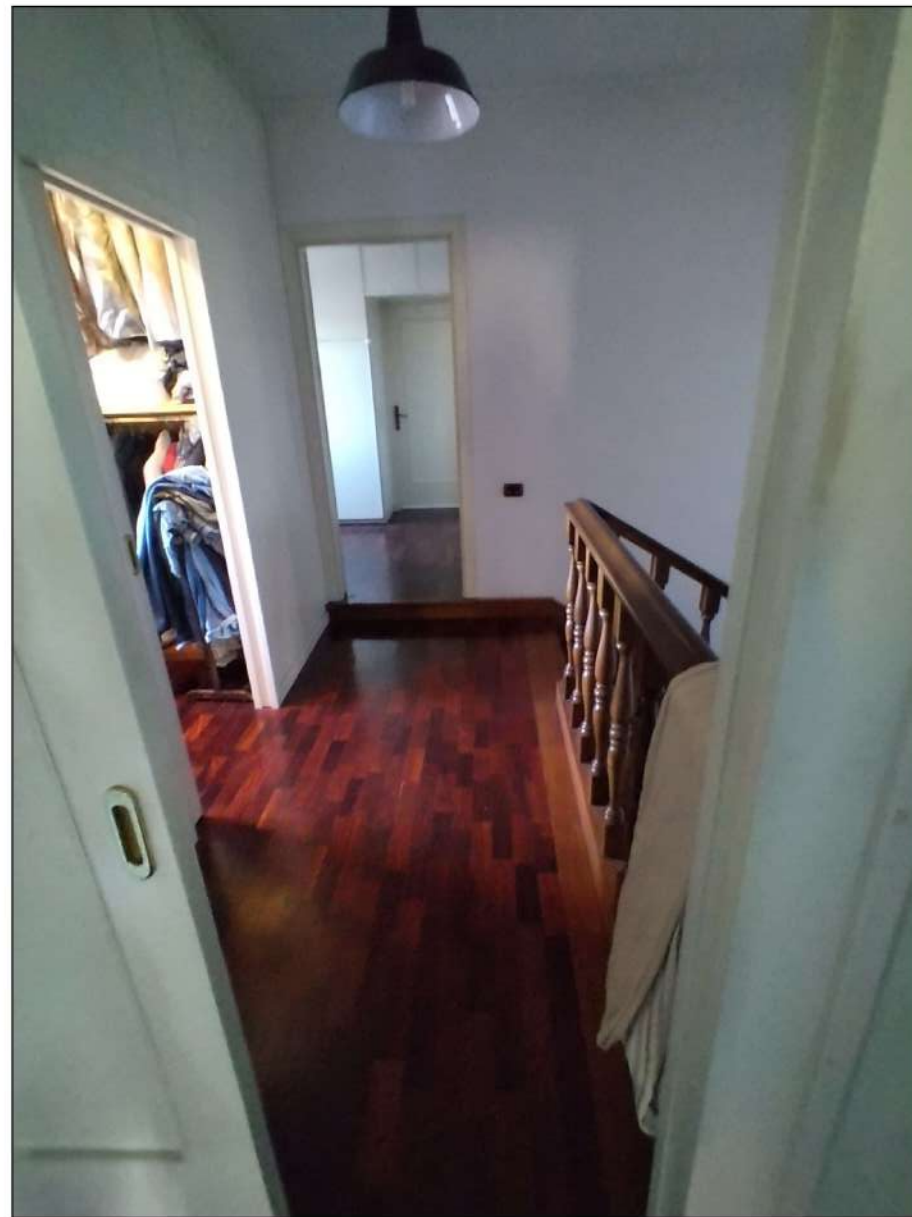


foto 39 - disimpegno



foto 40 - cabina armadio

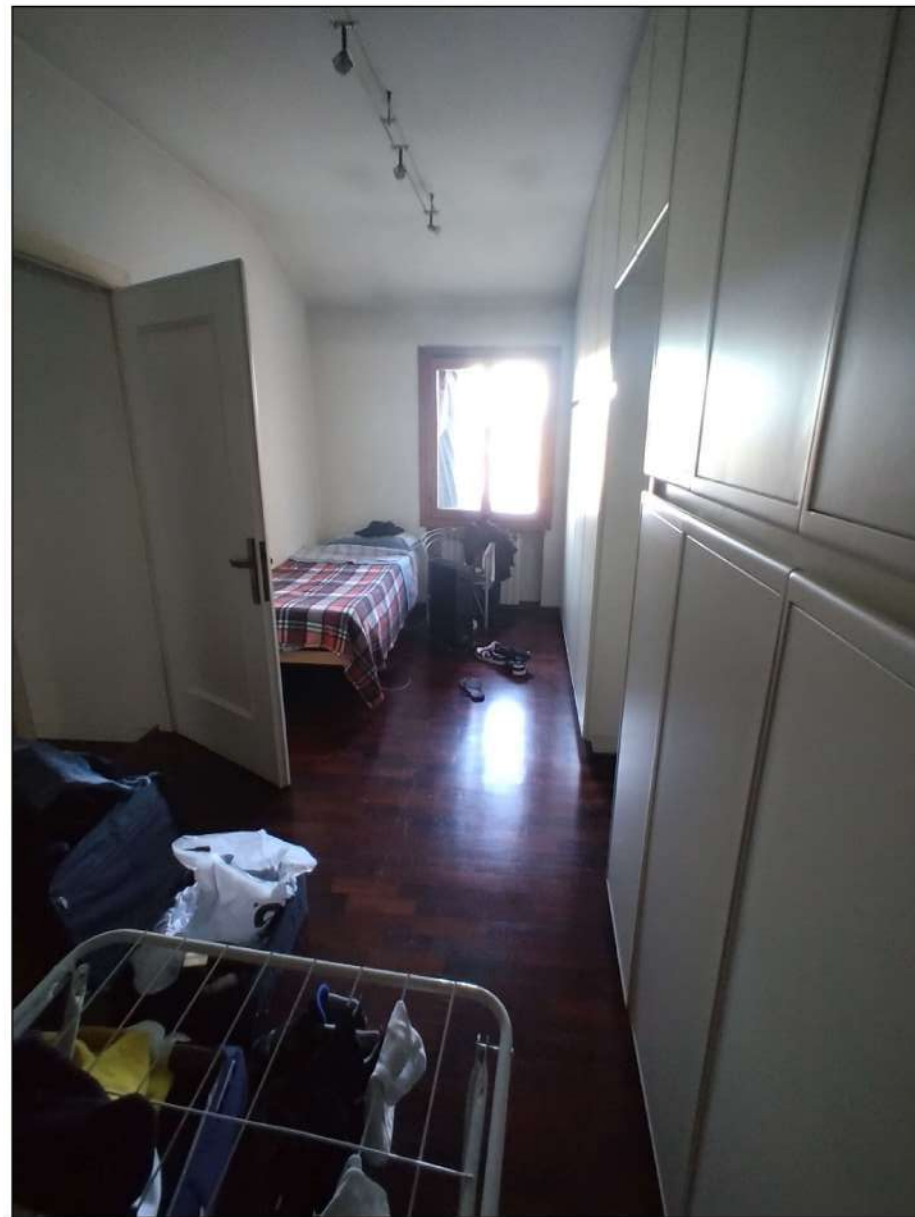


foto 41 - disimpegno



foto 42 - disimpegno



foto 43 - camera



foto 44 - camera

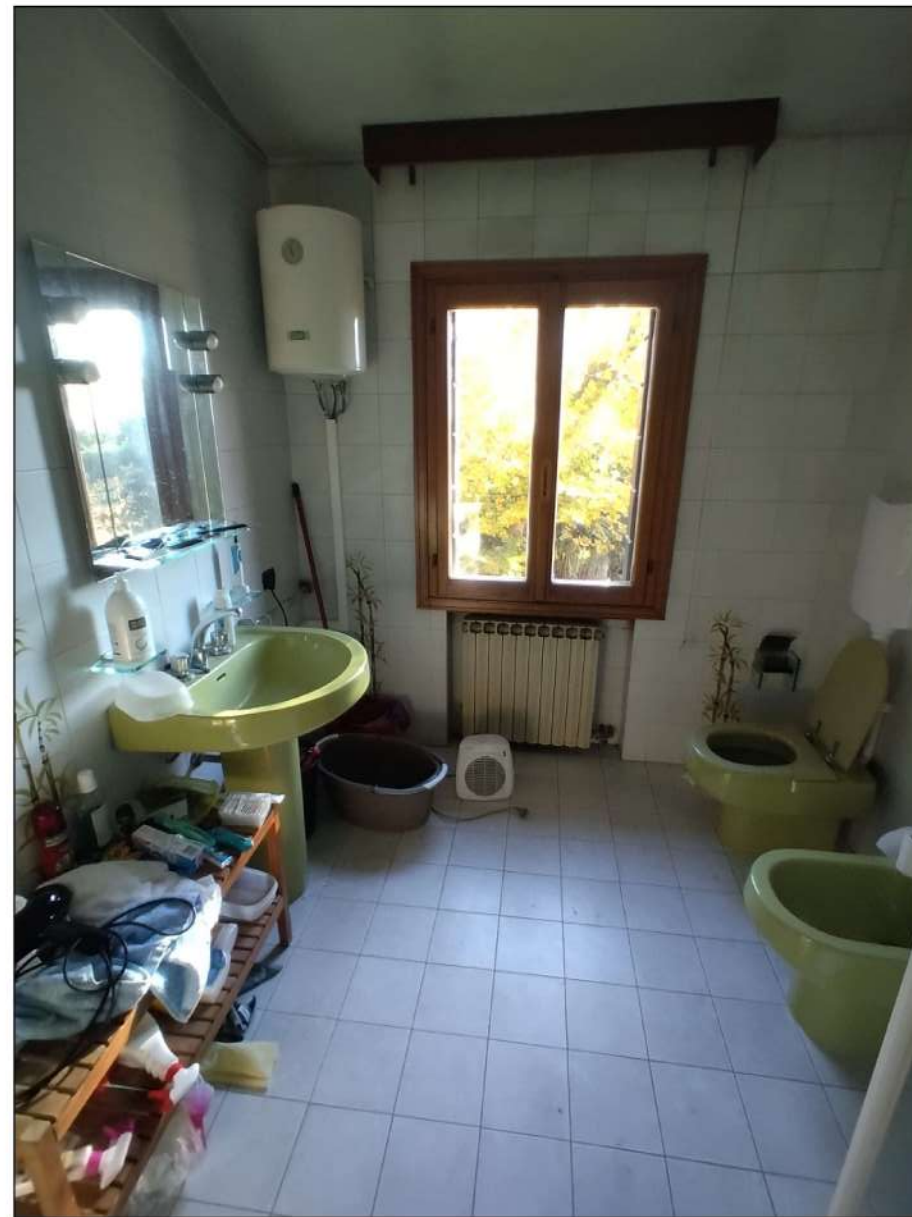


foto 45 - bagno

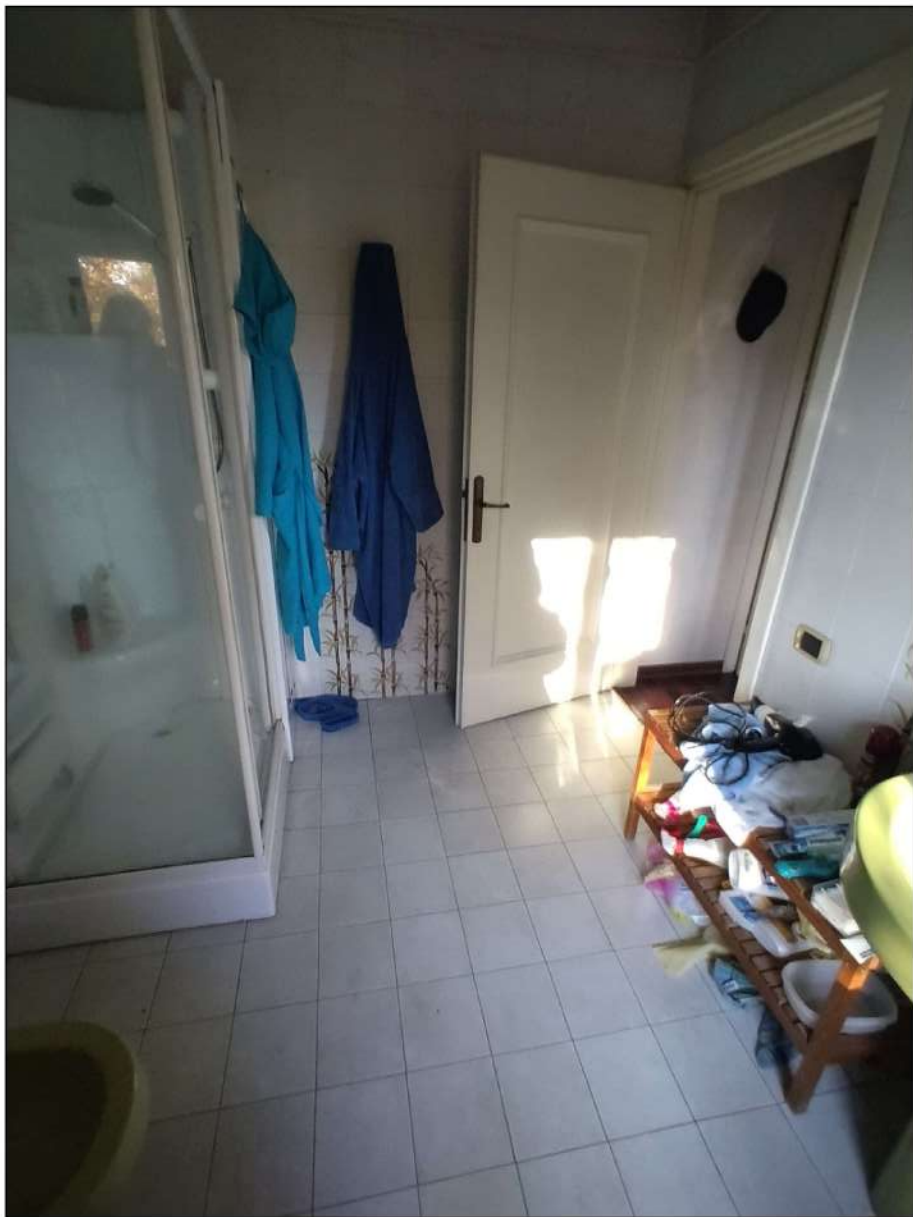


foto 46 - bagno