

TRIBUNALE ORDINARIO DI CHIETI
SEZIONE IMMOBILIARE

CONSULENZA TECNICA D'UFFICIO

nel procedimento esecutivo immobiliare n° 113/2019 R.G.E.

ALLEGATO “D”

Planimetrie attuali immobili

IMMOBILI SITI IN CHIETI

- A) Appartamento in Via Silvino Olivieri n° 195 (fg. 29 p.lla 257 sub 22)
- B) Autorimessa in Via Silvino Olivieri n° 94 (fg. 35 p.lla 12 sub 103)
- C) Negozio in Via Smeraldo Vincenzo Zecca n° 15 (fg. 35 p.lla 849 sub 8)

Il Consulente Tecnico d'Ufficio
(Geom. Claudio Belisari)



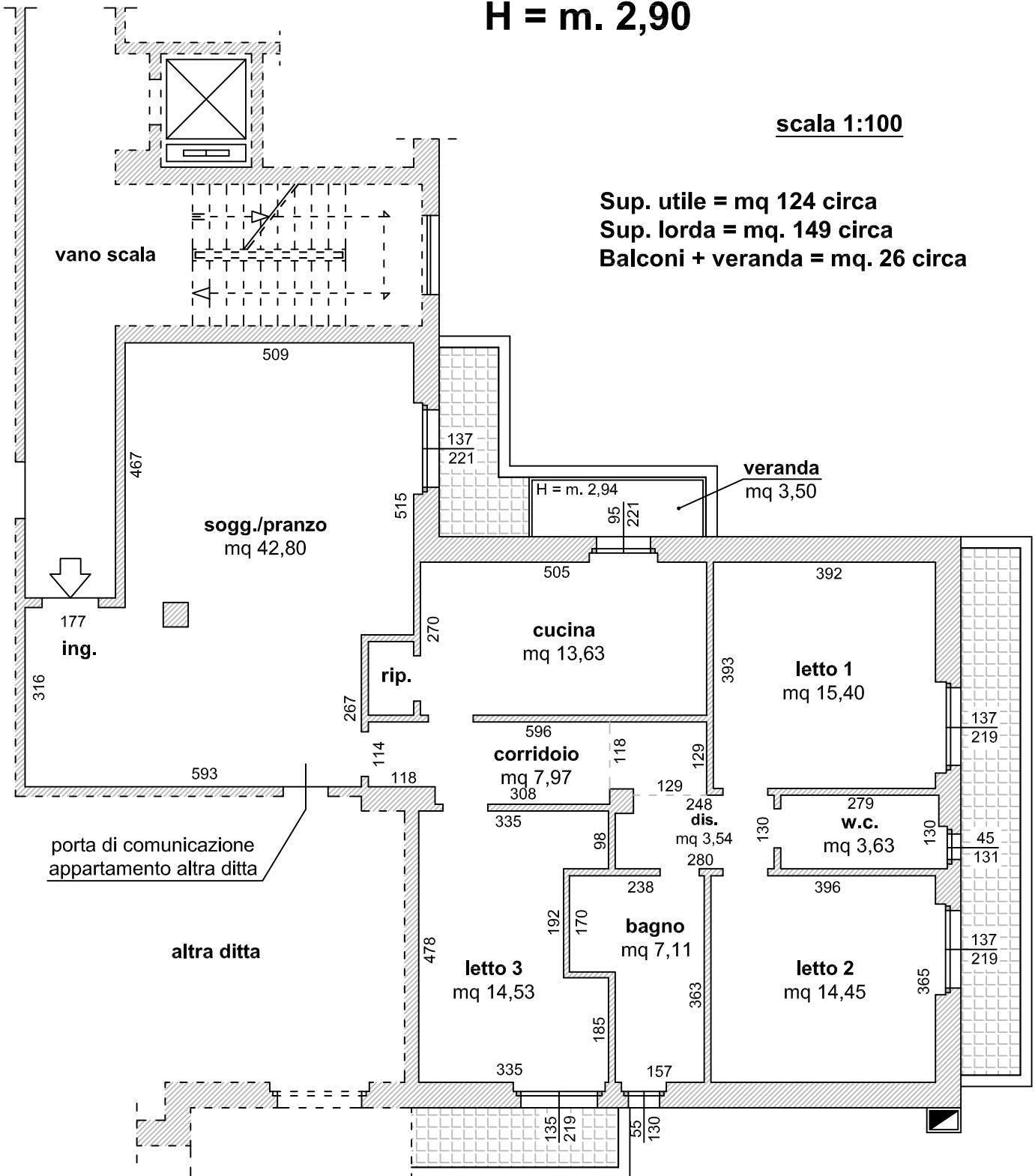
PIANO QUARTO

A) Appartamento

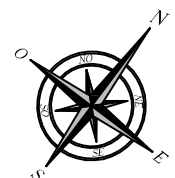
H = m. 2,90

scala 1:100

Sup. utile = mq 124 circa
 Sup. lorda = mq. 149 circa
 Balconi + veranda = mq. 26 circa



ORIENTAMENTO



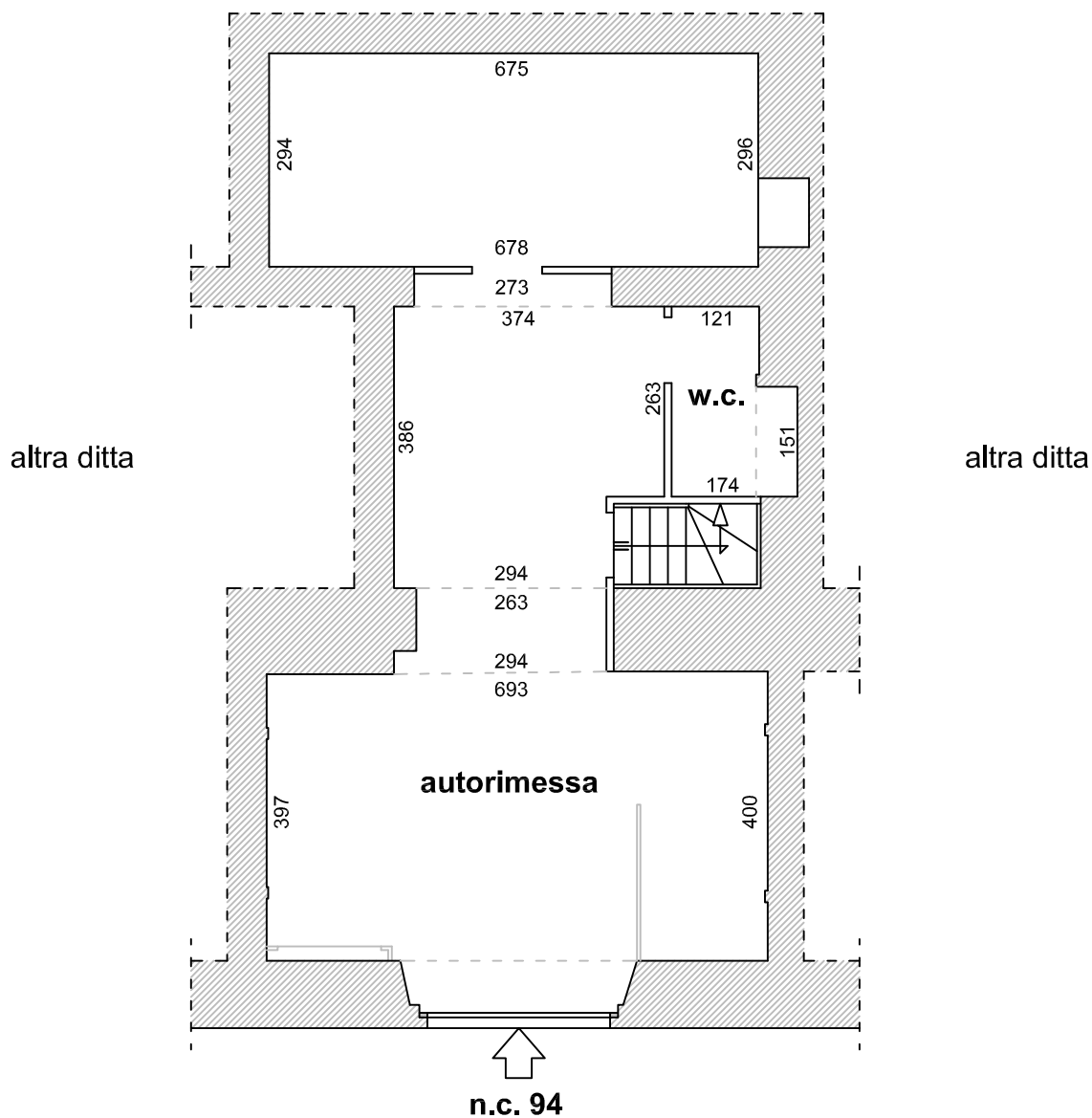
PIANO TERRA

B) Autorimessa

H = m. 2,90 ca.

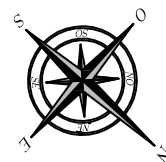
scala 1:100

Sup. utile = mq 71 circa
Sup. lorda = mq. 97 circa



Via Silvino Olivieri

ORIENTAMENTO



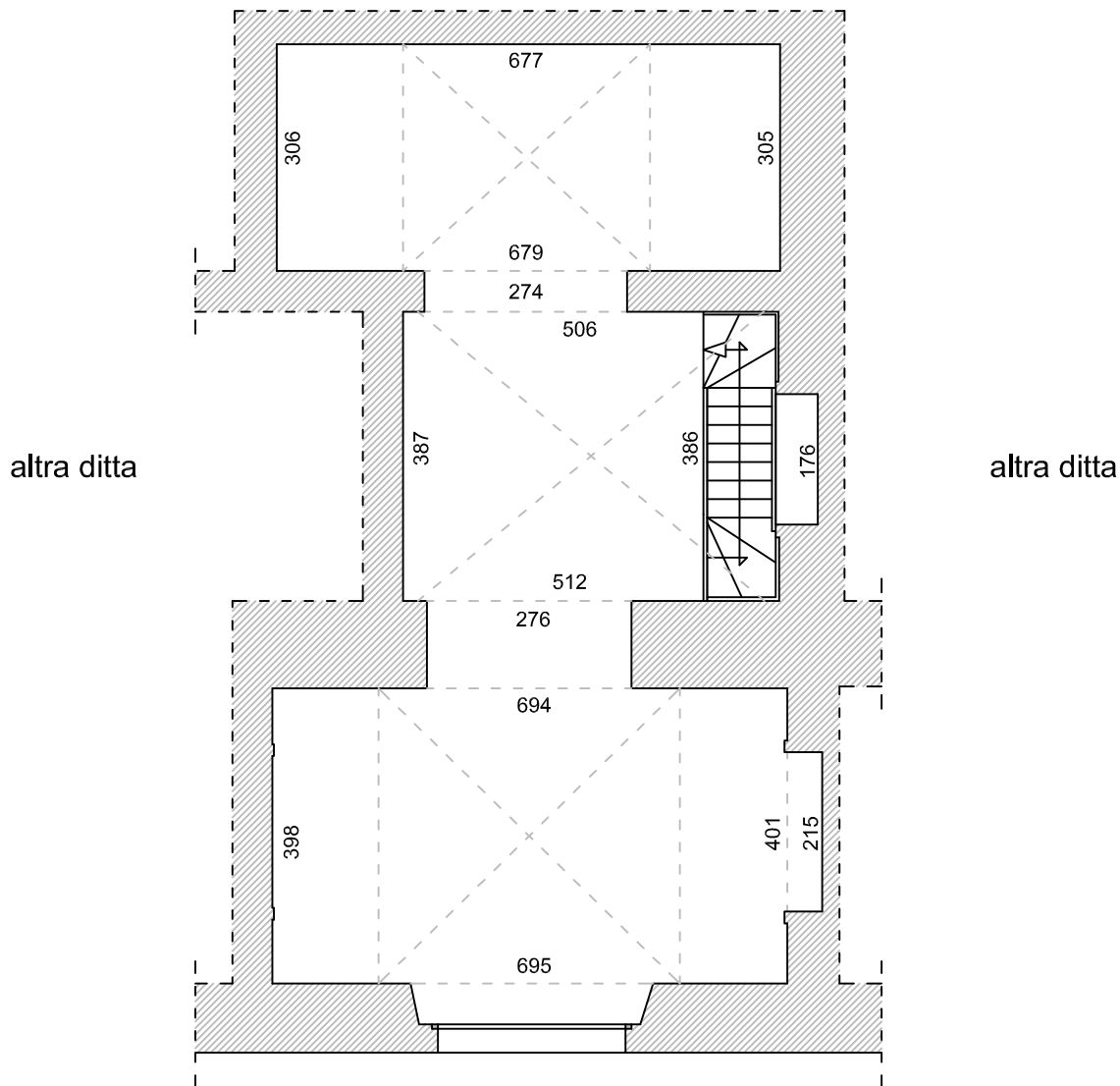
PIANO AMMEZZATO

B) Autorimessa

H = m. 2,85 ca.

scala 1:100

Sup. utile = mq 74 circa
Sup. lorda = mq. 98 circa



Via Silvino Olivieri

ORIENTAMENTO



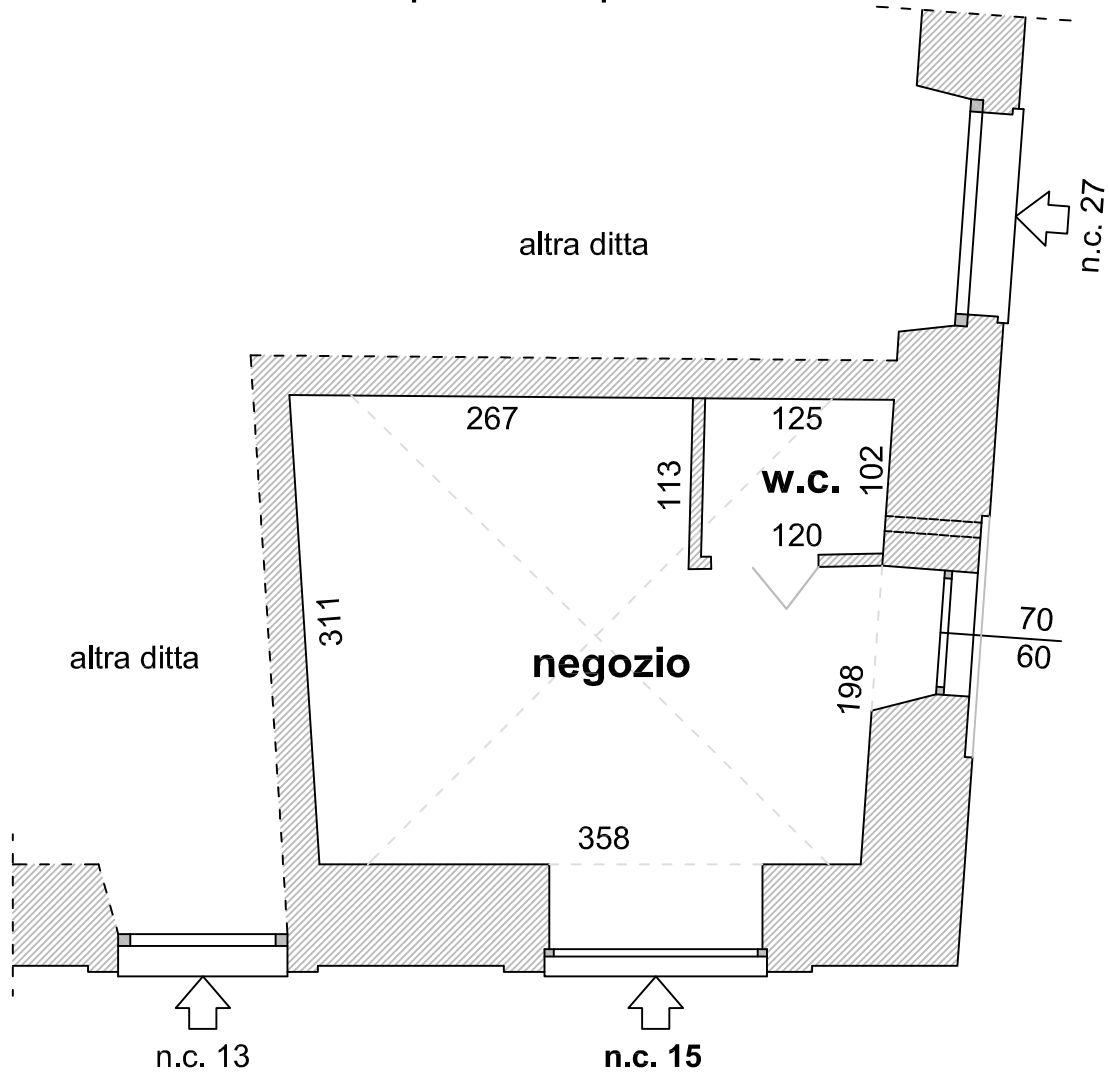
PIANO TERRA

C) Negozio

H = m. 2,50

scala 1:50

Sup. utile = mq 12 circa
Sup. lorda = mq. 18 circa



Via S. V. Zecca

Via G. Ravizza

ORIENTAMENTO

