

Rosario Andrea Cristelli
Architetto

Via Antonino Isaia Abate, 11 - 98051
Barcellona Pozzo di Gotto (Me)
Tel. 329.3348123
PEC: rosarioandrea cristelli bodar@archiworldpec.it

Consulenza tecnica d'ufficio procedura n°30/2019 R.G.Es
Tribunale di Barcellona Pozzo di Gotto,

ALLEGATO FOTOGRAFICO

RILIEVO FOTOGRAFICO

CORPO A

CORPO B

22 ottobre 2025

L'Esperto
Arch. Rosario Andrea Cristelli



CORPO A

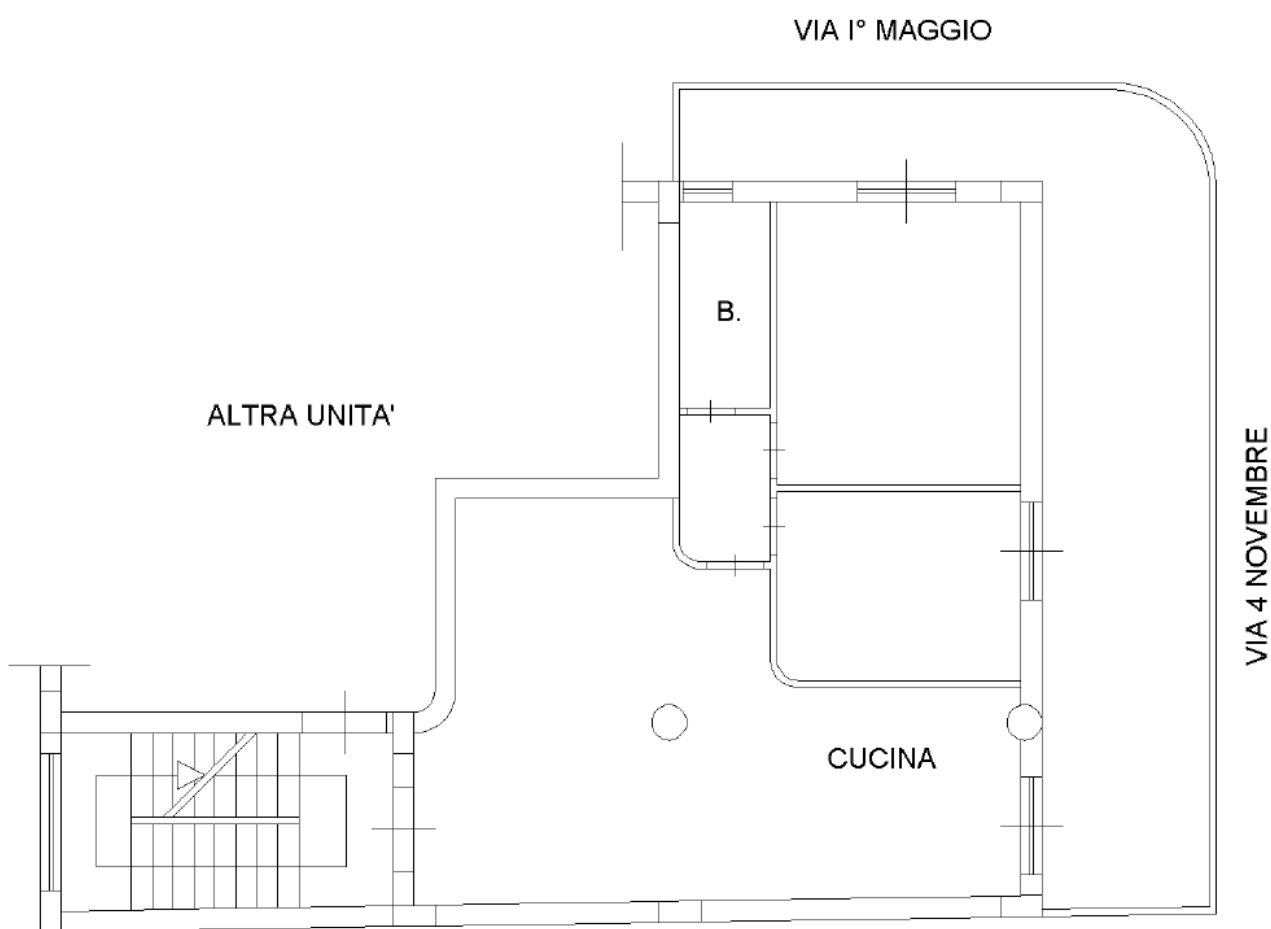




Foto 1



Foto 2





Foto 3





Foto 4



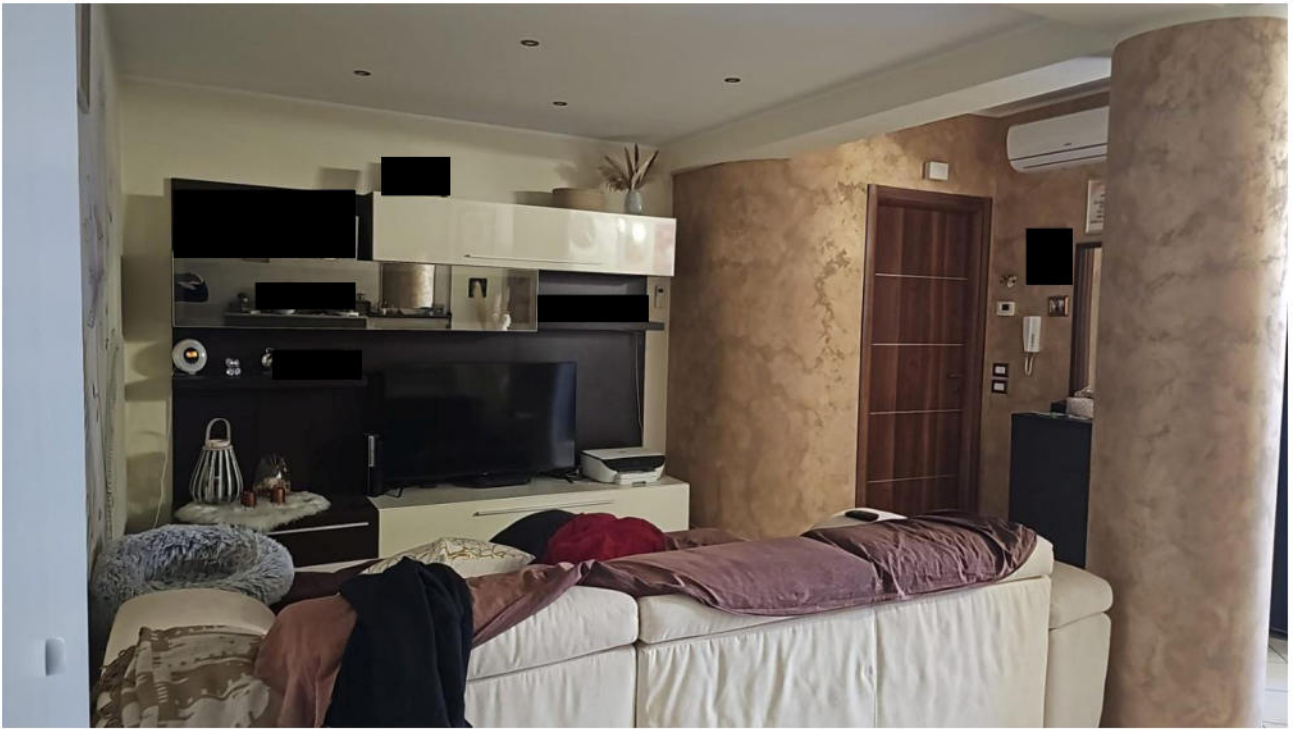


Foto 5



Foto 6



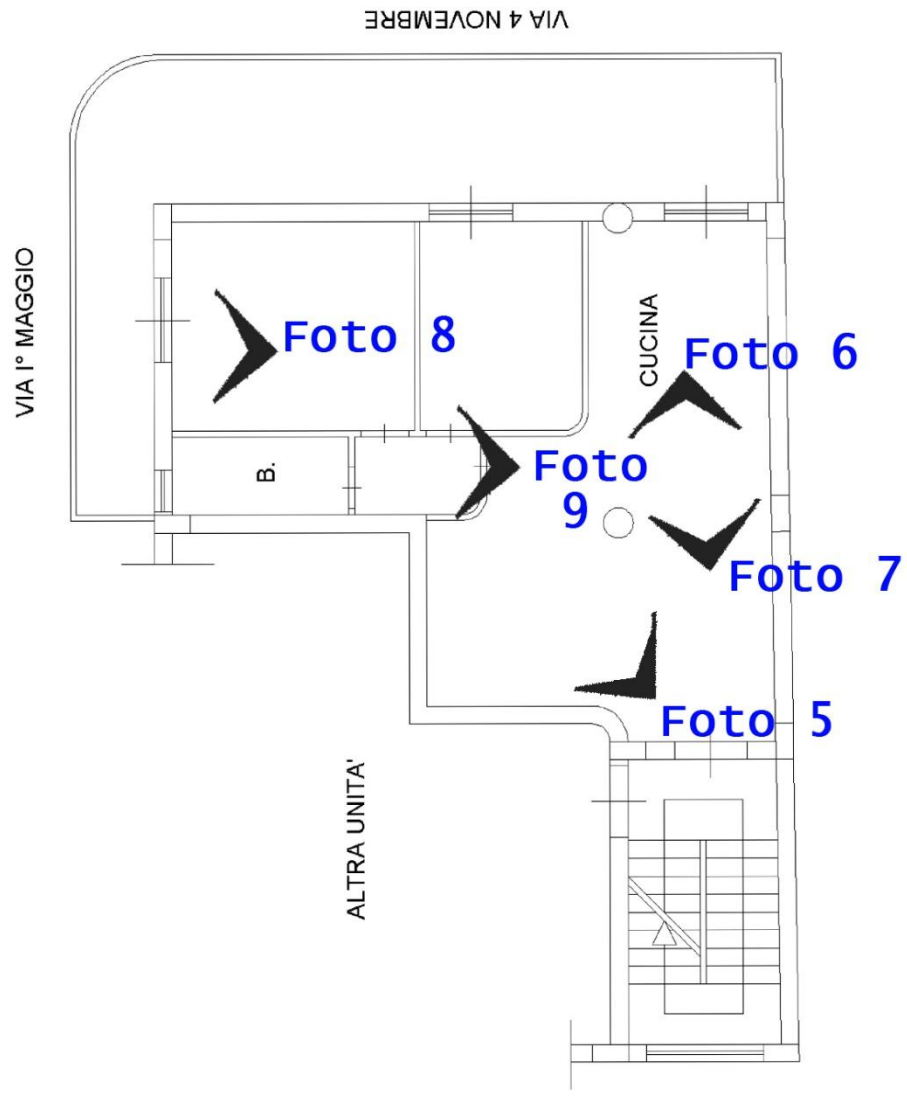




Foto 7



Foto 8





Foto 9



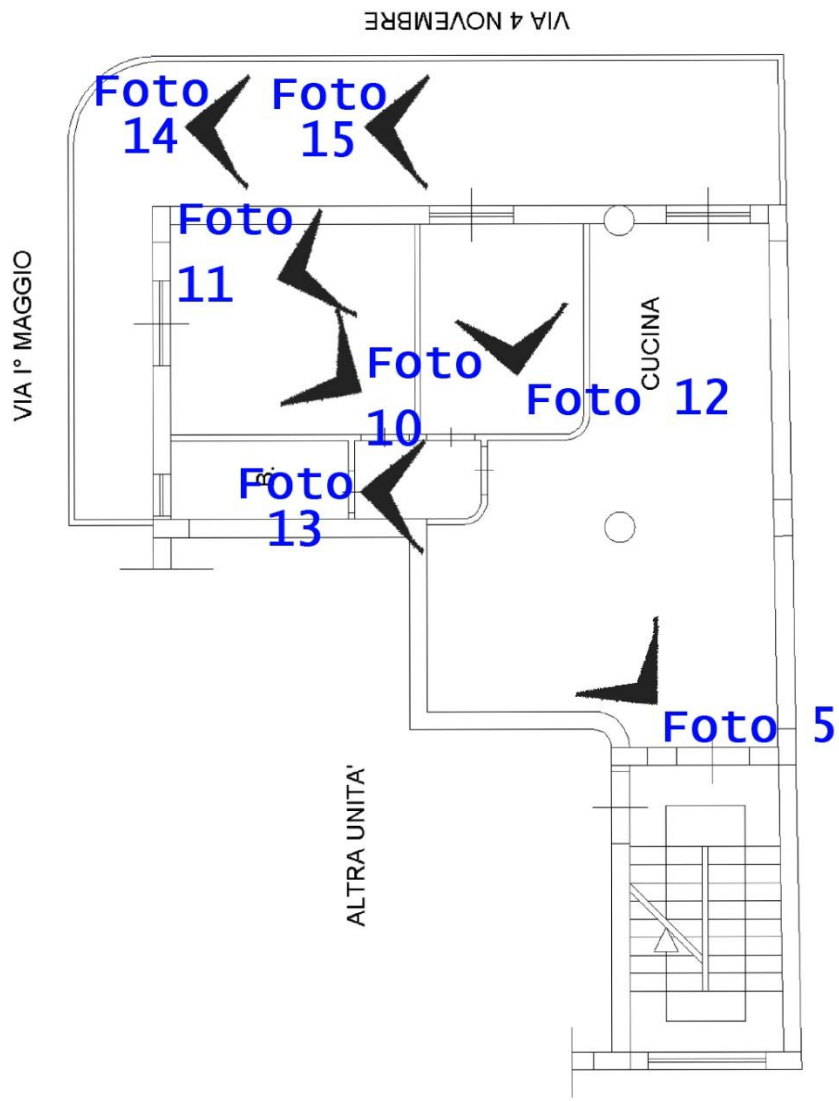




Foto 10





Foto 11





Foto 12





Foto 13





Foto 14





Foto 15

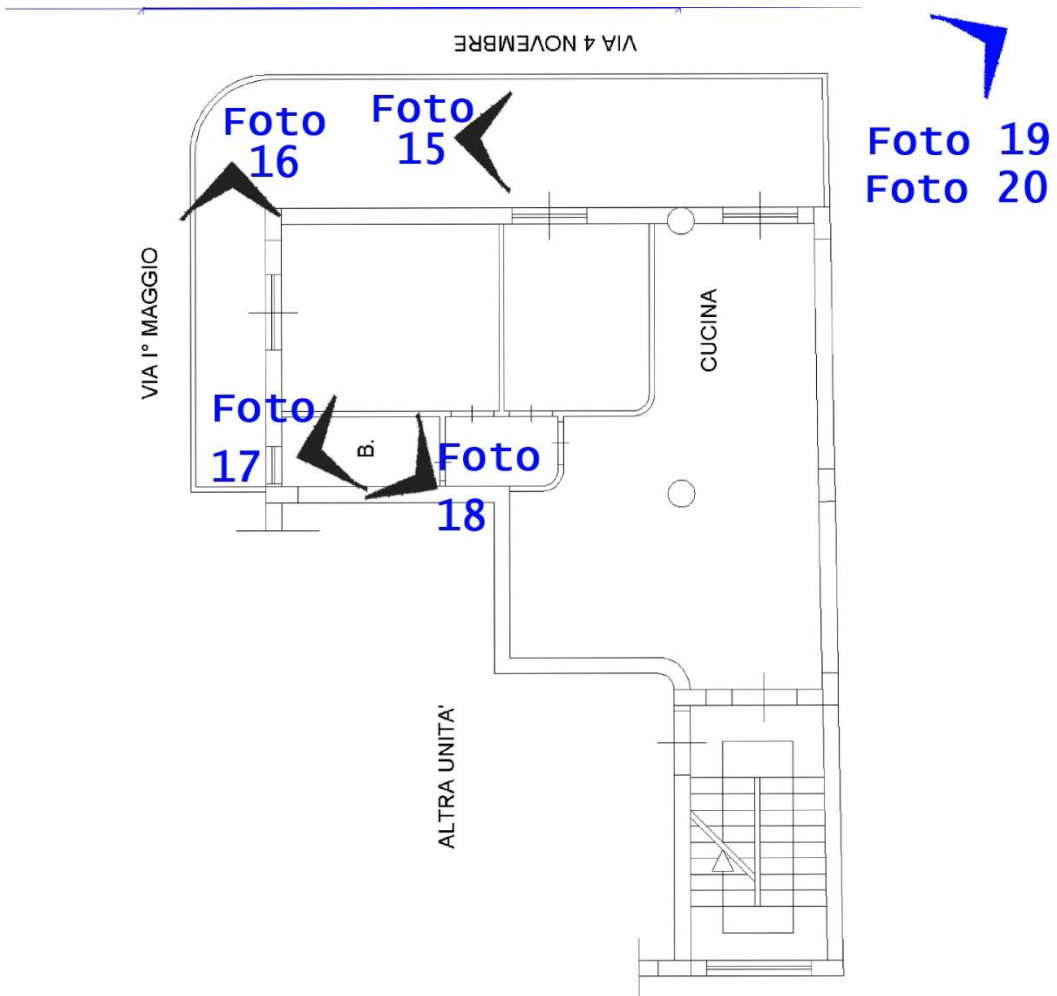




Foto 16





Foto 17





Foto 18





Foto 19

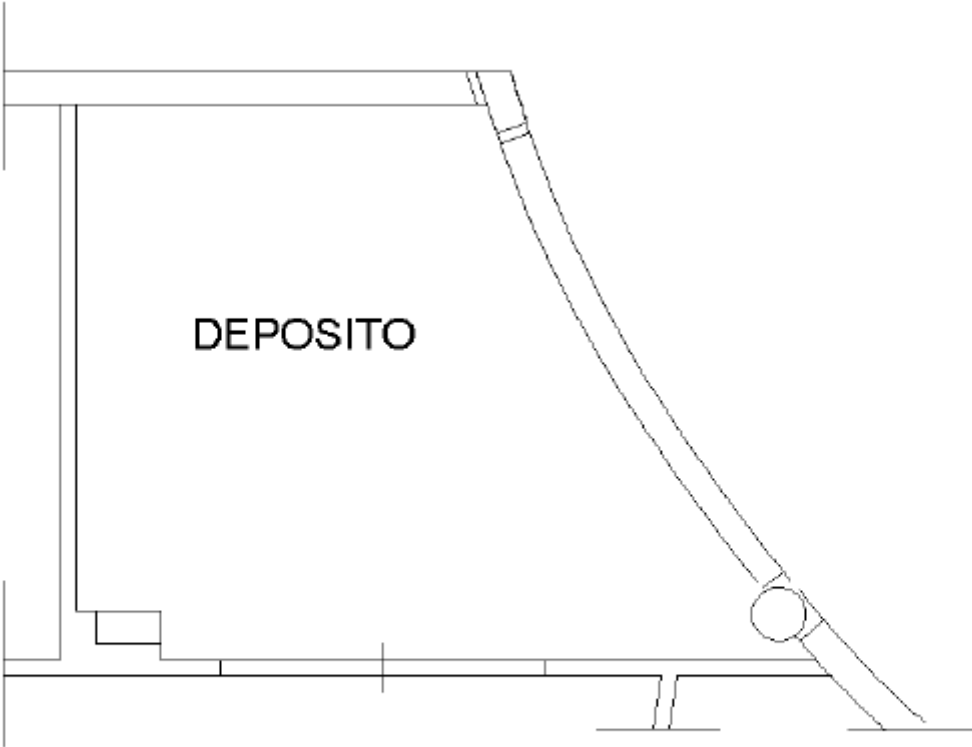




Foto 20



CORPO B



ALTRA UNITA'





Foto 21





Foto 22



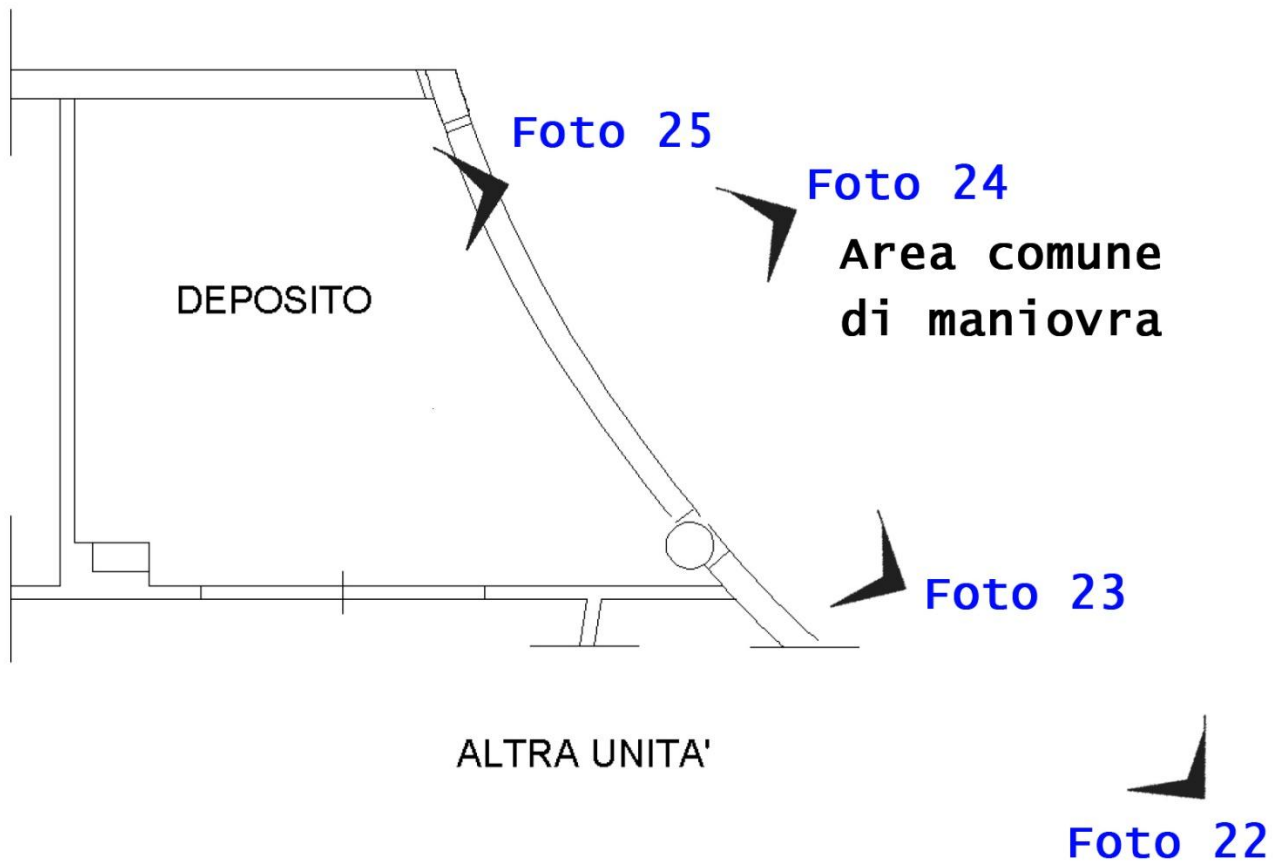




Foto 23





Foto 24



Foto 25





Foto 26

