

**TRIBUNALE DI PAVIA SEZIONE  
FALLIMENTARE**

**PERIZIA DI STIMA IMMOBILI  
NEL COMUNE DI VALENZA**

***ALLEGATO 3***

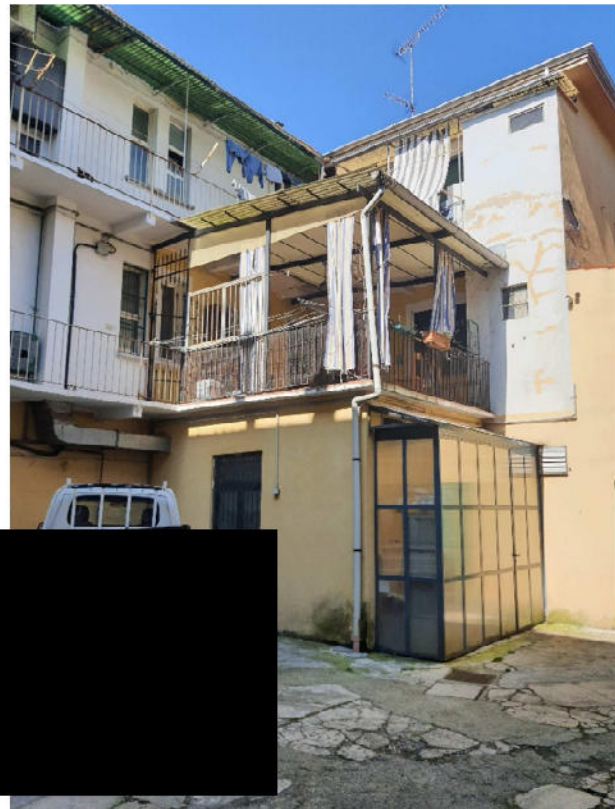
*COMUNE DI VALENZA*

***Documentazione fotografica***

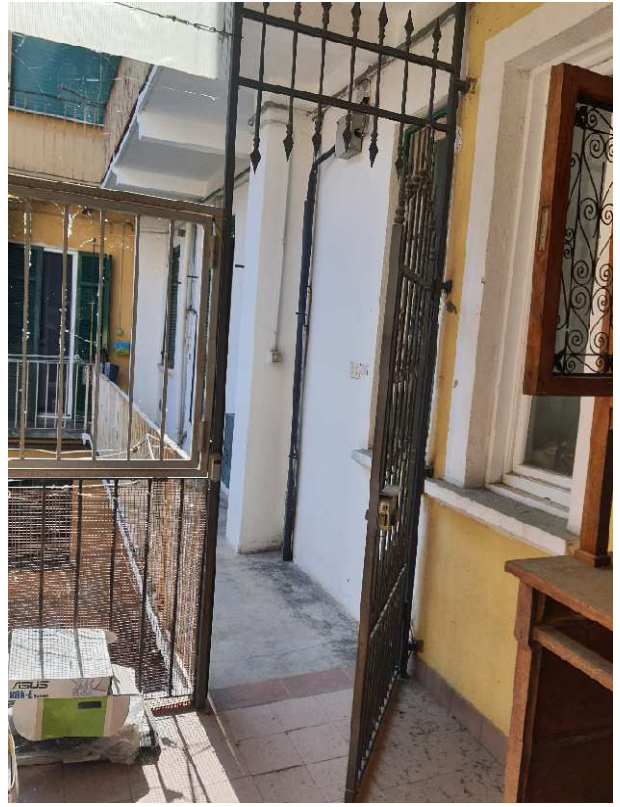


Documentazione Fotografica

ESTERNI



Geom. ROMANI ELISA  
Provvisoria Geom. N. 2220  
CAREZZANO

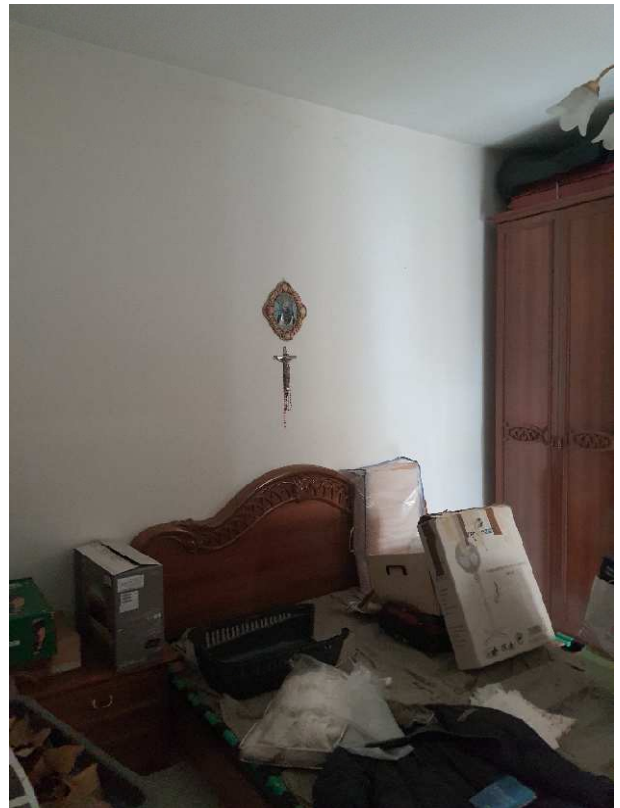
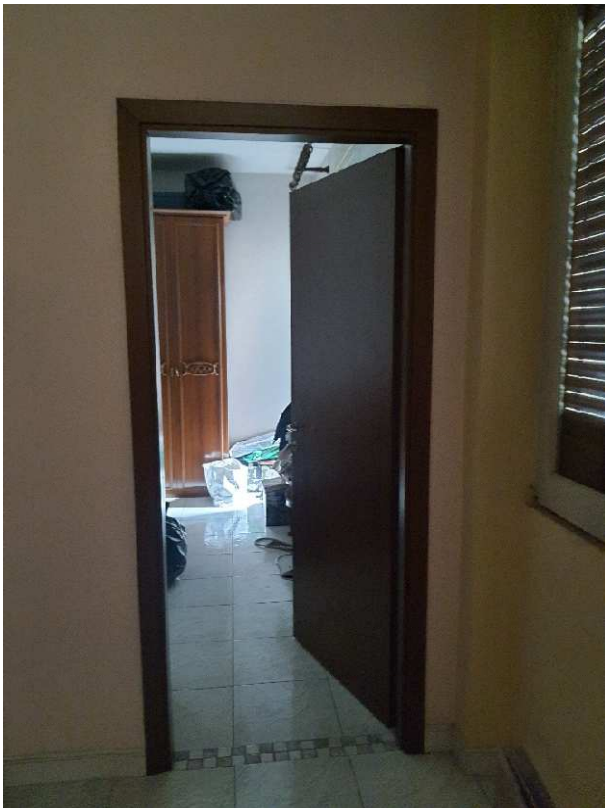
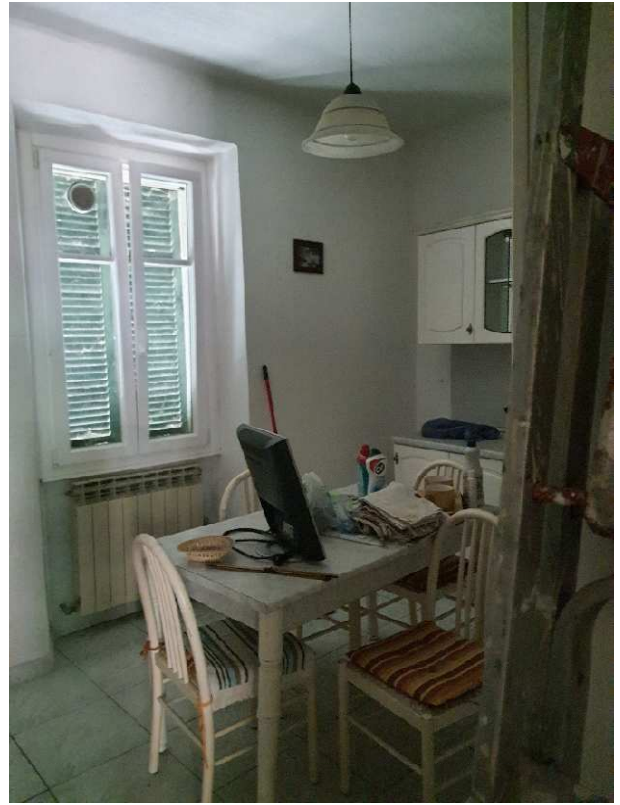


Geom. ROMANI ELISA  
Lo Provinciale Geom. 2220  
CAREZZANO

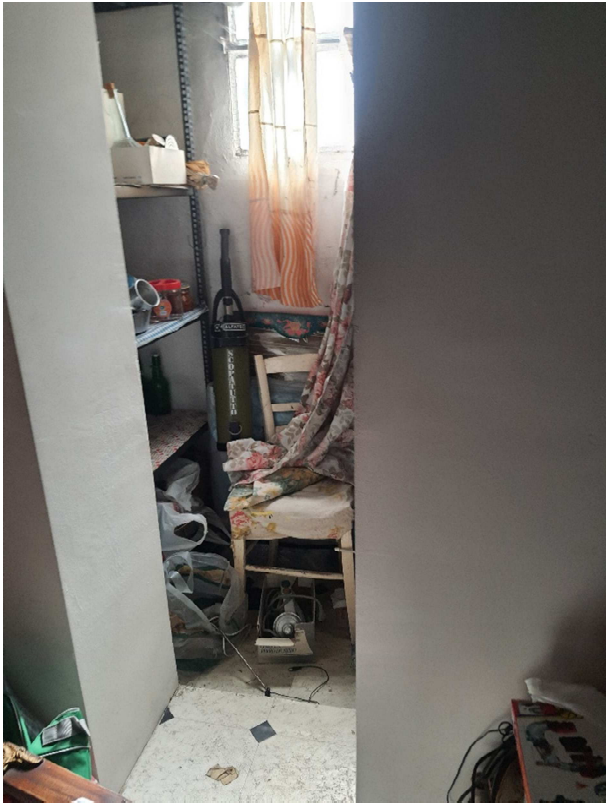
# INTERNI



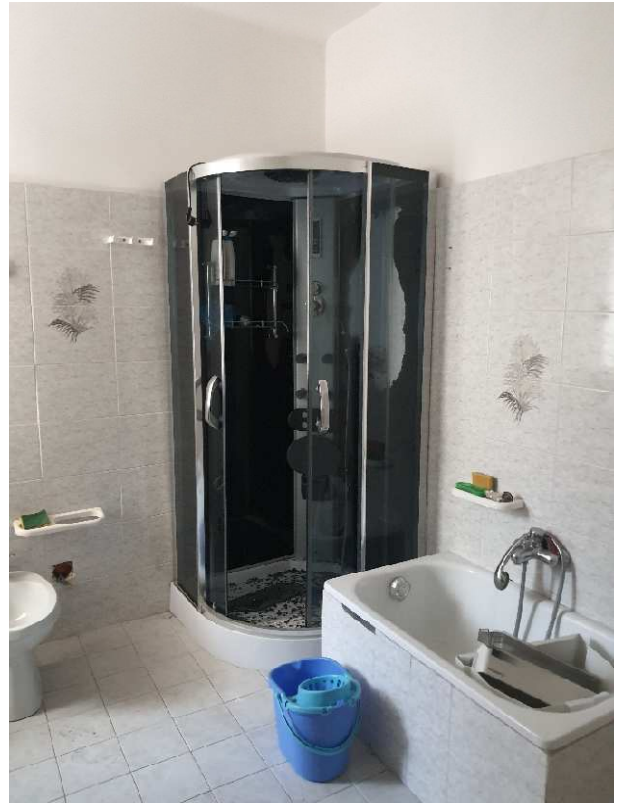
Geom. ROMANI ELIA  
Provinciale Geom. Mess.  
N. 2220  
CAREZZANO



Geom. ROMANI ELISA  
Provinciale Geom. Mess.  
N. 2220  
CAREZZANO



Geom. ROMANI ELISA  
Provincia Geom. Massa  
N. 2220  
CAREZZANO



Geom. ROMANI ELISA  
Lo Provvisoriale Geom. N. 2220  
CAREZZANO