

TRIBUNALE DI ASCOLI PICENO  
UFFICIO DEL GIUDICE UNICO – SEDE CENTRALE  
Esecuzione Immobiliare R.E. N°22/2019

**DOCUMENTAZIONE FOTOGRAFICA**



Foto esterna edificio lato sud/est

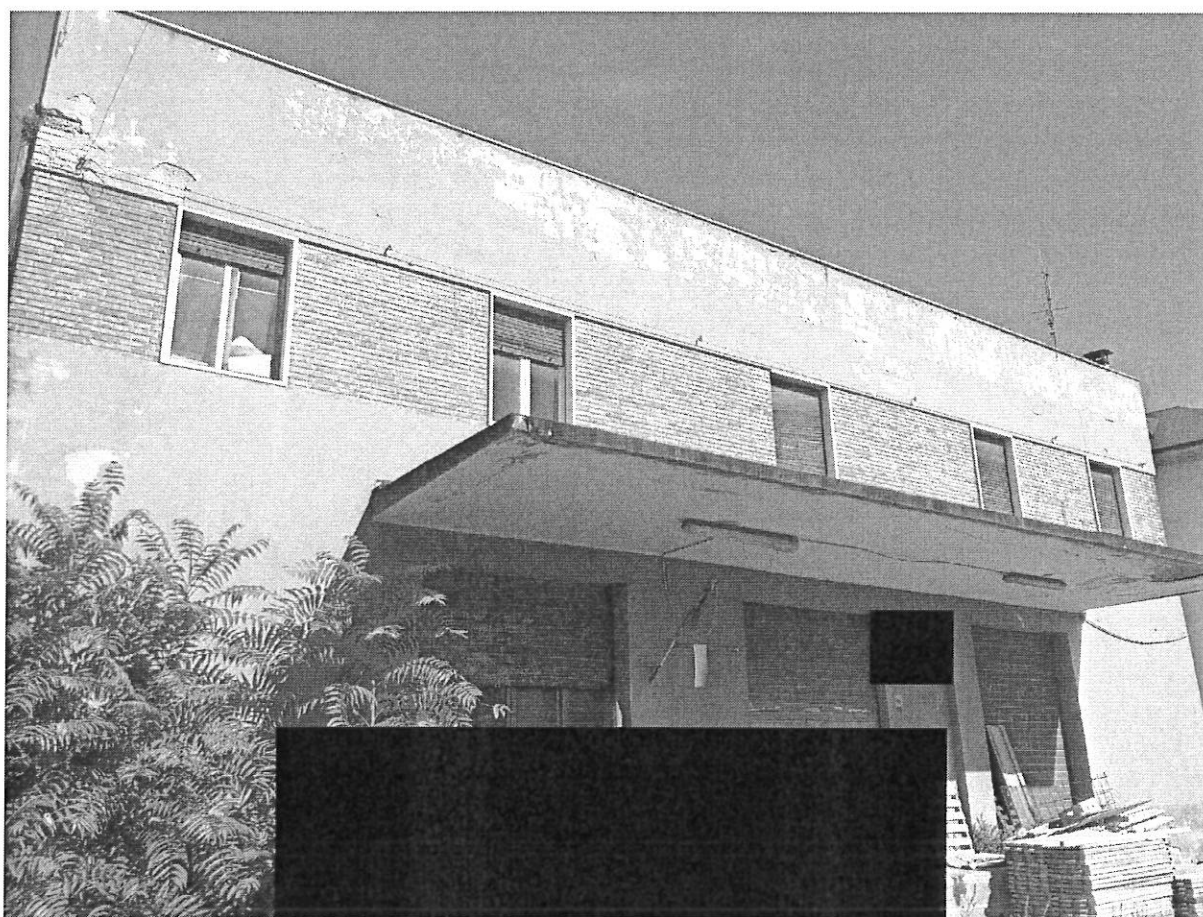


Foto esterna edificio lato sud

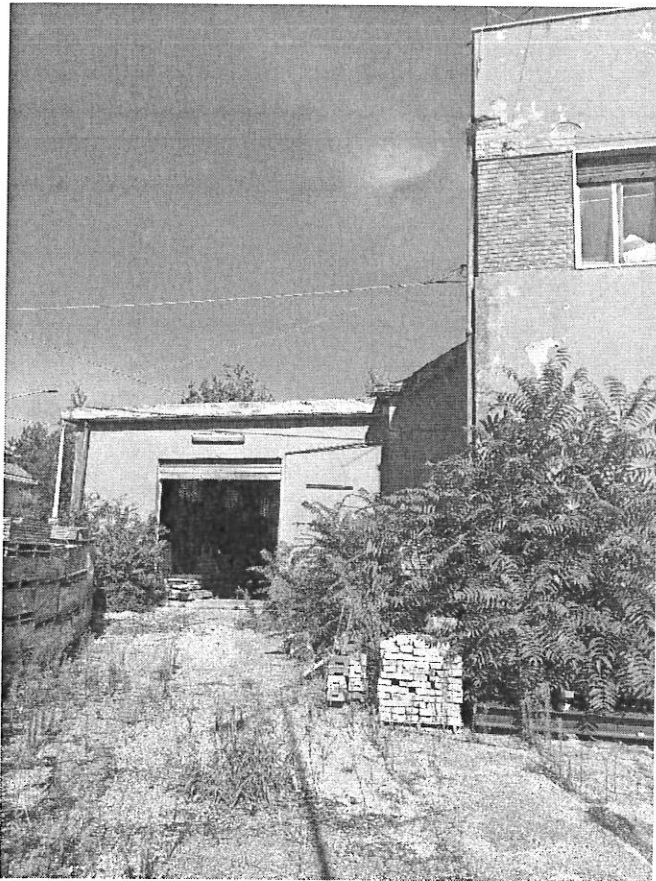


Foto esterna edificio lato ovest

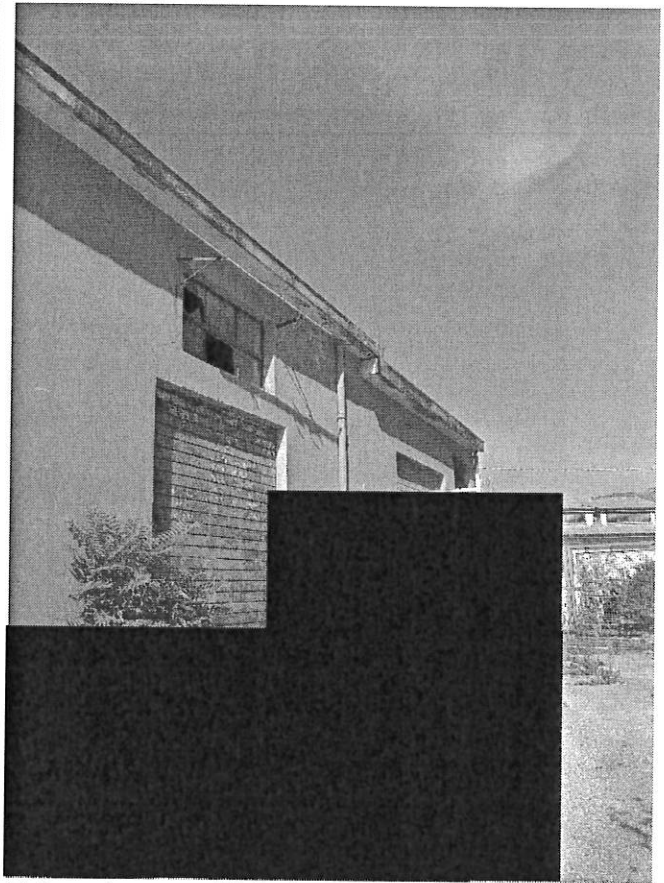


Foto esterna edificio lato est

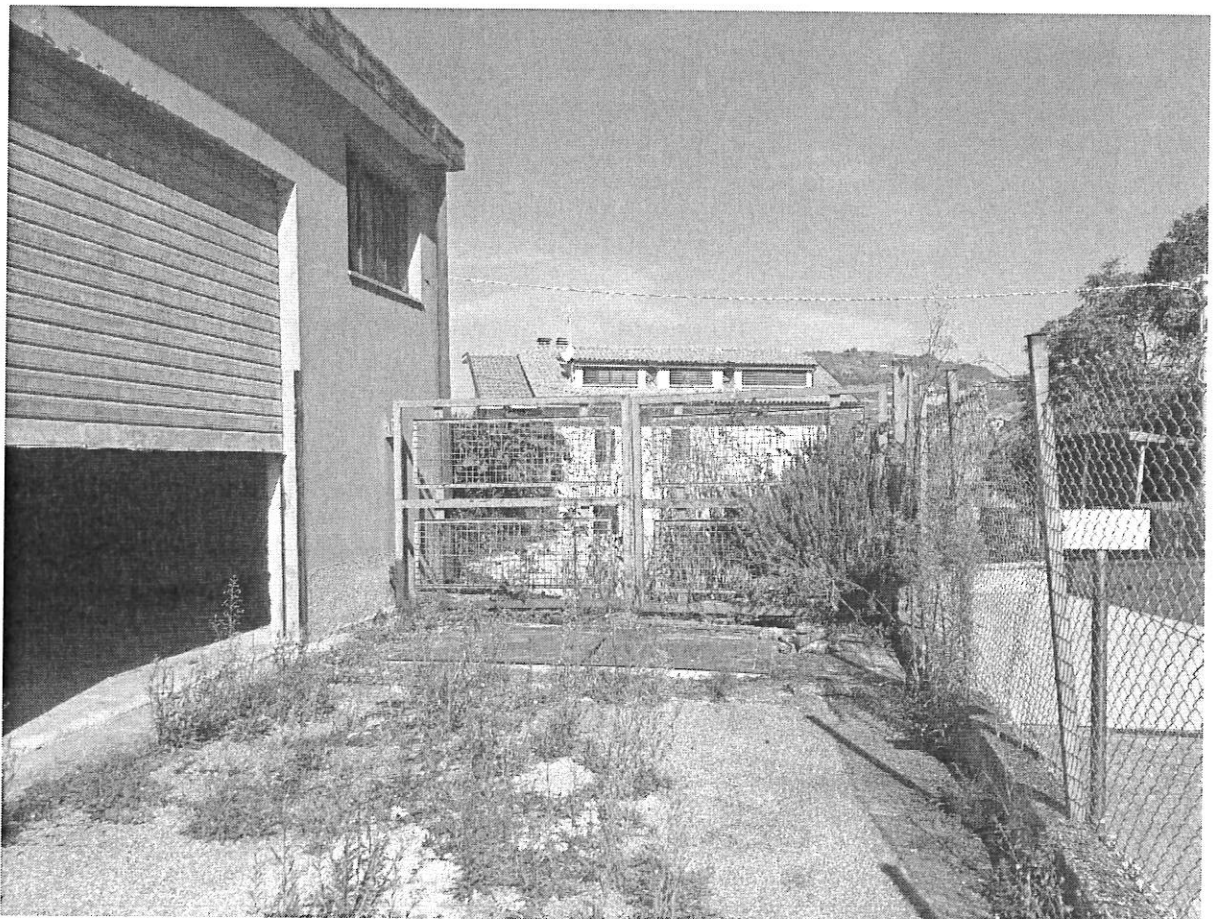


Foto esterna edificio angolo nord/est

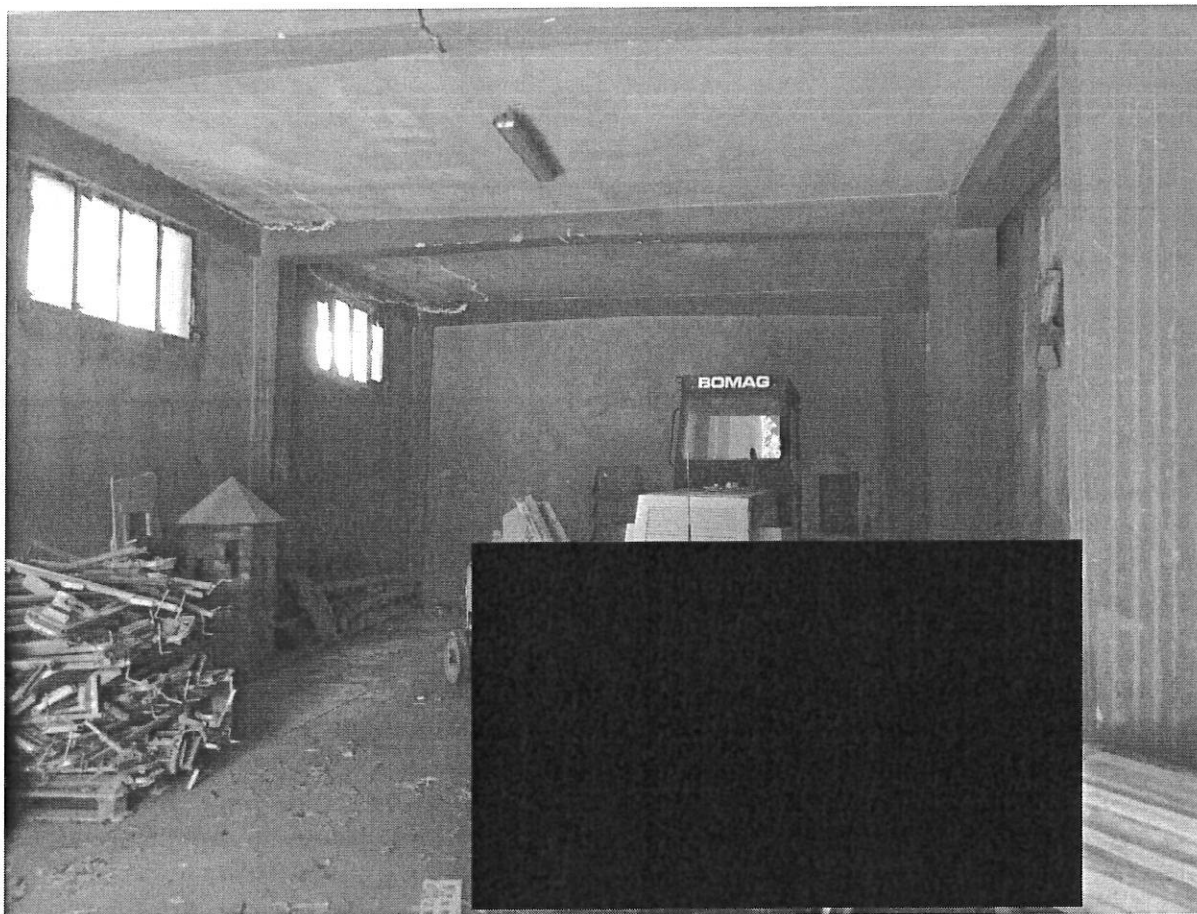


Foto interno locale magazzino lato ovest

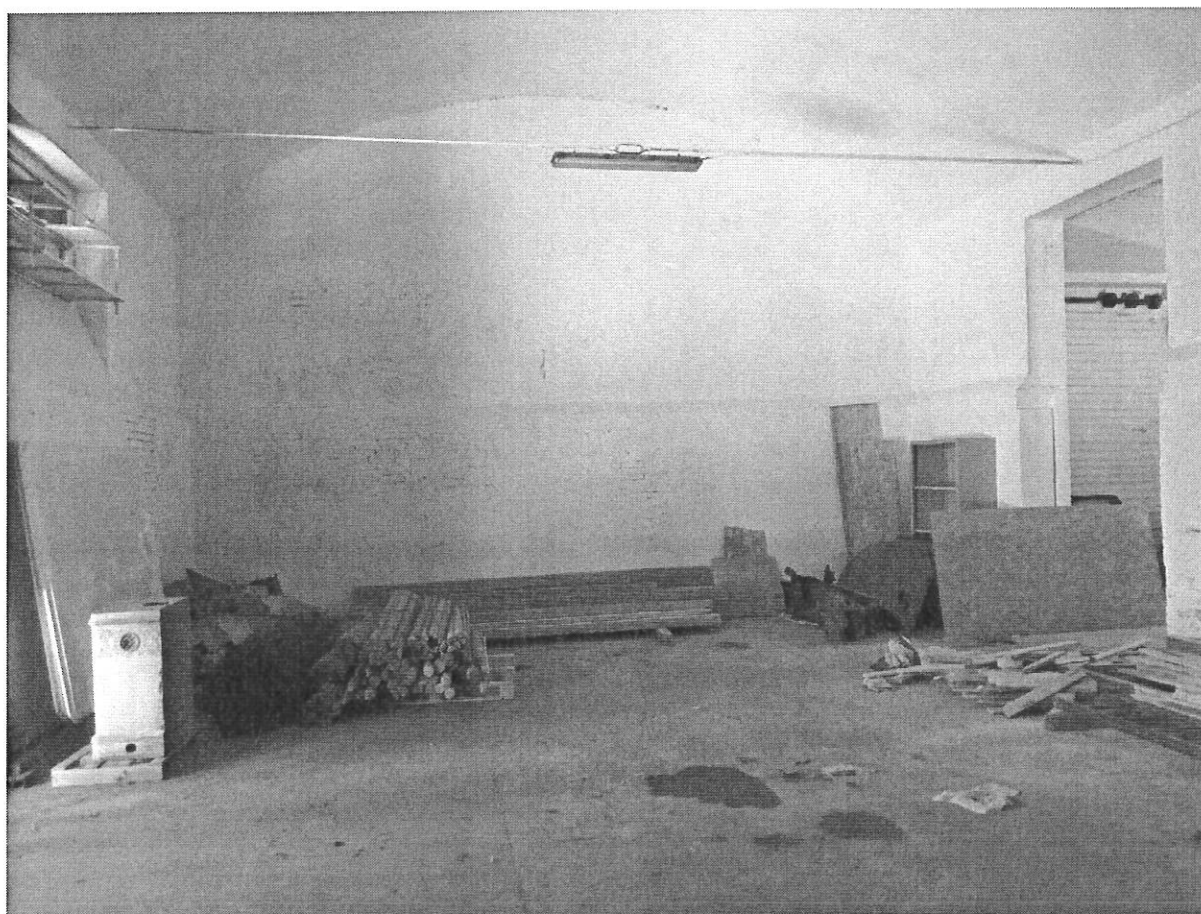


Foto interno locale area vendita lato ovest

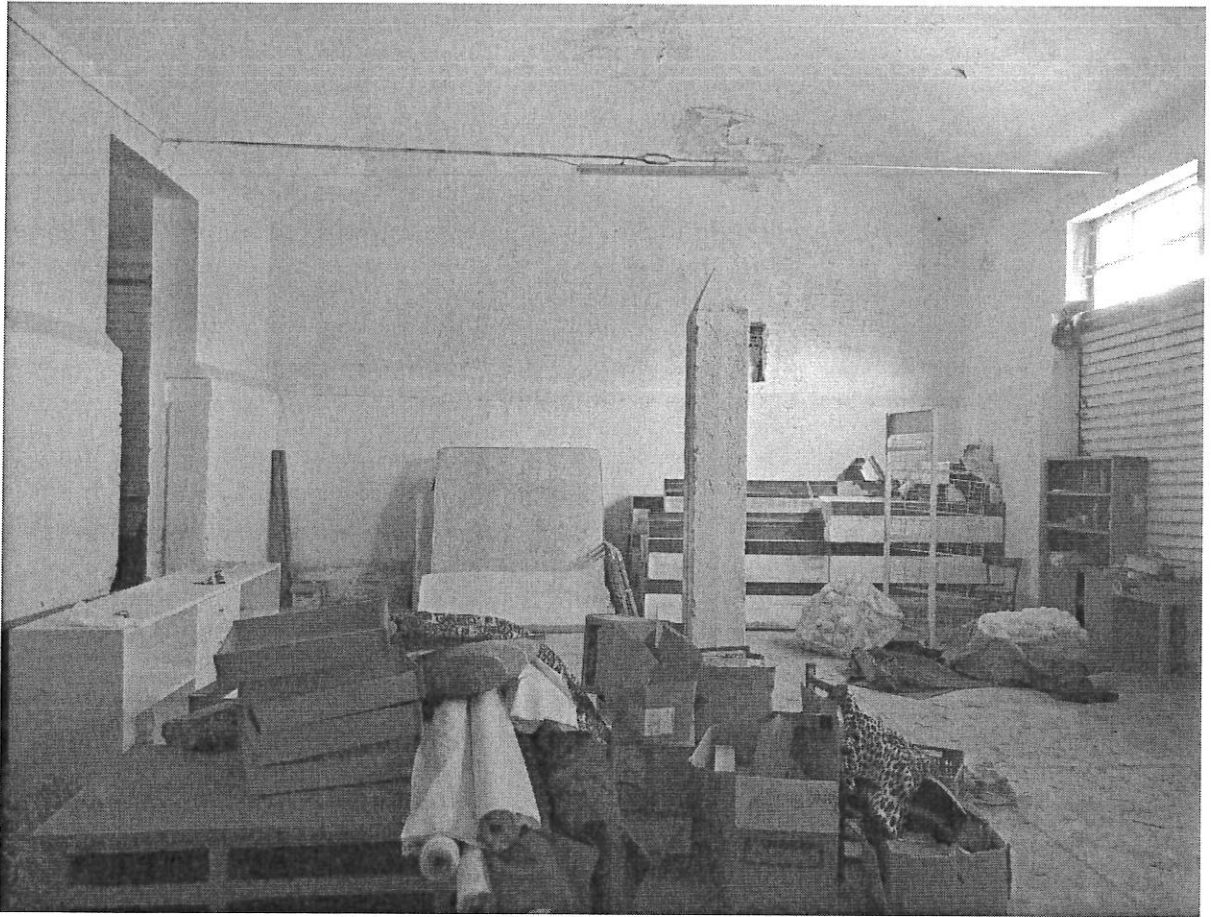


Foto interno locale area vendita lato est



Foto interno locale zona disimpegno centrale



Foto interno locale area magazzino lato nord

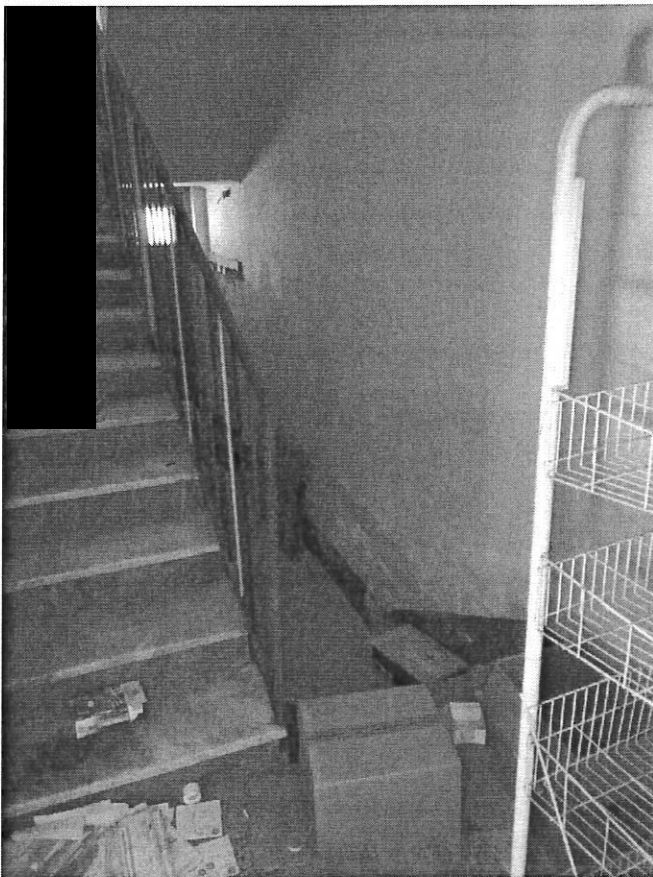
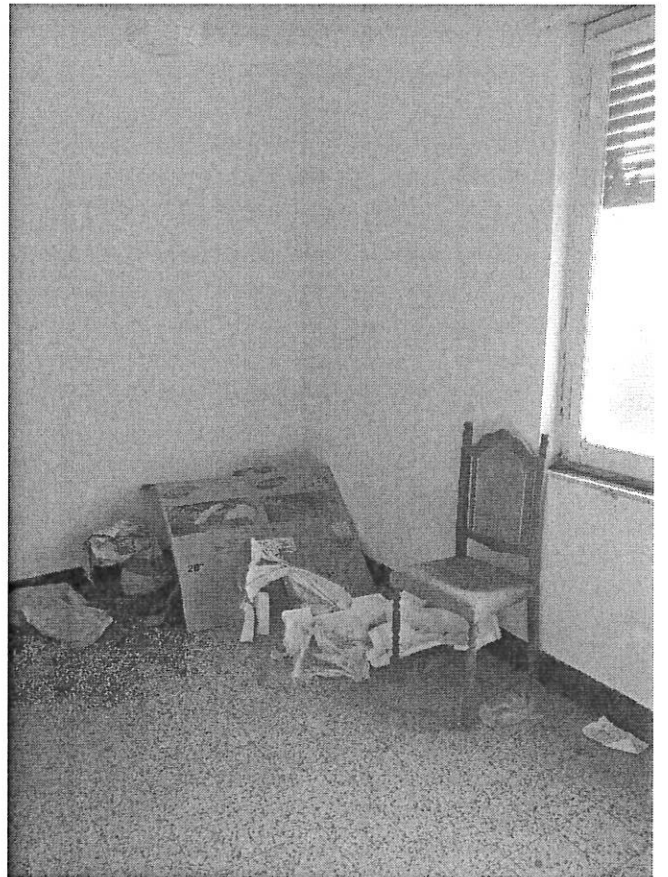
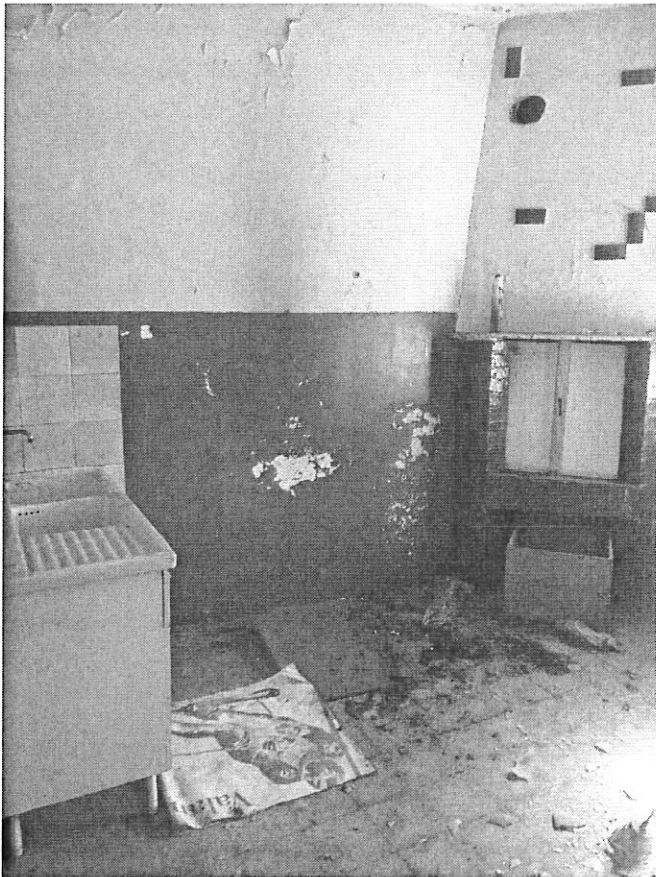
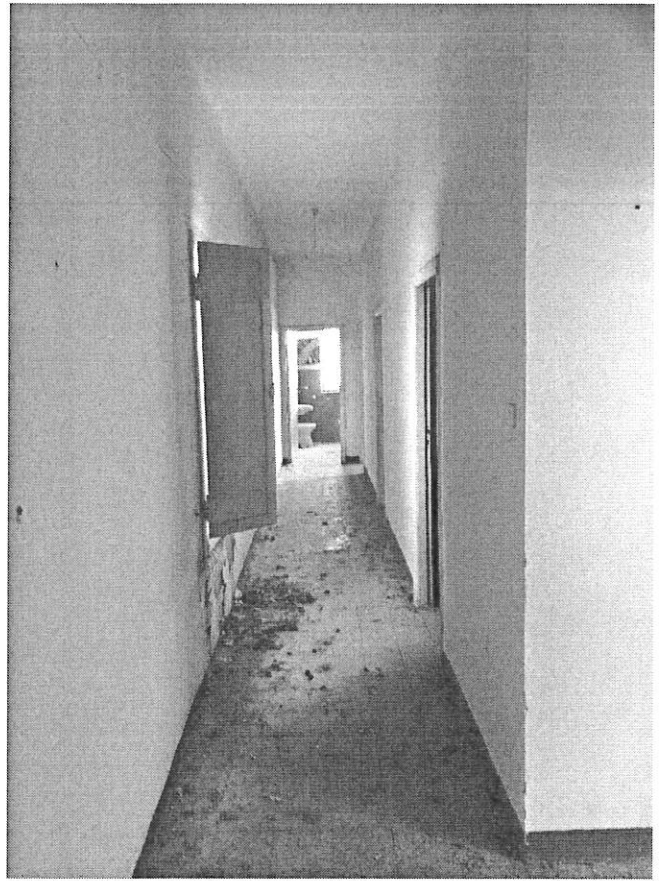


Foto vano scala che collega piano terra con unità abitativa al piano primo



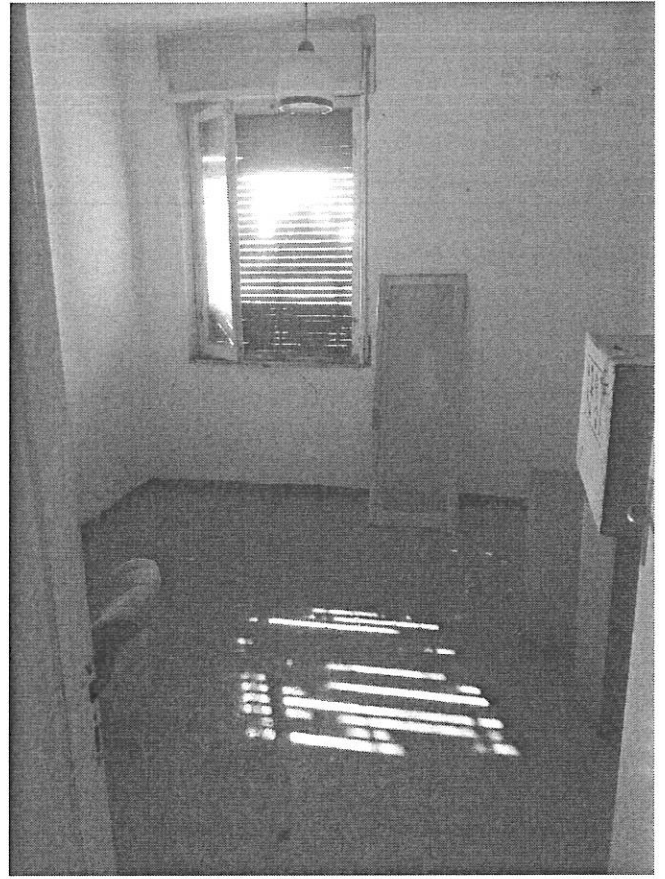
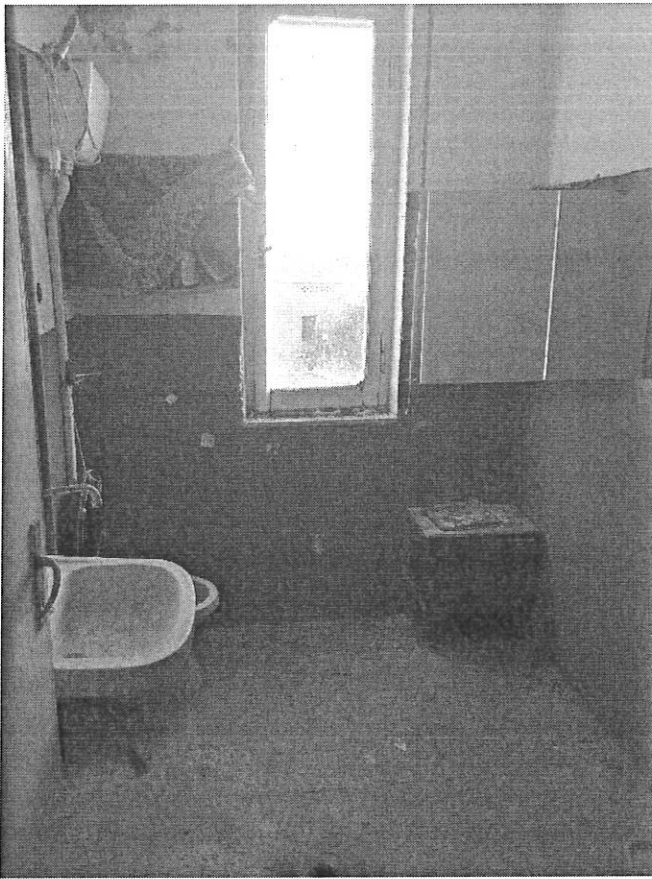


Foto interne unità abitativa