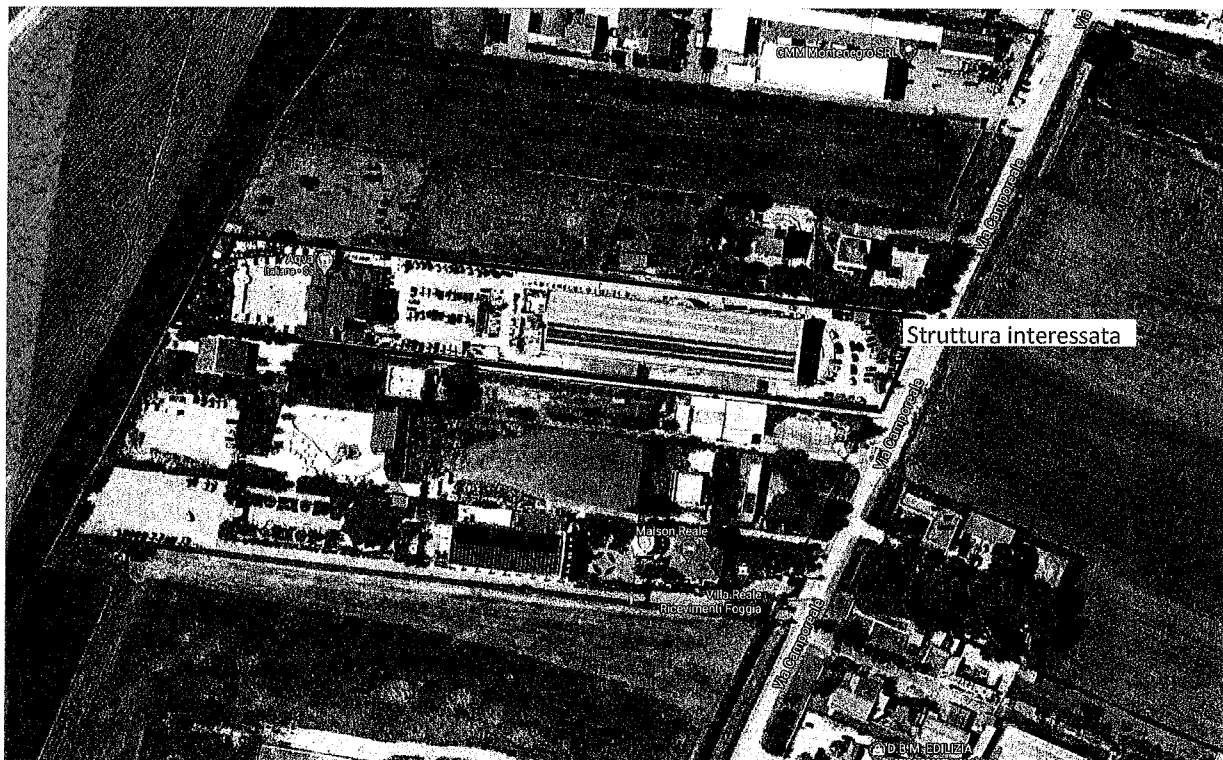


# TRIBUNALE DI FOGGIA

## SEZ. ESECUZIONI IMMOBILIARI

### Rapporto di Valutazione Immobiliare R.G.ES. 486/2017



committente:

Tribunale di Foggia – Sez. Esecuzioni immobiliari – G.E. dott. Claudio CARUSO

tecnico:

geom. Cornelia Mazzamurro

firma:

commessa:

Tavola/ Elaborato:

Documentazione fotografica

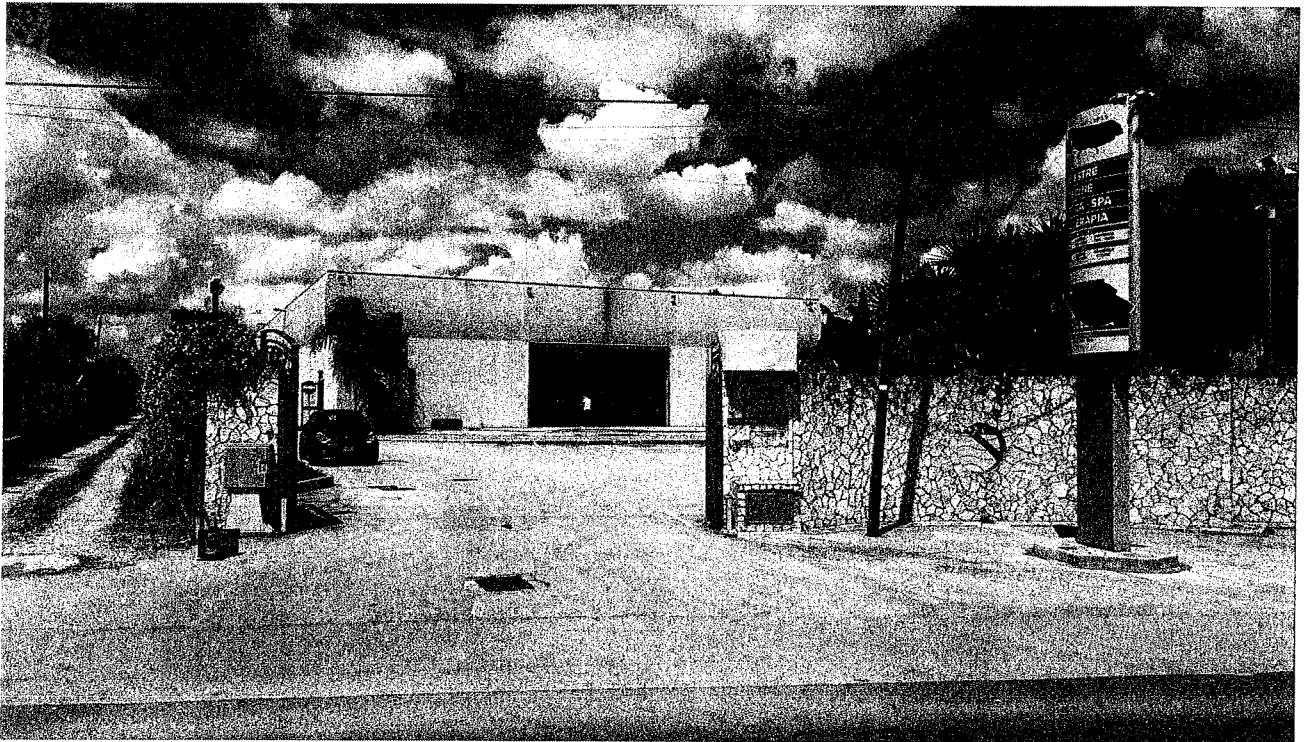
codice tav:

R

Rev:	Scala:	data	descrizione	disegnatore
00	---	30/09/2020	emissione	---

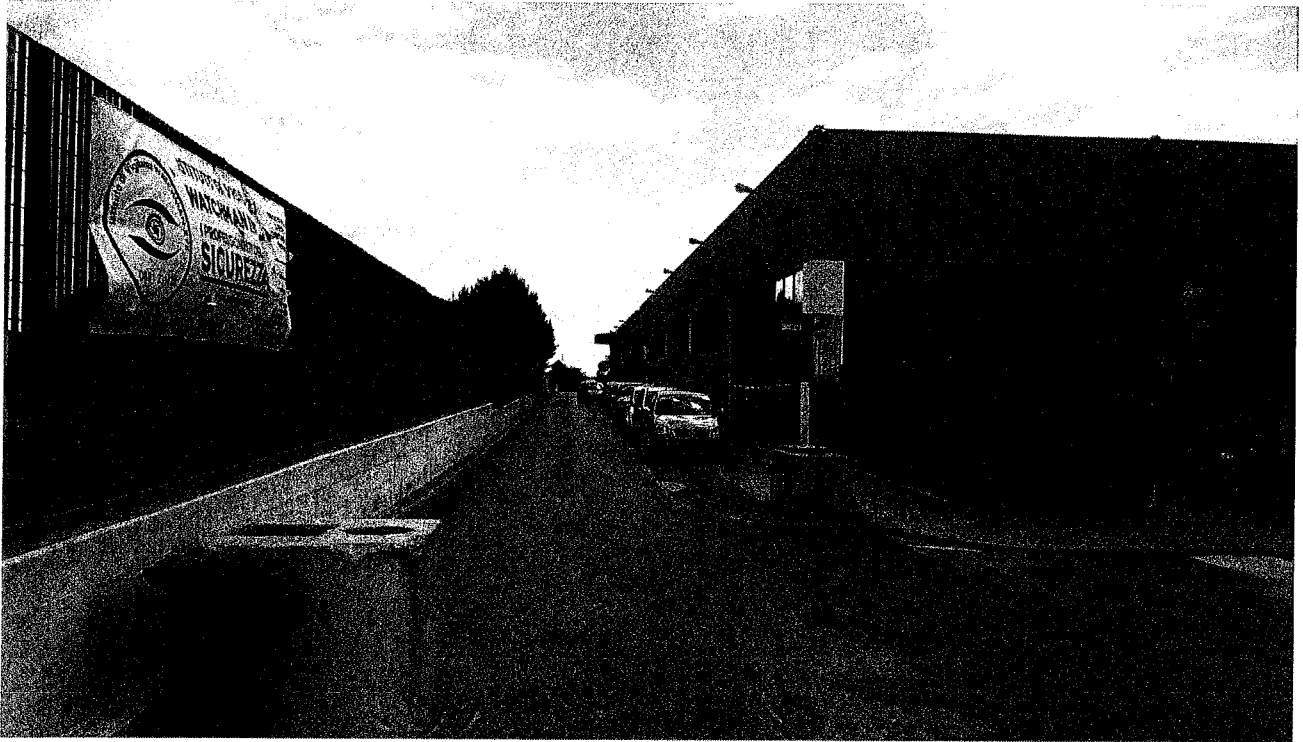






Vista lato Est





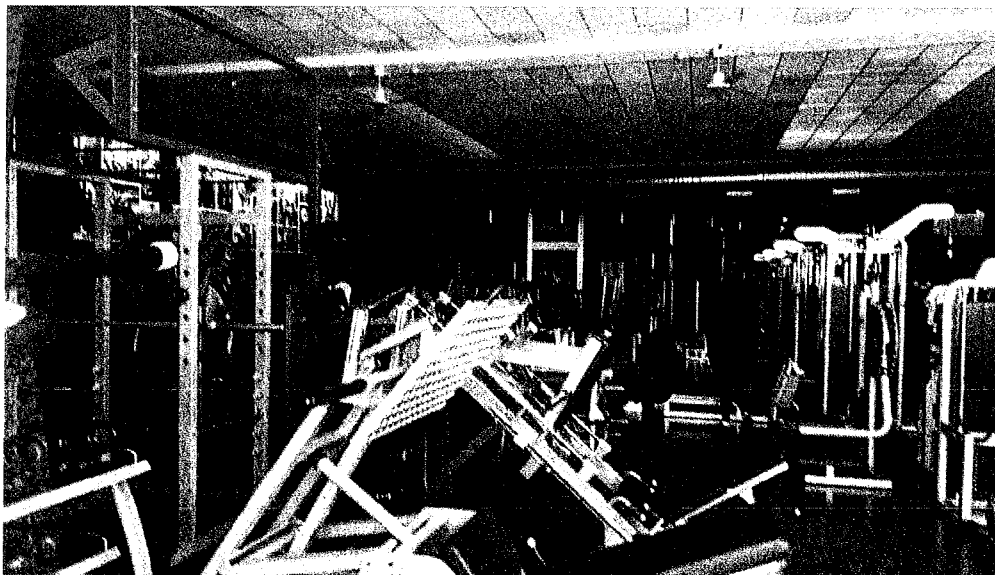
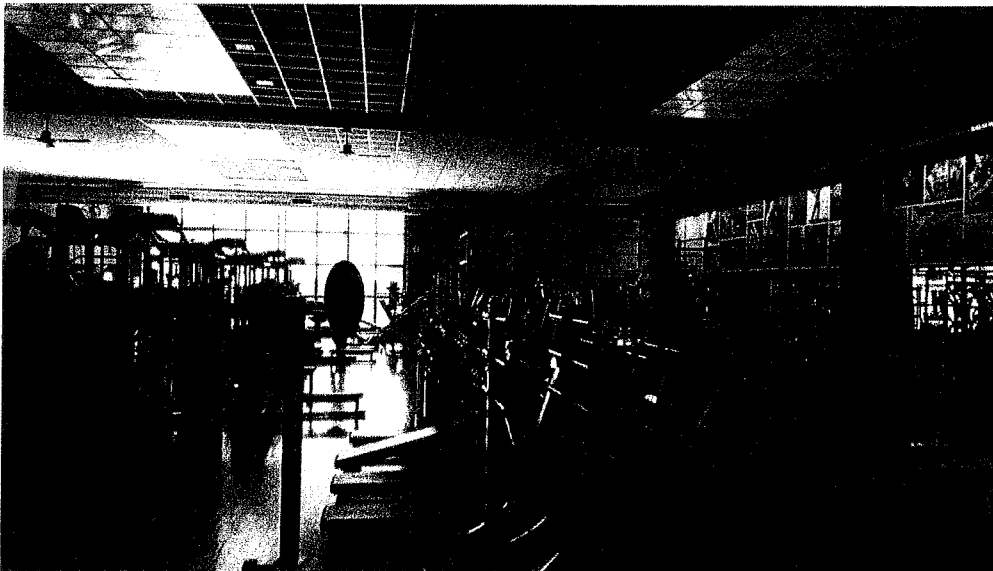
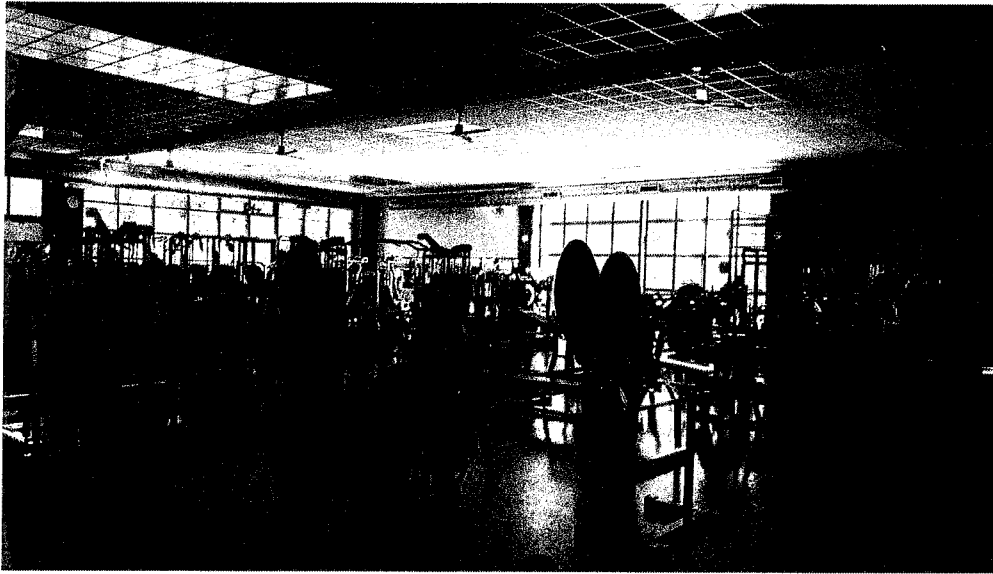
Lato Nord

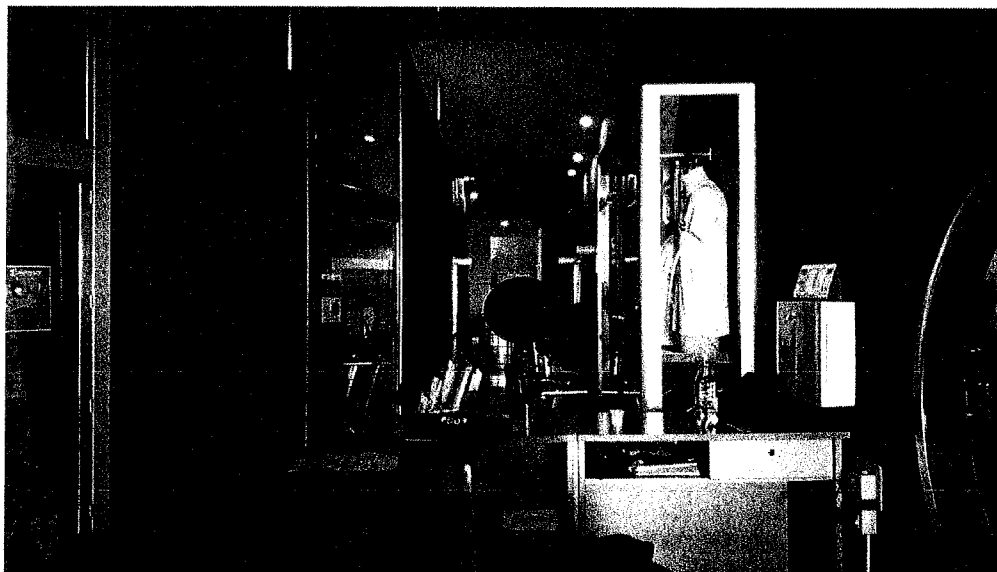


Lato Ovest

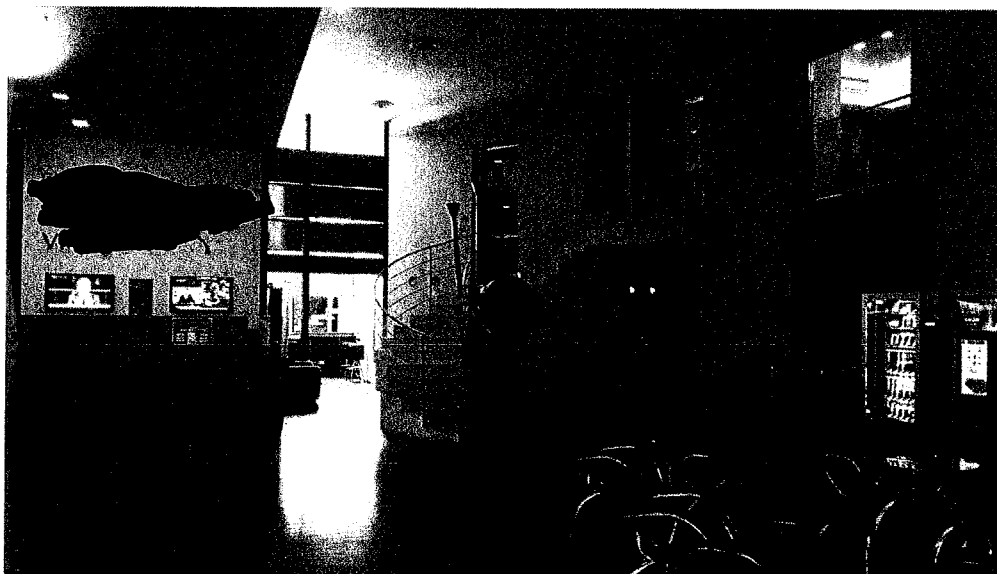
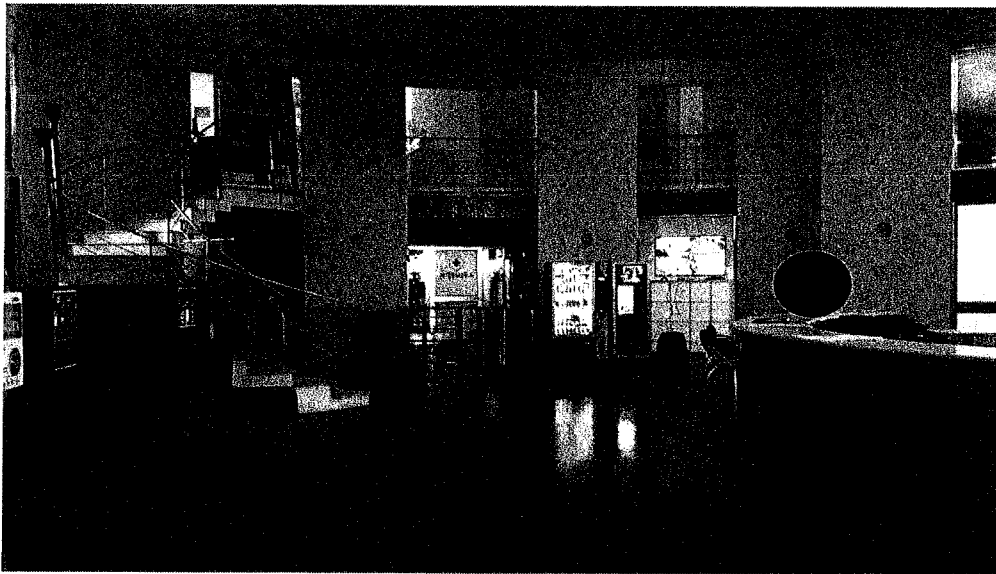


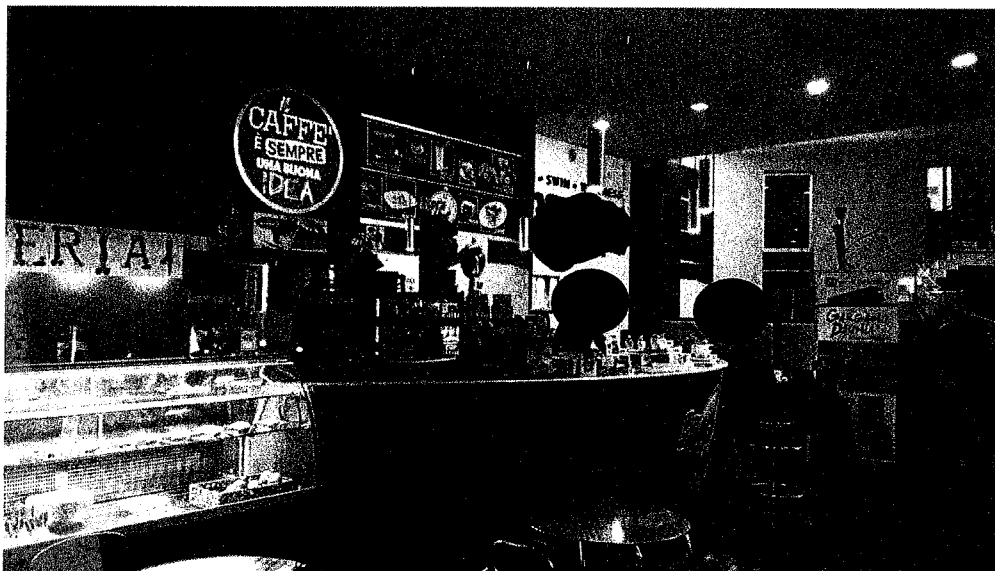
Palestra, blocco si sinistra - piano terra



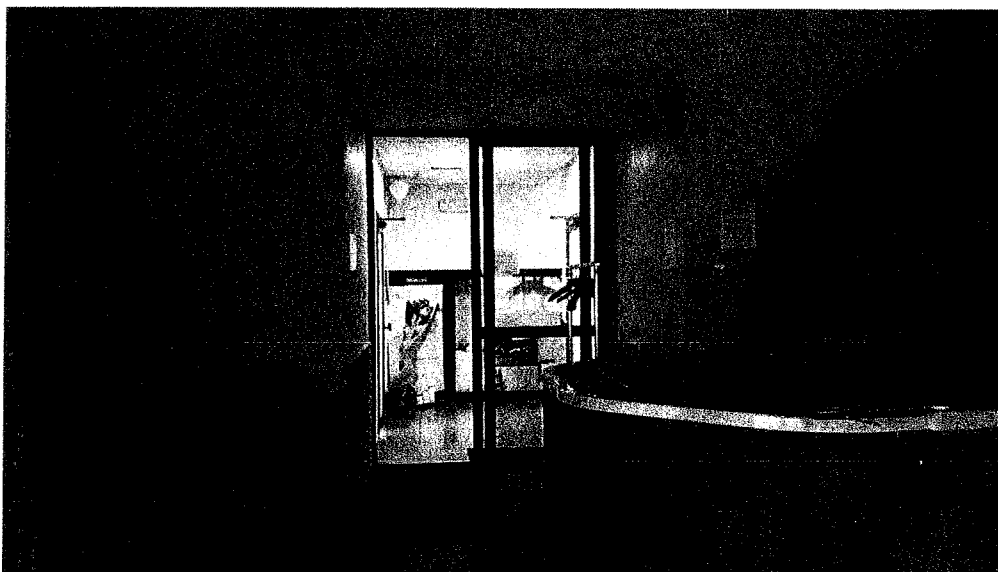
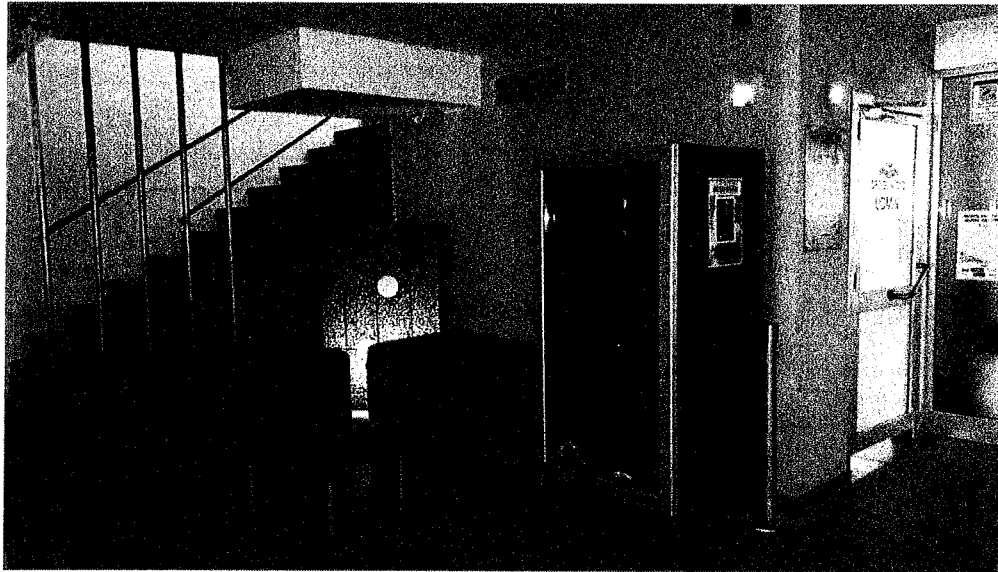


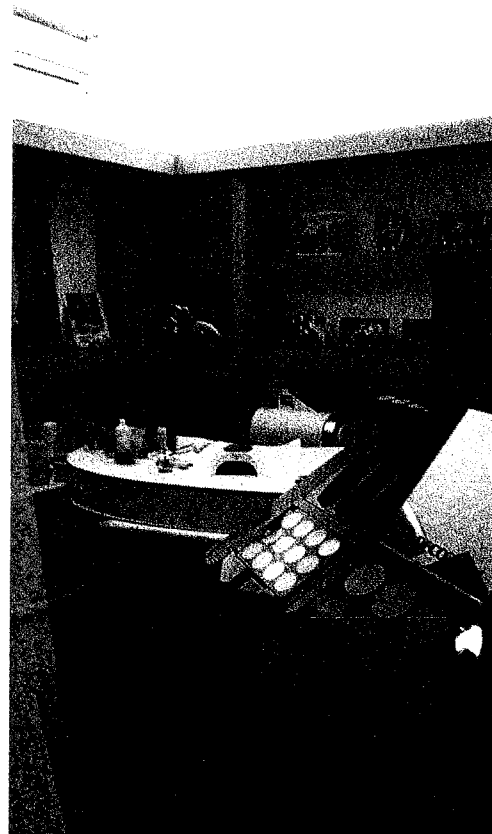
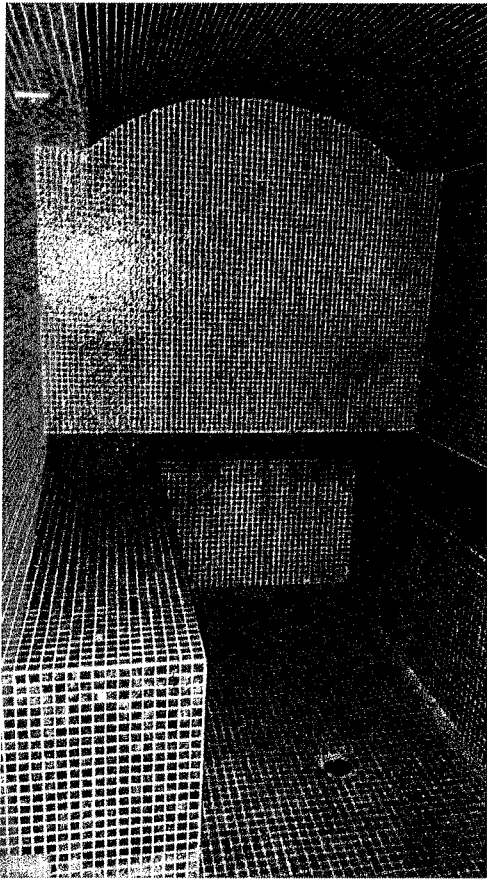
Reception, bar, servizi - Blocco centrale - piano terra



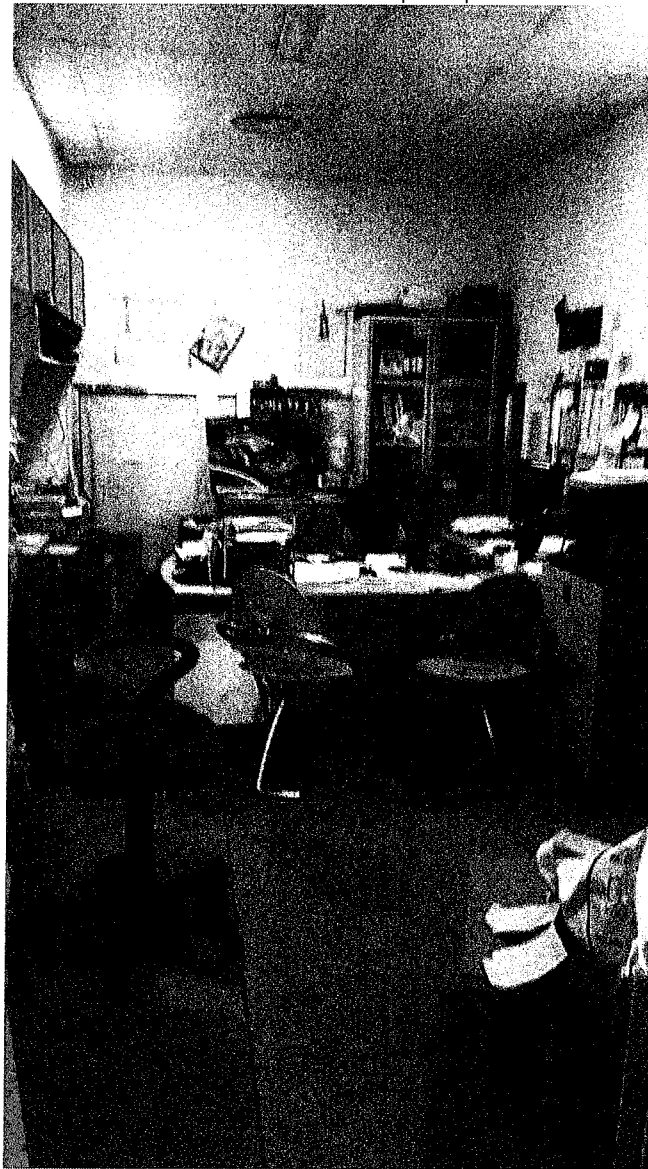


SPA e Centro estetico - Blocco centrale - piano primo

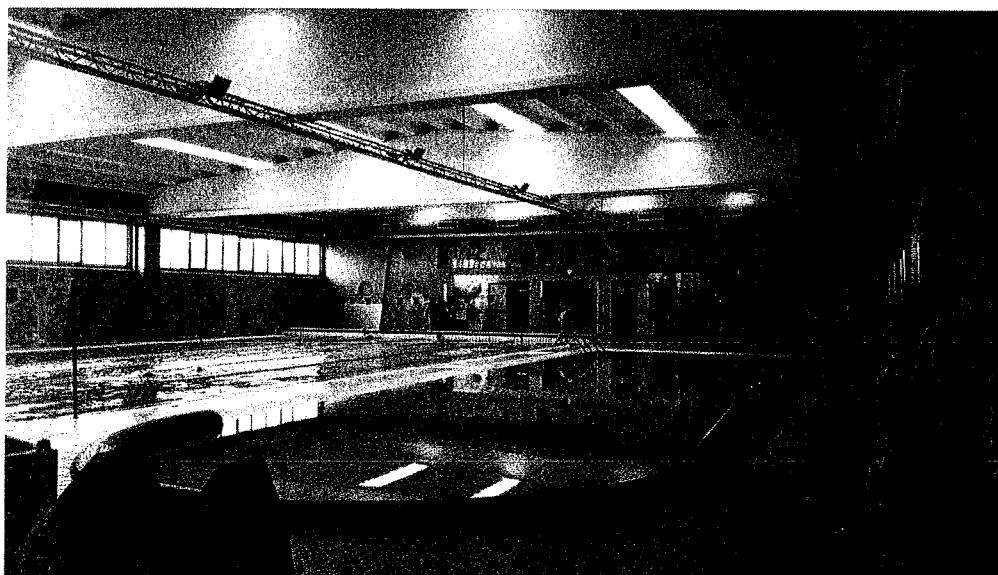
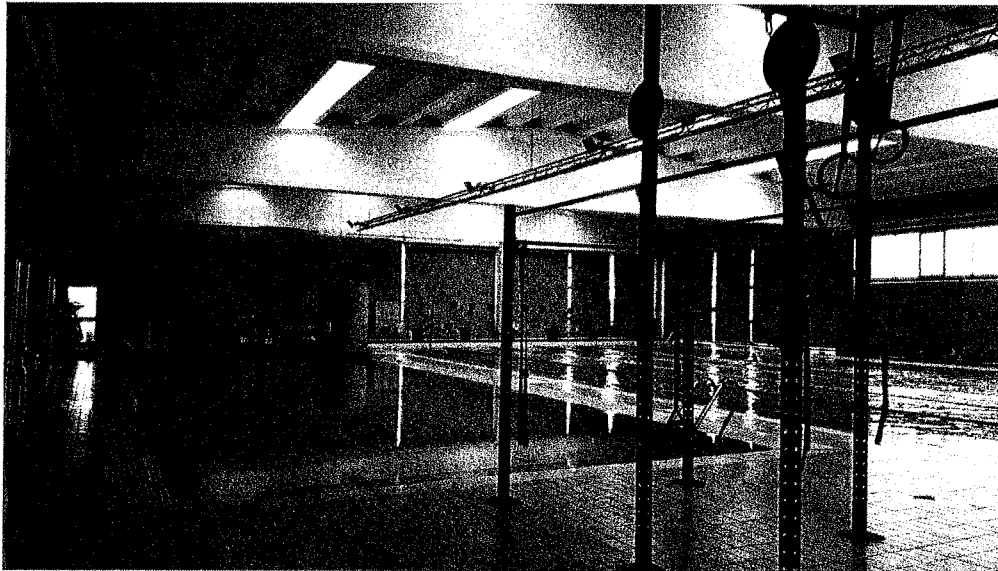
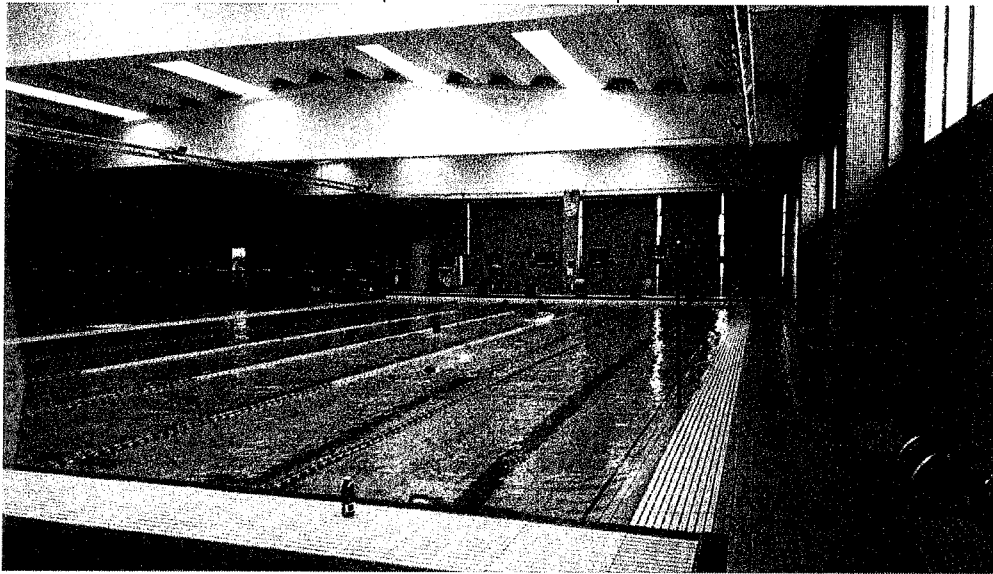




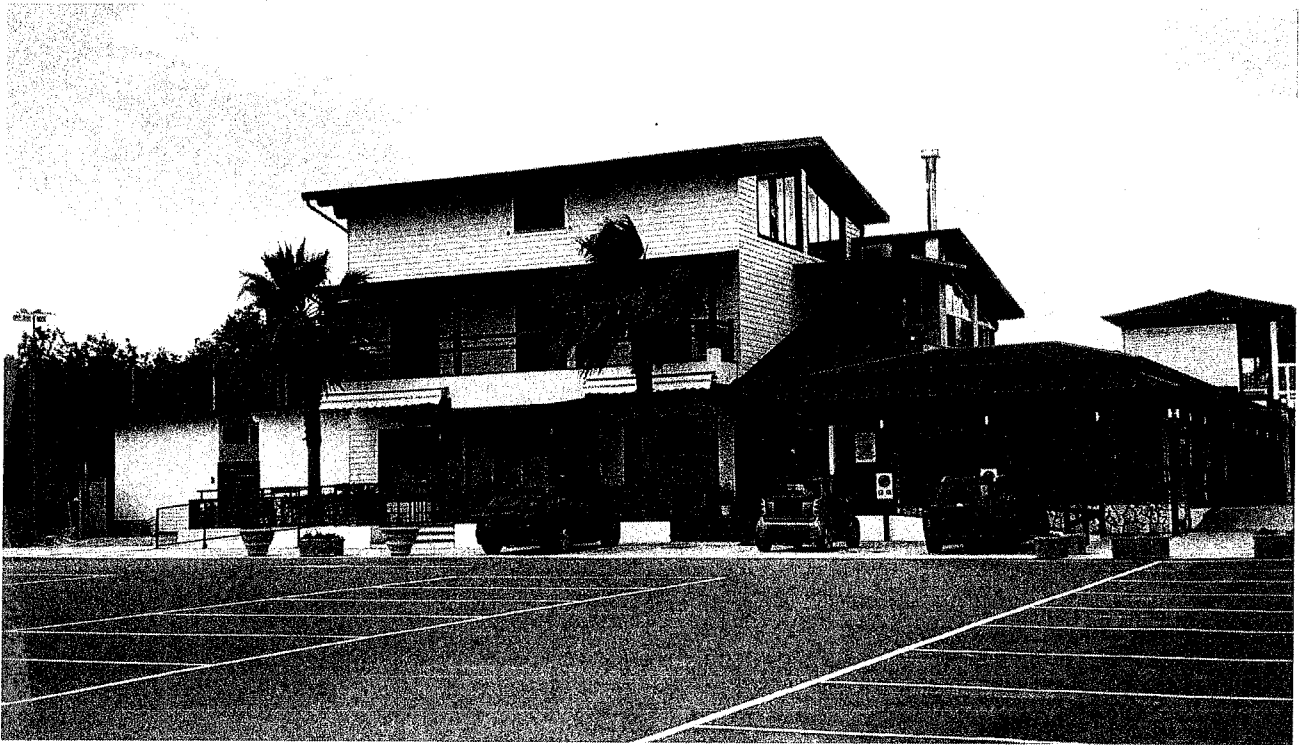
Uffici - Blocco centrale - piano primo



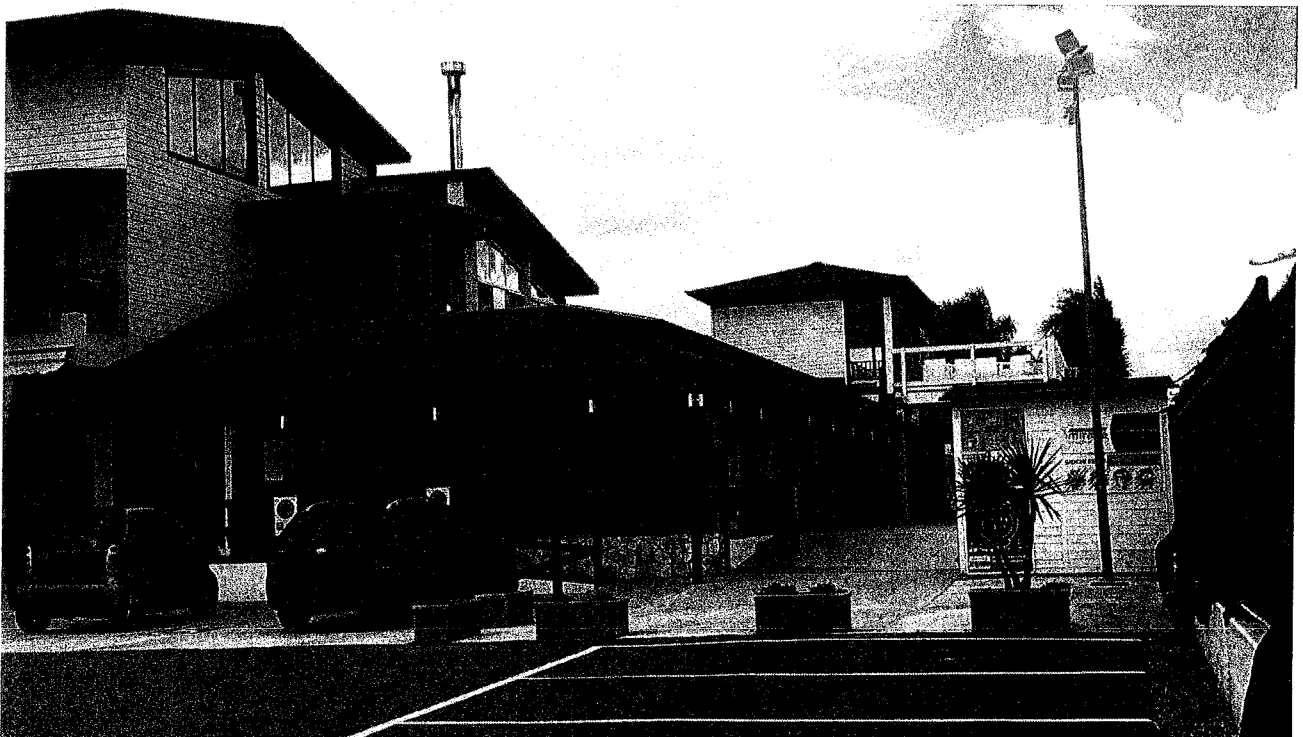
Piscina coperta - Blocco destro - piano terra



### Sala Ristorante e struttura sovrastante



Vista frontale

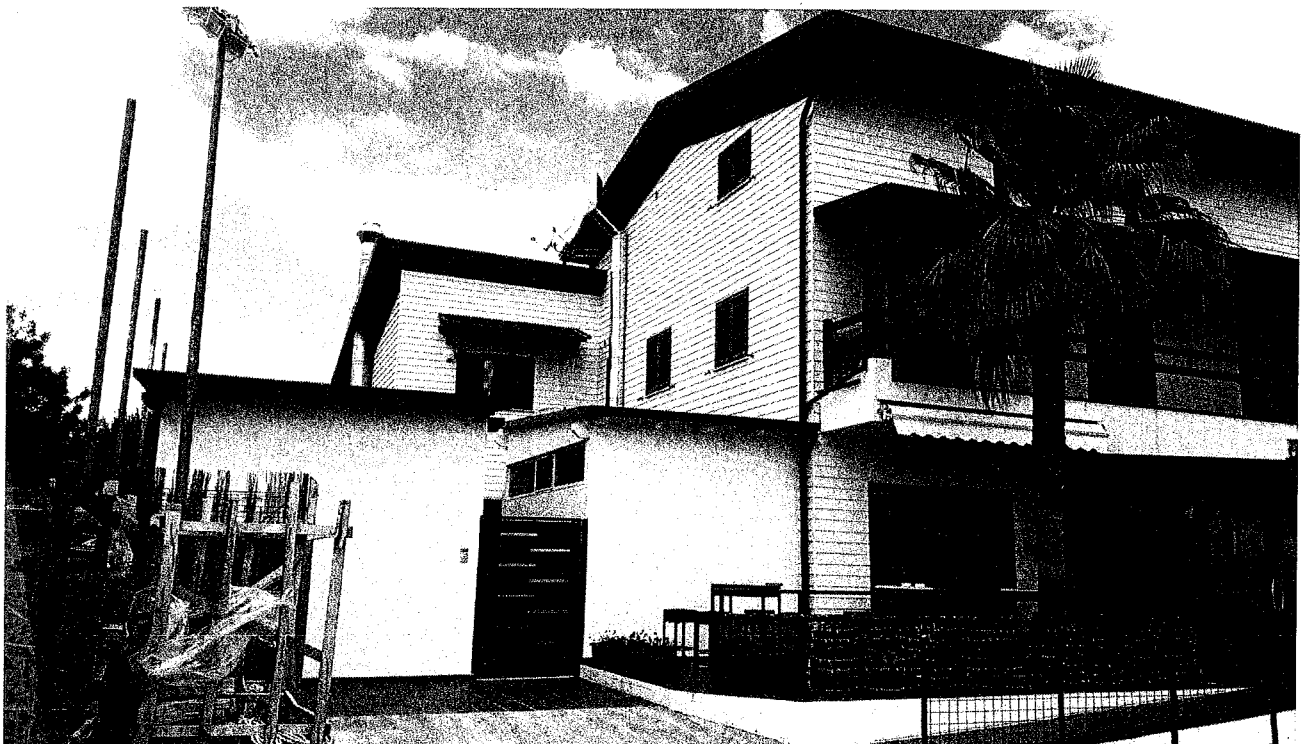


Vista laterale dx



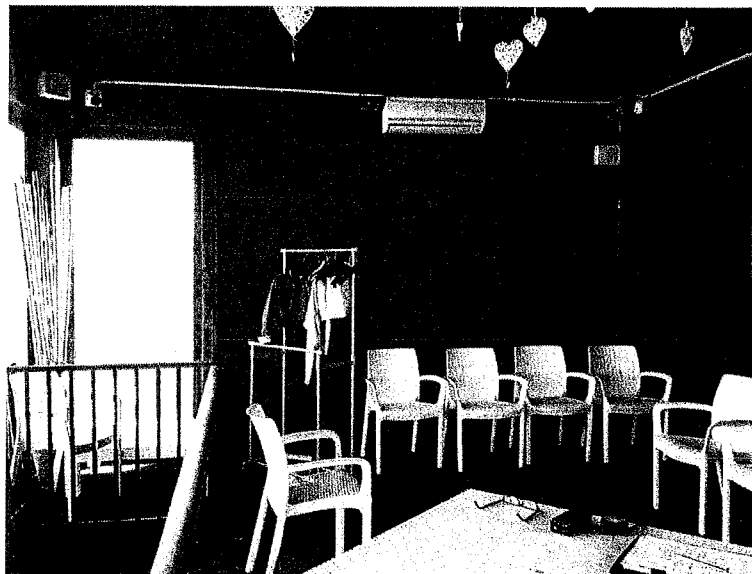
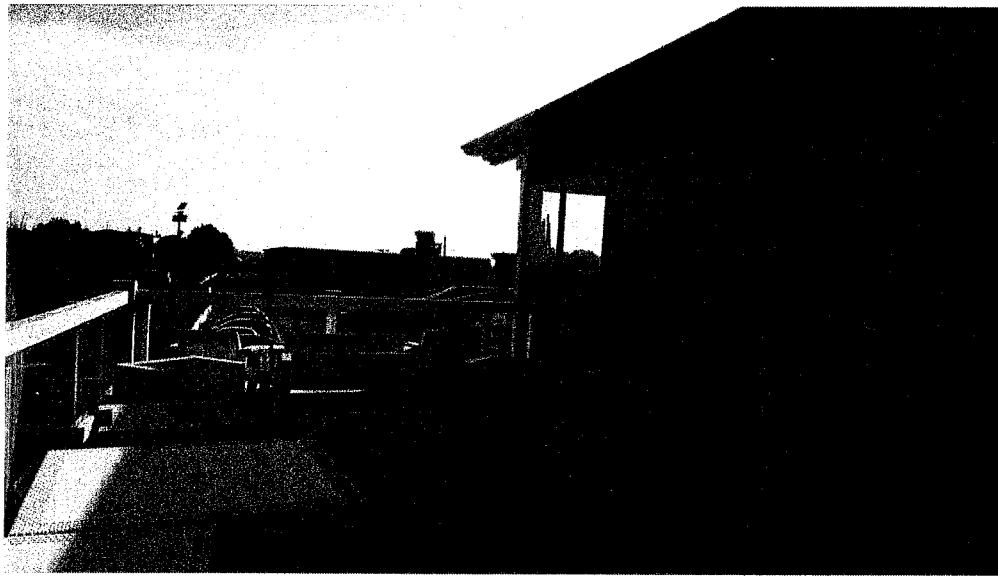


Vista su ingresso piscina esterna

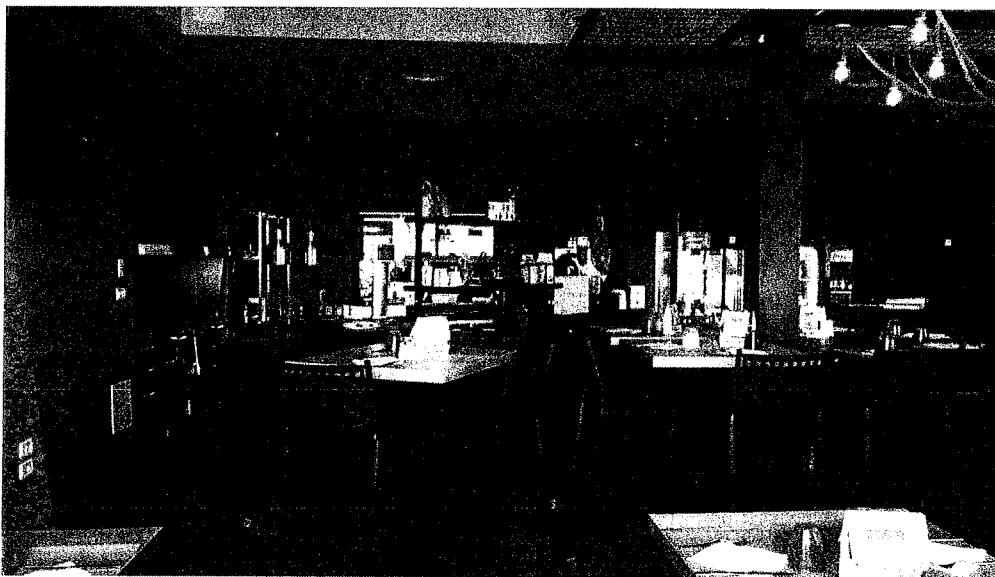
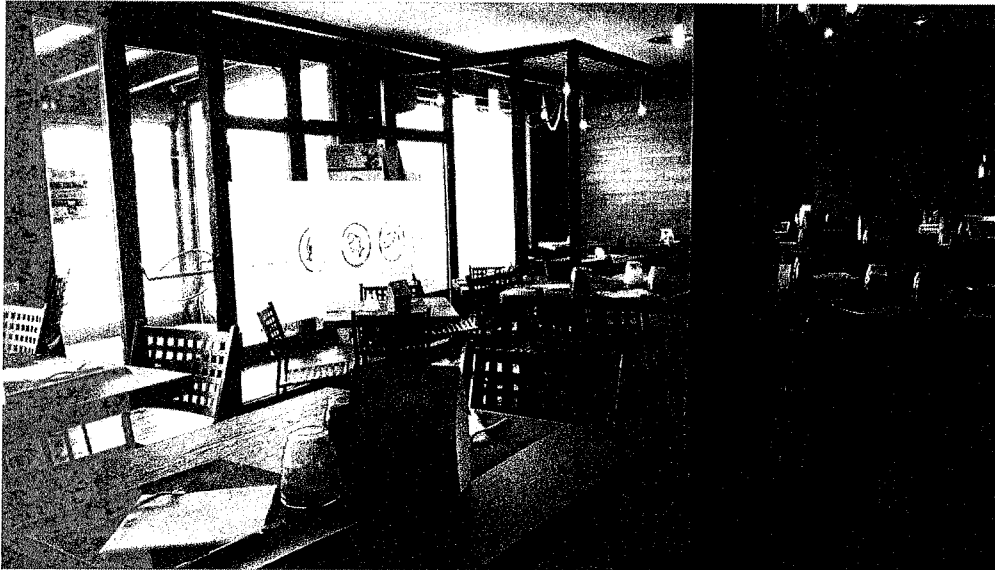


Vista laterale sx

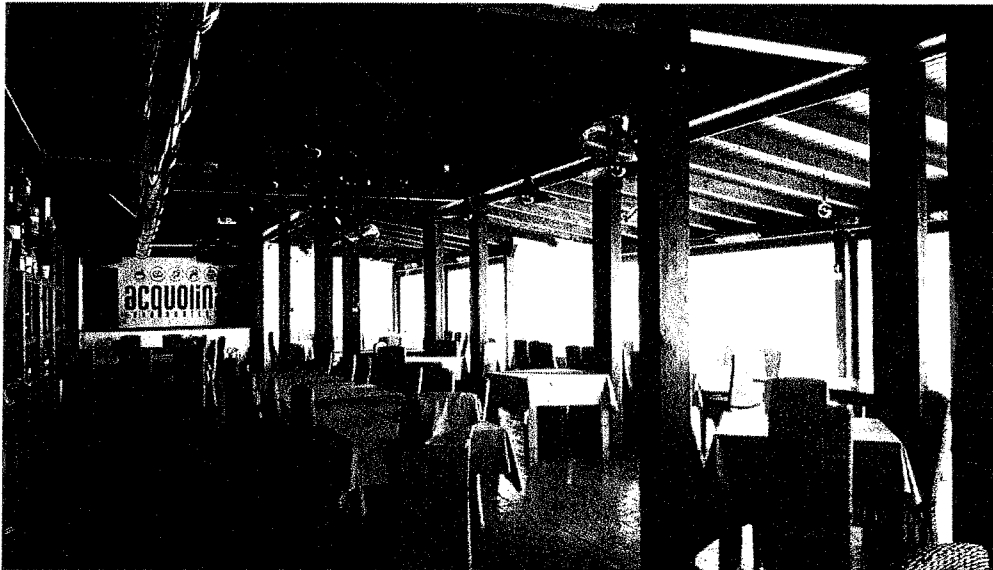




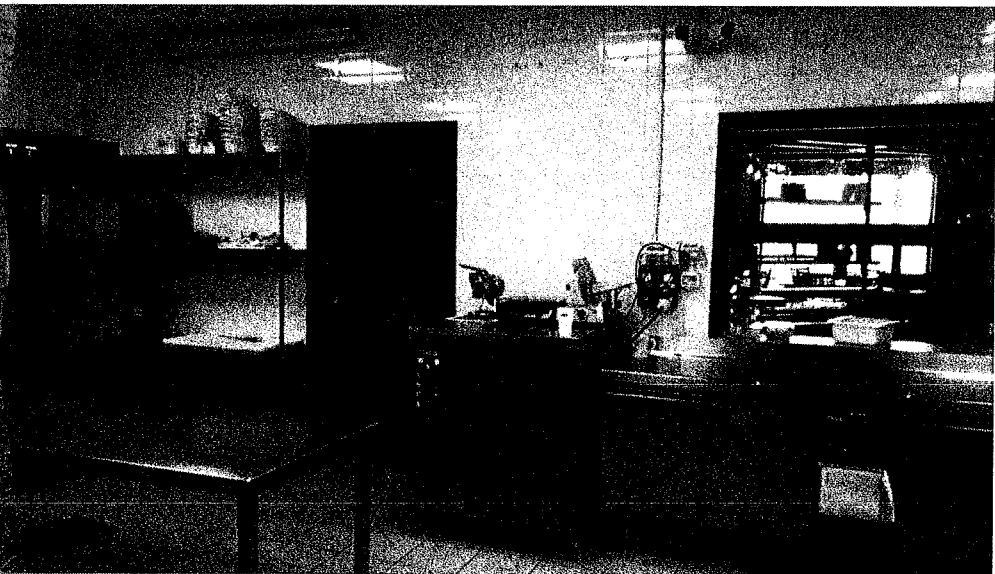
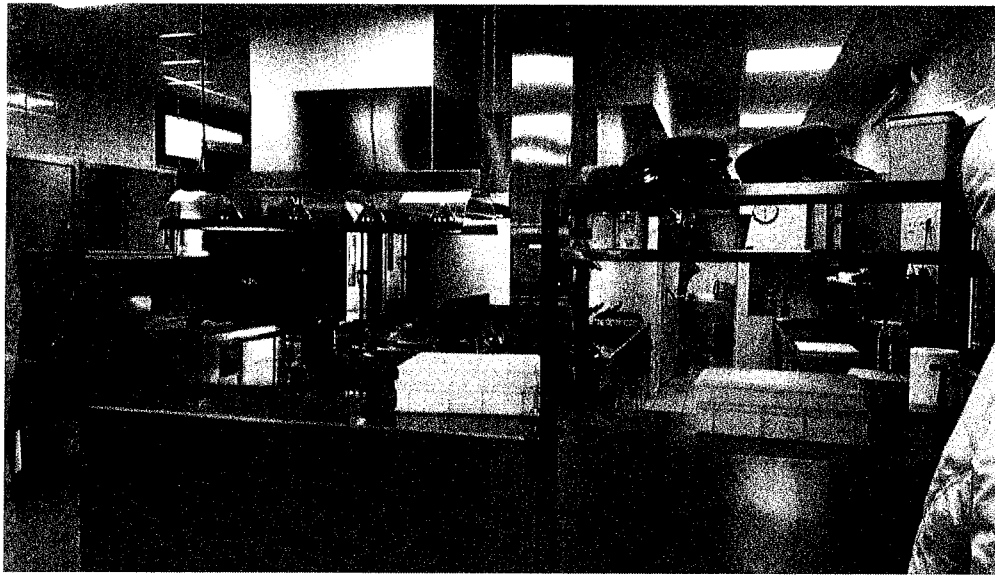
Sala su ingresso - piano terra



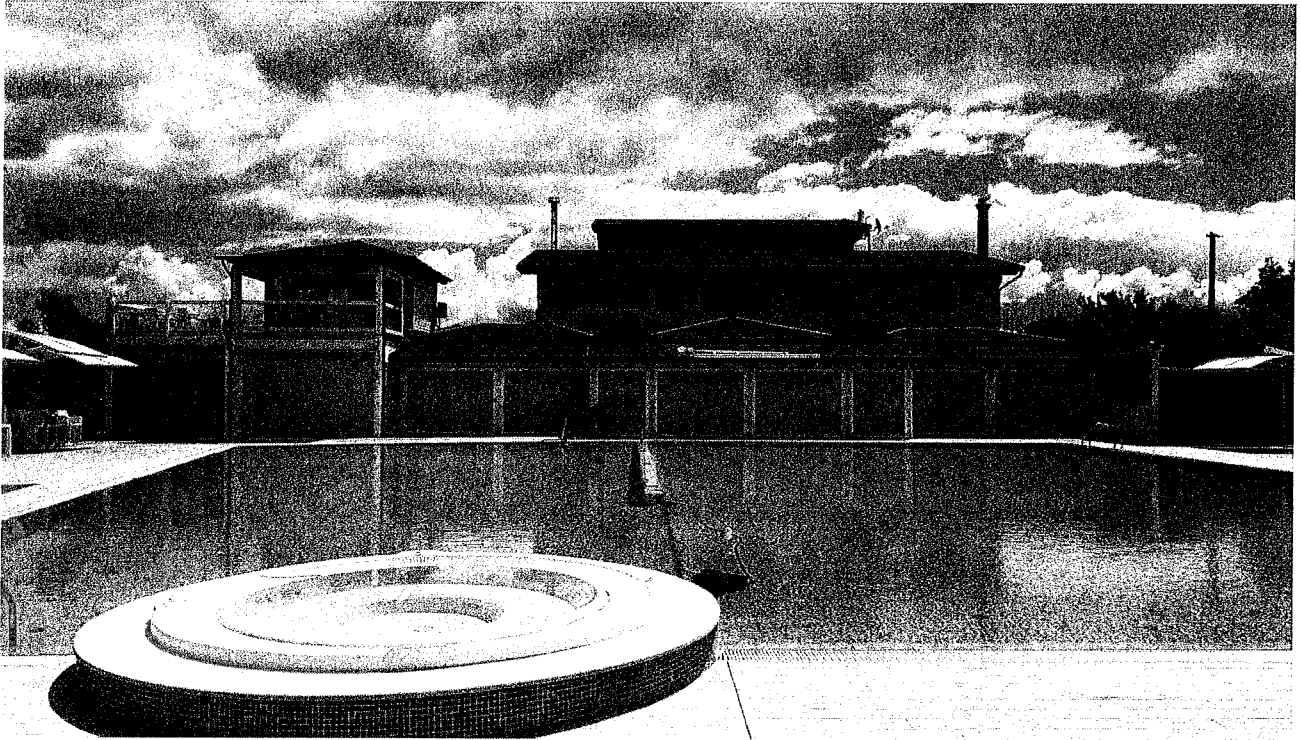
Sala su piscina all'aperto - piano terra



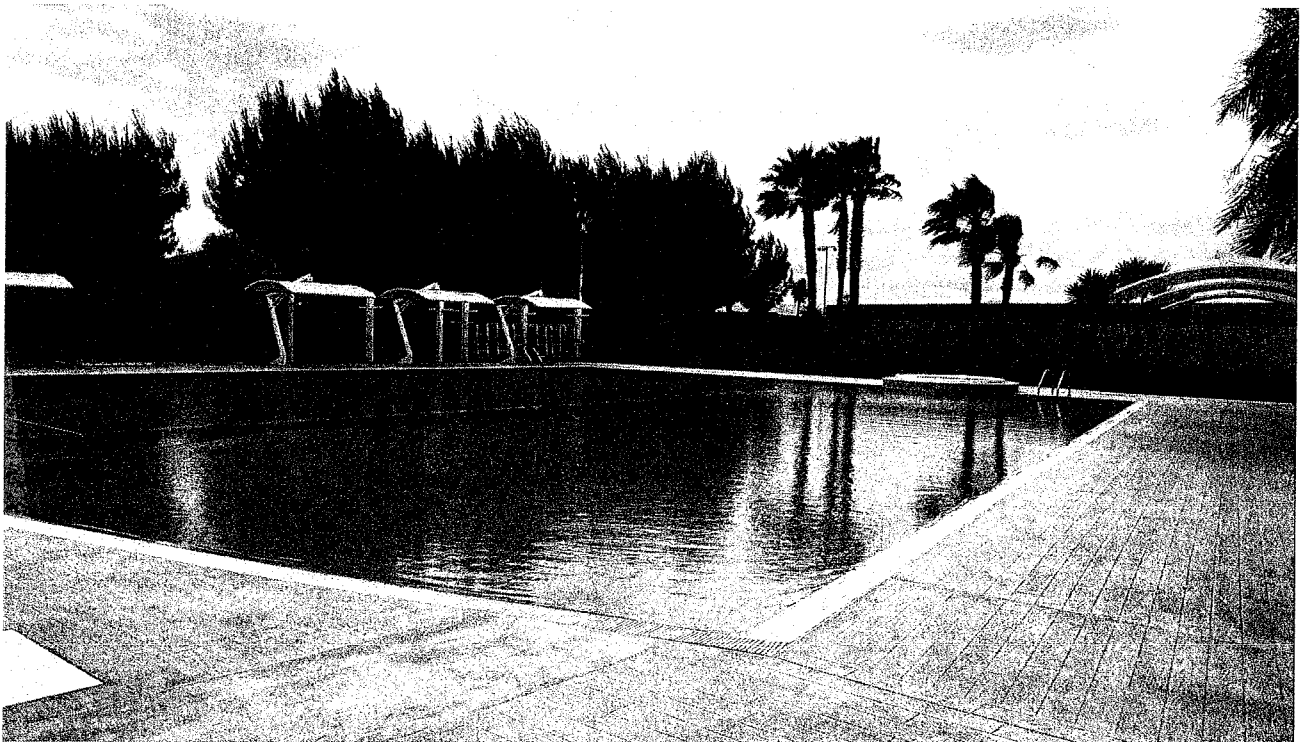
Cucina



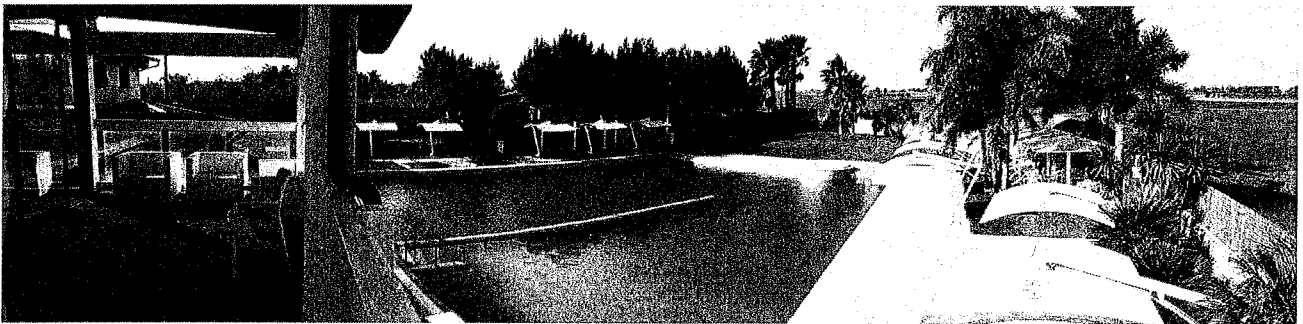
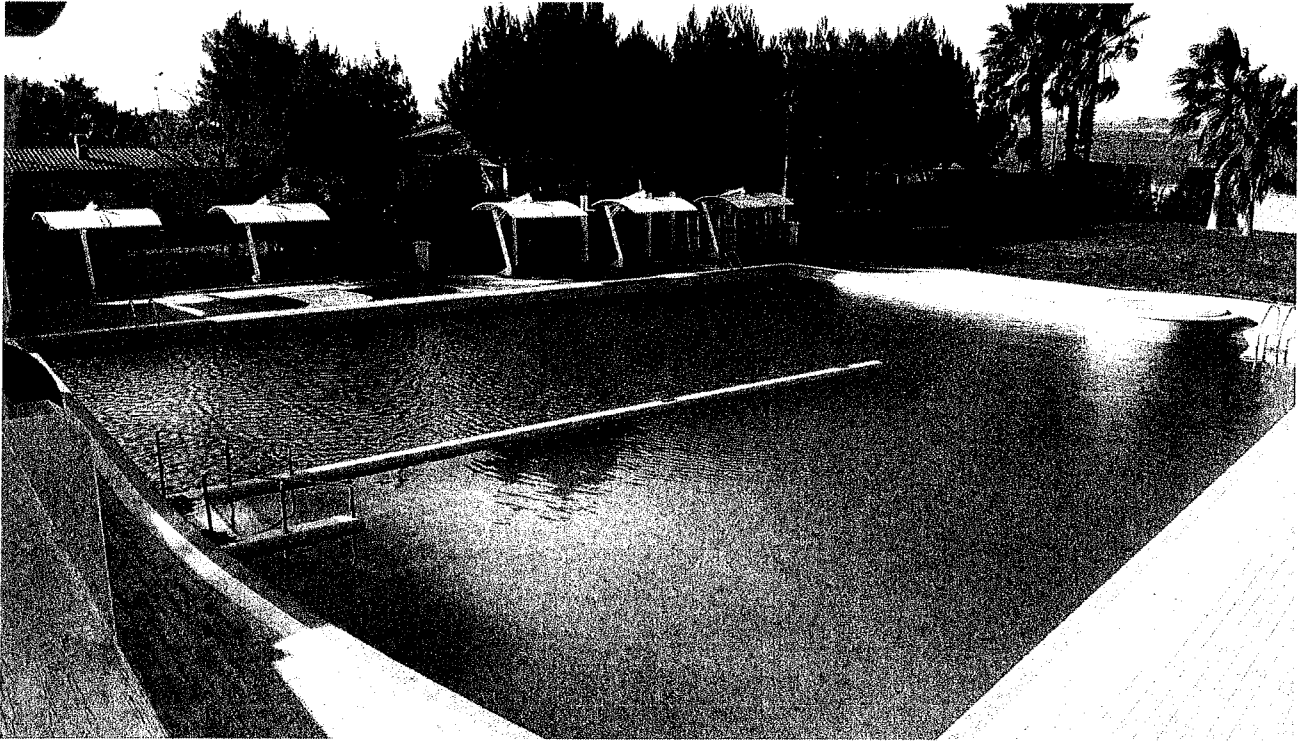
### Piscina esterna

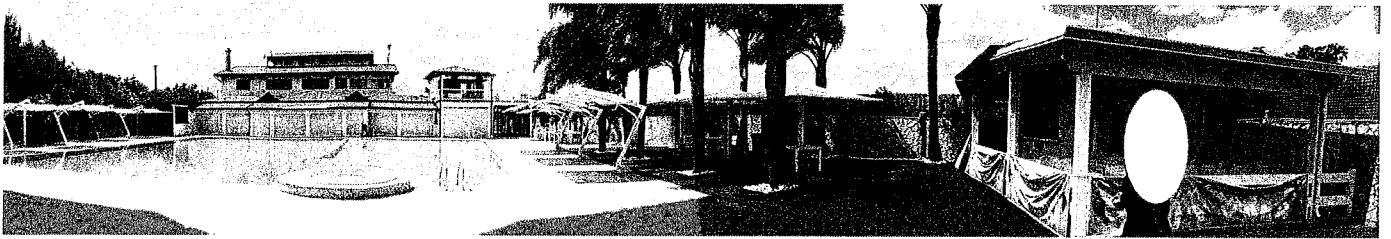


Vista sul retro della Sala ristorante e Piscina esterna



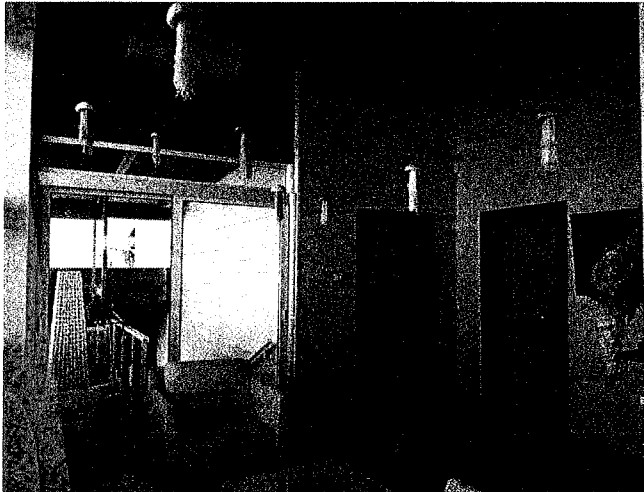
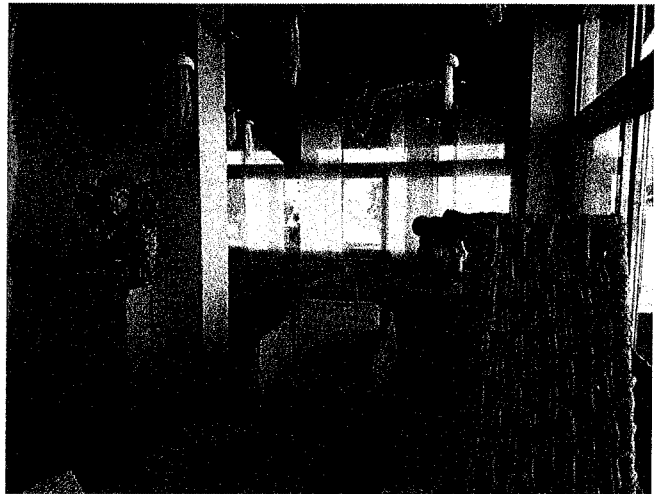






### Abitazione su sala ristorante - 1^ piano

ingresso comune

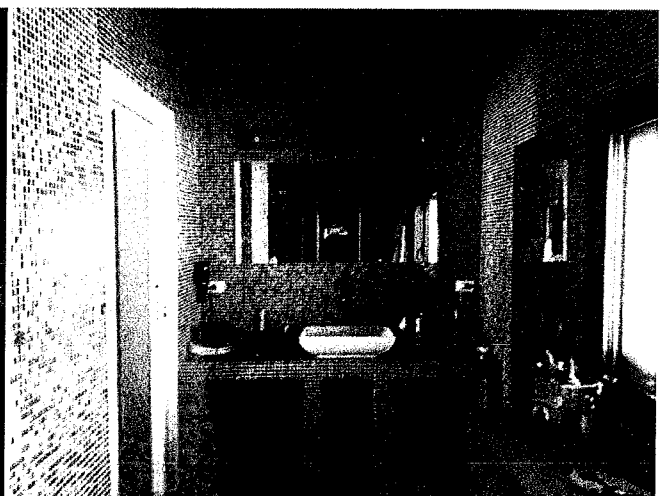
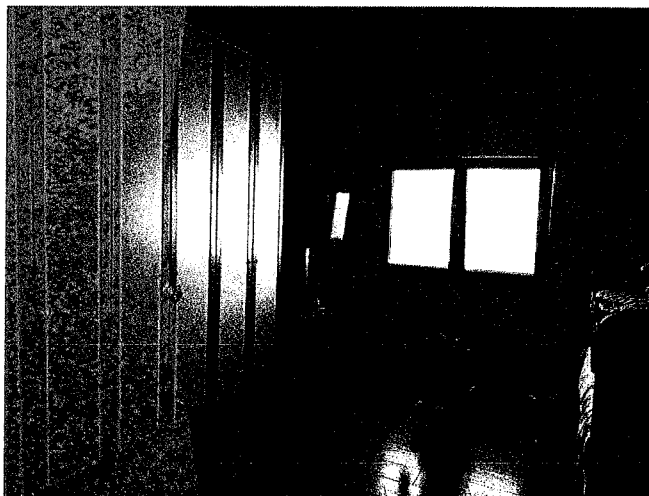
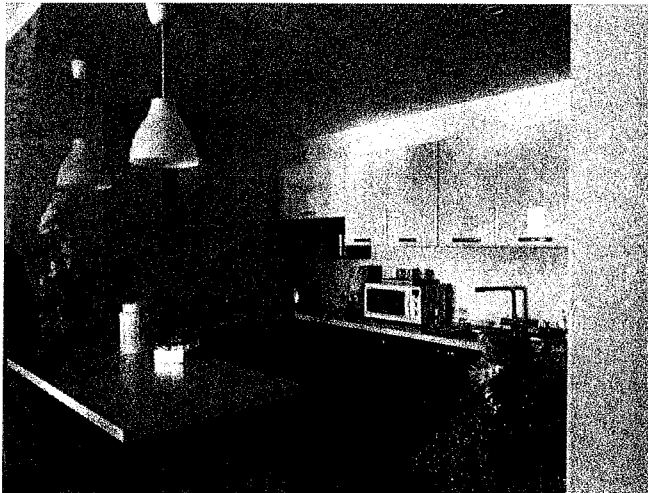
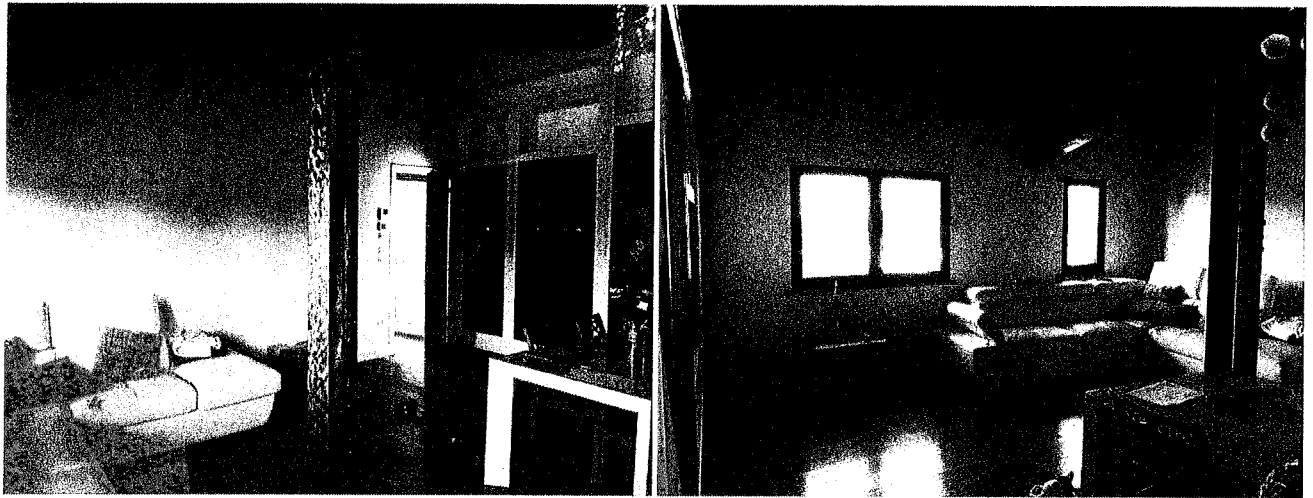


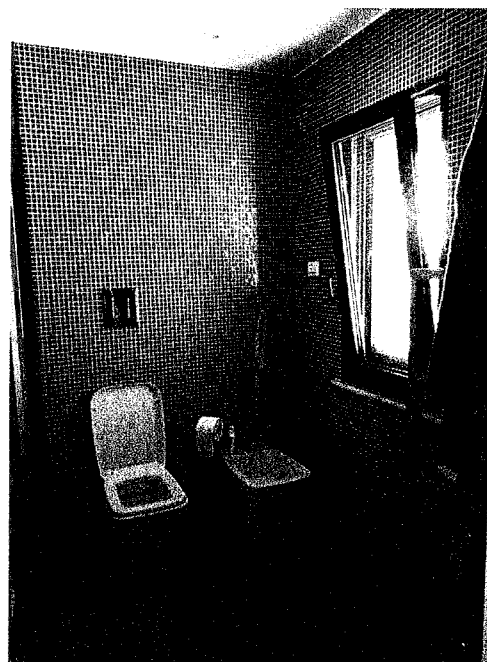
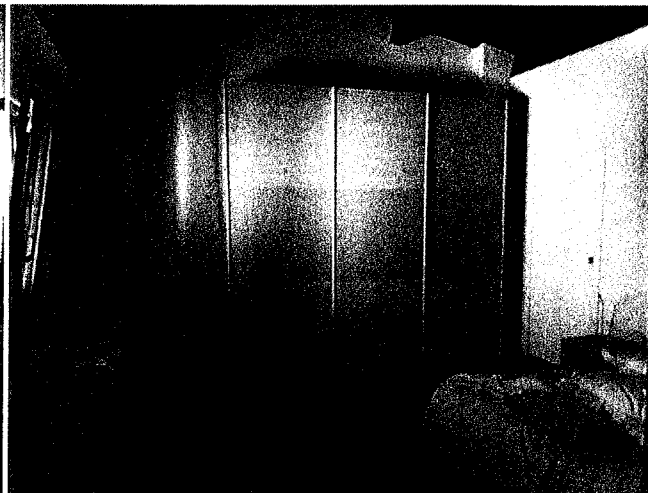
**abitazione  
incompleta**

**abitazione  
ultimata**



Abitazione ultimata





Abitazione incompleta





### Abitazione custode - 1^ piano

