

**Tribunale di Catanzaro**

**PROCEDURA CONCORSUALE**

Liquidazione Giudiziale N° 20/2024

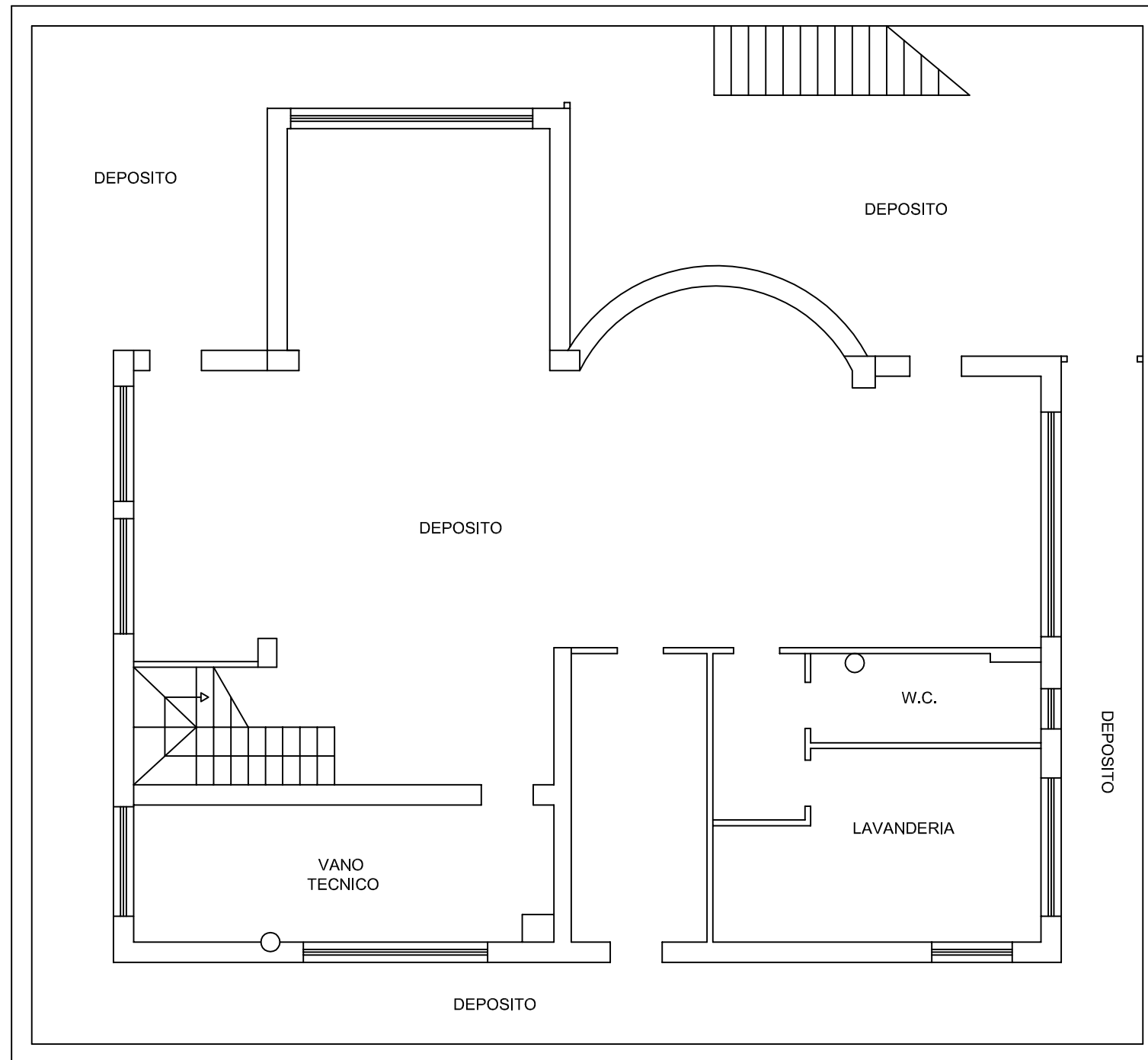
Ditta : [REDACTED]

*PLANIMETRIE*

---

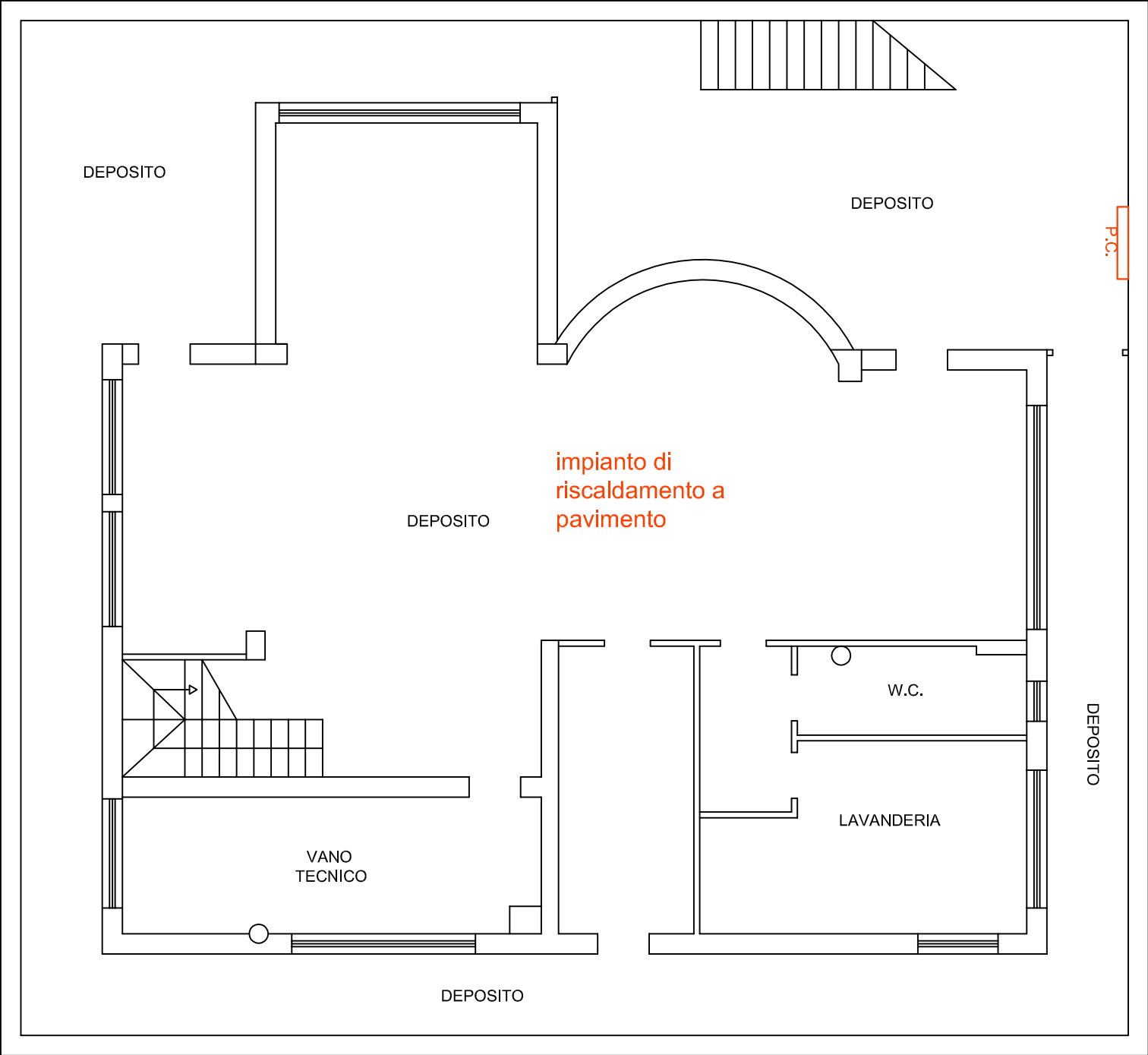
[REDACTED]

Pianta Piano seminterrato  
H= 2.90 m

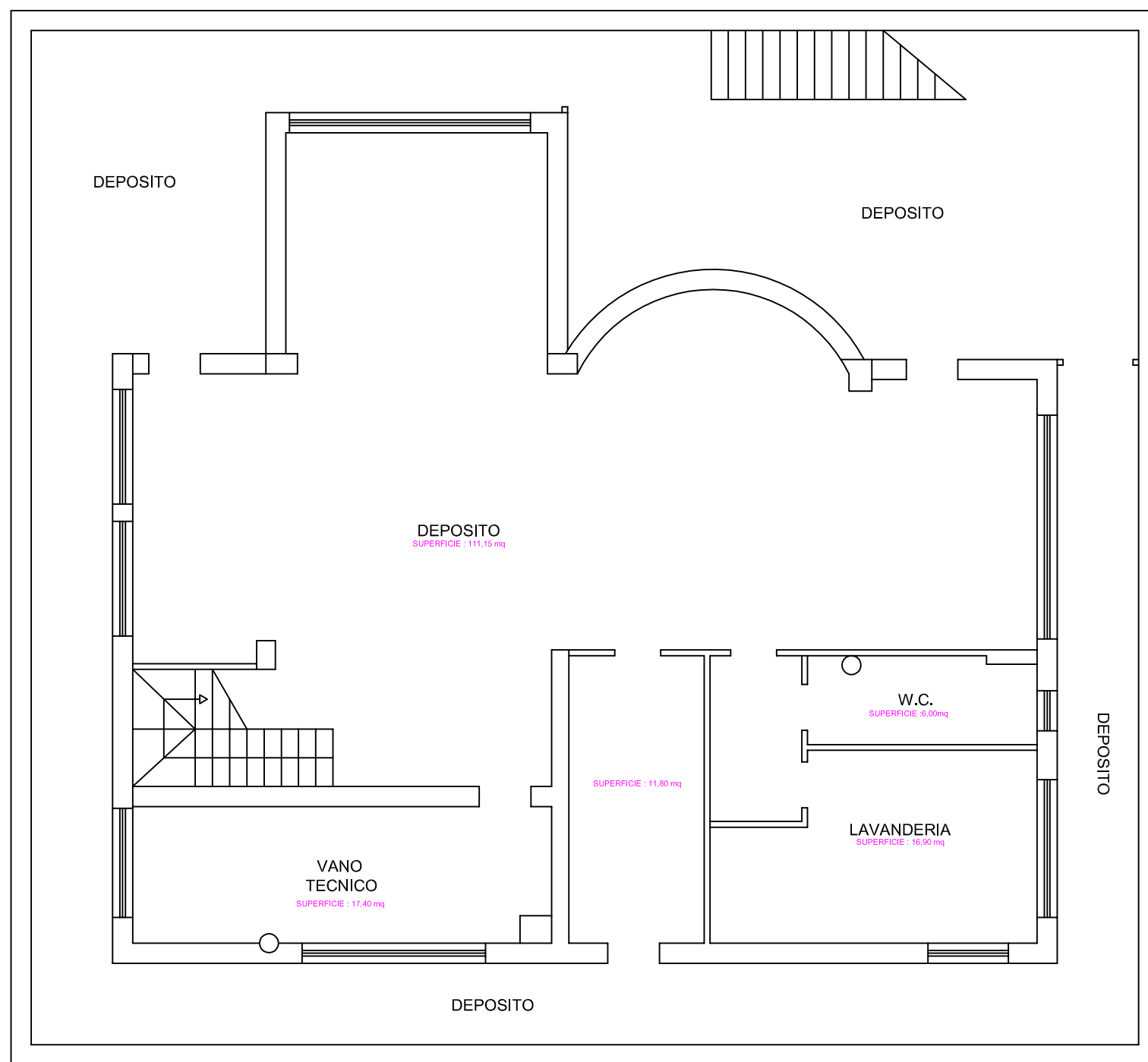




Pianta Piano seminterrato con impianti  
H= 2.90 m

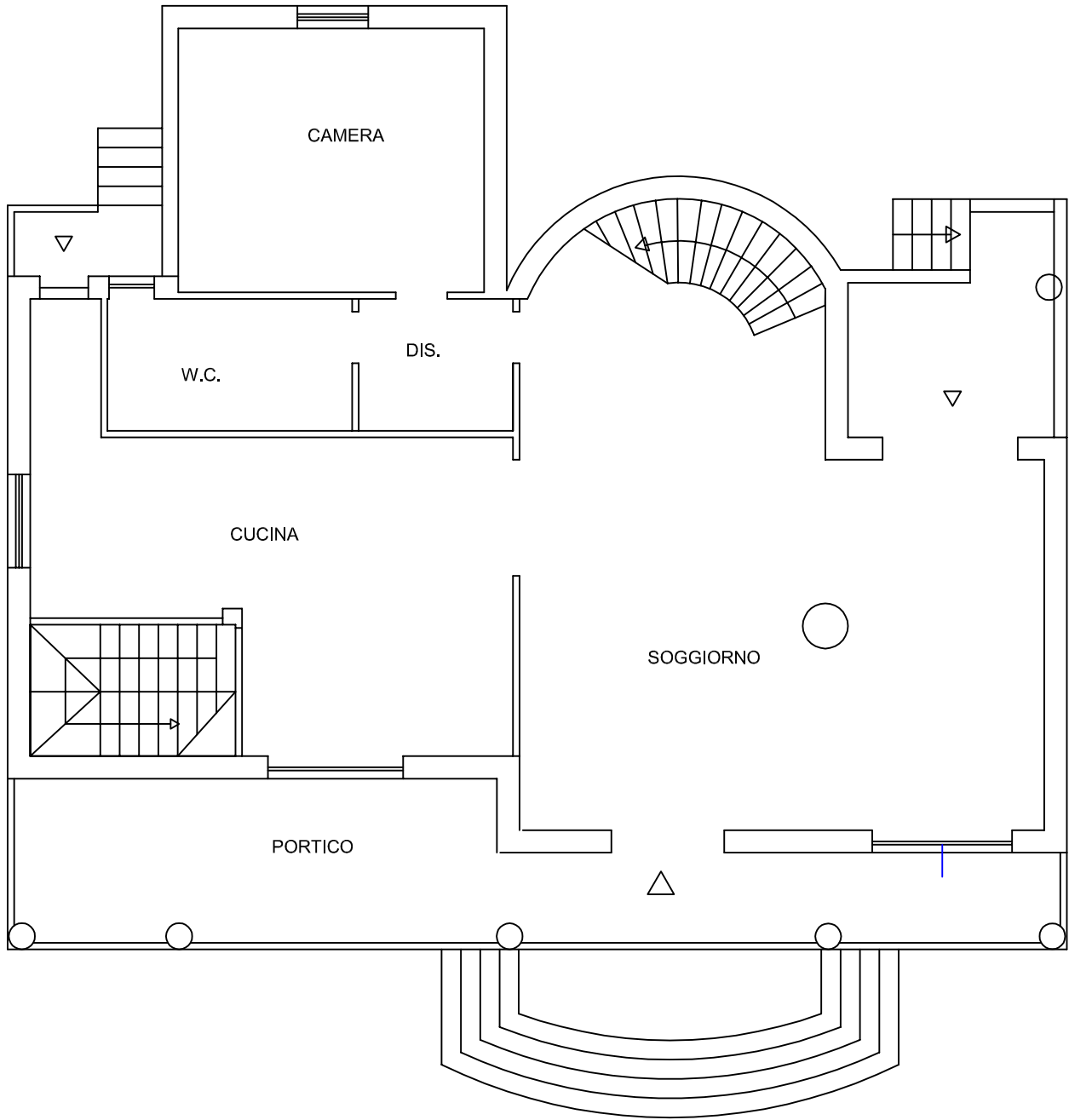


Pianta Piano seminterrato  
H= 2.90 m

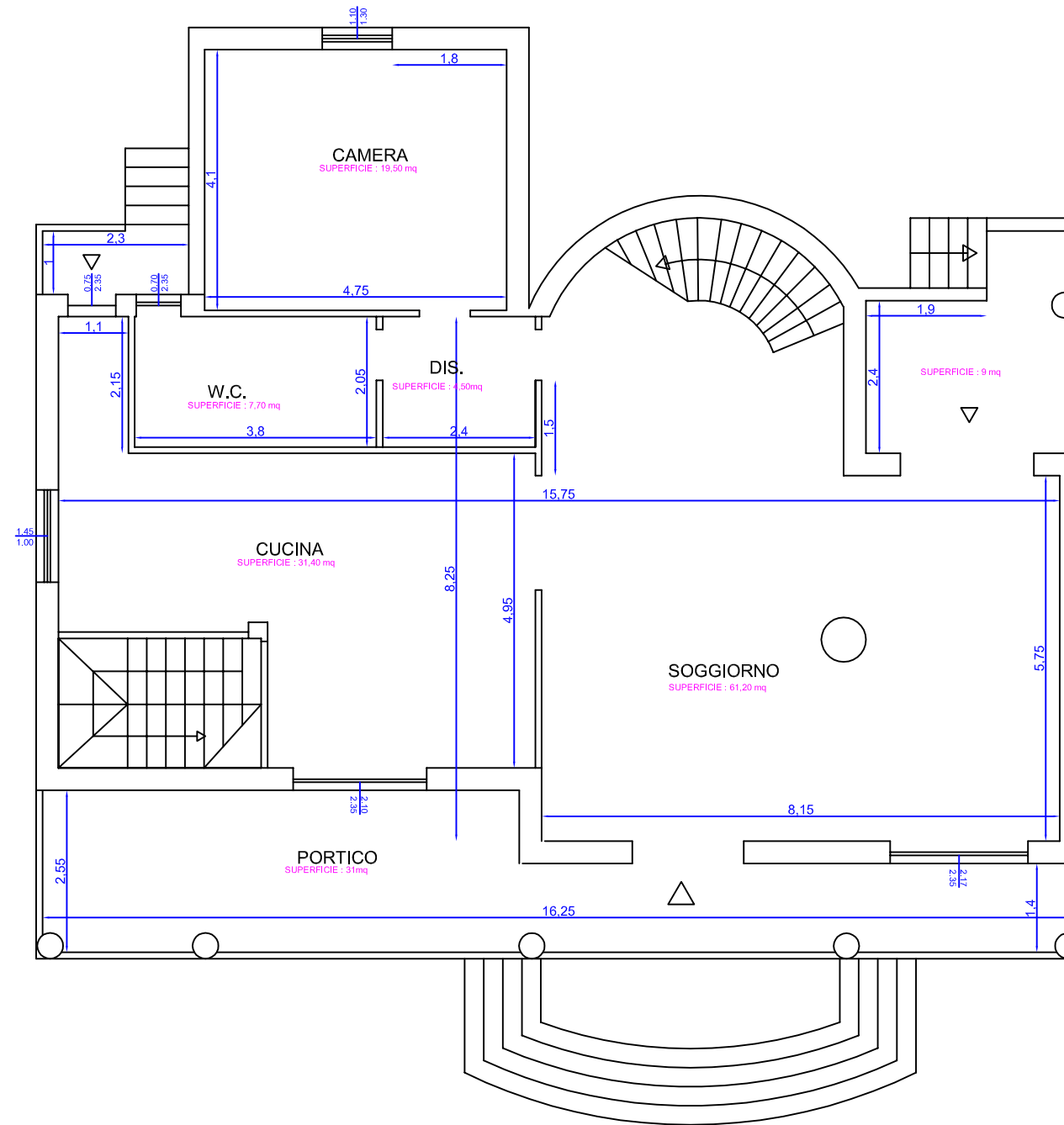


SUPERFICIE LORDA COMPRESO INTERCAPEDINE PIANO SEMINTERRATO: 367.50 mq  
SUPERFICIE LORDA ABITAZIONE PIANO SEMINTERRATO: 201.50 mq  
SUPERFICIE UTILE PIANTA PIANO SEMINTERRATO: 297.83 mq

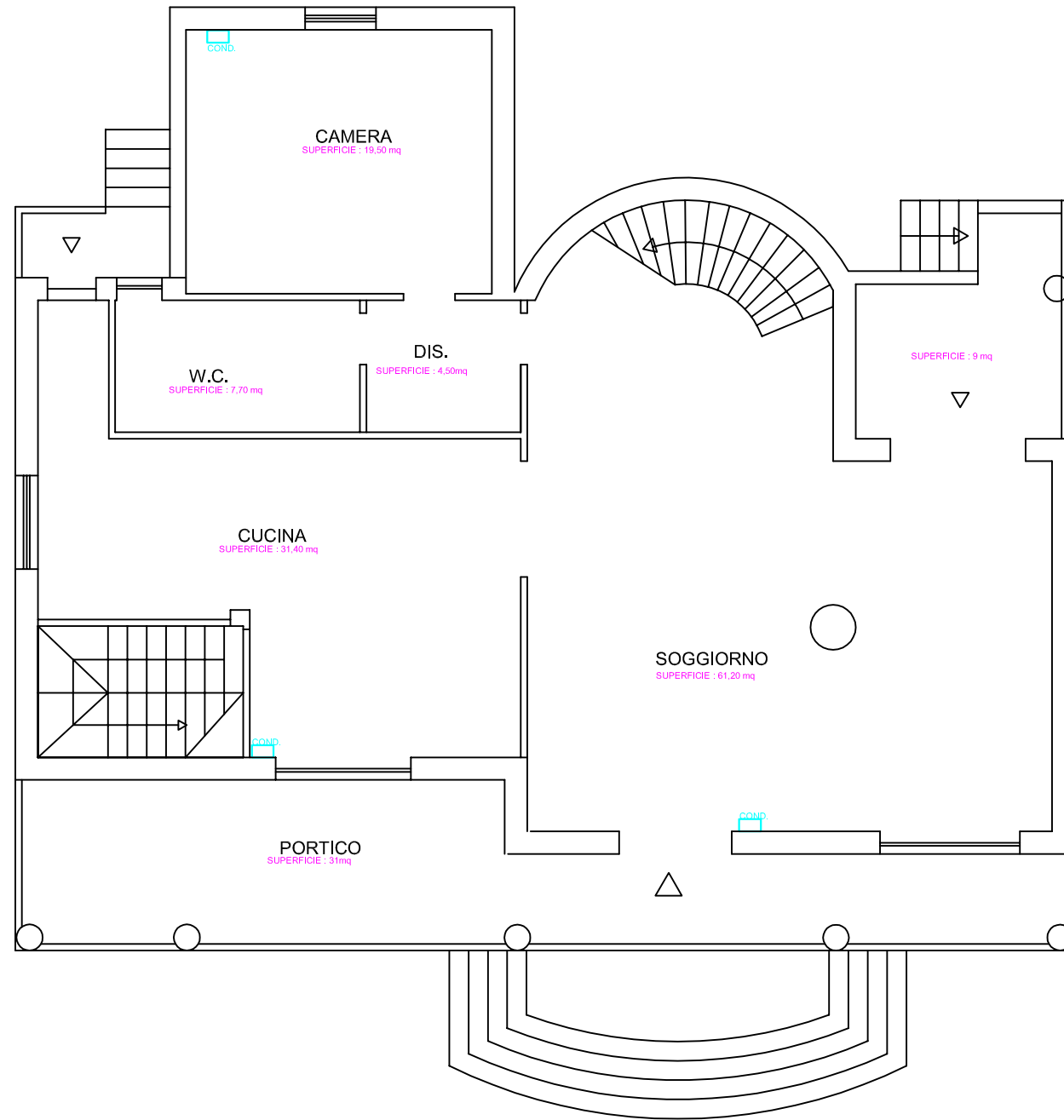
PIANTA PIANO TERRA  
H= 2.80m



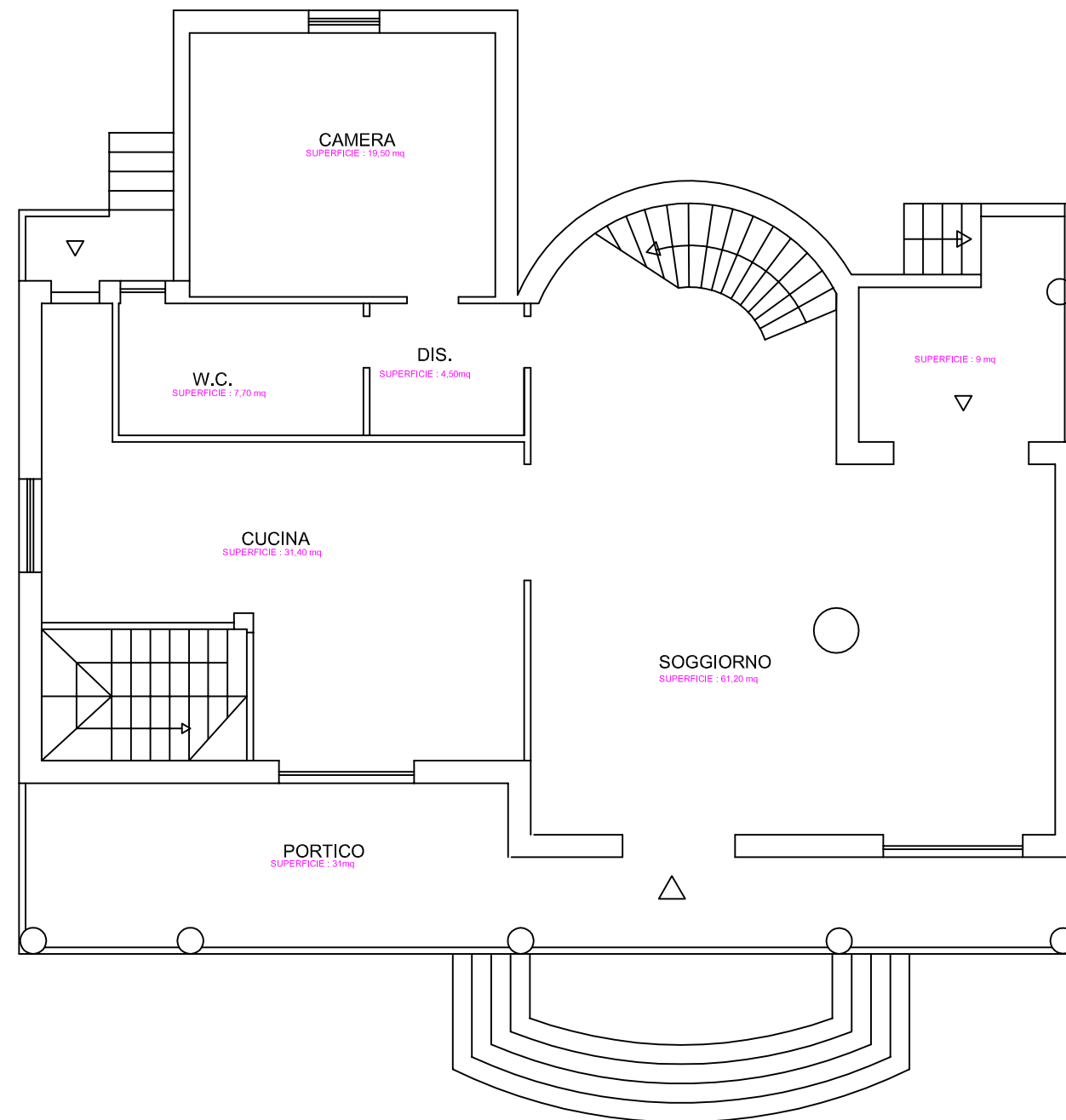
PIANTA PIANO TERRA  
H= 2.80m



PIANTA PIANO TERRA CON IMPIANTI  
H= 2.80m

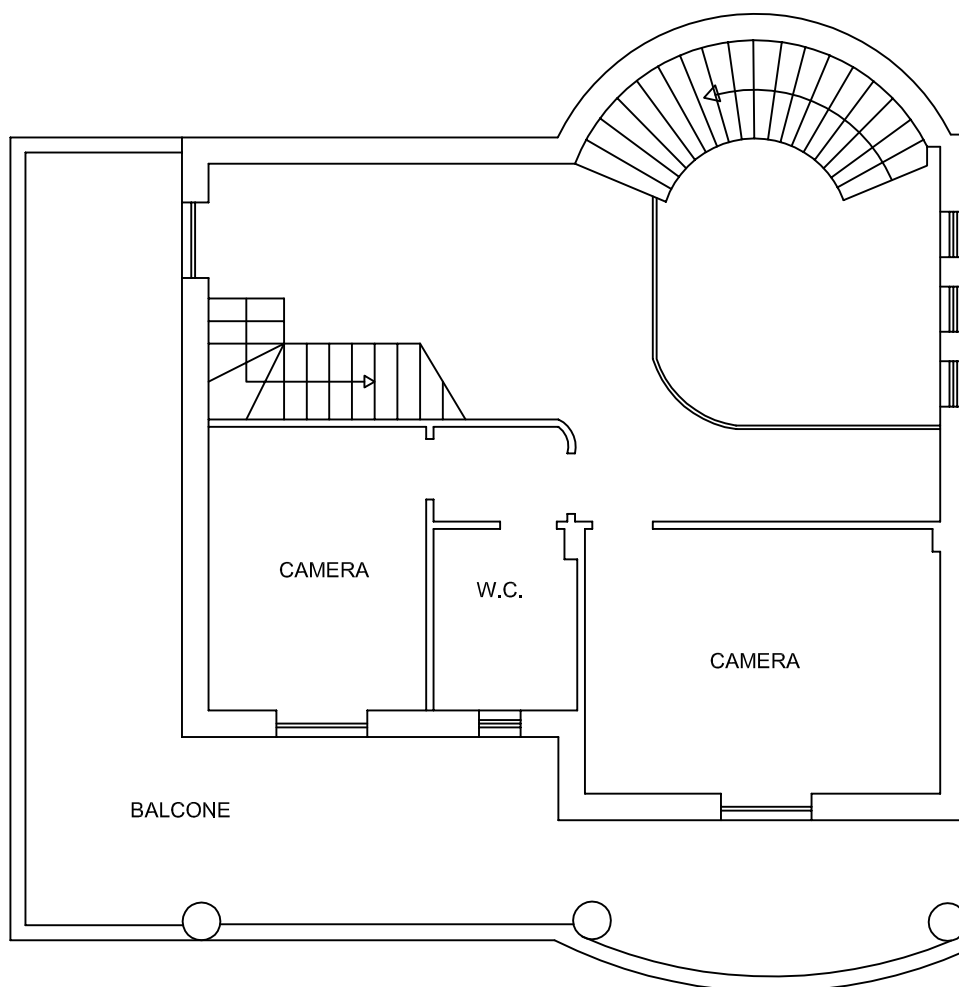


PIANTA PIANO TERRA  
H= 2.80m



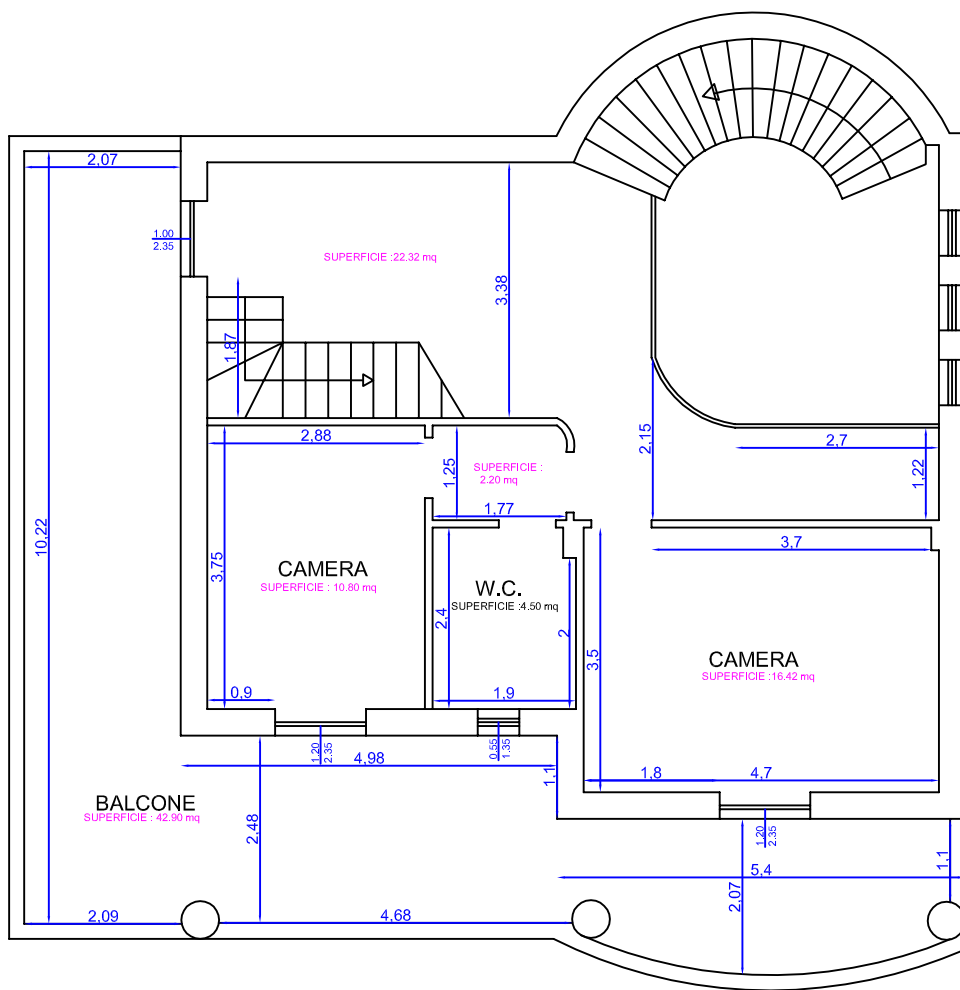
SUPERFICIE LORDA PIANO TERRA: 158,00 mq  
SUPERFICIE UTILE PIANO TERRA: 124.30 mq  
SUPERFICIE PORTICO PIANO TERRA: 42.30 mq

Pianta Piano primo  
H= 2.80m



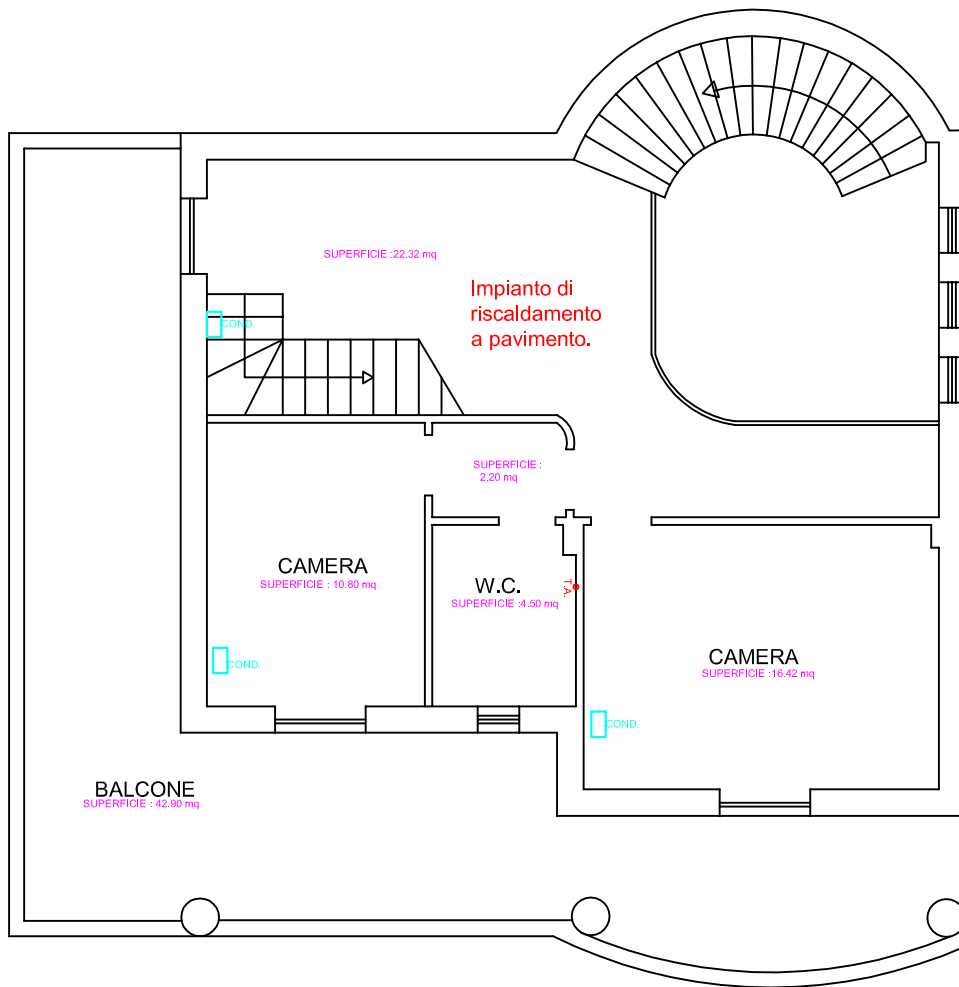
# Pianta Piano primo

H= 2.80m

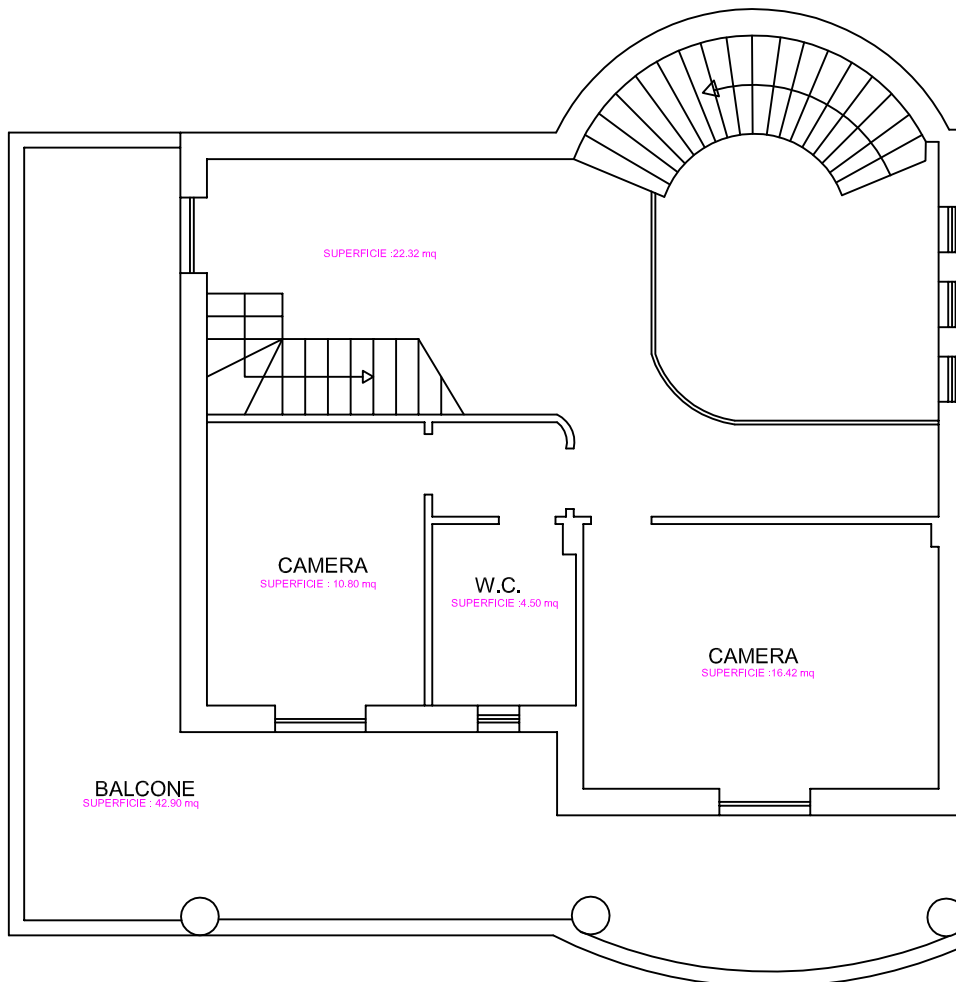


# Pianta Piano primo con impianti

## H= 2.80m

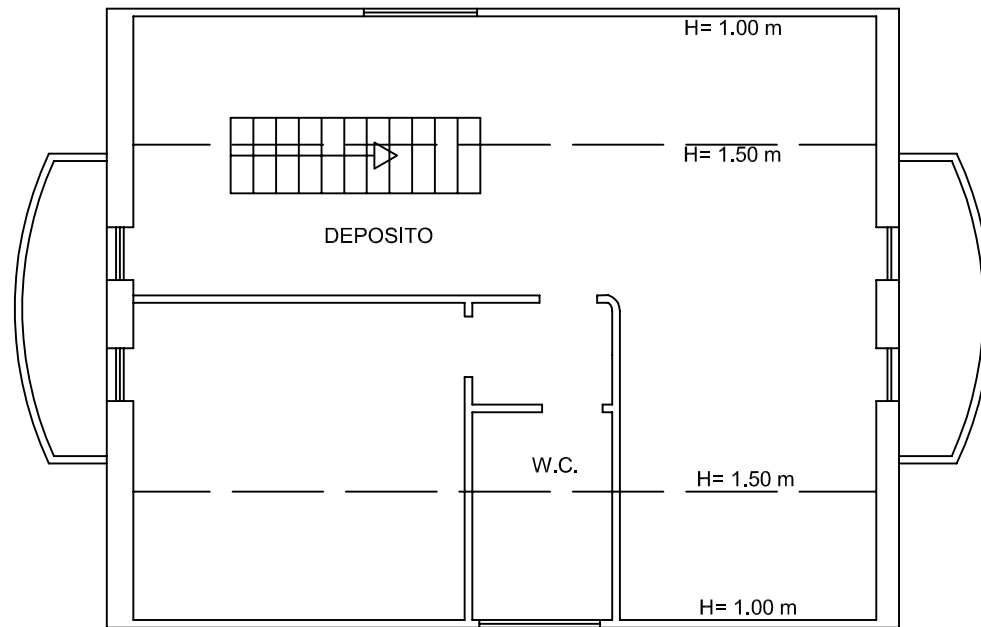


Pianta Piano primo  
H= 2.80m

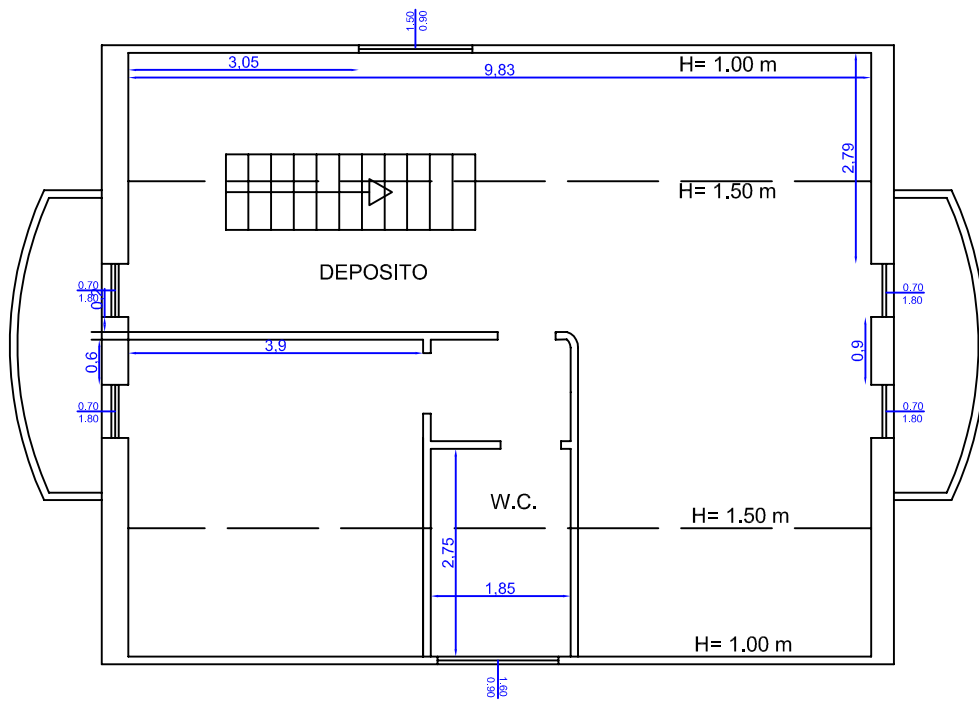


SUPERFICIE LORDA PIANO PRIMO: 90,00 mq  
SUPERFICIE UTILE PIANO PRIMO: 54.00 mq  
SUPERFICIE BALCONE PIANO PRIMO: 48.00 mq

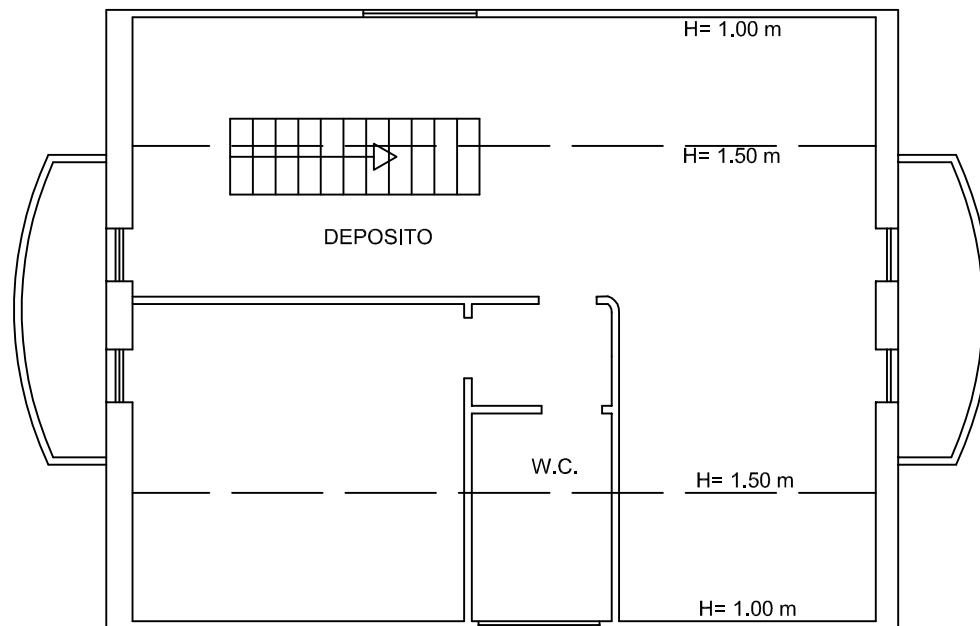
# PIANTA SOTTOTETTO



# PIANTA SOTTOTETTO



## PIANTA SOTTOTETTO

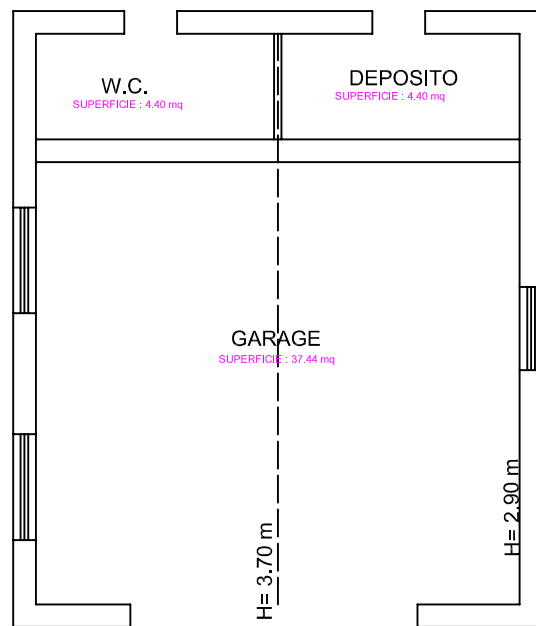


SUPERFICIE LORDA PIANO SECONDO SOTTOTETTO: 85.00 mq

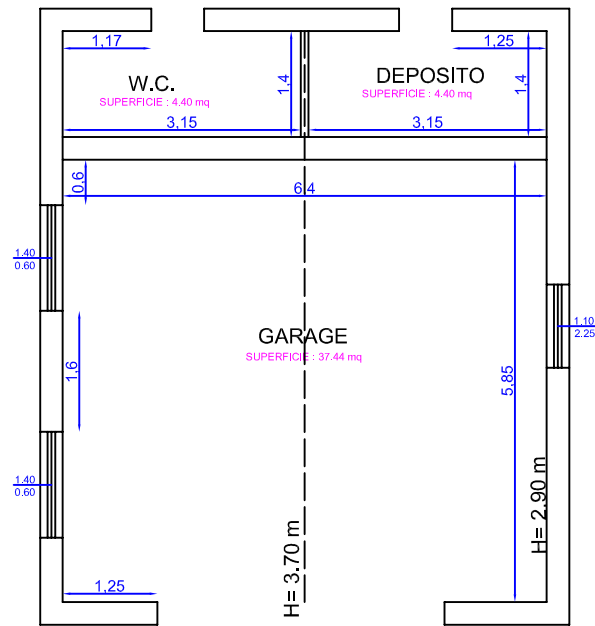
SUPERFICIE UTILE ABITABILE PIANO SECONDO SOTTOTETTO: 45.00 mq

SUPERFICIE BALCONI: 8.00 mq

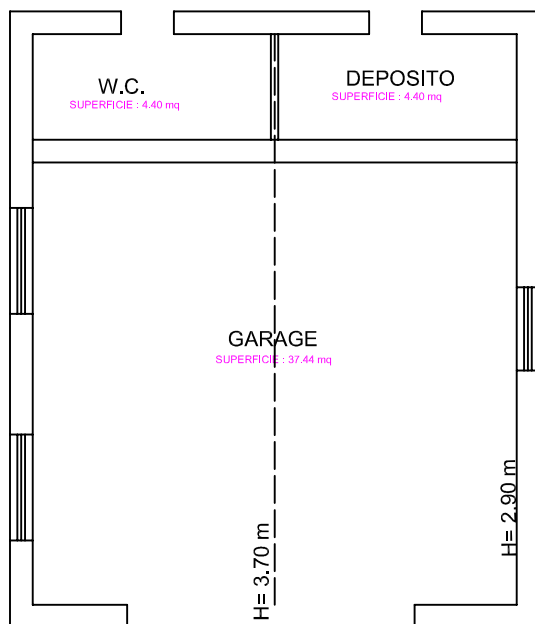
# PIANTA GARAGE



# PIANTA GARAGE



# PIANTA GARAGE

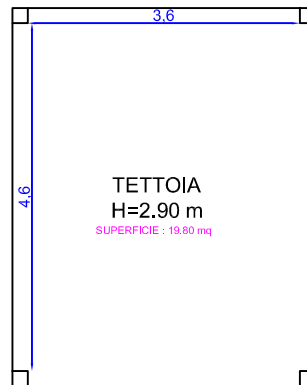


SUPERFICIE LORDA PIANTA GARAGE : 57 m<sup>2</sup>  
SUPERFICIE UTILE PIANTA GARAGE: 46.26 m<sup>2</sup>

## PIANTA TETTOIA



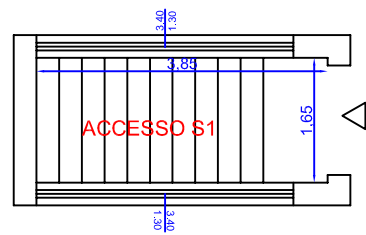
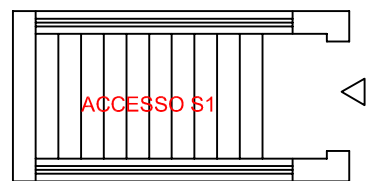
## PIANTA TETTOIA



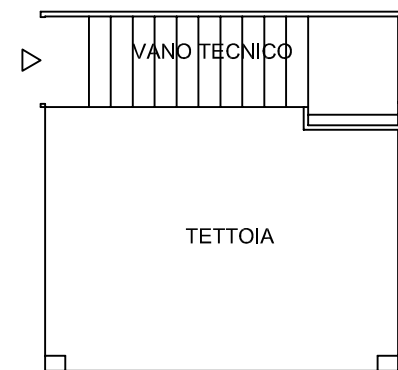
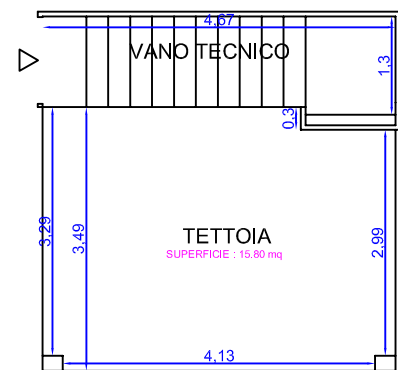
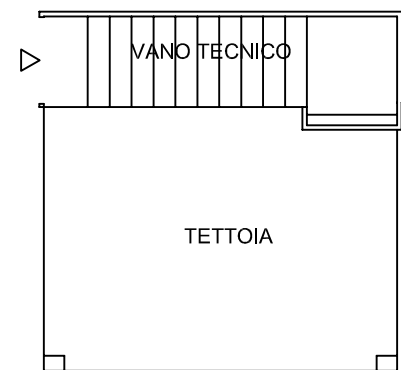
PIANTA TETTOIA



SUPERFICIE LORDA PIANTA GARAGE : 20 mq  
SUPERFICIE UTILE PIANTA GARAGE: 19.80 mq

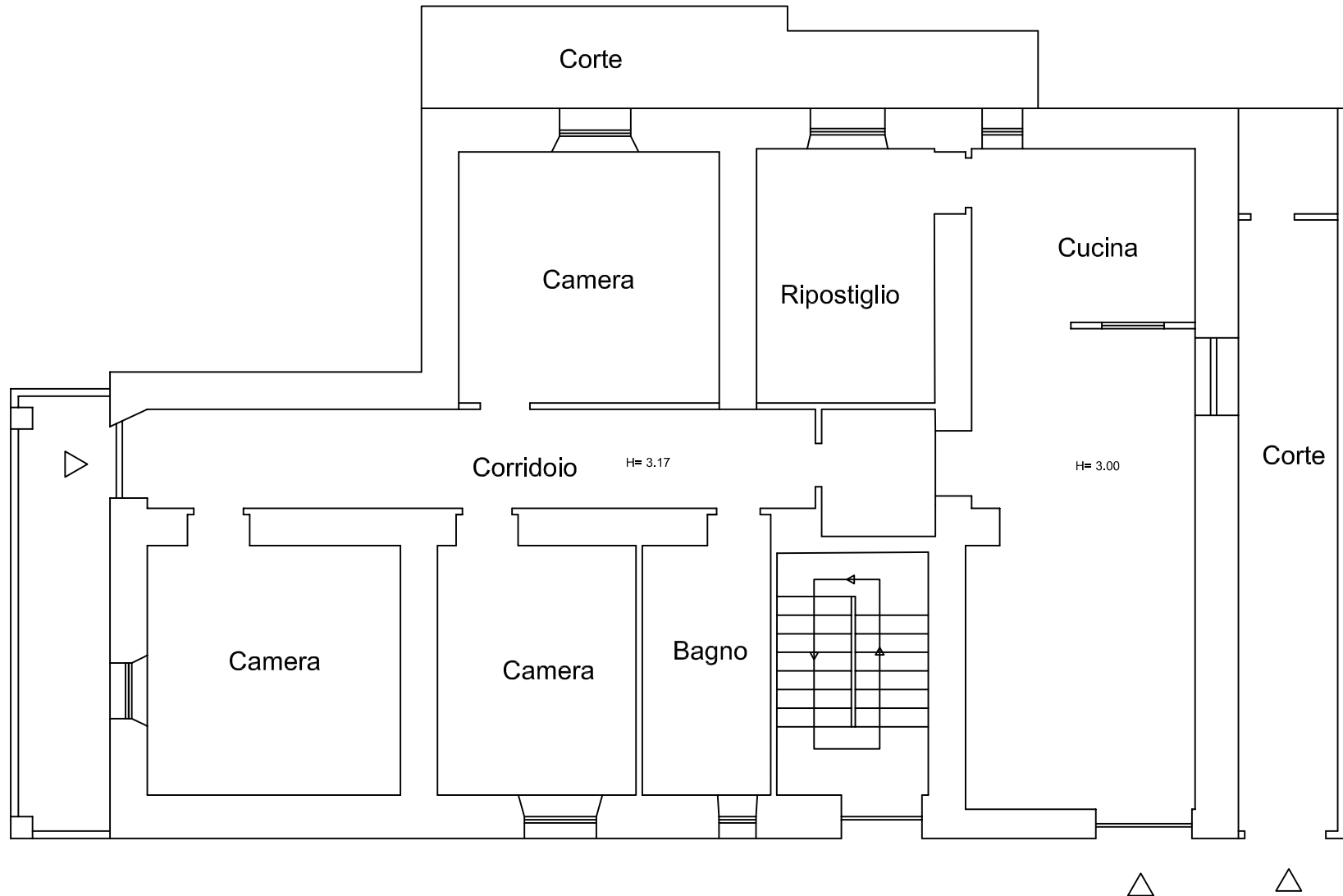


**SUPERFICIE LORDA ACCESSO S1: 10 mq**  
**SUPERFICIE UTILE ACCESSO S1: 6.35 mq**

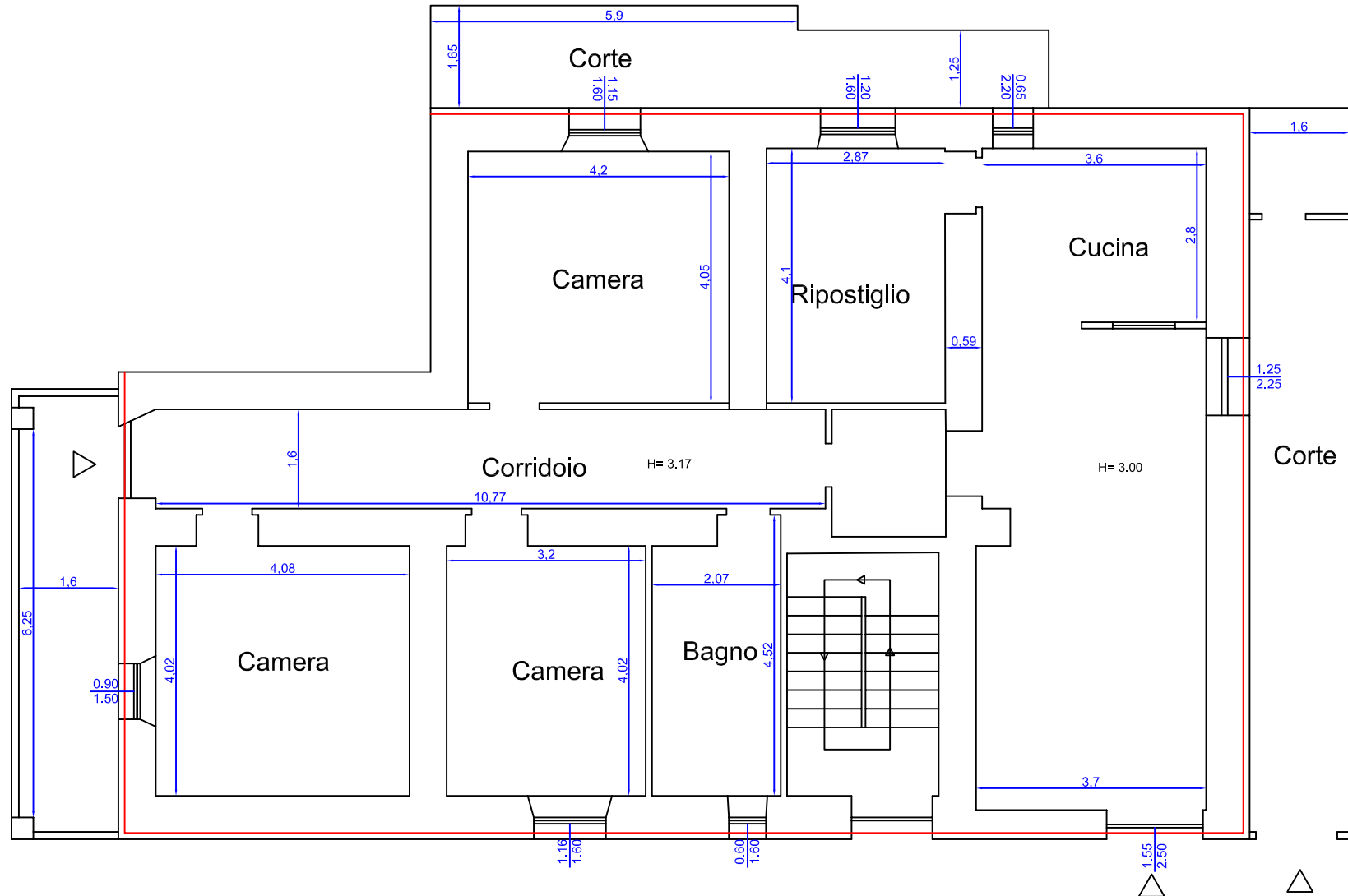


SUPERFICIE LORDA TETTOIA /VANO TECNICO : 22.40 mq  
SUPERFICIE UTILE TETTOIA /VANO TECNICO : 21.70 mq

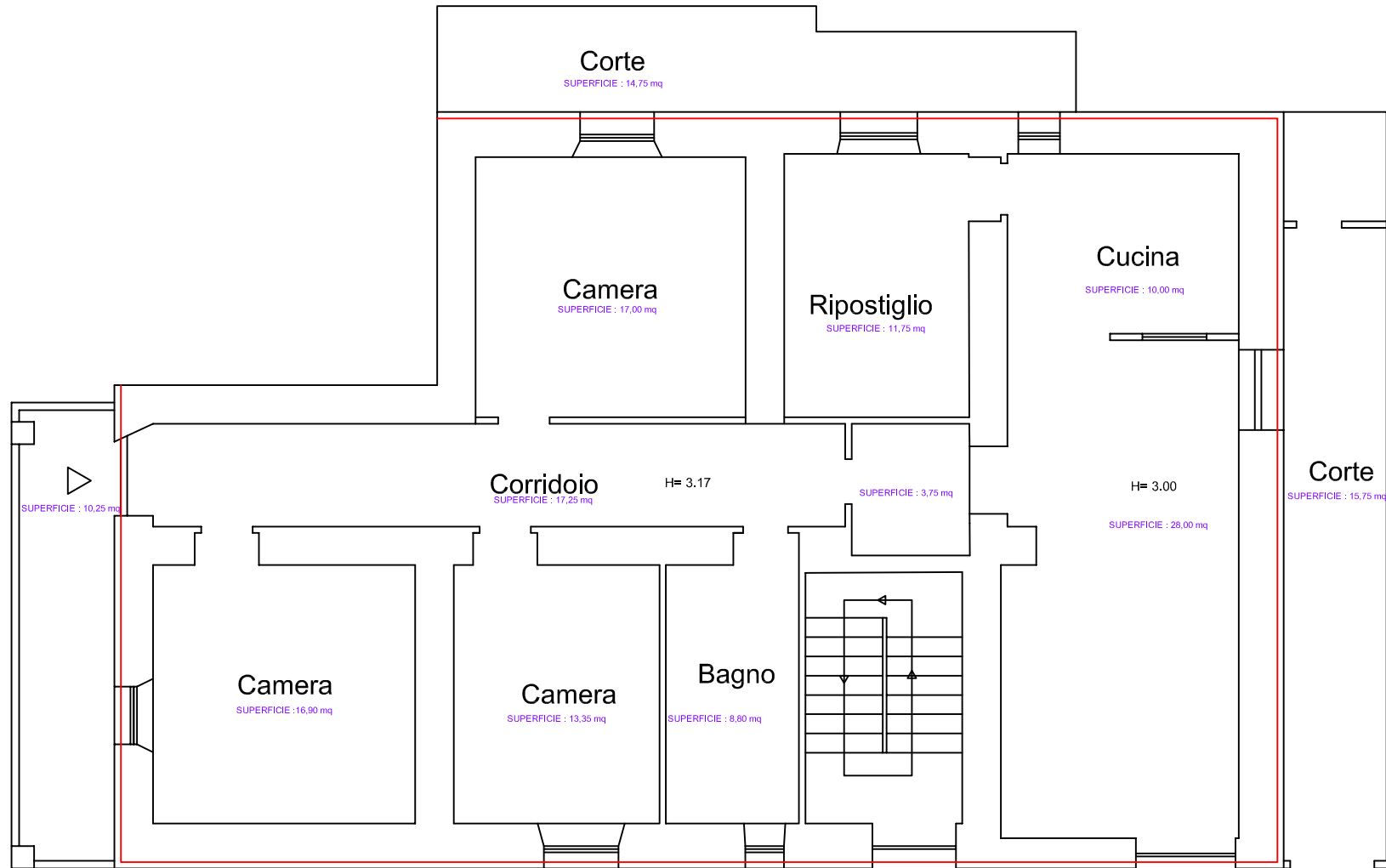
# PIANO TERRA



# PIANO TERRA



# PIANO TERRA



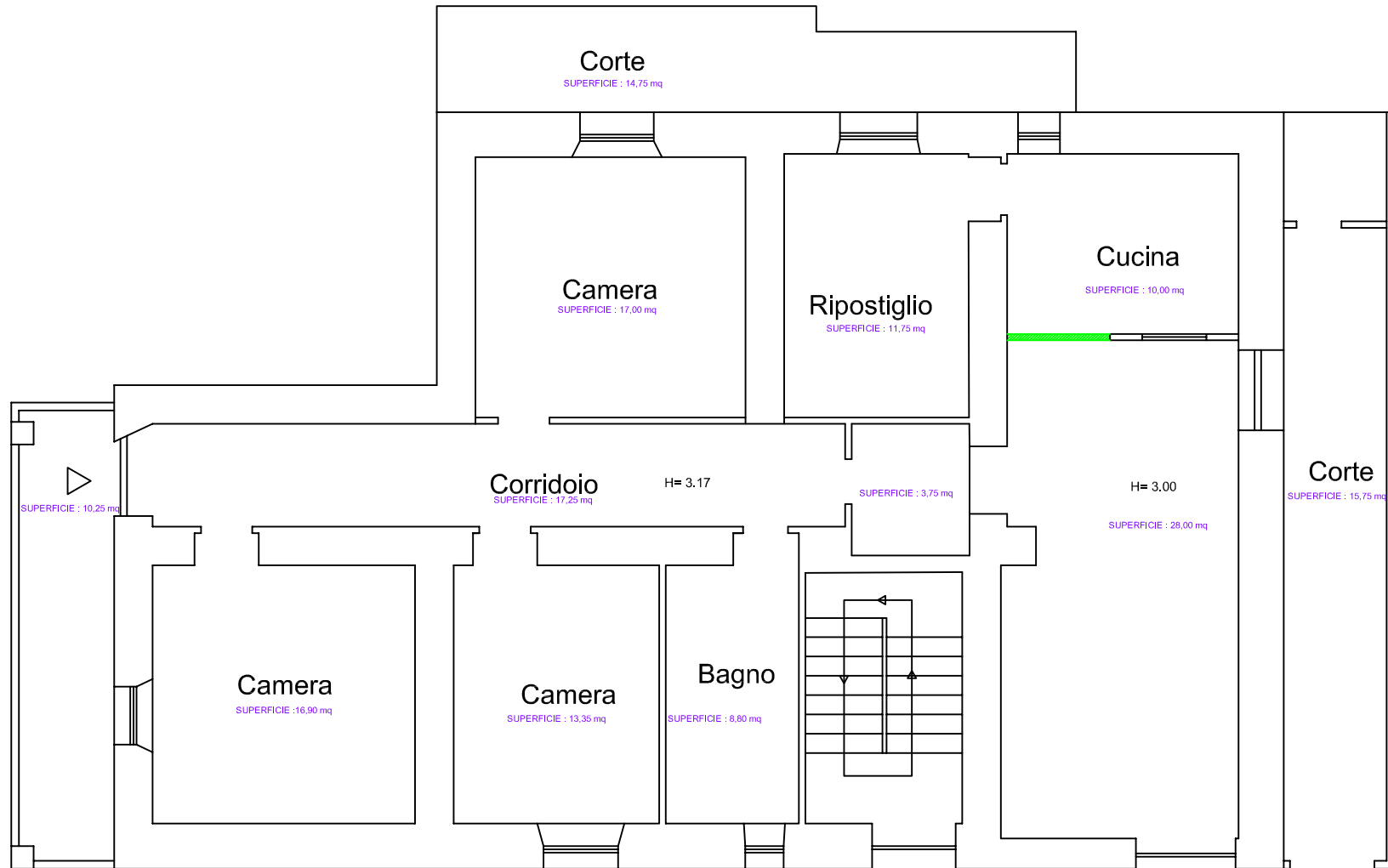
SUPERFICIE LORDA PIANTA PIANO TERRA : 180.00 mq

SUPERFICIE UTILE PIANTA PIANO TERRA ; 127.00 mq

SUPERFICIE CORTE PIANO TERRA : 35.00q

SUPERFICIE PORTICO PIANO TERRA : 12.00 mq

# PIANO TERRA

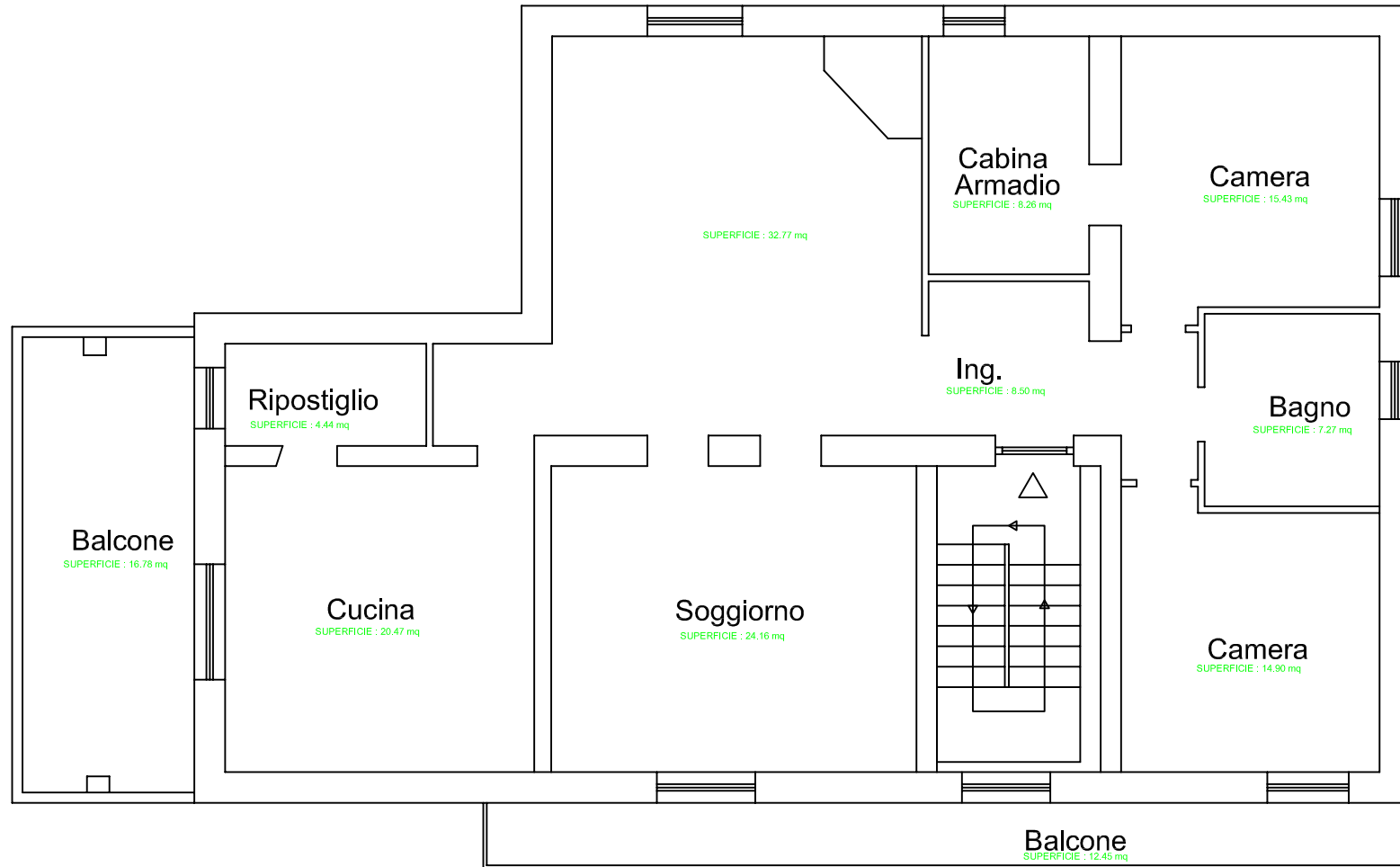


Diffornità



# PIANO PRIMO

H= 2.97

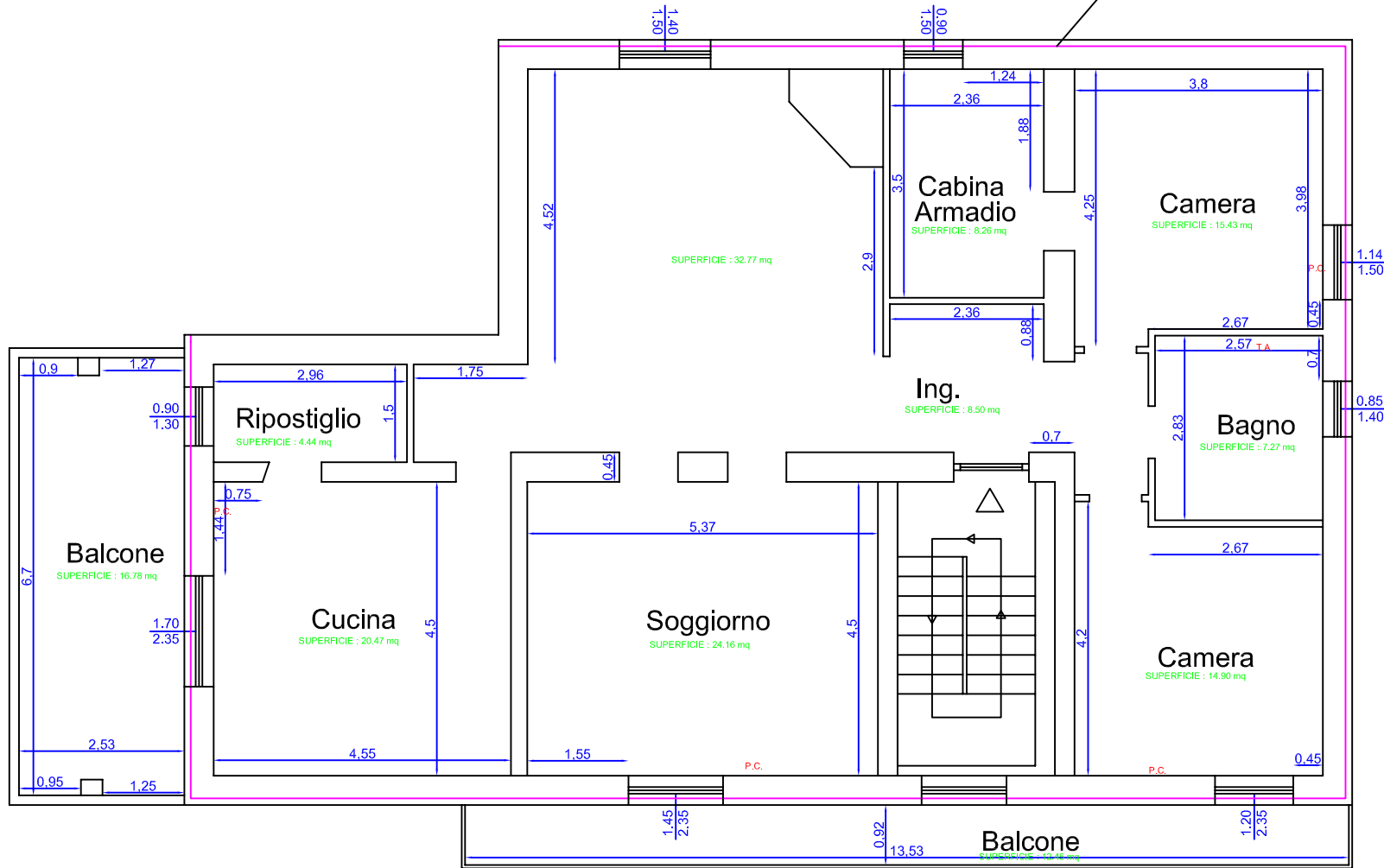


INFISSI IN PVC

# PIANO PRIMO

H= 2.97

CAPPOTTO ESTERNO DA 10 CM

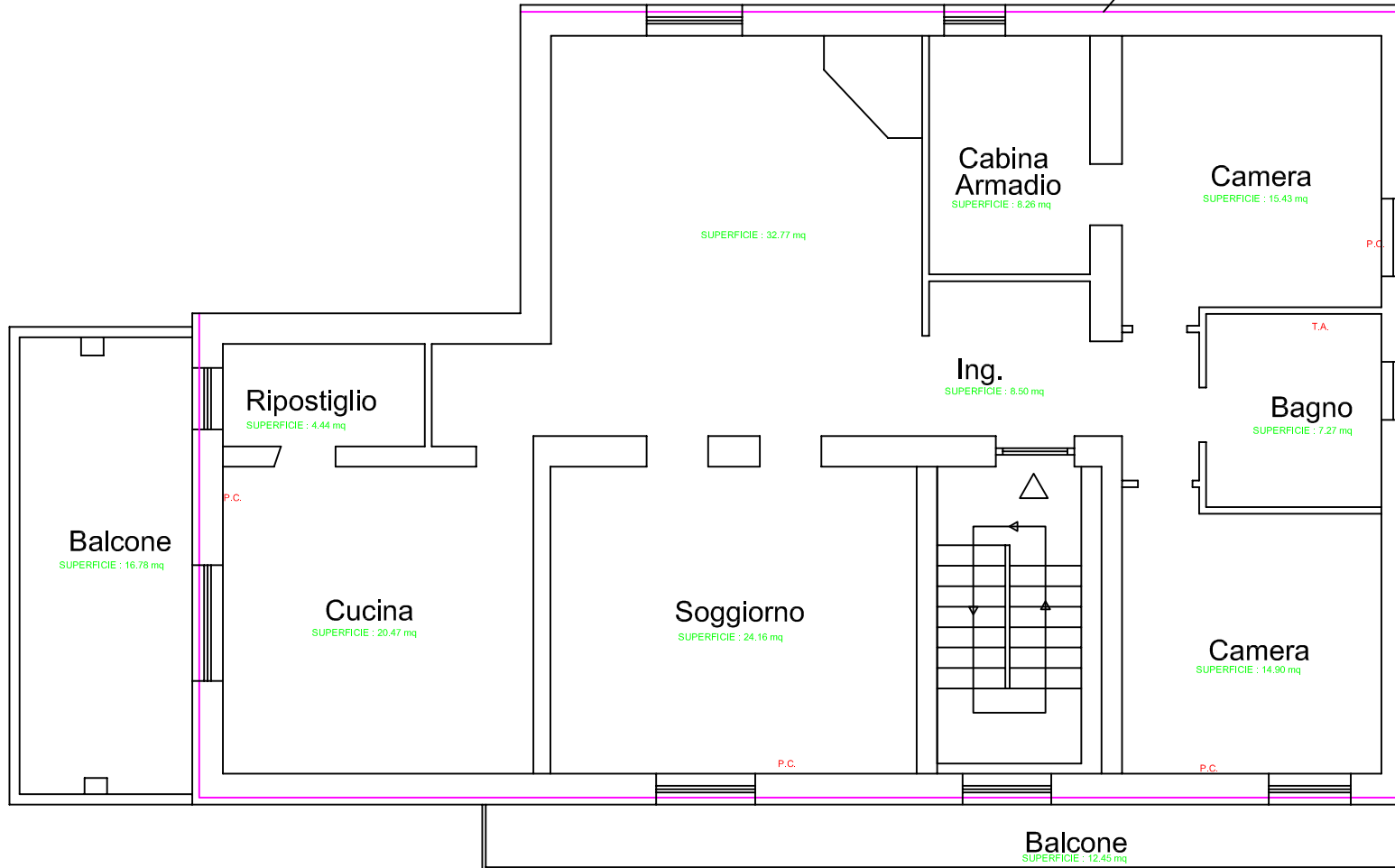


INFISSI IN PVC

# PIANO PRIMO

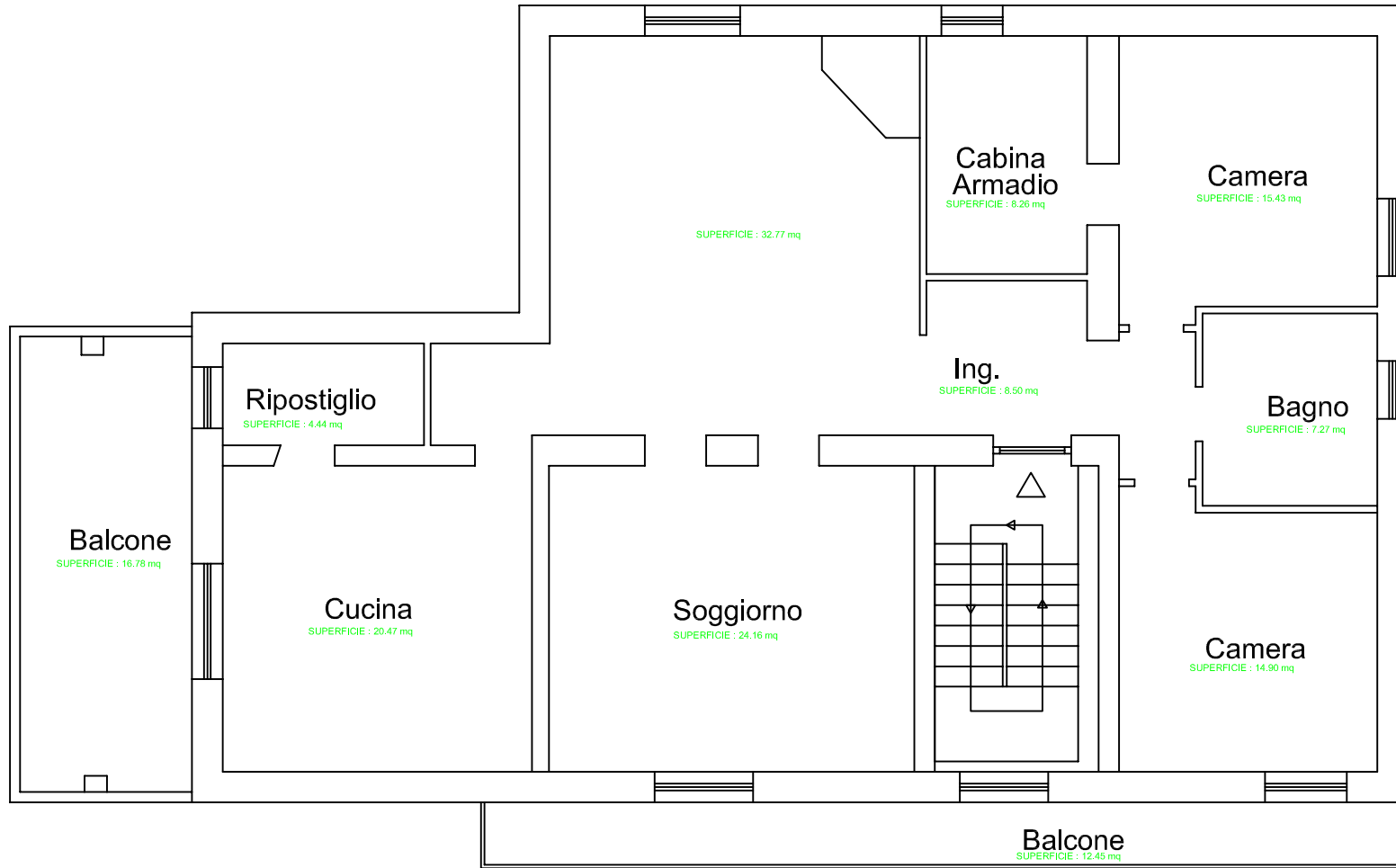
H= 2.97

CAPPOTTO ESTERNO DA 10 CM



# PIANO PRIMO

H= 2.97



SUPERFICIE LORDA PIANO PRIMO: 176.00 mq

SUPERFICIE UTILE PIANTA PIANO PRIMO: 136.00 mq

SUPERFICIE BALCONI PIANTA PIANO PRIMO: 29.00 mq

**Tribunale di Catanzaro**

**PROCEDURA CONCURSALE**

Liquidazione Giudiziale N° 20/2024

Ditta : [REDACTED]

*DOCUMENTAZIONE FOTOGRAFICA*

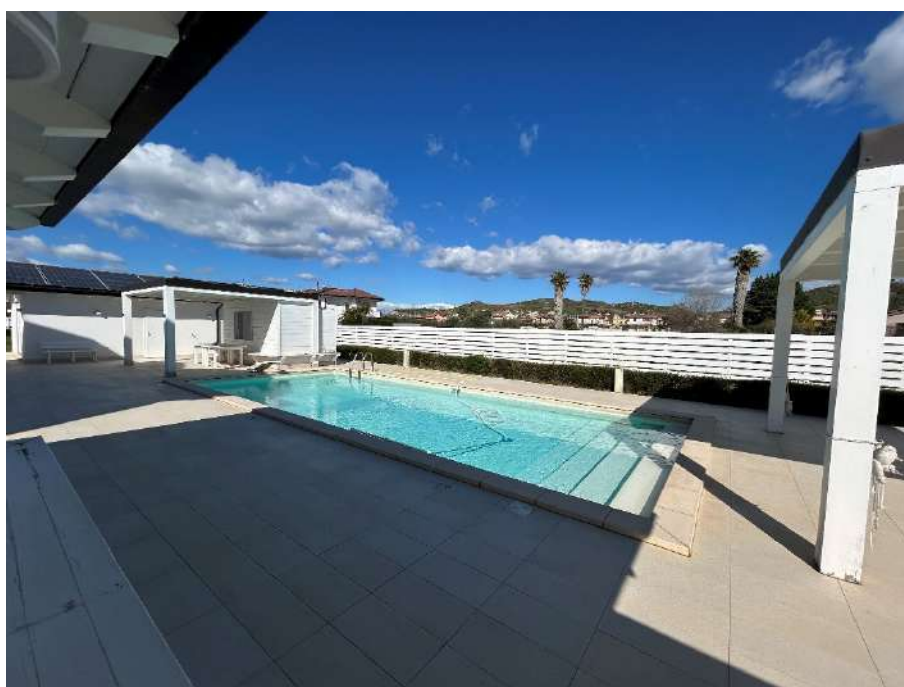
---

[REDACTED]

# Documentazione Fotografica

Sopralluogo del 17.03.2025

Foto esterne Abitazione sita in Botricello Via Portofino F. 6 p.la 4933  
subb. 2 e 3









## Vista interna

Foto interne Abitazione sita in Botricello Via Portofino F. 6 p.la 4933  
subb. 2 e 3

















