

## INQUADRAMENTO TERRITORIALE



## FOTO ESTERNO

Foto dalla strada





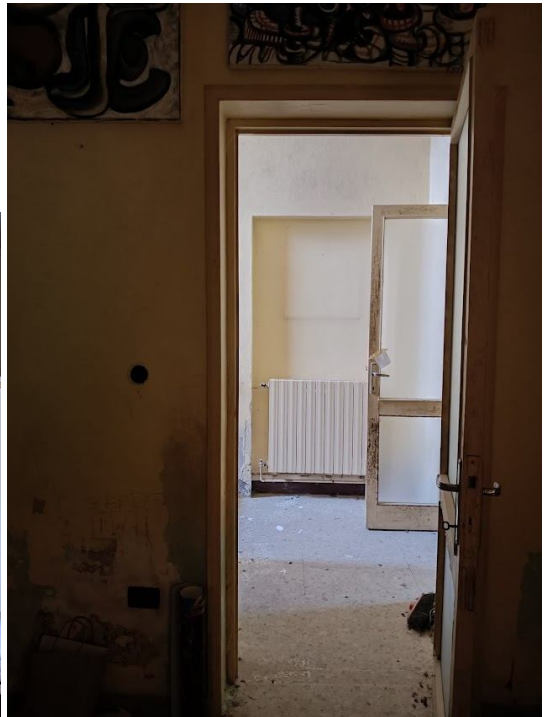
Foto dal cortile



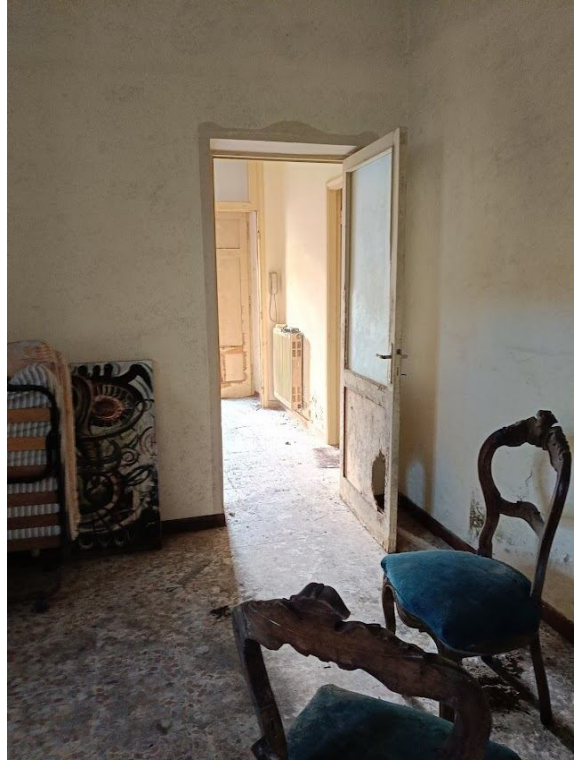


**FOTO INTERNO**  
**ZONA GIORNO (piano terra):**  
**ingresso, soggiorno, sala da pranzo, cucina e bagno (sottoscala)**

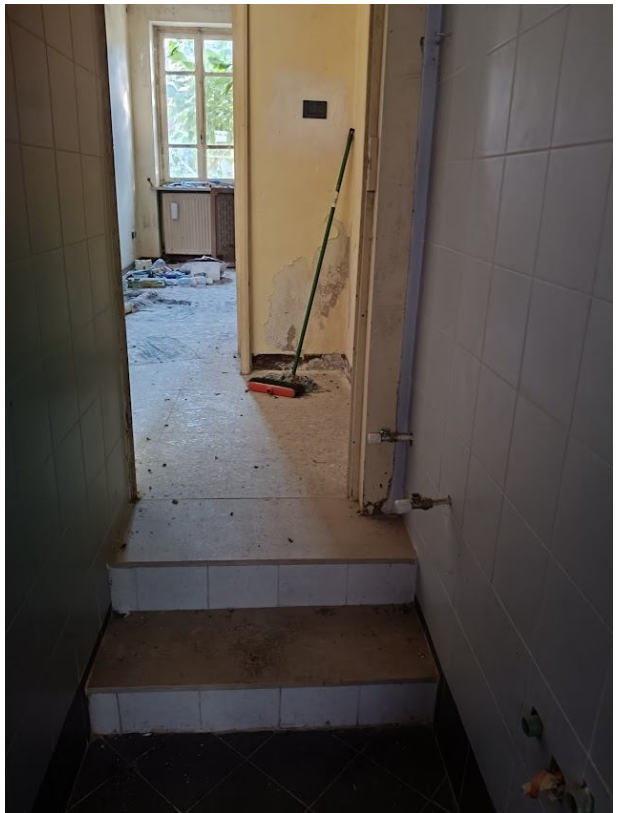
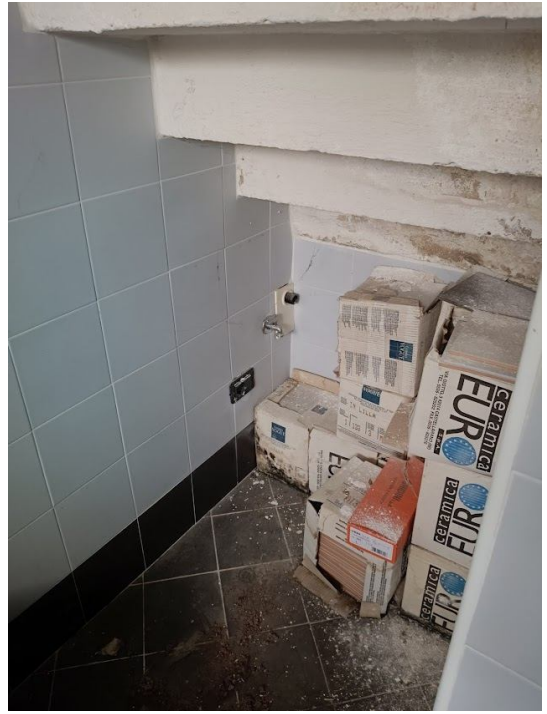




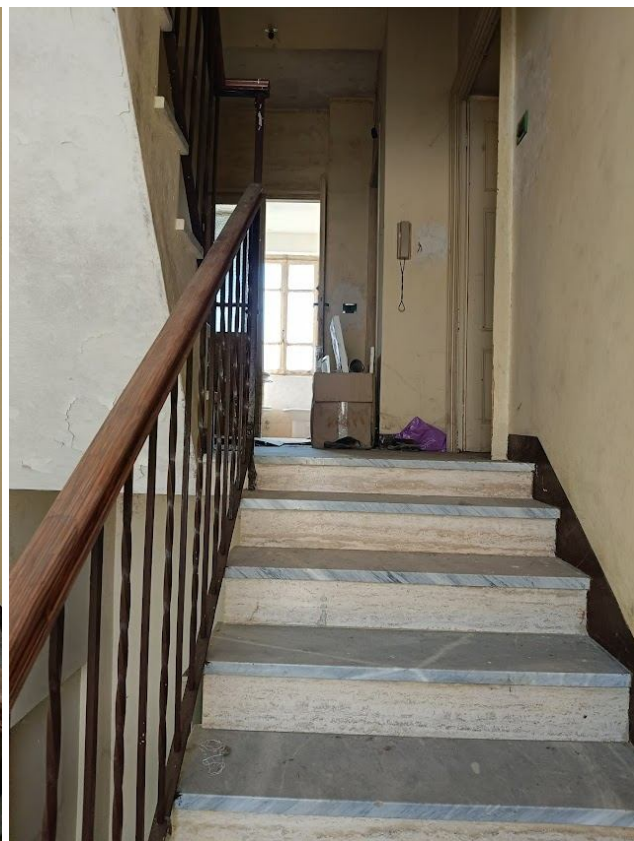
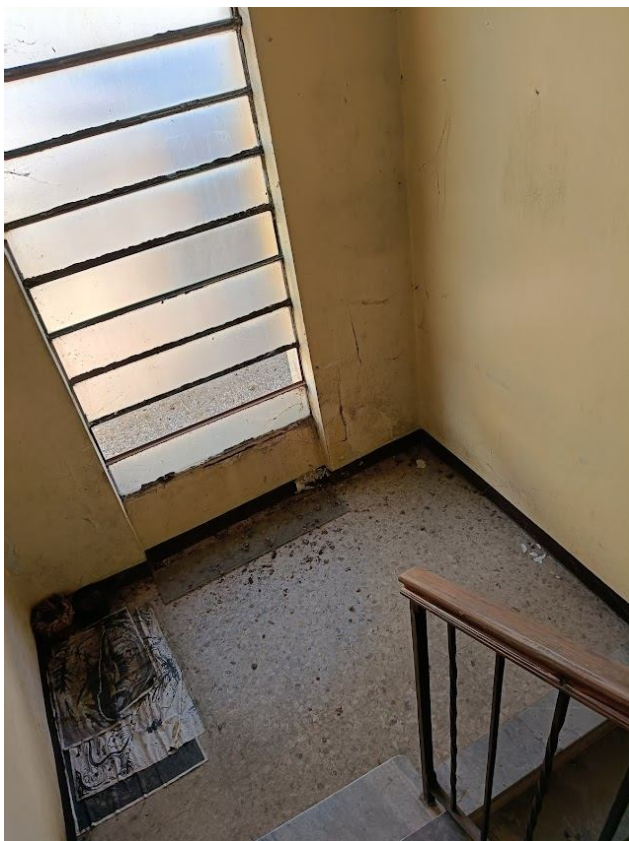
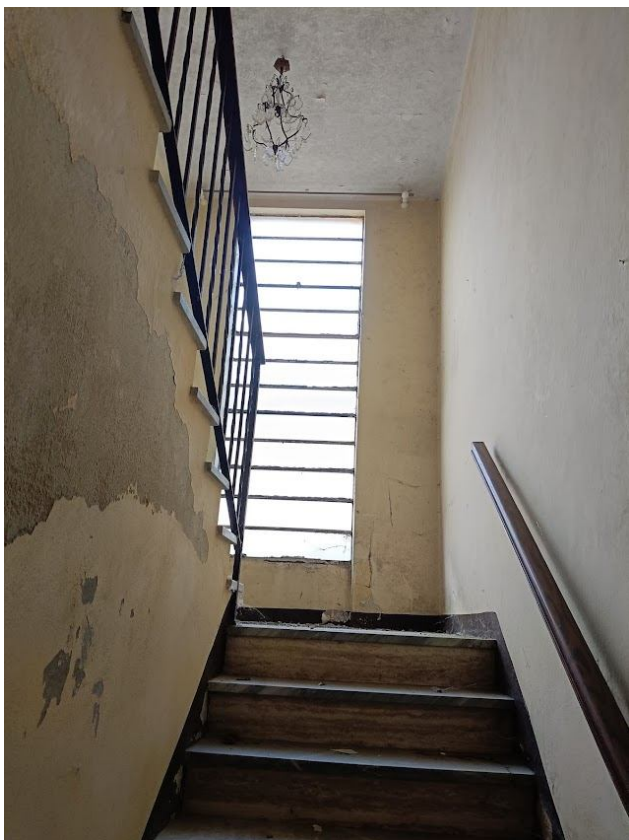




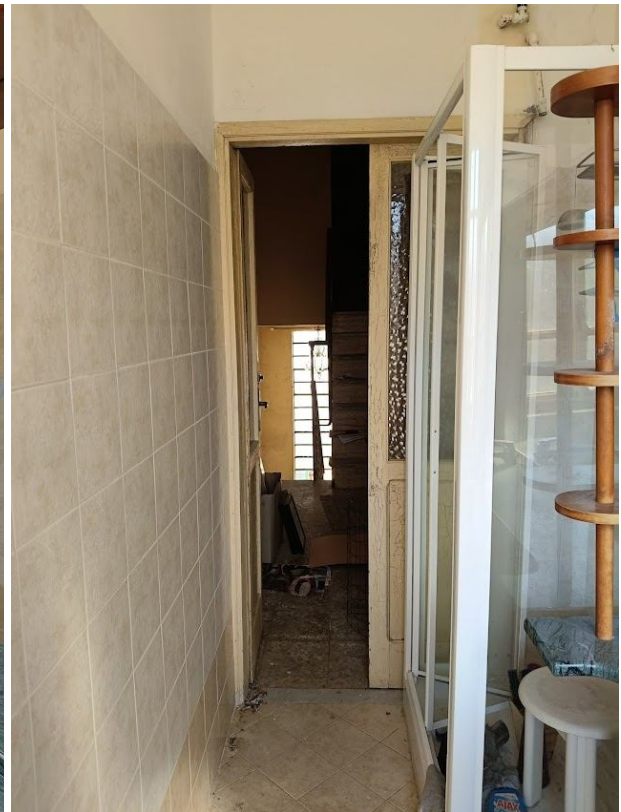


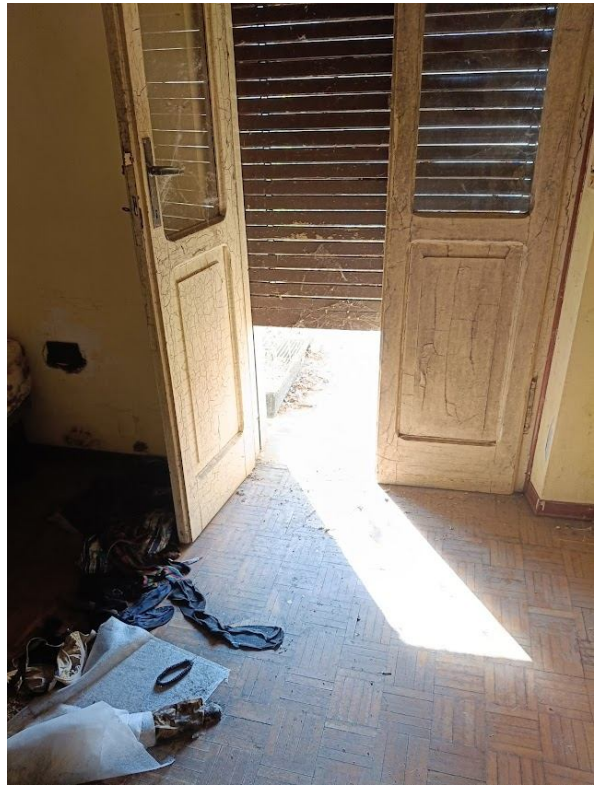


## Scala interna

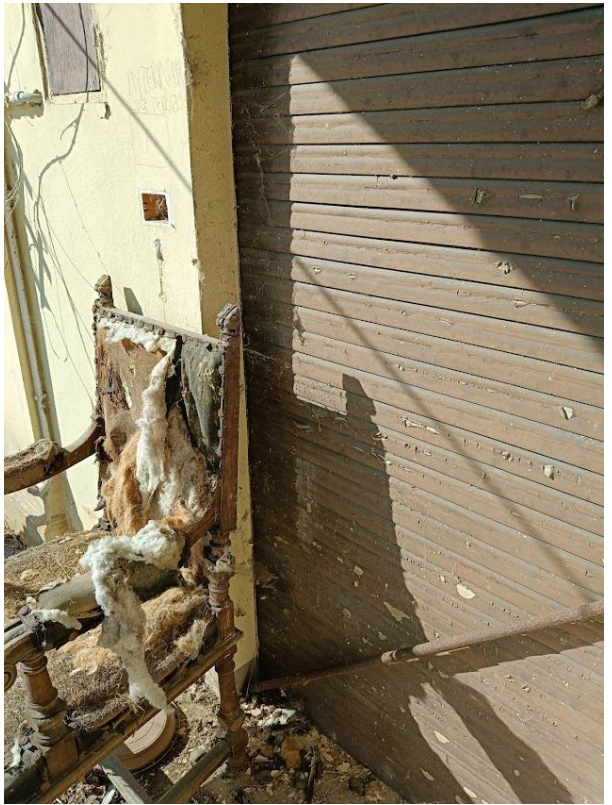


**ZONA NOTTE (piano primo):  
bagno, due camere da letto e terrazzo**









ripostiglio

