





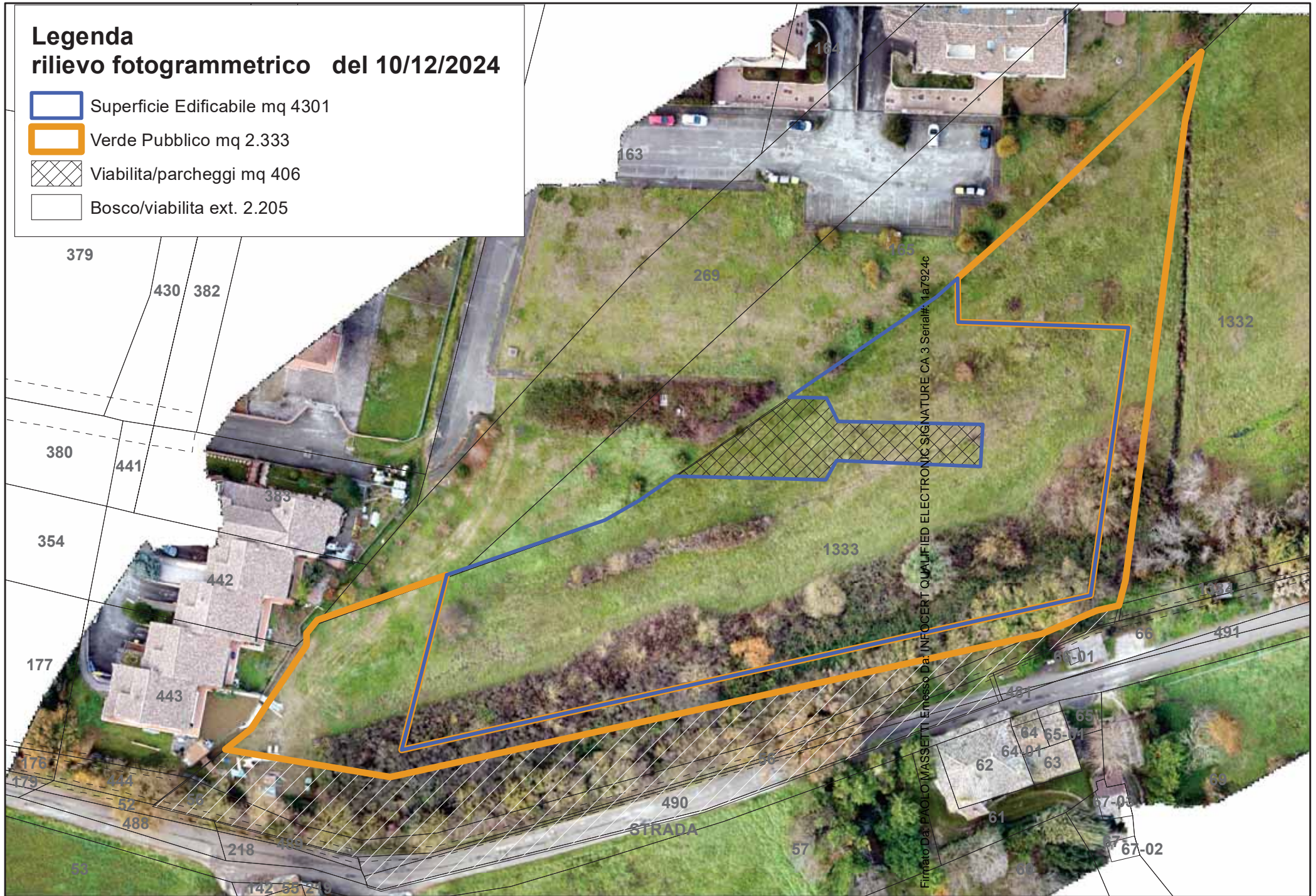
ES.IMM 217/2024

ALL. 5
Documentazione
fotografica
e
fotogrammetrica



Legenda rilievo fotogrammetrico del 10/12/2024

-  Superficie Edificabile mq 4301
-  Verde Pubblico mq 2.333
-  Viabilita'/parcheggi mq 406
-  Bosco/viabilita ext. 2.205





Firmato Da: PAOLO MASSETTI Emesso Da: INFOCERT QUALIFIED ELECTRONIC SIGNATURE CA.3 Serial#: 1a7924c





Firmato Da: PAOLO MASSETTI e Associati Da: INFOCER




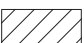


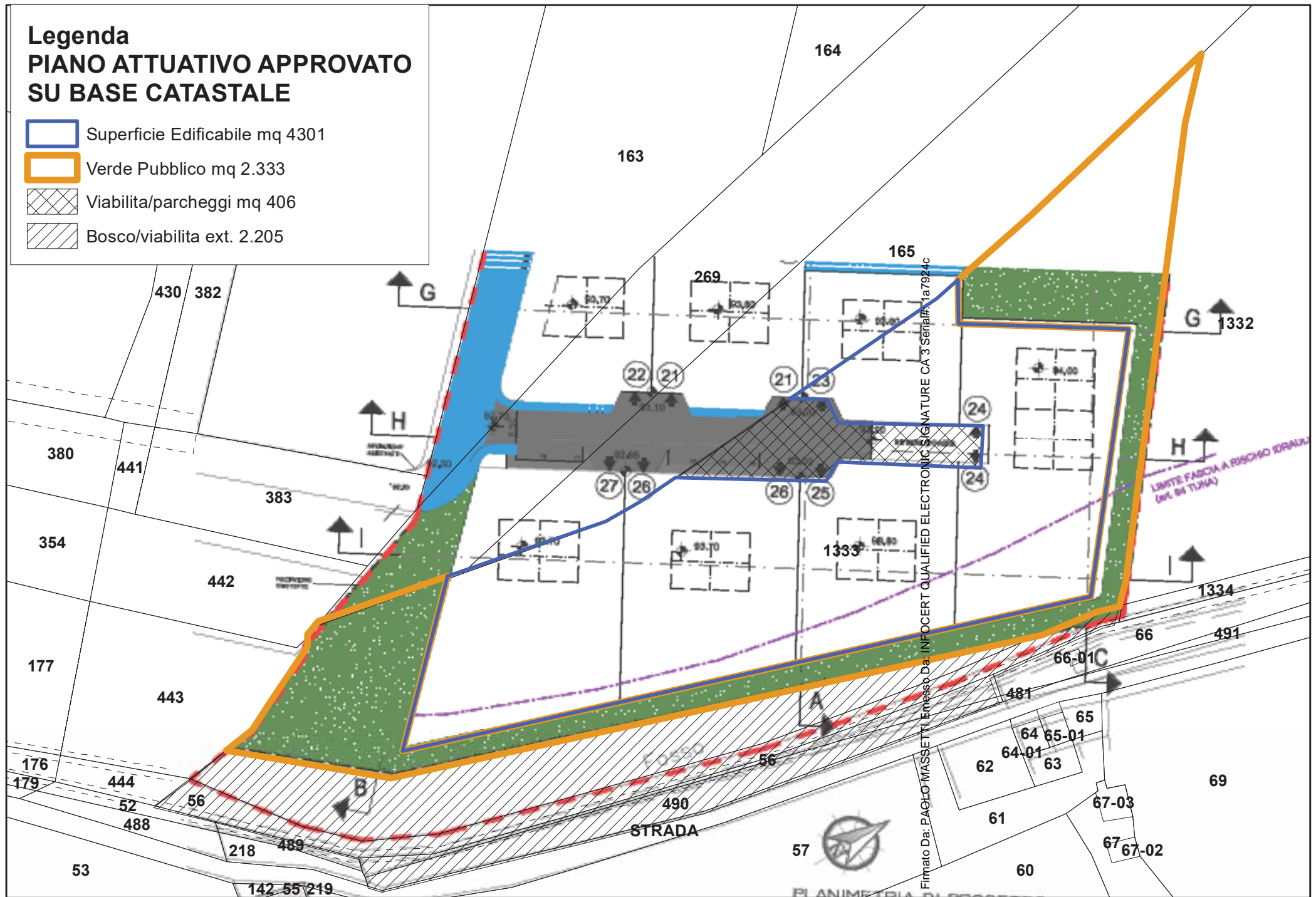


Firmato Da: PAOLO MASSETTI | Ingresso Da: INFOCERT QUALIFIED ELECTRONIC SIGNATURE CA. 3 | Serial#: 1a7924c



Legenda PIANO ATTUATIVO APPROVATO SU BASE CATASTALE

-  Superficie Edificabile mq 4301
-  Verde Pubblico mq 2.333
-  Viabilita/parcheggi mq 406
-  Bosco/viabilita ext. 2.205



Firmato Da: PACHO MASSETTI Emesso Da: INFOCERT QUALIFIED ELECTRONIC SIGNATURE CA 3 Serial#: 1a7924c

