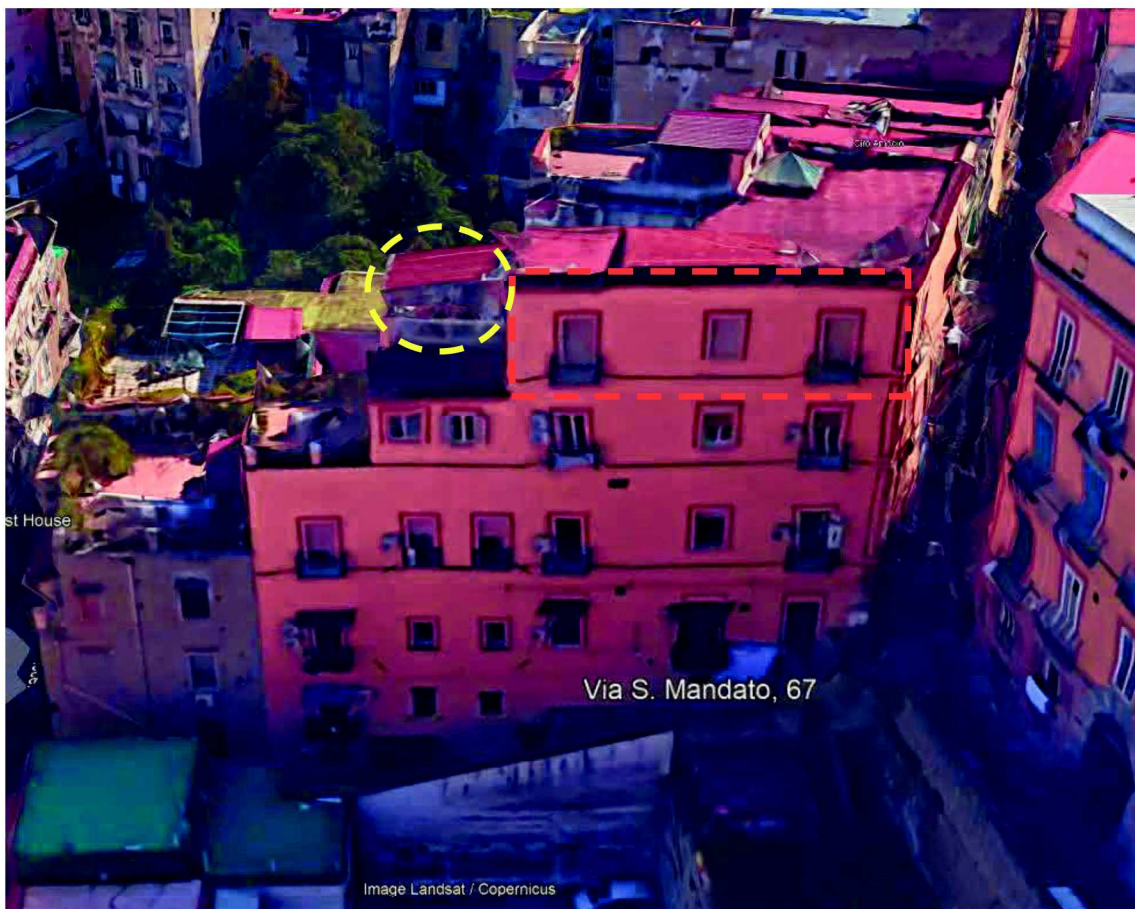


DOCUMENTAZIONE FOTOGRAFICA



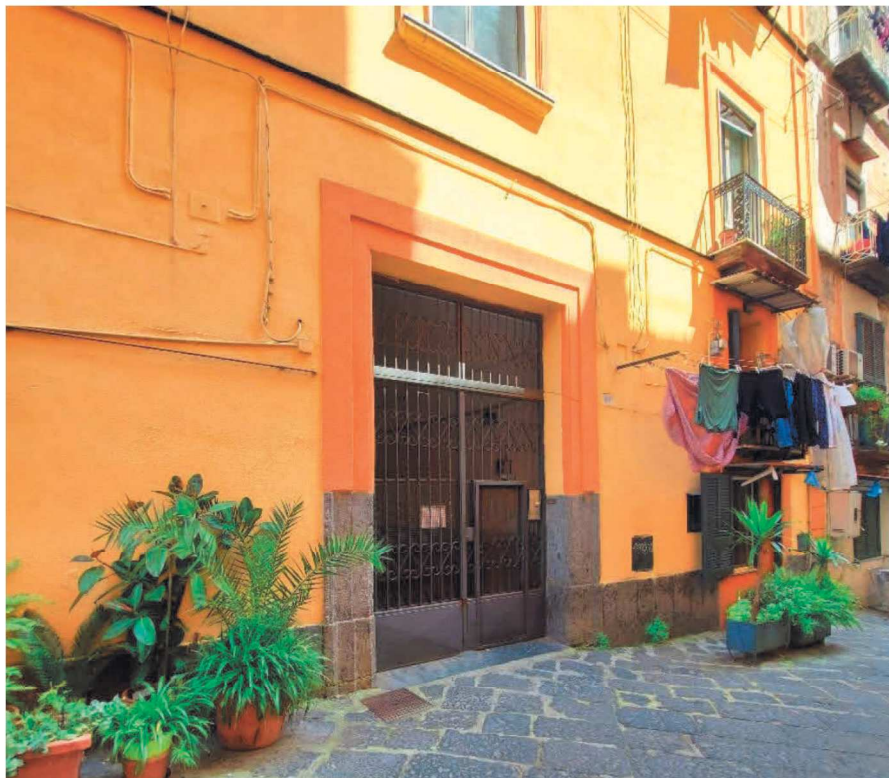
inquadramento territoriale - fabbricato del cespite pignorato



prospetto nord-ovest fabbricato - Gradini san Mandato - indicazione affacci cespite (rosso) e terrazzo (giallo)



Prospetto sud fabbricato –via san Mandato - indicazione affacci cespite e accesso civ.67



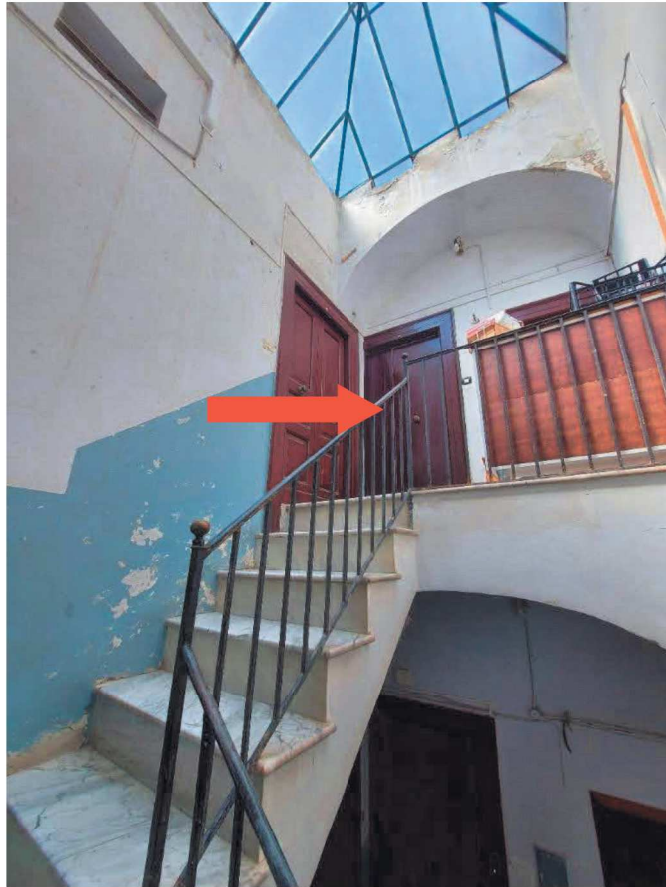
Via San Mandato- Accesso fabbricato civ.10



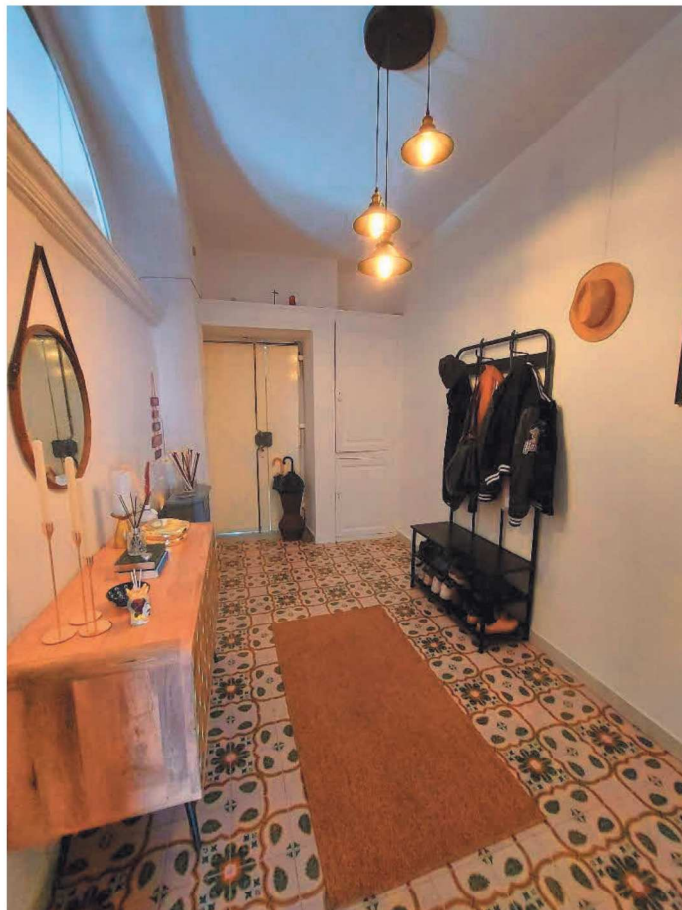
Cortile condominiale – indicazione accesso vano scala cespite



vano scala cespite



pianerottolo 4 piano – porta caposcala cespite int.12



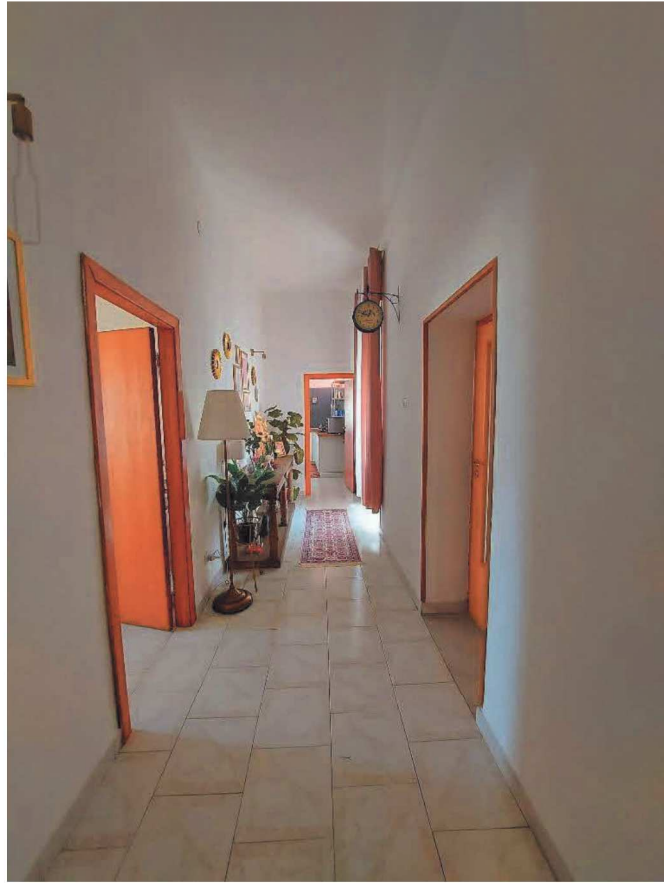
Ingresso



Ingresso



disimpegno



disimpegno



disimpegno



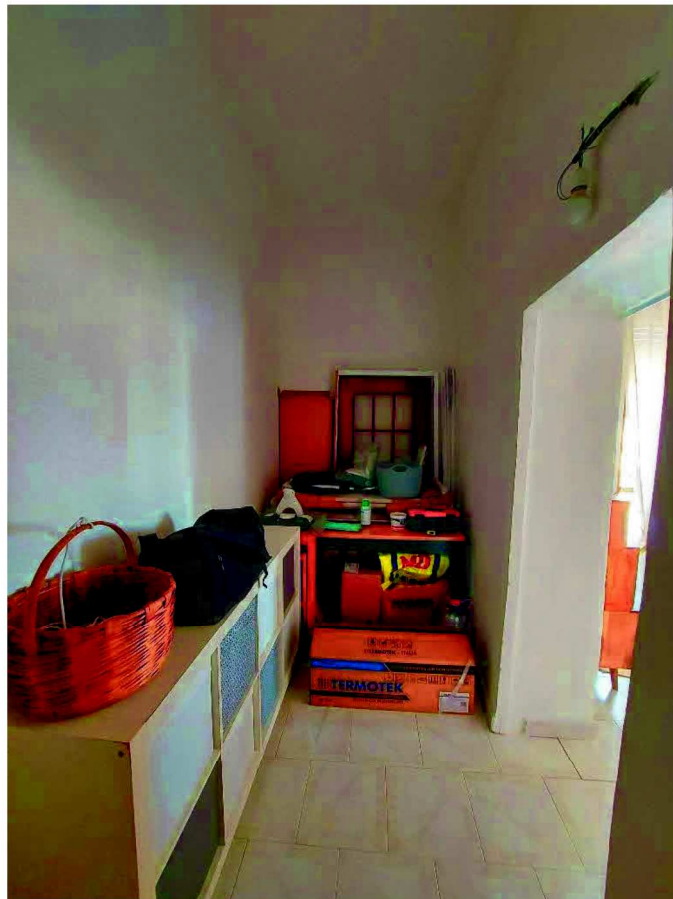
Cucina



cucina



Cucina



ripostiglio



Camera L2



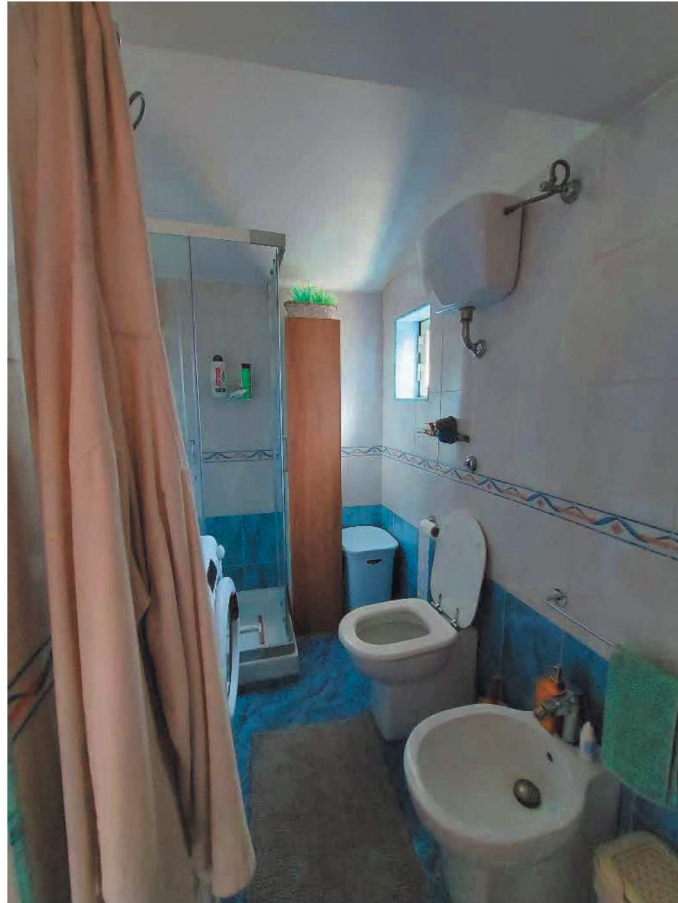
Camera L2



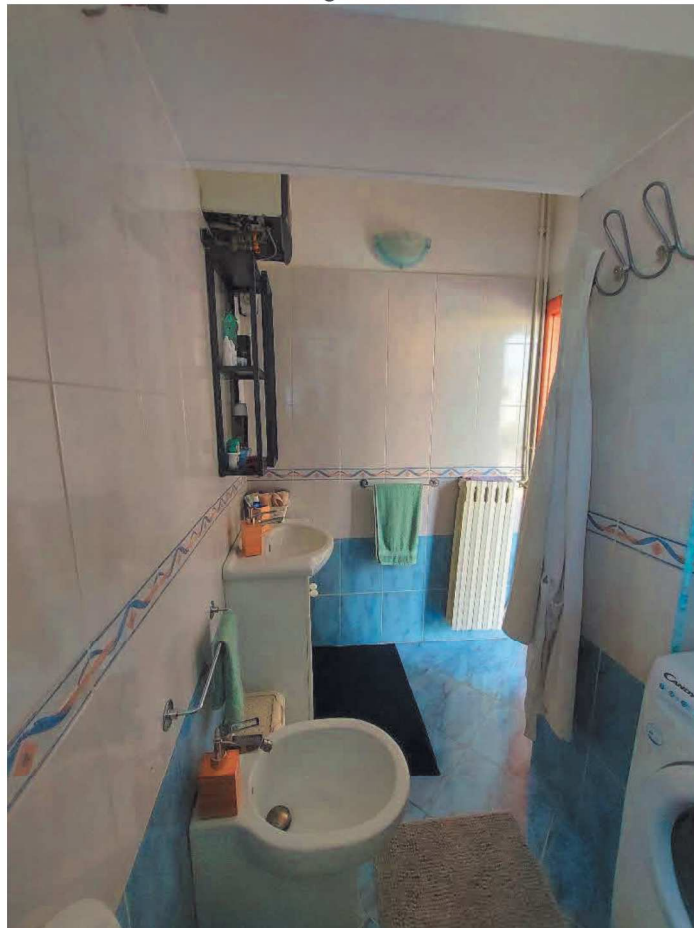
Camera L1



Camera L1



Bagno WC



Bagno WC



Soggiorno



Soggiorno



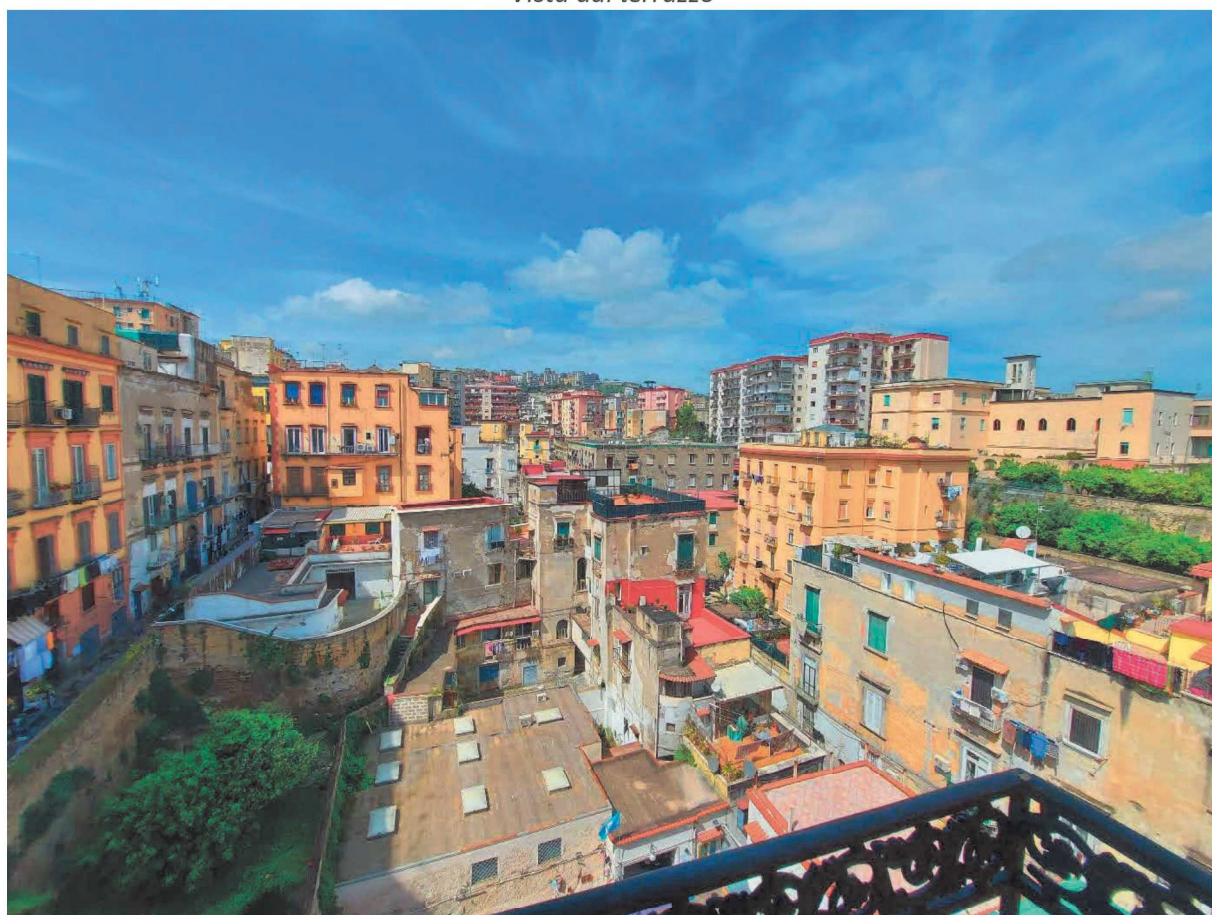
Terrazzo



terrazzo



Vista dal terrazzo



Vista dal Balcone BL prospiciente gradini San Mandato