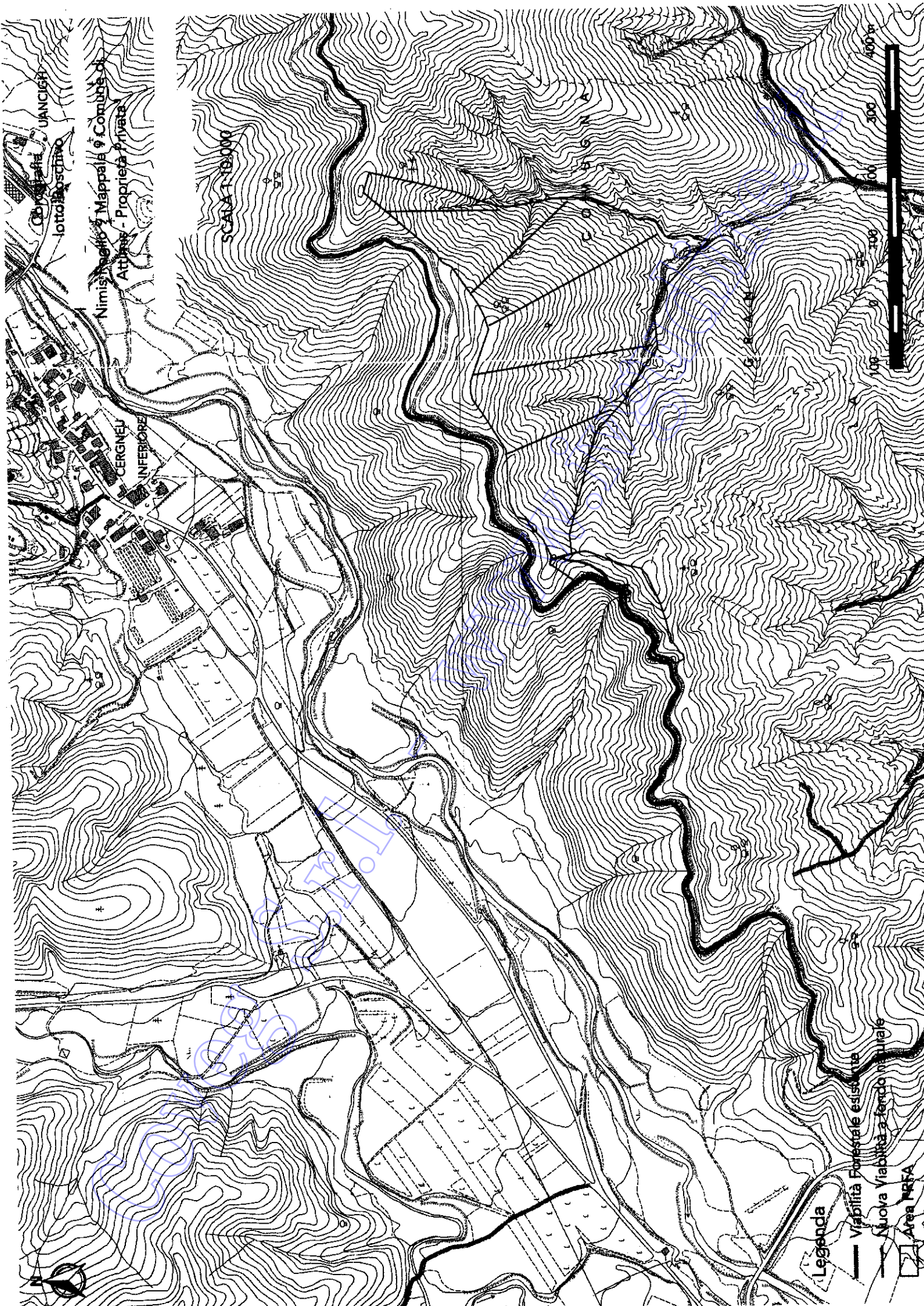


29-Ott-2024 10:25:57  
Protocollo pratica T112455/2024

Scala originale: 1:2000  
Dimensione cornice: 776.000 x 552.000 metri

Comune: (UD) ATTIMIS  
Foglio: 9



SCALA 1:10.000

Nimis, Maffio & Mappala & Compars di  
Attilio - Proprietà Privata

CERGNELLI  
INFERIORE

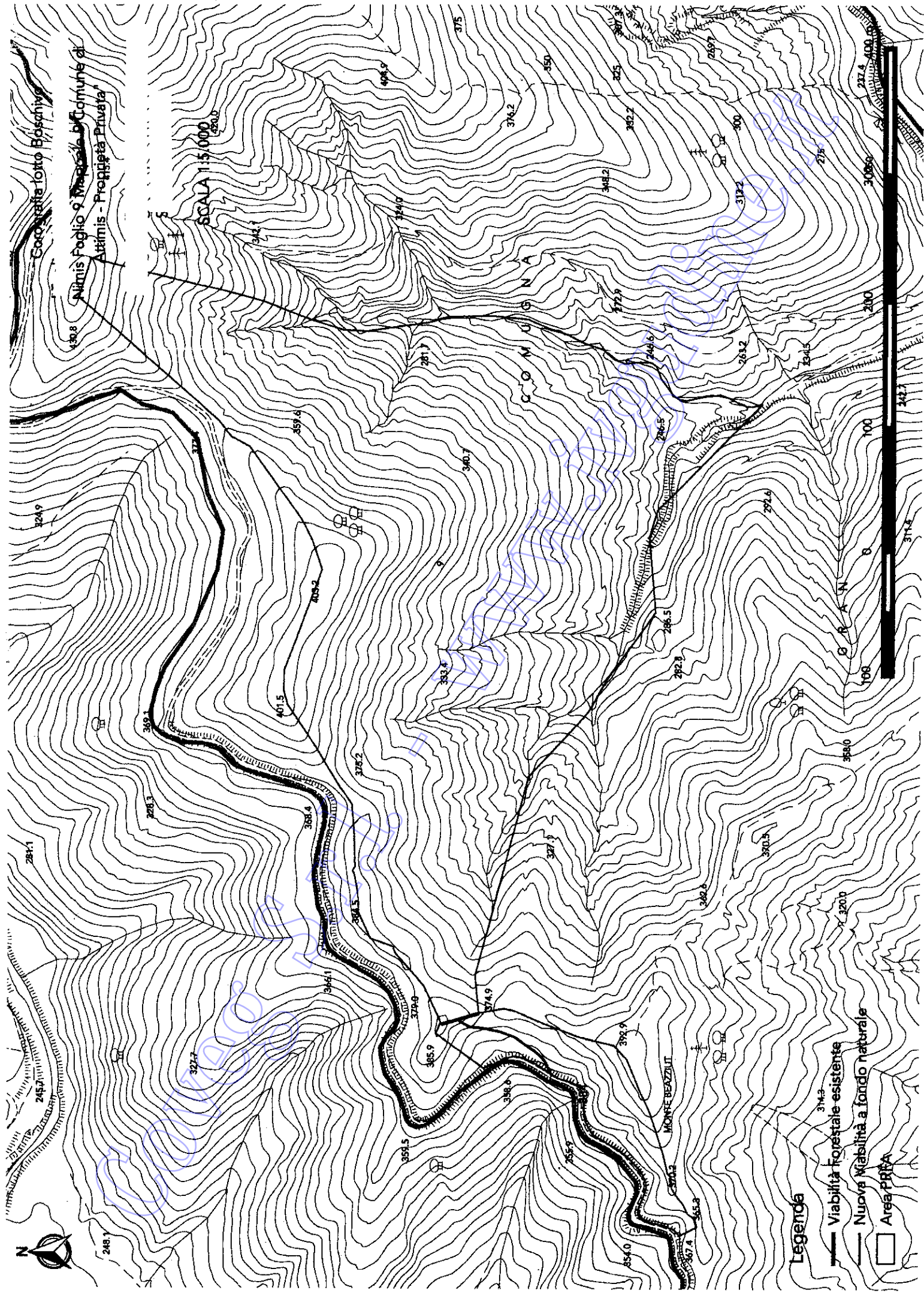
Legenda

Viabilità Forestale esistente

Nuova Viabilità a fondo stradale

Area NABA






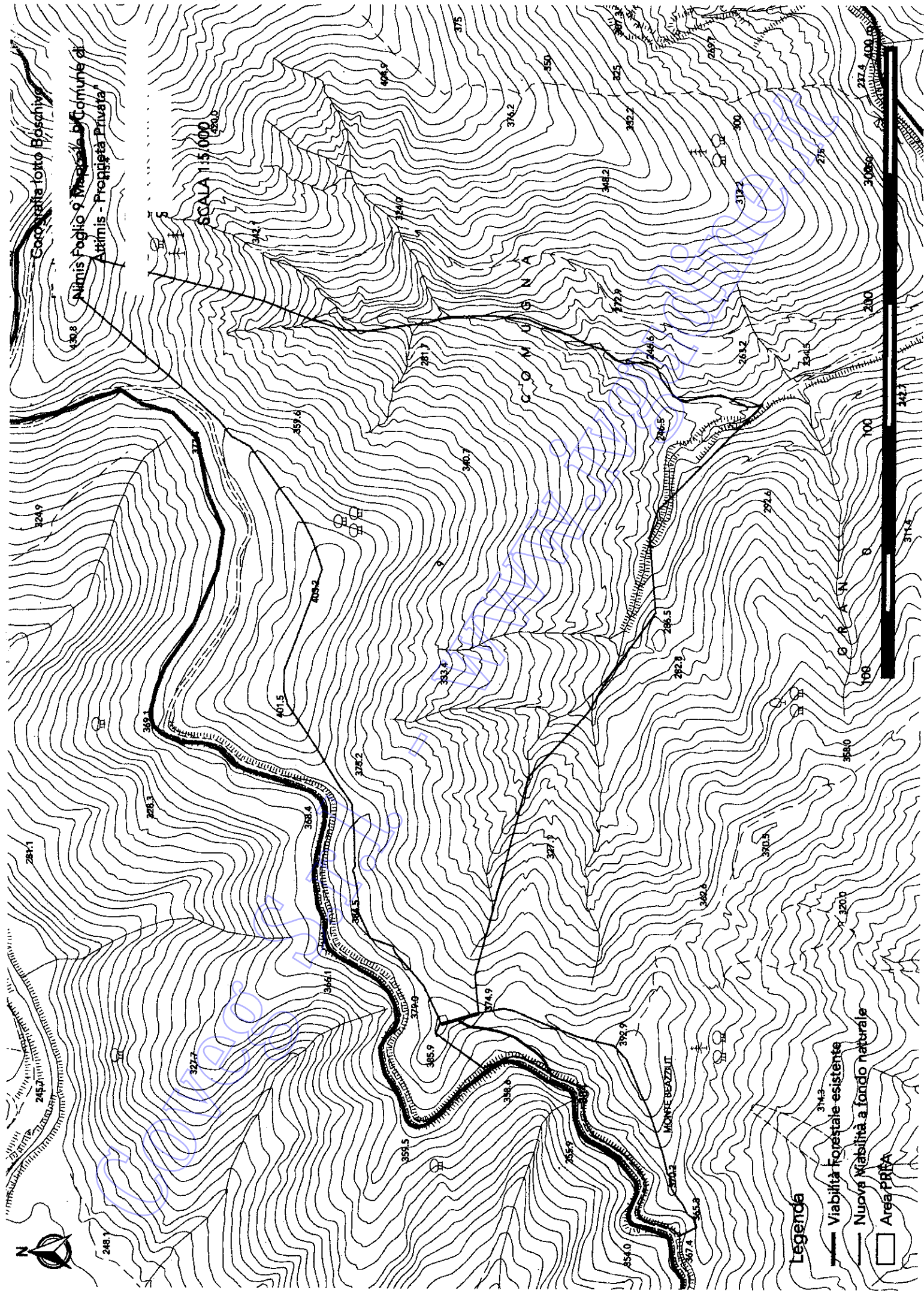


Comune di  
Alimis Foglio 9 ~~Mappa~~ di Comune di  
Alimis - Proprietà Privata

SCALA 1:15.000

**Legenda**

-  Viabilità forestale esistente
-  Nuova Viabilità a fondo naturale
-  Area PRPA



LOTTO 2°



CoverS.I. s.p.a. [www.cover.it](http://www.cover.it)