

**ALLEGATO 1**

RILIEVO FOTOGRAFICO (09.10.2025)

LOTTO 1 – Porzione di villa bifamiliare con box in  
VIA CESARE LOMBROSO n. 8 – PADERNO DUGNANO (MI)

INQUADRAMENTO AEROFOTOGRAMMETRICO (Comune di Paderno Dugnano)



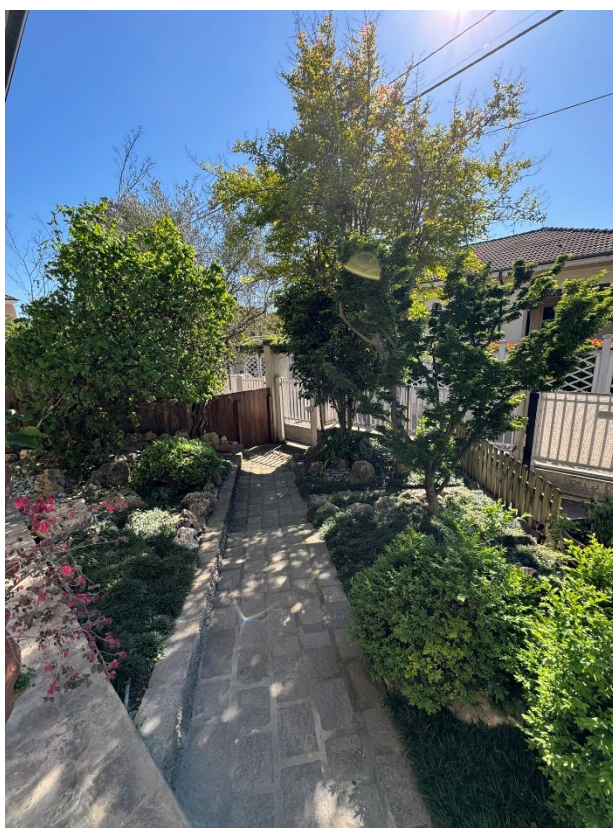
VILLA BIFAMILIARE



VILLA BIFAMILIARE (fronte Via Cesare Lombroso)



GIARDINO



ESTERNI



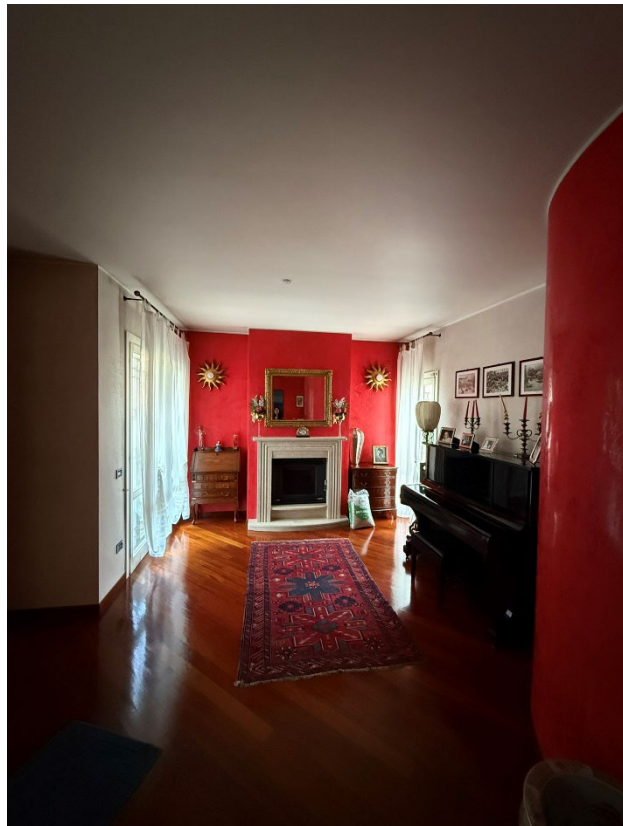
PENSILINA



VERANDA COPERTA



PT - SOGGIORNO



PT - SALA DA PRANZO



PT - CUCINA



PT - BAGNO



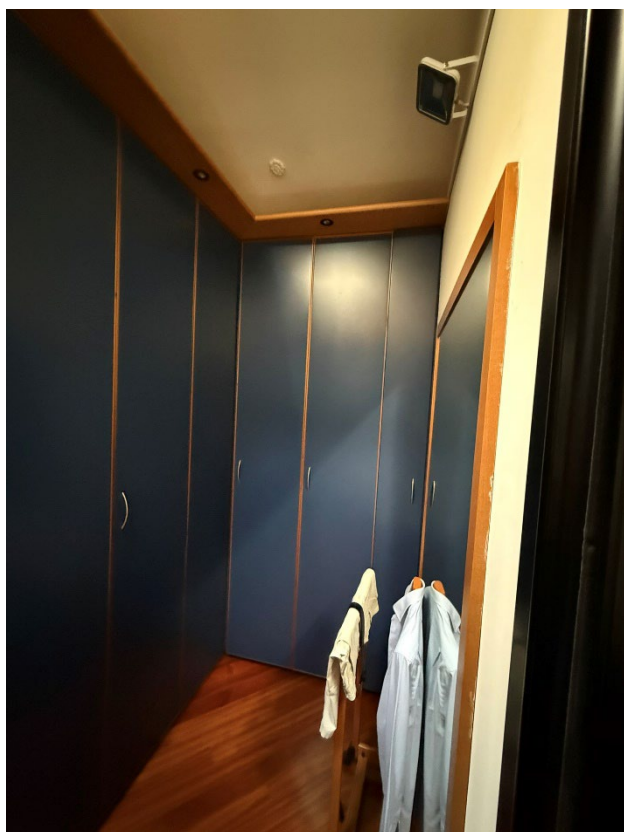
P1 - CAMERA



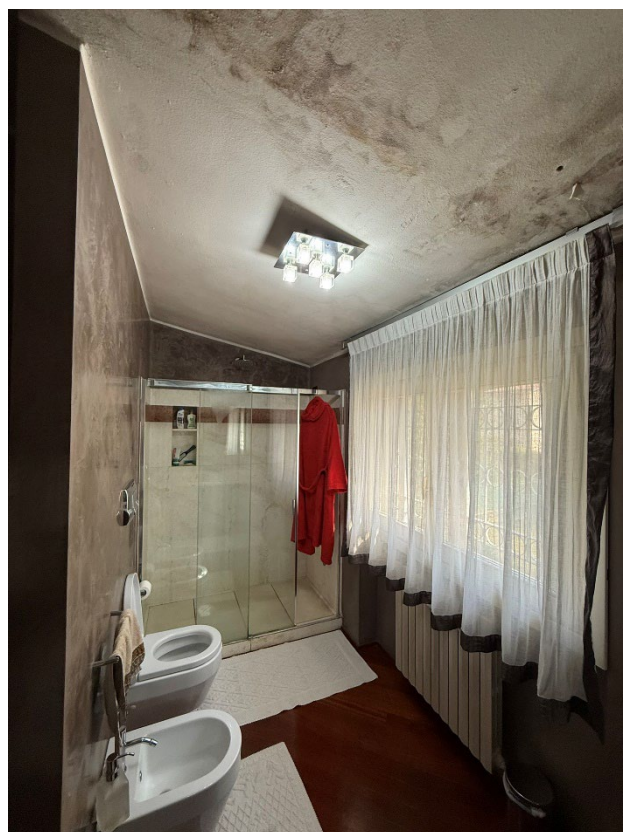
P1 - BALCONE



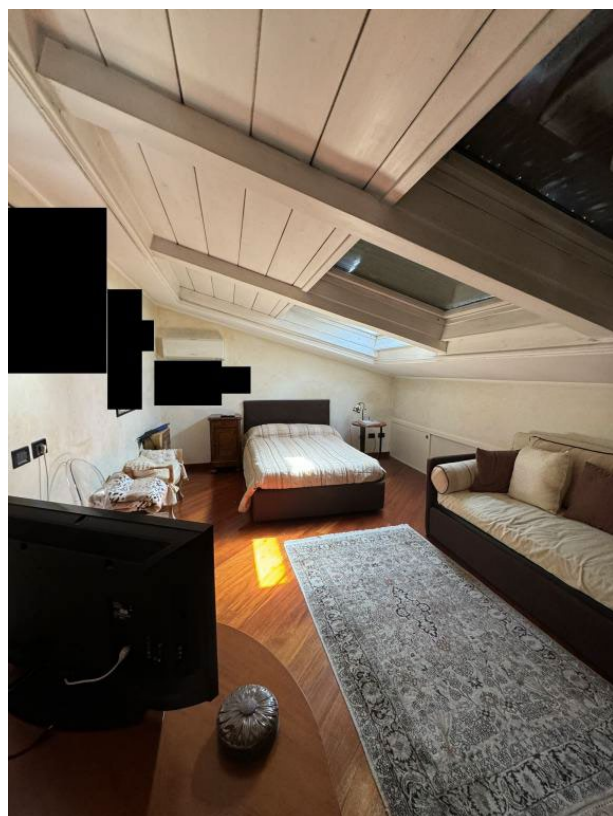
P1 – CABINA ARMADIO



P1 - BAGNO



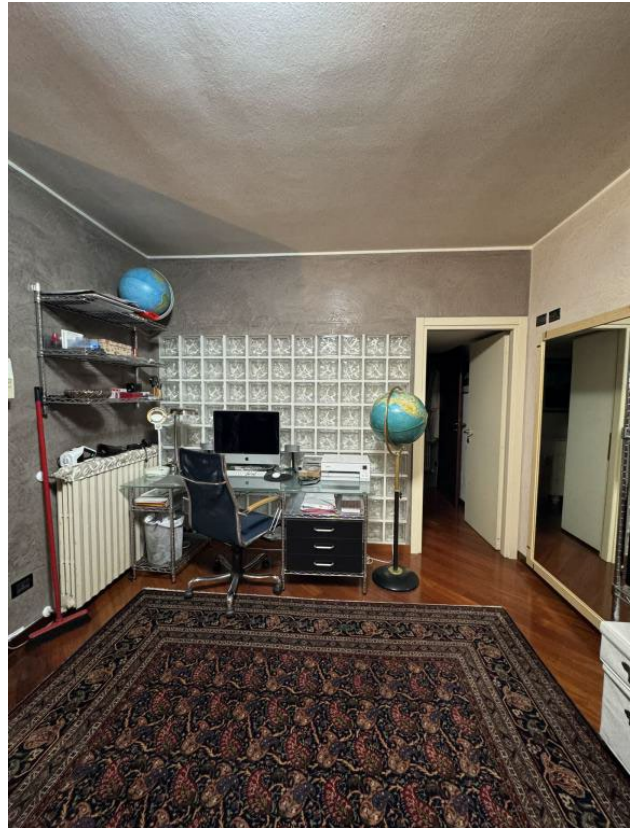
P1 - CAMERA



P1 - BAGNO



S1 - SALA



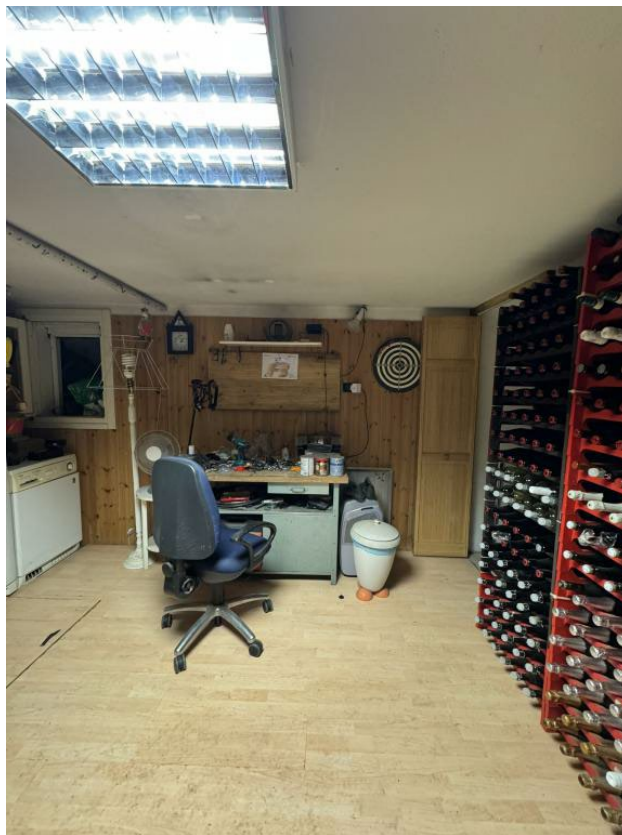
S1 - LAVANDERIA



S1 - CAMERA



CANTINA



BOX (subalerno 2)

