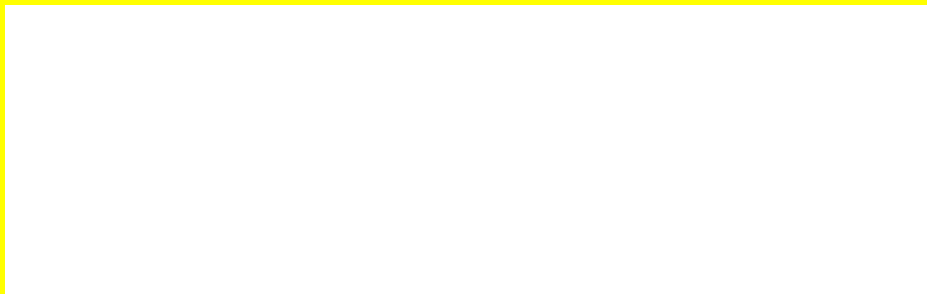


TRIBUNALE DI GENOVA

Procedimento Esecutivo R.Es. n° 403/2021 promosso da:



ALLEGATO

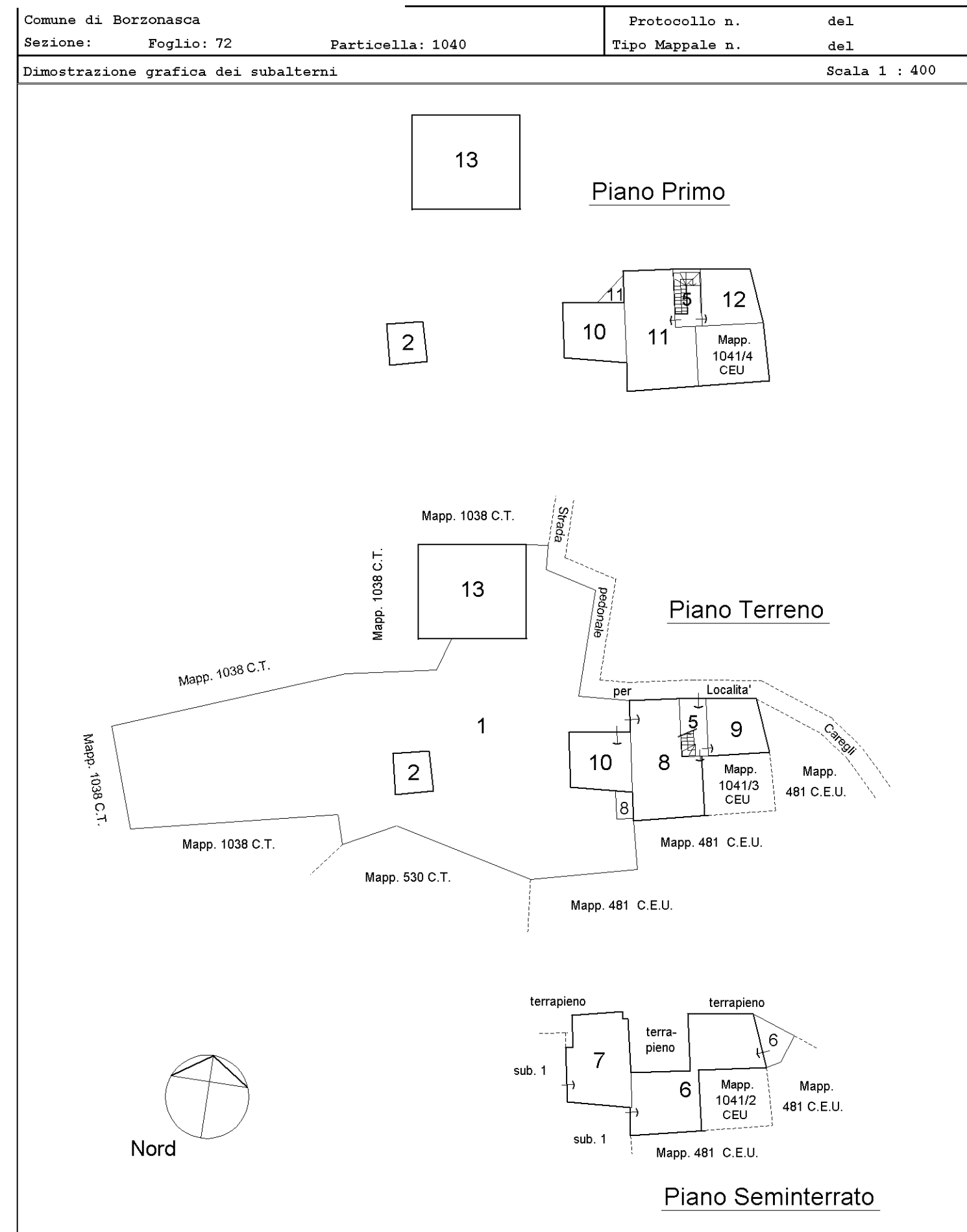
"9"

GRAFICI STATO ATTUALE

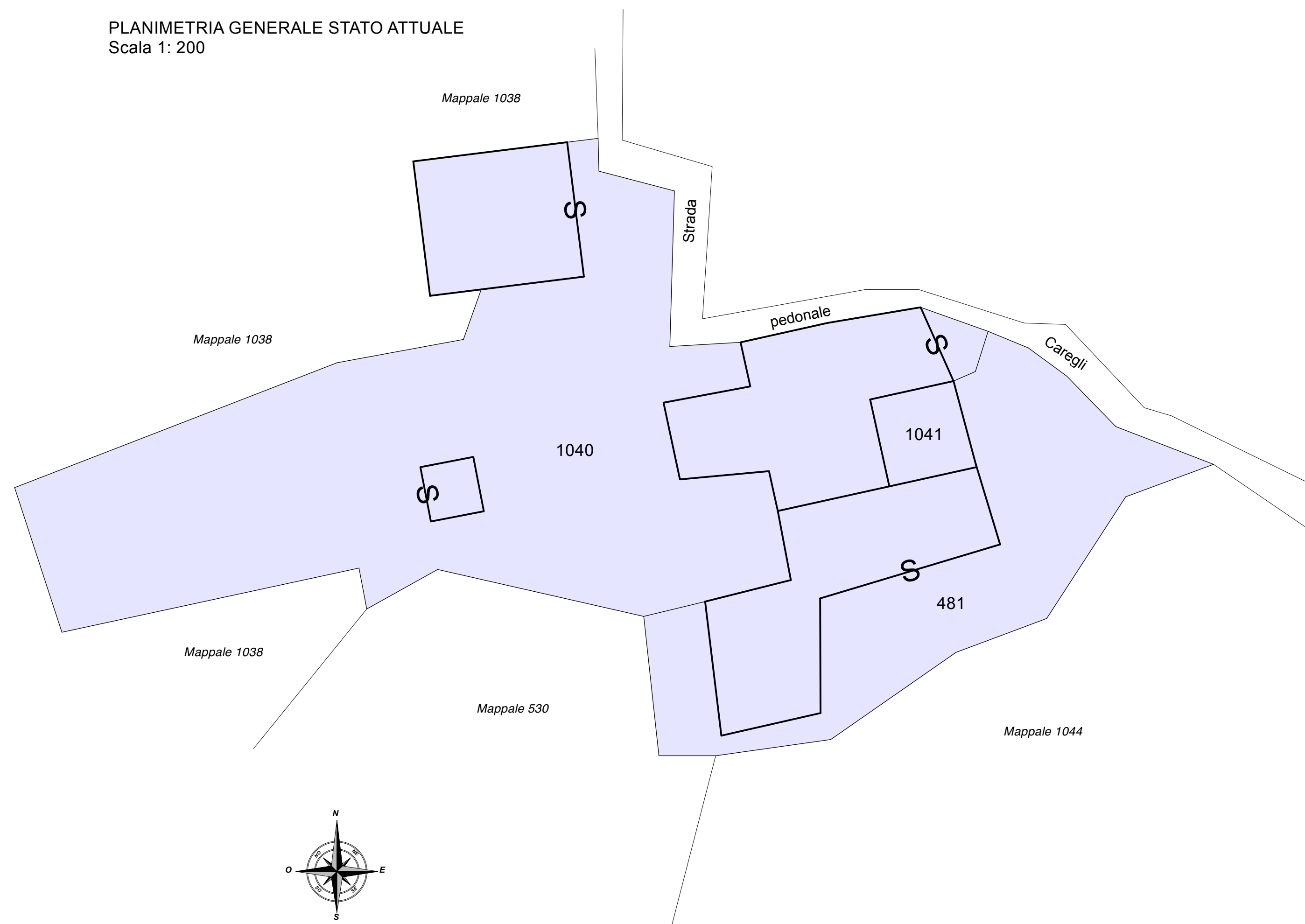
A circular professional seal of the Collegio Provinciale Geometri of Genoa, with the name Riccardo Pigna written over it in a cursive signature.

Geom. Riccardo Pigna - Via Nino Bixio 22/D int. 12 - 16043 CHIAVARI (GE)
Tel. e Fax 0185/321759 - E-mail pignar@libero.it - Pec riccardo.pigna@geopec.it

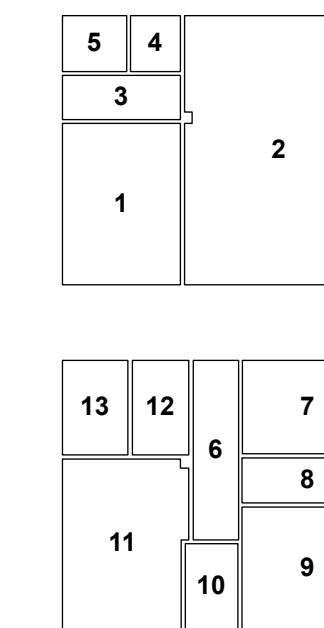
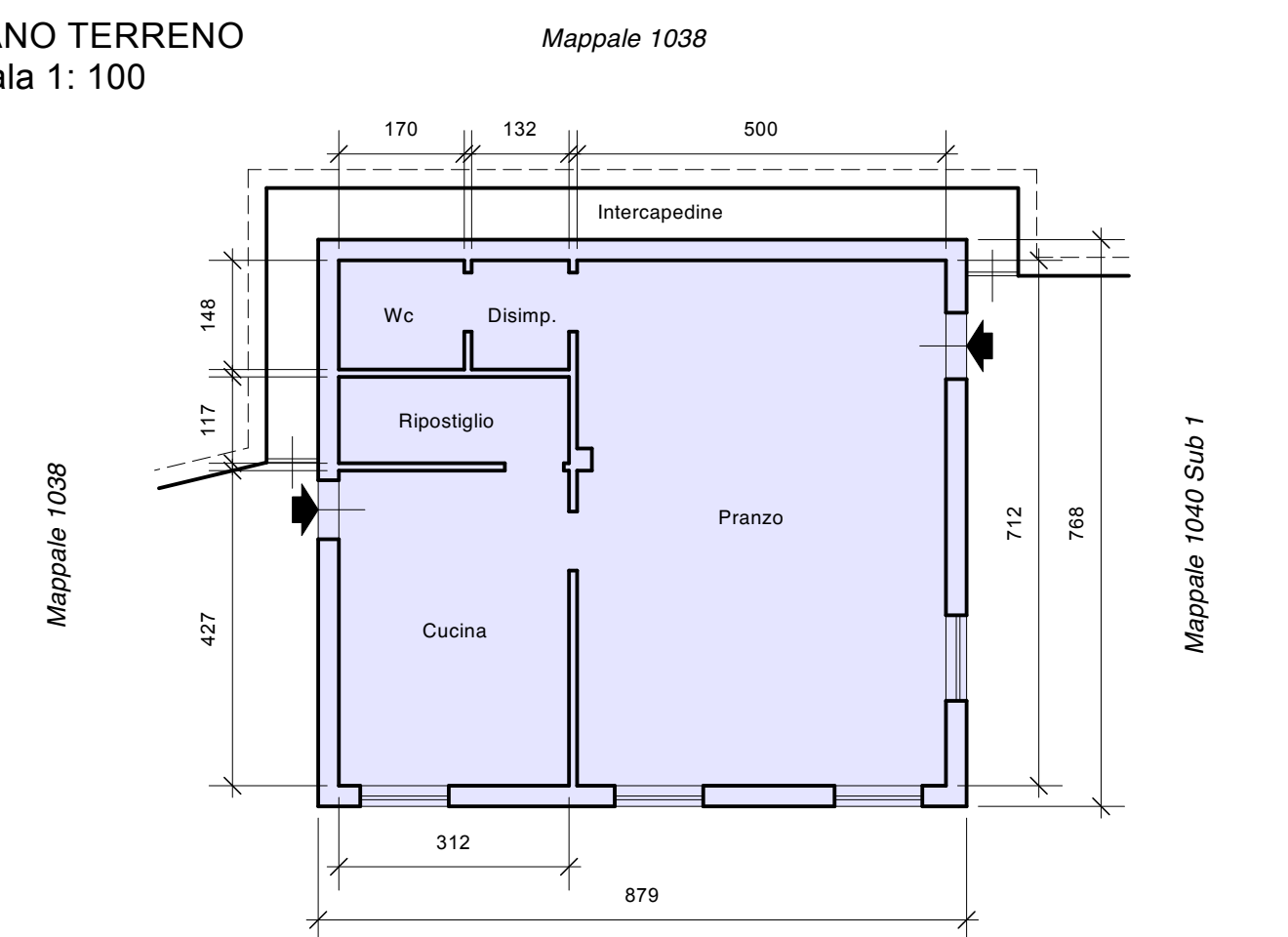




PLANIMETRIA GENERALE STATO ATTUALE
Scala 1: 200



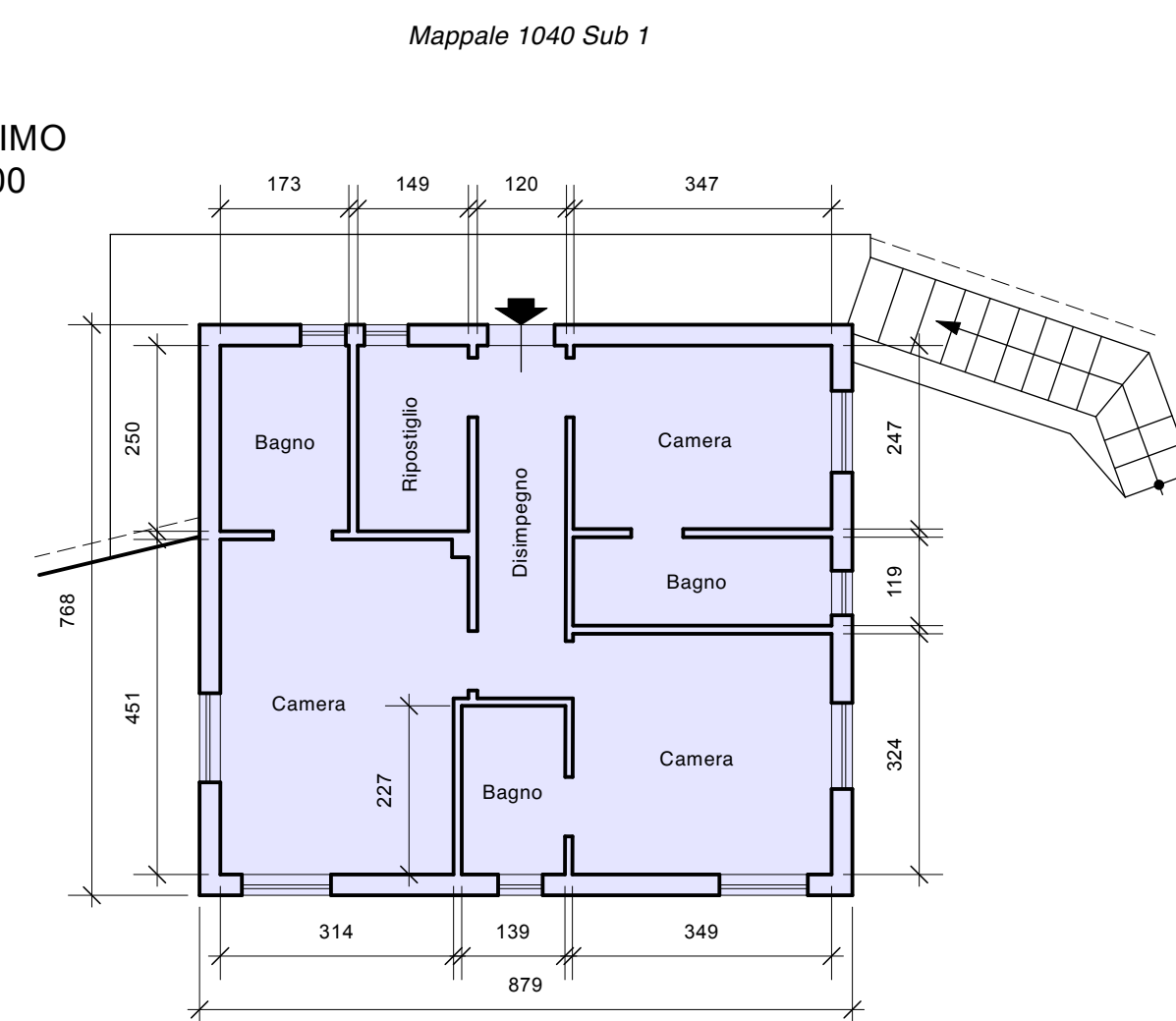
PIANO TERRENO
Scala 1: 100



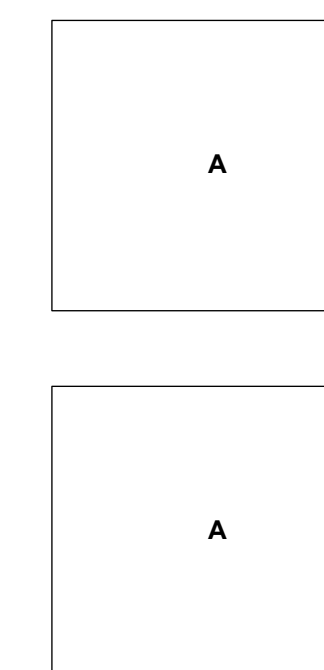
SUPERFICI UTILI NETTE

1 = Cucina	= mq.	13,30
2 = Pranzo	= mq.	35,55
3 = Ripostiglio	= mq.	3,65
4 = Disimpiegno	= mq.	1,95
5 = Wc	= mq.	2,50
6 = Disimpiegno	= mq.	5,70
7 = Camera	= mq.	8,55
8 = Bagno	= mq.	4,15
9 = Camera	= mq.	11,30
10 = Bagno	= mq.	3,15
11 = Camera	= mq.	14,55
12 = Ripostiglio	= mq.	3,75
13 = Bagno	= mq.	4,35
TOTALE	= mq.	112,45

PIANO PRIMO
Scala 1: 100



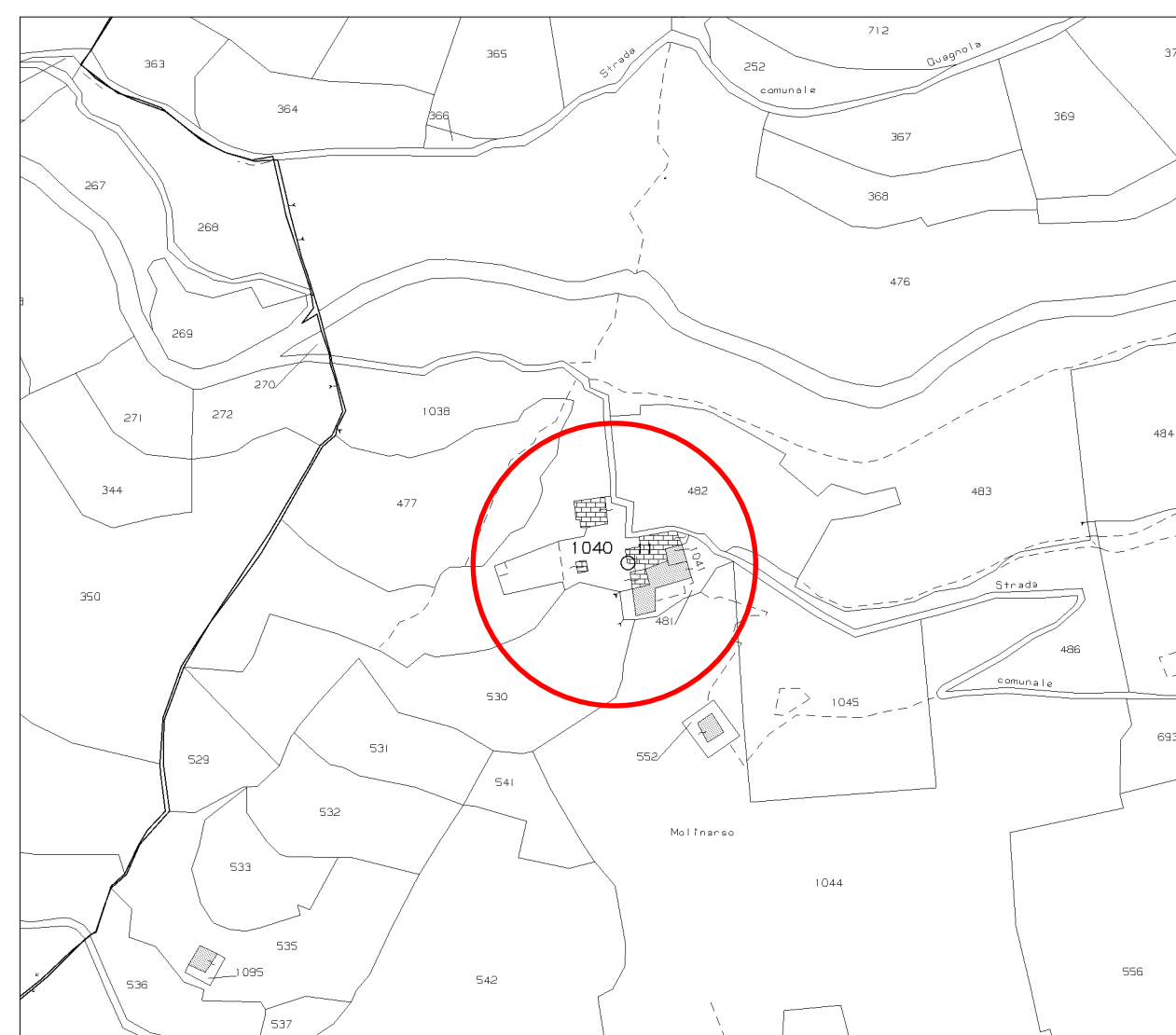
SCHEMA CALCOLO SUPERFICI UTILI NETTE E LORDE
Scala 1:200



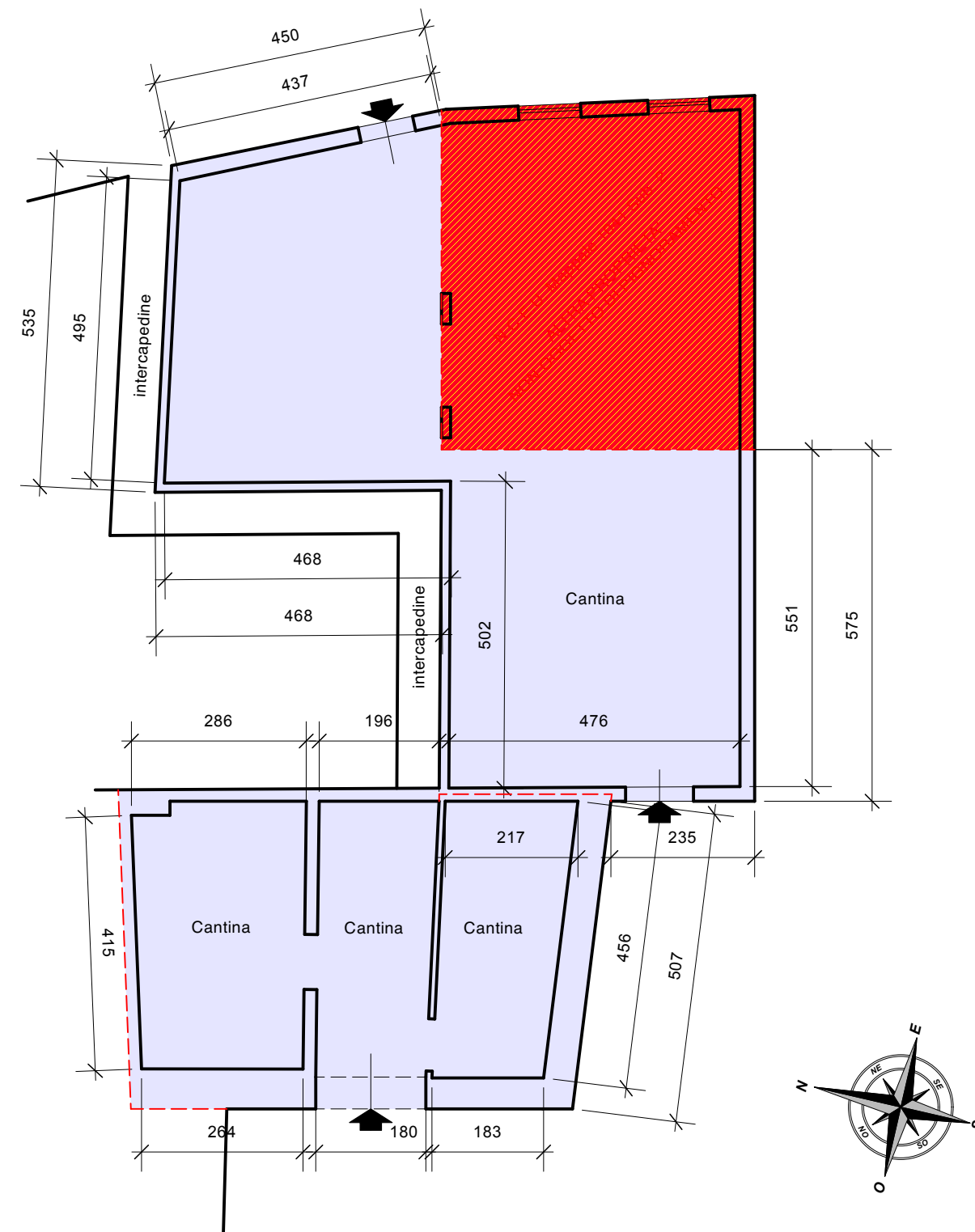
SUPERFICI LORDE

A = Appartamento	= mq.	67,50
A = Appartamento	= mq.	67,50
TOTALE	= mq.	135,00

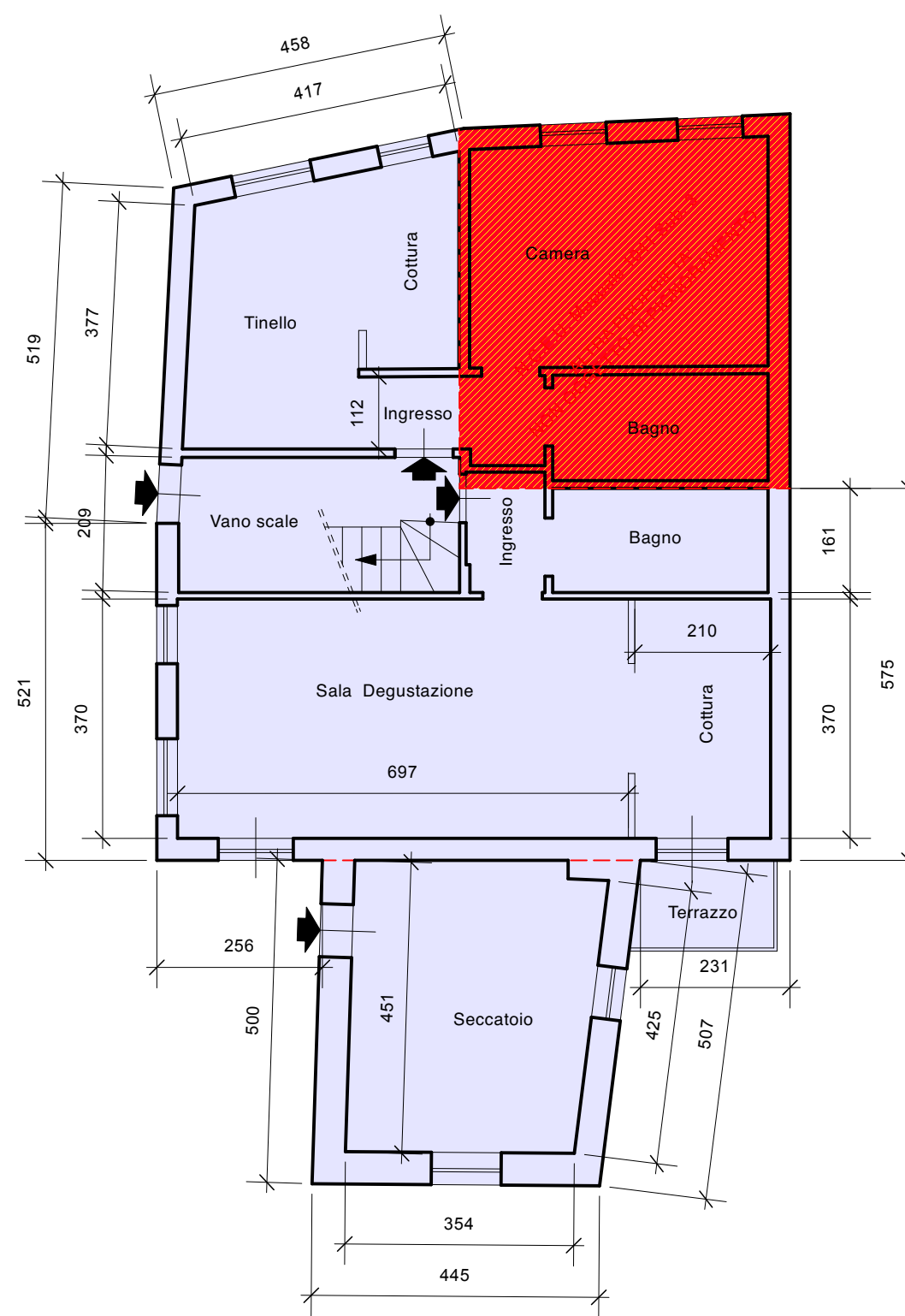
COMUNE DI BORZONASCA (GE)
IMMOBILE LOCALITA' MOLINARSO 43C
NCEU Foglio 72 Mappale 1040 Sub. 5-8-9-11-12
PIANO 1S - T - 1



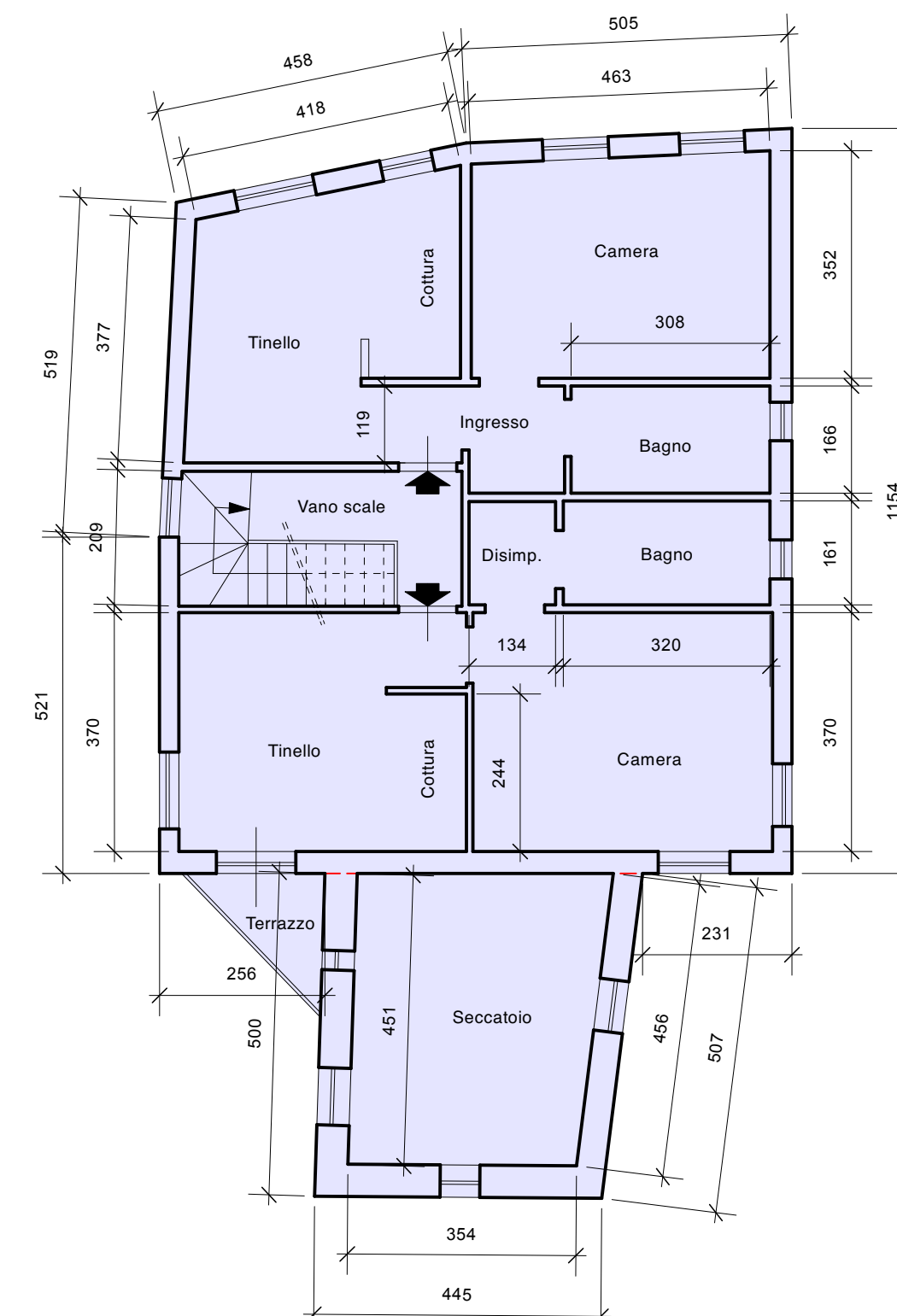
PIANO SEMINTERRATO
Scala 1: 100



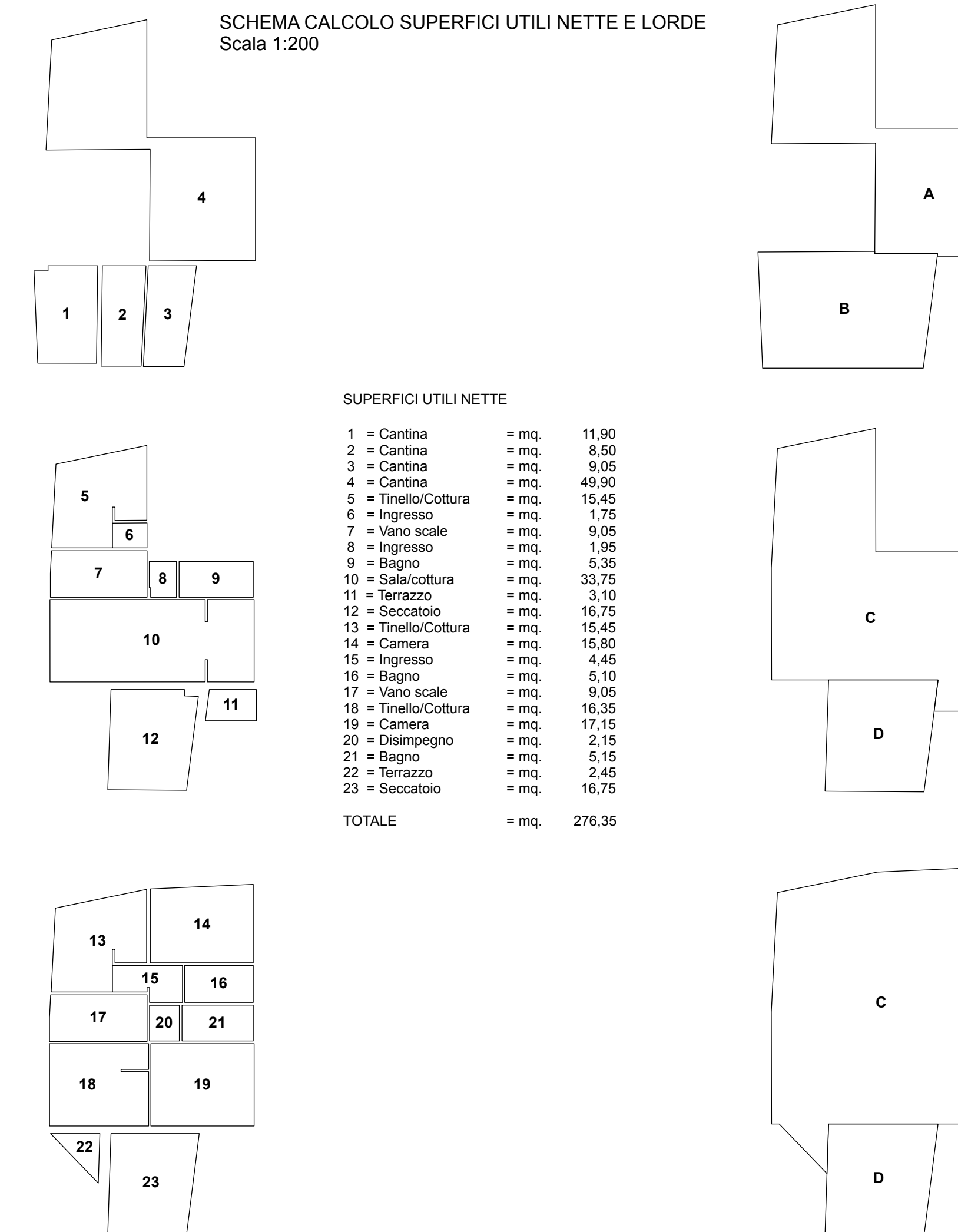
PIANO TERRENO
Scala 1: 100



PIANO PRIMO
Scala 1: 100



SCHEMA CALCOLO SUPERFICI UTILI NETTE E LORDE
Scala 1:200



SUPERFICI UTILI NETTE

1 = Cantina	= mq.	11,90
2 = Cantina	= mq.	8,50
3 = Cantina	= mq.	9,05
4 = Cantina	= mq.	49,90
5 = Tinello/Cottura	= mq.	15,45
6 = Ingresso	= mq.	1,75
7 = Vano scale	= mq.	9,05
8 = Ingresso	= mq.	1,95
9 = Bagno	= mq.	5,35
10 = Sala/cottura	= mq.	33,75
11 = Terrazzo	= mq.	3,10
12 = Seccatoio	= mq.	16,75
13 = Tinello/Cottura	= mq.	15,45
14 = Camera	= mq.	15,80
15 = Ingresso	= mq.	4,45
16 = Bagno	= mq.	5,10
17 = Vano scale	= mq.	9,05
18 = Tinello/Cottura	= mq.	16,35
19 = Camera	= mq.	17,15
20 = Disimpiegno	= mq.	2,15
21 = Bagno	= mq.	5,15
22 = Terrazzo	= mq.	2,45
23 = Seccatoio	= mq.	16,75
TOTALE	= mq.	276,35

SUPERFICI LORDE

A = Cantina	= mq.	55,45
B = Cantina	= mq.	39,80
C = Appartamento	= mq.	193,35
D = Seccatoio	= mq.	47,00
TOTALE	= mq.	335,55