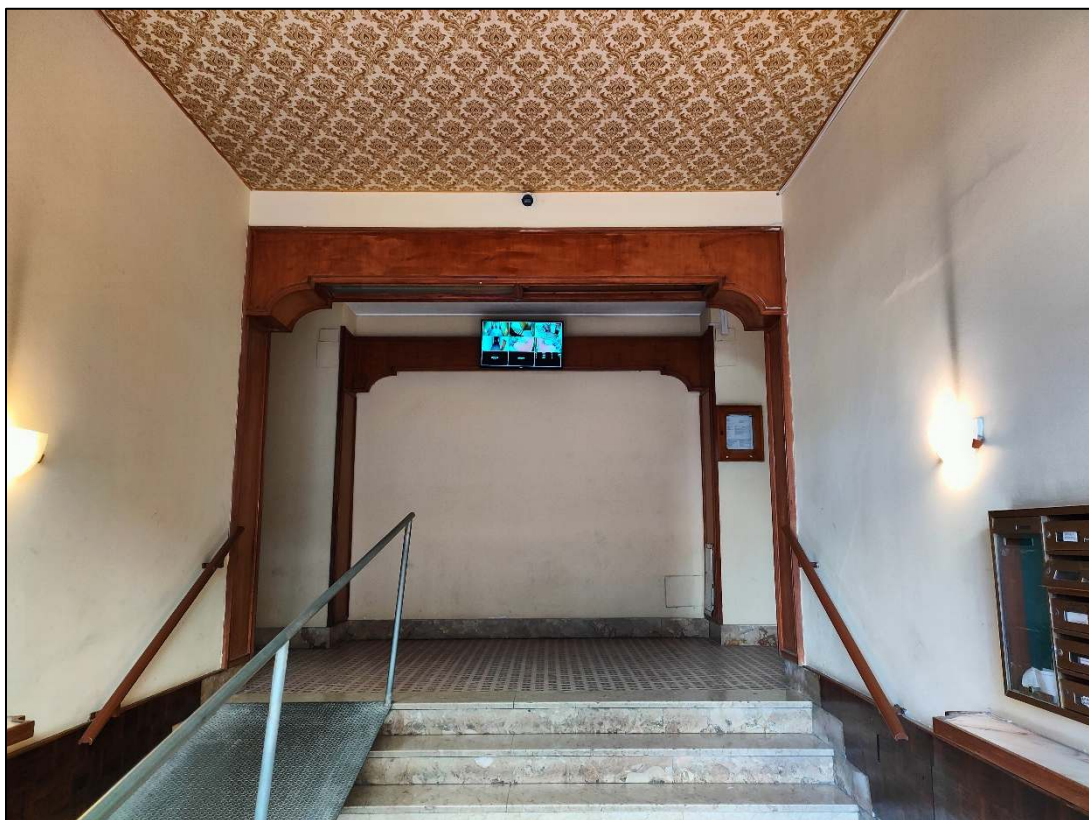




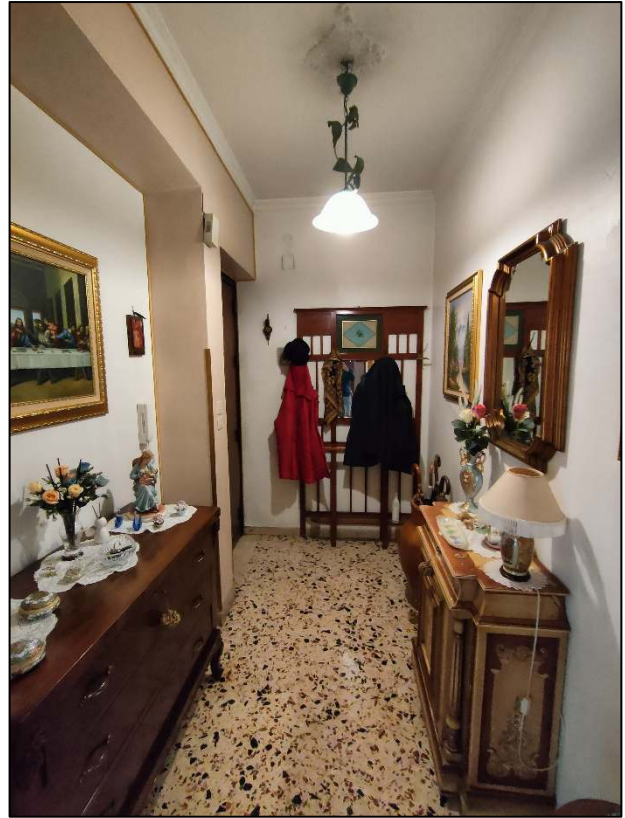
Portone di ingresso dell'edificio



Androne condominiale



Porta di ingresso



Ingresso



Disimpegno



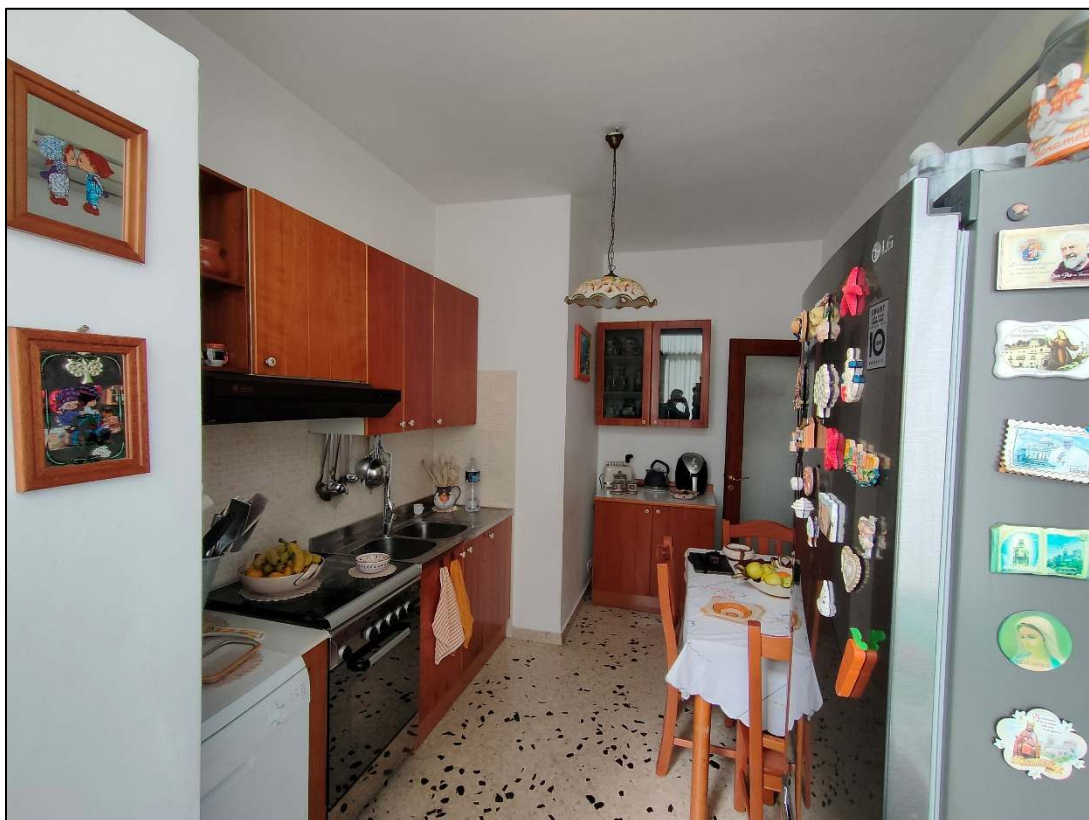
Soggiorno



Soggiorno



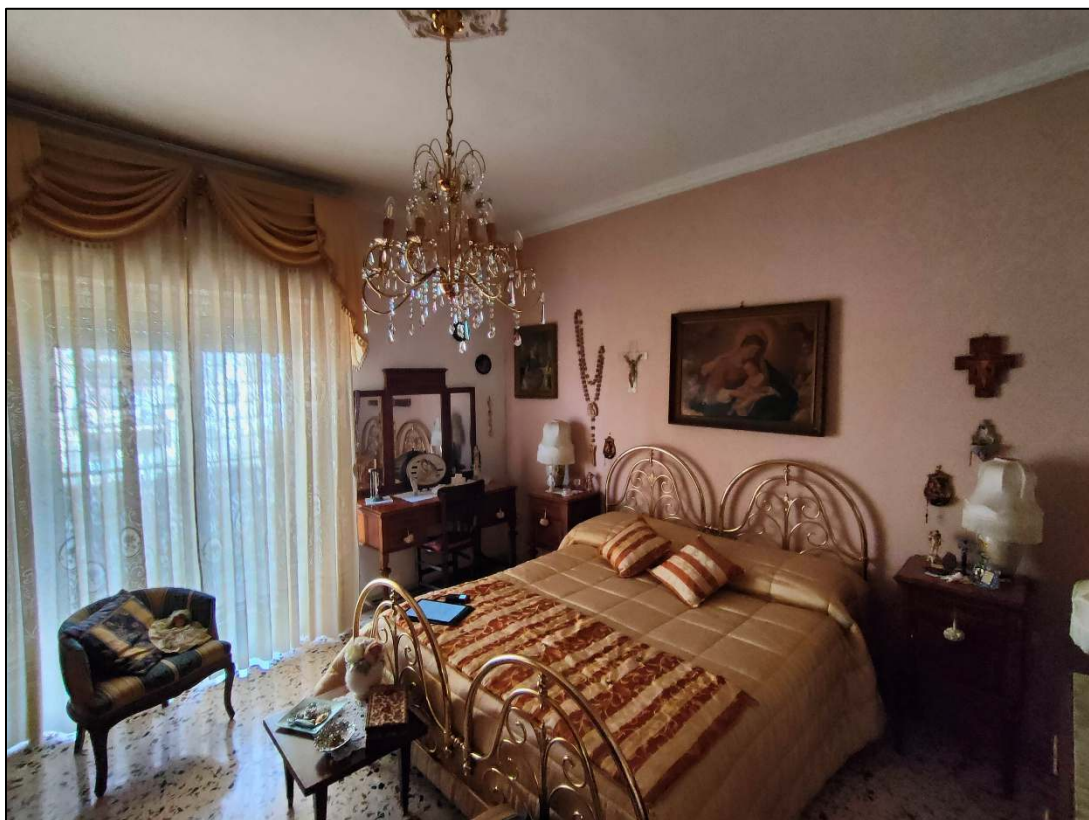
Cucina



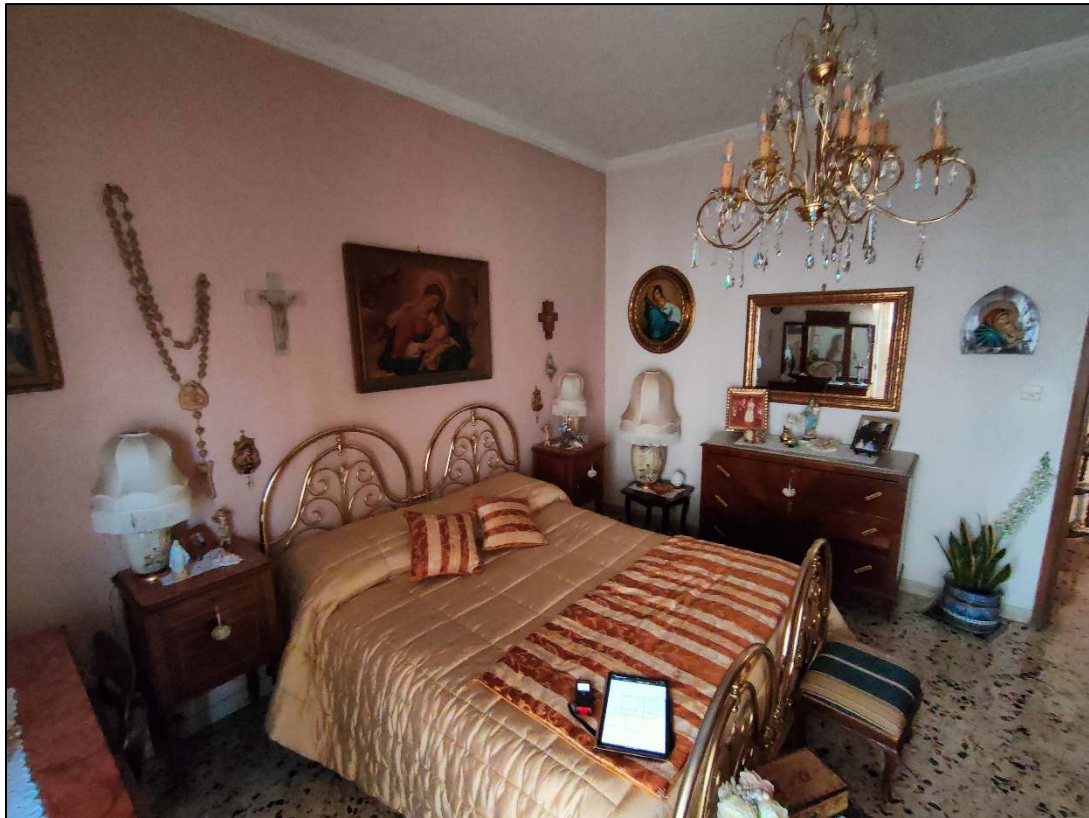
Cucina



Veranda realizzata sul balcone posto in corrispondenza del retrospetto, con rimozione di infisso



Camera da letto principale



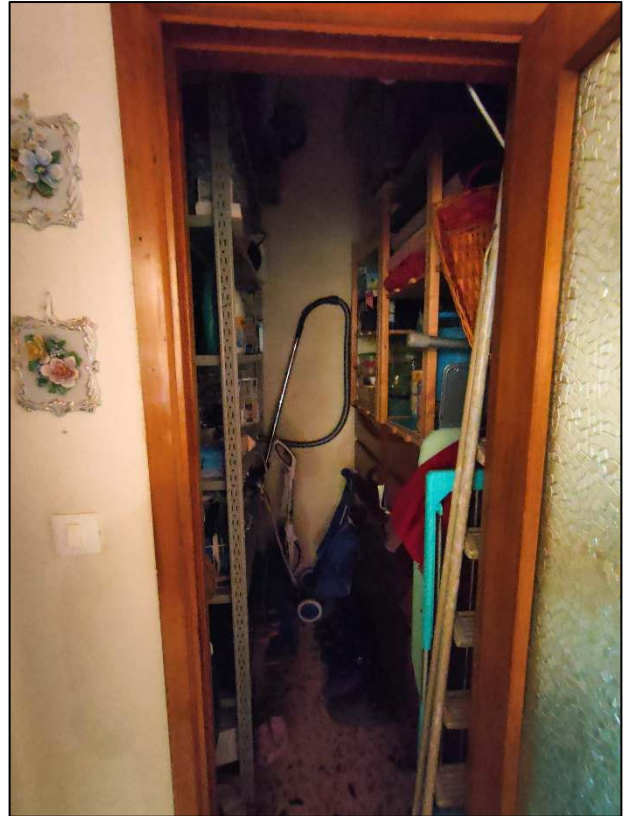
Camera da letto principale



Seconda camera



Servizio igienico



Ripostiglio



Balcone posto su via Armando Diaz