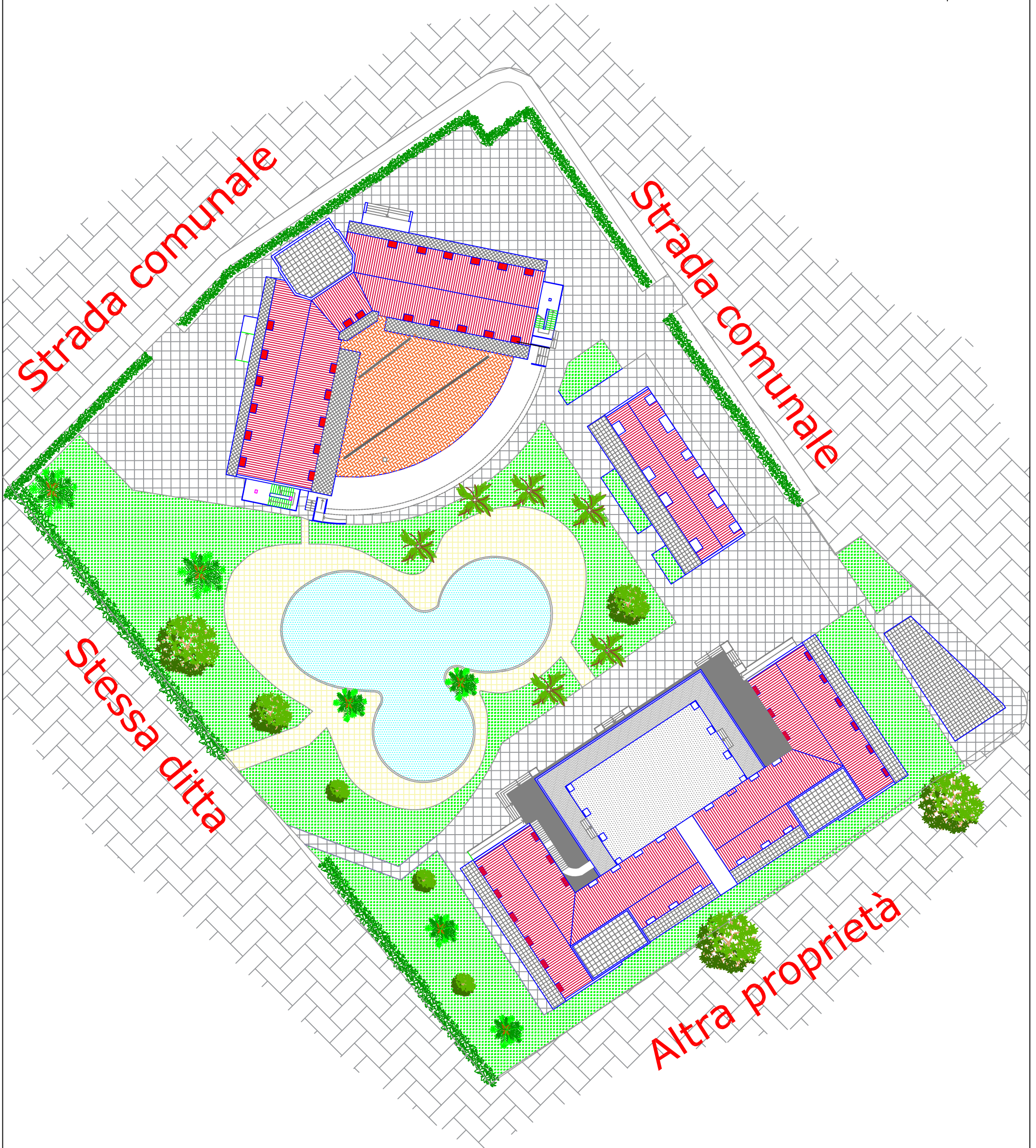
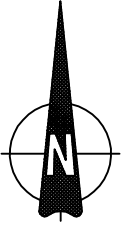


Comune di Nocera Terinese (CZ)
Pianta dei tetti e sistemazione esterna



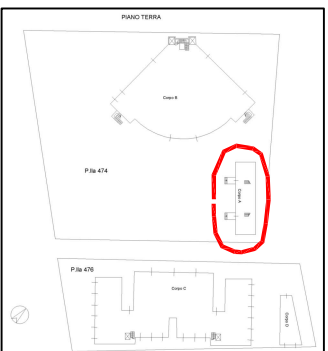
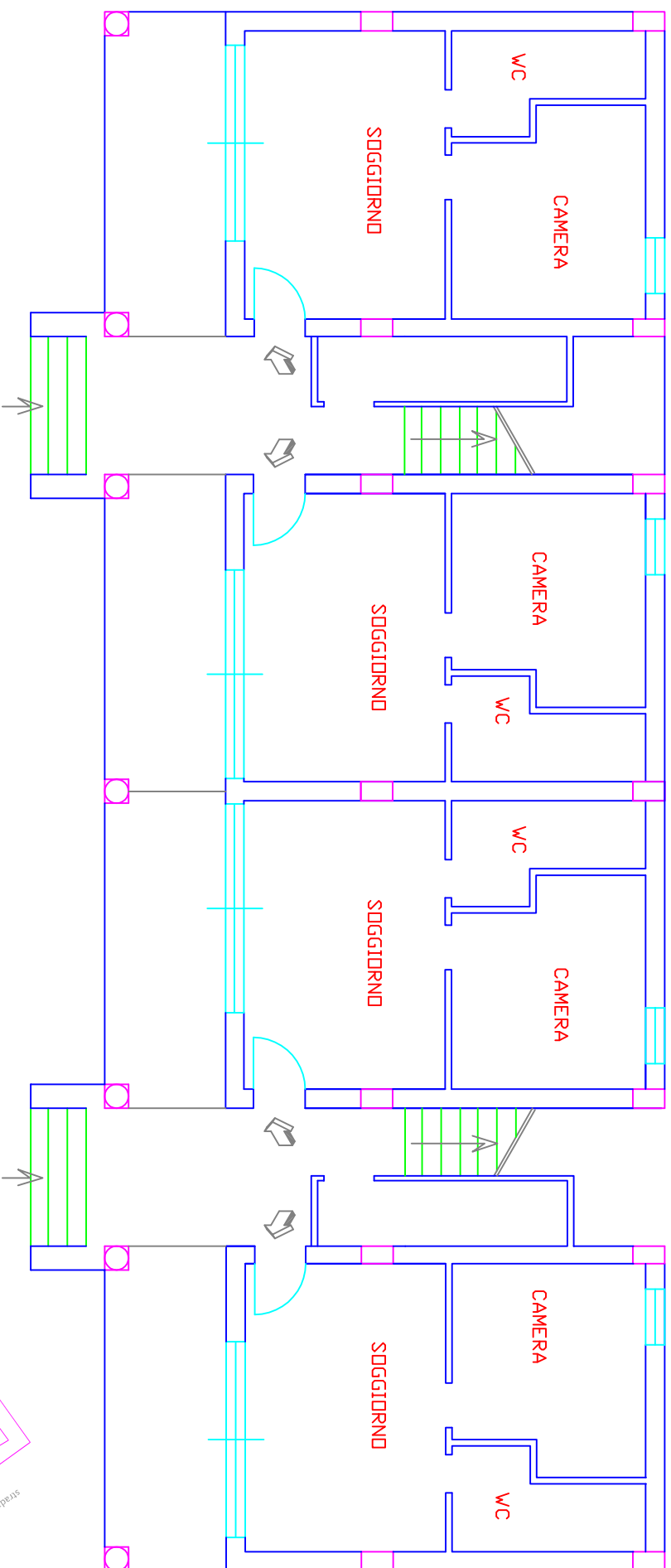
SCALA 1:500

Comune di Nocera Terinese (CZ)

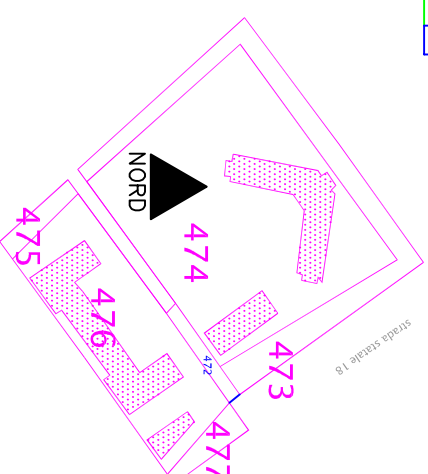
Foglio 32, P.IIa 474

Piano Terra - Corpo A

H = 270 cm



Scala 1:100

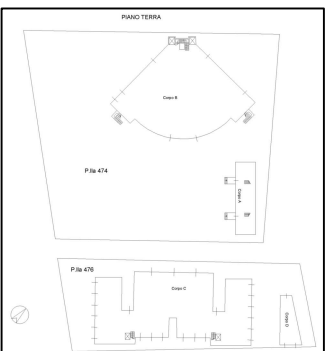
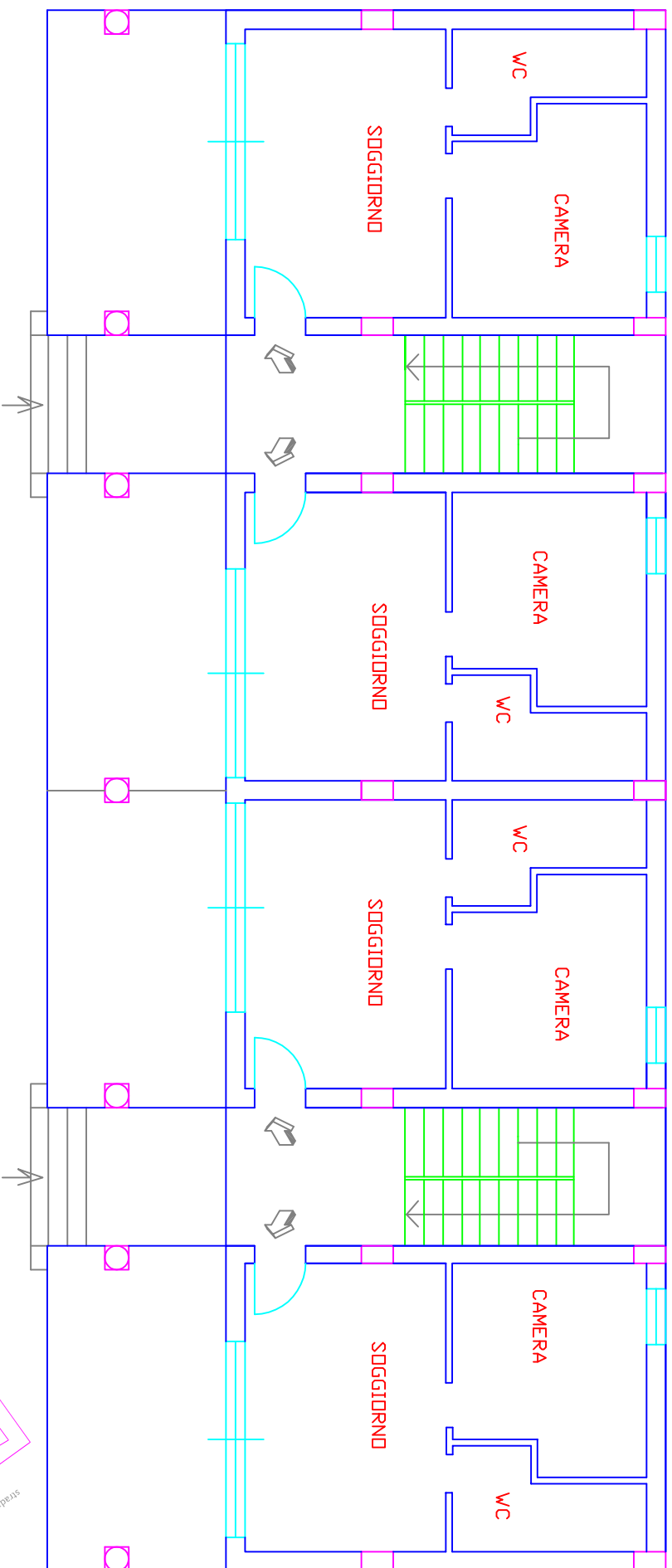


Comune di Nocera Terinese (CZ)

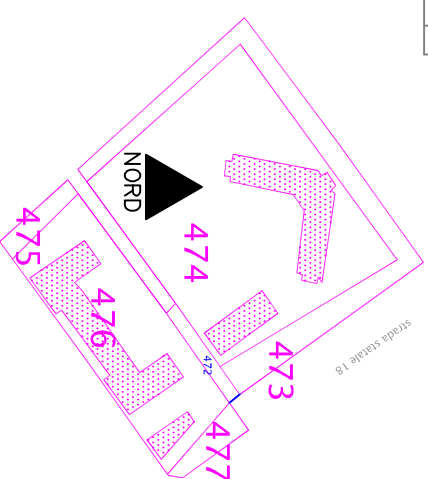
Foglio 32, P.IIa 474

Piano Primo - Corpo A

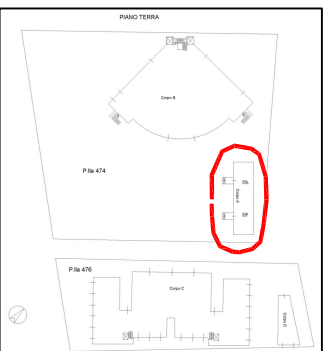
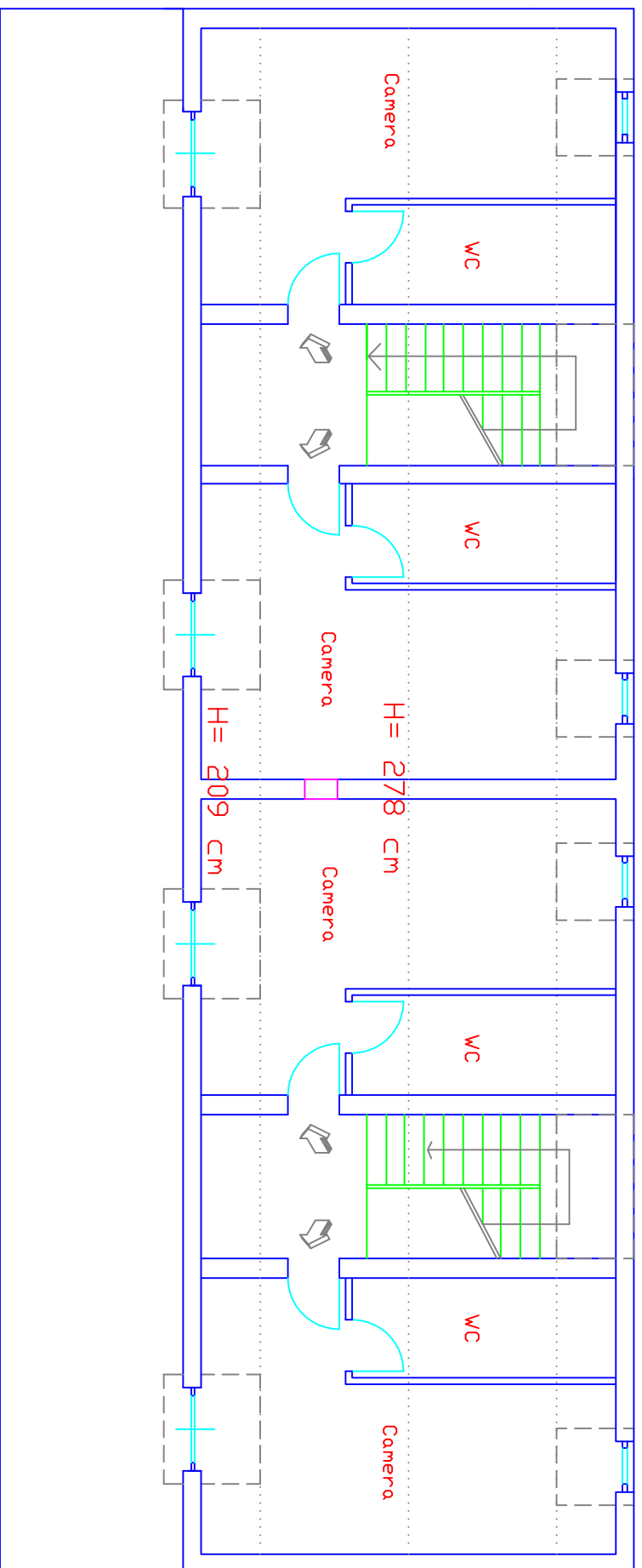
H = 270 cm



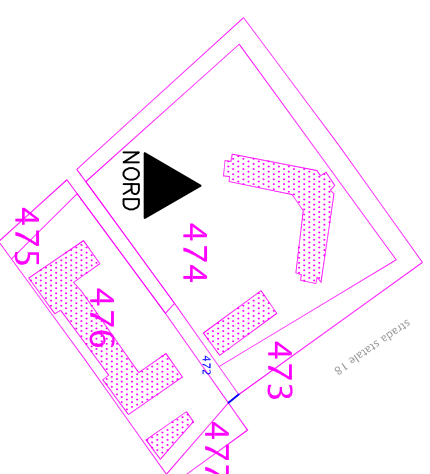
Scala 1:100



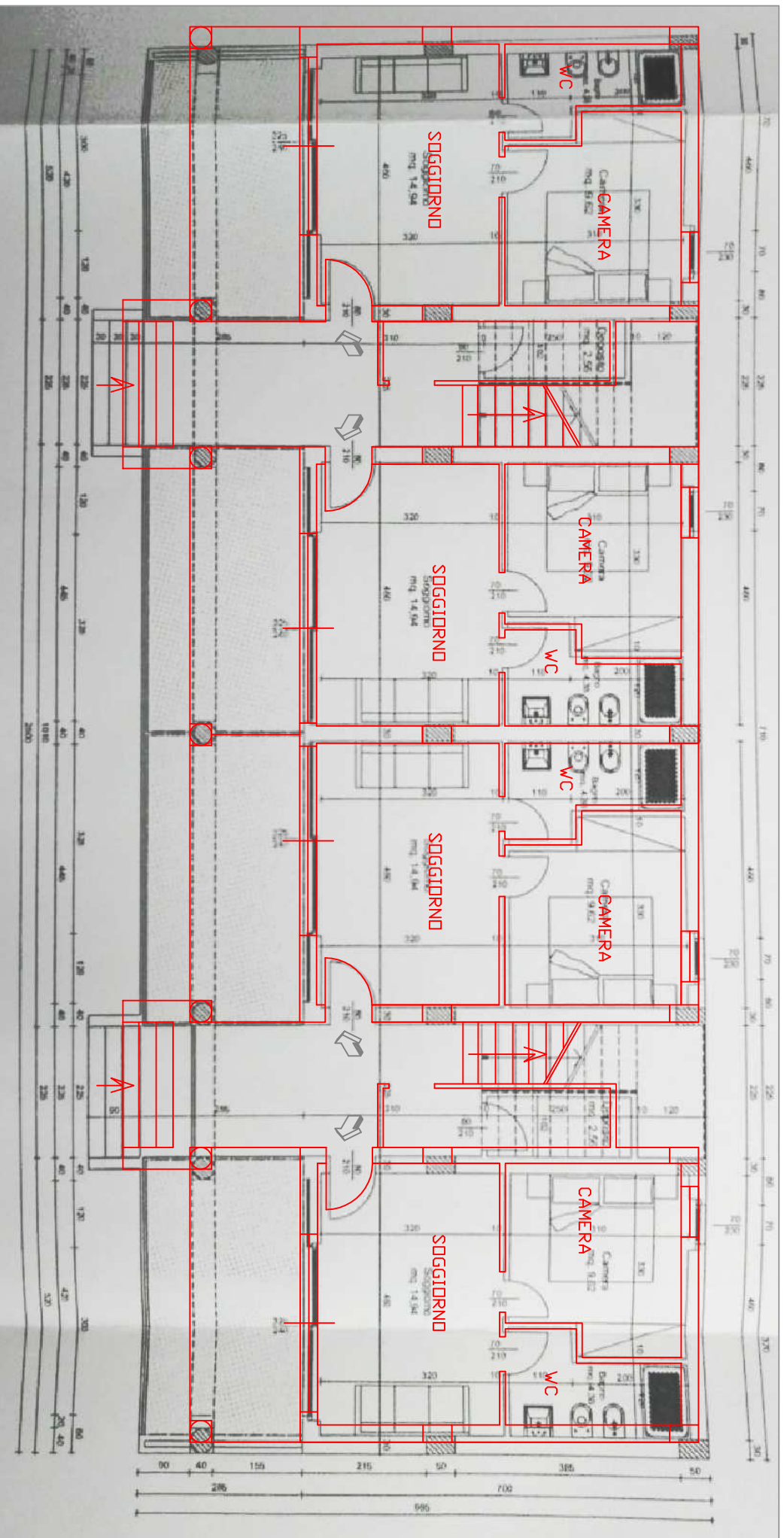
Comune di Nocera Terinese (CZ)
Foglio 32, P.IIa 474
Piano Secondo Sottotetto – Corpo A



Scala 1:100



Comune di Nocera Terinese (CZ)
Foglio 32, P.IIa 474
Sovrapposizione Piano Terra - Corpo A



DIFFORMITA': NESSUNA

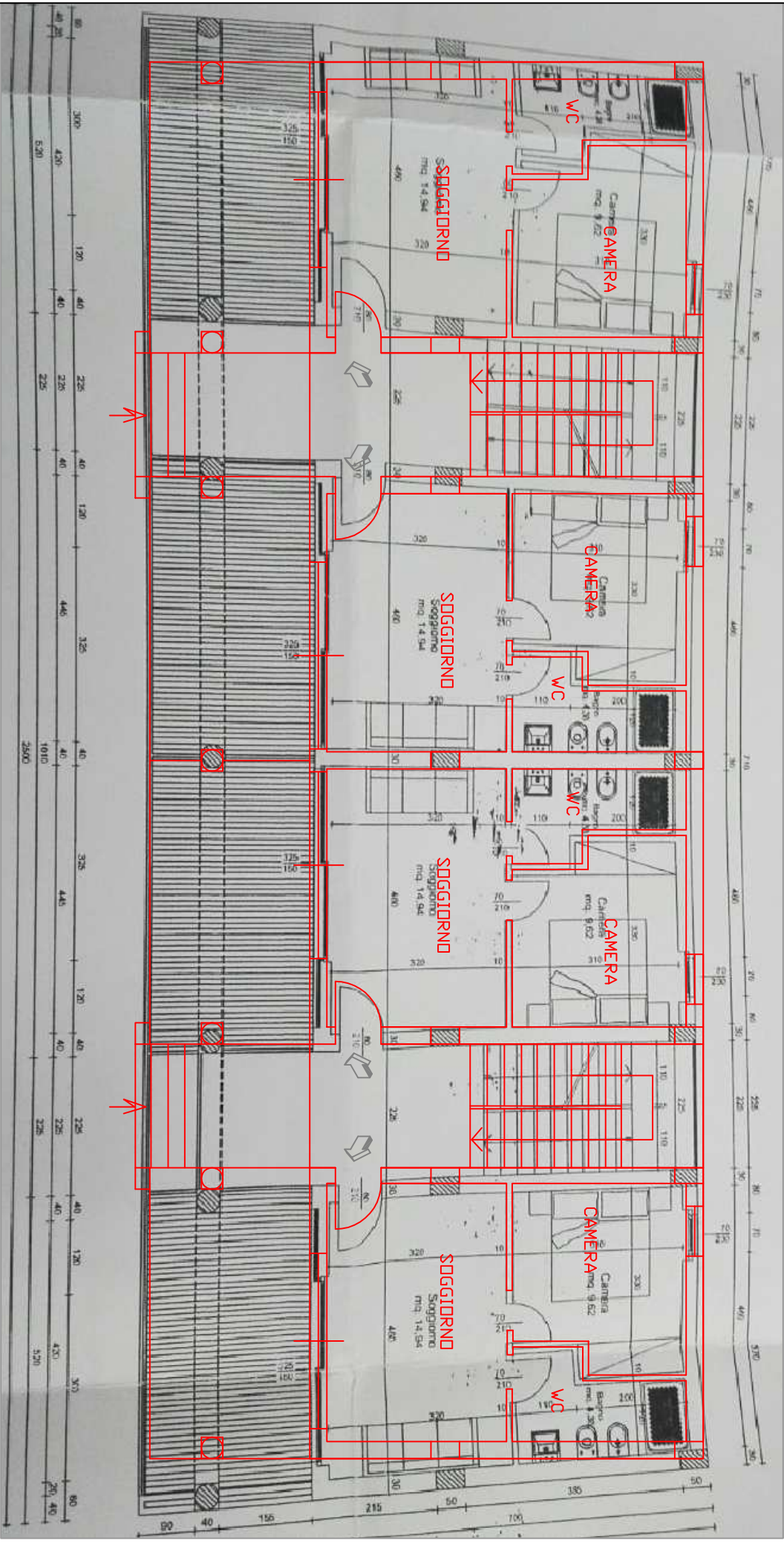
Rilievo

Variante in sanatoria 1523/06 arch. B. Tropea - 11/08/06

Scala 1:100



Comune di Nocera Terinese (CZ)
Foglio 32, P.IIa 474
Sovrapposizione Piano Primo - Corpo A



DIFORMITA': NESSUNA

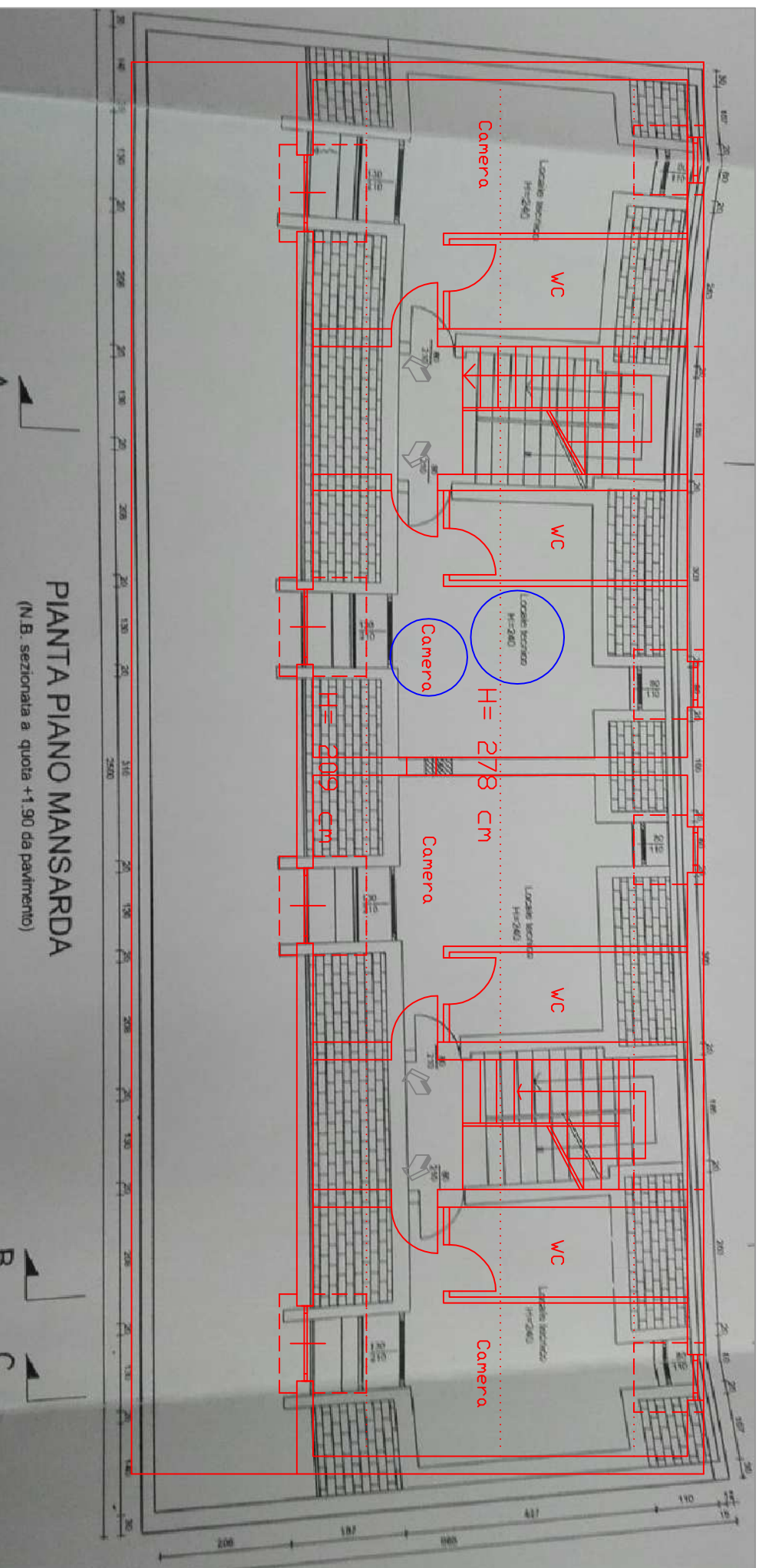
Rilievo

Variante in sanatoria 1523/06 arch. B. Tropea - 11/08/06

Scala 1:100



Comune di Nocera Terinese (CZ)
Foglio 32, P.IIa 474
Sovrapposizione Piano Secondo Sottotetto - Corpo A



DIFFORMITA' DIFFERENTE DESTINAZIONE D'USO

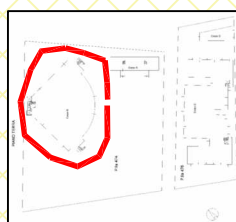
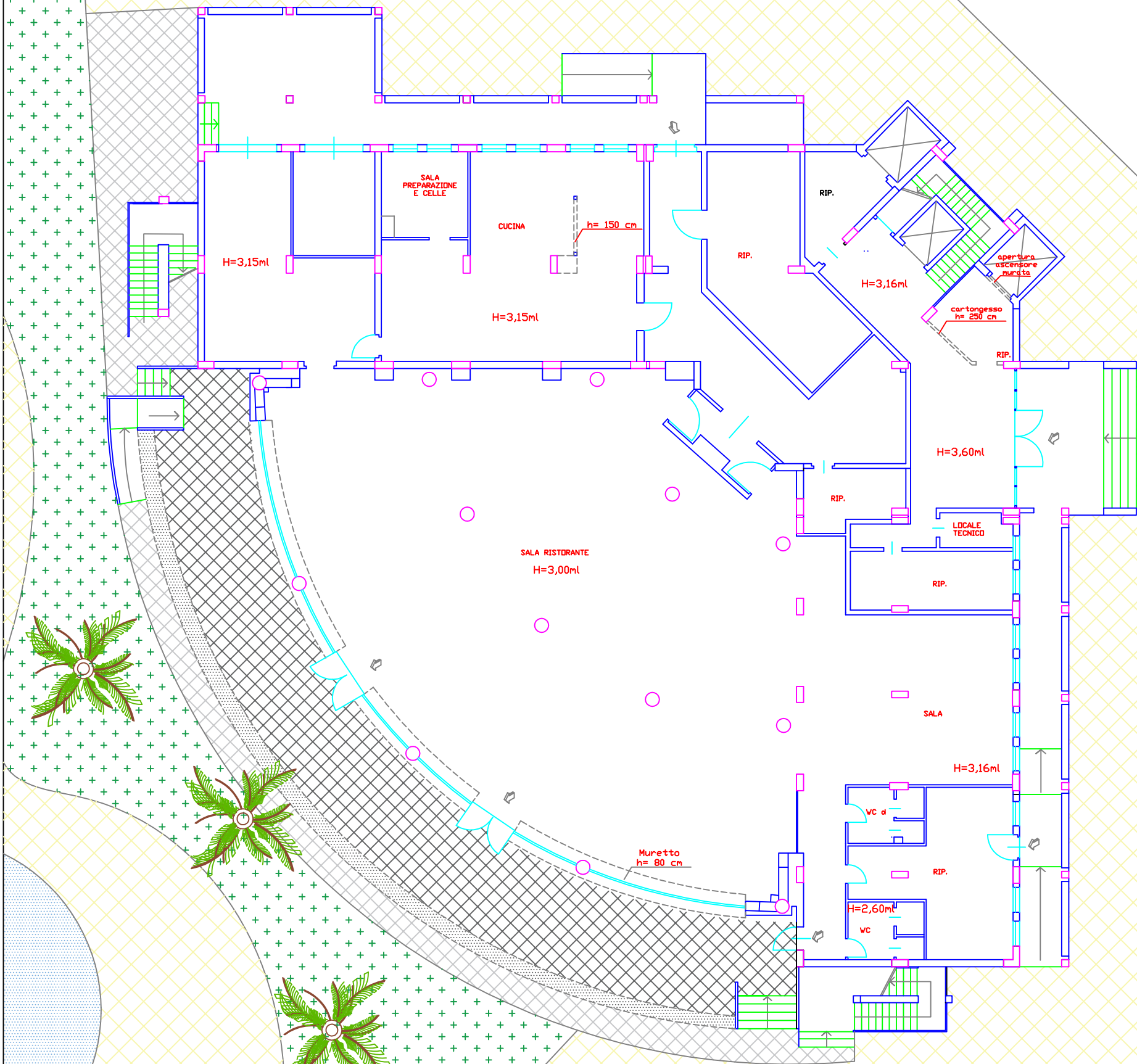
Rilievo

Variante in sanatoria 1523/06 arch. B. Tropea - 11/08/06

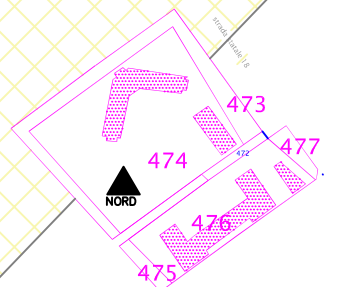
Scala 1:100



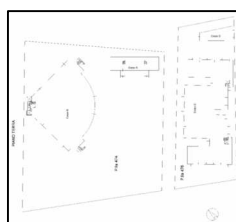
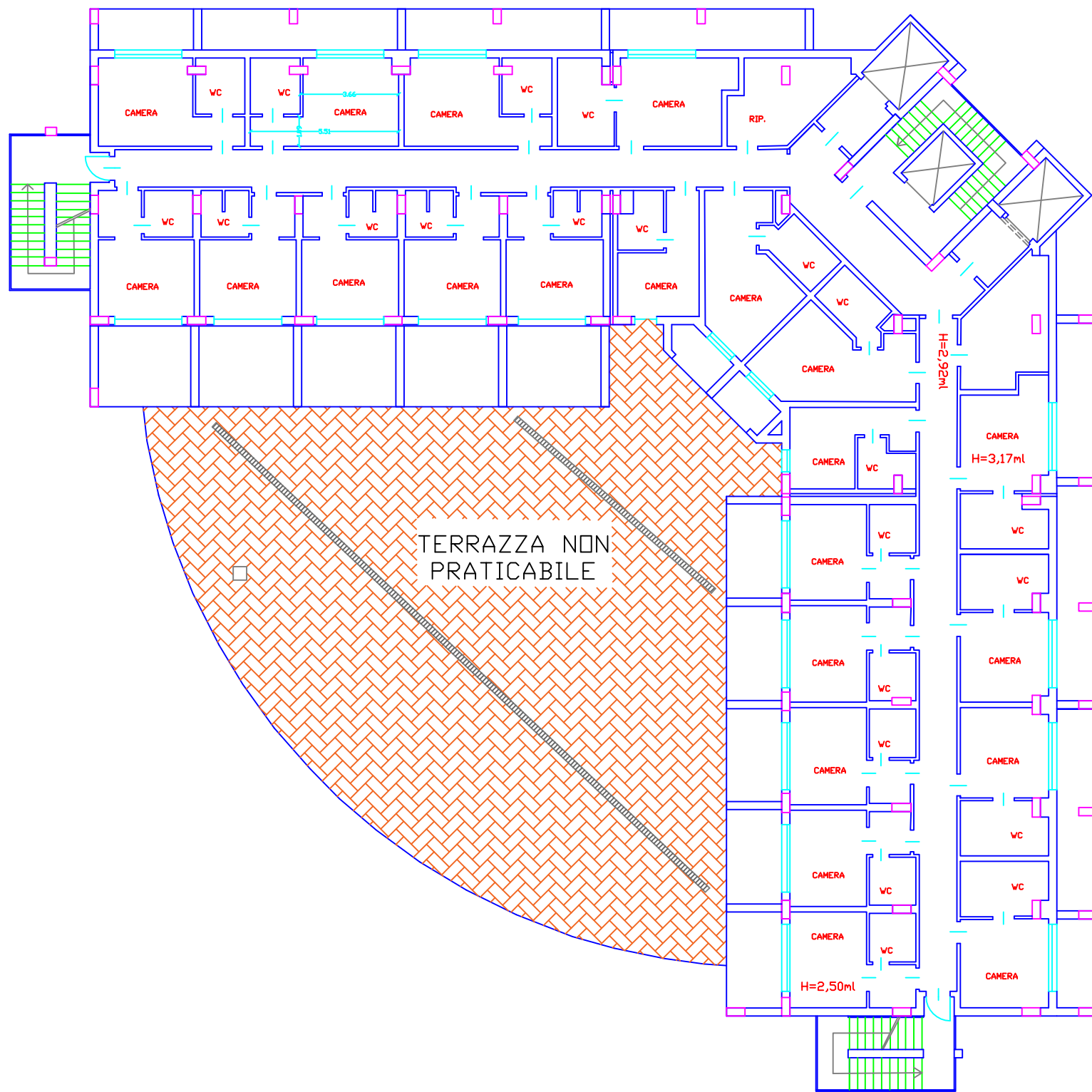
Comune di Nocera Terinese (CZ)
Foglio 32, P.IIa 474
Piano Terra - Corpo B



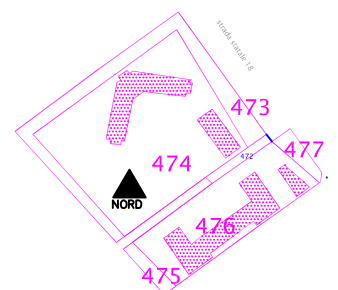
Scala 1:200



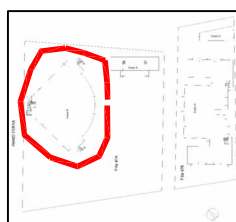
Comune di Nocera Terinese (CZ)
Foglio 32, P.Ia 474
Piano Primo - Corpo B



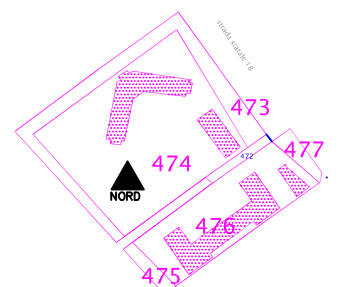
Scala 1:200



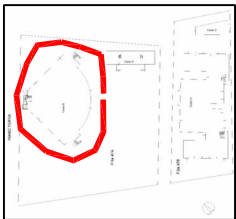
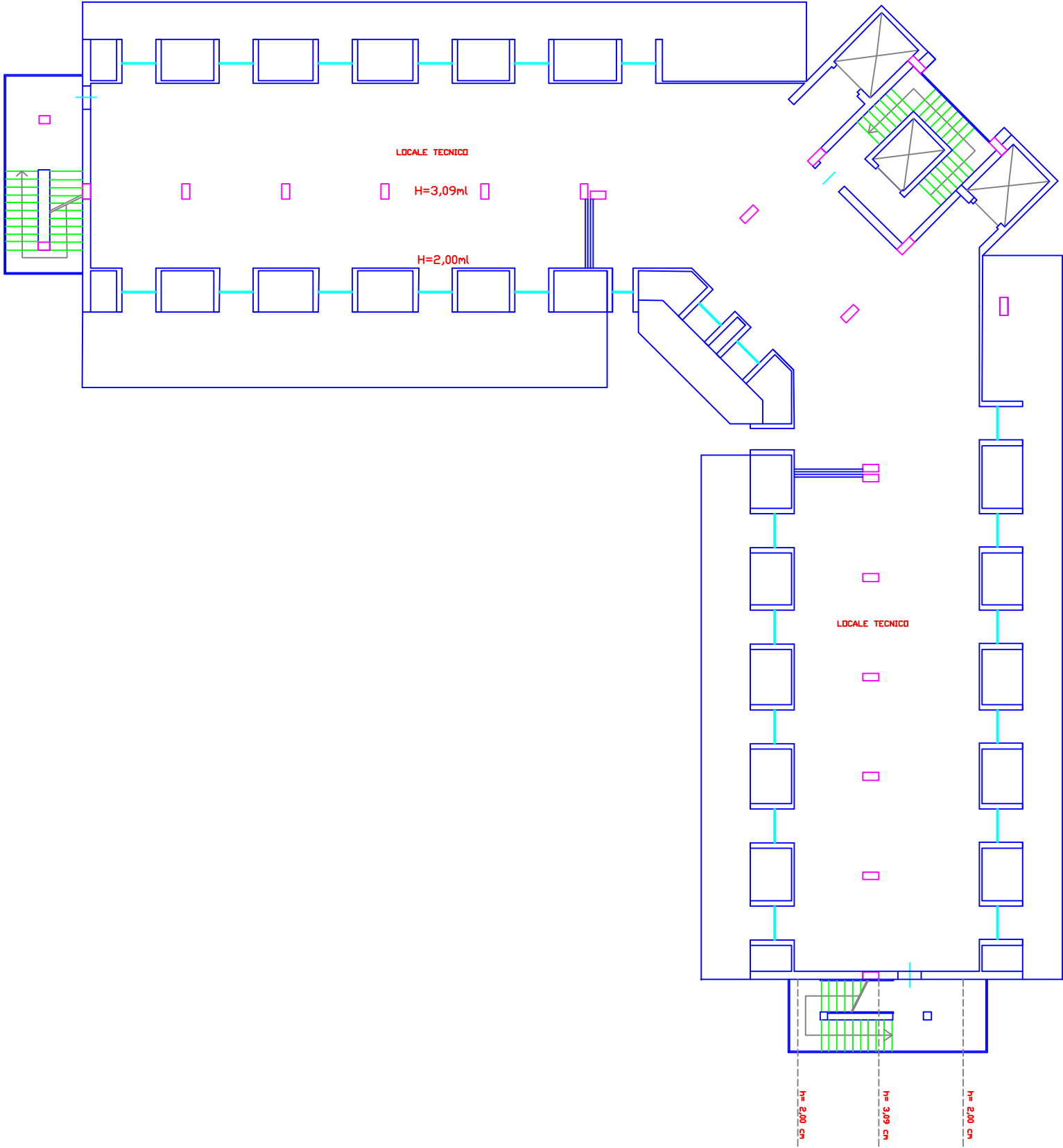
Comune di Nocera Terinese (CZ)
Foglio 32, P.IIa 474
Piano Secondo - Corpo B



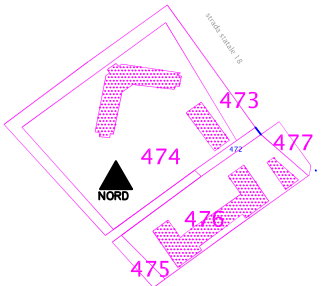
Scala 1:200



Comune di Nocera Terinese (CZ)
Foglio 32, P.IIa 474
Piano Terzo - Corpo B



Scala 1:200



Comune di Nocera Terinese (CZ)

Foglio 32, P.IIa 474

sovrapposizione Piano Terra – Corpo B



DIFFORMITA'!

MURI PROVVISORI DIVISORI

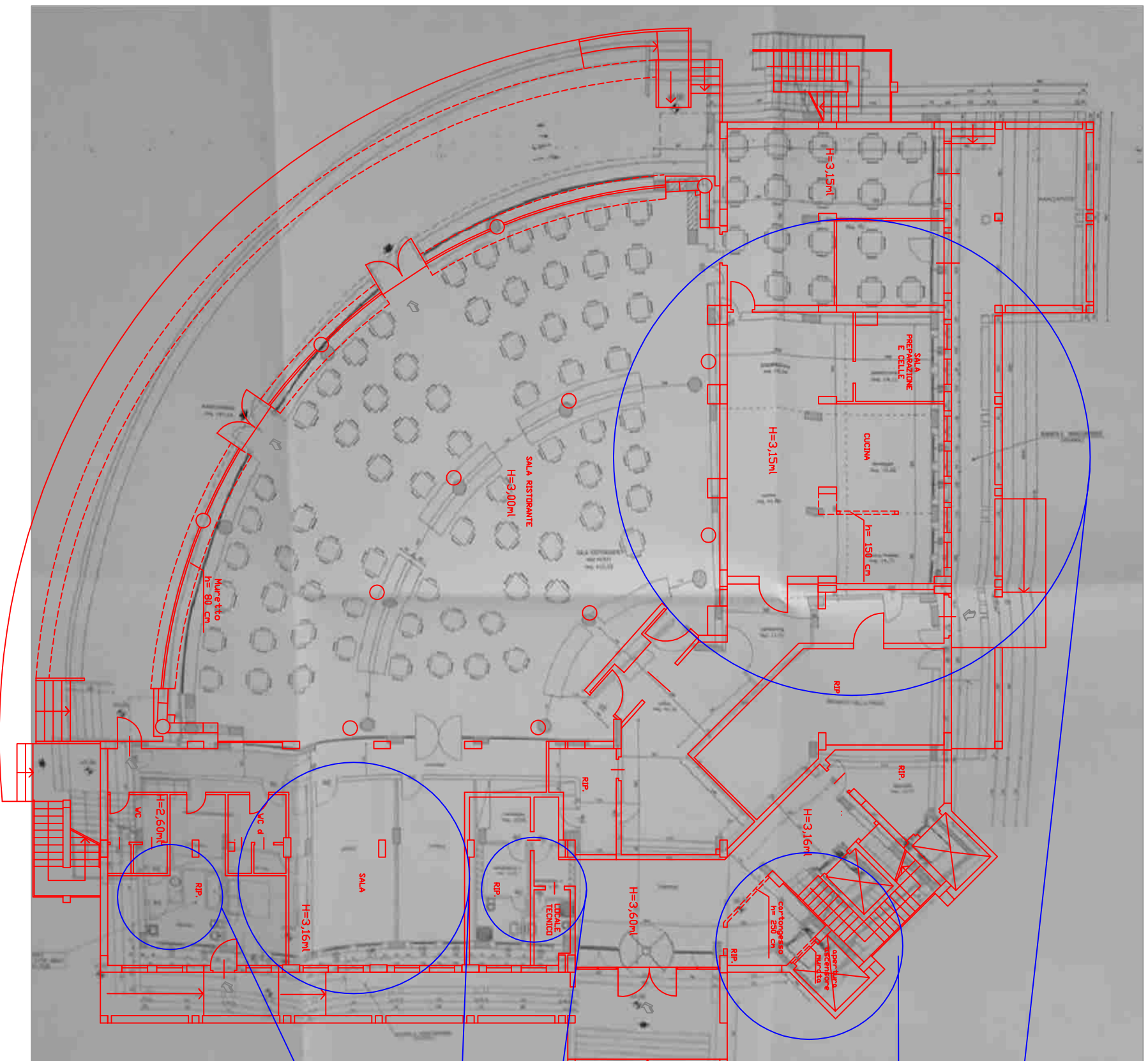


ASCENSORE MURATO

DIVERSA DISTRIBUZIONE
INTERNA



PARETE DIVISORIA NON
ESISTENTE;
AREA BENESSERE IN REALTA'
SALA RISTORANTE;

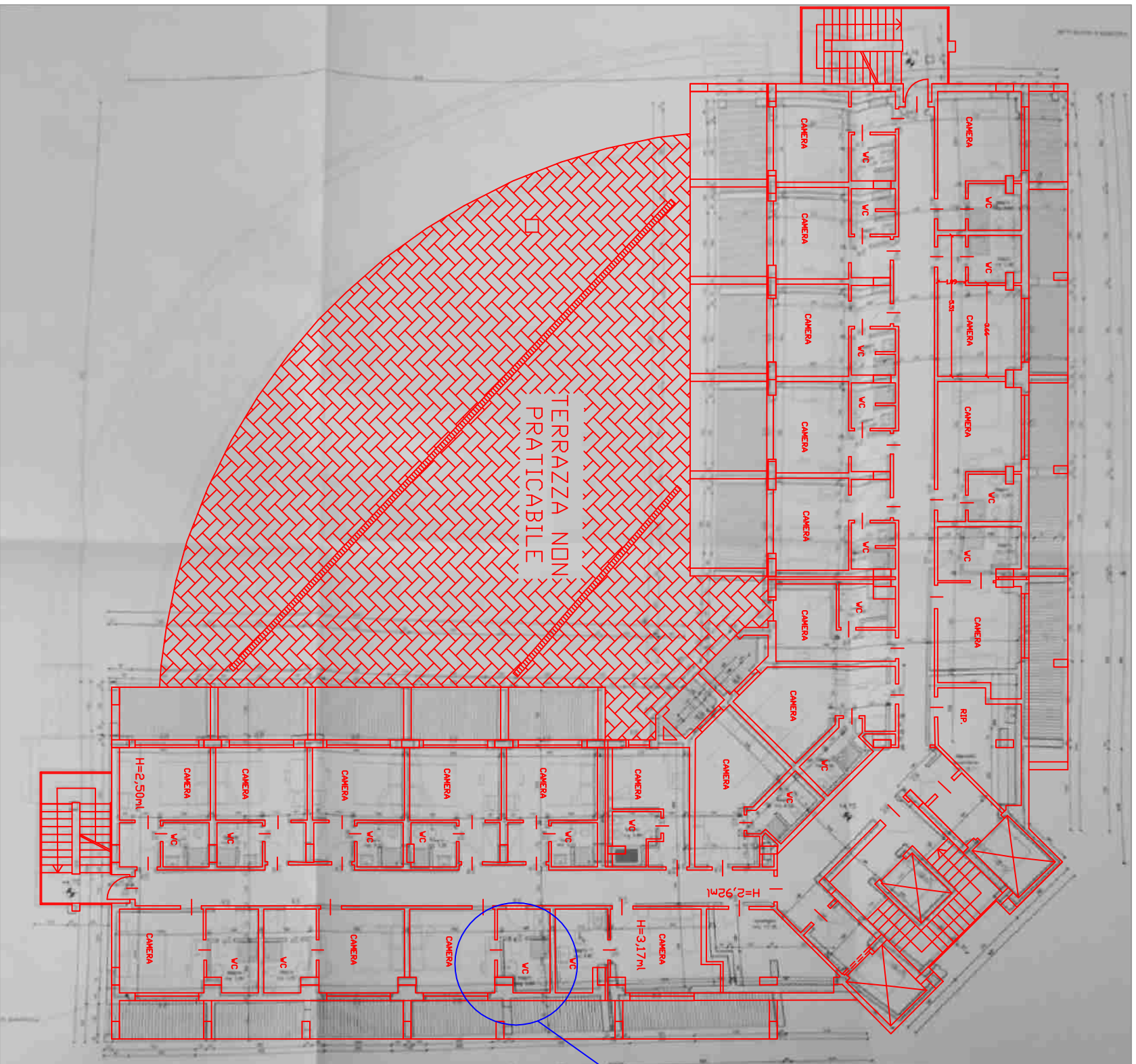


Rilievo

Variante in sanatoria 1523/06 arch. B. Tropea – 11/08/06

Scala 1:200

Comune di Nocera Terinese (CZ)
Foglio 32, P.IIa 474
Sovrapposizione Piano Primo – Corpo B



DIFORMITA'

DIFFERENTE DISTRIBUZIONE
INTERNA DI ALCUNE CAMERE E
DELLE PORTE



Rilievo

Variante in sanatoria 1523/06 arch. B. Tropea – 11/08/06

Scala 1:200

Comune di Nocera Terinese (CZ)

Foglio 32, P.IIa 474

Sovrapposizione Piano Secondo – Corpo B



DIFORMITA'!
DIFFERENTE DISTRIBUZIONE
INTERNA DI ALCUNE CAMERE E
DELLE PORTE

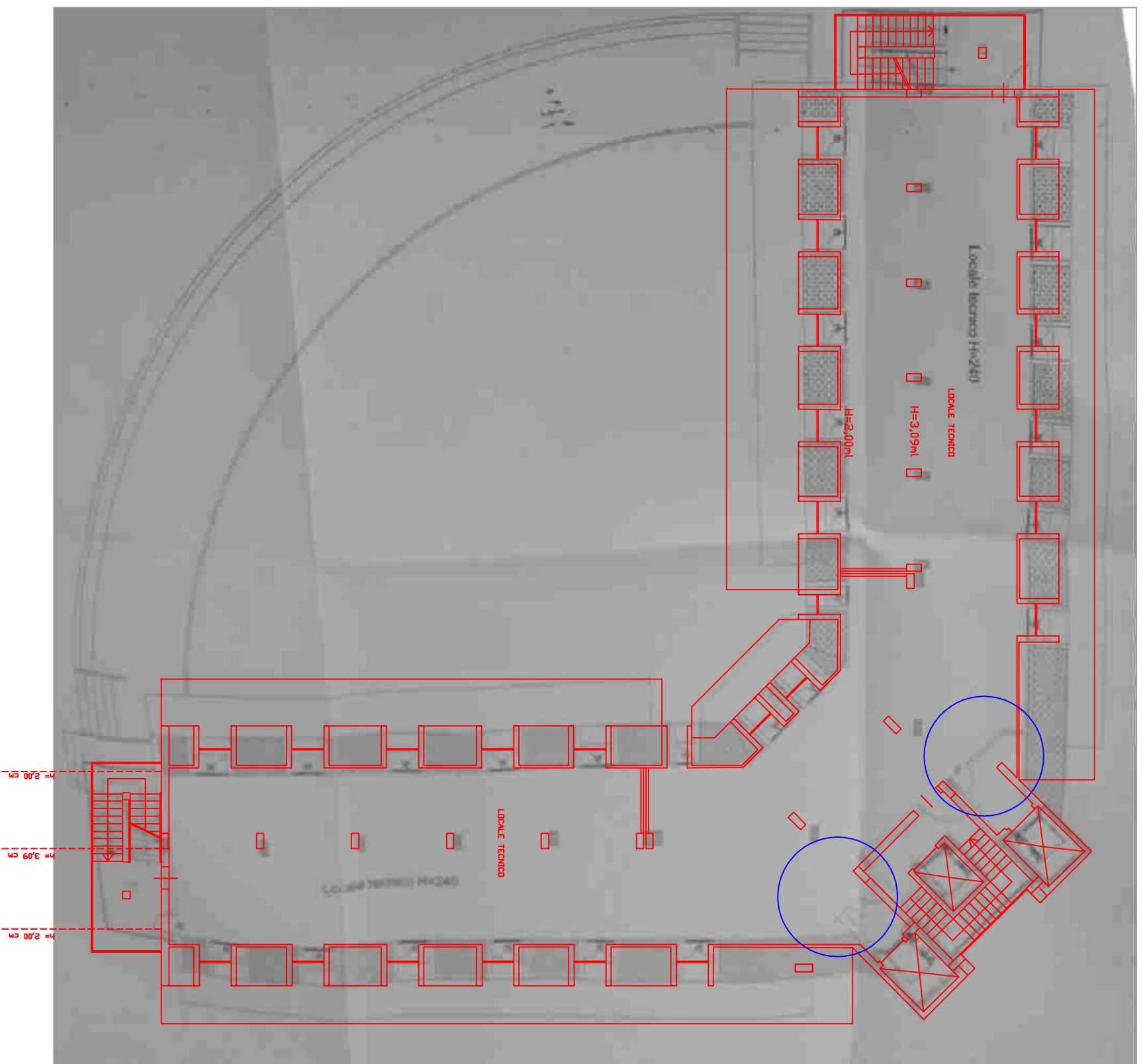


Rilievo

Variante in sanatoria 1523/06 arch. B. Tropea – 11/08/06

Scala 1:200

Comune di Nocera Terinese (CZ)
Foglio 32, P.IIa 474
sovrapposizione Piano Terra – Corpo B



DIFORMITA'
DIFFERENTE DISTRIBUZIONE DI
ALCUNE PARETI DIVISORIE
INTERNE



Rilievo

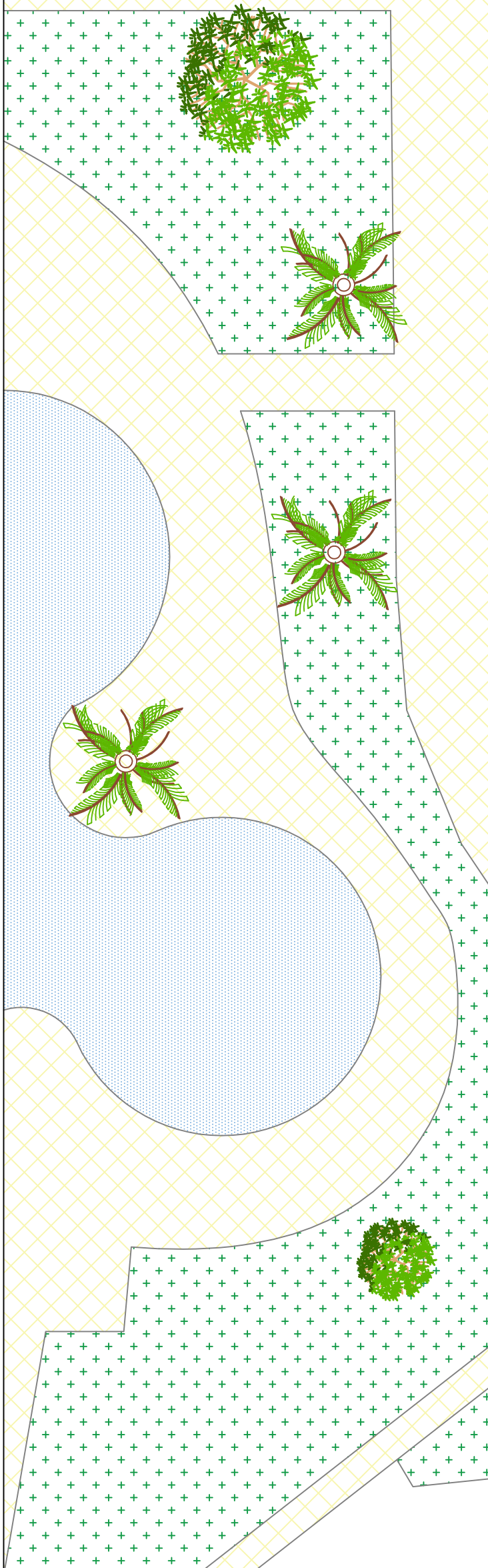
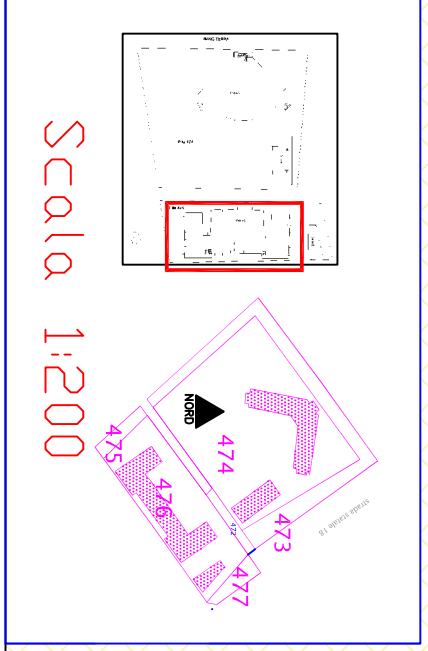
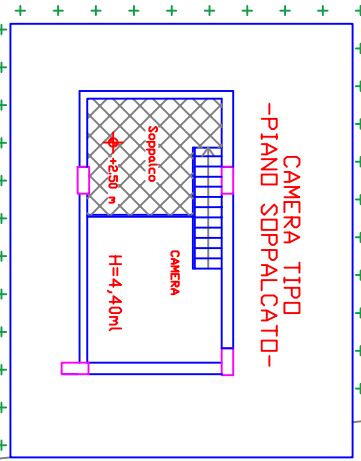
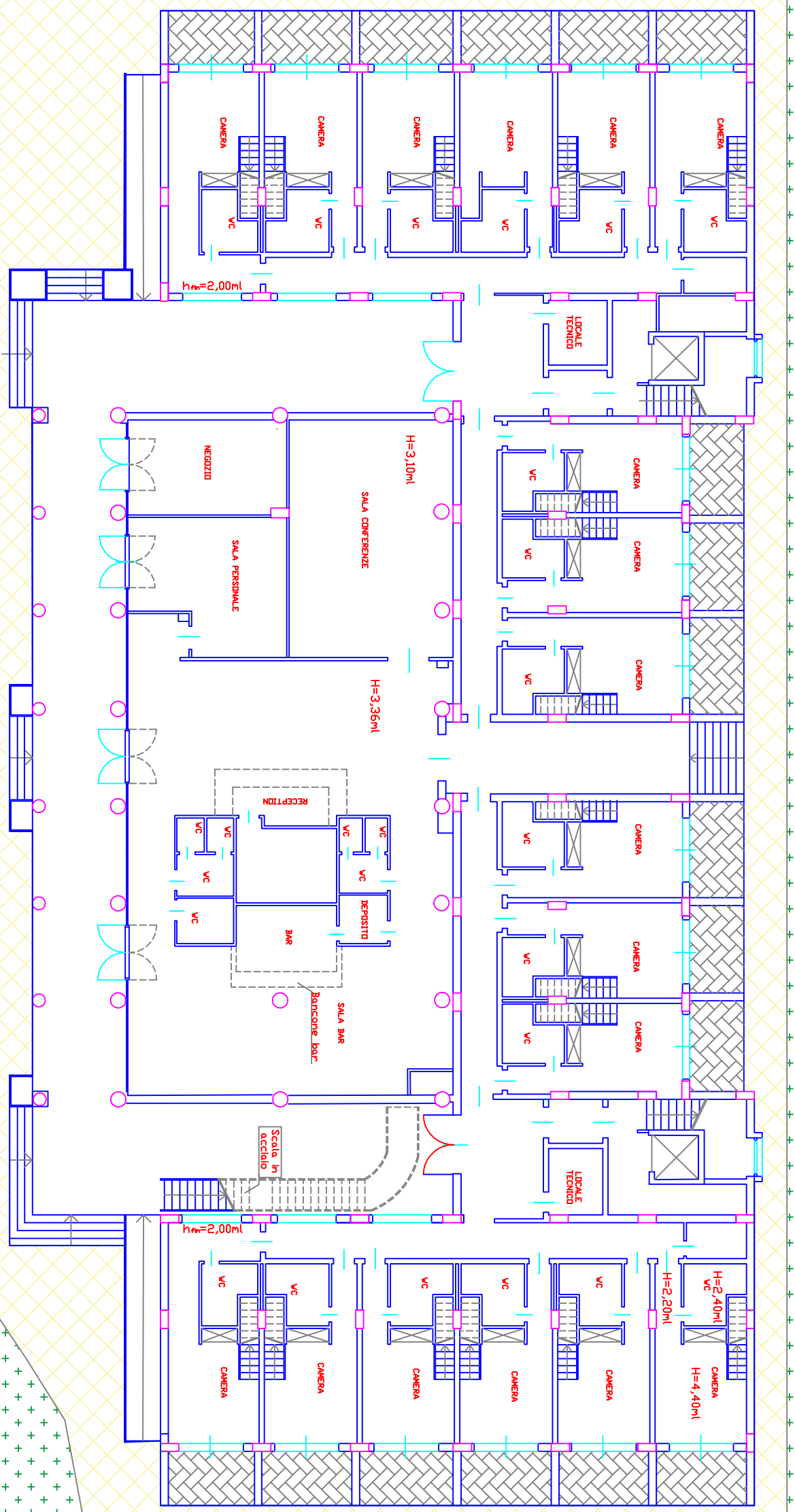
Variante in sanatoria 1523/06 arch. B. Tropea – 11/08/06

Scala 1:200

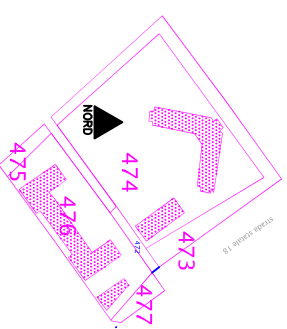
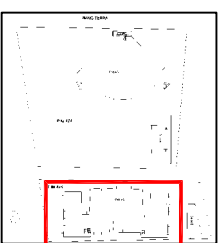
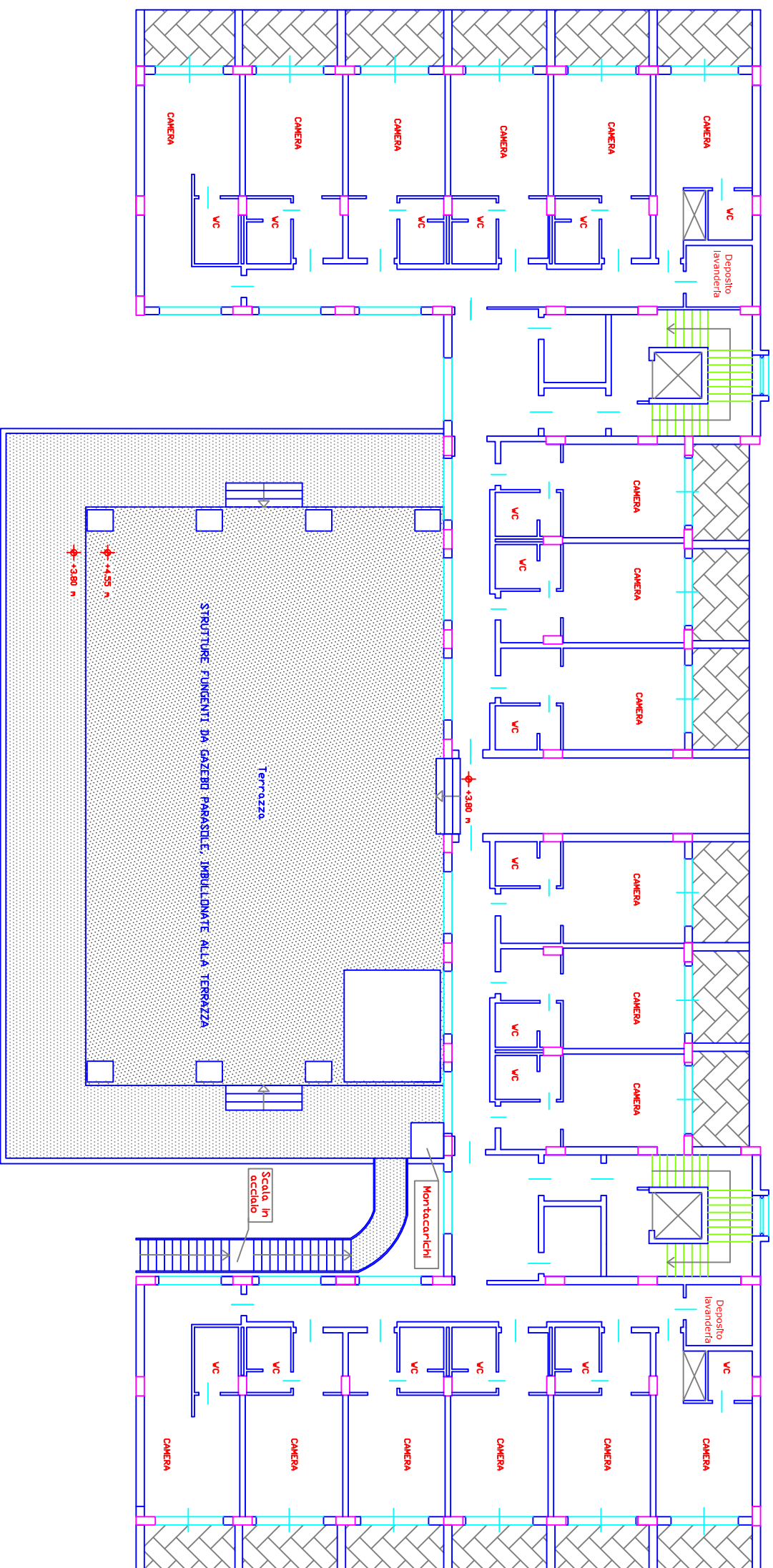
Comune di Nocera Terinese (CZ)

Foglio 32, P.IIa 476

Piano Terra - Corpo C

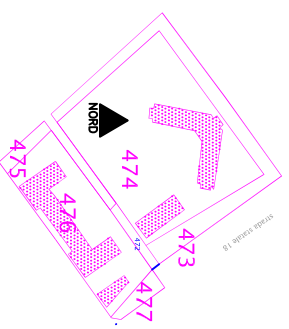
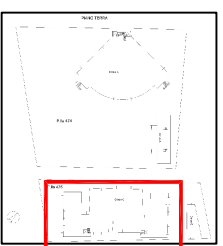
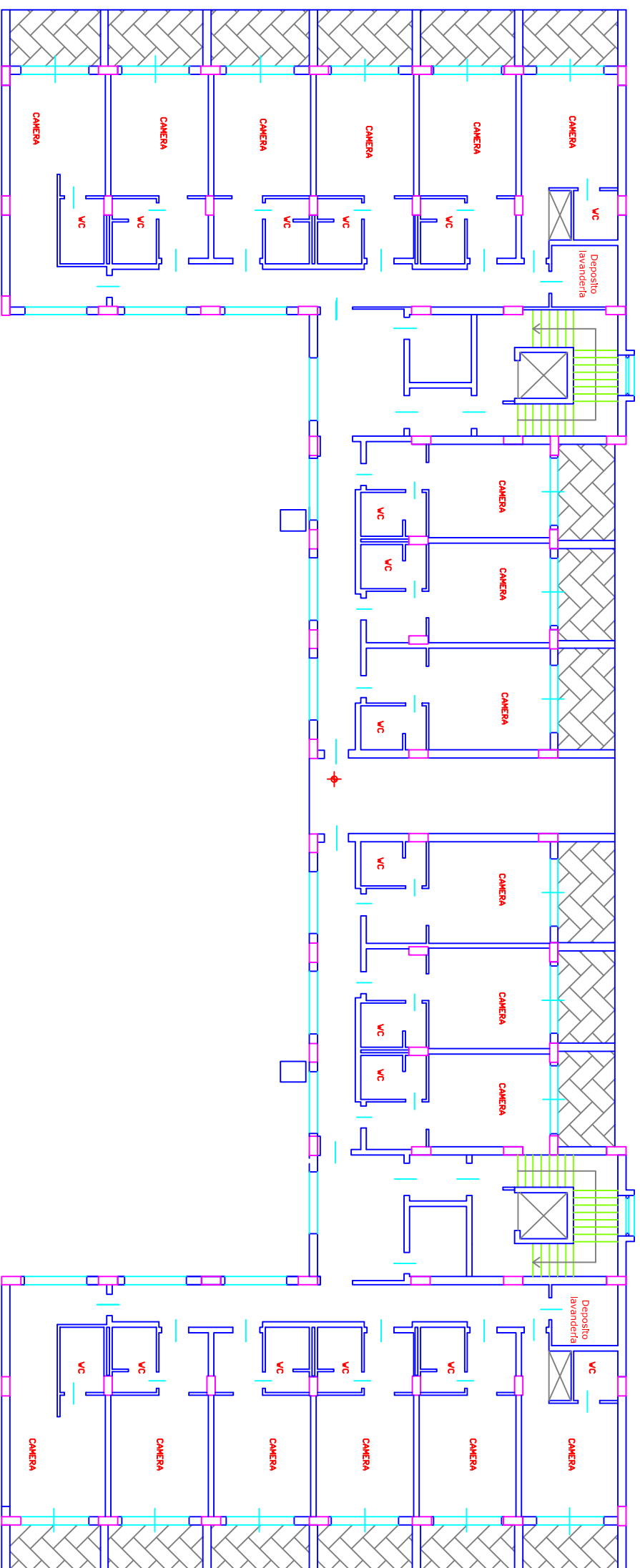


Comune di Nocera Terinese (CZ)
Foglio 32, P.IIa 476
Piano Primo – Corpo C



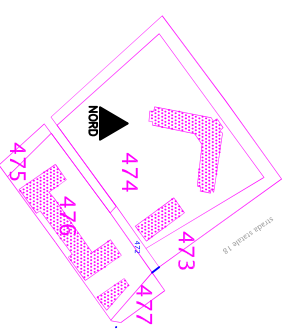
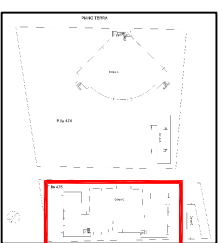
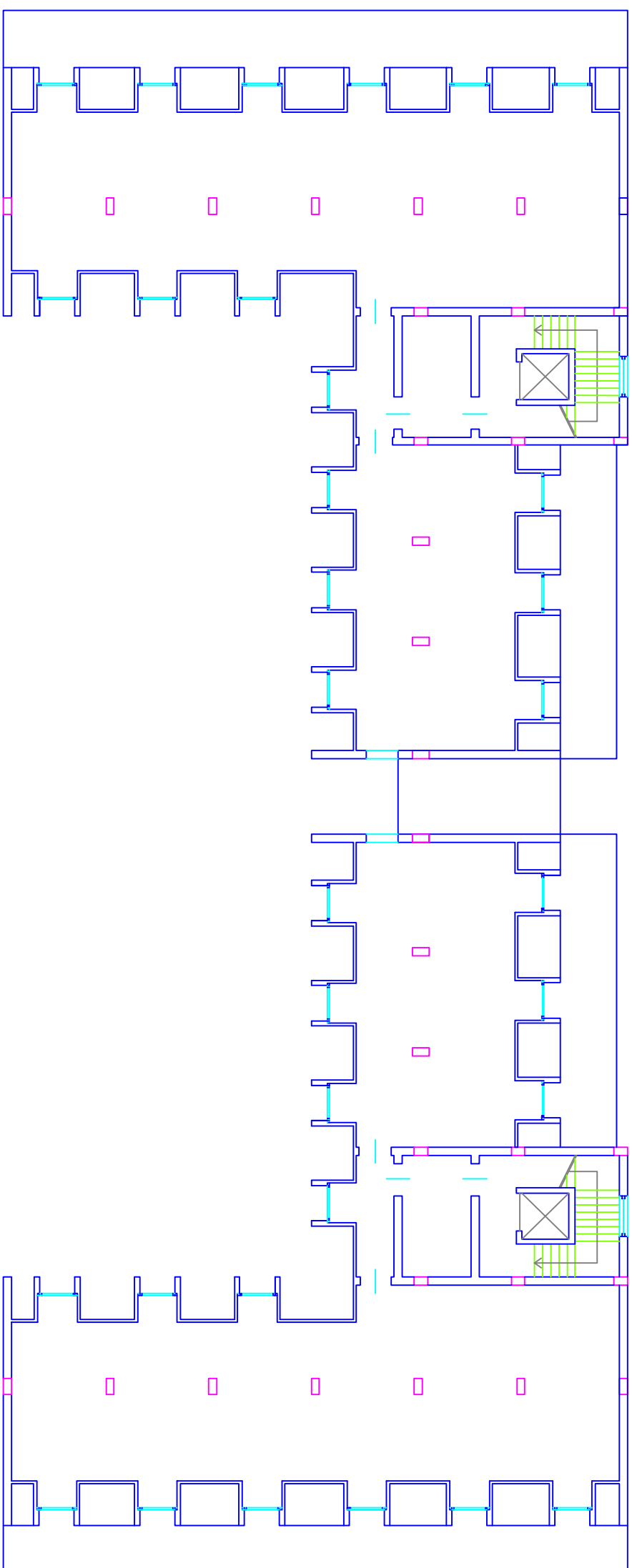
Scala 1:200

Comune di Nocera Terinese (CZ)
Foglio 32, P.IIa 476
Piano Secondo – Corpo C

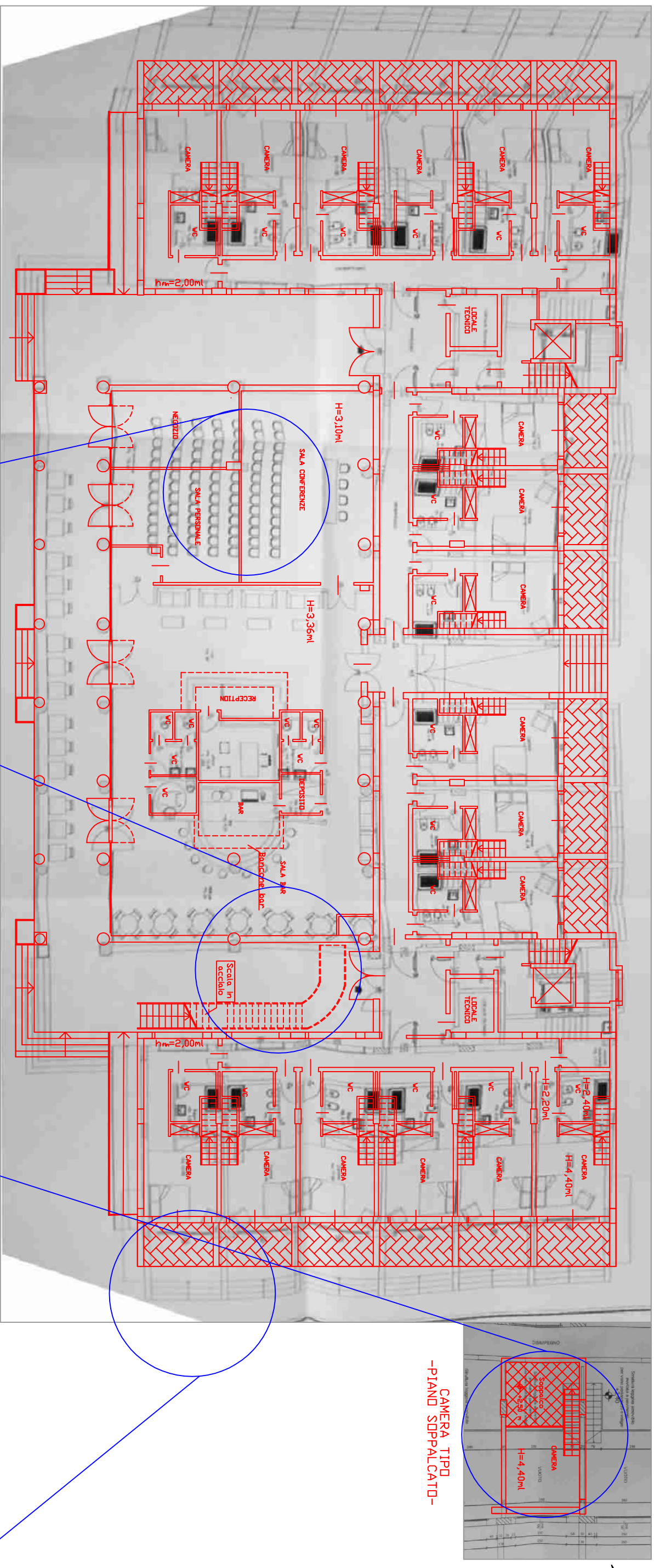


Scala 1:200

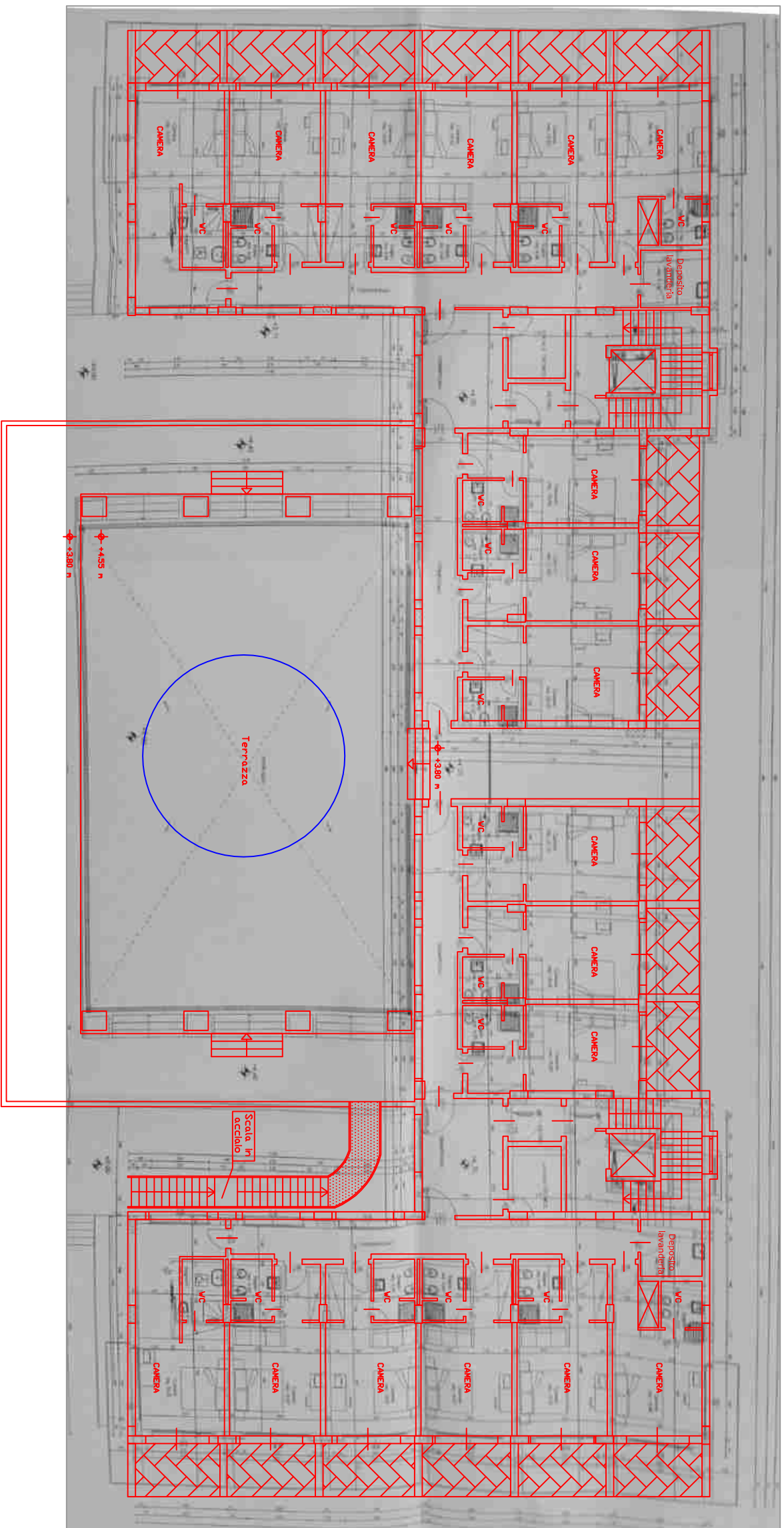
Comune di Nocera Terinese (CZ)
Foglio 32, P.IIa 476
Piano Terzo Sottotetto - Corpo C



Scala 1:200



<p>DIFFORMITA':</p> <p>DIFFERENTE DISTRIBUZIONE AREA CON DIVERSA SUDDIVISIONE INTERNA</p>	<p>SCALA IN ACCIAID</p>	<p>SOPPALCO UTILIZZATO IMPRPRIAMENTE</p>	<p>SCALE ESTERNE NON PRESENTI</p>
 <p>30/06/2016 12:09 PM</p>	 <p>30/06/2016 12:28 PM</p>	 <p>30/06/2016 12:38 PM</p>	 <p>30/06/2016 12:17 PM</p>



DIFFORMITA':

STRUTTURE FUNGENTI DA GAZEBO PARASOLE,
IMBULLONATE ALLA TERRAZZA

30/08/2016 12:26 PM

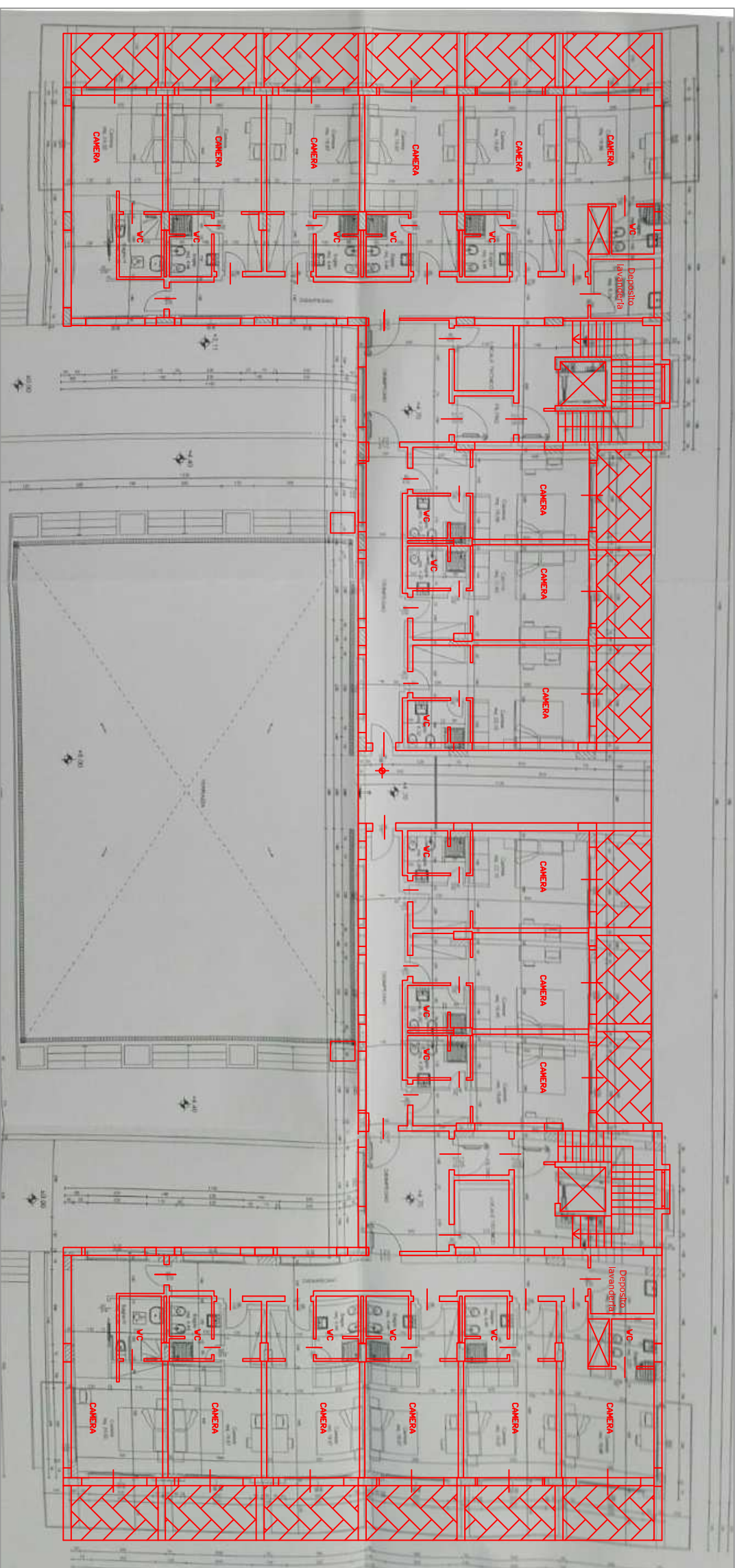
Rilievo

Variante in sanatoria 1523/06 arch. B. Tropea - 11/08/06

Scala 1:200



Comune di Nocera Terinese (CZ) – Foglio 32, P.IIa 476 –
Sovrapposizione Piano Secondo – Corpo C



DIFFORMITA': NESSUNA DIFFORMITA'

Rilievo

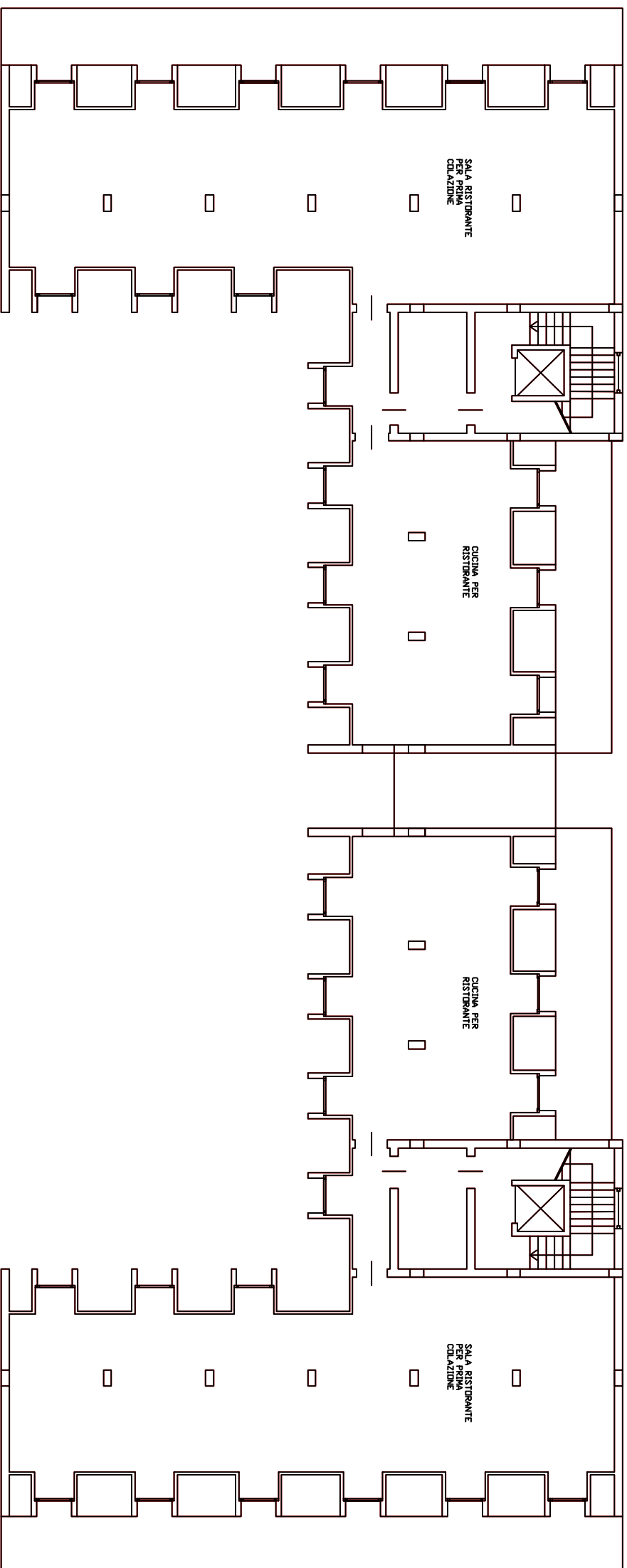
Variante in sanatoria 1523/06 arch. B. Tropea – 11/08/06

Scala 1:200

Comune di Nocera Terinese (CZ)

Foglio 32, P.IIa 476

Sovrapposizione - Piano Terzo Sottotetto - Corpo C



DIFORMITA'!

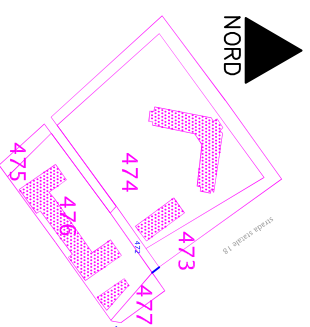
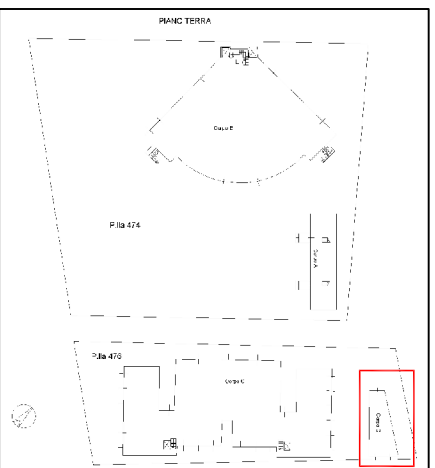
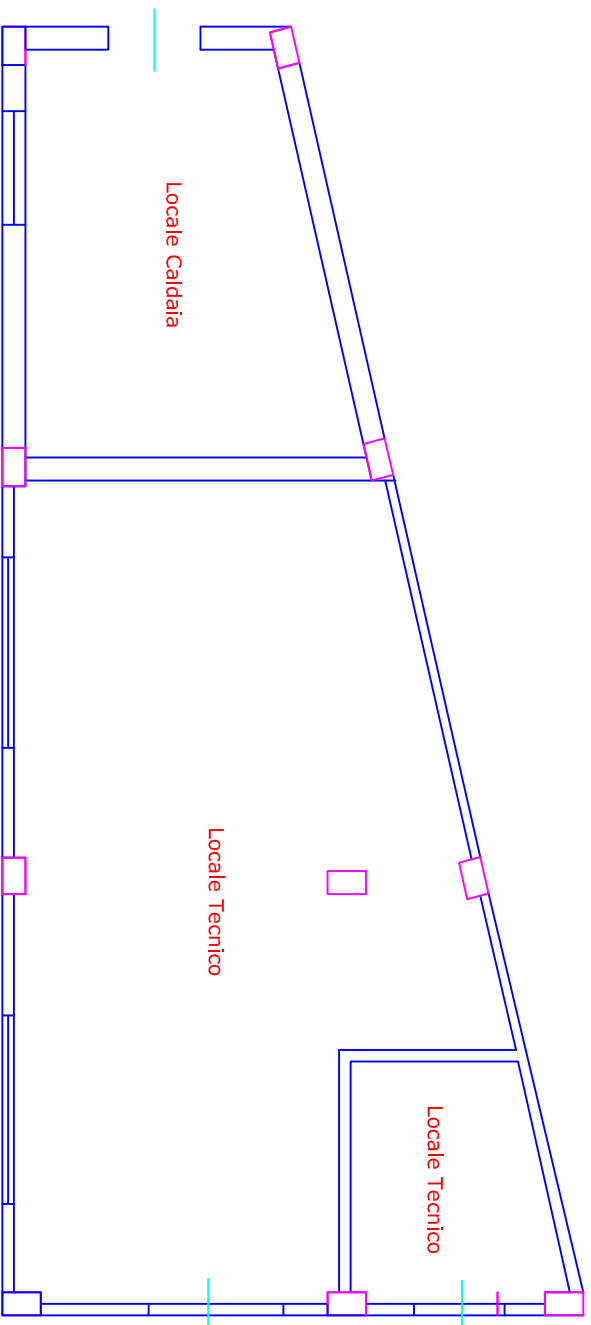
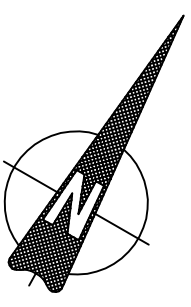
NESSUNA DIFORMITA' - AREA NON
RIFINITA ANCORA ALLO STATO RUSTICO

Rilievo

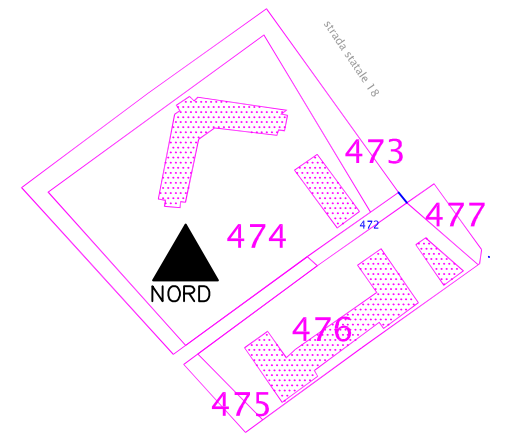
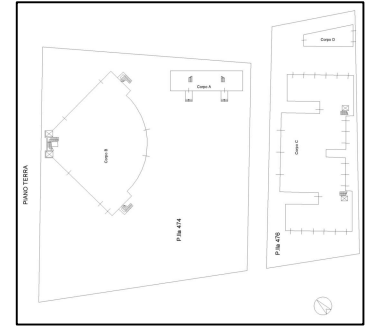
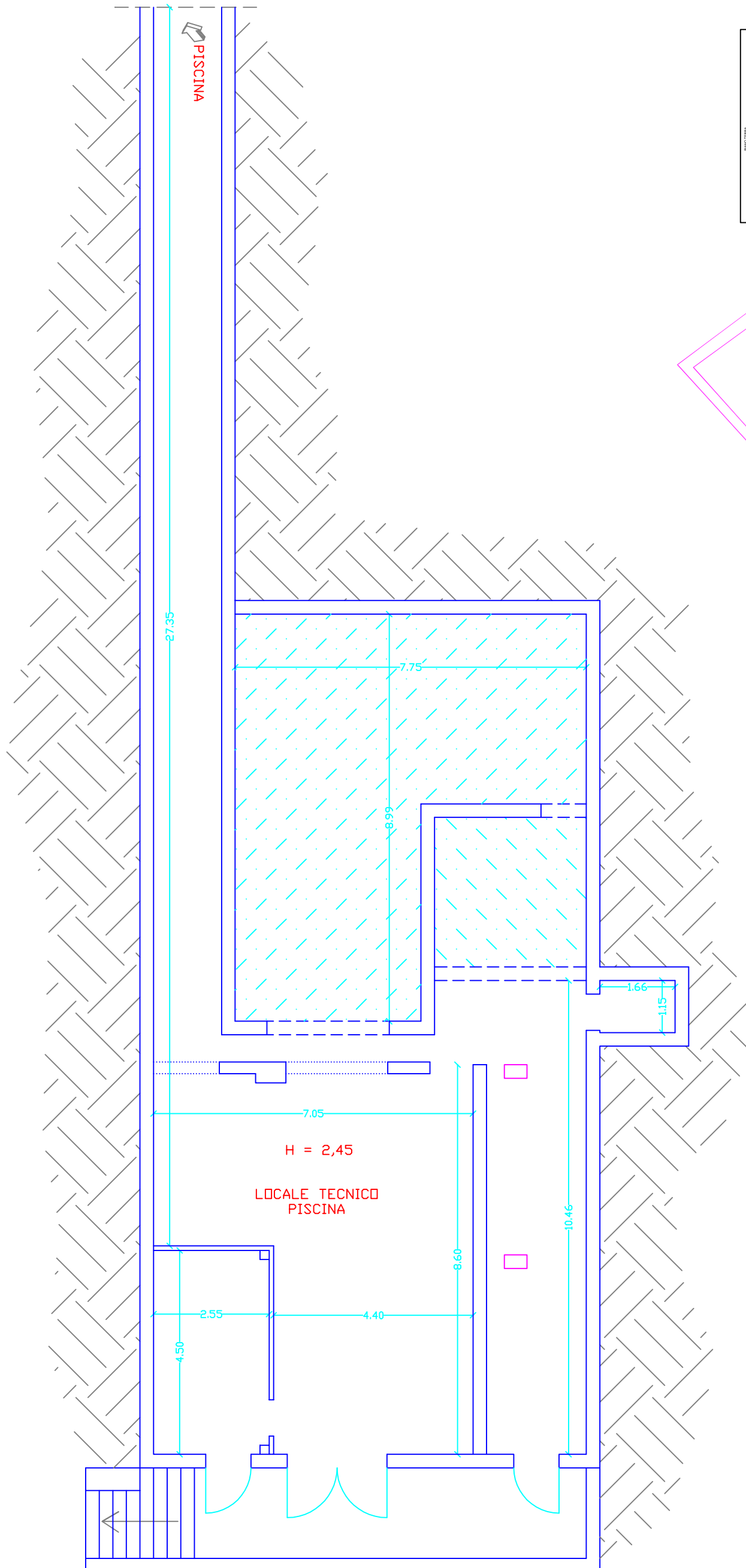
Variante in sanatoria 1523/06 arch. B. Tropea - 11/08/06

Scala 1:200

Comune di Nocera Terinese (CZ)
Foglio 32, P.IIa 474
Piano Terra - Corpo D



Comune di Nocera Terinese (CZ)
Foglio 32, P.IIa 474
Piano Interrato
Locale Tecnologico a servizio della Piscina

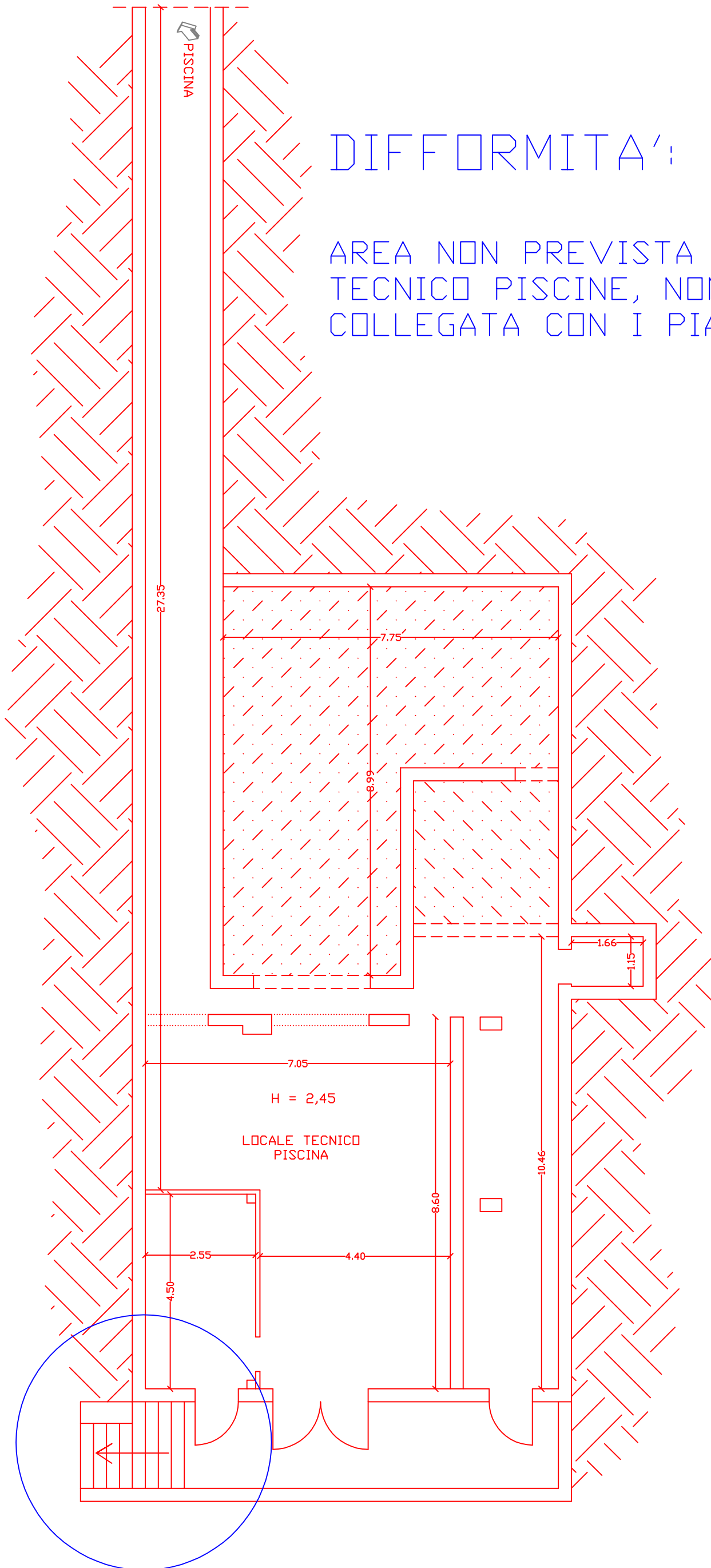


Scala 1:100

Comune di Nocera Terinese (CZ)
Foglio 32, P.IIa 474
Valutazione difformità - Piano Interrato
Locale Tecnologico a servizio della Piscina

DIFFORMITA':

AREA NON PREVISTA COME LOCALE
TECNICO PISCINE, NON DOVREBBE ESSERE
COLLEGATA CON I PIANI SUPERIORI



Scala 1:100