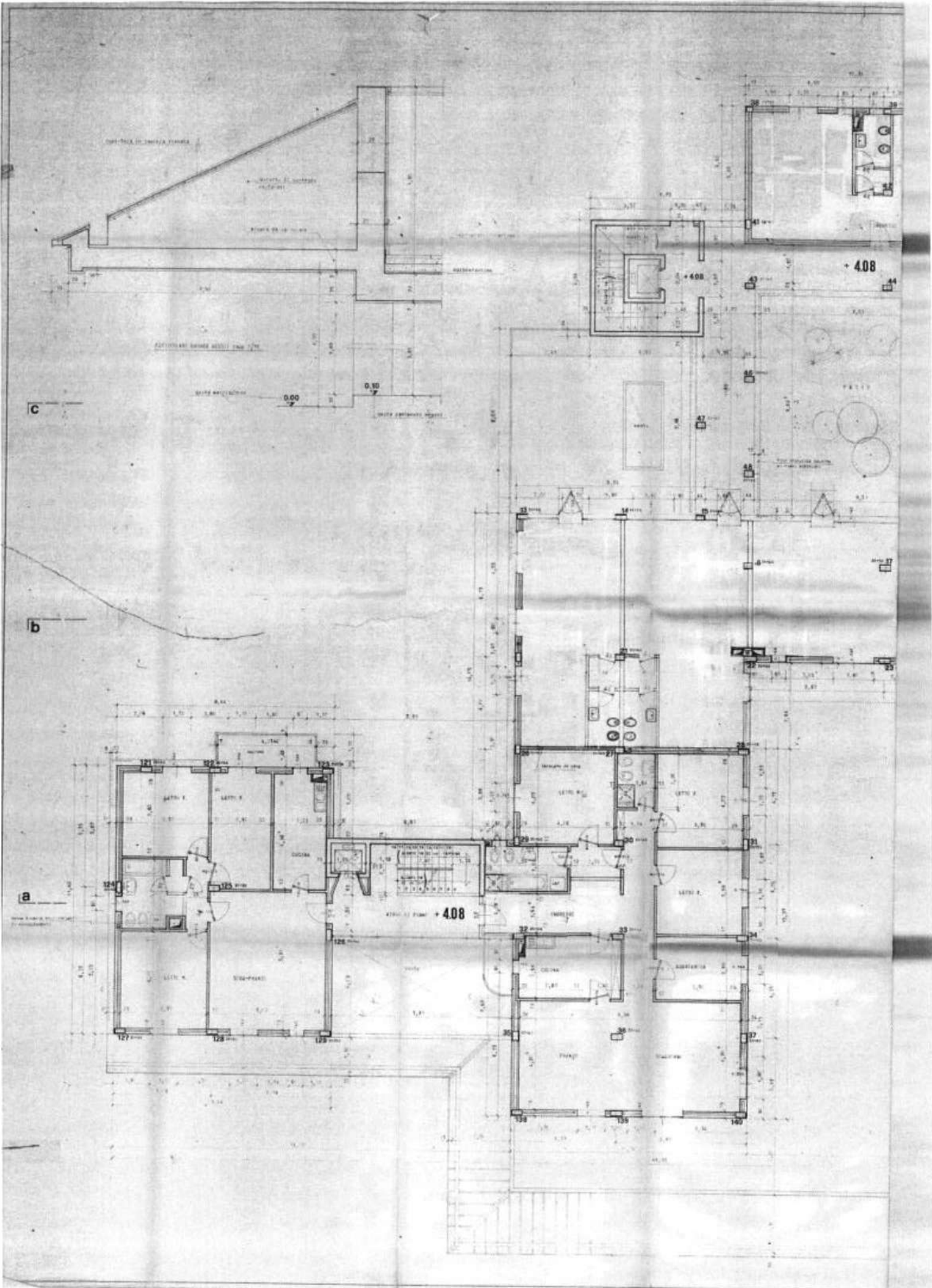


1. 1:100  
 2. 1:100  
 3. 1:100  
 4. 1:100  
 5. 1:100  
 6. 1:100  
 7. 1:100  
 8. 1:100  
 9. 1:100  
 10. 1:100  
 11. 1:100  
 12. 1:100  
 13. 1:100  
 14. 1:100  
 15. 1:100  
 16. 1:100  
 17. 1:100  
 18. 1:100  
 19. 1:100  
 20. 1:100  
 21. 1:100  
 22. 1:100  
 23. 1:100  
 24. 1:100  
 25. 1:100  
 26. 1:100  
 27. 1:100  
 28. 1:100  
 29. 1:100  
 30. 1:100  
 31. 1:100  
 32. 1:100  
 33. 1:100  
 34. 1:100  
 35. 1:100  
 36. 1:100  
 37. 1:100  
 38. 1:100  
 39. 1:100  
 40. 1:100  
 41. 1:100  
 42. 1:100  
 43. 1:100  
 44. 1:100  
 45. 1:100  
 46. 1:100  
 47. 1:100  
 48. 1:100  
 49. 1:100  
 50. 1:100  
 51. 1:100  
 52. 1:100  
 53. 1:100  
 54. 1:100  
 55. 1:100  
 56. 1:100  
 57. 1:100  
 58. 1:100  
 59. 1:100  
 60. 1:100  
 61. 1:100  
 62. 1:100  
 63. 1:100  
 64. 1:100  
 65. 1:100  
 66. 1:100  
 67. 1:100  
 68. 1:100  
 69. 1:100  
 70. 1:100  
 71. 1:100  
 72. 1:100  
 73. 1:100  
 74. 1:100  
 75. 1:100  
 76. 1:100  
 77. 1:100  
 78. 1:100  
 79. 1:100  
 80. 1:100  
 81. 1:100  
 82. 1:100  
 83. 1:100  
 84. 1:100  
 85. 1:100  
 86. 1:100  
 87. 1:100  
 88. 1:100  
 89. 1:100  
 90. 1:100  
 91. 1:100  
 92. 1:100  
 93. 1:100  
 94. 1:100  
 95. 1:100  
 96. 1:100  
 97. 1:100  
 98. 1:100  
 99. 1:100  
 100. 1:100

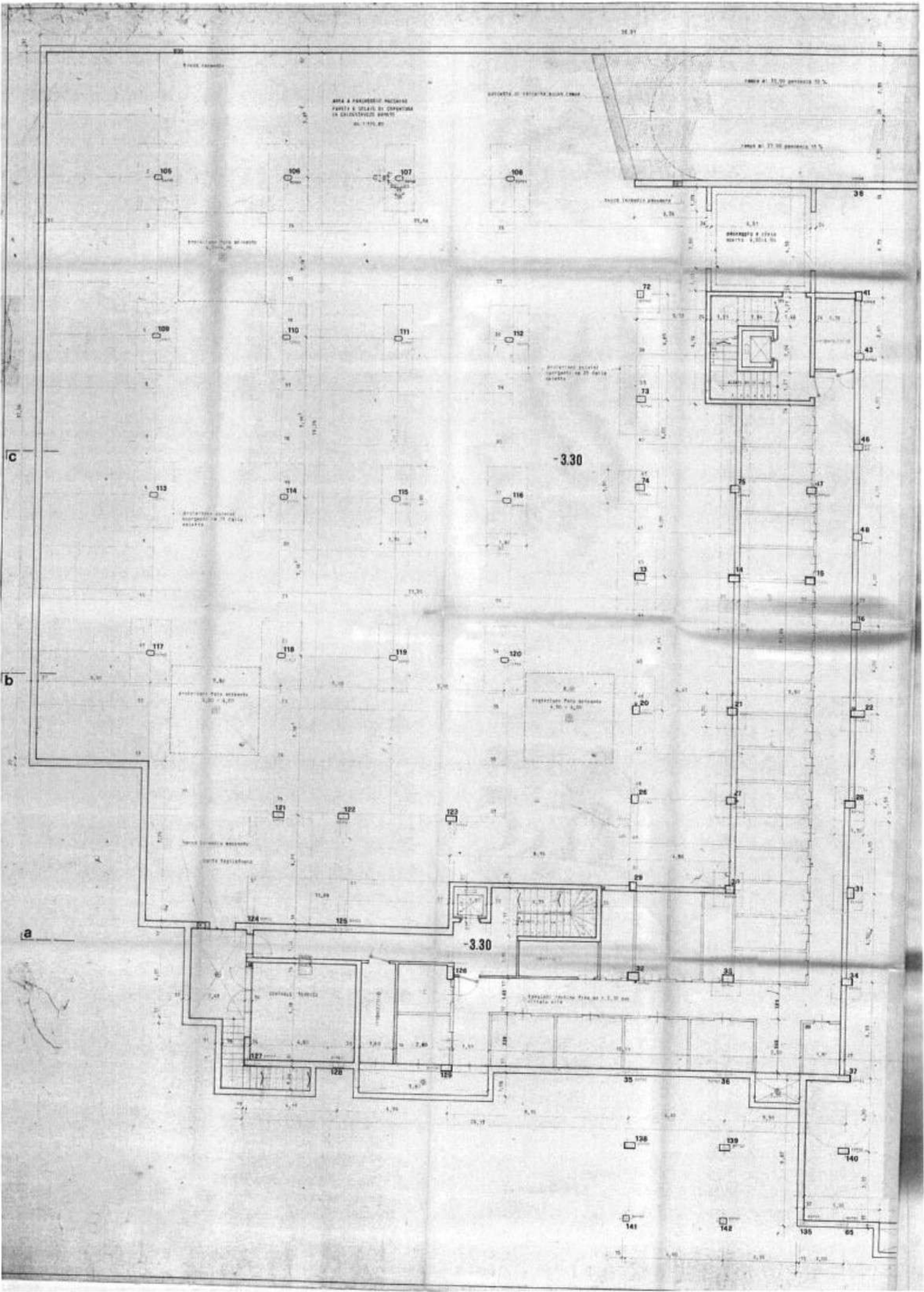
|    |    |    |    |    |    |    |    |    |     |
|----|----|----|----|----|----|----|----|----|-----|
| 1  | 2  | 3  | 4  | 5  | 6  | 7  | 8  | 9  | 10  |
| 11 | 12 | 13 | 14 | 15 | 16 | 17 | 18 | 19 | 20  |
| 21 | 22 | 23 | 24 | 25 | 26 | 27 | 28 | 29 | 30  |
| 31 | 32 | 33 | 34 | 35 | 36 | 37 | 38 | 39 | 40  |
| 41 | 42 | 43 | 44 | 45 | 46 | 47 | 48 | 49 | 50  |
| 51 | 52 | 53 | 54 | 55 | 56 | 57 | 58 | 59 | 60  |
| 61 | 62 | 63 | 64 | 65 | 66 | 67 | 68 | 69 | 70  |
| 71 | 72 | 73 | 74 | 75 | 76 | 77 | 78 | 79 | 80  |
| 81 | 82 | 83 | 84 | 85 | 86 | 87 | 88 | 89 | 90  |
| 91 | 92 | 93 | 94 | 95 | 96 | 97 | 98 | 99 | 100 |



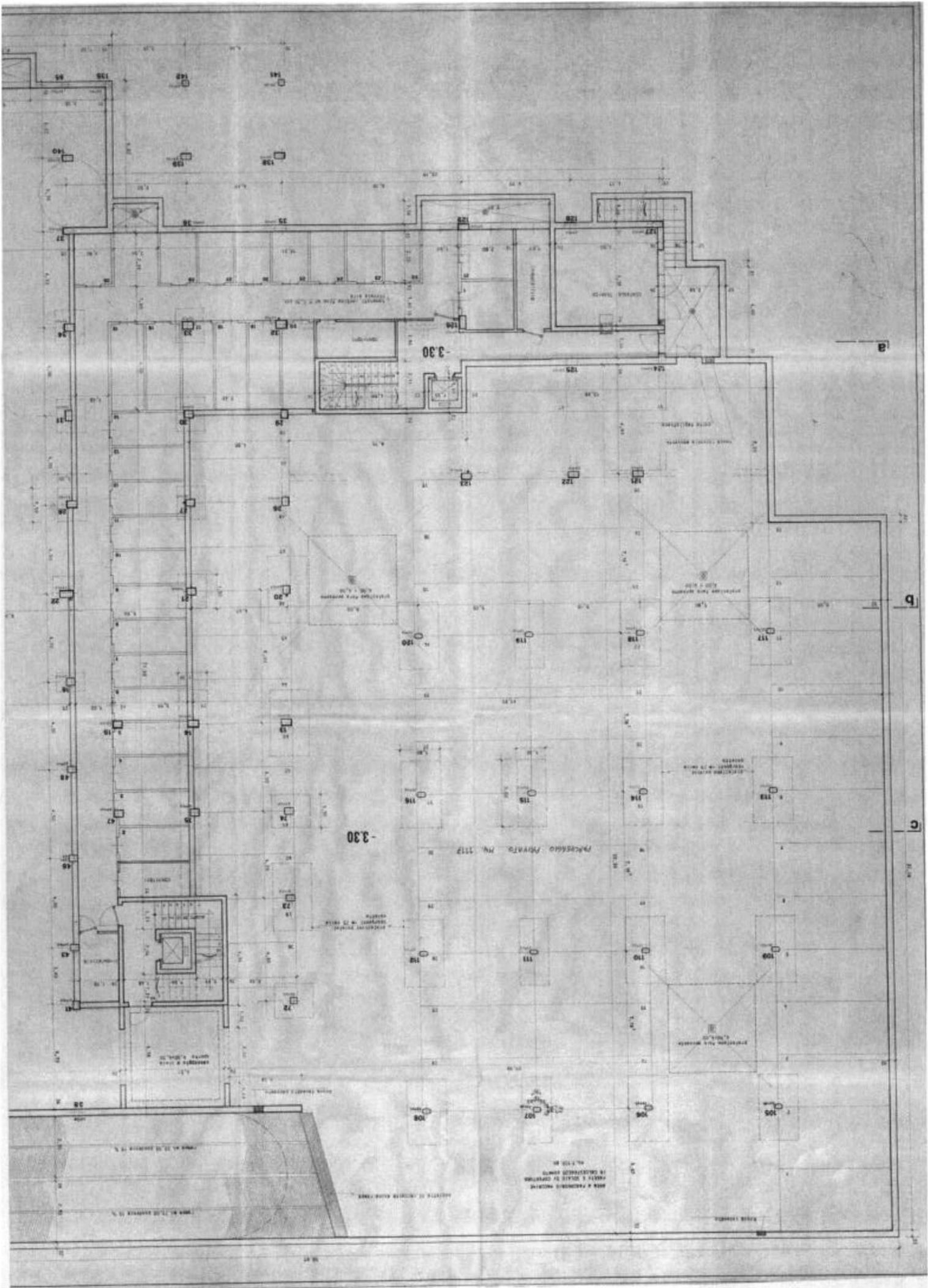




|     |     |     |     |     |     |     |     |     |     |     |     |     |     |     |     |     |     |     |     |     |     |     |     |     |     |     |     |     |     |     |     |     |     |     |     |     |     |     |     |     |     |     |     |     |     |     |     |     |     |     |     |     |     |     |     |     |     |     |     |     |     |     |
|-----|-----|-----|-----|-----|-----|-----|-----|-----|-----|-----|-----|-----|-----|-----|-----|-----|-----|-----|-----|-----|-----|-----|-----|-----|-----|-----|-----|-----|-----|-----|-----|-----|-----|-----|-----|-----|-----|-----|-----|-----|-----|-----|-----|-----|-----|-----|-----|-----|-----|-----|-----|-----|-----|-----|-----|-----|-----|-----|-----|-----|-----|-----|
| 1   | 2   | 3   | 4   | 5   | 6   | 7   | 8   | 9   | 10  | 11  | 12  | 13  | 14  | 15  | 16  | 17  | 18  | 19  | 20  | 21  | 22  | 23  | 24  | 25  | 26  | 27  | 28  | 29  | 30  | 31  | 32  | 33  | 34  | 35  | 36  | 37  | 38  | 39  | 40  | 41  | 42  | 43  | 44  | 45  | 46  | 47  | 48  | 49  | 50  | 51  | 52  | 53  | 54  | 55  | 56  | 57  | 58  | 59  | 60  | 61  | 62  |     |
| 138 | 139 | 140 | 141 | 142 | 143 | 144 | 145 | 146 | 147 | 148 | 149 | 150 | 151 | 152 | 153 | 154 | 155 | 156 | 157 | 158 | 159 | 160 | 161 | 162 | 163 | 164 | 165 | 166 | 167 | 168 | 169 | 170 | 171 | 172 | 173 | 174 | 175 | 176 | 177 | 178 | 179 | 180 | 181 | 182 | 183 | 184 | 185 | 186 | 187 | 188 | 189 | 190 | 191 | 192 | 193 | 194 | 195 | 196 | 197 | 198 | 199 | 200 |

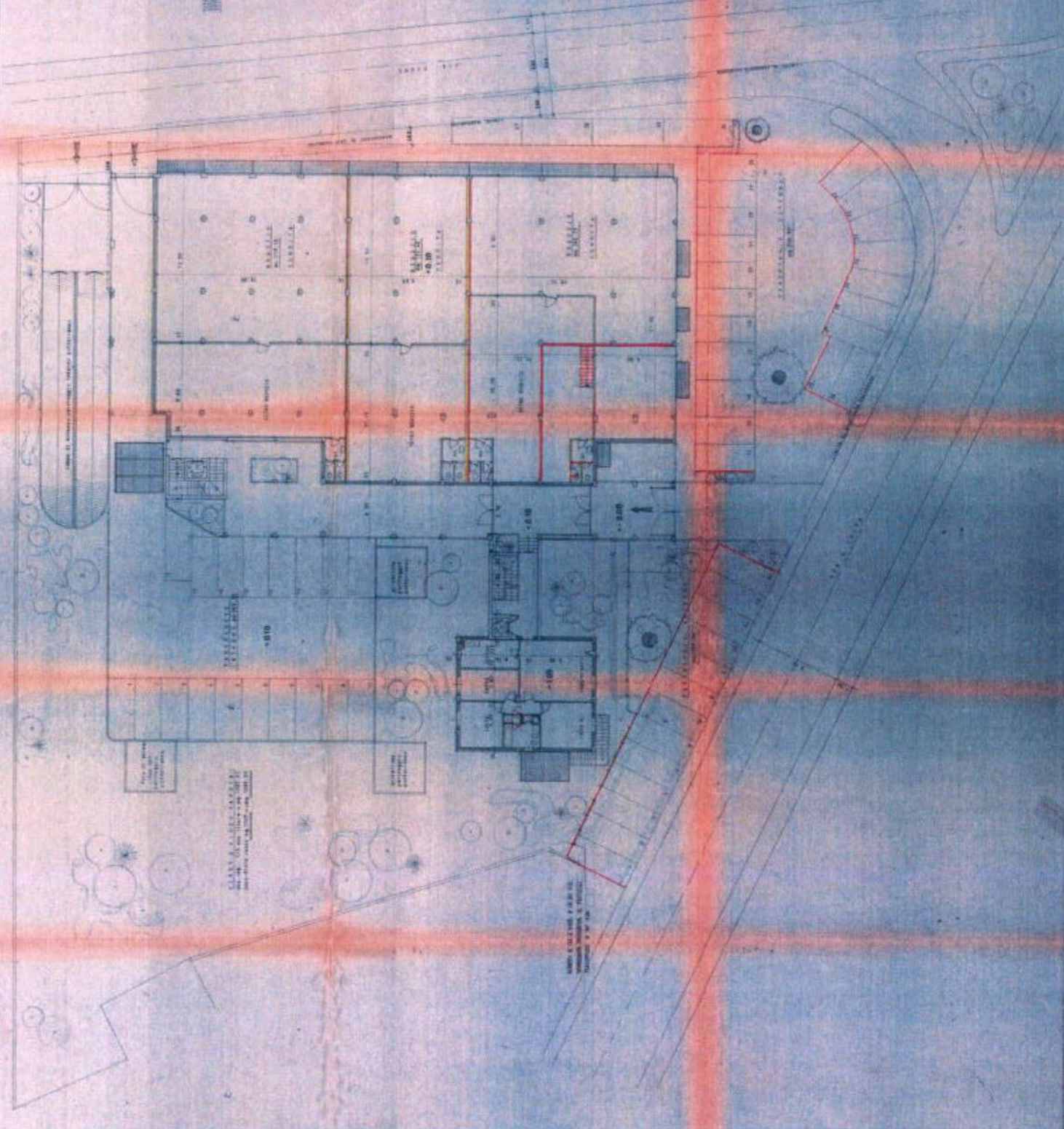






PROJEKTOWANIE I BUDOWA  
FABRYKI  
KRAKÓW, UL. ...

|     |     |       |     |             |     |
|-----|-----|-------|-----|-------------|-----|
| Lp. |     | Nazwa |     | Miejscowość |     |
| 1   | 1   | 1     | 1   | 1           | 1   |
| 2   | 2   | 2     | 2   | 2           | 2   |
| 3   | 3   | 3     | 3   | 3           | 3   |
| 4   | 4   | 4     | 4   | 4           | 4   |
| 5   | 5   | 5     | 5   | 5           | 5   |
| 6   | 6   | 6     | 6   | 6           | 6   |
| 7   | 7   | 7     | 7   | 7           | 7   |
| 8   | 8   | 8     | 8   | 8           | 8   |
| 9   | 9   | 9     | 9   | 9           | 9   |
| 10  | 10  | 10    | 10  | 10          | 10  |
| 11  | 11  | 11    | 11  | 11          | 11  |
| 12  | 12  | 12    | 12  | 12          | 12  |
| 13  | 13  | 13    | 13  | 13          | 13  |
| 14  | 14  | 14    | 14  | 14          | 14  |
| 15  | 15  | 15    | 15  | 15          | 15  |
| 16  | 16  | 16    | 16  | 16          | 16  |
| 17  | 17  | 17    | 17  | 17          | 17  |
| 18  | 18  | 18    | 18  | 18          | 18  |
| 19  | 19  | 19    | 19  | 19          | 19  |
| 20  | 20  | 20    | 20  | 20          | 20  |
| 21  | 21  | 21    | 21  | 21          | 21  |
| 22  | 22  | 22    | 22  | 22          | 22  |
| 23  | 23  | 23    | 23  | 23          | 23  |
| 24  | 24  | 24    | 24  | 24          | 24  |
| 25  | 25  | 25    | 25  | 25          | 25  |
| 26  | 26  | 26    | 26  | 26          | 26  |
| 27  | 27  | 27    | 27  | 27          | 27  |
| 28  | 28  | 28    | 28  | 28          | 28  |
| 29  | 29  | 29    | 29  | 29          | 29  |
| 30  | 30  | 30    | 30  | 30          | 30  |
| 31  | 31  | 31    | 31  | 31          | 31  |
| 32  | 32  | 32    | 32  | 32          | 32  |
| 33  | 33  | 33    | 33  | 33          | 33  |
| 34  | 34  | 34    | 34  | 34          | 34  |
| 35  | 35  | 35    | 35  | 35          | 35  |
| 36  | 36  | 36    | 36  | 36          | 36  |
| 37  | 37  | 37    | 37  | 37          | 37  |
| 38  | 38  | 38    | 38  | 38          | 38  |
| 39  | 39  | 39    | 39  | 39          | 39  |
| 40  | 40  | 40    | 40  | 40          | 40  |
| 41  | 41  | 41    | 41  | 41          | 41  |
| 42  | 42  | 42    | 42  | 42          | 42  |
| 43  | 43  | 43    | 43  | 43          | 43  |
| 44  | 44  | 44    | 44  | 44          | 44  |
| 45  | 45  | 45    | 45  | 45          | 45  |
| 46  | 46  | 46    | 46  | 46          | 46  |
| 47  | 47  | 47    | 47  | 47          | 47  |
| 48  | 48  | 48    | 48  | 48          | 48  |
| 49  | 49  | 49    | 49  | 49          | 49  |
| 50  | 50  | 50    | 50  | 50          | 50  |
| 51  | 51  | 51    | 51  | 51          | 51  |
| 52  | 52  | 52    | 52  | 52          | 52  |
| 53  | 53  | 53    | 53  | 53          | 53  |
| 54  | 54  | 54    | 54  | 54          | 54  |
| 55  | 55  | 55    | 55  | 55          | 55  |
| 56  | 56  | 56    | 56  | 56          | 56  |
| 57  | 57  | 57    | 57  | 57          | 57  |
| 58  | 58  | 58    | 58  | 58          | 58  |
| 59  | 59  | 59    | 59  | 59          | 59  |
| 60  | 60  | 60    | 60  | 60          | 60  |
| 61  | 61  | 61    | 61  | 61          | 61  |
| 62  | 62  | 62    | 62  | 62          | 62  |
| 63  | 63  | 63    | 63  | 63          | 63  |
| 64  | 64  | 64    | 64  | 64          | 64  |
| 65  | 65  | 65    | 65  | 65          | 65  |
| 66  | 66  | 66    | 66  | 66          | 66  |
| 67  | 67  | 67    | 67  | 67          | 67  |
| 68  | 68  | 68    | 68  | 68          | 68  |
| 69  | 69  | 69    | 69  | 69          | 69  |
| 70  | 70  | 70    | 70  | 70          | 70  |
| 71  | 71  | 71    | 71  | 71          | 71  |
| 72  | 72  | 72    | 72  | 72          | 72  |
| 73  | 73  | 73    | 73  | 73          | 73  |
| 74  | 74  | 74    | 74  | 74          | 74  |
| 75  | 75  | 75    | 75  | 75          | 75  |
| 76  | 76  | 76    | 76  | 76          | 76  |
| 77  | 77  | 77    | 77  | 77          | 77  |
| 78  | 78  | 78    | 78  | 78          | 78  |
| 79  | 79  | 79    | 79  | 79          | 79  |
| 80  | 80  | 80    | 80  | 80          | 80  |
| 81  | 81  | 81    | 81  | 81          | 81  |
| 82  | 82  | 82    | 82  | 82          | 82  |
| 83  | 83  | 83    | 83  | 83          | 83  |
| 84  | 84  | 84    | 84  | 84          | 84  |
| 85  | 85  | 85    | 85  | 85          | 85  |
| 86  | 86  | 86    | 86  | 86          | 86  |
| 87  | 87  | 87    | 87  | 87          | 87  |
| 88  | 88  | 88    | 88  | 88          | 88  |
| 89  | 89  | 89    | 89  | 89          | 89  |
| 90  | 90  | 90    | 90  | 90          | 90  |
| 91  | 91  | 91    | 91  | 91          | 91  |
| 92  | 92  | 92    | 92  | 92          | 92  |
| 93  | 93  | 93    | 93  | 93          | 93  |
| 94  | 94  | 94    | 94  | 94          | 94  |
| 95  | 95  | 95    | 95  | 95          | 95  |
| 96  | 96  | 96    | 96  | 96          | 96  |
| 97  | 97  | 97    | 97  | 97          | 97  |
| 98  | 98  | 98    | 98  | 98          | 98  |
| 99  | 99  | 99    | 99  | 99          | 99  |
| 100 | 100 | 100   | 100 | 100         | 100 |



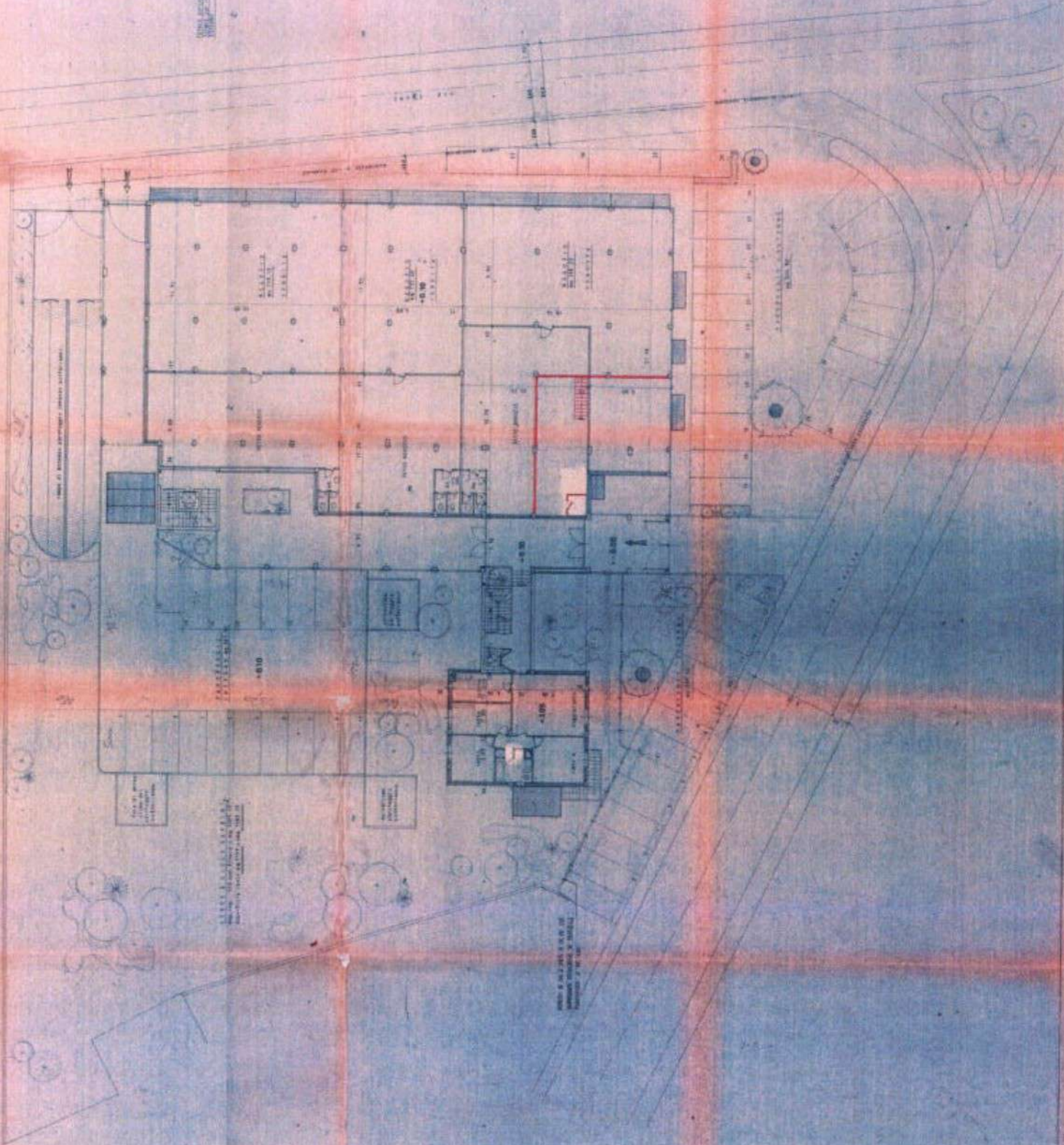
PROJEKTOWANIE I BUDOWA  
FABRYKI  
KRAKÓW, UL. ...

PROJEKTOWANIE I BUDOWA  
FABRYKI  
KRAKÓW, UL. ...

PROYECTO DE CONSTRUCCION DE UN  
EDIFICIO DE OFICINAS EN  
LA CALLE DE LA PAZ, N.º 100, DE  
MADRID.

00

| NO. | DESCRIPCION           | FECHA      |
|-----|-----------------------|------------|
| 1   | PROYECTO PRELIMINAR   | 15/10/1928 |
| 2   | PROYECTO DEFINITIVO   | 15/10/1928 |
| 3   | PROYECTO DE EJECUCION | 15/10/1928 |
| 4   | PROYECTO DE EJECUCION | 15/10/1928 |
| 5   | PROYECTO DE EJECUCION | 15/10/1928 |
| 6   | PROYECTO DE EJECUCION | 15/10/1928 |
| 7   | PROYECTO DE EJECUCION | 15/10/1928 |
| 8   | PROYECTO DE EJECUCION | 15/10/1928 |
| 9   | PROYECTO DE EJECUCION | 15/10/1928 |
| 10  | PROYECTO DE EJECUCION | 15/10/1928 |

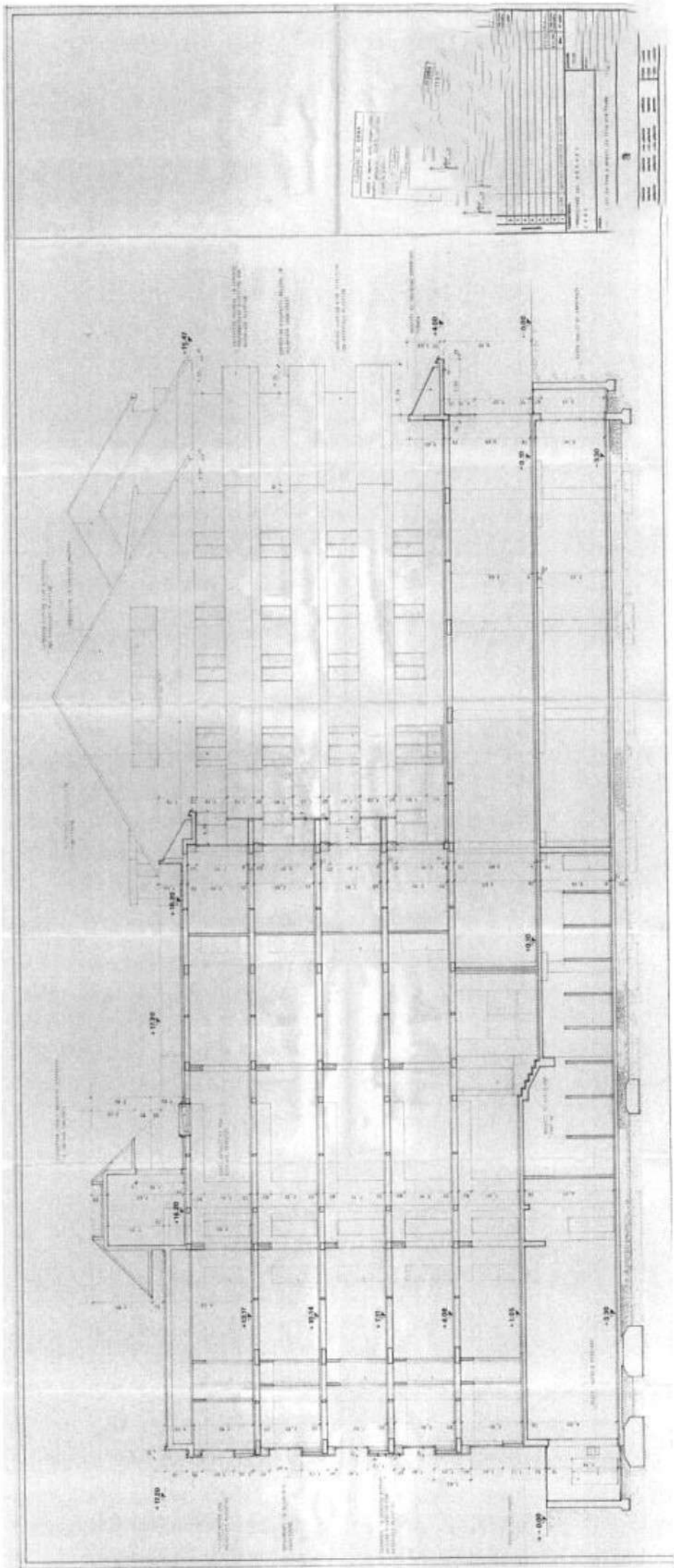


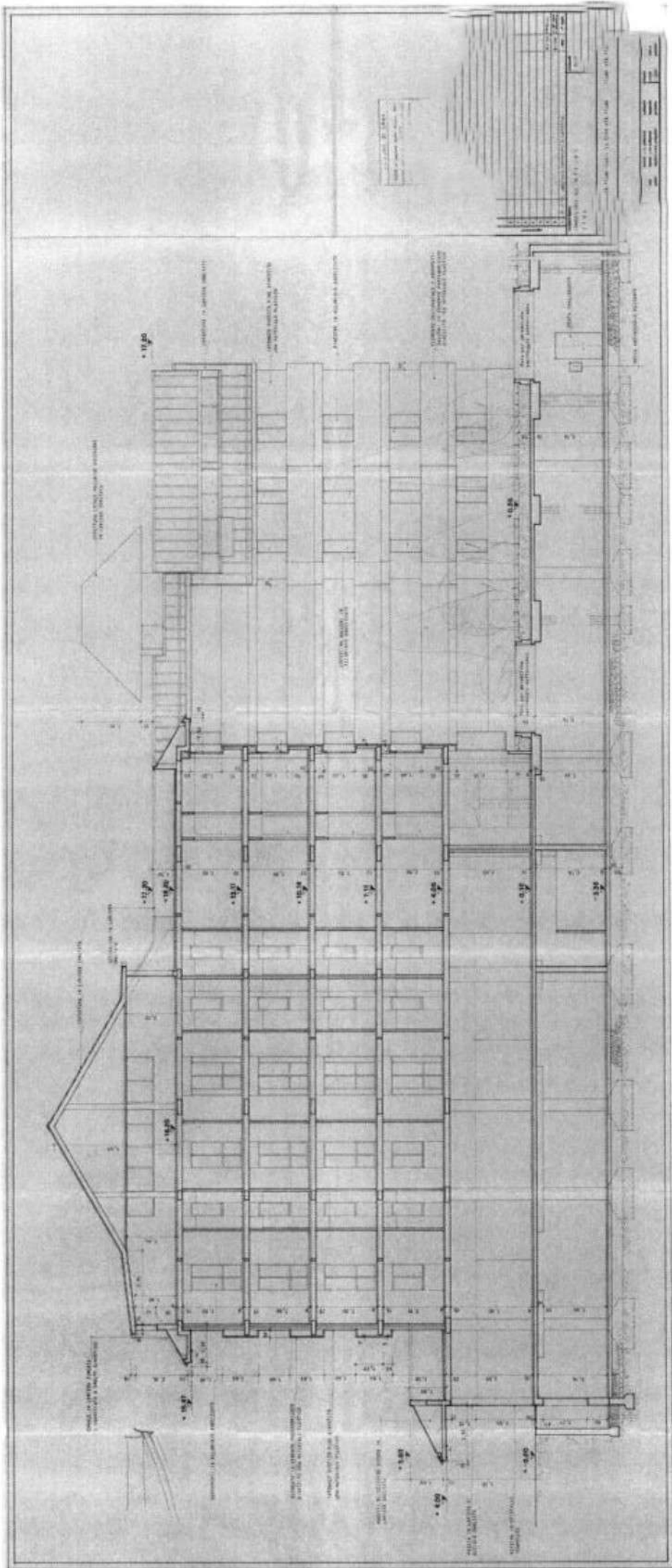
PROYECTO DE CONSTRUCCION DE UN  
EDIFICIO DE OFICINAS EN  
LA CALLE DE LA PAZ, N.º 100, DE  
MADRID.

PROYECTO DE CONSTRUCCION DE UN  
EDIFICIO DE OFICINAS EN  
LA CALLE DE LA PAZ, N.º 100, DE  
MADRID.

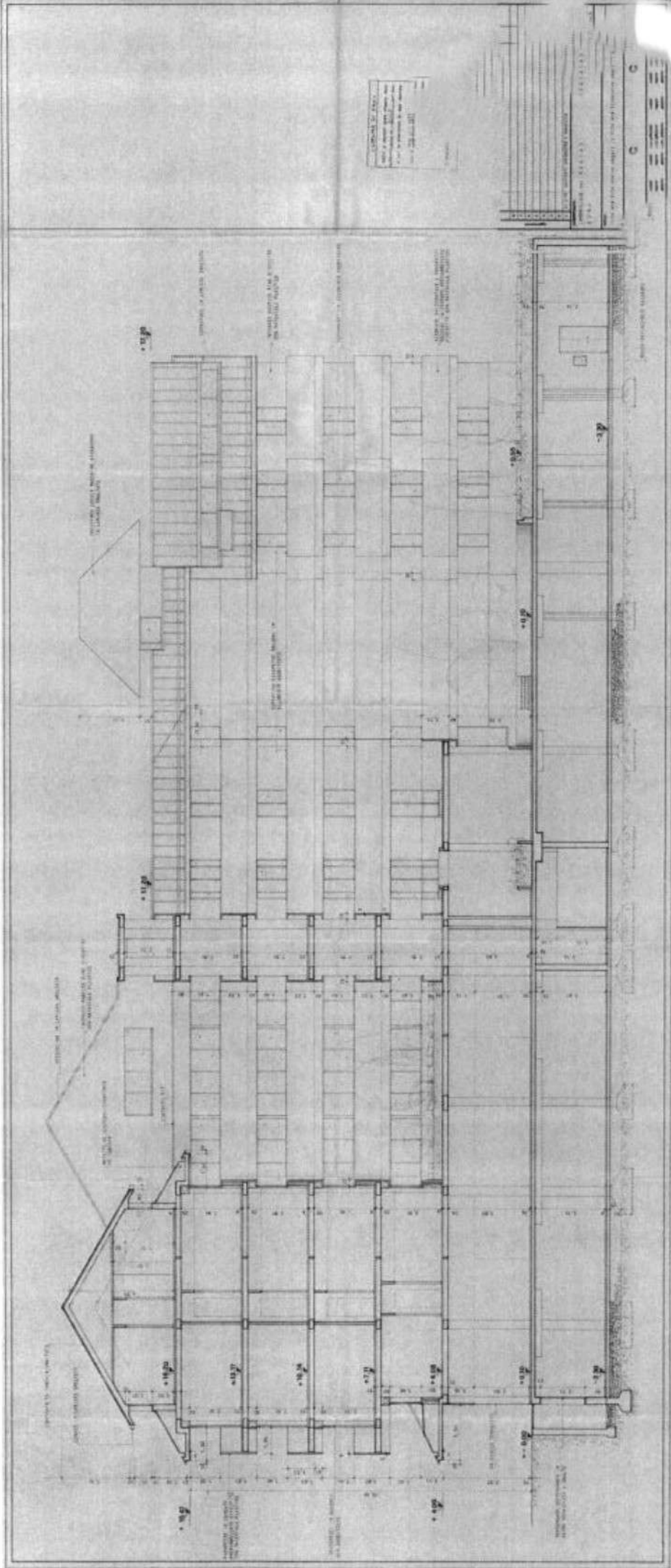








| NO. | DESCRIPTION      | DATE     |
|-----|------------------|----------|
| 1   | PRELIMINARY PLAN | 10/1/58  |
| 2   | REVISION         | 10/15/58 |
| 3   | REVISION         | 11/1/58  |
| 4   | REVISION         | 11/15/58 |
| 5   | REVISION         | 12/1/58  |
| 6   | REVISION         | 12/15/58 |
| 7   | REVISION         | 1/1/59   |
| 8   | REVISION         | 1/15/59  |
| 9   | REVISION         | 2/1/59   |
| 10  | REVISION         | 2/15/59  |
| 11  | REVISION         | 3/1/59   |
| 12  | REVISION         | 3/15/59  |
| 13  | REVISION         | 4/1/59   |
| 14  | REVISION         | 4/15/59  |
| 15  | REVISION         | 5/1/59   |
| 16  | REVISION         | 5/15/59  |
| 17  | REVISION         | 6/1/59   |
| 18  | REVISION         | 6/15/59  |
| 19  | REVISION         | 7/1/59   |
| 20  | REVISION         | 7/15/59  |
| 21  | REVISION         | 8/1/59   |
| 22  | REVISION         | 8/15/59  |
| 23  | REVISION         | 9/1/59   |
| 24  | REVISION         | 9/15/59  |
| 25  | REVISION         | 10/1/59  |
| 26  | REVISION         | 10/15/59 |
| 27  | REVISION         | 11/1/59  |
| 28  | REVISION         | 11/15/59 |
| 29  | REVISION         | 12/1/59  |
| 30  | REVISION         | 12/15/59 |
| 31  | REVISION         | 1/1/60   |
| 32  | REVISION         | 1/15/60  |
| 33  | REVISION         | 2/1/60   |
| 34  | REVISION         | 2/15/60  |
| 35  | REVISION         | 3/1/60   |
| 36  | REVISION         | 3/15/60  |
| 37  | REVISION         | 4/1/60   |
| 38  | REVISION         | 4/15/60  |
| 39  | REVISION         | 5/1/60   |
| 40  | REVISION         | 5/15/60  |
| 41  | REVISION         | 6/1/60   |
| 42  | REVISION         | 6/15/60  |
| 43  | REVISION         | 7/1/60   |
| 44  | REVISION         | 7/15/60  |
| 45  | REVISION         | 8/1/60   |
| 46  | REVISION         | 8/15/60  |
| 47  | REVISION         | 9/1/60   |
| 48  | REVISION         | 9/15/60  |
| 49  | REVISION         | 10/1/60  |
| 50  | REVISION         | 10/15/60 |
| 51  | REVISION         | 11/1/60  |
| 52  | REVISION         | 11/15/60 |
| 53  | REVISION         | 12/1/60  |
| 54  | REVISION         | 12/15/60 |
| 55  | REVISION         | 1/1/61   |
| 56  | REVISION         | 1/15/61  |
| 57  | REVISION         | 2/1/61   |
| 58  | REVISION         | 2/15/61  |
| 59  | REVISION         | 3/1/61   |
| 60  | REVISION         | 3/15/61  |
| 61  | REVISION         | 4/1/61   |
| 62  | REVISION         | 4/15/61  |
| 63  | REVISION         | 5/1/61   |
| 64  | REVISION         | 5/15/61  |
| 65  | REVISION         | 6/1/61   |
| 66  | REVISION         | 6/15/61  |
| 67  | REVISION         | 7/1/61   |
| 68  | REVISION         | 7/15/61  |
| 69  | REVISION         | 8/1/61   |
| 70  | REVISION         | 8/15/61  |
| 71  | REVISION         | 9/1/61   |
| 72  | REVISION         | 9/15/61  |
| 73  | REVISION         | 10/1/61  |
| 74  | REVISION         | 10/15/61 |
| 75  | REVISION         | 11/1/61  |
| 76  | REVISION         | 11/15/61 |
| 77  | REVISION         | 12/1/61  |
| 78  | REVISION         | 12/15/61 |
| 79  | REVISION         | 1/1/62   |
| 80  | REVISION         | 1/15/62  |
| 81  | REVISION         | 2/1/62   |
| 82  | REVISION         | 2/15/62  |
| 83  | REVISION         | 3/1/62   |
| 84  | REVISION         | 3/15/62  |
| 85  | REVISION         | 4/1/62   |
| 86  | REVISION         | 4/15/62  |
| 87  | REVISION         | 5/1/62   |
| 88  | REVISION         | 5/15/62  |
| 89  | REVISION         | 6/1/62   |
| 90  | REVISION         | 6/15/62  |
| 91  | REVISION         | 7/1/62   |
| 92  | REVISION         | 7/15/62  |
| 93  | REVISION         | 8/1/62   |
| 94  | REVISION         | 8/15/62  |
| 95  | REVISION         | 9/1/62   |
| 96  | REVISION         | 9/15/62  |
| 97  | REVISION         | 10/1/62  |
| 98  | REVISION         | 10/15/62 |
| 99  | REVISION         | 11/1/62  |
| 100 | REVISION         | 11/15/62 |
| 101 | REVISION         | 12/1/62  |
| 102 | REVISION         | 12/15/62 |
| 103 | REVISION         | 1/1/63   |
| 104 | REVISION         | 1/15/63  |
| 105 | REVISION         | 2/1/63   |
| 106 | REVISION         | 2/15/63  |
| 107 | REVISION         | 3/1/63   |
| 108 | REVISION         | 3/15/63  |
| 109 | REVISION         | 4/1/63   |
| 110 | REVISION         | 4/15/63  |
| 111 | REVISION         | 5/1/63   |
| 112 | REVISION         | 5/15/63  |
| 113 | REVISION         | 6/1/63   |
| 114 | REVISION         | 6/15/63  |
| 115 | REVISION         | 7/1/63   |
| 116 | REVISION         | 7/15/63  |
| 117 | REVISION         | 8/1/63   |
| 118 | REVISION         | 8/15/63  |
| 119 | REVISION         | 9/1/63   |
| 120 | REVISION         | 9/15/63  |
| 121 | REVISION         | 10/1/63  |
| 122 | REVISION         | 10/15/63 |
| 123 | REVISION         | 11/1/63  |
| 124 | REVISION         | 11/15/63 |
| 125 | REVISION         | 12/1/63  |
| 126 | REVISION         | 12/15/63 |
| 127 | REVISION         | 1/1/64   |
| 128 | REVISION         | 1/15/64  |
| 129 | REVISION         | 2/1/64   |
| 130 | REVISION         | 2/15/64  |
| 131 | REVISION         | 3/1/64   |
| 132 | REVISION         | 3/15/64  |
| 133 | REVISION         | 4/1/64   |
| 134 | REVISION         | 4/15/64  |
| 135 | REVISION         | 5/1/64   |
| 136 | REVISION         | 5/15/64  |
| 137 | REVISION         | 6/1/64   |
| 138 | REVISION         | 6/15/64  |
| 139 | REVISION         | 7/1/64   |
| 140 | REVISION         | 7/15/64  |
| 141 | REVISION         | 8/1/64   |
| 142 | REVISION         | 8/15/64  |
| 143 | REVISION         | 9/1/64   |
| 144 | REVISION         | 9/15/64  |
| 145 | REVISION         | 10/1/64  |
| 146 | REVISION         | 10/15/64 |
| 147 | REVISION         | 11/1/64  |
| 148 | REVISION         | 11/15/64 |
| 149 | REVISION         | 12/1/64  |
| 150 | REVISION         | 12/15/64 |
| 151 | REVISION         | 1/1/65   |
| 152 | REVISION         | 1/15/65  |
| 153 | REVISION         | 2/1/65   |
| 154 | REVISION         | 2/15/65  |
| 155 | REVISION         | 3/1/65   |
| 156 | REVISION         | 3/15/65  |
| 157 | REVISION         | 4/1/65   |
| 158 | REVISION         | 4/15/65  |
| 159 | REVISION         | 5/1/65   |
| 160 | REVISION         | 5/15/65  |
| 161 | REVISION         | 6/1/65   |
| 162 | REVISION         | 6/15/65  |
| 163 | REVISION         | 7/1/65   |
| 164 | REVISION         | 7/15/65  |
| 165 | REVISION         | 8/1/65   |
| 166 | REVISION         | 8/15/65  |
| 167 | REVISION         | 9/1/65   |
| 168 | REVISION         | 9/15/65  |
| 169 | REVISION         | 10/1/65  |
| 170 | REVISION         | 10/15/65 |
| 171 | REVISION         | 11/1/65  |
| 172 | REVISION         | 11/15/65 |
| 173 | REVISION         | 12/1/65  |
| 174 | REVISION         | 12/15/65 |
| 175 | REVISION         | 1/1/66   |
| 176 | REVISION         | 1/15/66  |
| 177 | REVISION         | 2/1/66   |
| 178 | REVISION         | 2/15/66  |
| 179 | REVISION         | 3/1/66   |
| 180 | REVISION         | 3/15/66  |
| 181 | REVISION         | 4/1/66   |
| 182 | REVISION         | 4/15/66  |
| 183 | REVISION         | 5/1/66   |
| 184 | REVISION         | 5/15/66  |
| 185 | REVISION         | 6/1/66   |
| 186 | REVISION         | 6/15/66  |
| 187 | REVISION         | 7/1/66   |
| 188 | REVISION         | 7/15/66  |
| 189 | REVISION         | 8/1/66   |
| 190 | REVISION         | 8/15/66  |
| 191 | REVISION         | 9/1/66   |
| 192 | REVISION         | 9/15/66  |
| 193 | REVISION         | 10/1/66  |
| 194 | REVISION         | 10/15/66 |
| 195 | REVISION         | 11/1/66  |
| 196 | REVISION         | 11/15/66 |
| 197 | REVISION         | 12/1/66  |
| 198 | REVISION         | 12/15/66 |
| 199 | REVISION         | 1/1/67   |
| 200 | REVISION         | 1/15/67  |



1. ALL DIMENSIONS TO FACE UNLESS OTHERWISE NOTED.  
 2. ALL WALLS TO BE CONCRETE UNLESS OTHERWISE NOTED.  
 3. ALL FLOORS TO BE CONCRETE UNLESS OTHERWISE NOTED.  
 4. ALL ROOFS TO BE FLAT UNLESS OTHERWISE NOTED.  
 5. ALL CEILING TO BE PLASTER UNLESS OTHERWISE NOTED.  
 6. ALL DOORS TO BE 30" WIDE UNLESS OTHERWISE NOTED.  
 7. ALL WINDOWS TO BE 30" WIDE UNLESS OTHERWISE NOTED.  
 8. ALL STAIRS TO BE 36" WIDE UNLESS OTHERWISE NOTED.  
 9. ALL ELEVATIONS TO BE TO FINISH UNLESS OTHERWISE NOTED.  
 10. ALL NOTES TO BE TO SCALE UNLESS OTHERWISE NOTED.  
 11. ALL NOTES TO BE TO SCALE UNLESS OTHERWISE NOTED.  
 12. ALL NOTES TO BE TO SCALE UNLESS OTHERWISE NOTED.  
 13. ALL NOTES TO BE TO SCALE UNLESS OTHERWISE NOTED.  
 14. ALL NOTES TO BE TO SCALE UNLESS OTHERWISE NOTED.  
 15. ALL NOTES TO BE TO SCALE UNLESS OTHERWISE NOTED.  
 16. ALL NOTES TO BE TO SCALE UNLESS OTHERWISE NOTED.  
 17. ALL NOTES TO BE TO SCALE UNLESS OTHERWISE NOTED.  
 18. ALL NOTES TO BE TO SCALE UNLESS OTHERWISE NOTED.  
 19. ALL NOTES TO BE TO SCALE UNLESS OTHERWISE NOTED.  
 20. ALL NOTES TO BE TO SCALE UNLESS OTHERWISE NOTED.

| NO. | DESCRIPTION | DATE |
|-----|-------------|------|
| 1   | ...         | ...  |
| 2   | ...         | ...  |
| 3   | ...         | ...  |
| 4   | ...         | ...  |
| 5   | ...         | ...  |
| 6   | ...         | ...  |
| 7   | ...         | ...  |
| 8   | ...         | ...  |
| 9   | ...         | ...  |
| 10  | ...         | ...  |
| 11  | ...         | ...  |
| 12  | ...         | ...  |
| 13  | ...         | ...  |
| 14  | ...         | ...  |
| 15  | ...         | ...  |
| 16  | ...         | ...  |
| 17  | ...         | ...  |
| 18  | ...         | ...  |
| 19  | ...         | ...  |
| 20  | ...         | ...  |