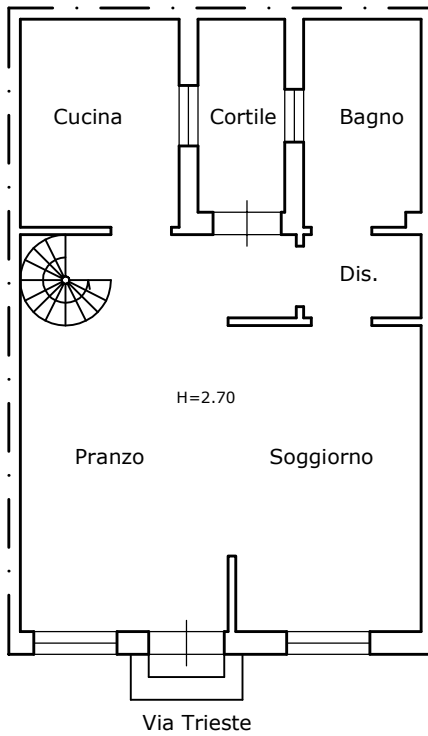


PLANIMETRIA ILLUSTRATIVA
scala 1:100

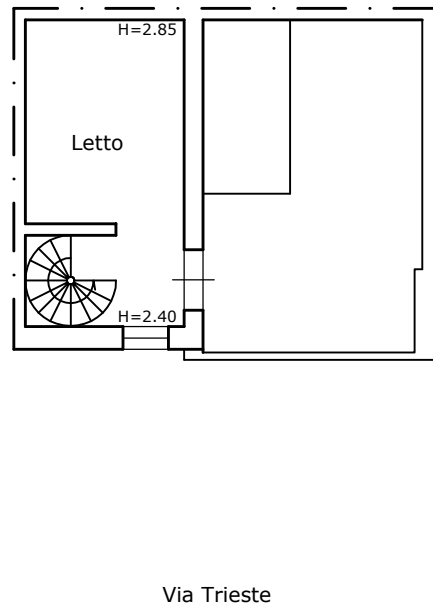
Comune di Olbia - Foglio 30 Mappale 237 sub 1

PIANO TERRA



Superficie UTILE	Mq 36.90
Superficie COPERTA	Mq 44.80
Superficie CORTILE	Mq 2.95

PIANO PRIMO



Superficie UTILE	Mq 7.40
Superficie COPERTA	Mq 11.30
Superficie TERRAZZO	Mq 10.00