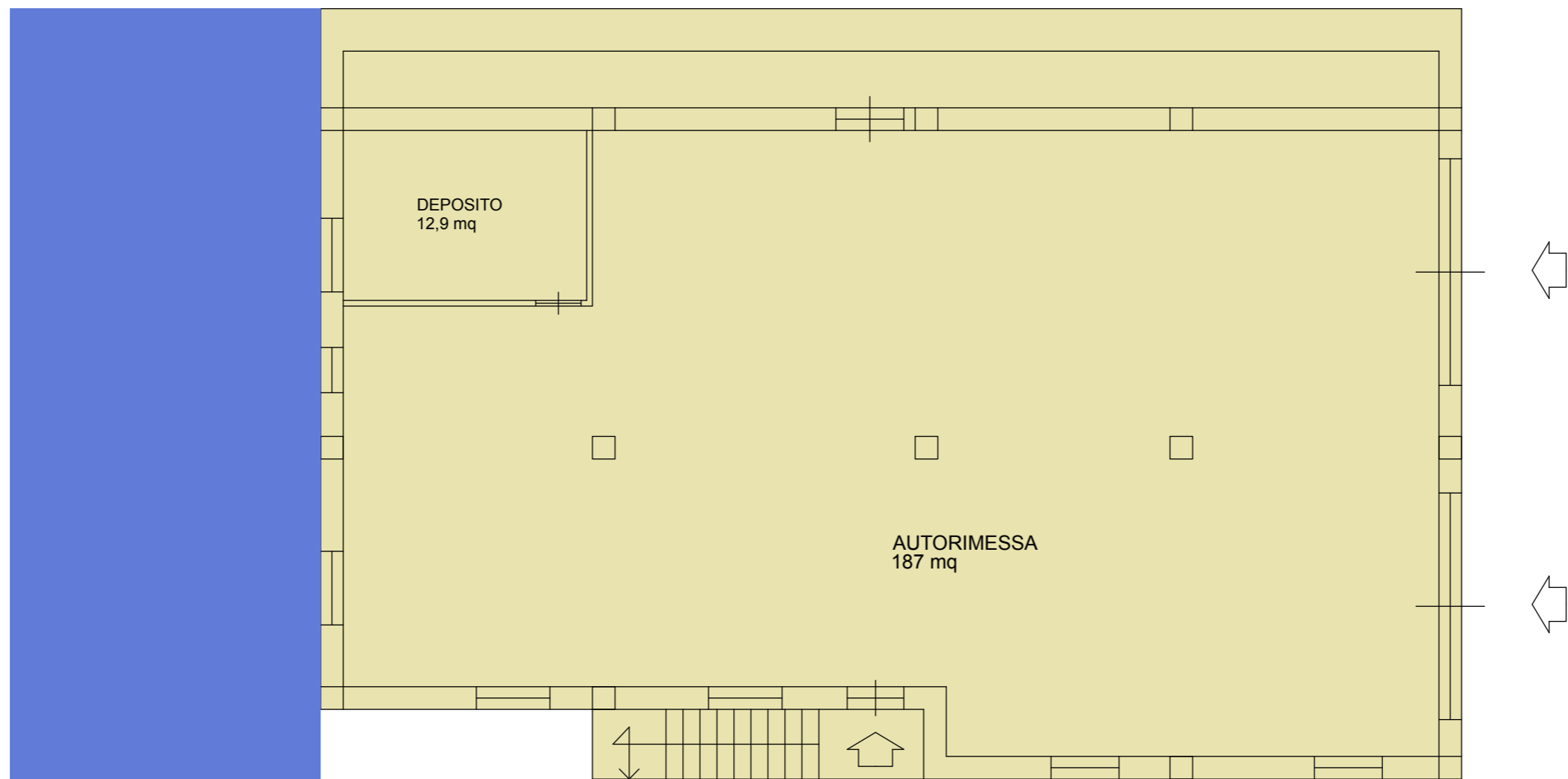
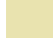










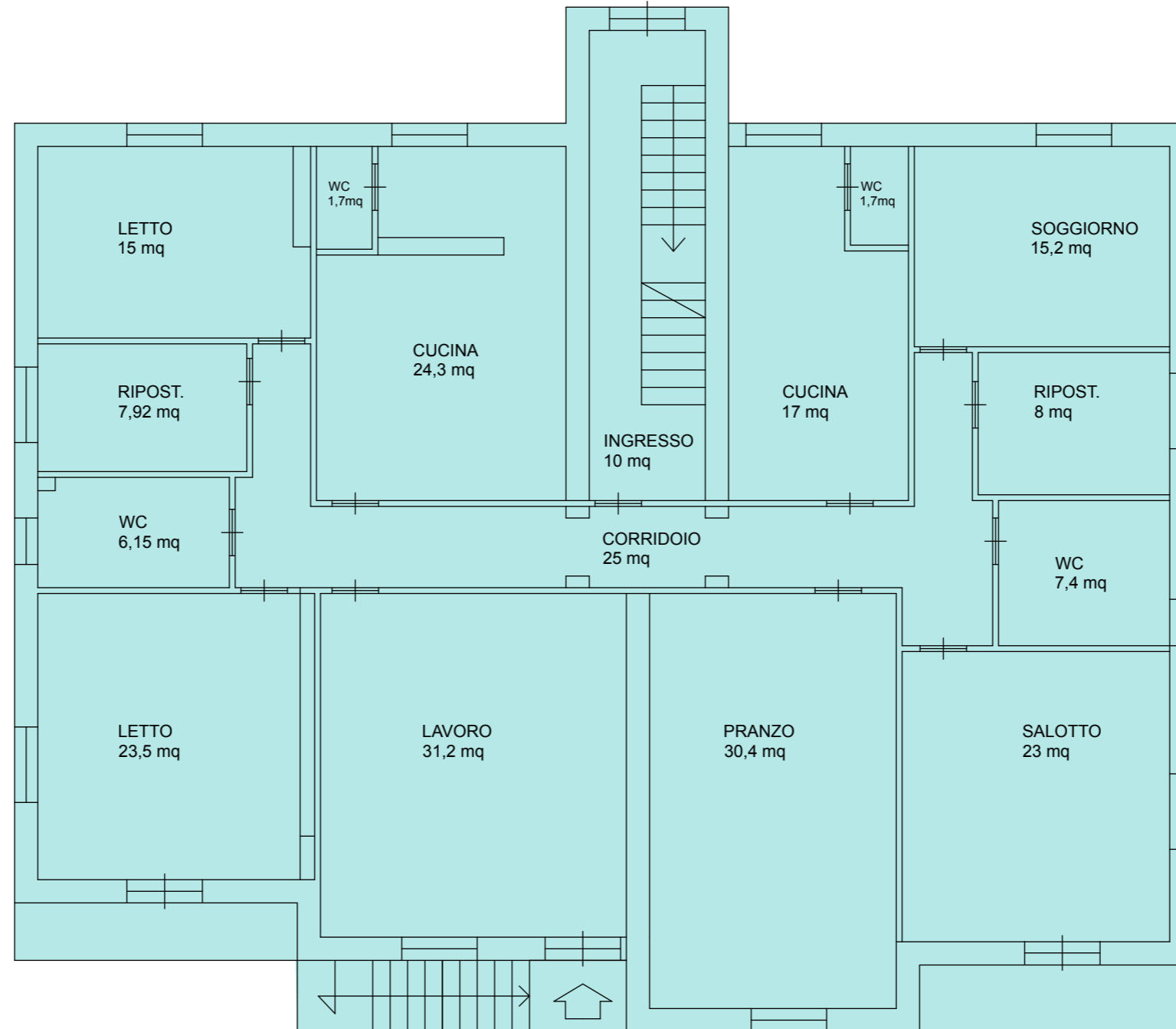
H 3,65 m



- | | | |
|--|--|--|
|  F.91 P.672 SUB.1 |  F.91 P.673 SUB.4 |  TERRENO PARTICELLA 373 |
|  F.91 P.672 SUB.2 |  F.91 P.672 SUB.4 | |
|  F.91 P.672 SUB.3 |  F.91 P.673 SUB.6 | |



H: 3 m



F.91 P.672 SUB.1



F.91 P.673 SUB.4



TERRENO PARTICELLA 373



F.91 P.672 SUB.2



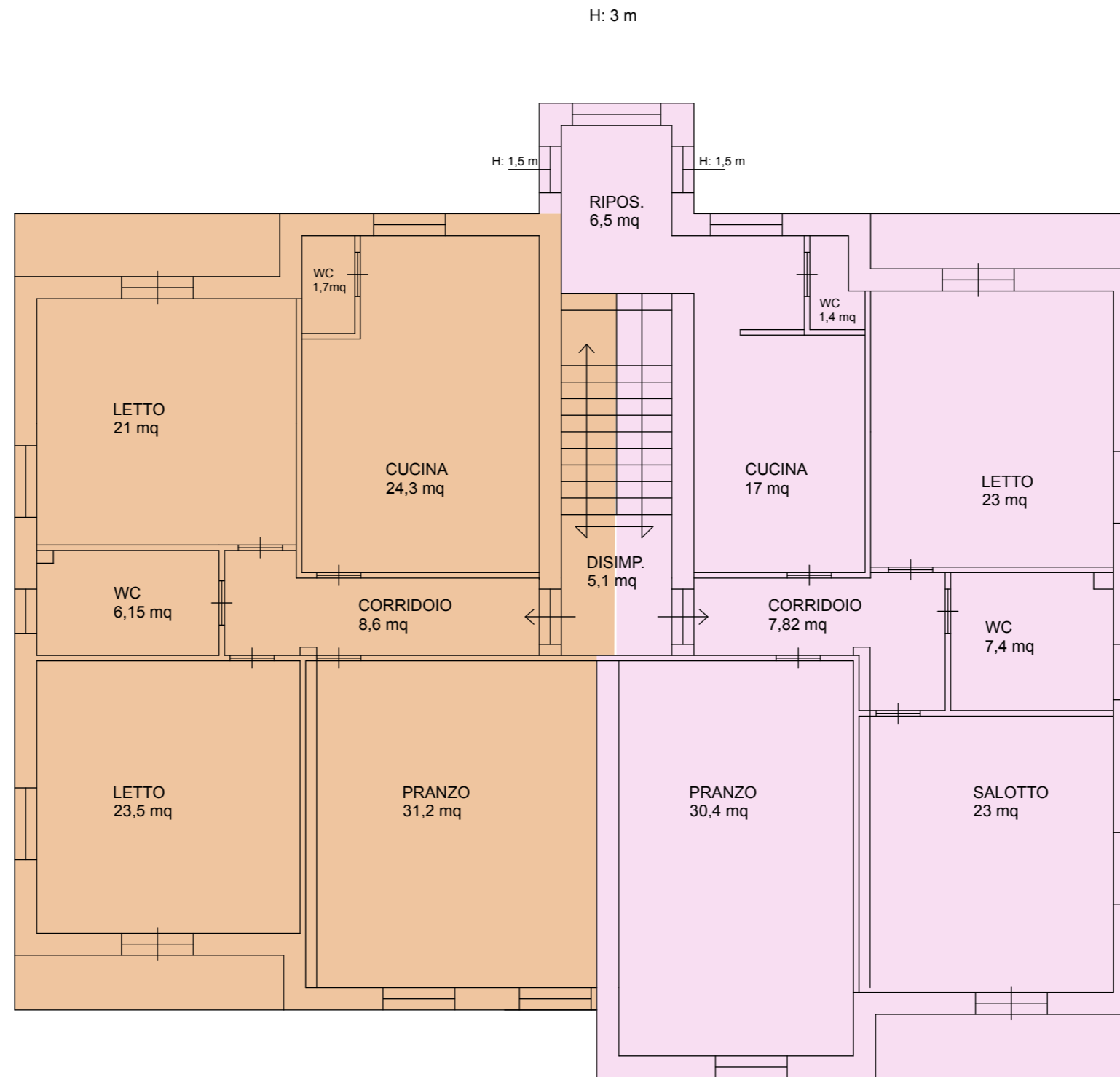
F.91 P.672 SUB.4



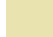






F.91 P.672 SUB.3

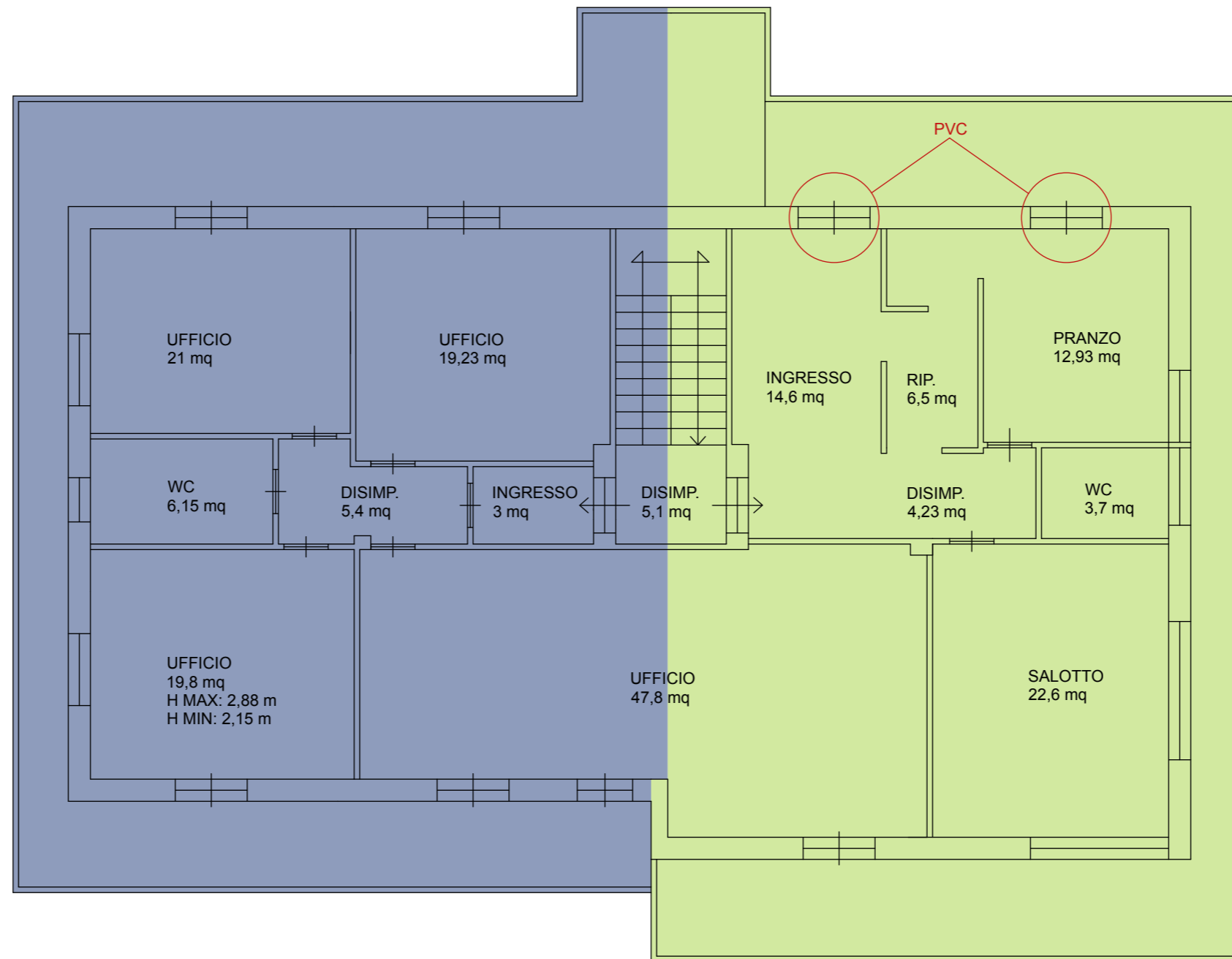


F.91 P.673 SUB.6










IMPIANTO NON A NORMA
TERMICO VECCHIO

- | | | |
|--|--|--|
|  F.91 P.672 SUB.1 |  F.91 P.673 SUB.4 |  TERRENO PARTICELLA 373 |
|  F.91 P.672 SUB.2 |  F.91 P.672 SUB.4 | |
|  F.91 P.672 SUB.3 |  F.91 P.673 SUB.6 | |



VENTILCONVETTORI A METANO
FINESTRE NUOVE IN PVC

SENZA RISCALDAMENTO
2 INFISSI IN PVC
INFISSI IN LEGNO VECCHI

- | | | | | | |
|---|------------------|---|------------------|---|------------------------|
|  | F.91 P.672 SUB.1 |  | F.91 P.673 SUB.4 |  | TERRENO PARTICELLA 373 |
|  | F.91 P.672 SUB.2 |  | F.91 P.672 SUB.4 | | |
|  | F.91 P.672 SUB.3 |  | F.91 P.673 SUB.6 | | |