

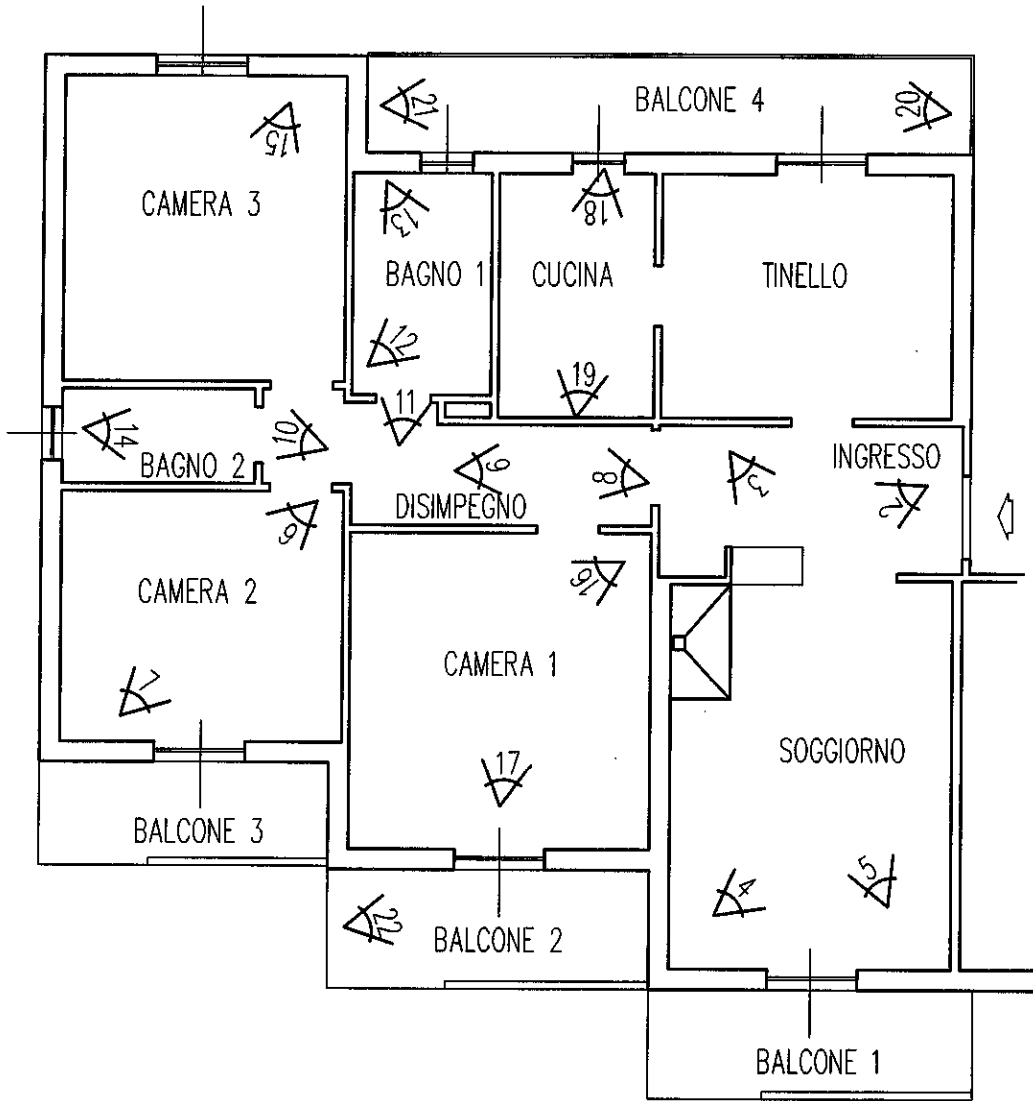
GASPARE CANINO
architetto

ALLEGATO III

Documentazione fotografica appartamento, garage e orto-giardino con schemi con individuazione dei punti di vista fotografici

Via Pisana 75/r Firenze 50143 Tel.055/2280381-3355433822
C.F. CNN GPR 51C02 L331F P.I. 02092530480
gaspere.canino@libero.it gaspere.canino@pec.architettifirenze.it

APPARTAMENTO CIVILE ABITAZIONE Piazza Salvador Allende n. 2 secondo piano
Punti di vista fotografici



DOCUMENTAZIONE FOTOGRAFICA ALLEGATA ALLA RELAZIONE
DELL'ESECUZIONE IMMOBILIARE RG 202/2025

APPARTAMENTO



FOTO 1

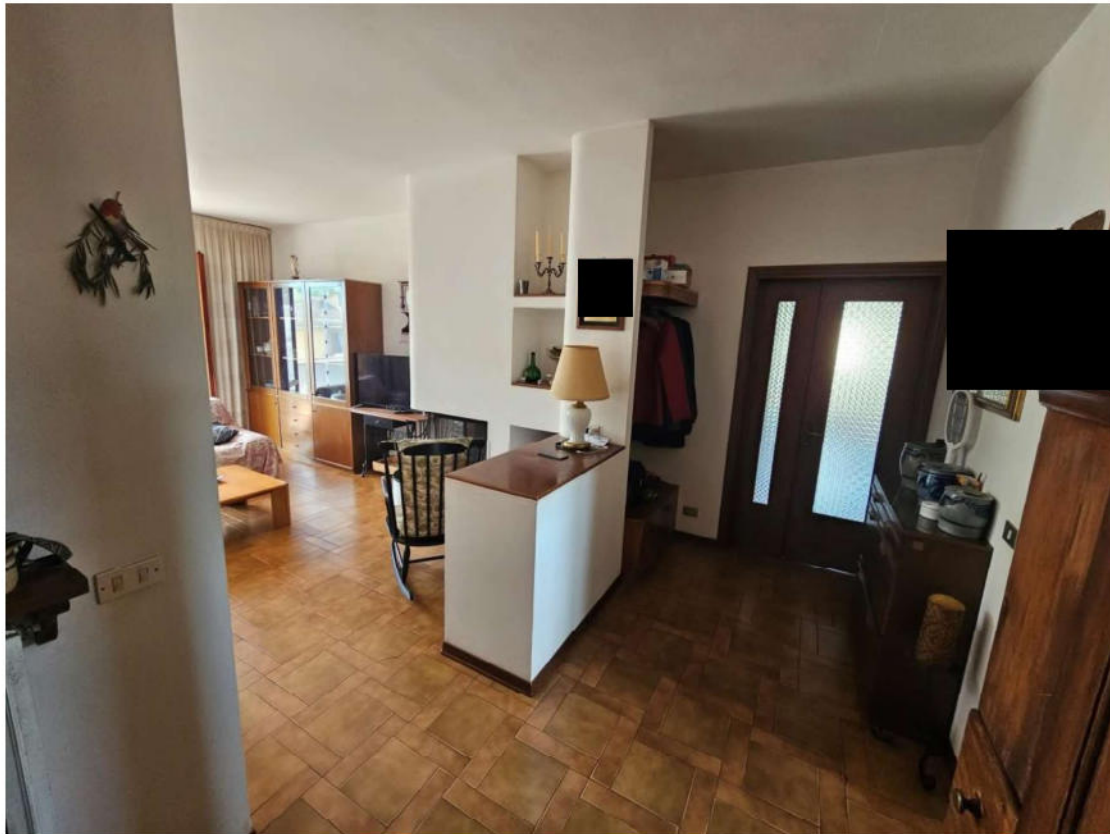


FOTO 2

FOTO 3





FOTO 4

FOTO 5





FOTO 6

FOTO 7



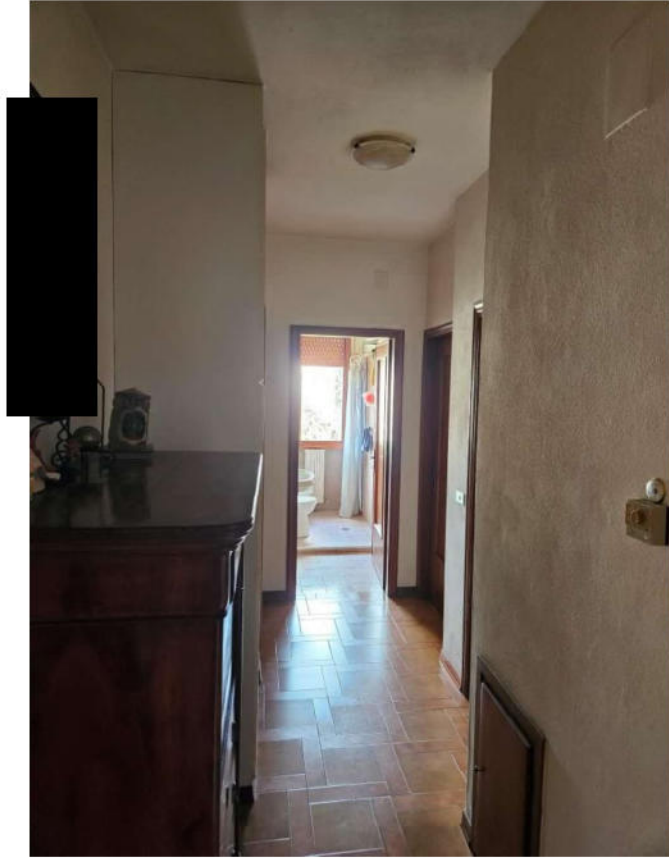


FOTO 8

FOTO 9

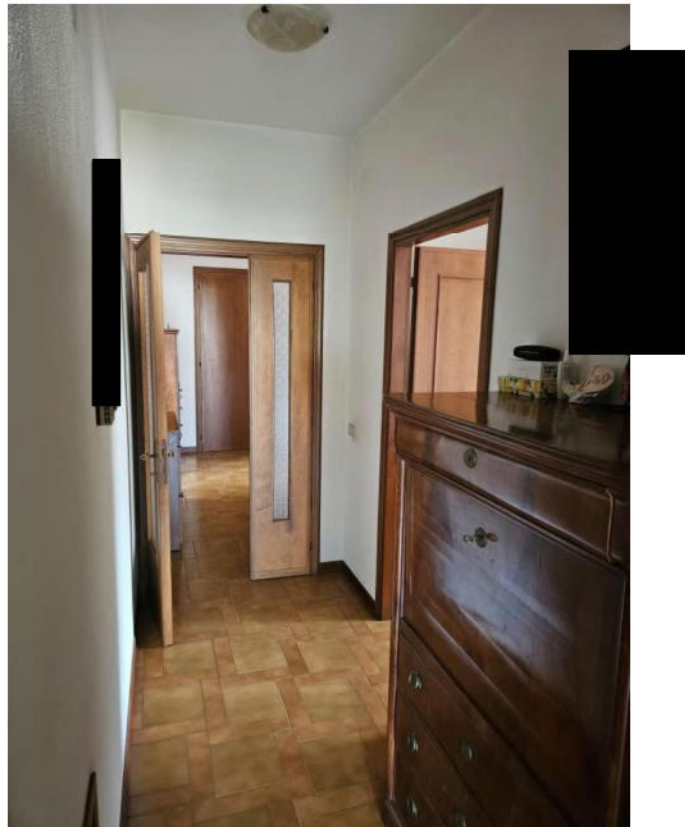




FOTO 10

FOTO 11





FOTO 12

FOTO 13

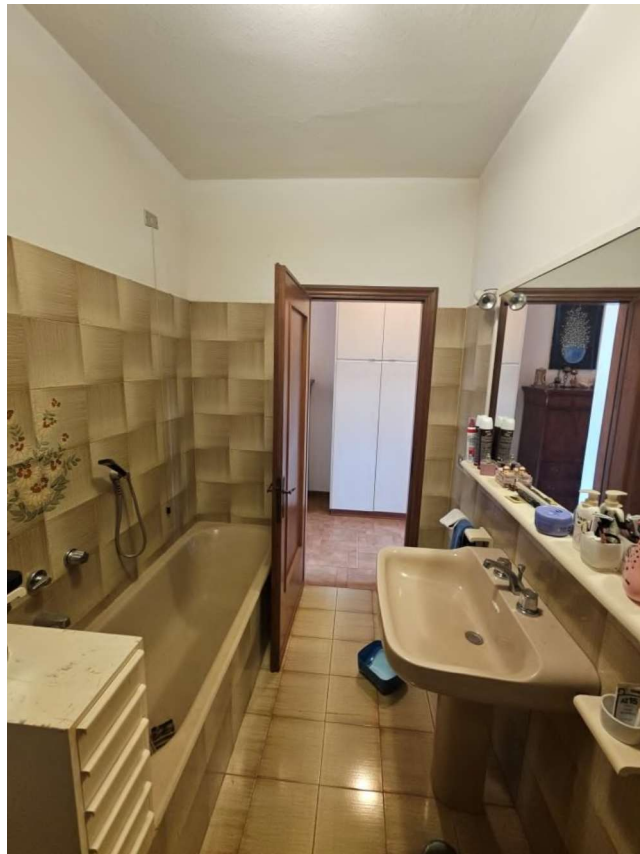




FOTO 14

FOTO 15





FOTO 16

FOTO 17





FOTO 18

FOTO 19

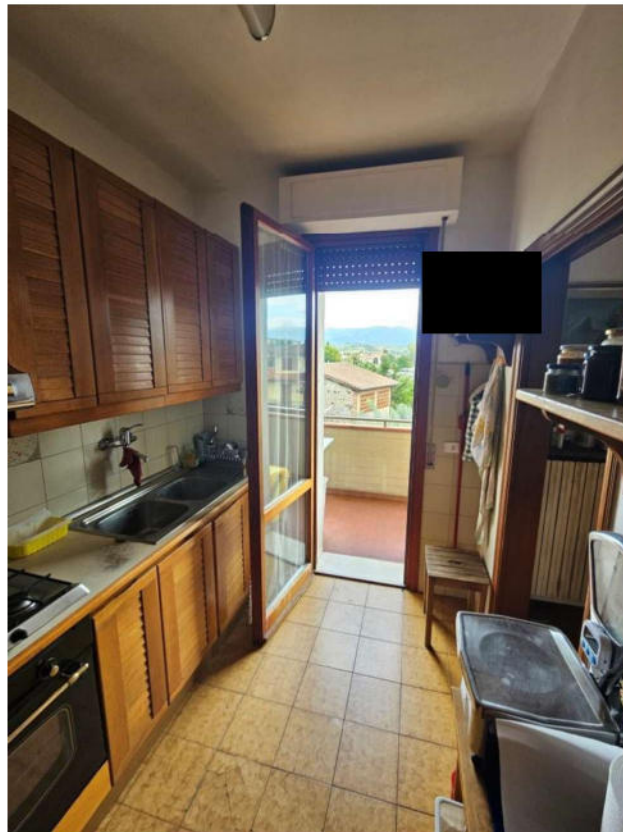




FOTO 20

FOTO 21



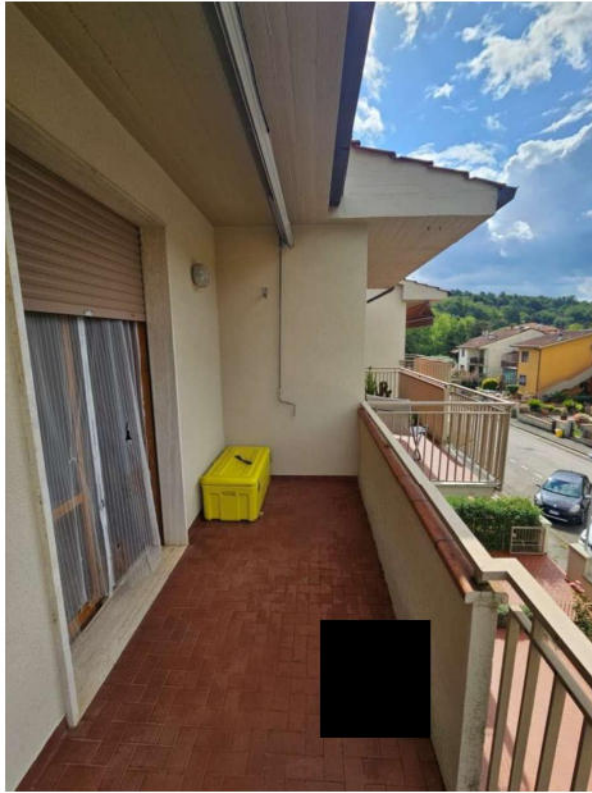
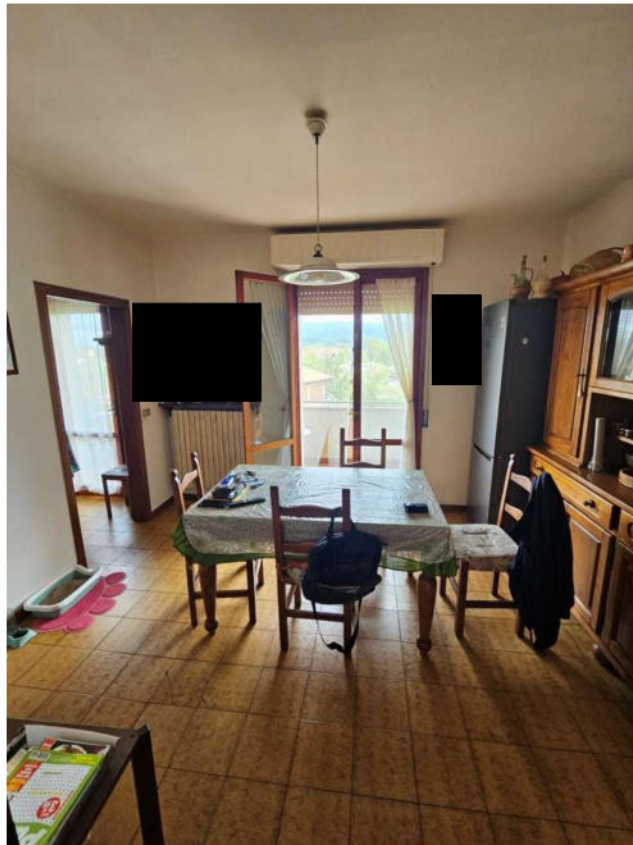


FOTO 22

FOTO 23



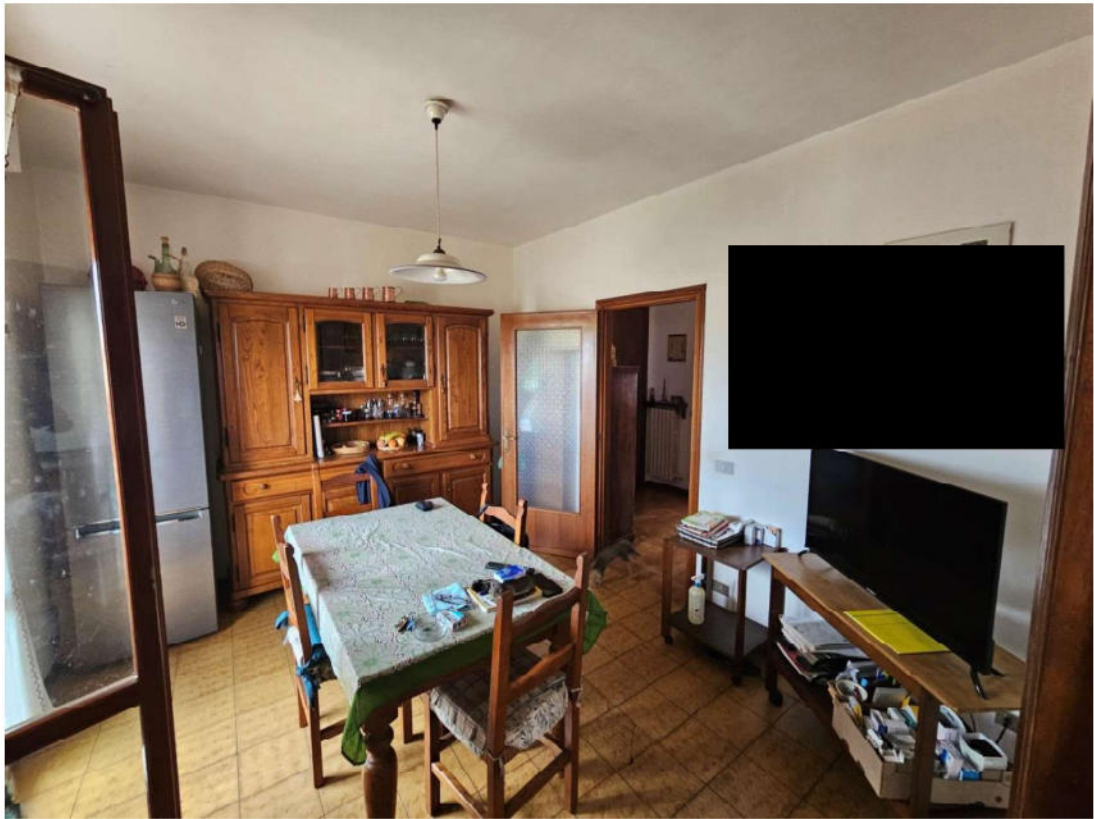


FOTO 24

FOTO 25

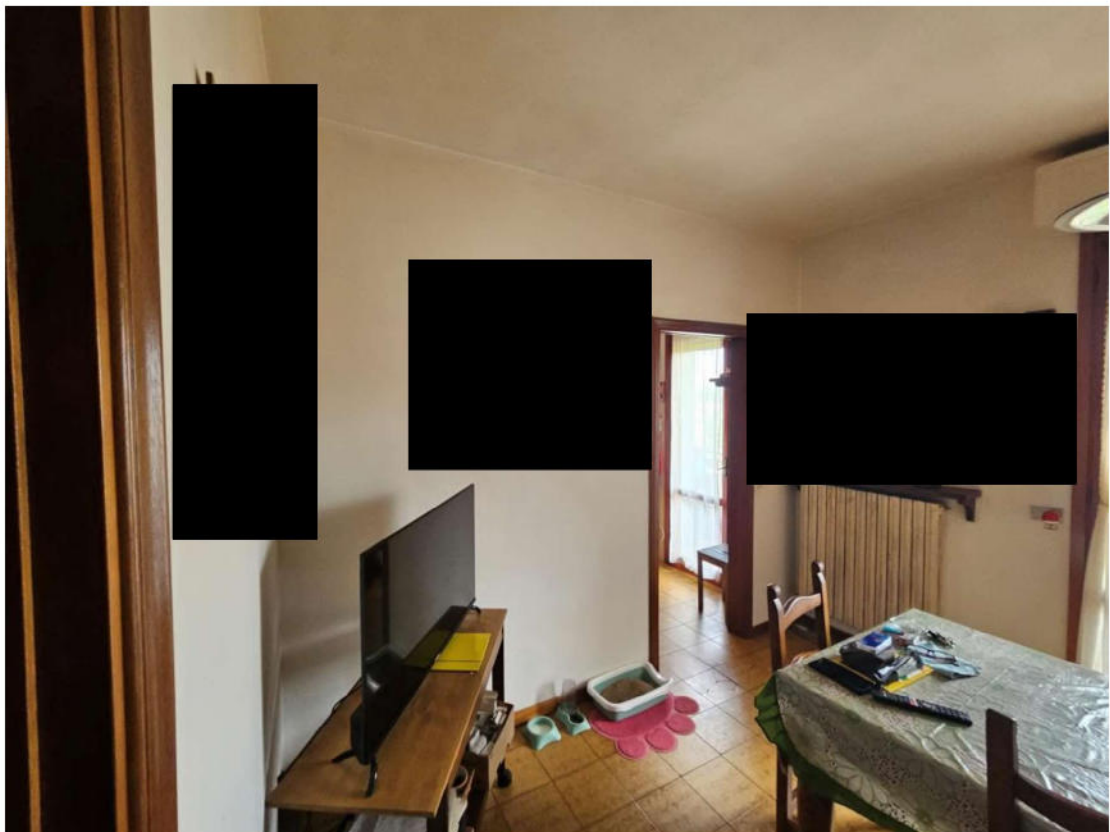
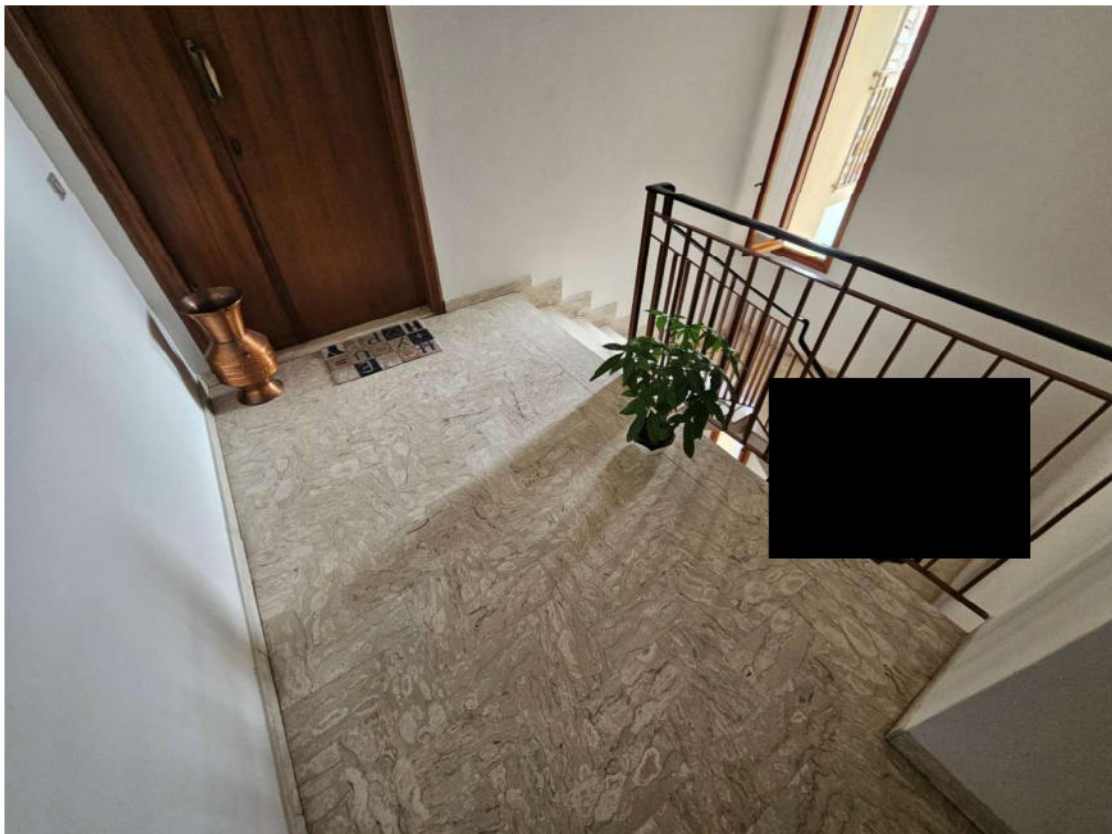




FOTO 26

FOTO 27



GARAGE Piazza Salvador Allende n. 3 PIANO TERRA
Rilievo metrico e Punti di vista fotografici

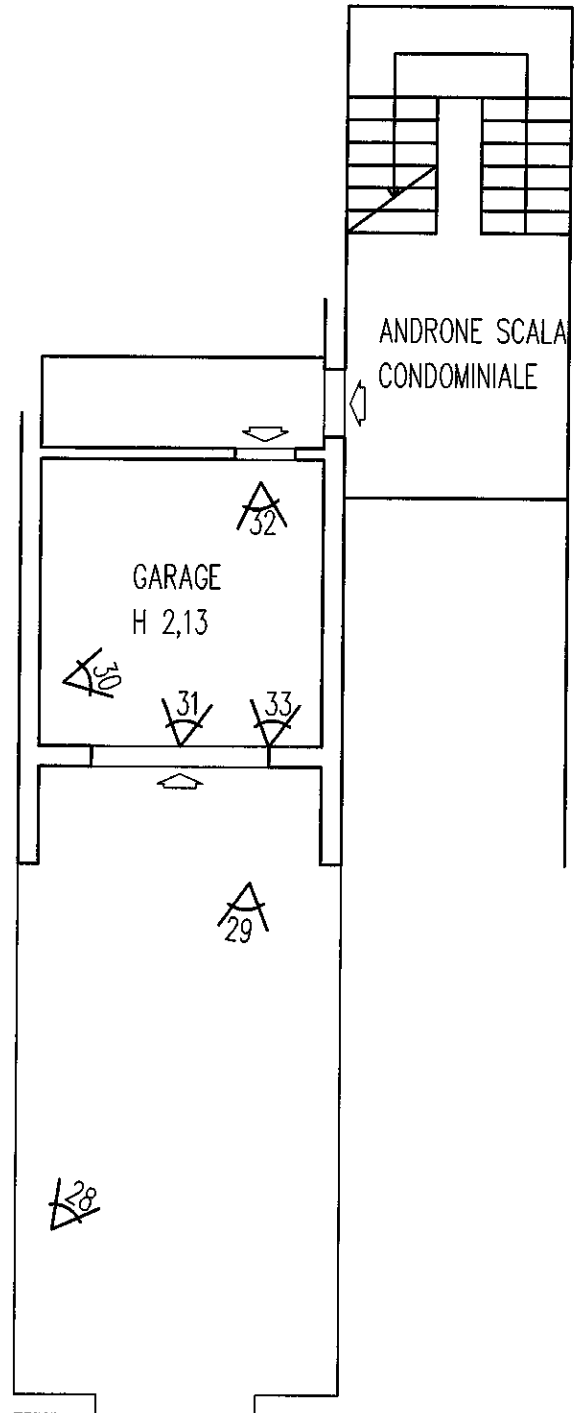
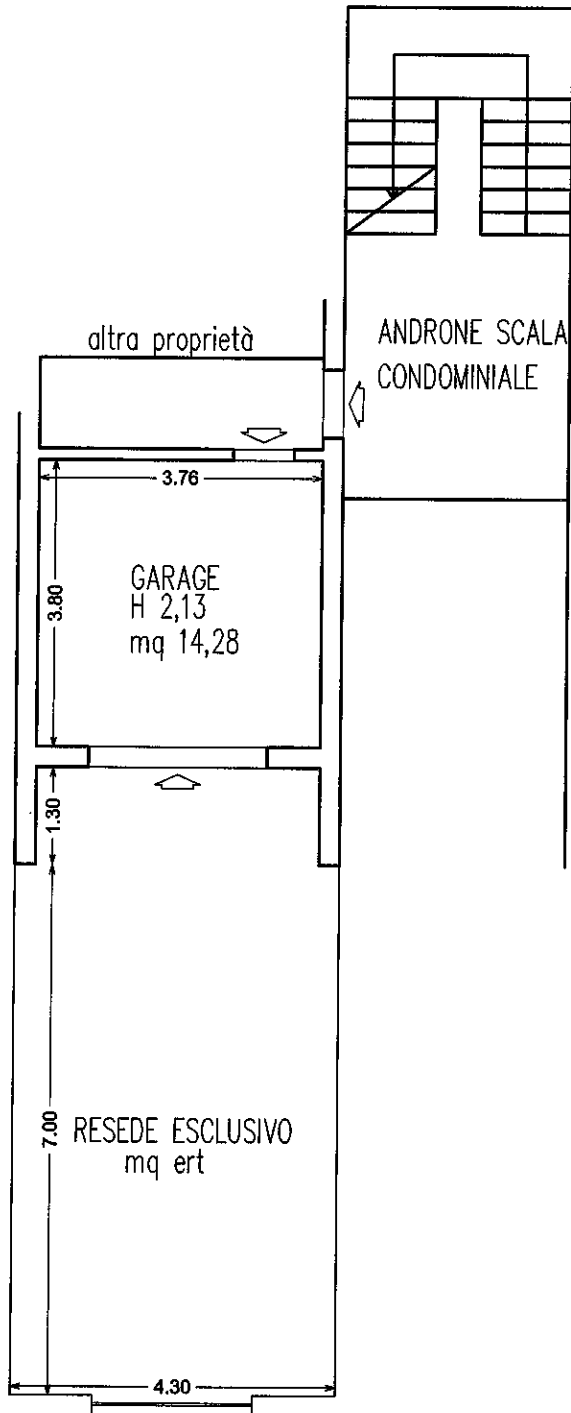


FOTO GARAGE PIAZZA SALVADOR ALLENDE N. 3



FOTO 28

FOTO 29





FOTO 30

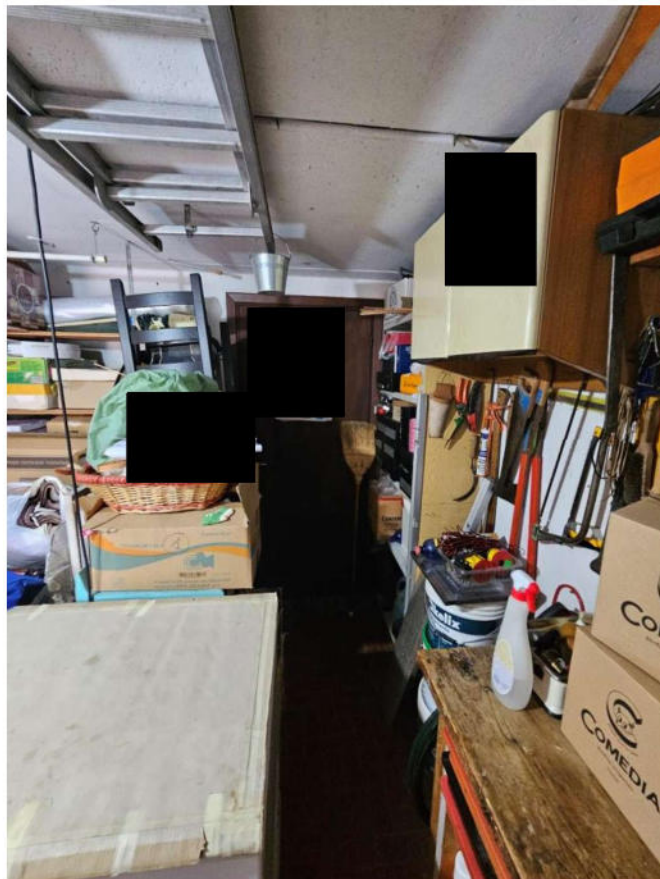
FOTO 31



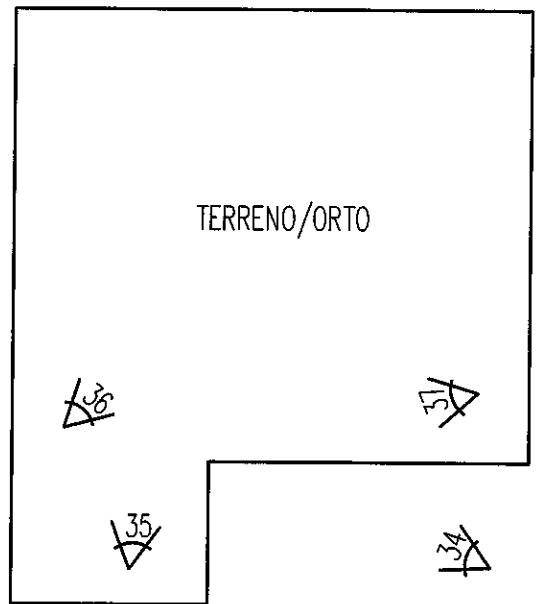


FOTO 32

FOTO 33



TERRENO-ORTO PROPRIETA' ESCLUSIVA RETROSTANTE IL FABBRICATO CONDOMINIALE
Rilievo metrico e Punti di vista fotografici



TERRENO/ORTO	46.40
--------------	-------

ORTO-GIARDINO PROPRIETA' ESCLUSIVA (RETROSTANTE IL FABBRICATO)



FOTO 34

FOTO 35

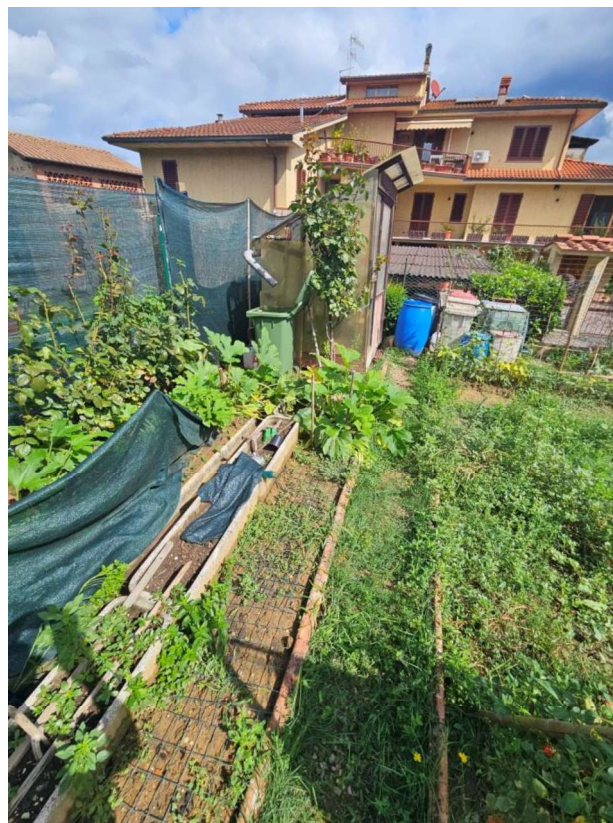




FOTO 36

FOTO 37

