

## Geom. Borella Fabrizio

PLANIMETRIA VIA PEZZONASCA - MOCONESI

N.C.E.U.

Foglio 15

Part. 312

Sub. 10

Via Montello, 34 e 36 r. - 16137 Genova

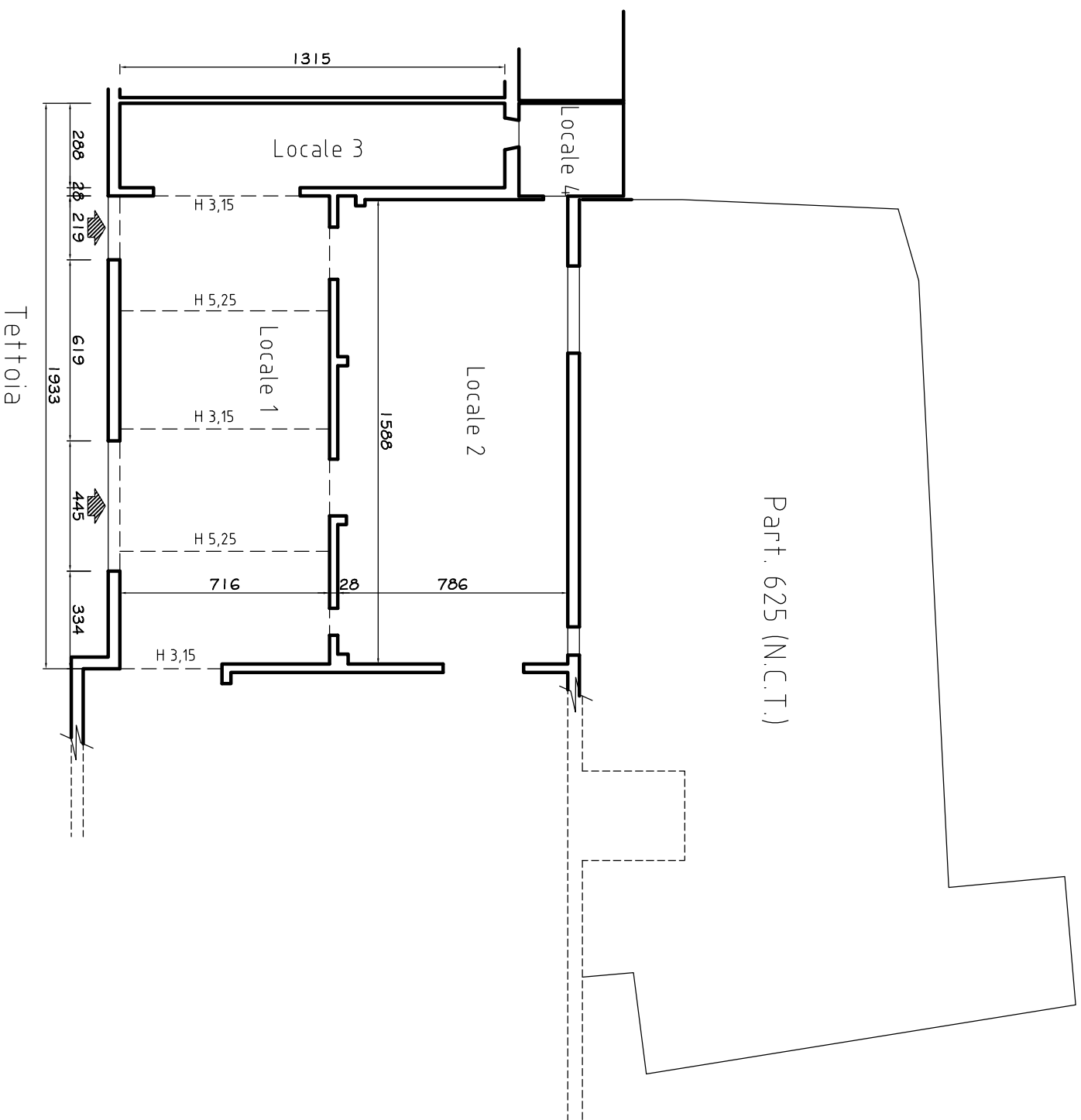
Tel.: 010/8376803

Fax.: 010/8376803

C.F.: BRLFRZ69S23D969Z

P.I.: 03597910102

e-mail : [info@studiotecnico borella.com](mailto:info@studiotecnico borella.com)



### Sup. Nette

Locale 1 = 115,00 mq.

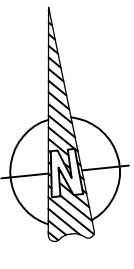
Locale 2 = 124,50 mq.

Locale 3 = 38,00 mq.

Locale 4 = 11,30 mq.

Totale Sup. Nette = 288,80 mq.

Sup. Lorda = 318,00 mq.



Scala 1:200