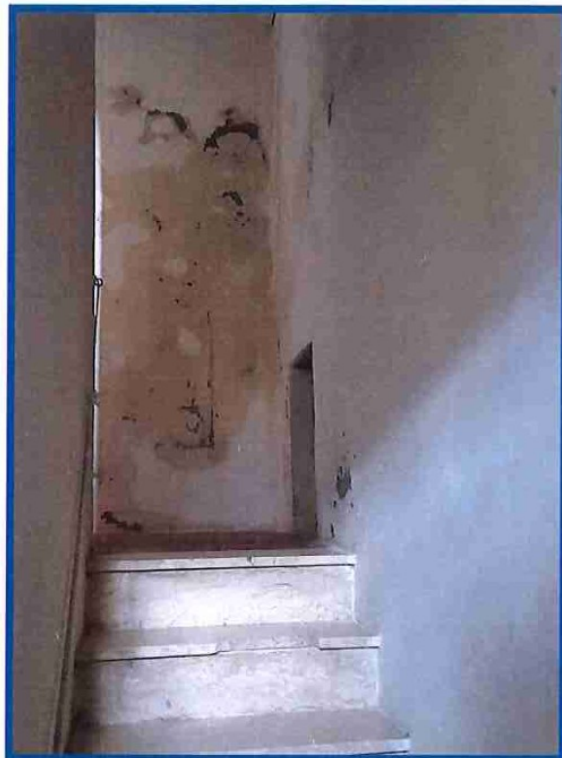


**DOCUMENTAZIONE FOTOGRAFICA  
TRIBUNALE DI FIRENZE**

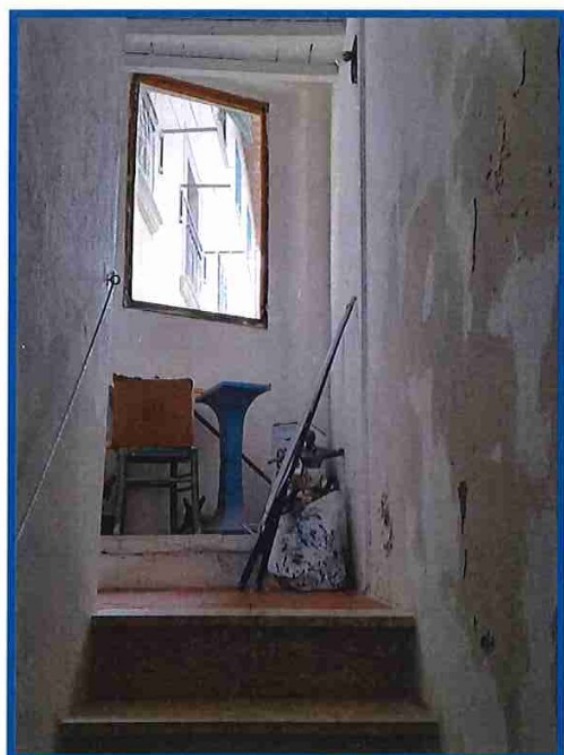
**ESECUZIONE IMMOBILIARE  
R.G. n. 516/2019**



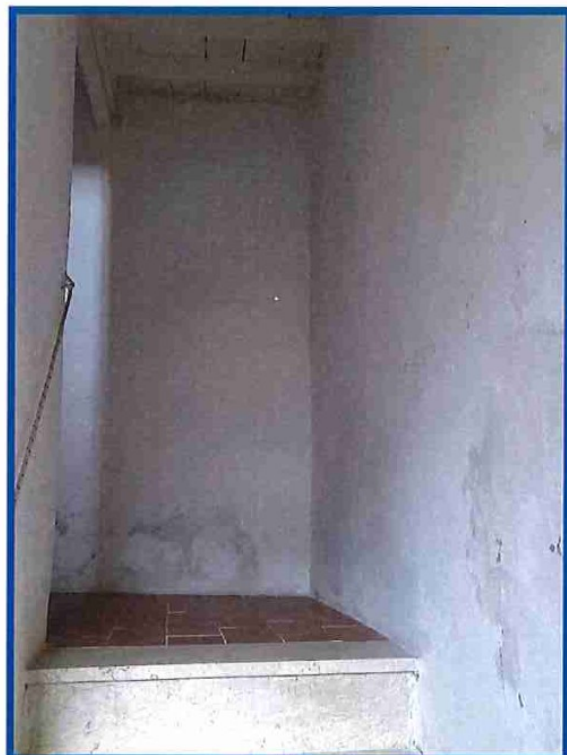
**1-vista frontale**



**2-pianerottolo 1**



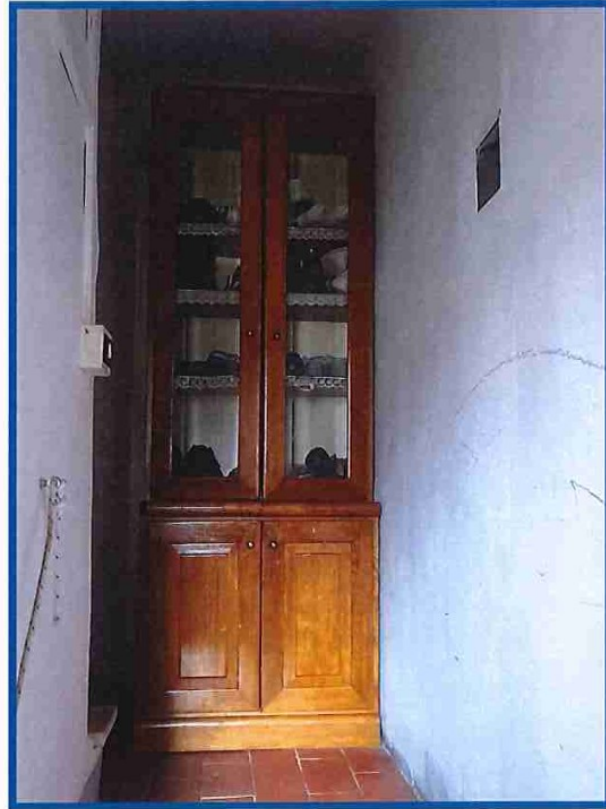
**3-pianerottolo 2**



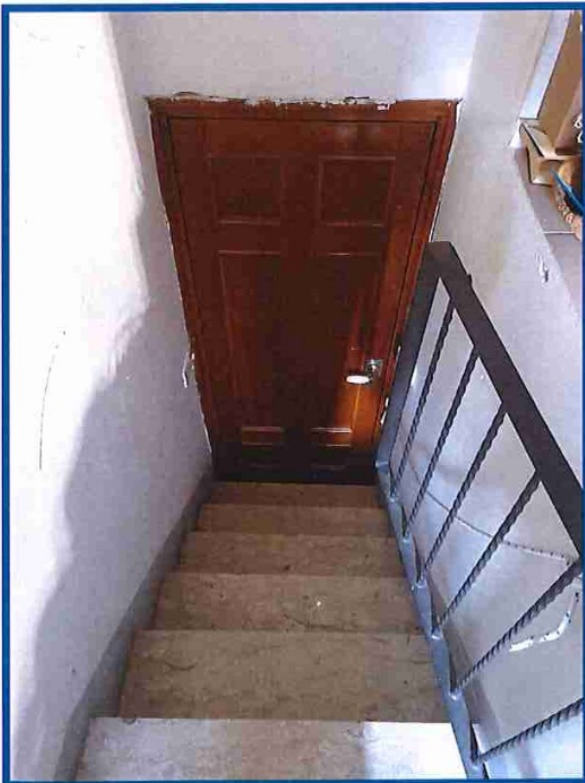
**4-pianerottolo 3**



5-pianerottolo 4



6-pianerottolo 5



7-scala interna



8-cucina-pranzo



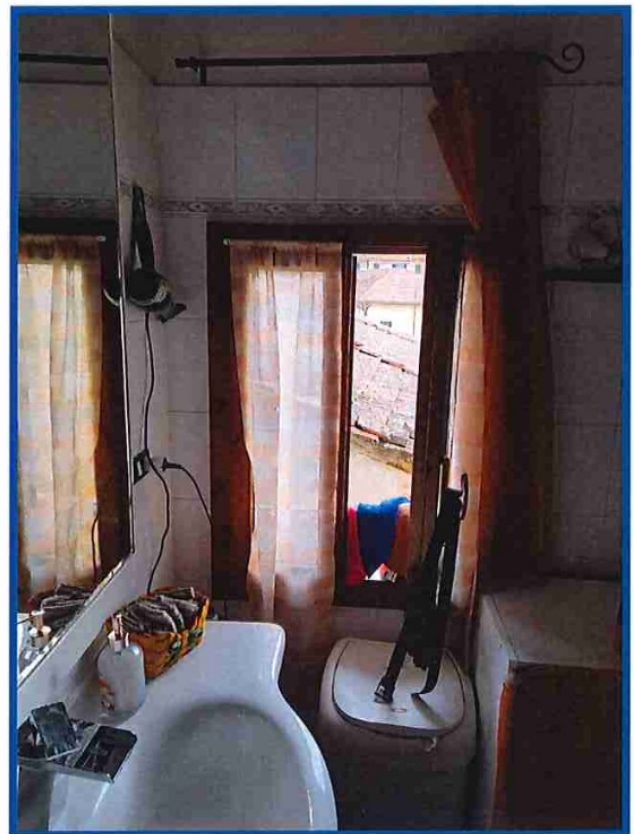
9-soggiorno



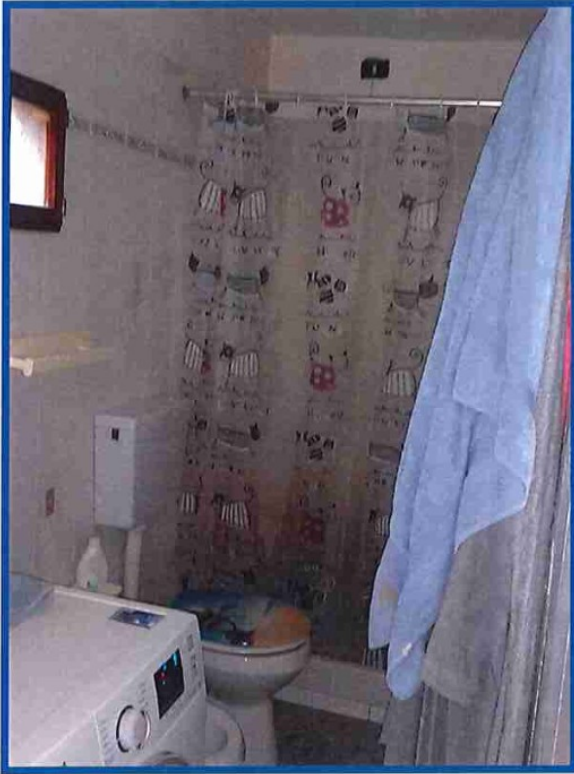
10-camera 1



11-camera 2



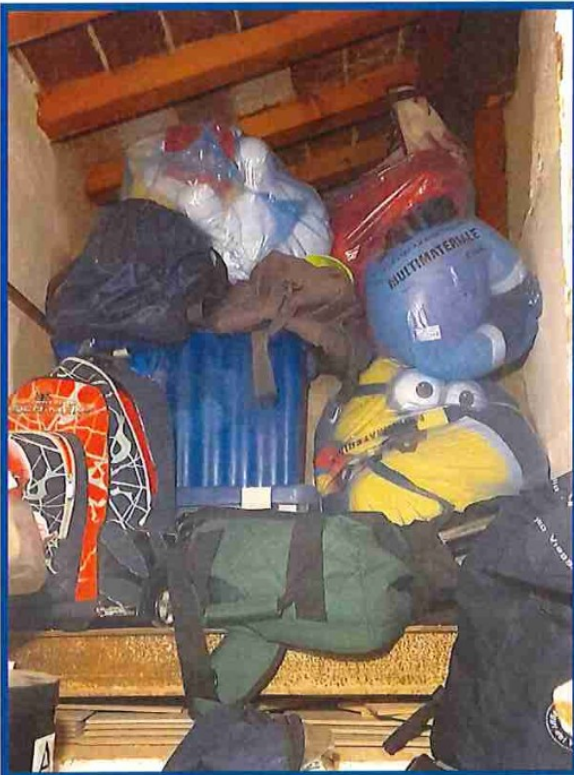
12-bagno vista 1



13-bagno vista 2



14-ripostiglio sopra-scala 1



15-ripostiglio sopra-scala 2