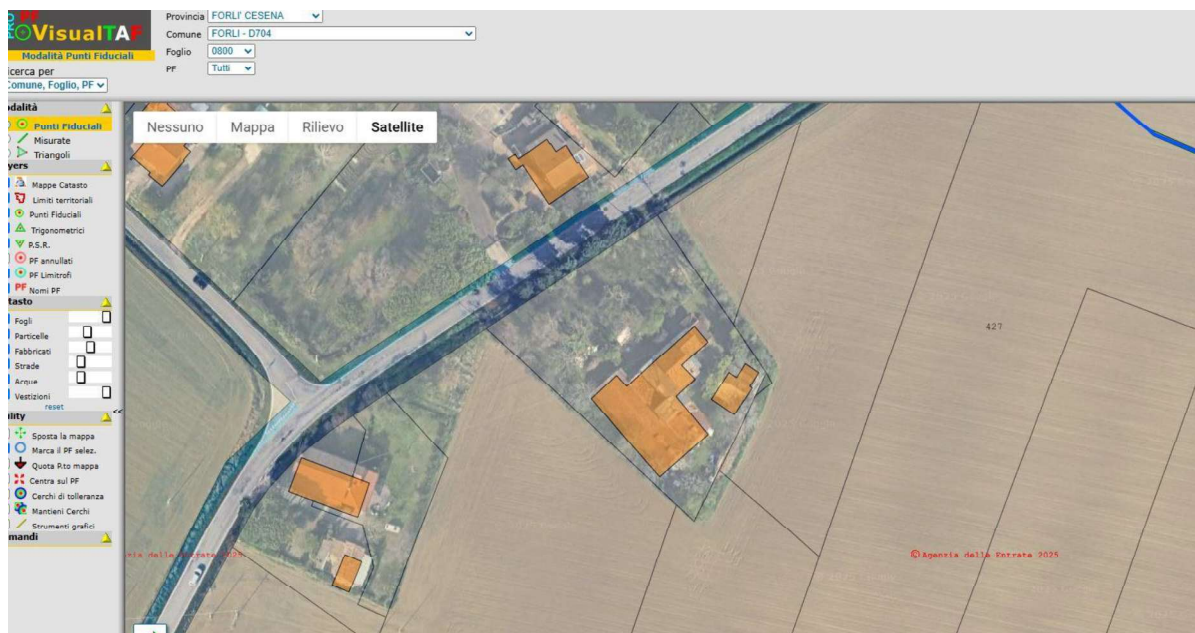
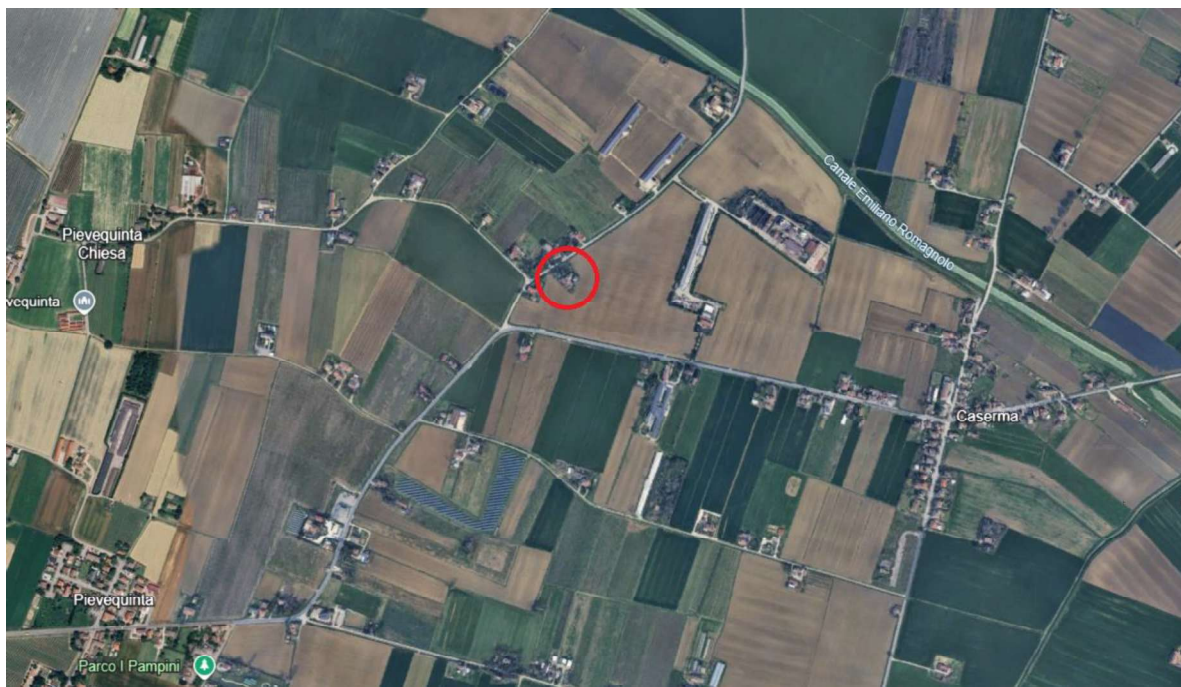


DOCUMENTAZIONE FOTOGRAFICA

LOTTO UNICO



Abitazione (Sub. 7)

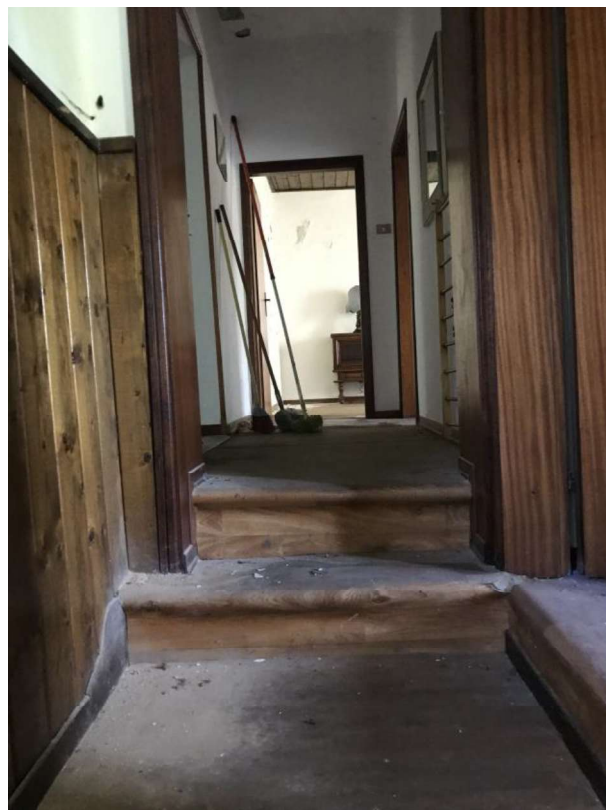
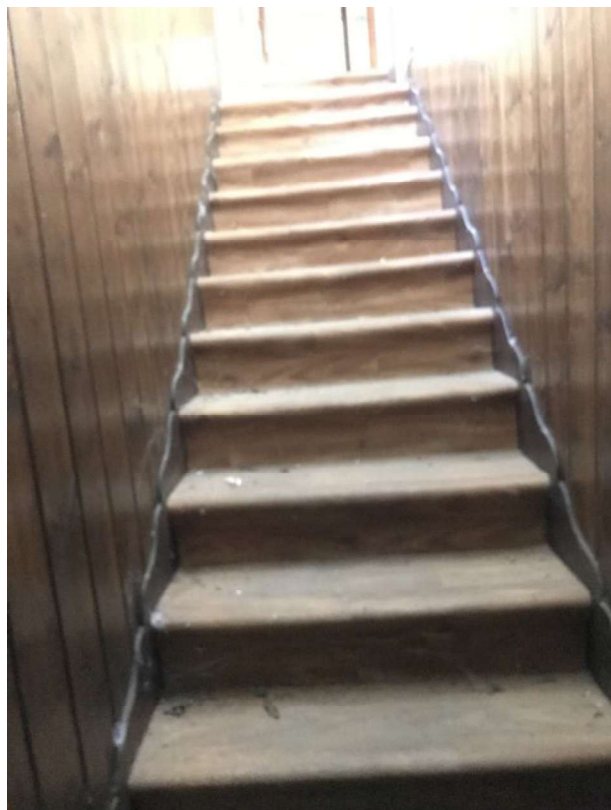
(Fabbricato abitativo esternamente)



(Fabbricato abitativo internamente Piano Terra)

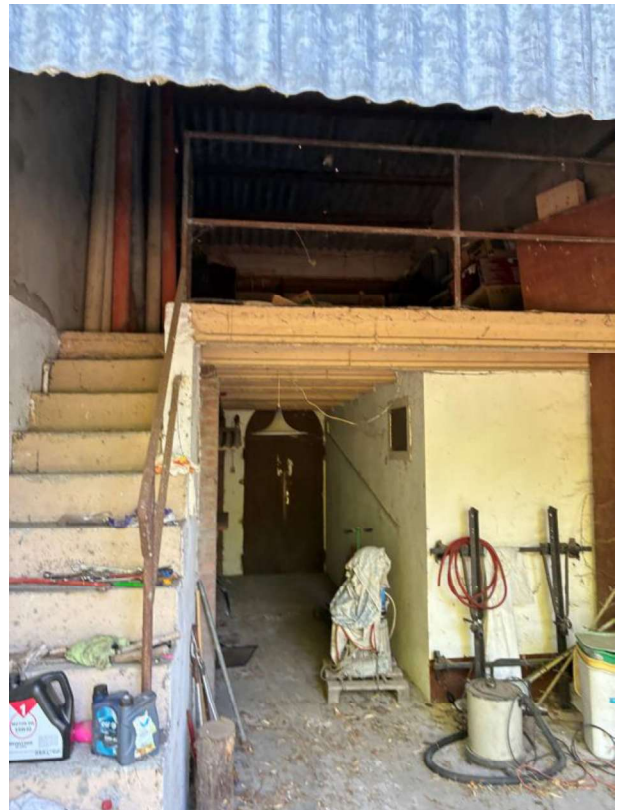
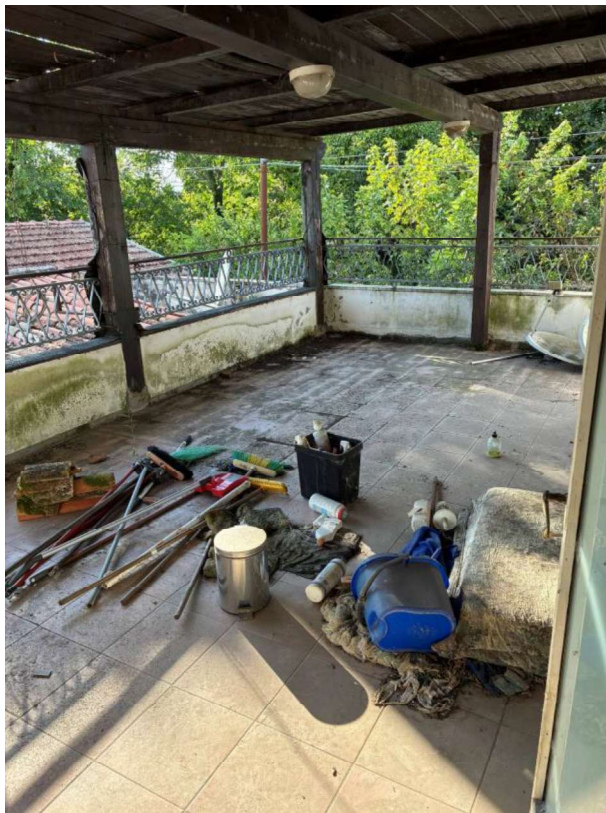


(Fabbricato abitativo internamente Piano Primo)





(Terrazzo -Portico con soppalco)



Cantina/ripostigli (Sub. 8)



Magazzino- depositi (Sub. 9)



1



Autorimessa (Sub. 10)

