

COMUNE
DI
LECCE

COMMISSIONE EDILIZIA COMUNALE
Tornata del 8.6.76
PARERE FAVOREVOLE
IL PRESIDENTE

ORIGINALI

PROGETTO DI VARIANTE

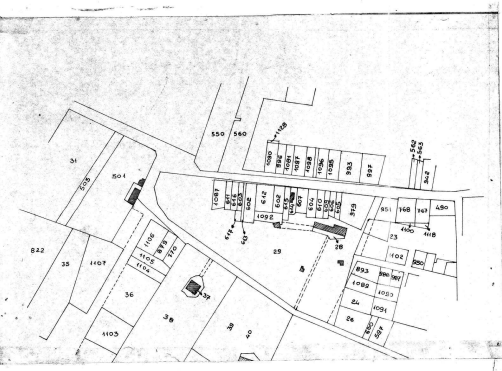


DI UN COMPLESSO EDILIZIO DA ERIGERSI IN VIA VANINI ANG.

VIA DELLE ANIME - Lottizzazione SAVOIA -

COMMITTENTE: Soc. Immob. MERIM ANIERIA - BARI

PROGETTISTA: ing. GIORGIO BOCCA albo n. 335



PLANIMETRIA 1:2000

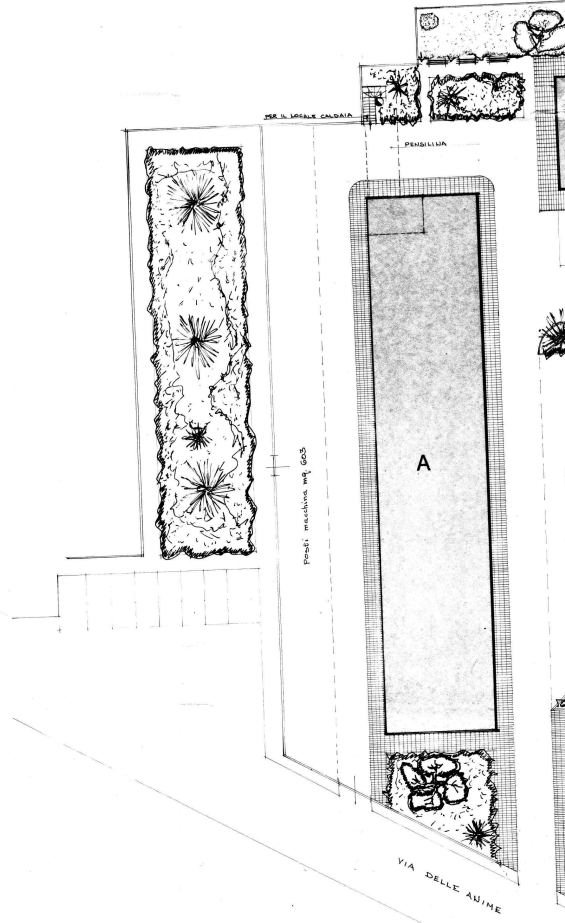
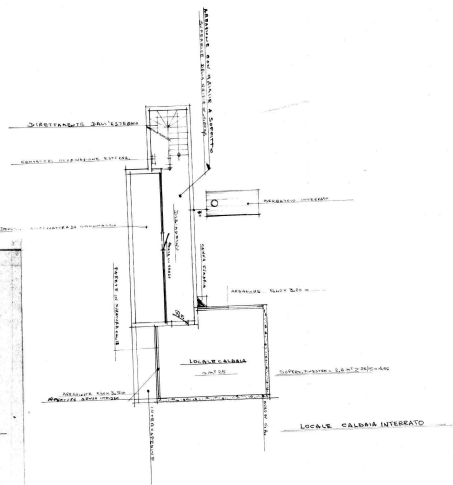
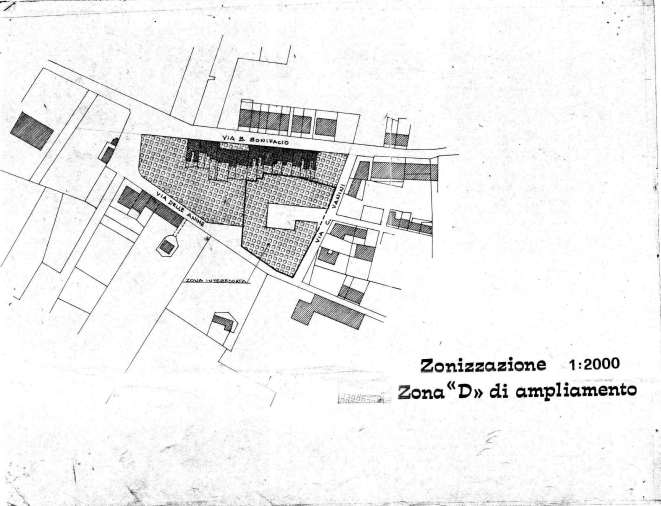


TABELLA DATI TECNICI	AREA TOTALE	AREA COPERTA	SUPERFICIE	ALTEZZA	VOLUME
SUPERFICIE TOT.	28.284	84	2.80	2,80	804
" "	22.170	84	1.862	2,15	4.065
SUPERFICIE PAVIMENTI	2,04	84	301	0,60	184
VOLUME TOTALE					4.874
SUPERFICIE DEL LOTTO			1,00		4,154
VOLUME EDIFICIO					2,860
INDICE EDIFICIO					2,500

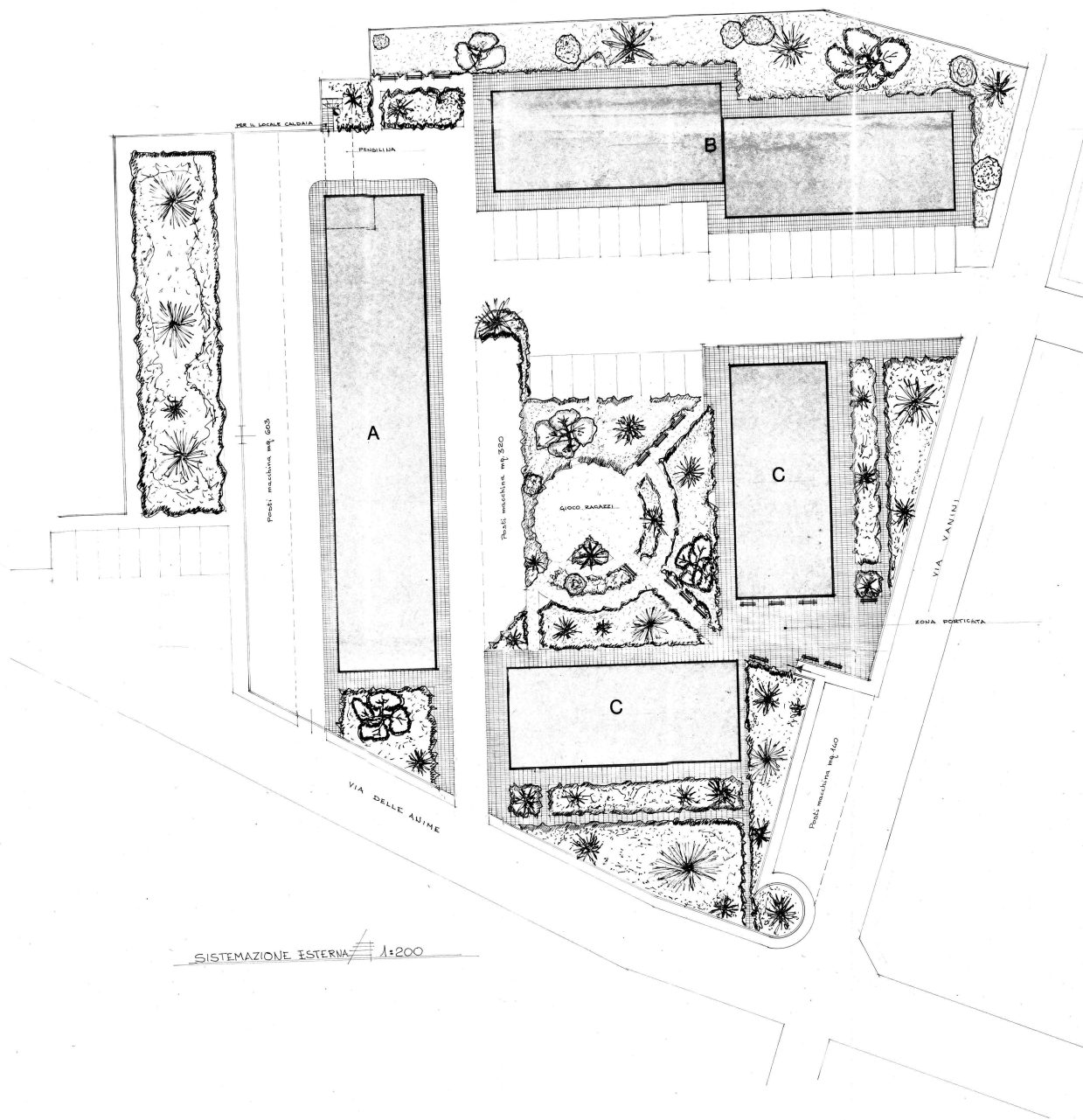


Zonizzazione 1:2000
Zona "D" di ampliamento

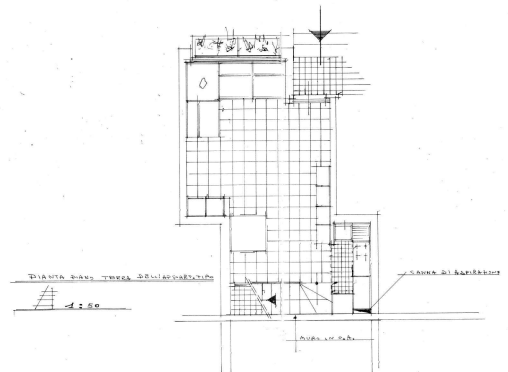
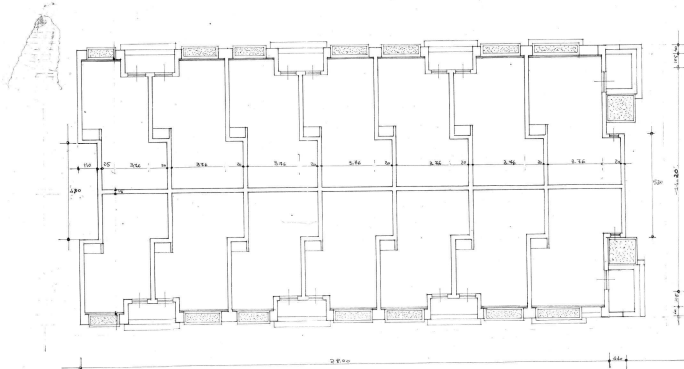
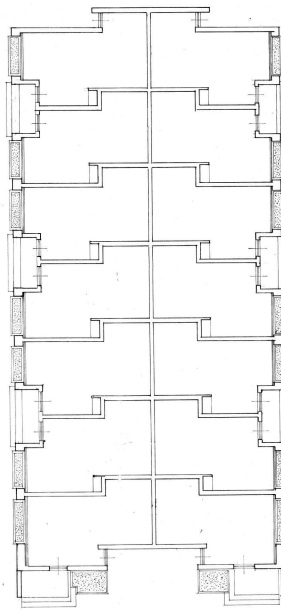
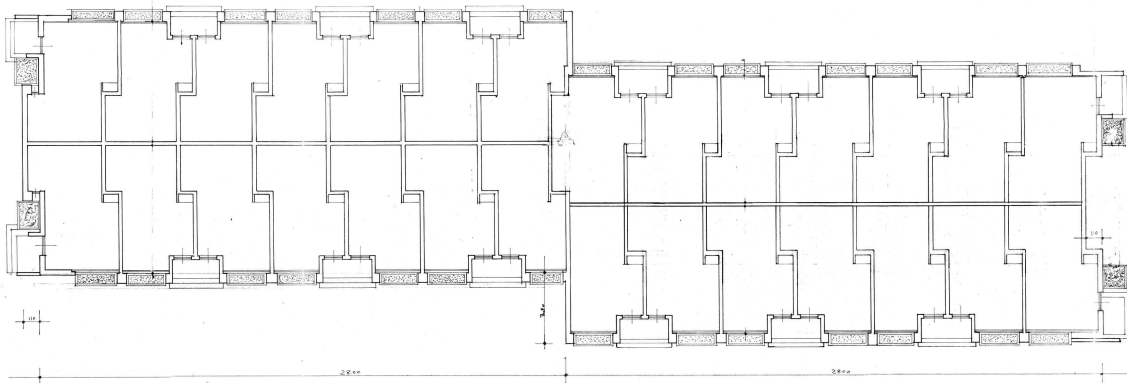
SISTEMAZIONE ESTERNA 1:200

100
68
165
51
246
34
840
900

ALCANTARA S.p.A. - VIA S. GIUSEPPE 144
 00187 ROMA - TEL. 06/47811111

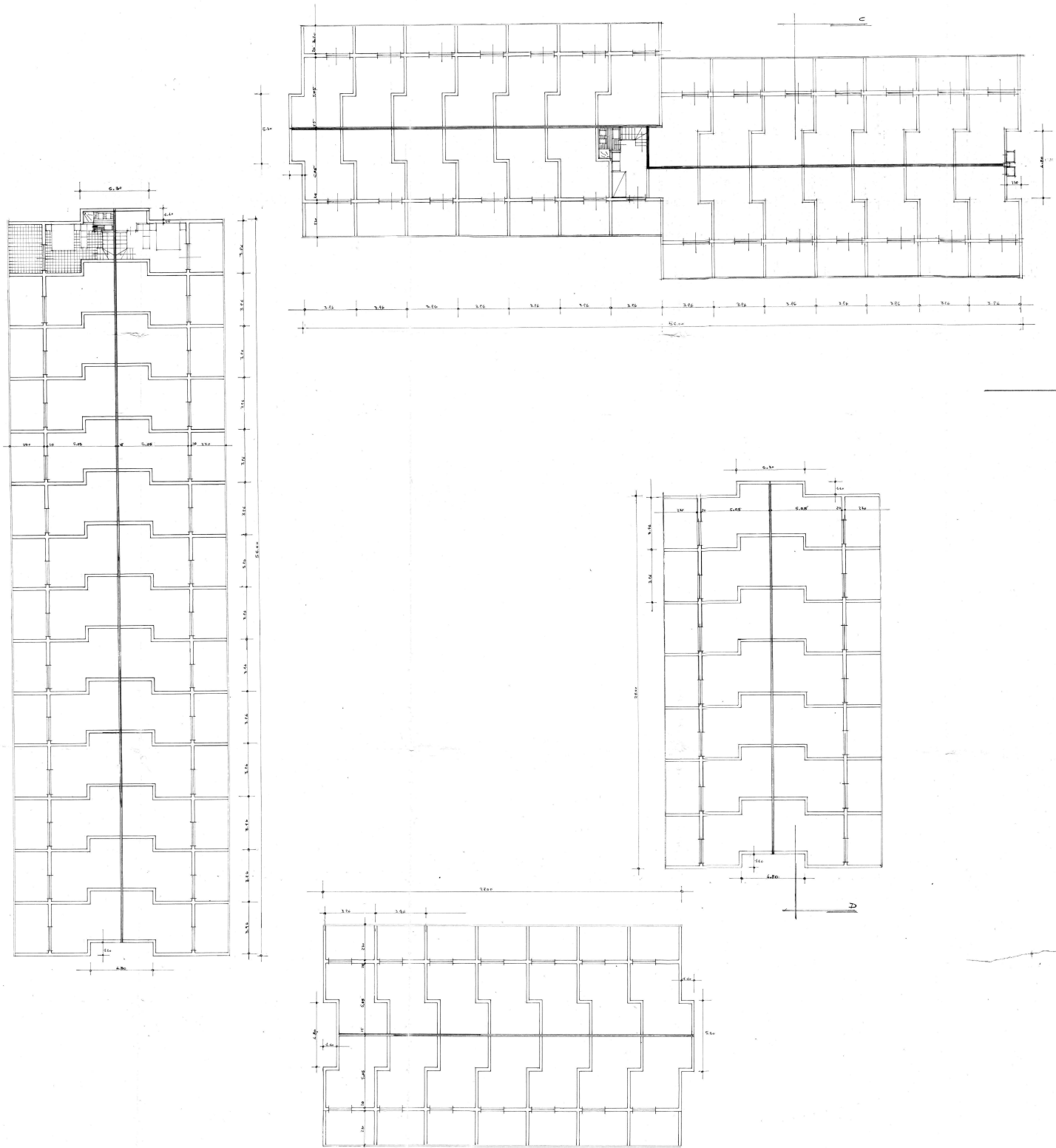


SISTEMAZIONE ESTERNA 1:200

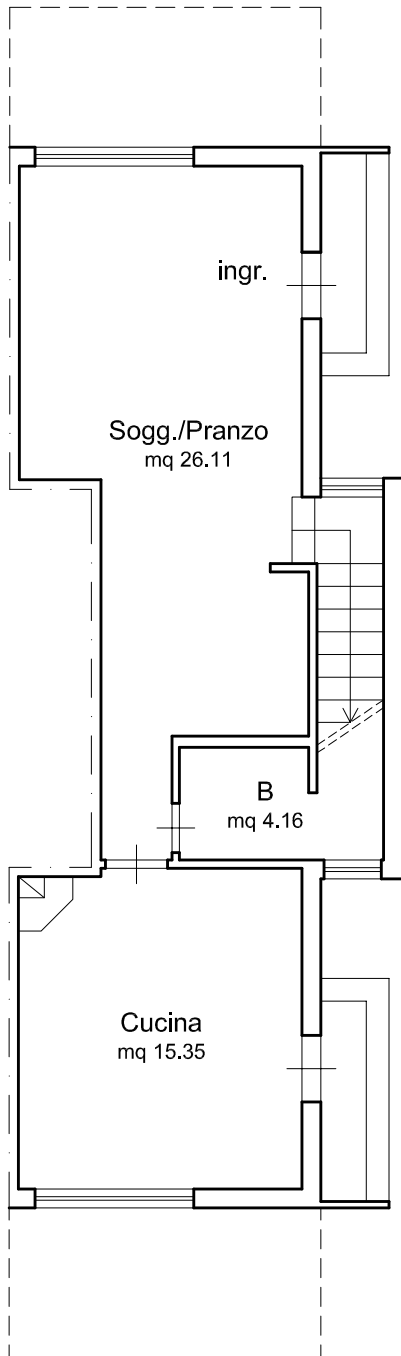


RRA napp. 1:100

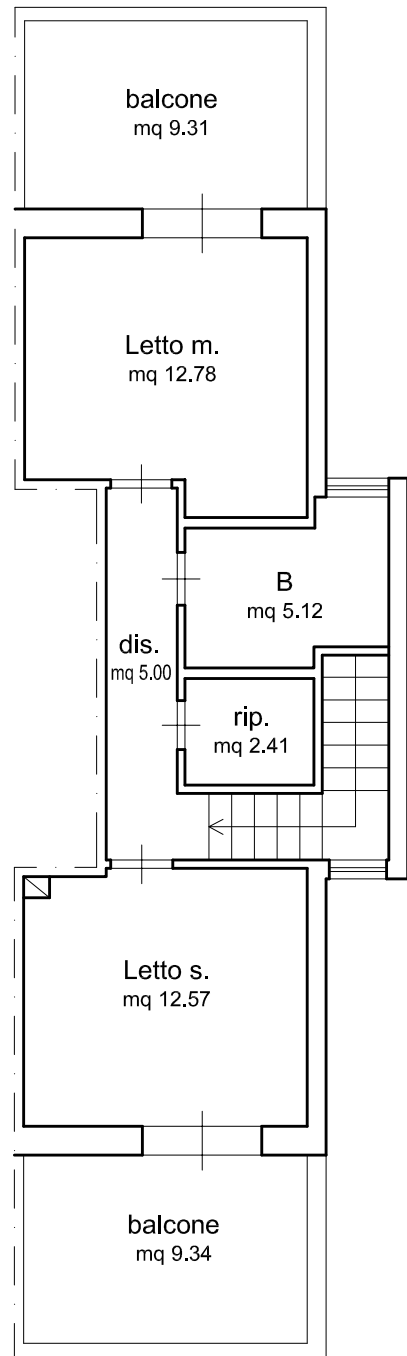
PIANTA PIANO TE



PIANTA PIANO 1^o rapp. 1:100



PIANTA PIANO TERRA Scala 1:100
(stato di fatto)



PIANTA PIANO PRIMO Scala 1:100
(stato di fatto)