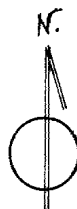
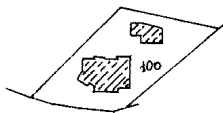


- COMUNE DI SABAUDIA -

F. 116

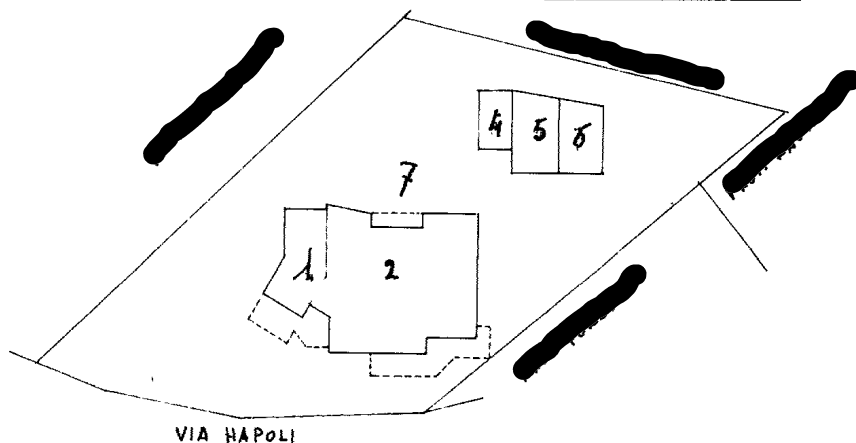
RIF. TIPO MAPPALE

H° DEL



RAPP. 1:500

P.TERRA CON CORTE

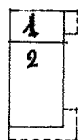
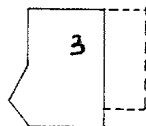
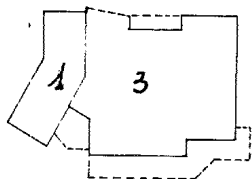


VIA NAPOLI

PIANO 1°

PIANO SECONDO

PIANO INTERRATO



- SUB 1: BENE COMUNE NON CENSIBILE (ATRIO E SCALE) AI SUB 2 e 3
- " 2: ABITAZIONE AL P.T. E CANTINA AL P. SCANTINATO IN PARTITA
- * 3: ABITAZIONE AL P.1° e P.2°

4= MAGAZZINO AL P.T.

5= GARAGE AL P.T.

6= GARAGE AL P.T.

7= Bene comune non censibile -CORTE- di sub 2-3-5-6-7

Prot. 17315/85

25 SET. 1985

IL TECNICO
Mario Pini