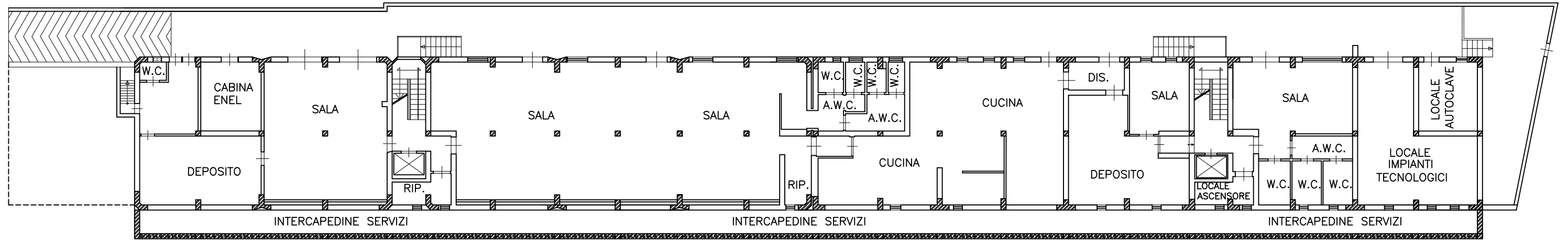
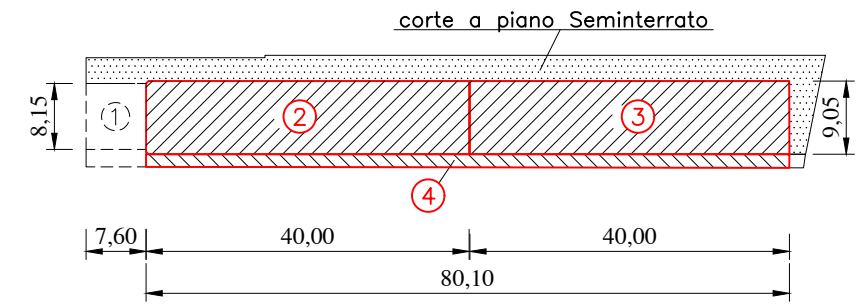


PIANO SEMINTERRATO

Superficie Piano Seminterrato = mq. (724,90+136,00) = mq. 860,90

Superficie Corte esterna mq. 310,00

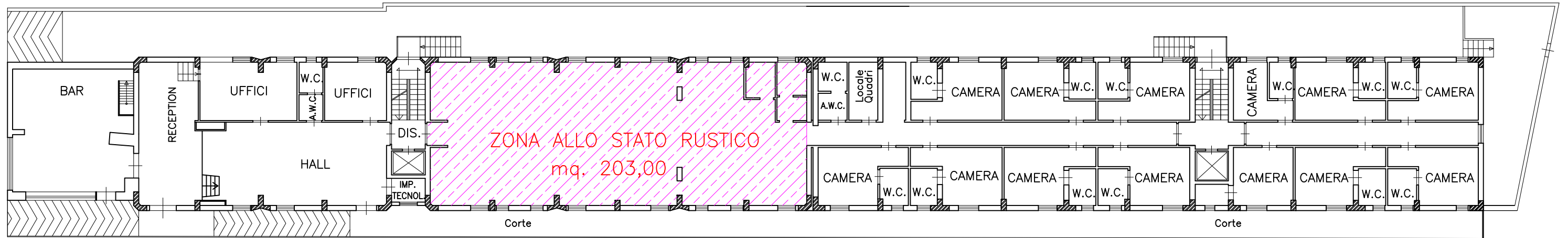
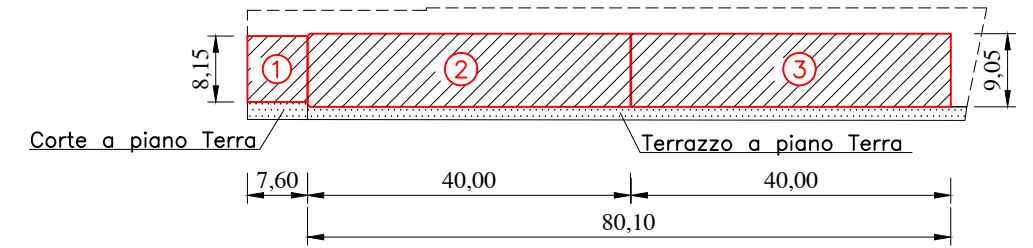


Il Tecnico
Ing. Pietro Mandanici



PIANO TERRA

Superficie Piano Terra = mq. (724,90 + 61,94) = 786,84
Superficie Corte esterna mq. 145,00



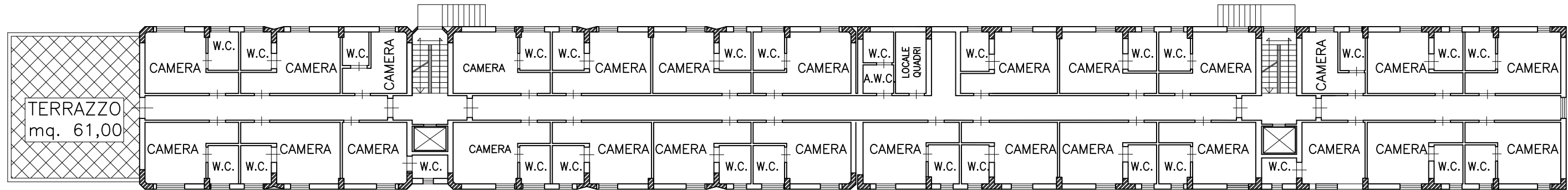
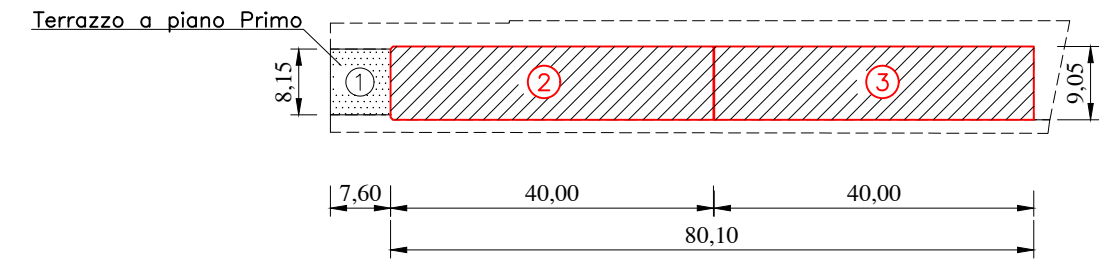
Il Tecnico
Ing. Pietro Mandanici



PIANO PRIMO

Superficie Piano Primo mq. 724,94

Superficie Terrazzo mq. 61,94

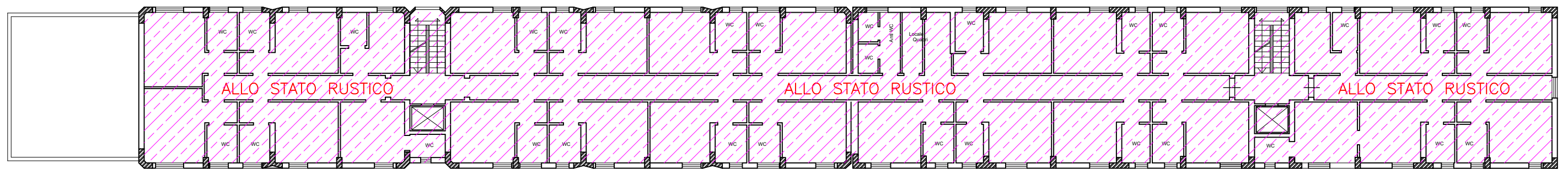
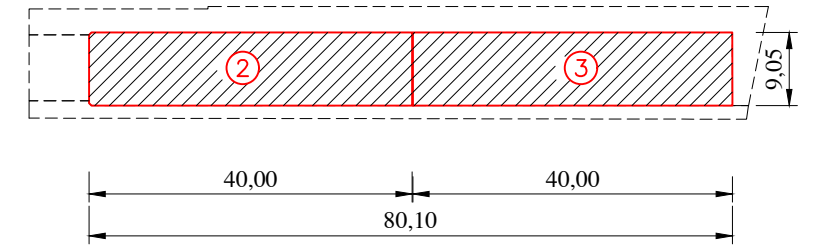


Il Tecnico
Ing. Pietro Mandanici



PIANO SECONDO

Superficie Piano Secondo mq. 724,94



Il Tecnico
Ing. Pietro Mandanici

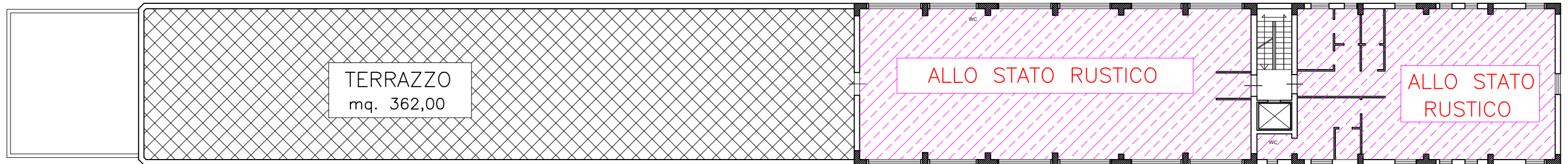
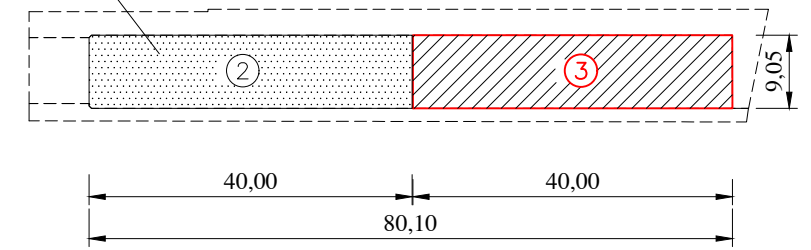


PIANO TERZO

Superficie Piano Terzo mq. 358,00

Superficie Terrazzo mq. 362,00

Terrazzo a piano Primo



Il Tecnico
Ing. Pietro Mandanici

