



FOTO 1 – Prospetto principale fabbricato in via E. Fermi, 14



FOTO 2 – Particolare prospetto principale: vista balconi appartamento ultimo piano



FOTO 3 – Prospetto laterale



FOTO 4 – Prospetto retro



FOTO 5 - ingresso e corridoio

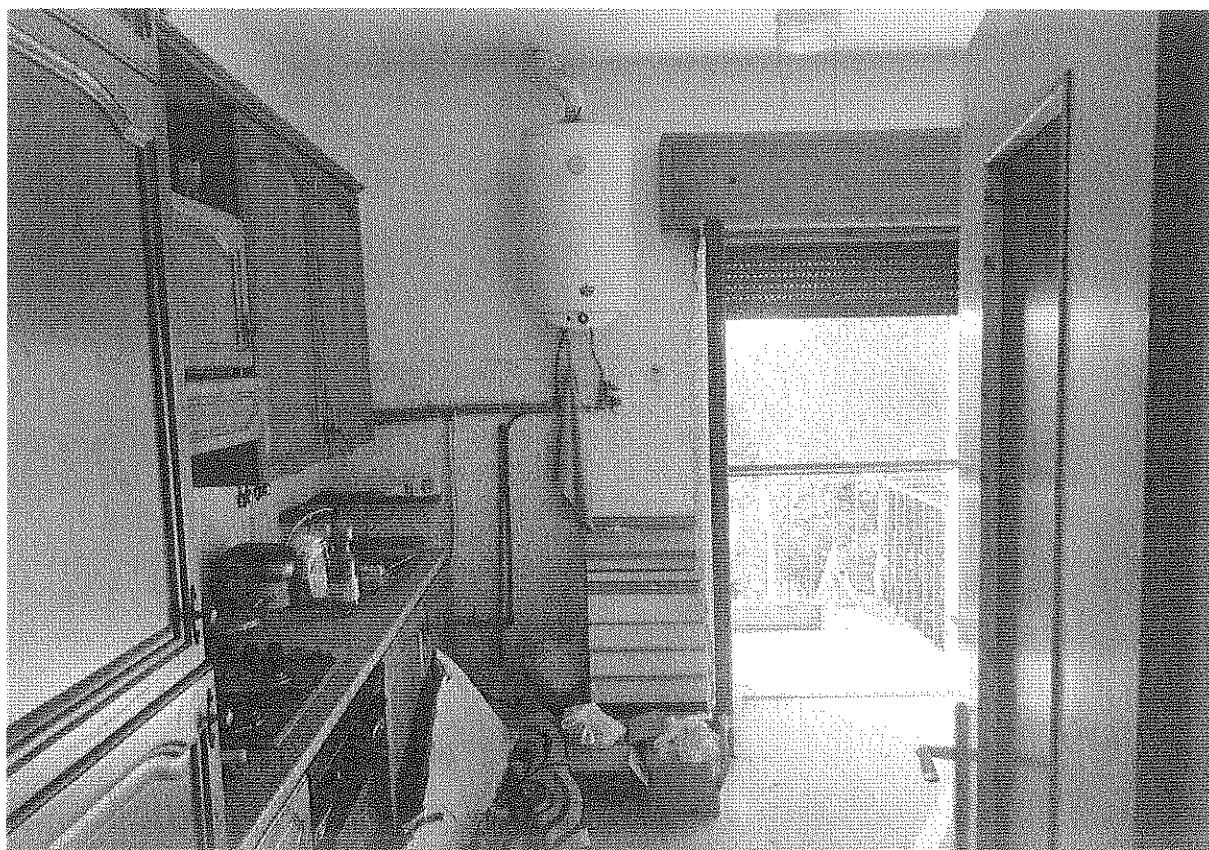


FOTO 6 - cucina



FOTO 7 – Locale soggiorno

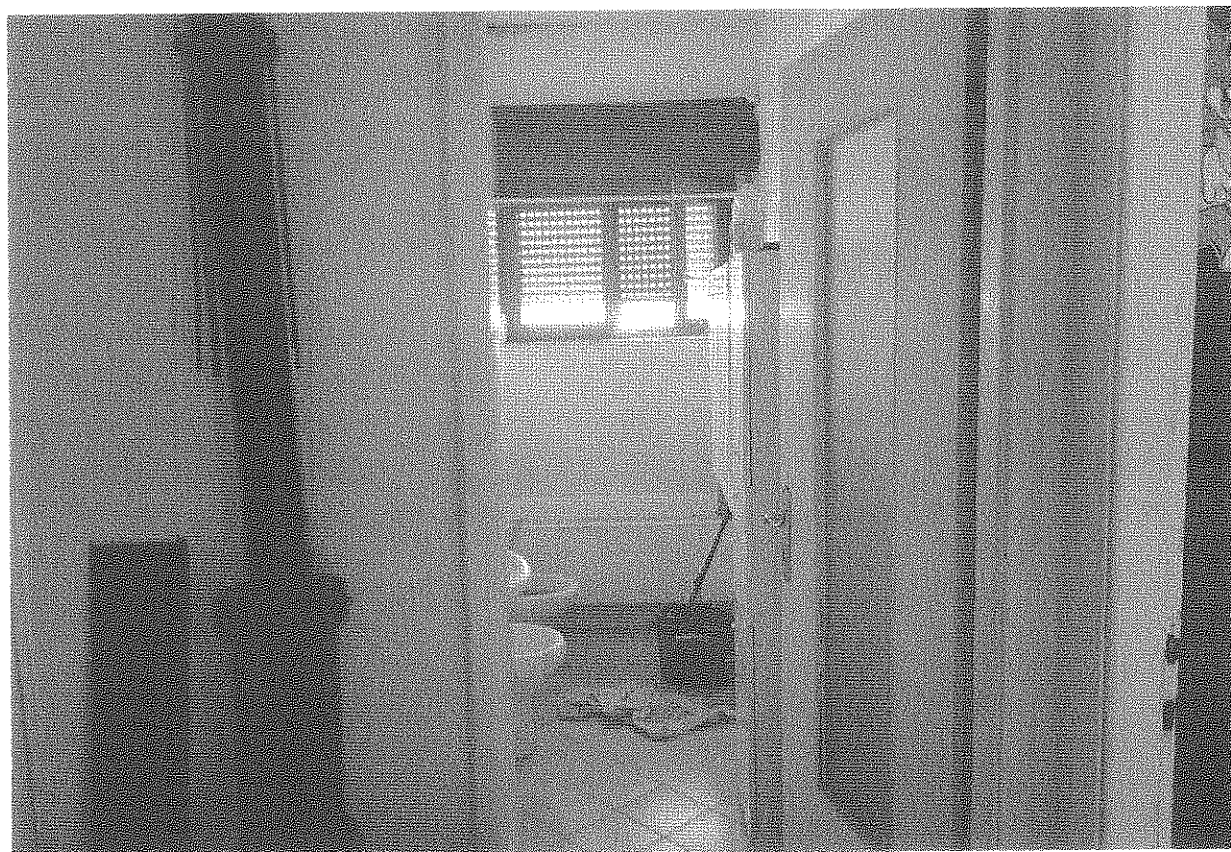


FOTO 8 – bagno



FOTO 9 – Camera 1

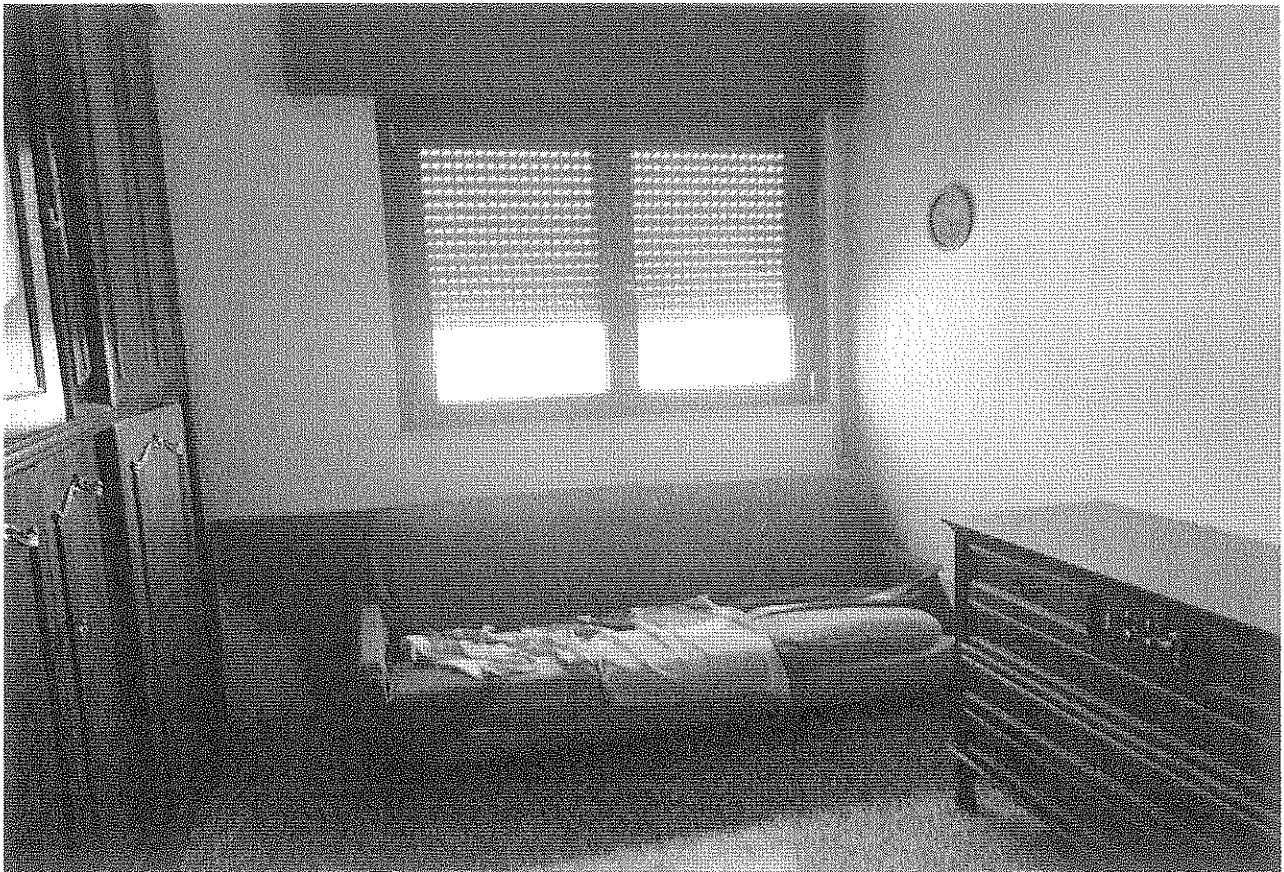


FOTO 9 – Camera 2



FOTO 10-11-12-13 – Particolari impianti e serramenti



FOTO 14 – Vista corridoio cantine



FOTO 15 – Locale cantina

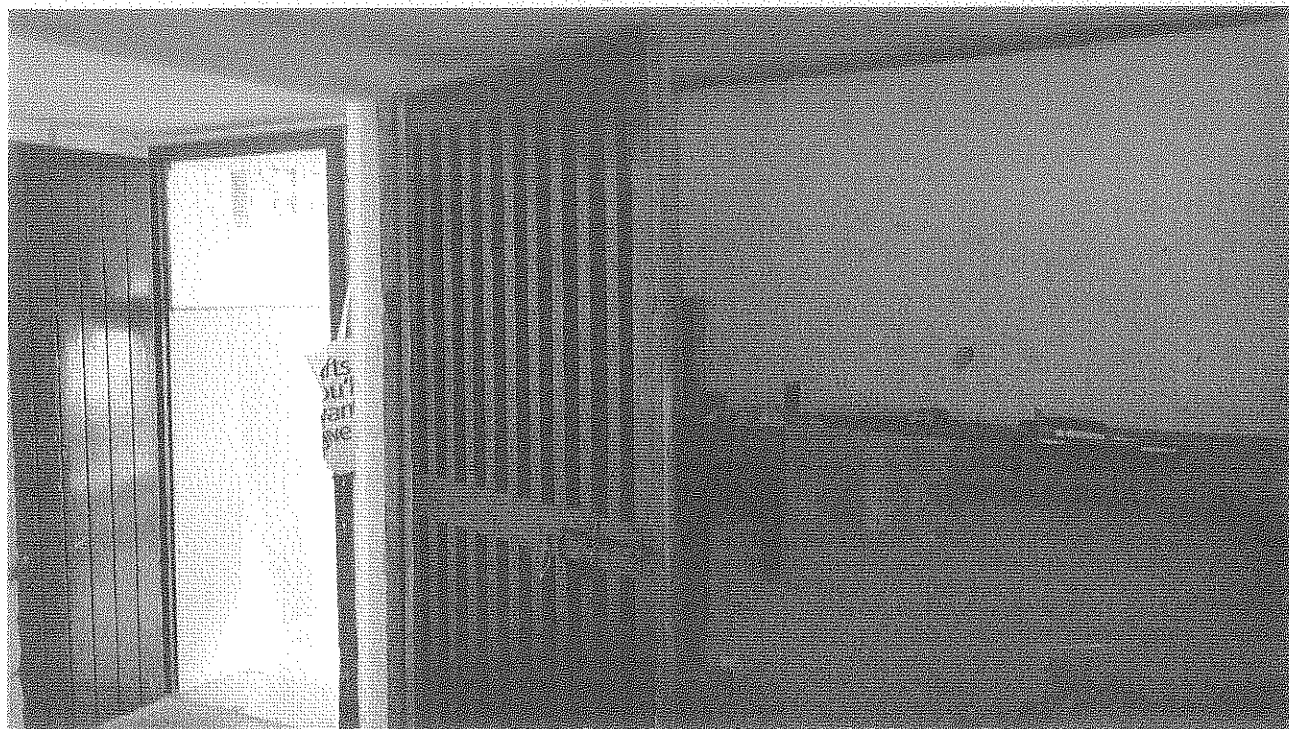


FOTO 16 - Locale cantina