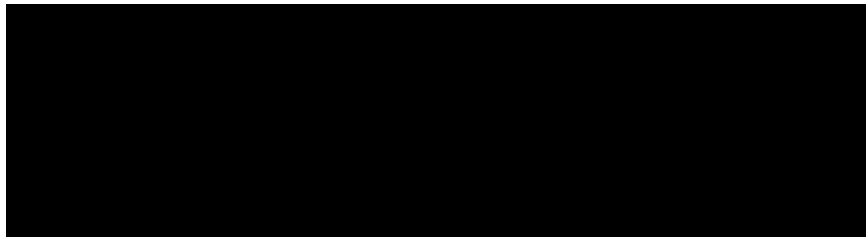


## TRIBUNALE DI PAVIA

SEZIONE CIVILE – UFFICIO ESECUZIONI IMMOBILIARI

**R.G.E. 411/2021 e 236/2024 riunite**



Giudice:

*Dott. Francesco Rocca*

**COMPARTO D e COMPARTO E  
LOTTO UNICO**

**ALLEGATO 3b**

Documentazione Fotografica

C.T.U.:

*Ing. Marco Cattaneo*



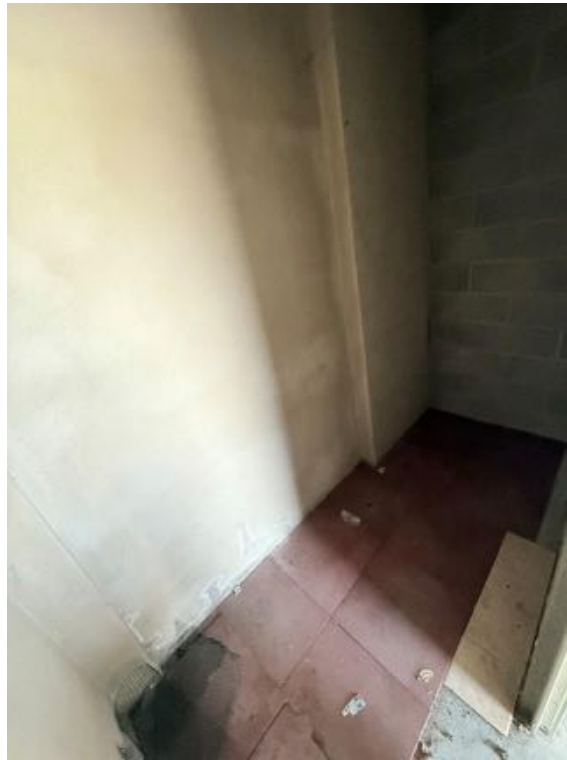


Piano Terra - Cantina (Sub. 4) - (foto 1)

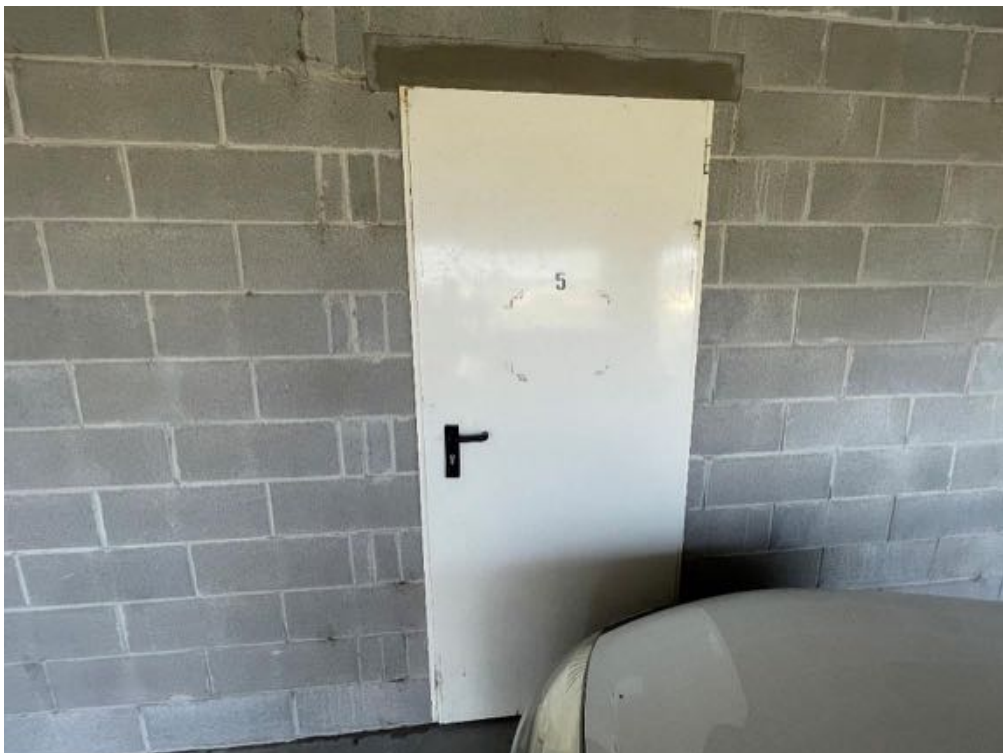


Piano Terra - Cantina (Sub. 4) - (foto 2)





Piano Terra - Cantina (Sub. 4) - (foto 3)



Piano Terra - Cantina (Sub. 5) - (foto 1)





Piano Terra - Cantina (Sub. 5) - (foto 2)



Piano Terra - Cantina (Sub. 6) - (foto 1)



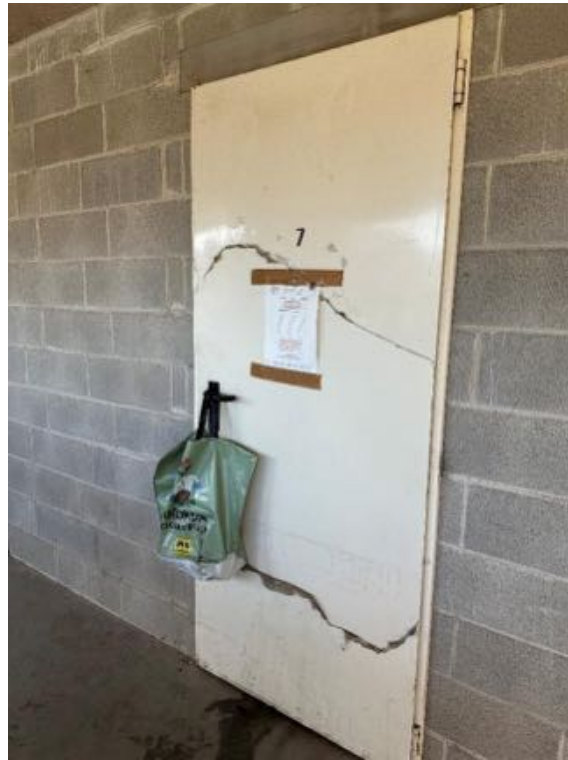


Piano Terra - Cantina (Sub. 6) - (foto 2)



Piano Terra - Cantina (Sub. 6) - (foto 3)



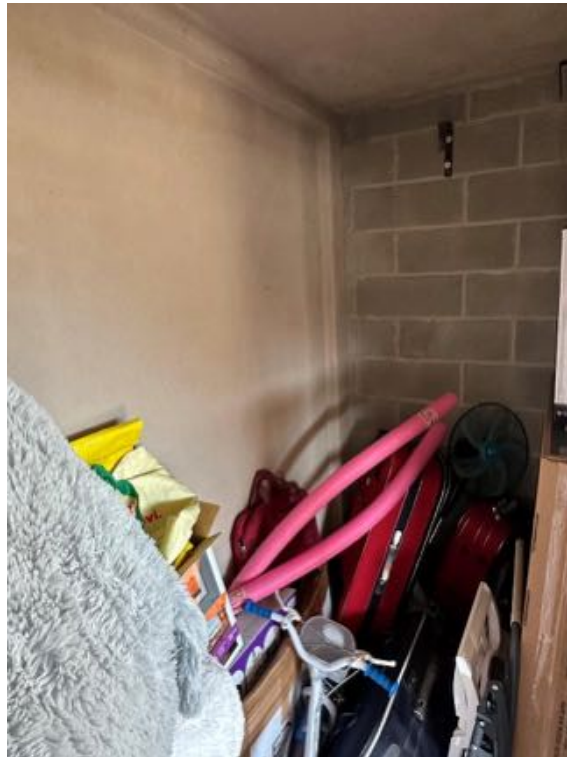


Piano Terra - Cantina (Sub. 7) - (foto 1)



Piano Terra - Cantina (Sub. 7) - (foto 2)





Piano Terra - Cantina (Sub. 7) - (foto 3)



Piano Terra - Cantina (Sub. 8) - (foto 1)





Piano Terra - Cantina (Sub. 8) - (foto 2)



Piano Terra - Cantina (Sub. 8) - (foto 3)





Piano Terra - Cantina (Sub. 9) - (foto 1)



Piano Terra - Cantina (Sub. 9) - (foto 2)





Piano Terra - Cantina (Sub. 10) - (foto 1)

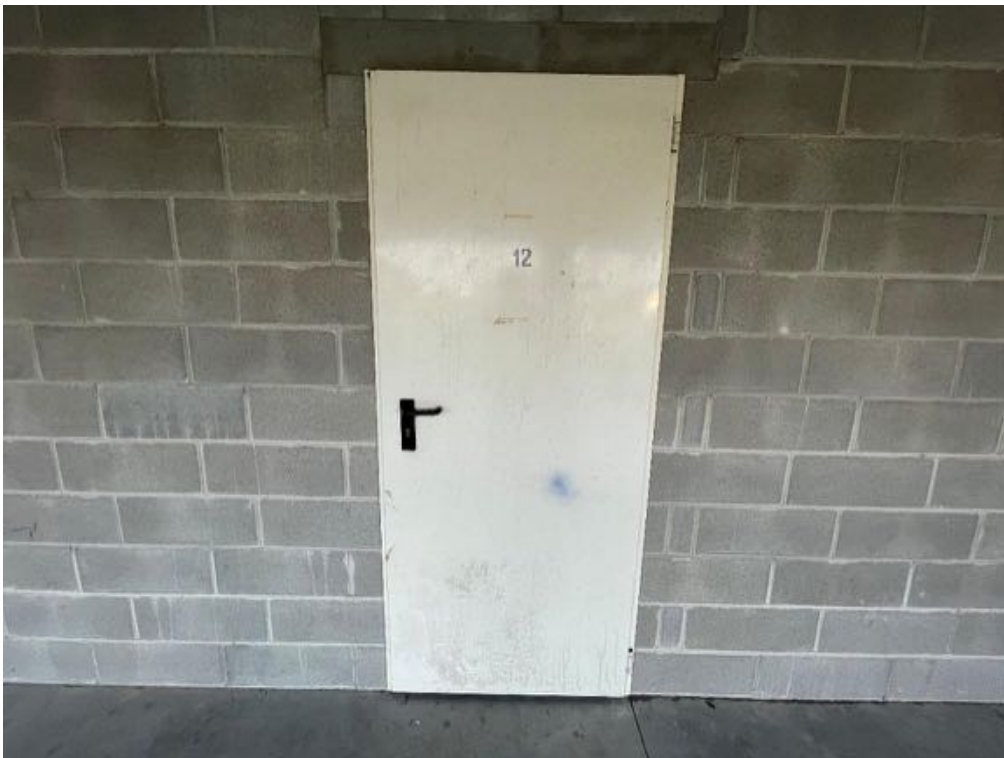


Piano Terra - Cantina (Sub. 11) - (foto 1)





Piano Terra - Cantina (Sub. 11) - (foto 2)

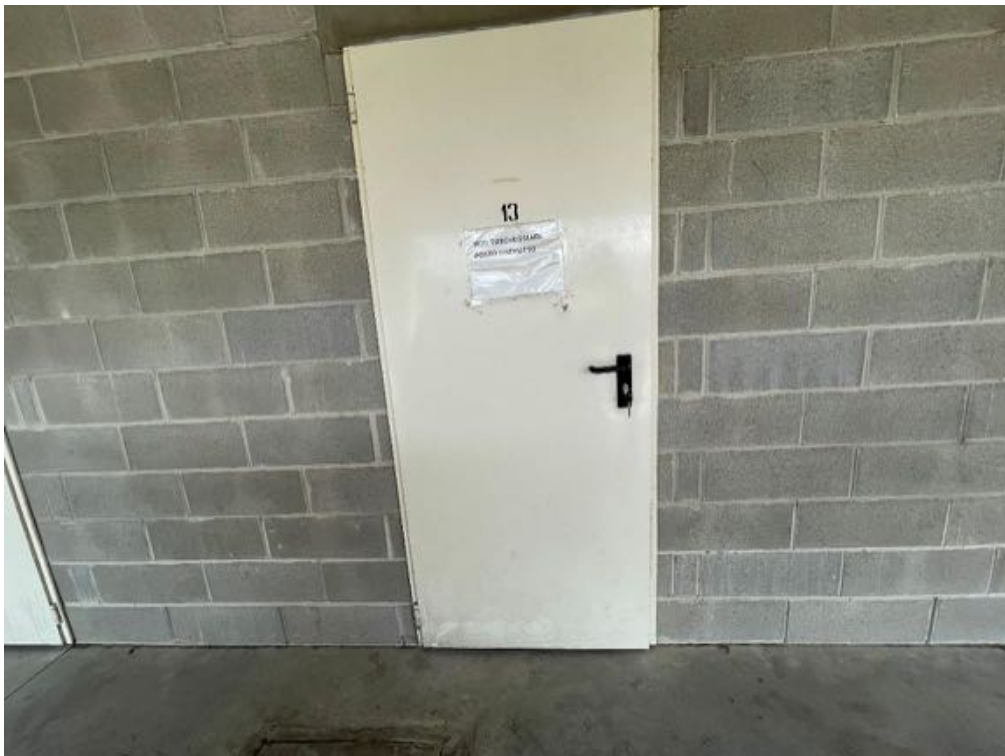


Piano Terra - Cantina (Sub. 12) - (foto 1)





Piano Terra - Cantina (Sub. 12) - (foto 2)

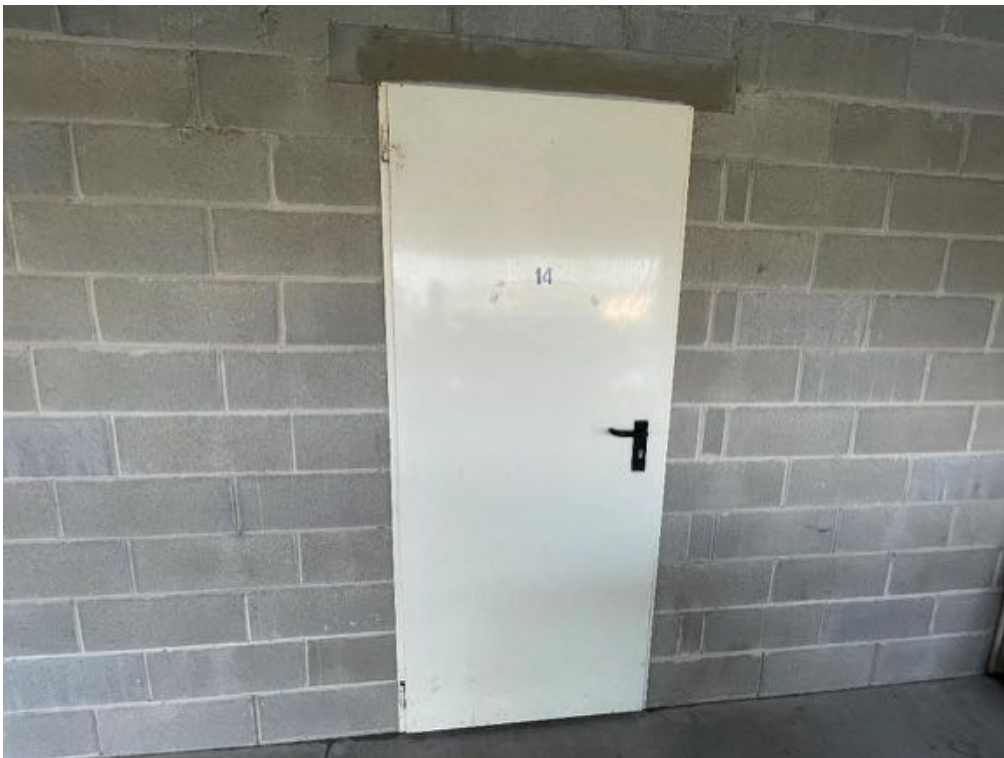


Piano Terra - Cantina (Sub. 13) - (foto 1)





Piano Terra - Cantina (Sub. 13) - (foto 2)



Piano Terra - Cantina (Sub. 14) - (foto 1)





Piano Terra - Cantina (Sub. 14) - (foto 2)

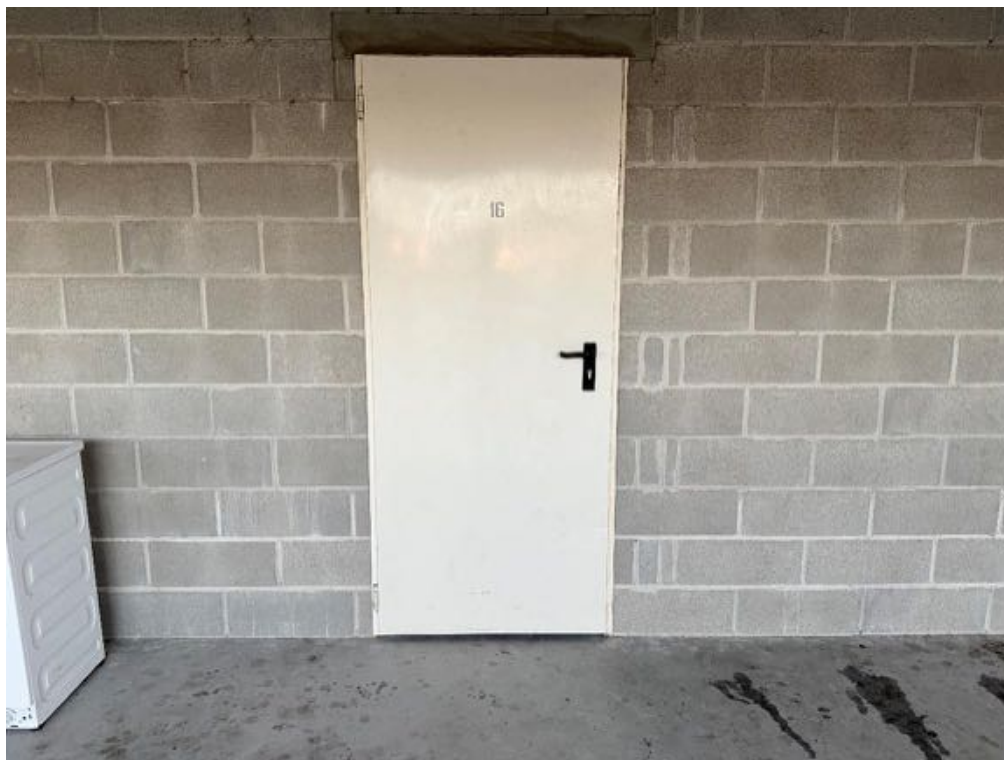


Piano Terra - Cantina (Sub. 15) - (foto 1)





Piano Terra - Cantina (Sub. 15) - (foto 2)



Piano Secondo - Cantina (Sub. 16) - (foto 1)





Piano Secondo - Cantina (Sub. 16) - (foto 2)



Piano Terra - Cantina (Sub. 17) - (foto 1)





Piano Terra - Cantina (Sub. 17) - (foto 2)

